

Lab 2

Reflection

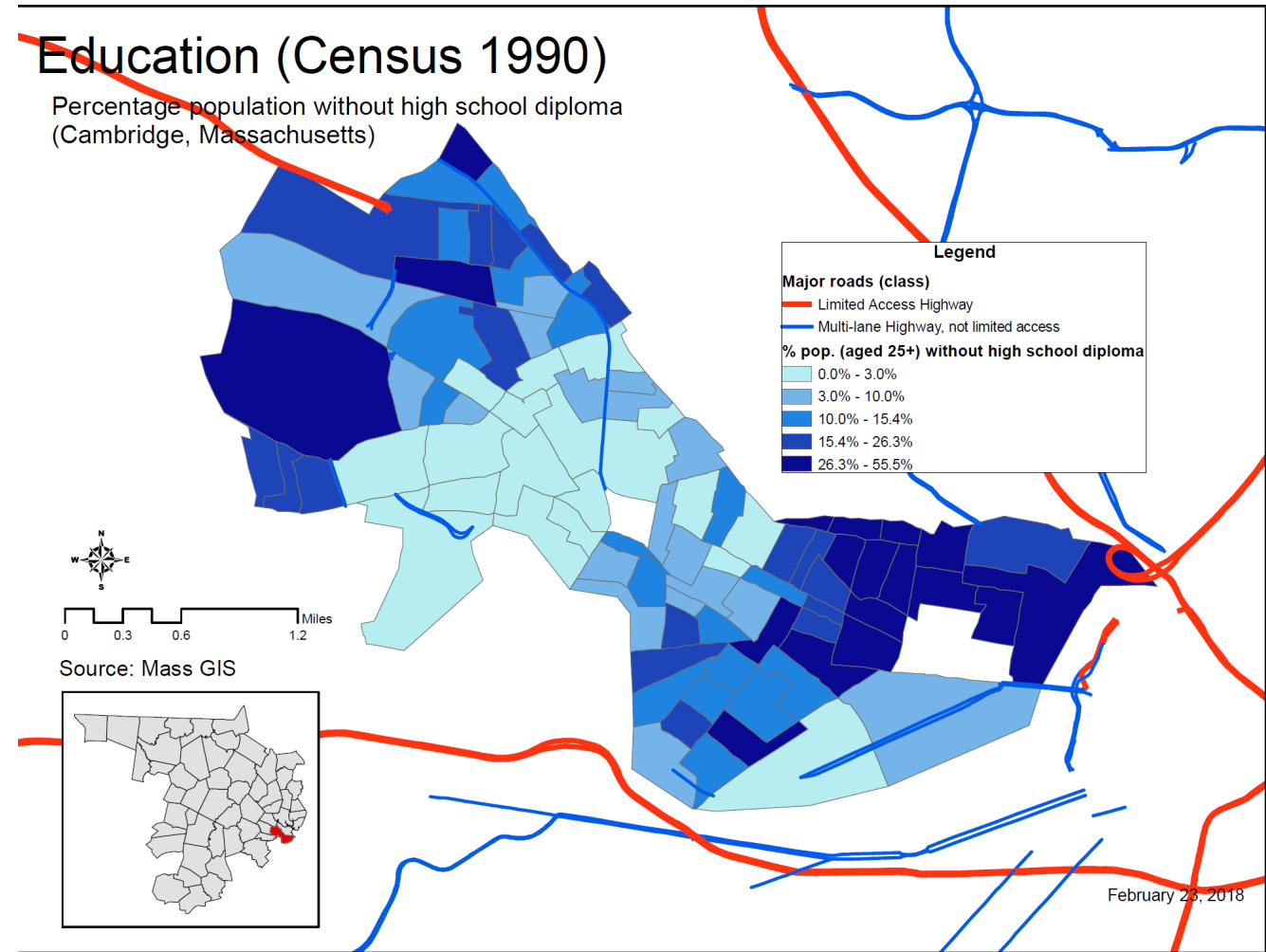
Things to note

Difference between OID and Unique Identifier

- Changeable vs Immutable
- Assigned by Arc vs Assigned in Dataset
- Order vs Unique Identifier in Dataset

Layout

- Title
- Color of excluded block groups
- Inclusion in legend
- Legend labels
- Size/position of map and inset
- Colors
- Boundaries



Lab 3

Reflection

Things to note

What to include

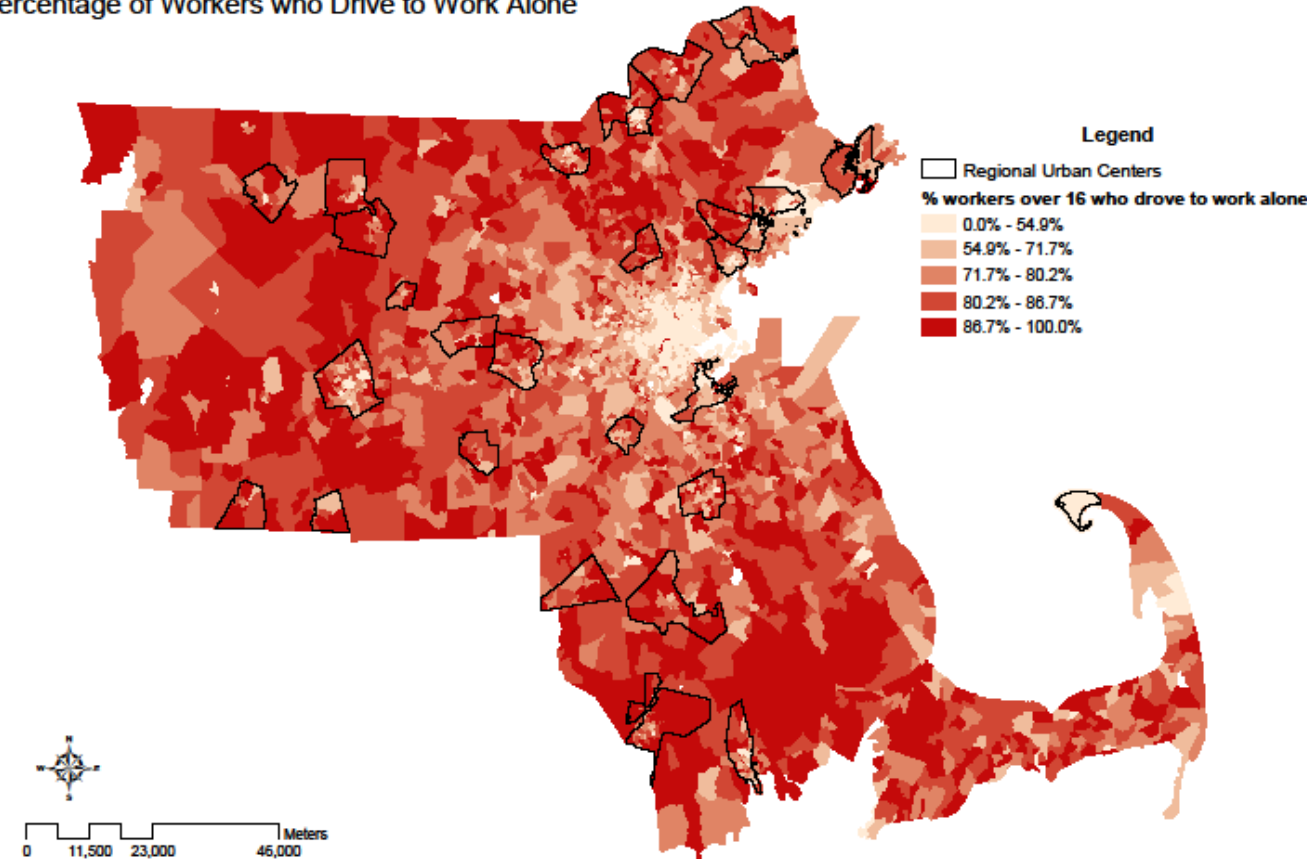
- Double check instructions
- Regional urban centres selection
- Explanation of classification
- Map interpretation

Layout

- Title
- Inclusion in legend
- Legend labels
- Size/position of map
- Colors
- Boundaries

Boston Commuting Patterns

Percentage of Workers who Drive to Work Alone



February 27, 2018

HOMework 1

Solutions and Reflection

Part 1 [60 points]

Population density [20]

- density calculation and symbology [5]
- exclusion with explanation [5]
- classification with explanation [4]
- reasonable map interpretation [3]
- Layout components [3]

Homeownership [20 points]

- ratio calculation and symbology [6]
- exclusion [2 points]
- classification with explanation [4]
- reasonable map interpretation [5]
- Layout components [3]

Choice [20 points]

- Variable choice and calculation [7]
- Classification and explanation [5]
- Interpretation [5]
- Layout components [3]

Part 2 [40 points]

Problem 4 [20 points]

- Map of shopping centre, population density, roads [10]
- Different symbols and/or sizes for shopping centers [4]
- Road layer symbology [2]
- tract outlines off/make them light[2]
- Legend/Labels/Layout/Color choice[2]

Problem 5 [20 points]

- Road selection and buffer with explanation [5]
- Table of shopping centre numbers [5]
- Map of all components [3]
- Zoomed in map with interpretation [5]
- Legend/Labels/Layout/Aesthetics [2]

Buffer

Check classification from MassGIS metadata

Select roads where

- 'class' = 1
- OR 'route_number' = '2'
- OR 'route_number' = '3'

Create Buffer

- 800m
- Dissolve to make processing easier/accurate

Select shopping centres

- 'Select by location' – using buffer as a cookie cutter
- Extract attribute table to DBASE/.dbf table

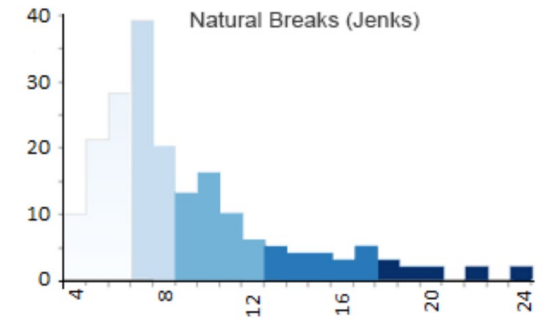
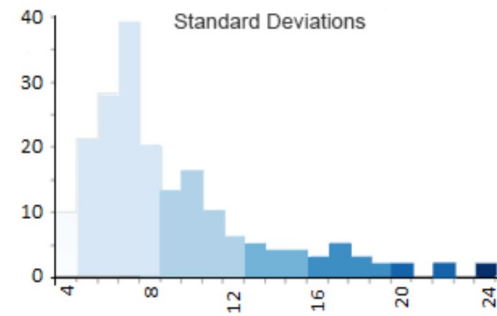
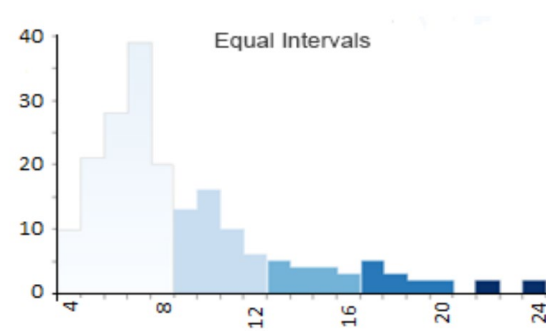
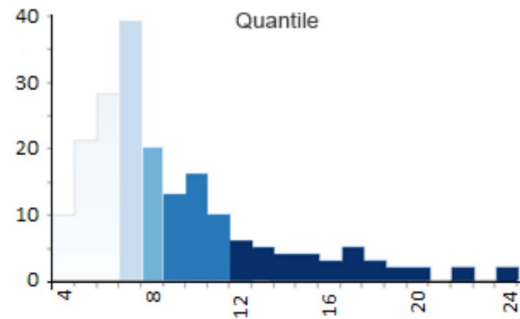
Summarize

Open in Excel

Make Pivot Table

Type	Buffer (800m)	MSA Count
Community Center	33	106
Neighborhood Center	47	194
Regional Mall	6	14
Retail	6	39
Super Regional Mall	5	10
Grand Total	97	363

A note on classification



Source: <https://gisgeography.com/choropleth-maps-data-classification/>

Things to consider

- No one answer
- Distribution of data
- Purpose of map
- Within-class vs Cross-Class variation
- Legibility
- See solution