

11.188/205 Lab Reflection



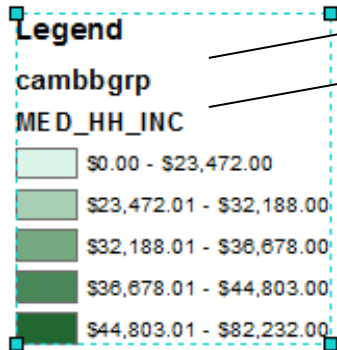
Labs One and Two

Lab 1

Making legend more readable

Layer name

Field name



Legend Item Selector

Preview

Layer Name
Heading
Label Description

Horizontal Bar with Heading, Labels, and Description Horizontal Single Symbol Description Only

Horizontal Single Symbol Label Only Horizontal Single Symbol Layer Name and Description

Layer Name Heading

OK Cancel

Legend Properties

General Items Layout Frame Size and Position

Apply settings to selected item(s)

Select All Select None

cambbgrp

Font

Apply to all labels

Map Extent Options

Only show classes that are visible in the current map extent

Show feature count

(Count) Show thousands separator

Use current index feature as the map extent (data driven pages)

Item Columns

Place item(s) in a new column

Column count for item(s) 1

Style... OK Cancel Apply

Lab 1

Formatting labels

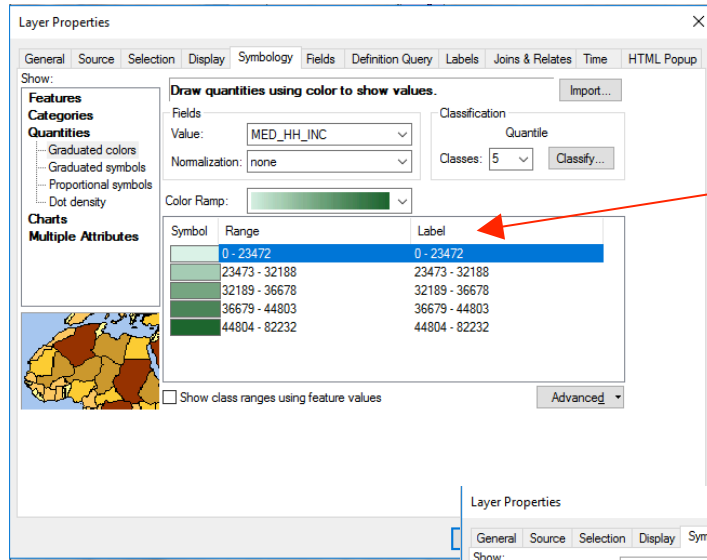
Decimal points

Thousand separators

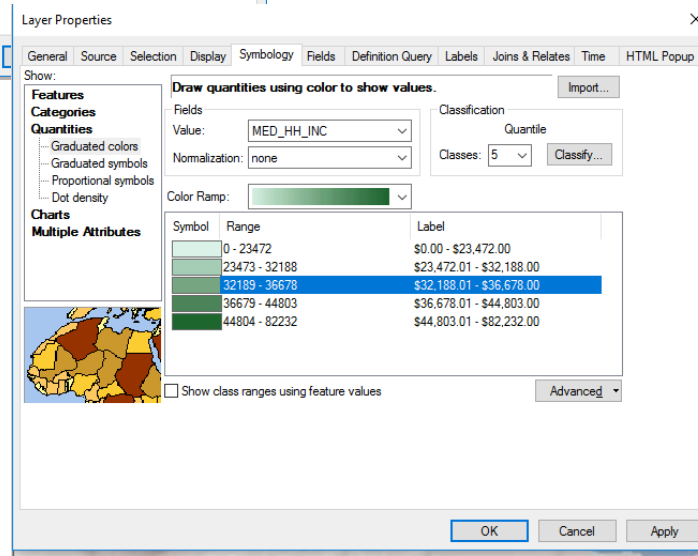
Percentage

Dollar signs

Customized labels

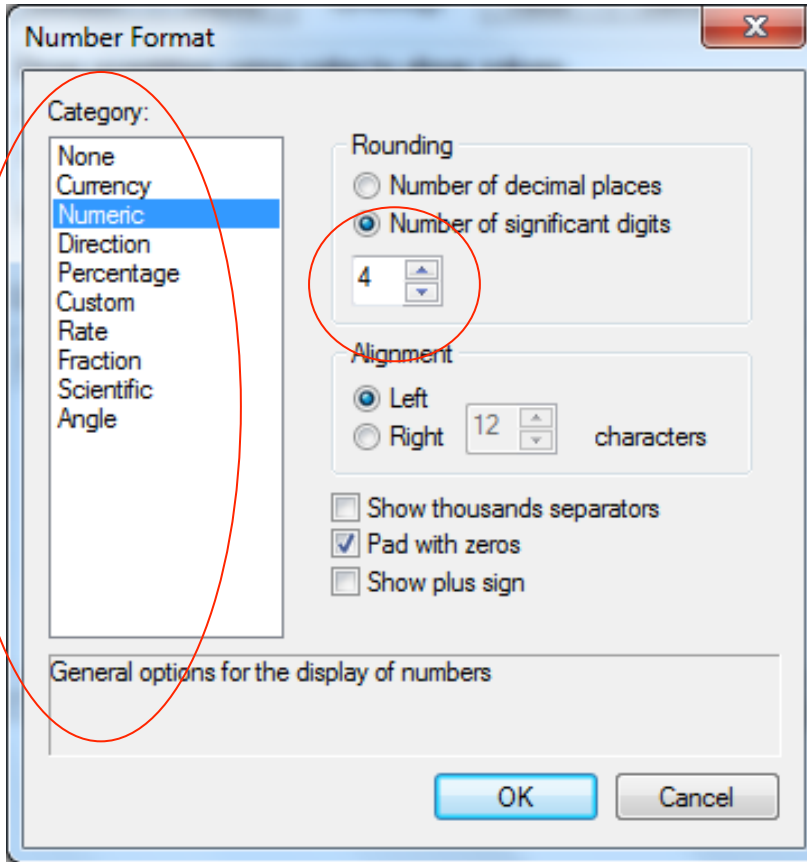


Click "Label" and "Format Labels..."



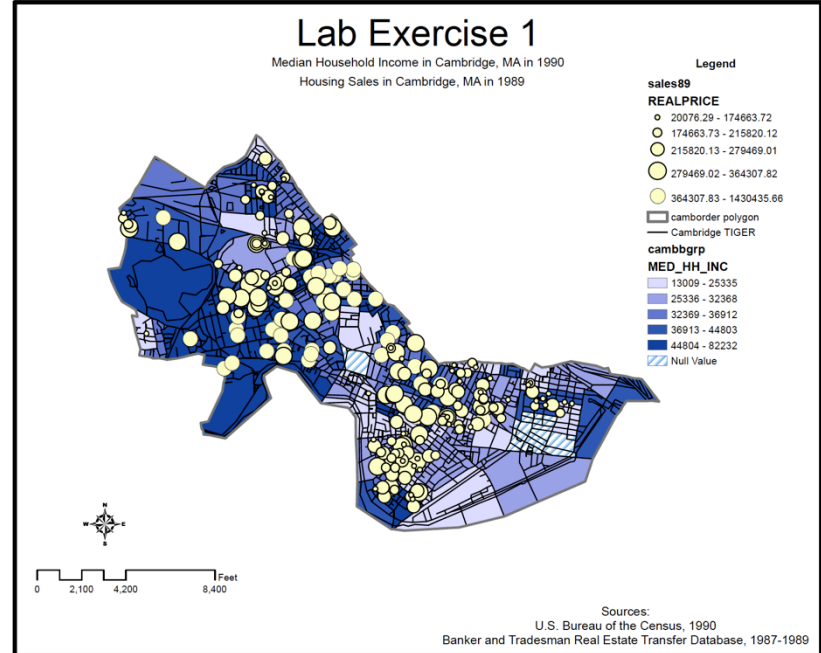
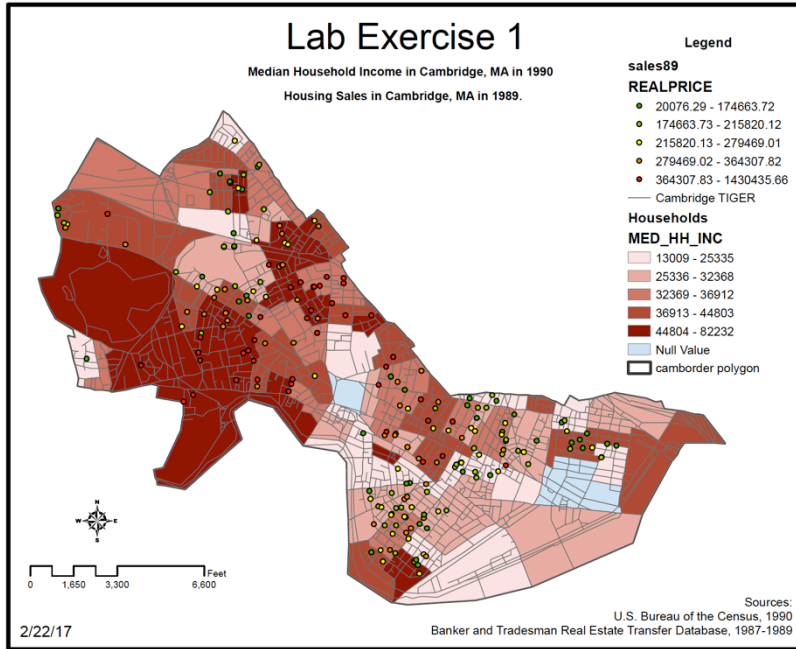
Tips

Under properties/
Symbology, click on
“label” to format
layer info.



Lab 1

Sizes



Sample work

Lab Exercise 1 Median Household Income (1990) and Housing Sales (1989) in Cambridge, MA

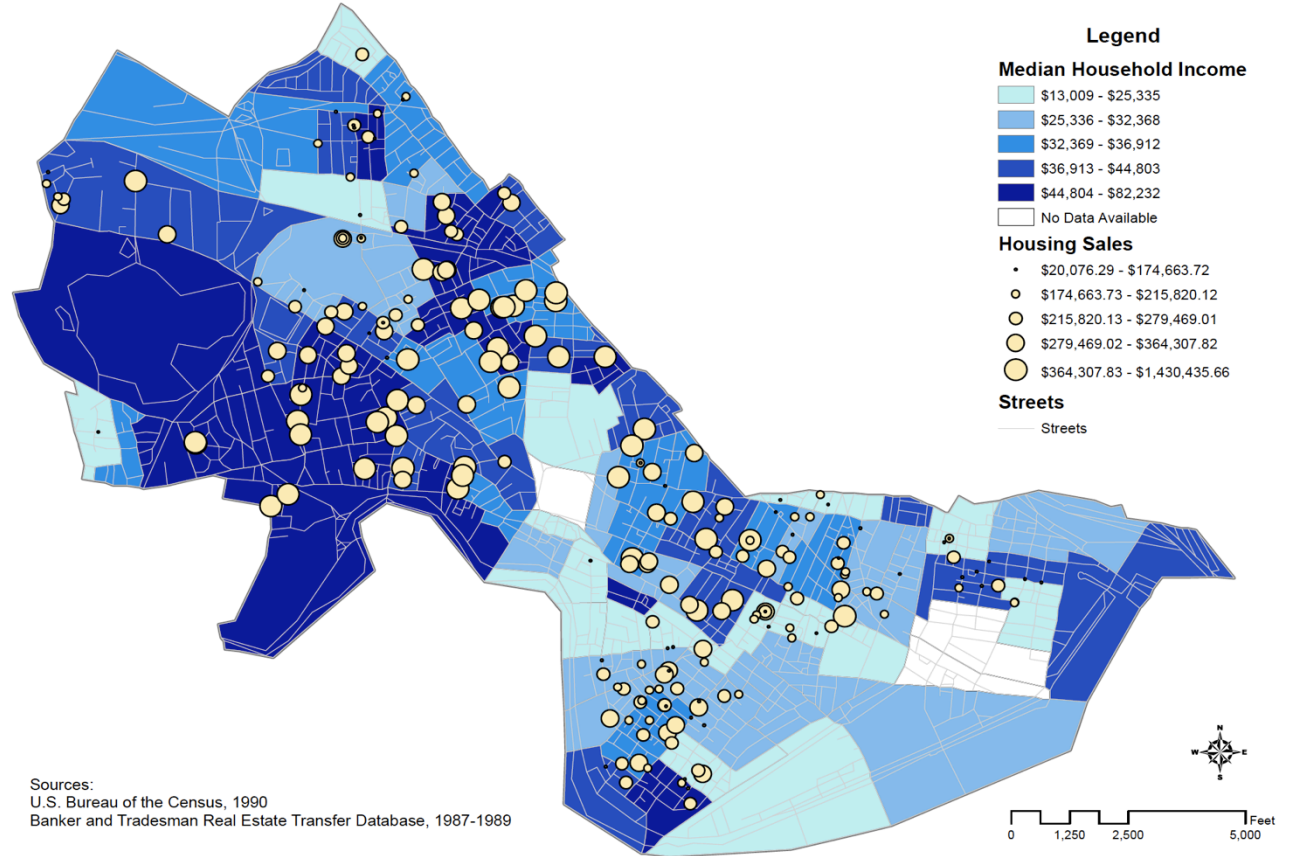
Colors

Size of points

Outlines

Layer names

Units



Labs 1 & 2

Read and follow the instructions

Submit all parts of the exercise

If possible, please submit one PDF or Word file

Lab 2

When referencing block groups:

Can use state-county-tract-block group identifier, **Stcntrbg**.





Or, if it's clear what state it is in, give the census tract number and block group numbers.

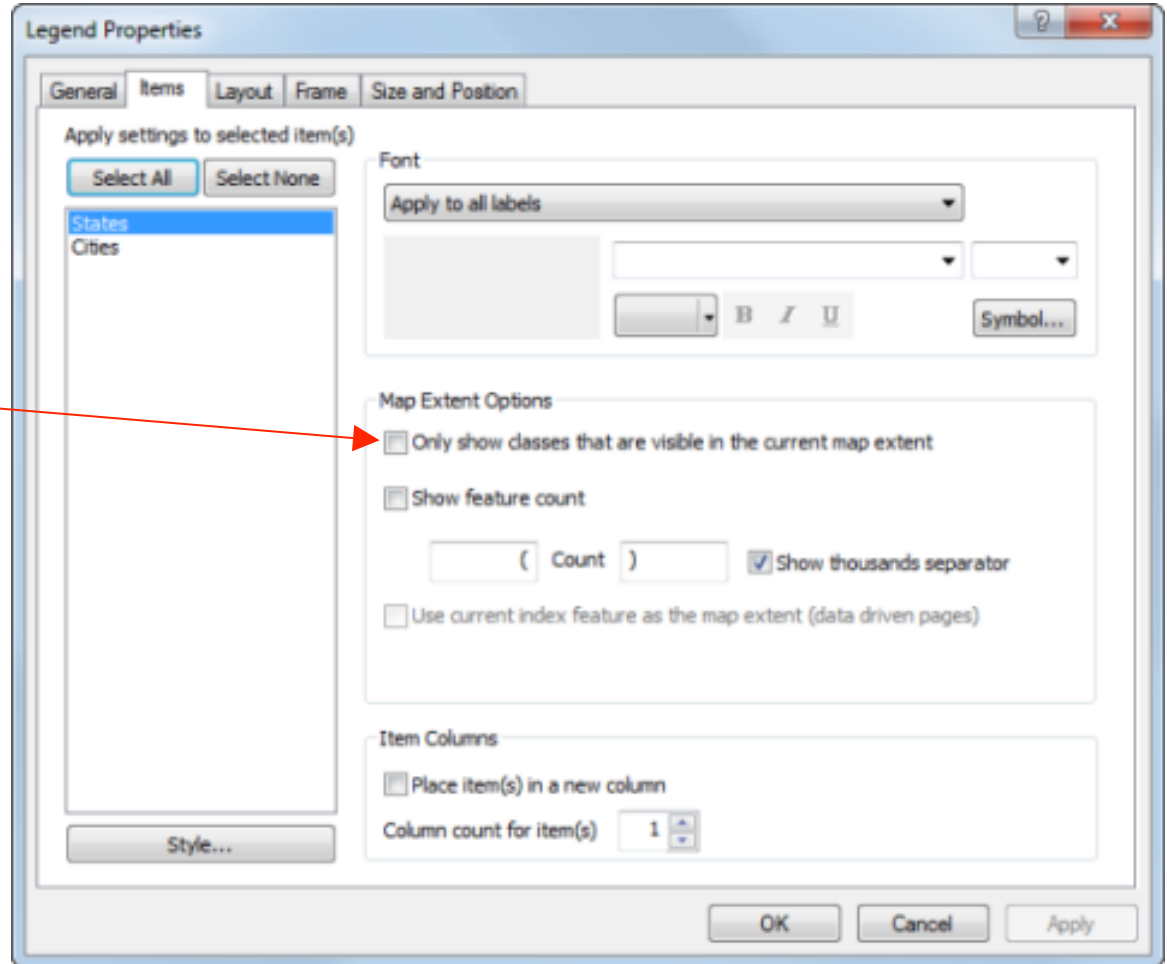
Remember that the feature ID is not the same as the block group number.

Lab 2

How to remove classes that are not displayed

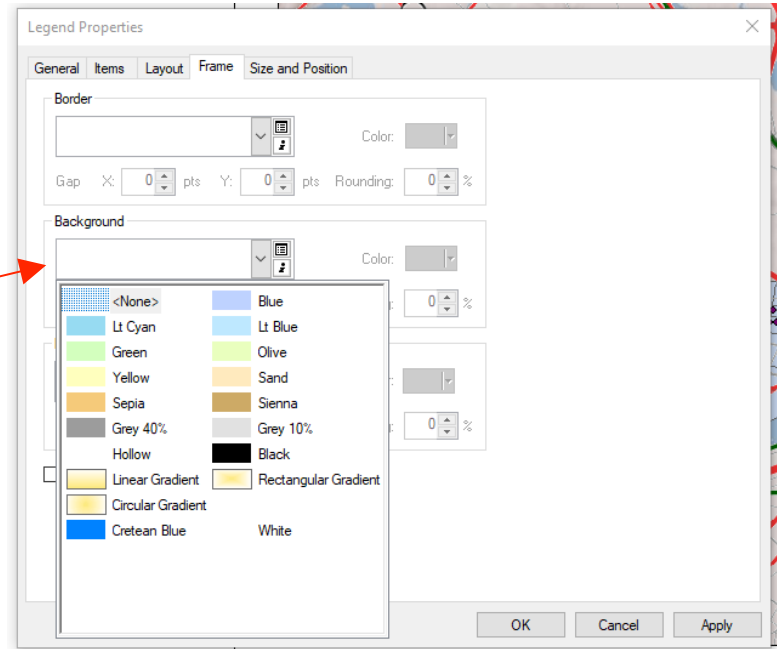
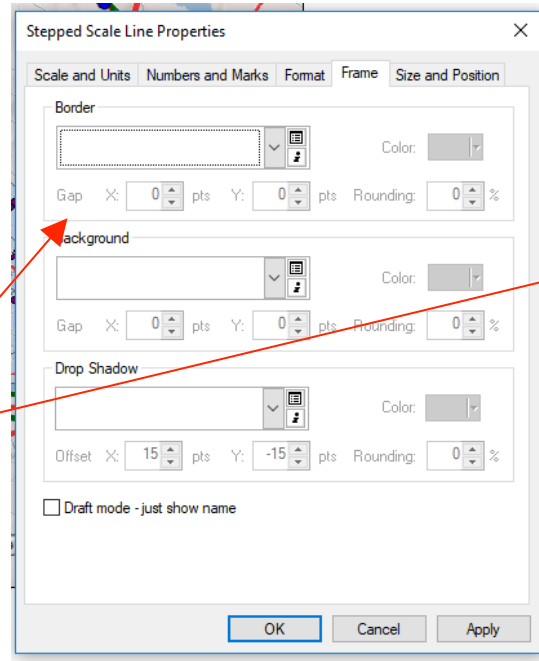
Major Roads

-  Limited Access
-  Multilane Highway
-  Other numbered
-  Major Road



Lab 2

Can make text background opaque to improve readability



February 20, 2016
Source: MassGIS

Tips

Right-click on scale bar to customize it:

- . Set division units
- . Set division value
- . Set number of divisions and subdivisions
- . When resizing: Adjust width

