

Non-Seismic Exploration Techniques:

Electrical Resistivity:

Overview: *This process involves placing probes in the ground and passing a current between them. By measuring the resistance of this current you are able to tell within a degree of certainty whether there is oil or not.*



www.digistar.mb.ca/minsci/finding/resist1.htm

“Electrical and electromagnetic data are analyzed primarily to yield the electrical resistivity of the rock formation where currents have been injected or induced to flow. The resistivity is in turn a strong function of the porosity and pore fluid saturation. (1)”

Potential Problems: *The steel casing of the pipes underground can act as a barrier to the electrical signals.*

“Steel casing severely attenuates electromagnetic signals transmitted or received from within the pipe. The casing typically acts as a low-pass filter, attenuating signal above 10 Hz and virtually eliminating signals above a few hundred Hz. ... This means that field measurements are more difficult in steel casing, and field data predominantly reflects casing effects. (1)”

Solutions: *By taking into account the effects that the pipe has on the signal, you can separate it when you interpret the data and just get the information you want.*

“Current research suggests, however, that the shielding effect of the steel pipe is a fairly simple function of the thickness, electrical conductivity, and magnetic permeability of the steel pipe segment surrounding the sensor. Although EM fields are severely attenuated by the steel pipe, the response may be calculated with fairly simple numerical models and separated from the formation effect using straightforward techniques. ... Thus, if the properties are obtained, the response due to the casing may be easily separated from the total field, leaving the formation response as a residual. (1)”

Experimental Methods:

Earth's field NMR:

By using the earth's magnetic field, you can disrupt water molecules. By measuring this disruption you can have a good idea of whether there is water in an area. This technique is used for finding groundwater but it might be able to be used to find oil as well.

“This technique involves locally perturbing the direction and amplitude of the earth's ambient magnetic field to affect the dipole moment of hydrogen-based molecules (i.e. water or oil) within the pore structures. After the perturbing field is shut off, a decay signal is generated in regions containing mobile hydrogen atoms. These data can be used to estimate the porosity, saturation, and possibly even permeability of these volumes. ... Recently, a project has been initiated through the DeepLook consortium to study the feasibility of extending this technology to oil and gas exploration. (1)”

Electrical Vs. Seismic:

Electric is better at telling if there is oil and Seismic is better at telling if there is gas.

Seismic is also better at characterizing the structure of the reservoir.

“Although electrical data are sensitive to variations in storage and saturation of reservoir liquids, seismic techniques are more sensitive to the presence of the reservoir gases. In addition, the higher resolution offered by seismic techniques is superior in mapping reservoir structure. (1)”

Magnetic:

Overview: *By measuring the magnetic field, you can tell where there is likely to be oil because the rocks that may contain oil have very low magnetic readings. The magnetic field can be measured with an instrument called a magnetometer which can be flown over an area or used on the ground.*

“Magnetic surveys are usually made with magnetometers borne by aircraft flying in parallel lines spaced two to four kilometers apart at an elevation of about 500 meters when exploring for petroleum deposits. ...Ground surveys are conducted to follow up magnetic anomaly discoveries made from the air. Such surveys may involve stations spaced only 50 meters apart. ...Magnetic effects result primarily from the magnetization induced in susceptible rocks by the Earth's magnetic field. Most sedimentary rocks have very low susceptibility and thus are nearly transparent to magnetism. Accordingly, in petroleum exploration magnetics are used negatively: magnetic anomalies indicate the absence of explorable sedimentary rocks. (2)”

Methods:

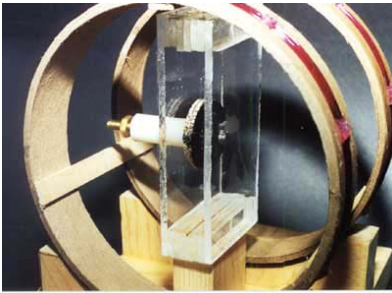
Proton-precession magnetometer: *One type of magnetometer which utilizes the disruption of protons in oil to measure magnetism. .*



www.eri.u-tokyo.ac.jp/KOHO/Yoran2001ep/08_05.html

“One such method involves the proton-precession magnetometer, which makes use of the magnetic and gyroscopic properties of protons in a fluid such as gasoline. In this method, the magnetic moments of protons are first aligned by a strong magnetic field produced by an external coil. The magnetic field is then turned off abruptly, and the protons try to align themselves with the Earth's field. However, since the protons are spinning as well as magnetized, they precess around the Earth's field with a frequency dependent on the magnitude of the latter. The external coil senses a weak voltage induced by this gyration. The period of gyration is determined electronically with sufficient accuracy to yield a sensitivity between 0.1 and 1.0 nanotesla. (3)”

Schmidt vertical-field balance: *Another type of magnetometer that measures the relative magnetic field by observing the torque produced by the earth's magnetic field on the instrument. Using this instrument involves setting up observation stations along the region of interest approximately a half mile apart.*



www.xtrsystems.com/magnetometer/coil

“The Schmidt vertical-field balance, a relative magnetometer used in geophysical exploration, uses a horizontally balanced bar magnet equipped with mirror and knife edges. (4) “Field procedure consisted of observation stations located at .5 mile intervals for reconnaissance surveys and .025 mile intervals for detail surveys. (5)”

Evaluation: *The field balance is a more accurate way of exploring for oil when the region of interest is shallow.*

“Field experiments showed that aerial magnetometers, proton precession magnetometers, and gravity surveys were not sufficiently accurate to map the small topographic lows of the Precambrian granite. Our conclusion was that only the field balance, ...could acquire the necessary data. (5)”

Gravitational:

Overview: *This procedure involves taking readings about a kilometer apart throughout the region with a device called a gravimeter. The gravimeter measures the*

gravitational field and this reading correlates with the density of the region. By studying the differences in the density, you can predict which areas of the region might contain oil

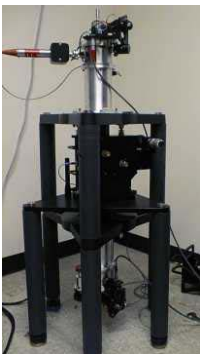


www.seismo.unr.edu/ftp/pub/louie/class/492/album02/

“Gravity differences occur because of local density differences. Anomalies of exploration interest are often about 0.2 mgal. ...Gravity surveys on land often involve meter readings every kilometer along traverse loops a few kilometers across. ...In most cases, the density of sedimentary rocks increases with depth because the increased pressure results in a loss of porosity. Uplifts usually bring denser rocks nearer the surface and thereby create positive gravity anomalies. Faults that displace rocks of different densities also can cause gravity anomalies. Salt domes generally produce negative anomalies because salt is less dense than the surrounding rocks. Such folds, faults, and salt domes trap oil, and so the detection of gravity anomalies associated with them is crucial in petroleum exploration. (2)”

Conventional Gravimeter Vs. Gravity Gradiometry: *A gravity*

gradiometer is another type of gravimeter that can give more information about the gravitational field of a region. This information can give more accuracy in oil exploration but interpretation of it is underdeveloped and is usually done using techniques for interpreting conventional gravimeter data.



www.microgsolutions.com/gradiometer.press.htm

“The conventional gravimeter measures a single component (the vertical component) of the gravity field vector. In contrast, a gravity gradiometer can measure up to five of the nine terms in the gravity field’s gradient tensor which completely describes the anomalous gravity field gradient. ...Note how the two gradiometer measurements better emphasize the structural highs and lows as well as the bounding fault zones. ... interpretation of gravity gradiometry data is presently immature in practice and application. ...However, many existing gravity and magnetic interpretation algorithms are easily and naturally adapted to the interpretation of gravity gradiometer data. (6)”

Conclusion: Each of these methods is unique and would provide valuable information in the exploration stage. Based on my research, it is my recommendation that we utilize each of these techniques, in addition to seismic technology, in order to get a comprehensive view of the region. I believe that it is crucial to have as much information as we can from exploration so that we can reduce the impact of drilling needlessly.

Sources

1. “Electromagnetic methods for development and production: State of the art”
Authors: Michael Wilt and David Alumbaugh
2. "Earth exploration" Encyclopædia Britannica from Encyclopædia Britannica Premium Service. <<http://www.britannica.com/eb/article?eu=120713>>
[Accessed November 7, 2003].)
3. “Earth" Encyclopædia Britannica from Encyclopædia Britannica Premium Service. <<http://www.britannica.com/eb/article?eu=108976>>
[Accessed November 7, 2003].)
4. "magnetometer" Encyclopædia Britannica from Encyclopædia Britannica Premium Service. <<http://www.britannica.com/eb/article?eu=51255>>
[Accessed November 7, 2003].)
5. “Some unconventional geophysical methods: A review”
Author: D.O. ACREY
6. “Gravity Gradiometry in resource exploration”
Author: Bob Pawlowski

