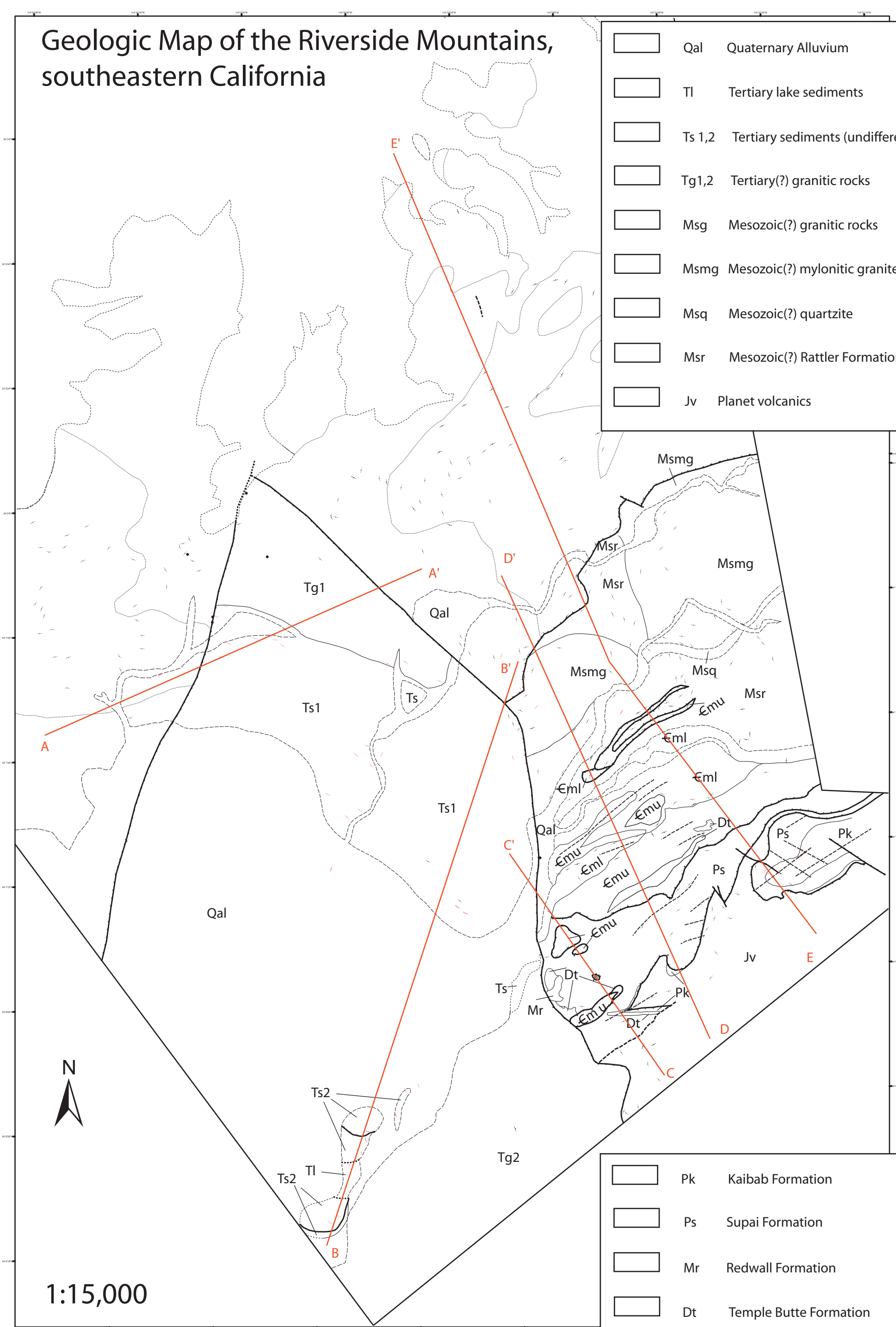


Geologic Map of the Riverside Mountains, southeastern California

	Qal	Quaternary Alluvium
	Tl	Tertiary lake sediments
	Ts 1,2	Tertiary sediments (undifferentiated)
	Tg1,2	Tertiary(?) granitic rocks
	Msg	Mesozoic(?) granitic rocks
	Msmg	Mesozoic(?) mylonitic granite
	Msq	Mesozoic(?) quartzite
	Msr	Mesozoic(?) Rattler Formation
	Jv	Planet volcanics



1:15,000

	Pk	Kaibab Formation
	Ps	Supai Formation
	Mr	Redwall Formation
	Dt	Temple Butte Formation
	Emu	Cambrian Muav Marble (upper)
	Eml	Cambrian Muav Marble (lower)
	pC	Precambrian basement gneiss