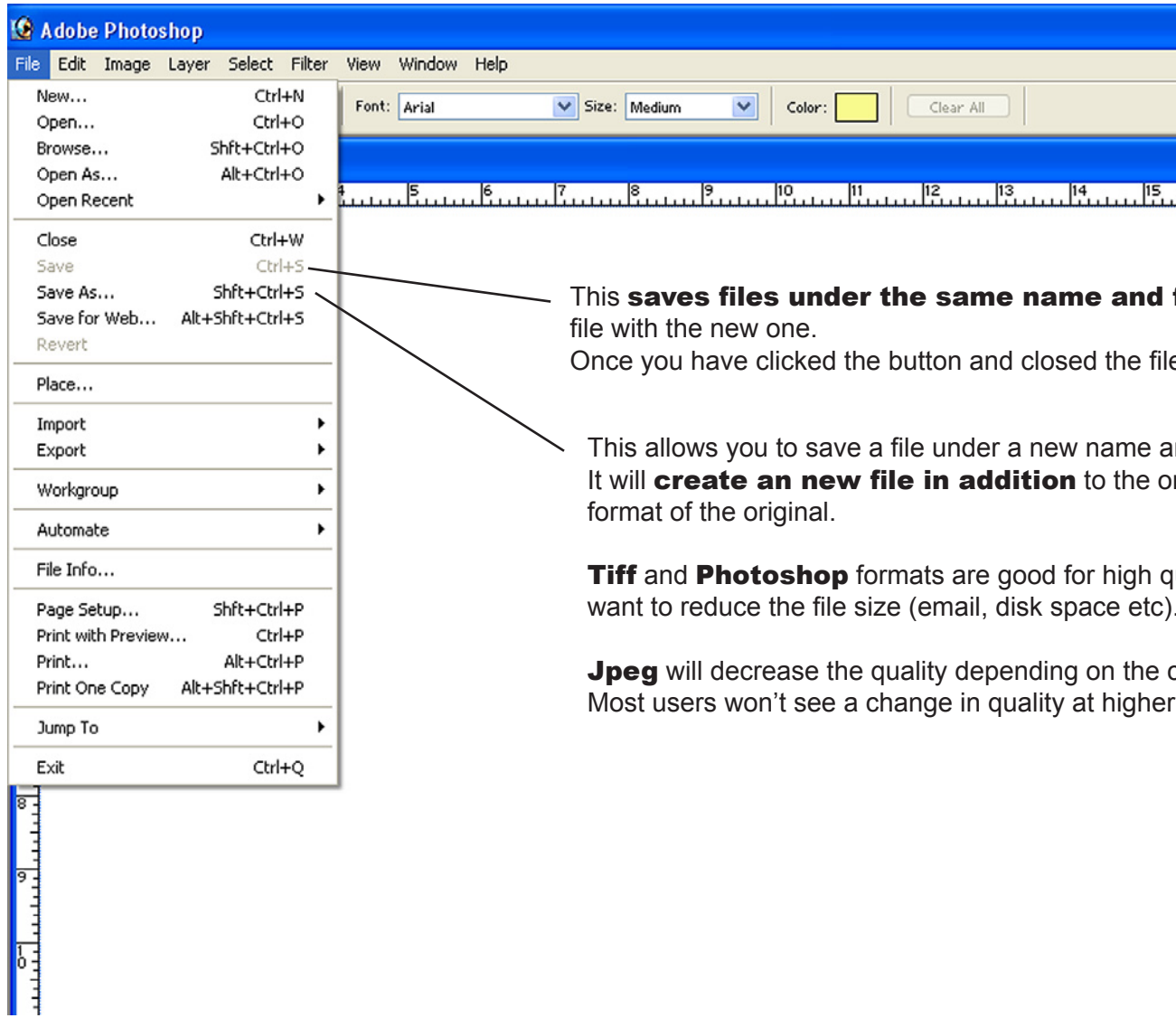


Photoshop for Design

File menu

Open, close, save, print, place, import etc.....



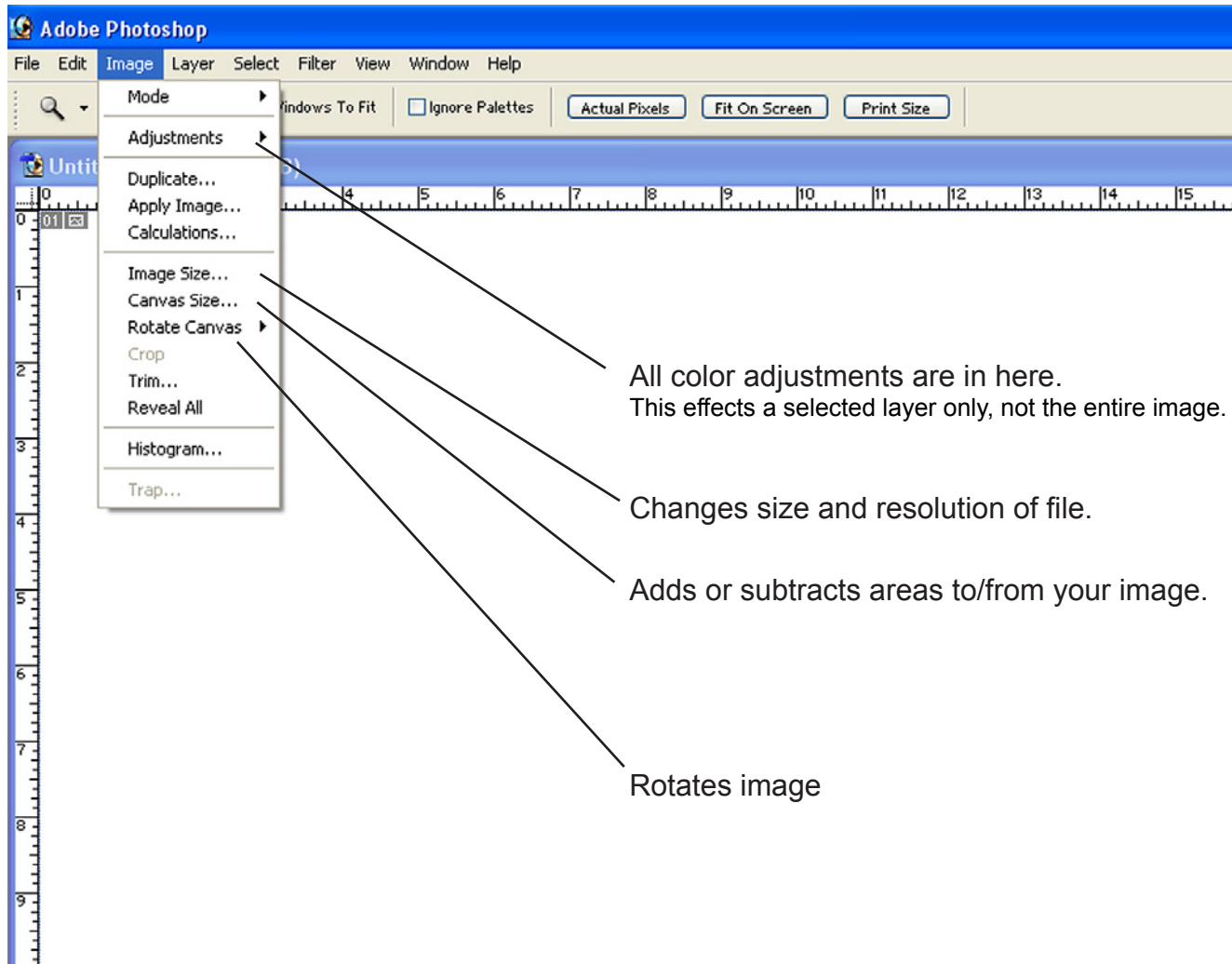
This **saves files under the same name and format**. You will replace the original file with the new one.
Once you have clicked the button and closed the file you won't get back to the original.

This allows you to save a file under a new name and format.
It will **create a new file in addition** to the original unless you use the name and format of the original.

Tiff and **Photoshop** formats are good for high quality files. Use Jpeg format when you want to reduce the file size (email, disk space etc).

Jpeg will decrease the quality depending on the compression level that you pick.
Most users won't see a change in quality at higher levels (8-12).

Image Under this menu you will find most things to manipulate your image.



Color adjustments

These adjustments allow you to change colors, color curves, color levels etc. Whatever you select will effect the 'selected layer' only! Other layers of your file won't be effected.

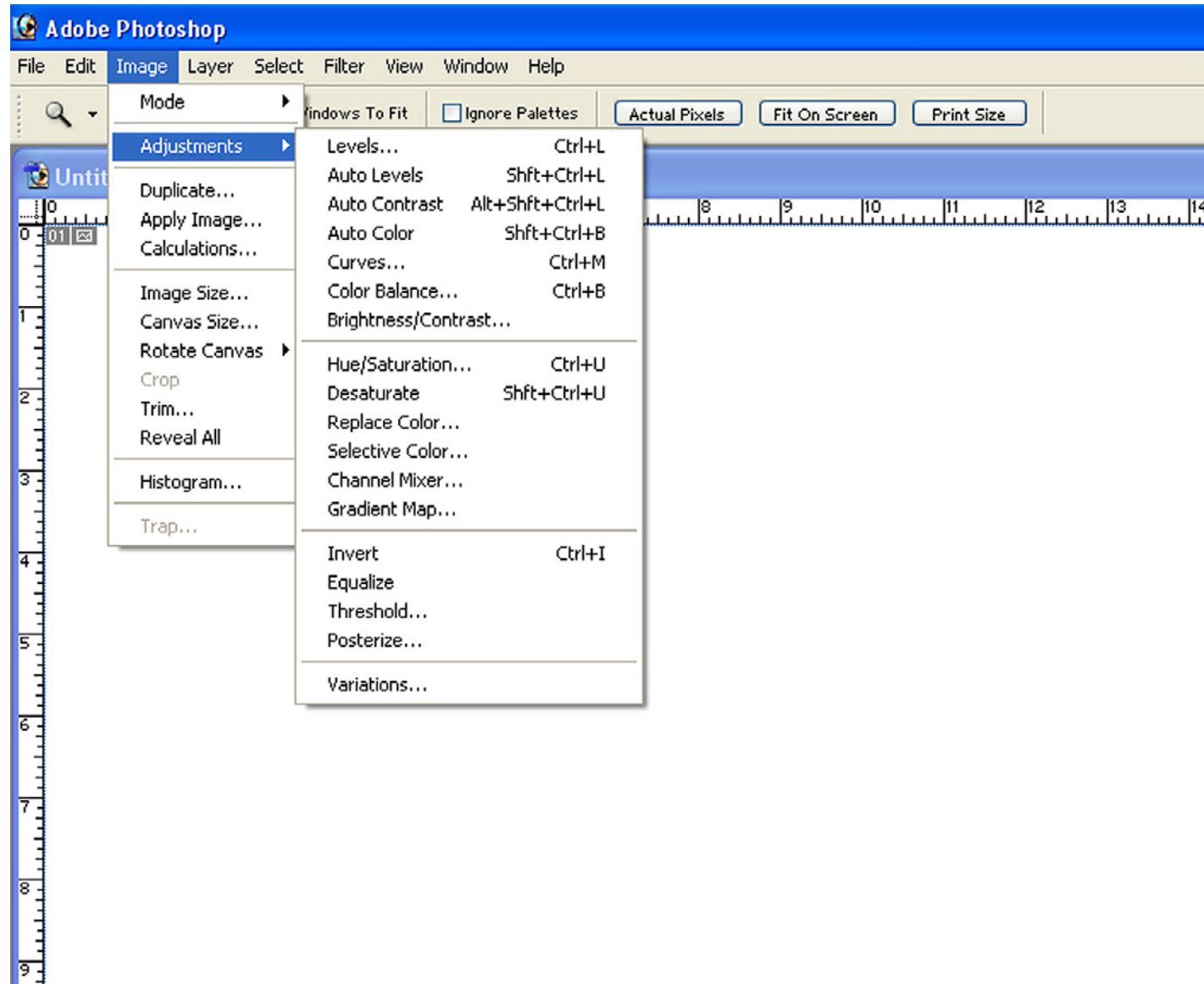
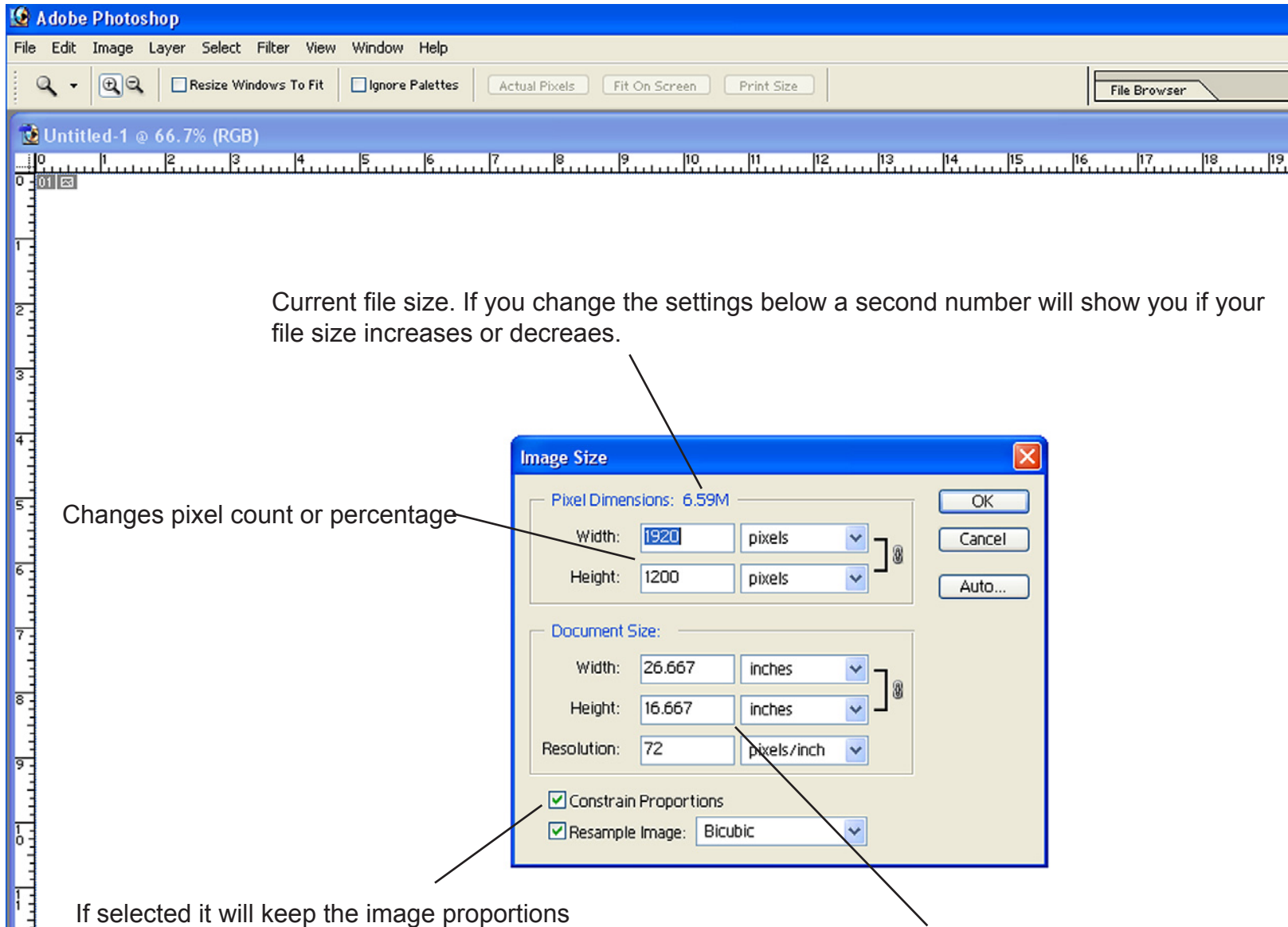


Image Size

Define file dimensions and resolution



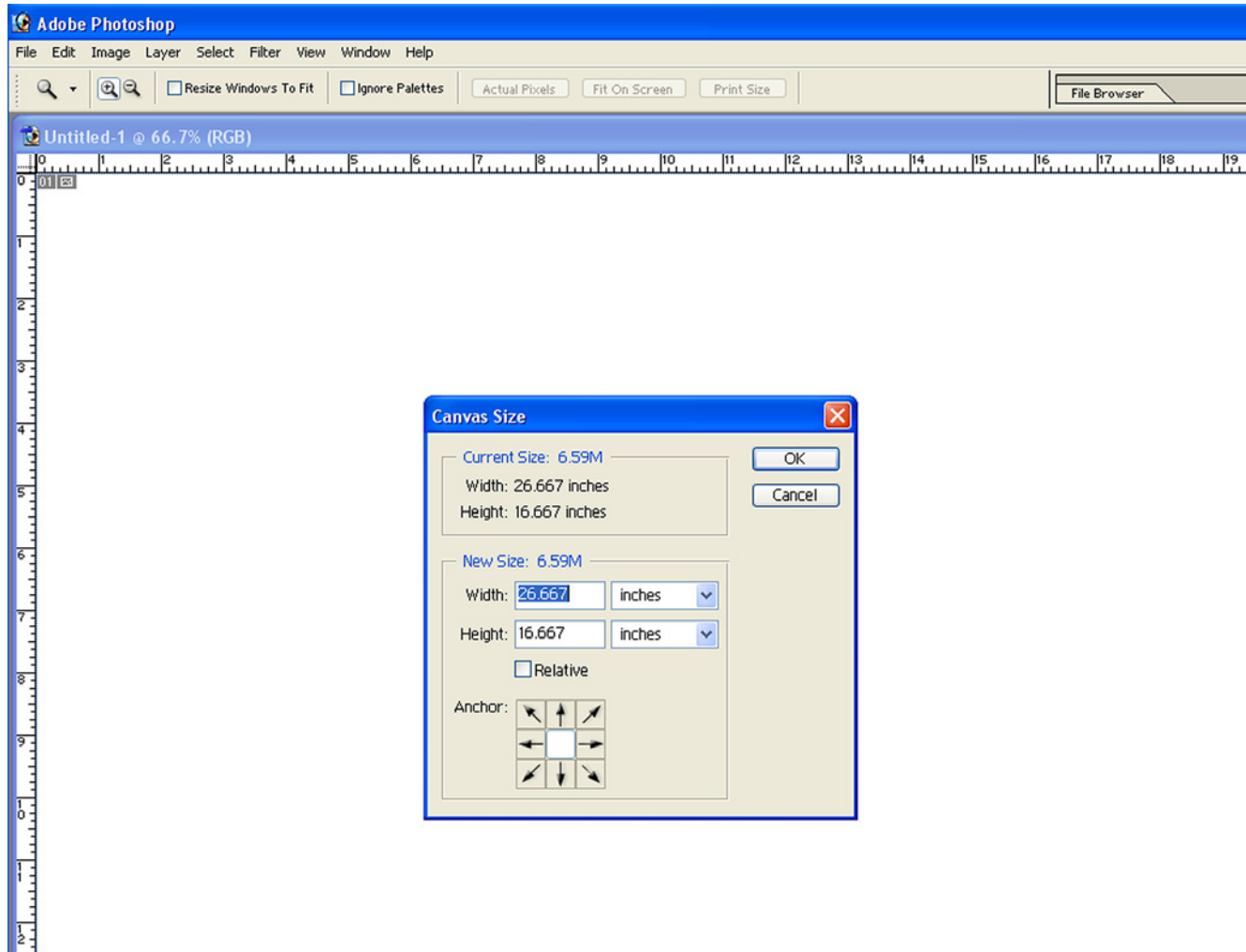
Canvas size

This tool allows you to add space to your image. You can make the canvas larger or smaller.

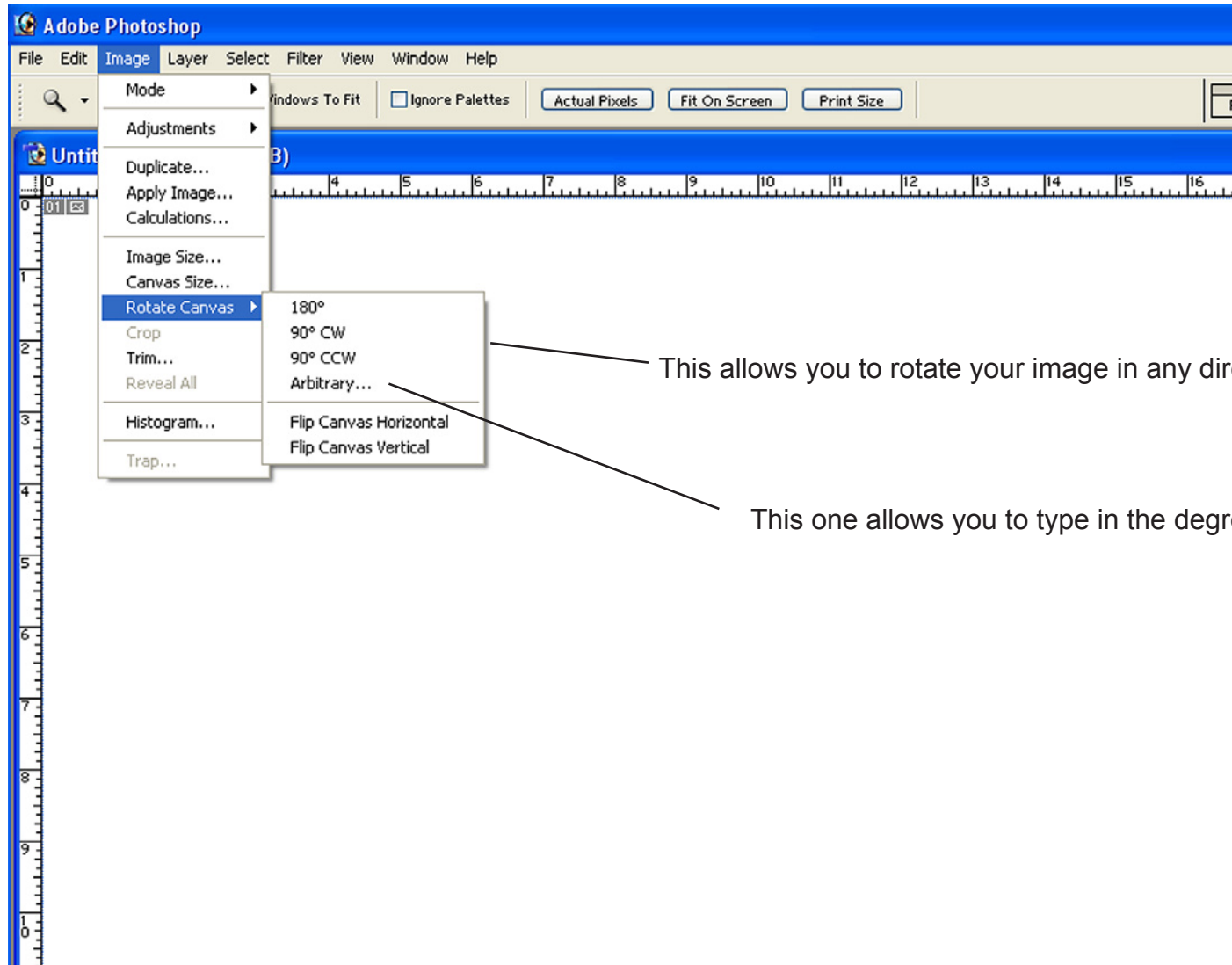
If you make it larger it will add extra surface to your image. It will use the 'background color' for the addition.
If the color is white, you will add more white space to your image.

If you make the canvas smaller it will crop your image.

Anchors allow you to fix sides or corners. The tool will add or subtract to/from or to the opposing side.

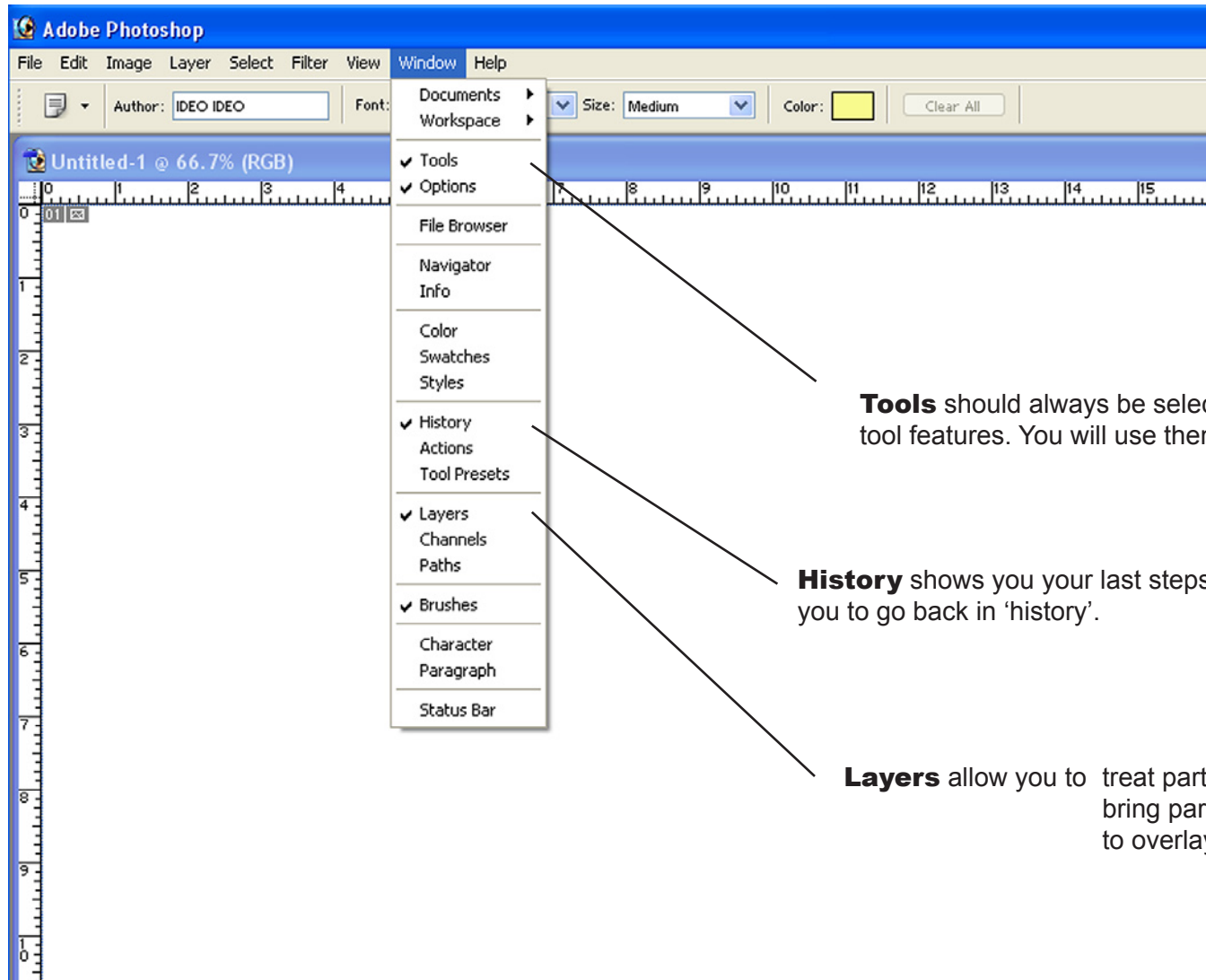


Rotate the entire image



Windows

In the beginning you will need **Tools**, **Layers** and **History**.
Select them and they will show up on your desktop.



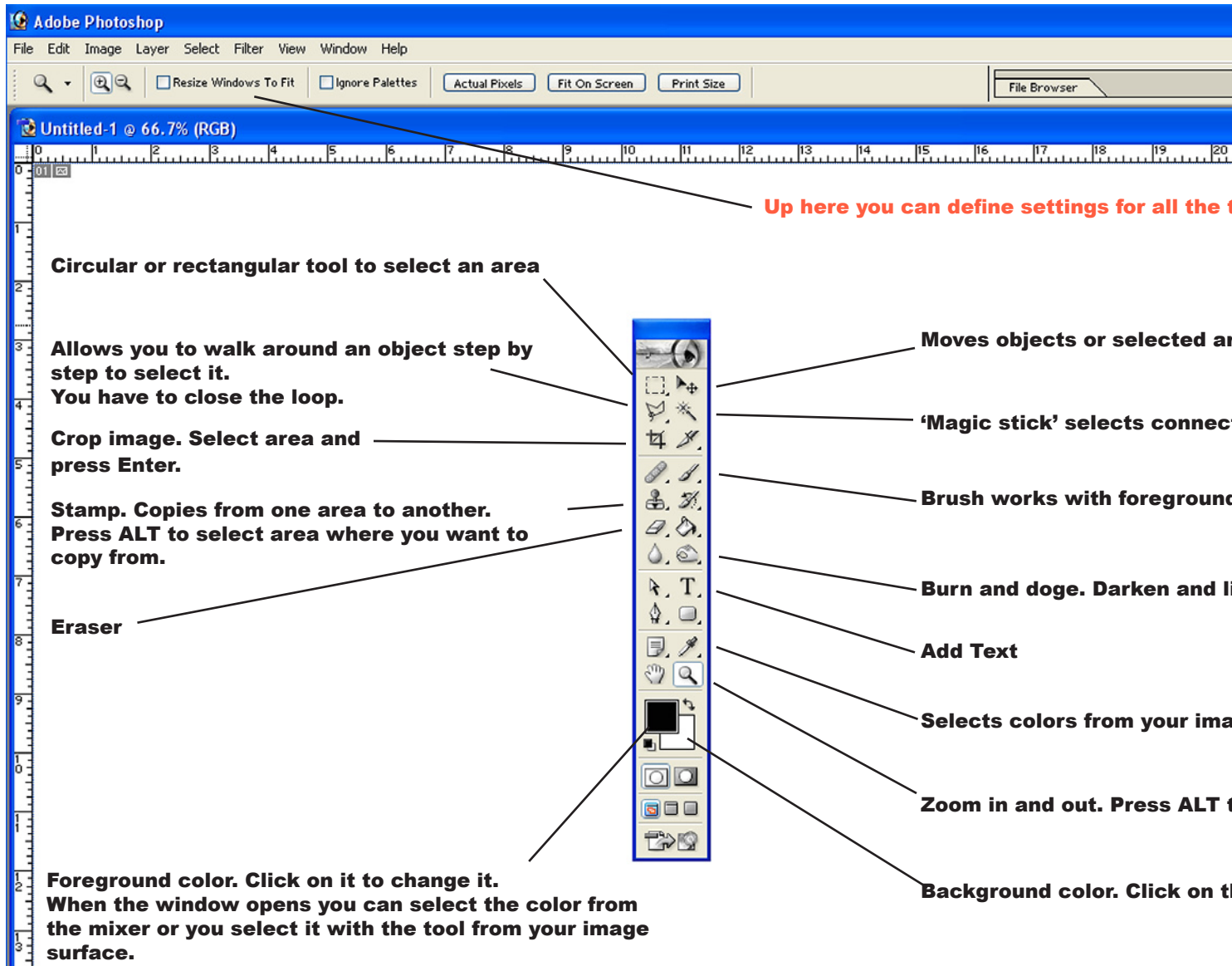
Tools should always be selected. It contains all important tool features. You will use them frequently.

History shows you your last steps. It allows you to go back in 'history'.

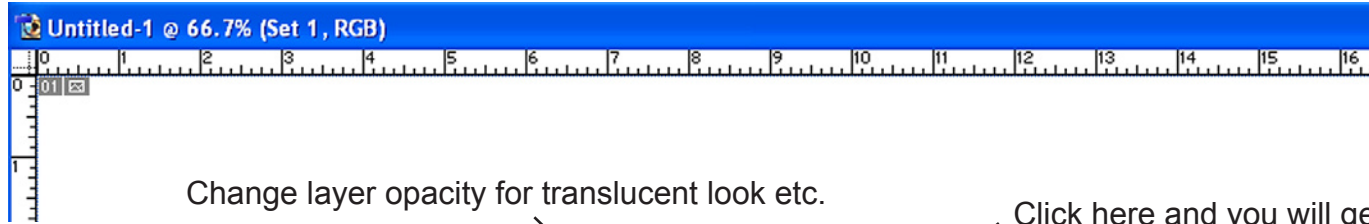
Layers allow you to treat parts of the images individually bring parts to the front or back to overlay areas

Tools

Your most important window!



Layers



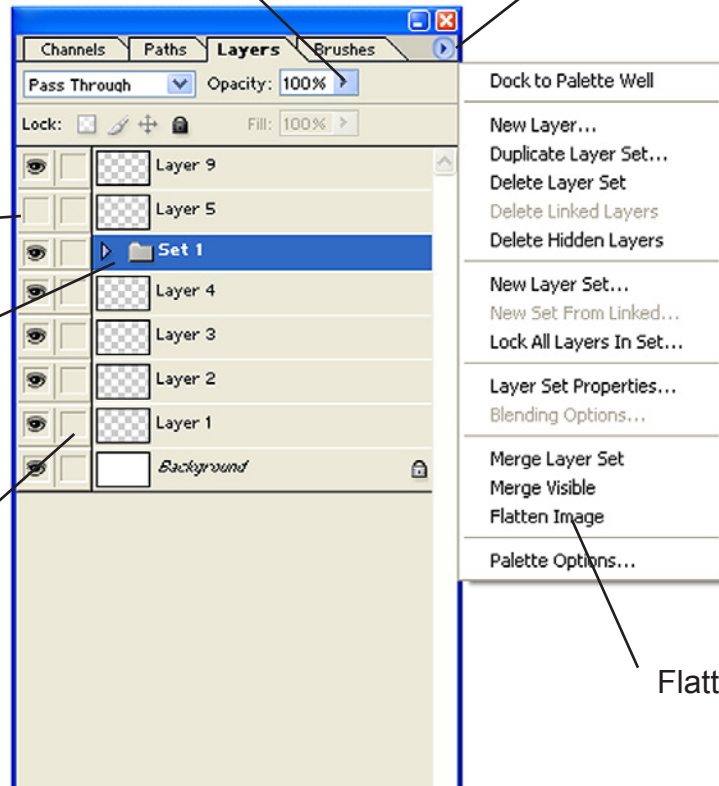
Change layer opacity for translucent look etc.

Click here and you will get more layer options

Make layer invisible by deselecting this field

You can group layers in folders/sets

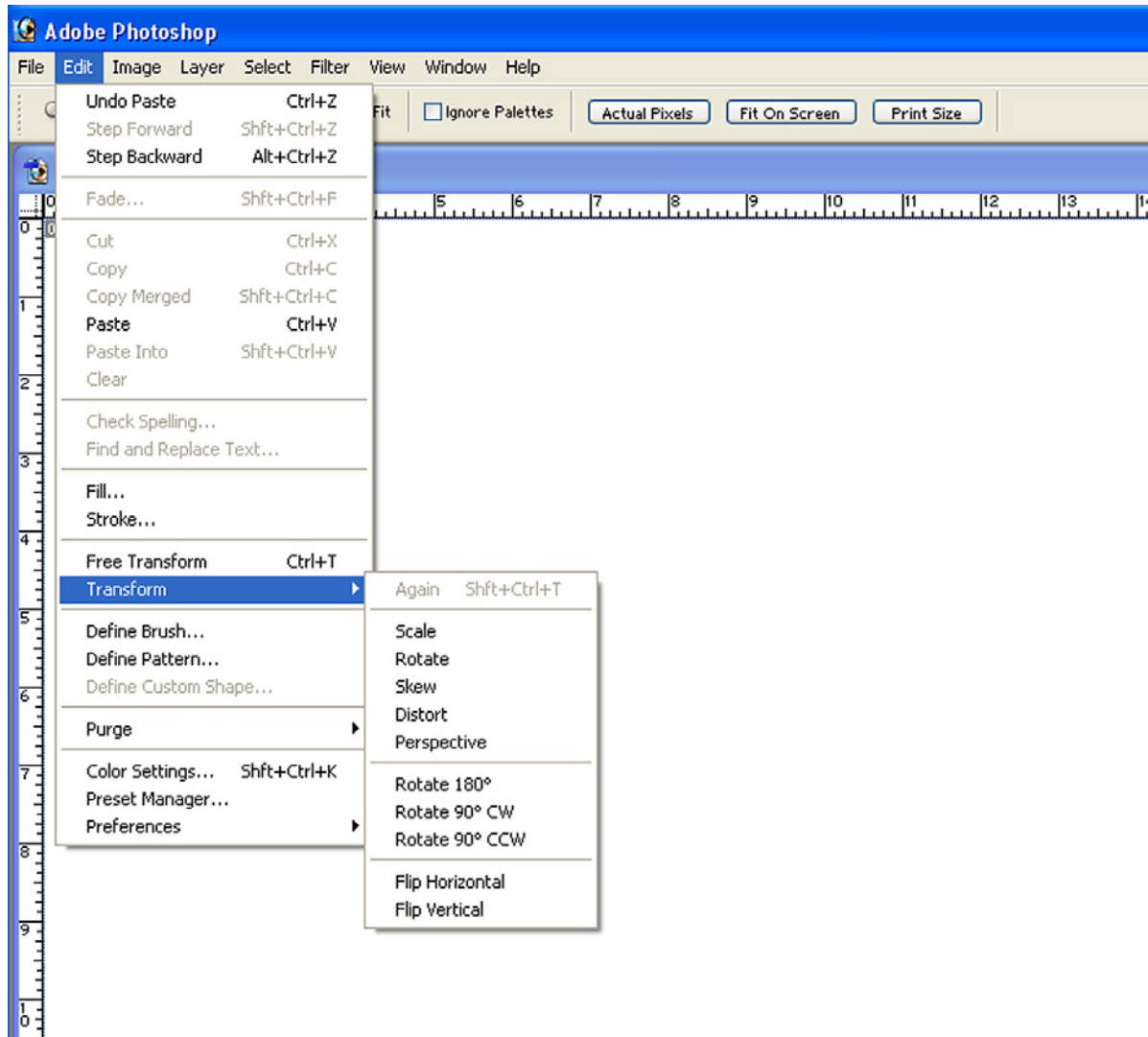
You can link layers and move them together by selecting this field.



Flattens entire image to one layer

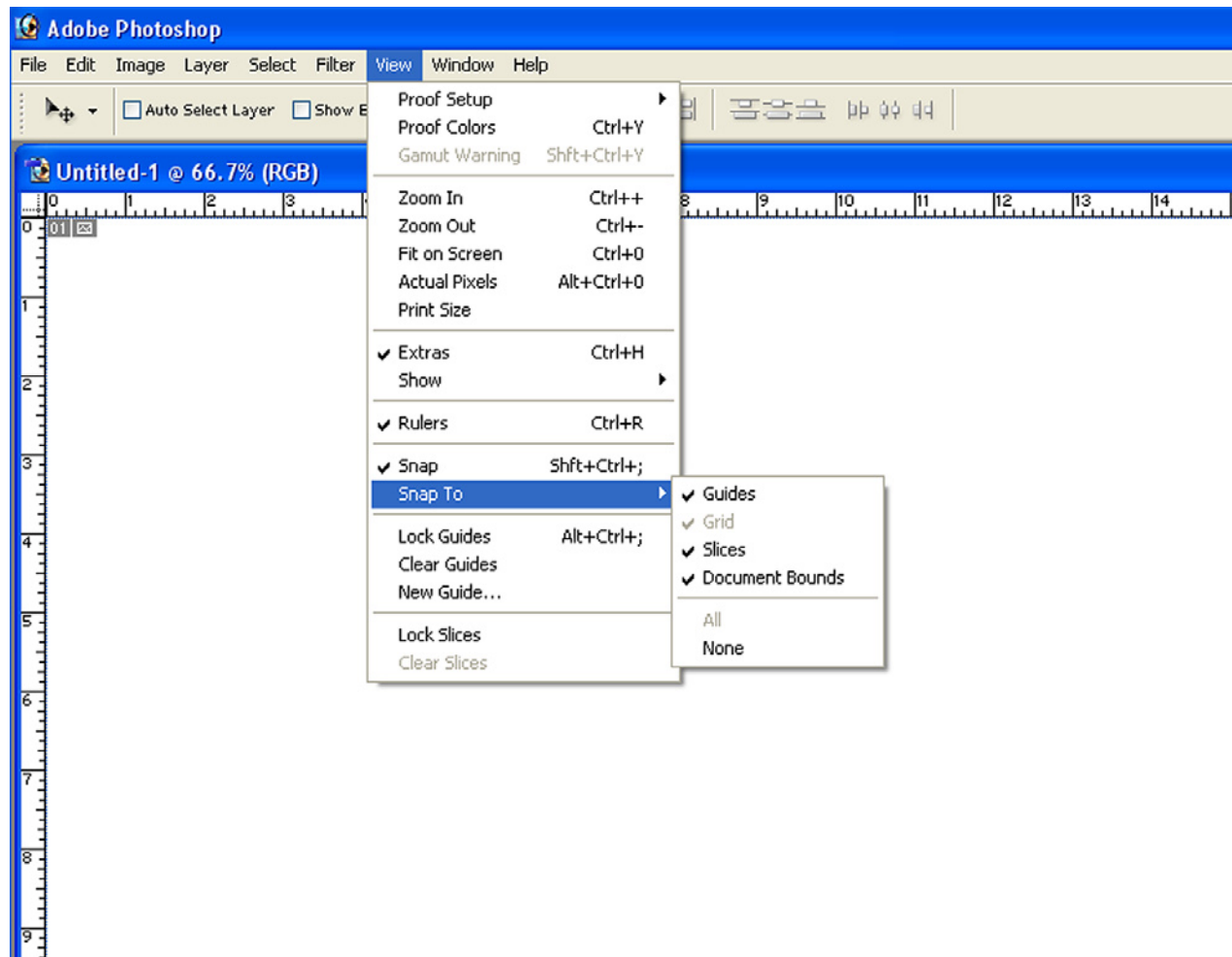
Layer manipulation

scale, rotate, distort a layer. This effects a selected layer only.



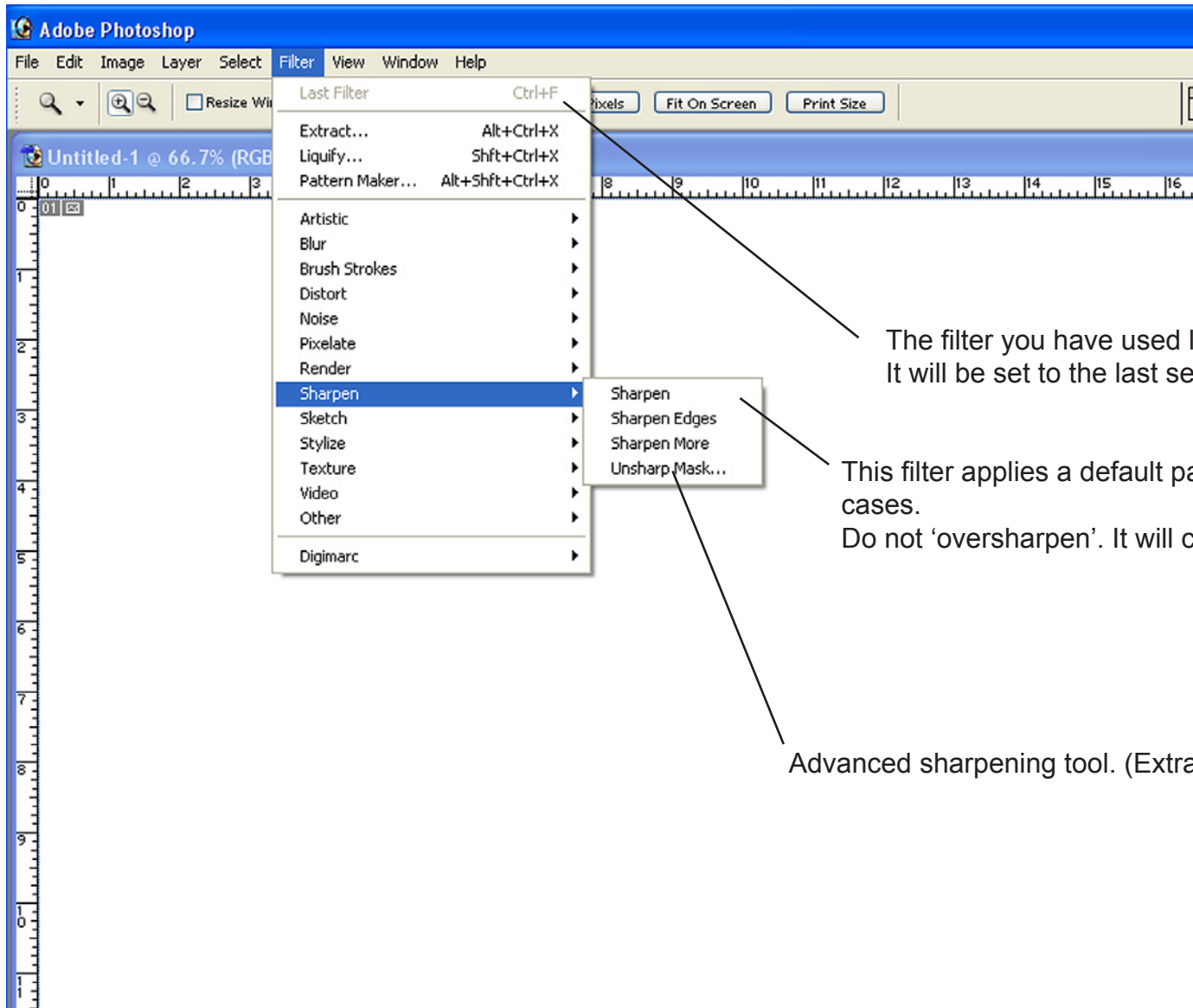
View

Select your view, snap features, rulers along the outside, grid and guides, etc.....



Filter

This section contains filters for sharpening, blurring, textures, effects, etc.....



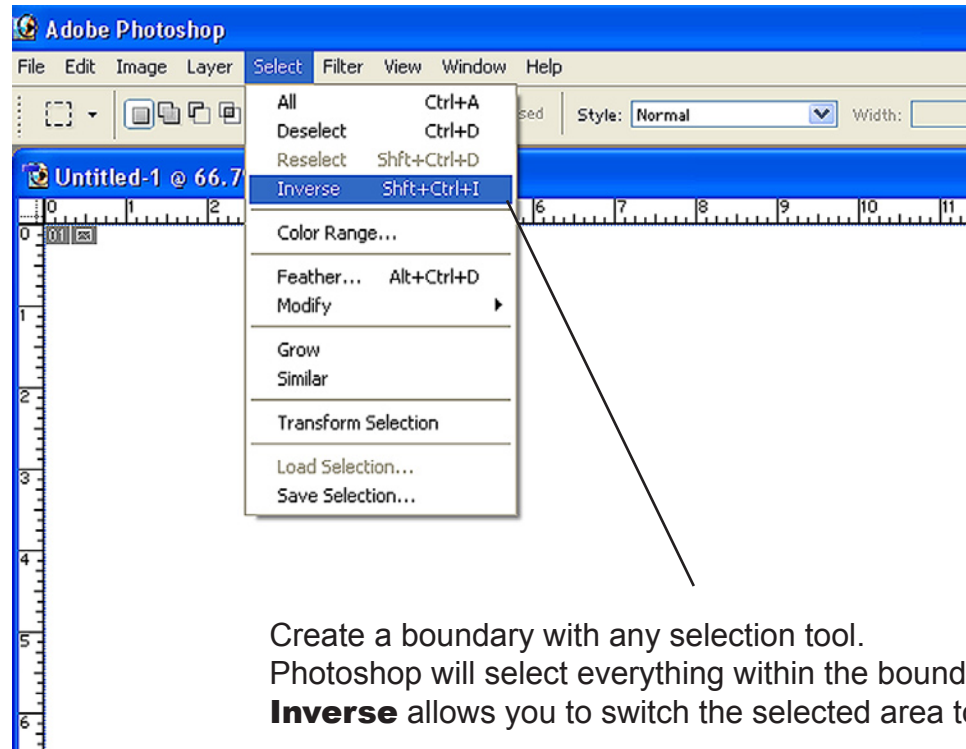
The filter you have used last will show up in this window. It will be set to the last settings.

This filter applies a default parameter that works in most cases. Do not 'oversharpen'. It will create grainy images.

Advanced sharpening tool. (Extra class)

Select

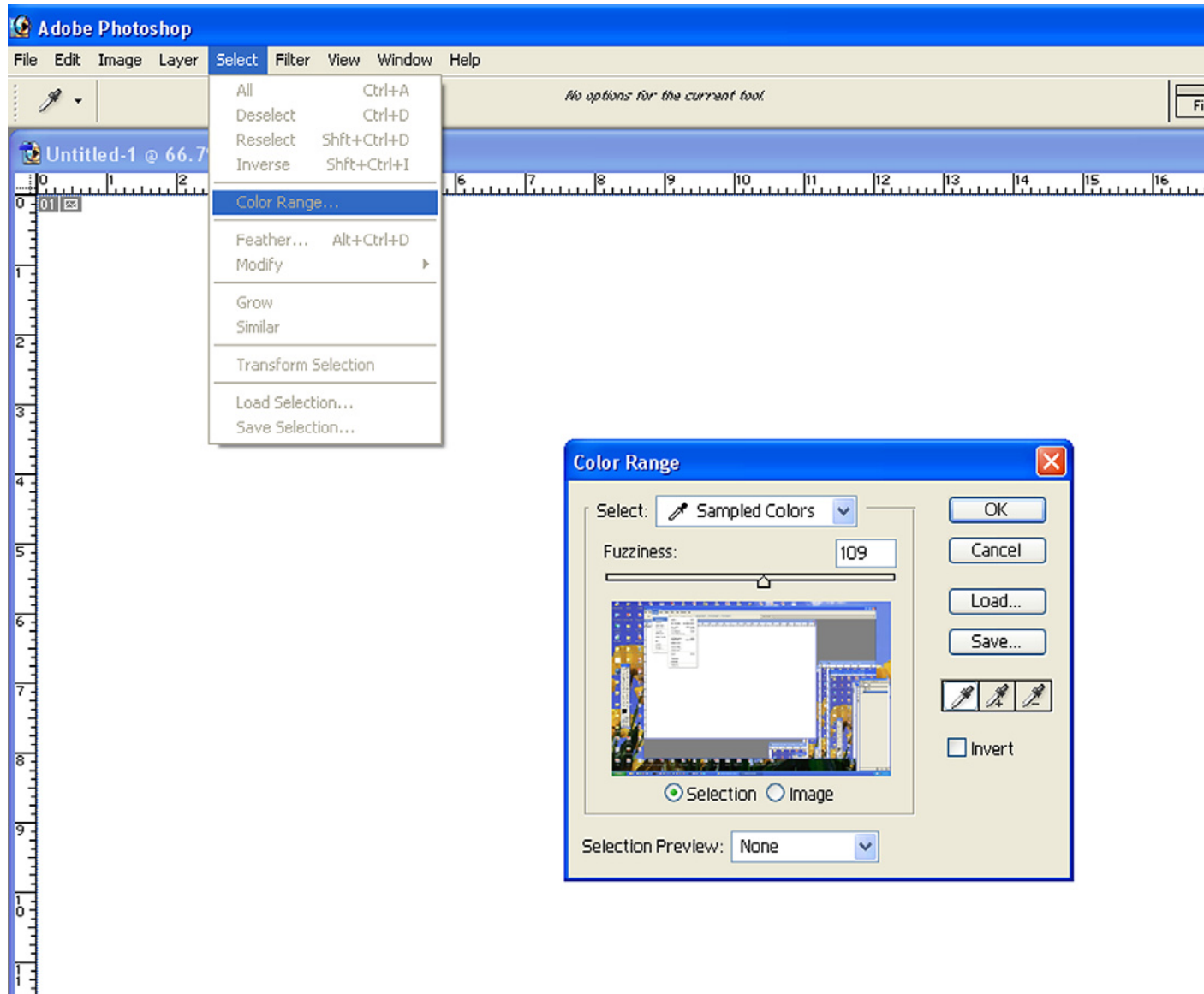
Different tools to select, modify and transform a selection.



Create a boundary with any selection tool.
Photoshop will select everything within the boundary.
Inverse allows you to switch the selected area to the outside of the boundary.

Color range

This tool selects all colors within a certain range. You can pick the base color with the Eyedropper tool.



Layer Styles

Create shadows, highlights, glows, etc

