

## Instructions for getting SolidWorks:

### Requirements:

1. Have a 32-bit Windows system. If you have 64 bit, give up. If you have a Mac, use BootCamp and install XP.
2. Be a MechE, or change your major to MechE... (this is a MechE resource, I don't know if you'll be able to install it if you're not a MechE)
3. Get on the campus network (you MUST be on an MIT network – dorms should also work – don't even bother trying if you're off campus). On a similar note, you'll need to be on a campus network to acquire a license whenever you want to use Solidworks.
4. Make sure you have whatever web certificates you need – you'll be asked for them.

### If you have Vista:

Before installing, do the following:

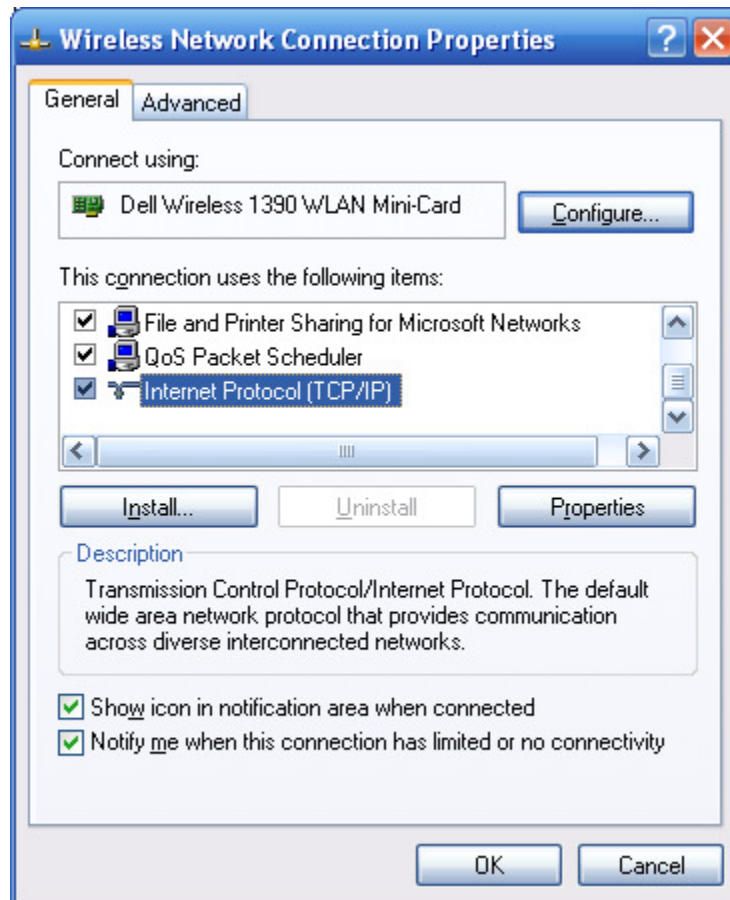
1. Go to **Control Panel >> User Accounts >> Turn User Account Control On or Off**
2. *Uncheck* "Use User Account Control (UAC) to help protect your computer"
3. Close all the windows you just opened
4. Reboot

### To download & install:

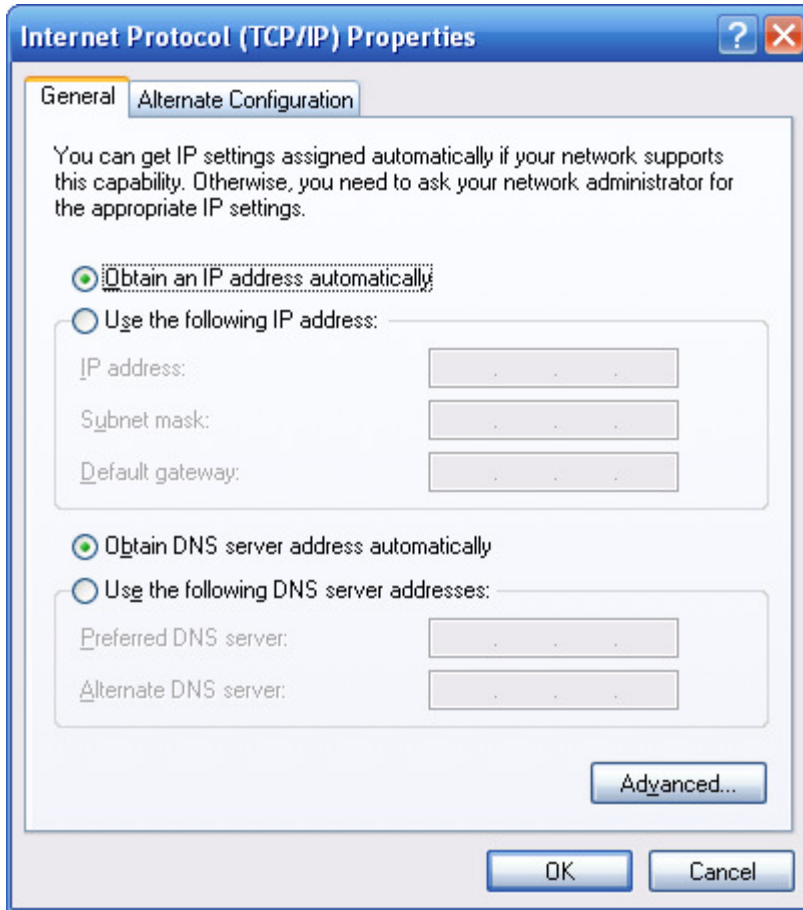
Go to <https://web.mit.edu/mecheng/computing/Software/SW2008-9/instructions.html> - this provides even MORE instructions for downloading – follow them and SolidWorks will install. FOLLOW EVERY SINGLE STEP EXACTLY AS WRITTEN. For more information on changing your DNS suffix in XP, see the next few pages.

An elaboration on changing your DNS suffix on Windows XP:

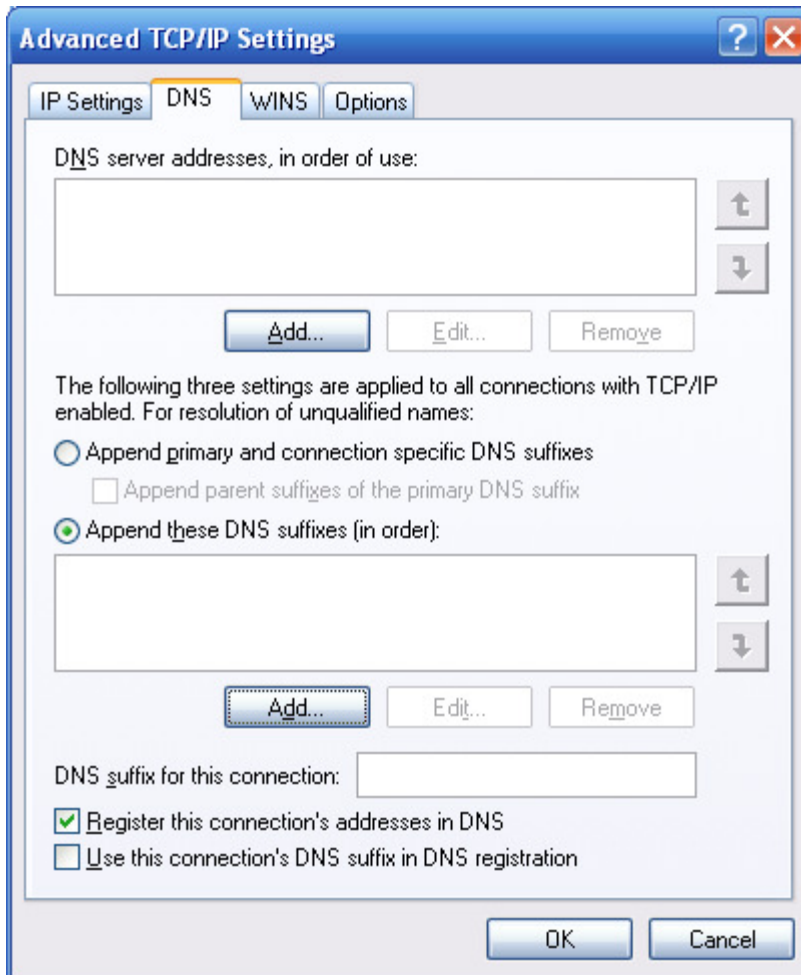
1. Go to **Control Panel >> Network Connections**
2. **Right click >> Properties** on whatever network connection you want to configure
3. Highlight **Internet Protocol (TCP/IP)** and click the **Properties** button



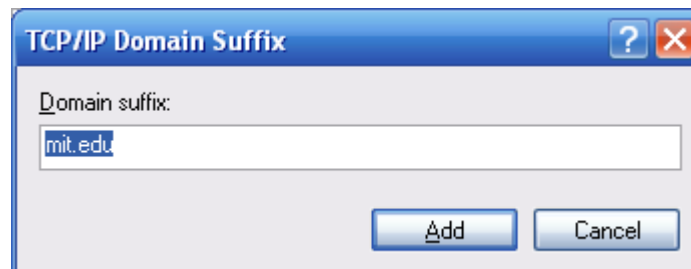
4. Click the **Advanced** button



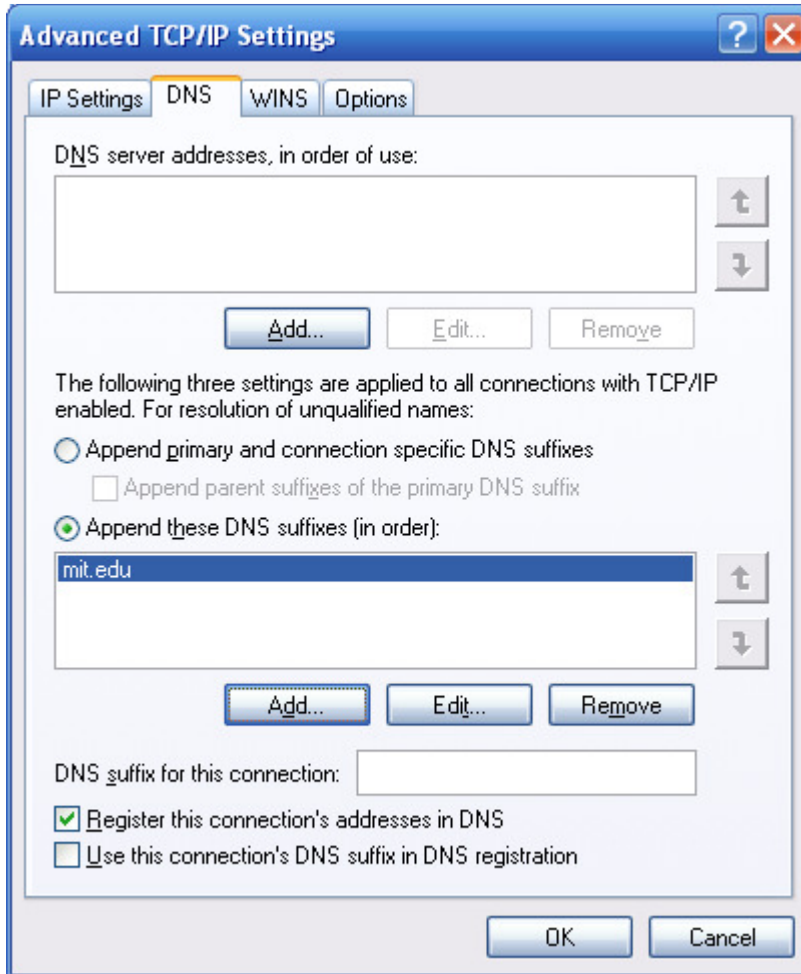
5. Click on the **DNS** tab, then click the lower **Add** button



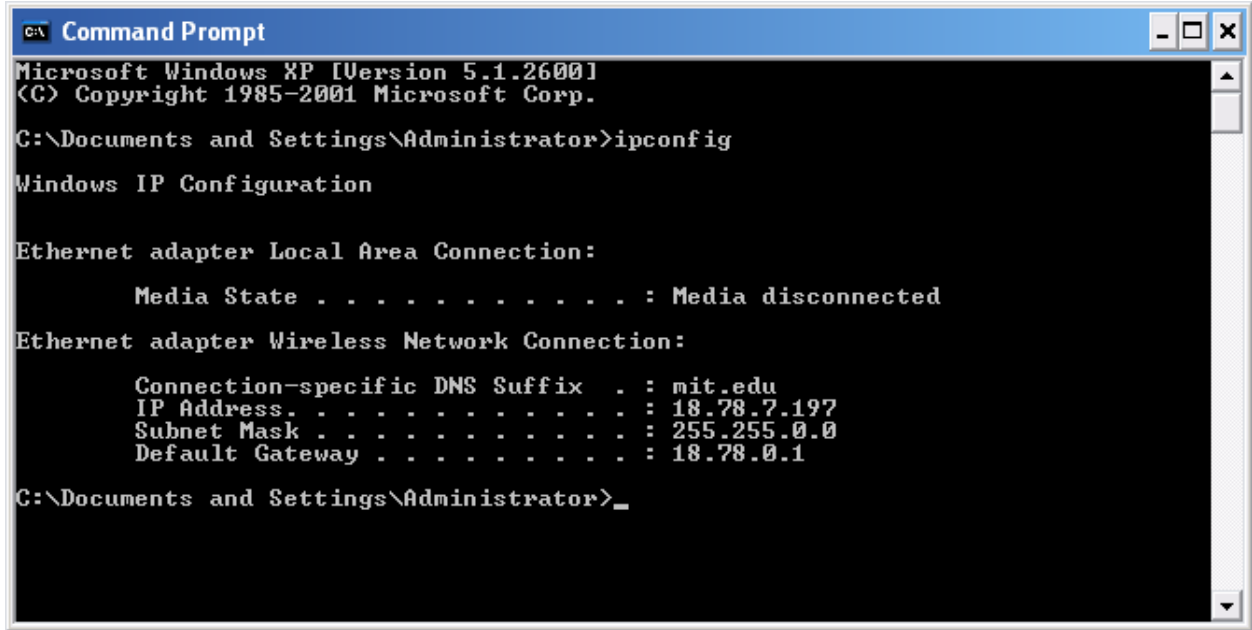
6. Enter *mit.edu* and click **Add**



7. Your screen should now have *mit.edu* on the list of DNS suffixes to append. Close all of the pesky windows that you have managed to open in steps 1-5.



8. To make sure these settings took effect:
  - a. Open a command prompt (**Start>>All Programs>>Accessories>>Command Prompt**)
  - b. Type in "ipconfig" and hit enter
  - c. **CHECK:**
    - i. Your IP Address should be 18.X.X.X
    - ii. Your *Connection-specific DNS Suffix* should be "mit.edu"



```
C:\> Command Prompt
Microsoft Windows XP [Version 5.1.2600]
(C) Copyright 1985-2001 Microsoft Corp.

C:\Documents and Settings\Administrator>ipconfig

Windows IP Configuration

Ethernet adapter Local Area Connection:

    Media State . . . . . : Media disconnected

Ethernet adapter Wireless Network Connection:

    Connection-specific DNS Suffix . : mit.edu
    IP Address. . . . . : 18.78.7.197
    Subnet Mask . . . . . : 255.255.0.0
    Default Gateway . . . . . : 18.78.0.1

C:\Documents and Settings\Administrator>_
```