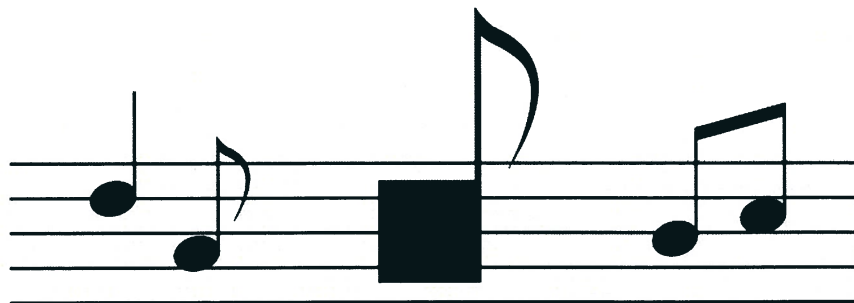




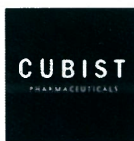
*Holiday  
Pops!*



Friday December 2  
8 pm **Cary Hall**



*Cubist Pharmaceuticals  
is Proud to Support  
the Lexington Symphony*



**The shape of cures to come.™**

2011-2012

17th Season



**JONATHAN MCPHEE**, *Music Director*

**Friday, December 2, 2011**

**8 pm - Cary Memorial Hall**

*Holiday Pops!*

**GEORGE MECHEM**, *narrator*

**LEXINGTON HS MADRIGALS  
LINCOLN-SUDBURY HS ACCENT A CAPPELLA  
MIT CONCERT CHOIR**

**Winter Wonderland** F Bernard  
**Nutcracker and the Mouse King** P Tchaikovsky, arr. J McPhee  
GEORGE MECHEM, *narrator*

**Lexington High School—Madrigals**  
*selections to be announced from stage*

**March of the Toys from Babes in Toyland** V Herbert  
**Oh Chanukah** Traditional, arr. S Gerber

**Lincoln-Sudbury High School—Accent A Cappella**  
*selections to be announced from stage*

**The Polar Express** A Sylvestri  
**Three Holiday Songs from Home Alone** J Williams  
**Hallelujah Chorus from The Messiah** G F Handel  
**A Christmas Festival Sing-along** (see program insert for words) J Finnegan

THIS ORGANIZATION IS  
FUNDED IN PART BY



## Orchestra Personnel

### VIOLIN I

Elizabeth Whitfield,  
*Concertmaster*  
Randy Hiller  
Barbara Oren  
Ana-Maria Lapointe  
Sonja Larson  
Patrick Shaughnessy  
Momoko Matsumura

### VIOLIN II

Rebecca Hawkins,  
*Principal*  
Shufang Du  
Adele Okhi  
Tomoko Iwamoto  
Cindy Fong  
Philip Maffa

### VIOLA

Lisa Kempeskie,  
*Principal*  
Claudia Stumpf  
Leslie Sonder  
Jan Lerbinger  
Ken Allen

### CELLO

Nathaniel Lathrop,  
*Principal*  
Russell Engler  
Susan Griffith  
Jane Sheena  
Lynn Nowels

### BASS

Ken Godel, *Principal*  
Deborah Jones  
Brian Thacker

### FLUTE

Danielle Boudrot,  
*Principal*  
Cindy Moore  
Stephanie Stathos

### PICCOLO

Stephanie Stathos

### OBOE

Audrey Markowitz,  
*Principal*  
Kyoko Hida-Battaglia

### ENGLISH HORN

Kyoko Hida-Battaglia

### CLARINET

Danielle Occhipinti,  
*Principal*  
Richard Carpenter

### SAXOPHONE/BASS

**CLARINET**  
Jeffrey Leonard

### BASSOON

Patti Yee, *Principal*  
Sally Merriman

### HORN

Anne Howarth,  
*Principal*  
Nancy Hudgins  
James Mosher  
Jeremy Ronkin

### TRUMPET

Richard Given,  
*Principal*  
Jonah Kappraff  
Samantha Glazier

### TROMBONE

Peter Charig,  
*Principal*  
Mary Tyler

### Bass TROMBONE

Chris Beaudry

### TUBA

Dwayne A Heard II

### TIMPANI

Valerie Smalley

### PERCUSSION

Yumiko Watanabe  
Michael Ambroszewski

### HARP

Barbara Poeschl-  
Edrich

### KEYBOARD

Paul Carlson

Lexington Symphony is online! Join our Facebook group or follow us on Twitter @LexSymphony.



LEXINGTON SYMPHONY IS A MEMBER OF



ARTSBOSTON

# BROOKHAVEN

## AT LEXINGTON

*Proud Sponsor of  
the Lexington Symphony*



1010 Waltham Street  
Lexington, MA 02421

*Lifecare living at its finest*

781-863-9660

Fax 781-863-9944

[www.brookhavenatlexington.org](http://www.brookhavenatlexington.org)



# EAGLE BANK

**Proudly supports the  
Lexington Symphony**

[www.bankeagle.com](http://www.bankeagle.com) | (781) 862-3790

171 Mass Ave. & 1768 Mass Ave.



Member FDIC / Member DIF

## Guest Artists

Lexington High School *Madrigals*

Mr. Jason Iannuzzi, *Choral Director*

### SOPRANO

Elaine Choi  
Rebecca Galin  
Sylvia Larson  
Rebecca Reibstein  
Libby Rosenfield

### ALTO (CONTD)

Ranya Virk  
Annika Voss  
Olivia Wendel

### BASS

Devon Kilburn  
Luke Johnson  
Regi Murphy  
Alex Sheena  
Noah Virgile

### TENOR

Brian Appelman  
Felix Cancre  
Charlie Coburn  
Daniel Maffa

### ALTO

Sophia Bernitz  
Isabel Evans  
Lauren Jackson

Lincoln-Sudbury High School *Accent A Cappella*

Kaitlin McPhee  
Rebecca Kline  
Grant Sorbo  
Dan Beckham  
Sean Brodeur

Adam Blake  
Jesse Bogdan  
Katie O'Brien  
Hannah Weiss  
Sam Termine

Sammi Reinstein  
Alex Globerson  
Kenter Davies  
Katie Baldwin

**YouvilleHouse**  **Youville Place**

**Assisted Living Residences**

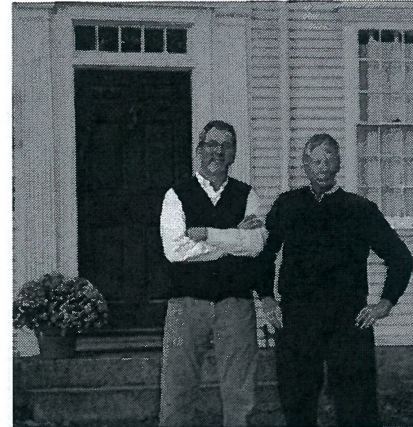
1573 Cambridge Street 10 Pelham Road  
Cambridge, MA 02138 Lexington, MA 02421  
617-491-1234 781-861-3535

[www.youvilleassistedliving.org](http://www.youvilleassistedliving.org)

*Assisted living with the emphasis on...living!*



*Local Roots  
Local Knowledge  
Professional Service*



Lester Savage & David Williams, Realtors

**WISHING YOU A HAPPY  
HOLIDAY SEASON!**

**781-862-7240**

**9 Meriam St.**

**Lexington, MA**

**LEXINGTONRE.COM**

**Proud Sponsor of  
the Lexington Symphony**

**Watertown  
Savings Bank**

Personal

Business

Community

1075 Waltham Street  
Lexington, MA 02421  
(617)-928-9000

[www.watertownsavings.com](http://www.watertownsavings.com)



## Guest Artists

### MIT Concert Choir

William Cutter, *Music Director*

#### SOPRANO

Angela Park  
Betsy Flowers  
Candice Kaplan  
Cassandra Swanberg\*\*  
Cathy Cao  
Elizabeth Attaway  
Fangdi Sun  
Hannah Alpert  
Jackie Chen  
Jennifer Fong  
Jingnan Lu  
Julia Berk  
Lauren Burke\*\*  
Lillian McKinley  
Marcela Rodriguez  
Mary Munro  
Nargiss Mouatta  
Noele Norris  
Sarah Don  
Tiandra Ray  
Yi-Hsin

#### ALTO

Alexandra Sailsman  
Amelia Brooks  
Carmela Lao  
Elizabeth Qian\*\*  
Erika Trent  
Katarina Popovic  
Kelly Snyder  
Manishika Agaskar  
Margaret Coad  
Marianne Gosciniak  
Megan Cherry  
Megan O'Donnell  
Shirleen Soh  
Solveig Skaland  
Victoria Enjamio  
Xin Qi Li  
  
**TENOR**  
Anthony Lu  
Benjamin Stein  
Brian Lee  
Chris Reyes  
Daesum Yim  
David B. Rush  
James Saunderson\*\*  
Justin Mazzola Paluska  
Meng Heng Touch  
Qiaochu Yuan  
Sabeel Saif Hakim  
Victor Morales

#### BASS

Ben Gunby  
Ben Sena  
Cappie Pomeroy  
Christian Bernt Haakonsen  
Christopher Michael  
Jones  
Eric Chan  
Felix Sun  
Ian Osborn  
Joseph Chism  
Jose Cabal-Ugaz  
Josh Hester\*\*  
Justin Brereton\*\*  
Luis Gil  
Luis Orrego  
Mike Walsh  
Thomas Alcorn  
Troy Welton

\*\*Section Leaders

# streamline

NO HASSLES. NO NONSENSE

*Travel, as peaceful as a symphony.*

*Streamline Air  
is proud to support  
the Lexington Symphony*

[www.iflystreamline.com](http://www.iflystreamline.com)

**MiniLuxe.**  
NAILS · WAXING · BEAUTY

MiniLuxe proudly supports the  
Lexington Symphony.

1718 Mass. Ave  
(Between Ride Studio &  
Lemon Grass Thai Cuisine)

*"One of the best pedicures I've  
had – hygiene is impeccable  
and the staff are polite and  
friendly. I'll be back!"*  
Jane, Lexington, MA

339-970-2322

[book.miniluxe.com](http://book.miniluxe.com)

Mention Lex Symphony @  
Checkout for 10% Off  
Your 1st Visit!

*"Love the MiniLuxe  
atmosphere and staff. I always  
leave relaxed and fabulous.  
My husband is hooked too!"*  
Susan, Lexington, MA

[www.miniluxe.com](http://www.miniluxe.com)



**JONATHAN MCPHEE**

Jonathan McPhee is equally at home as a conductor for the symphony, ballet, and opera. In addition to serving as Music Director for the Lexington Symphony, Mr. McPhee is Music Director for Boston Ballet, the Nashua (NH) Symphony, and the Longwood Symphony Orchestra.

Recent guest engagements include the Orquesta Sinfonica de Tenerife in Spain and the Lithuanian National Orchestra. Other orchestras Mr. McPhee has conducted are the BBC Scottish Symphony, Buffalo Philharmonic, the Louisiana Philharmonic, The Hague Philharmonic, Rochester Philharmonic, San Francisco Symphony, Orchestre Colonne (Paris), the National Philharmonic Orchestra in London, the Danish Radio Symphony Orchestra, and the Bergen Philharmonic in Norway.

Some of the world's most distinguished dance companies for which Mr. McPhee has served as conductor include the New York City Ballet, The Royal Ballet (England), Martha Graham Dance Company, National Ballet of Canada, The Australian Ballet, and American Ballet Theatre. In addition to a broad repertoire in the field of dance, Mr. McPhee has conducted pops concerts, musical theatre, and operetta. He has also conducted grand opera with Opera Boston, the American Opera Center in New York, and Boston University Opera.

Mr. McPhee has conducted many of the world's leading soloists as well as the generation of rising stars including cellist Yo-Yo Ma, flutist Paula Robison, pianists Max Levinson and Virginia Eskin, violinists Stephanie Chase, Augustin Hadelich, and Stefan Jackiw, as well as singers Robert Honeysucker and Harolyn Blackwell.

Mr. McPhee's works as arranger and composer are in the repertoires of orchestras and ballet companies around the world. His edition of Stravinsky's *Rite of Spring* is the only authorized reduced orchestration of this work. Mr. McPhee's compositions and arrangements are published by Boosey & Hawkes, Inc. Recent original works include *Nightingale*, *Images for Orchestra*, and a revised arrangement of Aaron Copland's ballet *Rodeo*, commissioned by the Copland Trust and Boosey & Hawkes, as well as a new edition of Stravinsky's complete *Firebird* for Boosey & Hawkes, recently performed by the Philadelphia Orchestra and Baltimore Symphony.

Mr. McPhee's best-selling recording of *The Nutcracker* with the Boston Ballet Orchestra has sold over 70,000 copies. He has also recorded Tchaikovsky's *Sleeping Beauty* and Prokofiev's *Romeo & Juliet* with that orchestra. Mr. McPhee recorded Samuel Barber's *Cave of the Heart*, Gian Carlo Menotti's *Errand into the Maze*, Edgard Varese's *Integrales*, *Offrandes*, and *Octandre* with the Danish Radio Symphony Orchestra for the films of Martha Graham's works telecast by DANCE IN AMERICA, as well as Michael Gandolfi's *Caution to the Wind* on the CRI label. His collaboration with WCRB classical radio "Kids Classical Hour" earned a Gabriel Award in 1998. He also conducted the sound track for the recent feature film entitled *BALLET RUSSE* with the Louisiana Philharmonic.

Born in Philadelphia, Mr. McPhee received his L.R.A.M. from the Royal Academy of Music, and a B.M. and M.M. from The Juilliard School. While at Juilliard, Mr. McPhee was the recipient of a Naumburg Scholarship in Conducting and English Horn. He has studied with Leonard Brain, David Diamond, Thomas Stacy, Rudolf Kempe, Sixten Ehrling, and participated in master classes with Sir Georg Solti and James Levine at Juilliard.

**GEORGE MECHEM**

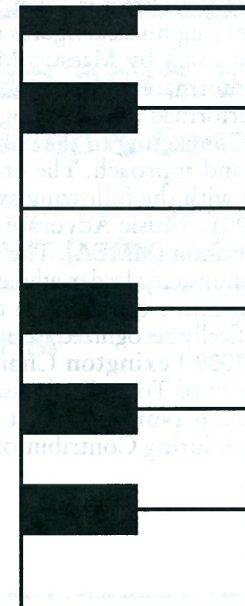
George Mechem has been a Lexington resident for 25 years. He spent his entire professional career at Lexington High School, beginning in 1969 as an English teacher. In 1994 he went into administration, serving as a housemaster until 1999, and as associate principal until his retirement in 2007.

Mr. Mechem has a varied theatrical and performance history. Over the years he has done poetry readings, emceed, and given graduation speeches. He has worked at all levels in local summer theatre productions, and has performed *Cassey at the Bat* twice with the Lexington High Pops orchestra (2004, 2007). For the past 25 years, he has served as the host and narrator of the Annisquam Sea Fair WaxWorks, a production founded by Cape Ann artist Margaret Fitzhugh Browne that dates back to 1947.

**LEXINGTON  
MUSIC  
SCHOOL**

**Epp Sonin, Director**  
**781-863-8484**

Piano • Piano Classes • Theory  
Voice • Violin • Viola • Cello  
Chamber Music • Pre-School Music  
Jazz • Guitar • Saxophone



## About the Lexington Symphony

### WHO WE ARE

The Lexington Symphony is a group of dedicated professional musicians who share a passion for their music and for exacting standards of performance.

In its 17th season, the orchestra maintains a unique blend of grass-roots spirit and professionalism, devoted to sharing classical music with all. With an emphasis on accessibility, the group offers great programming, superb performances, easy parking and affordable tickets, with outreach programs that introduce kids of all ages to classical music.

### OUR MISSION AND HISTORY

Founded in 1995 by conductor Hisao Watanabe and a group of musicians and supporters, the Lexington Symphony maintains a community spirit while producing high-quality performances that attract an ever-growing audience from Lexington and surrounds. The orchestra regularly fills 800-seat Cary Hall and now presents six concerts each year led by conductor Jonathan McPhee.

Passionate about educating the next generation about classical music, the group presents a biennial workshop and concert for children and a yearly educational program for elementary aged kids, *Orchestrating Kids Through Classics™*, both of which have received accolades from parents, kids and teachers alike. Working to make classical music accessible to all, the Lexington Symphony performs outreach programs that serve all ages, offers tickets at affordable prices, and presents exciting concert experiences that audiences love. Orchestra members work with community members in all aspects of the organization, and it is this energetic collaboration between musicians, community and conductor that makes the Lexington Symphony a thriving, special group.

Music Director Jonathan McPhee joined the orchestra in 2005 and is one of the leading musical figures in New England. Each Saturday night concert is preceded by a talk by Maestro McPhee that combines musical examples with biographical information to enhance the listening experience, looking behind the pieces to be performed and retracing the composers' thoughts.

Connecting to the community is at the heart of Lexington Symphony's mission and approach. The orchestra has been recognized for its community connections with the following awards:

**2010 Music Advocate Award**, presented by the Massachusetts Music Educators Association (MMEA). This prestigious award is given to an individual, organization, or community leader who exemplifies the MMEA mission of demonstrating advocacy for music education in the schools of Massachusetts. Lexington Symphony was specifically recognized for its work with elementary schools in Lawrence.

**2009 Lexington Chamber of Commerce Award** for "Best New Initiative in Support of Town Businesses" (Holiday Pops).

**2006 Nonprofit Net Award** for "Forward-Looking Vision and Exemplary and Enduring Contribution to Our Community."



P.O. Box 194

Lexington, MA 02420  
[www.lexingtonsymphony.org](http://www.lexingtonsymphony.org)

781-523-9009



## UPCOMING CONCERTS

**SATURDAY, FEBRUARY 4, 2012, 8PM**

**William Kirkley, clarinet**

Nielsen *The Artists' Bier*  
Respighi *Trittico Botticelliano*  
Nielsen *Clarinet Concerto*  
Haydn *Symphony No. 43 "Mercury"*



**SATURDAY, MARCH 24, 2012, 8PM**

**David Deveau, piano**



Beethoven *Piano Concerto No. 5 "Emperor"*  
Dvořák *Symphony No. 7*

**SUNDAY, MARCH 25, 2012, 2PM**

**Kids' Workshop & Concert**

Kids can try out the instruments of the orchestra and conduct their own group of players! Music by Nielsen, Dvořák, and more.

**SATURDAY, JUNE 2, 2012, 7PM**

**"Concert in the Round"**

Gounod *Petite Symphony*  
Bach *"Brandenburg" Concerto No.3*  
Bartók *Romanian Folk Dances*

Tickets on sale now

[www.lexingtonsymphony.org](http://www.lexingtonsymphony.org)

781-523-9009

Individual gifts are critical to sustaining Lexington Symphony as an essential part of the cultural growth and engagement of our community and surrounds. Your gift supports all our work, including concerts, programs for youth, and community outreach. Make a difference by helping us bridge the gap between ticket income and our total costs.

**LEXINGTON SYMPHONY**  
JONATHAN MCPHREE • MUSIC DIRECTOR

Return this completed form (+check) to Lexington Symphony:

PO Box 194  
 Lexington, MA  
 02420-0002

**BECOME A SUPPORTING MEMBER TODAY**

**YES**, I want to become a Supporting Member of the Lexington Symphony, helping it to keep ticket prices low, and to bring great music to diverse audiences of children and youth, adults and seniors. All members receive regular e-newsletters keeping them apprised of concerts and other events.

**Membership Donation Levels**

- Individual** (\$100)
- Family** (\$250)
- Donor** (\$500)
- Patron** (\$1000) members receive advance notice of all concerts, with options for preferred seating.
- Benefactor** (\$1500) members receive all Patron benefits *plus* invitations to special receptions with the conductor and members of the orchestra.
- Leadership** (\$2500) members receive all Benefactor benefits *plus* invitations to attend dress rehearsals of the orchestra.
- Contributor** (your gift of \_\_\_\_\_ is most appreciated)

If your employer has a corporate matching gift program, please mail the necessary forms to PO Box 194, Lexington MA 02420. The Lexington Symphony holds non-profit status under Sec. 501c(3) of the IRS Code. Your gift is tax-deductible to the extent provided by law. Please call 781-523-9009 with any questions.

- Enclosed is my check payable to the Lexington Symphony**
- Please charge my Credit Card:**

Credit card # \_\_\_\_\_  
 Expiration \_\_\_\_/\_\_\_\_ Sec. code \_\_\_\_\_  
 Name on card \_\_\_\_\_  
 Signature \_\_\_\_\_  
 Name (that you wish to be recognized in our program): \_\_\_\_\_

Billing Street Address \_\_\_\_\_  
 City \_\_\_\_\_ State \_\_\_\_\_  
 ZIP \_\_\_\_\_ Telephone \_\_\_\_\_  
 e-mail \_\_\_\_\_

- I would like to volunteer. Please contact me.
- I would like to receive concert notices by  email  post
- I wish to learn more about:
  - Sponsoring a Player (\$250 per concert; \$1000 entire season)
  - Becoming a Concert Fund Partner (\$1000 donation)
  - Building the Symphony's endowment through the Lexington Symphony Public Trusts Centennial Endowment Fund
  - Participating in Planned Giving

*Angels Heard on High!*



**DISCOVER EVERYTHING YOU NEED TO CREATE HOLIDAY MAGIC IN YOUR HOME.**

**FRESH AND ARTIFICIAL TREES AND GREENS, UNIQUE ORNAMENTS, LIGHTS AND UNFORGETTABLE GIFTS.**

Amazing Balsam Christmas Trees  
**6-8 FEET \$22.88**  
 And many other varieties!

*Christmas City at*

**SEASONS  FOUR**

1265 MASSACHUSETTS AVE.  
 LEXINGTON, MA 02420  
 TEL: 781.861.1200  
 WWW.SEASONSFOUR.COM

OPEN 7 DAYS, 9-5  
 EXTENDED HOURS:  
 WEDNESDAY-FRIDAY UNTIL 8



# SWING IN THE NEW YEAR!

WITH THE LEXINGTON SYMPHONY

December 31, 2011

8:30 pm Cary Hall

Tickets: \$125/\$75



JOIN US FOR AN EVENING OF DANCE AND  
BIG BAND SWING FEATURING A TRIBUTE  
TO THE GREAT GLENN MILLER  
WITH VOCALIST, BRADFORD GLEIM

**Ask a Symphony Board  
Member to Dance Tonight!**

call 781.523.9009 or  
visit [www.lexingtonsymphony.org](http://www.lexingtonsymphony.org)

2011-2012

17th Season



JONATHAN MCPHEE, *Music Director*

Friday, December 2, 2011

8 pm - Cary Memorial Hall

---

# *Holiday Pops!*

## PROGRAM SUPPLEMENT

Lexington High School

*Madrigals*

- |                            |                        |
|----------------------------|------------------------|
| The Christmas Song         | arr R Page             |
| I'll Be Home for Christmas | arr M Huff             |
| Deck the Hall              | arr The King's Singers |

Lincoln-Sudbury High School

*Accent A Cappella*

- |                               |  |
|-------------------------------|--|
| O Come, O Come Emanuel        | arr A Parker & R Shaw                    |
| Ille Finu                     | Traditional                              |
| Silent Night                  | J Mohr & F Gruber, arr A Parker & R Shaw |
| Jingle Bell Rock              | J Beal & J Boothe, arr M Weir            |
| We Wish You a Merry Christmas | Traditional English                      |

*The Polar Express* and *Home Alone* will feature the MIT Concert Choir.

The *Hallelujah Chorus* will feature all three guest choral ensembles.

Audience members are invited to sing along with *A Christmas Festival* and the *Hallelujah Chorus*. Words can be found in this program supplement.

**Special thanks** to our three guest choral ensembles this evening! Please visit the websites below to learn more about these talented singers!

For more information on the **Lexington High School Madrigals**, please visit <https://sites.google.com/site/lhschoral>.

For more information on **Accent A Cappella**, please visit <http://accentacappella.com>.

For more information on the **MIT Concert Choir**, please visit [web.mit.edu/music/performance/vocal](http://web.mit.edu/music/performance/vocal).

### **Additional singers from MIT include:**

Divya Pillai  
Caitlin Kerr  
Samantha Fomon  
Lawson Wong

Christy Swartz  
Allison Hamilos  
Tina Tallon  
David Rolnick

# A CHRISTMAS FESTIVAL

## *sing-along texts*

### **Joy to the World**

Joy to the World, the Lord  
has come:  
Let earth receive her King.  
Let ev'ry heart prepare Him room,  
And heav'n and nature sing,  
And heav'n and nature sing,  
And heav'n, and heav'n, and  
nature sing.

### **It Came Upon the Midnight Clear**

It came upon the midnight clear  
That glorious song of old,  
From angels bending near the earth  
To touch their harps of gold.  
"Peace on the earth, goodwill to men,  
From heav'n's all-gracious King."  
The world in solemn stillness lay  
To hear the angels sing.

### **Hark! The Herald Angels Sing**

Hark! The herald angels sing  
Glory to the newborn King!  
Peace on earth and mercy mild,  
God and sinners reconciled!  
Joyful, all ye nations rise,  
Join the triumph of the skies;  
With th' angelic host proclaim  
"Christ is born in Bethlehem!"  
Hark! The herald angels sing,  
Glory to the new—born King.

### **Silent Night**

Silent night, holy night!  
All is calm, all is bright,  
Round yon Virgin Mother and Child.  
Holy infant so tender and mild,  
Sleep in heavenly peace,  
Sleep in heavenly peace.

### **Deck the Hall**

Deck the hall with boughs of holly,  
Fa la la la la la la la.  
'Tis the season to be jolly,  
Fa la la la la la la la.  
Don we now our gay apparel,  
Fa la la la la la la la,  
Toll the ancient Yuletide carol,  
Fa la la la la la la la.

### **O Come All Ye Faithful**

O come, all ye faithful,  
Joyful and triumphant,  
O come ye, O come ye to Bethlehem;  
Come and behold him,  
Born the King of angels;  
O come, let us adore him,  
O come, let us adore him,  
O Come, let us adore him,  
Christ the Lord.

# HALLELUJAH CHORUS

Hallelujah! Hallelujah! Hallelujah!  
Hallelujah! Hallelujah!  
For the Lord God Omnipotent reigneth.  
Hallelujah! Hallelujah! Hallelujah! Hallelujah!

For the Lord God omnipotent reigneth.  
Hallelujah! Hallelujah! Hallelujah! Hallelujah!  
Hallelujah! Hallelujah! Hallelujah!

The kingdom of this world  
Is become the kingdom of our Lord,  
And of His Christ, and of His Christ;  
And He shall reign for ever and ever,  
For ever and ever, forever and ever,

King of kings, and Lord of lords,  
King of kings, and Lord of lords,  
And Lord of lords,  
And He shall reign,  
And He shall reign forever and ever,  
King of kings, forever and ever,  
And Lord of lords,  
Hallelujah! Hallelujah!

And He shall reign forever and ever,  
King of kings! and Lord of lords!  
And He shall reign forever and ever,  
King of kings! and Lord of lords!  
Hallelujah! Hallelujah! Hallelujah! Hallelujah!  
Hallelujah!