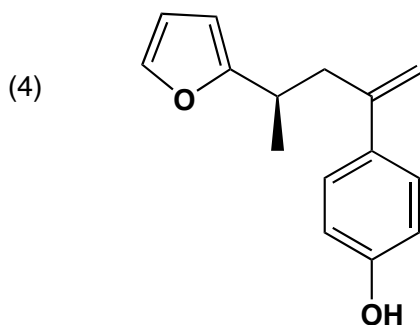
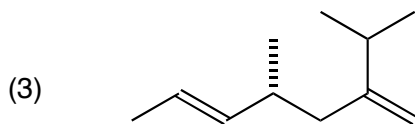
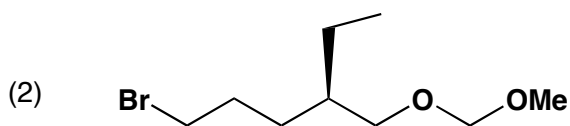
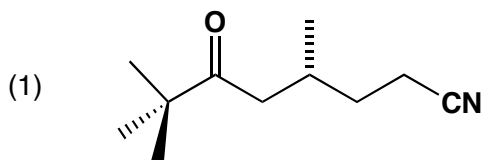


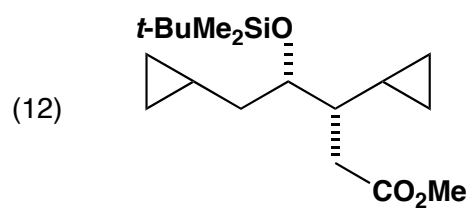
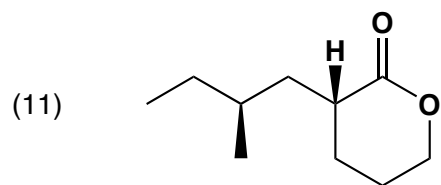
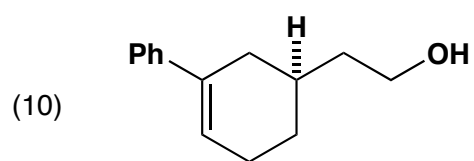
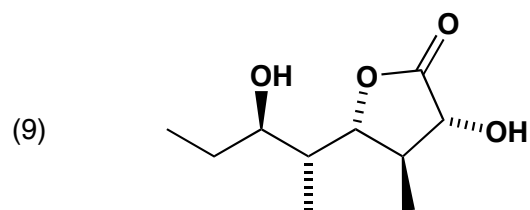
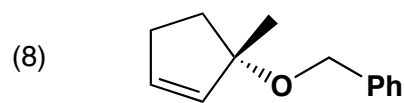
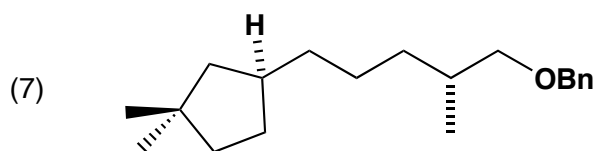
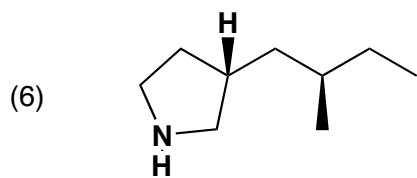
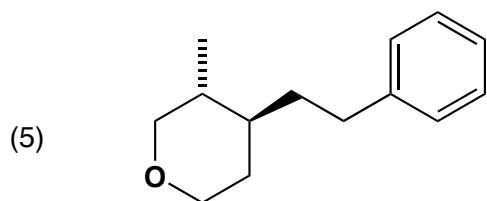
Massachusetts Institute of Technology  
Organic Chemistry 5.512

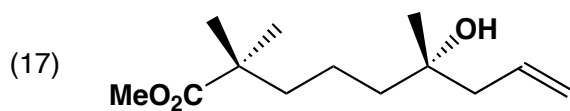
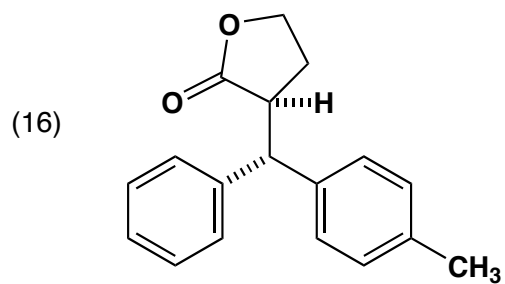
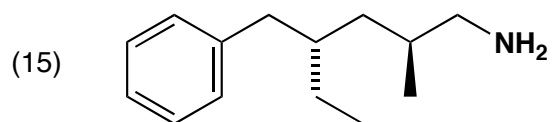
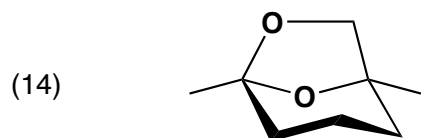
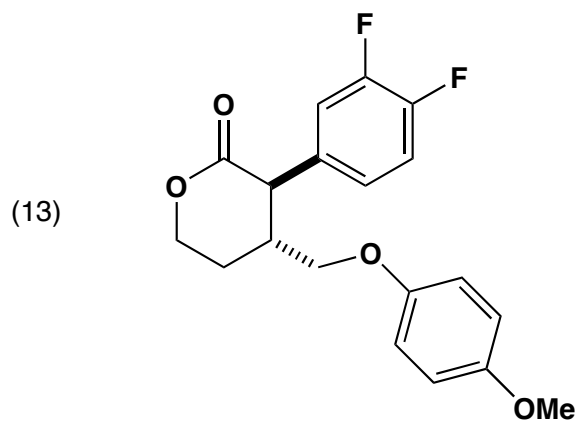
April 7, 2006  
Prof. Rick L. Danheiser

Problem Set 5  
Practice Problems for First Exam

Design a highly stereoselective synthesis of the following target molecules beginning with commercially available materials. Be sure to explicitly identify all reagents necessary for each transformation. Enantiomerically enriched reagents may be used if they are commercially available; however, each stereogenic center in the target molecule must be generated in your synthetic route. In other words, the stereogenic carbons in the chiral reagents you employ cannot be directly incorporated in the final product.








---

*The next 8 problems are from previous year's exams. Save these for last! We will discuss several of these in class on Monday April 10.*

