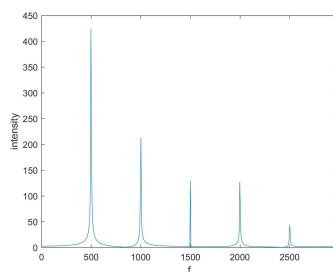


### Computing Intonation

- Searches for peaks from 0 cents upwards
- Takes weighted average in logarithmic cent space of peak to find center between frequency bins.
- Inputting magnitude squared yields better results?



### Timeline

- Week of the 12<sup>th</sup>: Recorder up to FFT
- Week of the 19<sup>th</sup>: Peak Detection and Cent calculator
- Week of the 26<sup>th</sup>: Visualization and troubleshooting
- Week of the 3<sup>rd</sup>: Troubleshooting and expansion