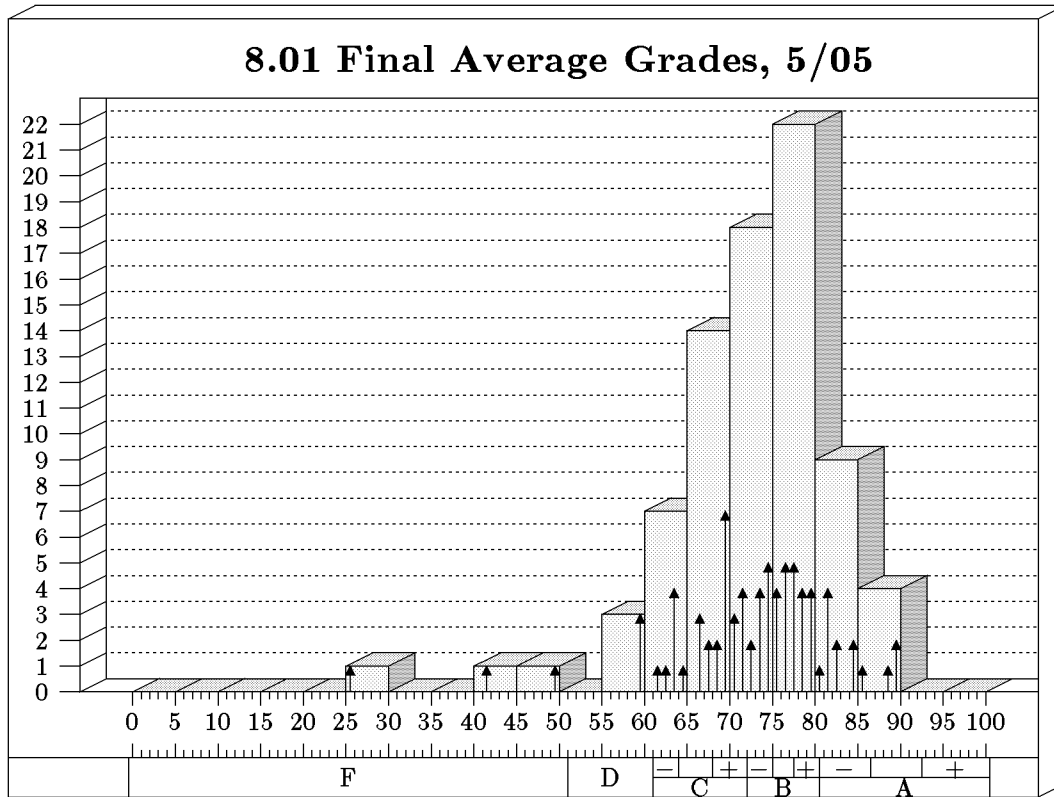


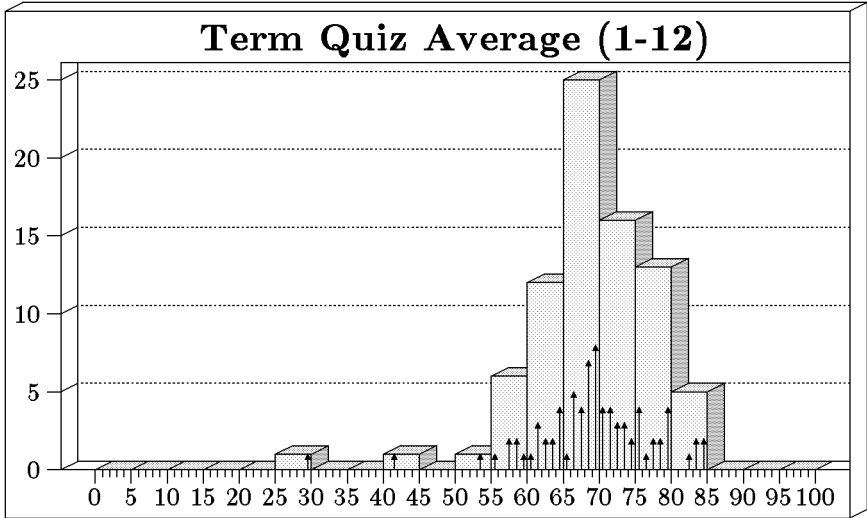
FINAL GRADE HISTOGRAMS
May 29, 2005



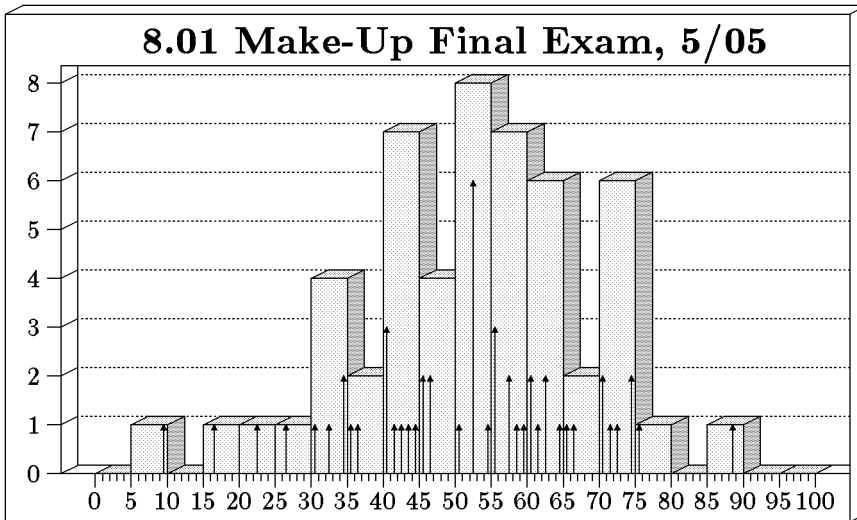
Students: 80 Mean: 72.5 Median: 74.0 Standard Deviation: 9.7
Bars show bins of 5, arrows show bins of 1.

Grade Distribution:

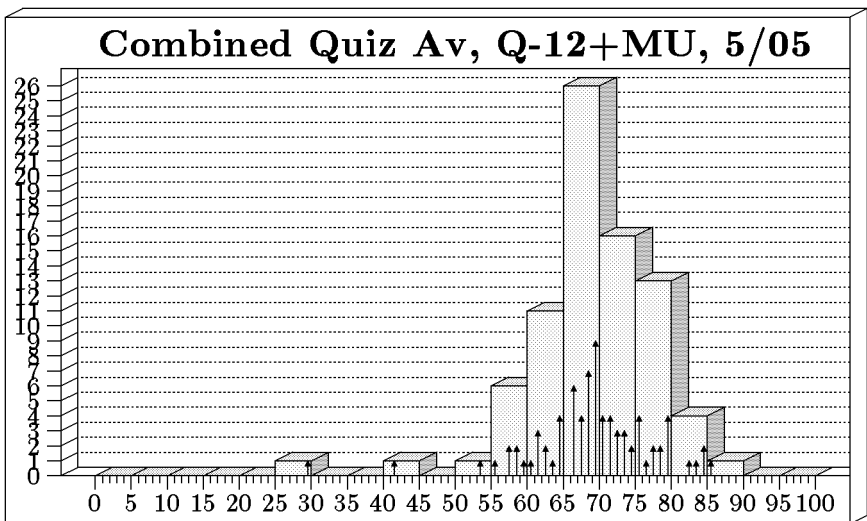
Grade	Range	Number	Percent	Number	Percent
A	80.5-100	16	20		
A+	92.5-100			0	0
A	86.5-92.4			3	3.8
A-	80.5-86.4			13	16.3
B	72-80.4	34	42.5		
B+	77.5-80.4			6	7.5
B	75-77.4			14	17.5
B-	72-74.9			14	17.5
C	61-71.9	25	31.3		
C+	68-71.9			12	15
C	64-67.9			6	7.5
C-	61-63.9			7	8.8
D	51-60.9	0	0		
F	0-50.9	2	2.5		
O		3	3.8		



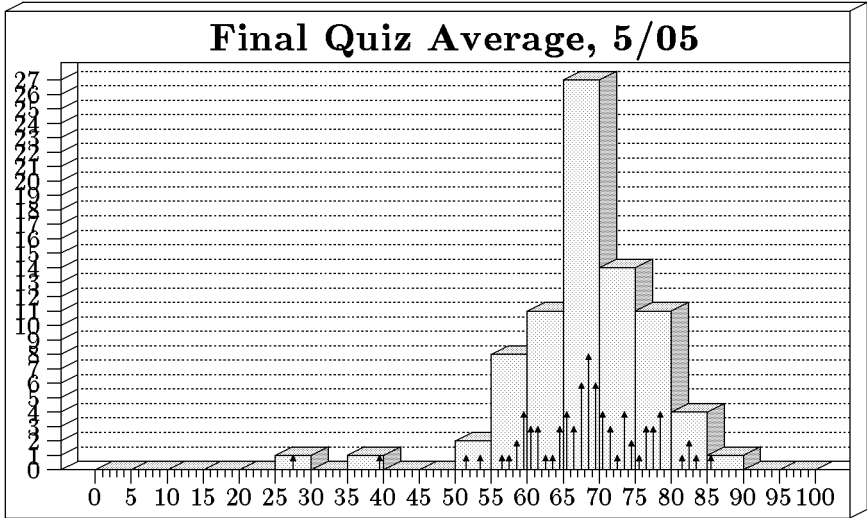
Mean: 68.8
 Median: 69.3
 Maximum: 100
 Standard Deviation: 8.7



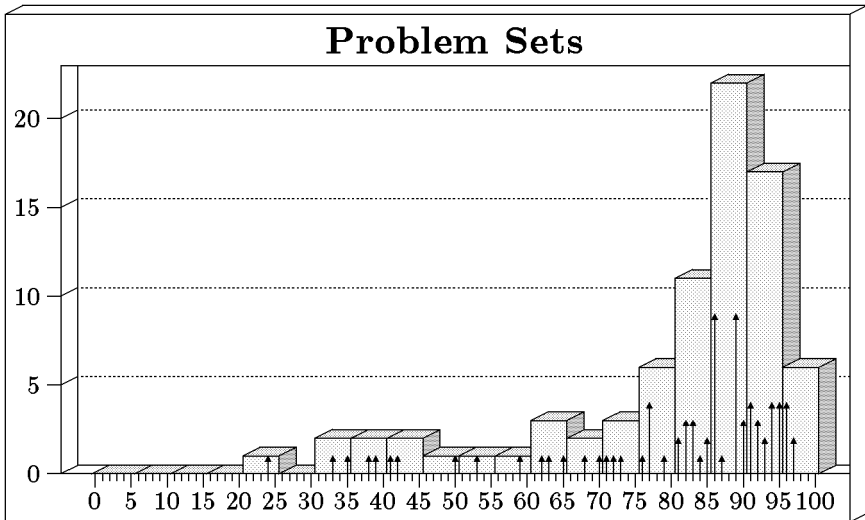
Number: 53
 Mean: 50.6
 Median: 52.5
 Maximum: 100
 Standard Deviation: 16.2



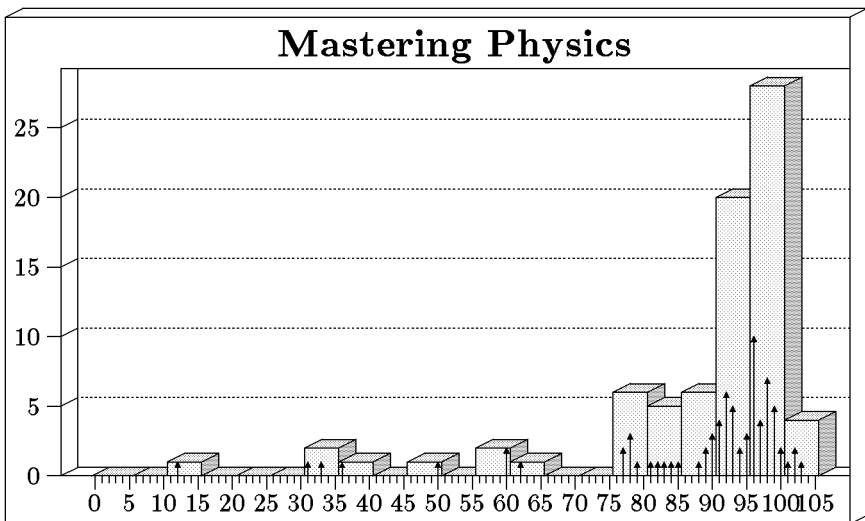
Mean: 68.9
 Median: 69.3
 Maximum: 100
 Standard Deviation: 8.7



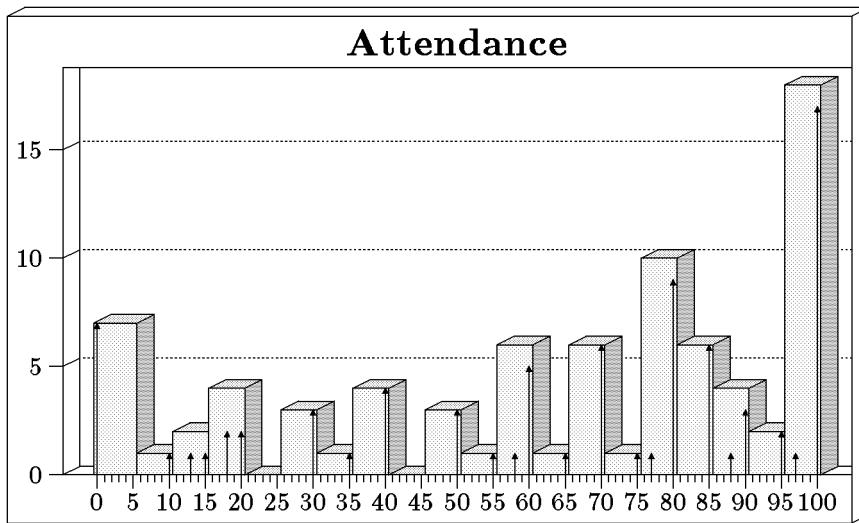
Mean: 68.0
 Median: 68.6
 Maximum: 100
 Standard Deviation: 9.0



Mean: 79.8
 Median: 85.8
 Maximum: 100
 Standard Deviation: 17.1



Mean: 87.6
 Median: 93.0
 Maximum: 100
 Standard Deviation: 17.3



Mean: 64.7
 Median: 76.0
 Maximum: 100
 Standard Deviation: 32.6