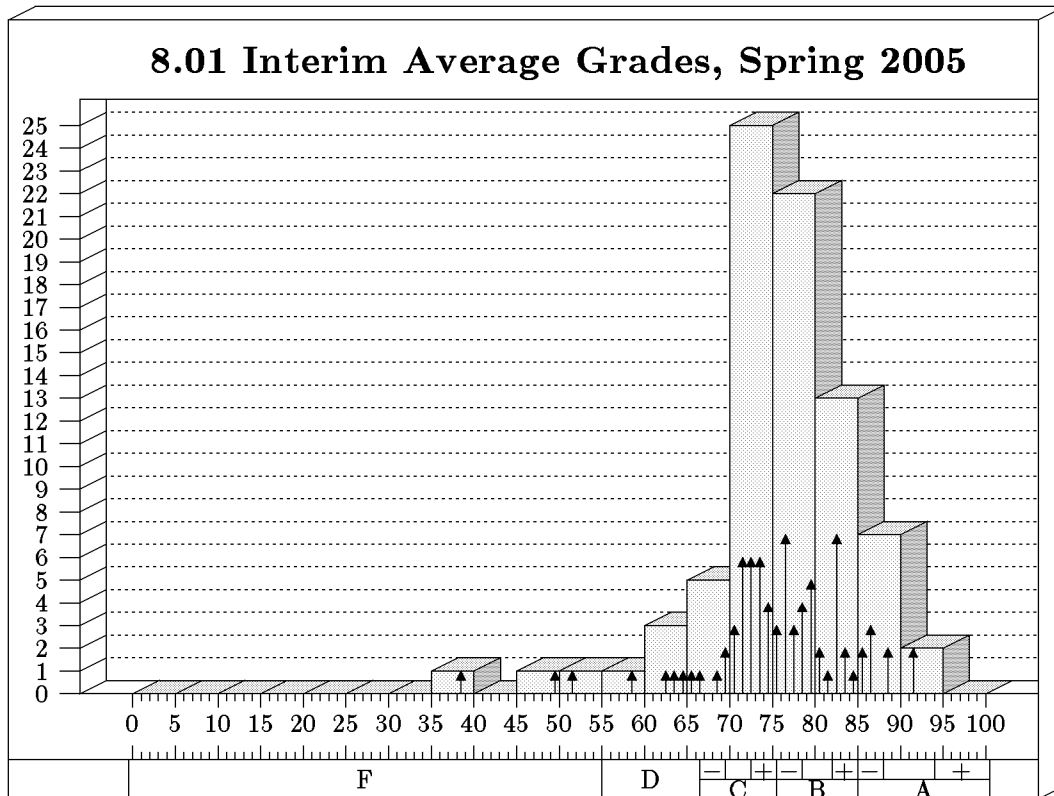


INTERIM GRADE HISTOGRAMS

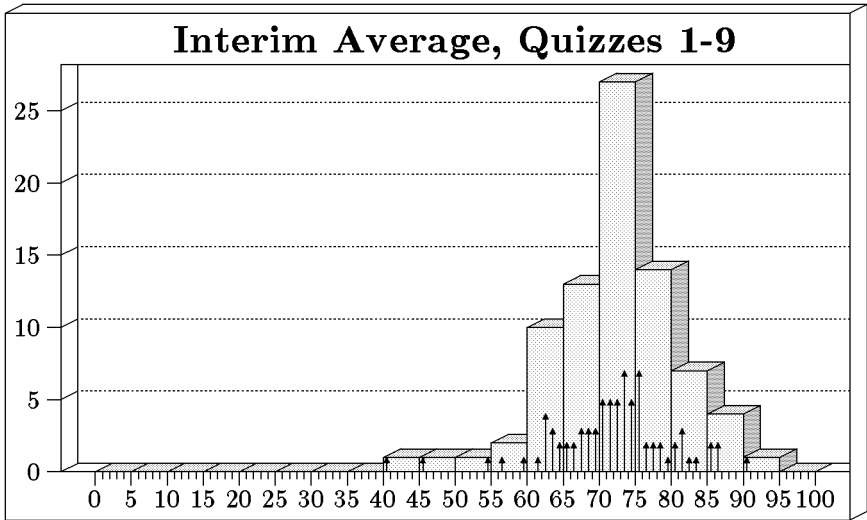


Students: 81 Mean: 75.4 Median: 76.0 Standard Deviation: 8.7

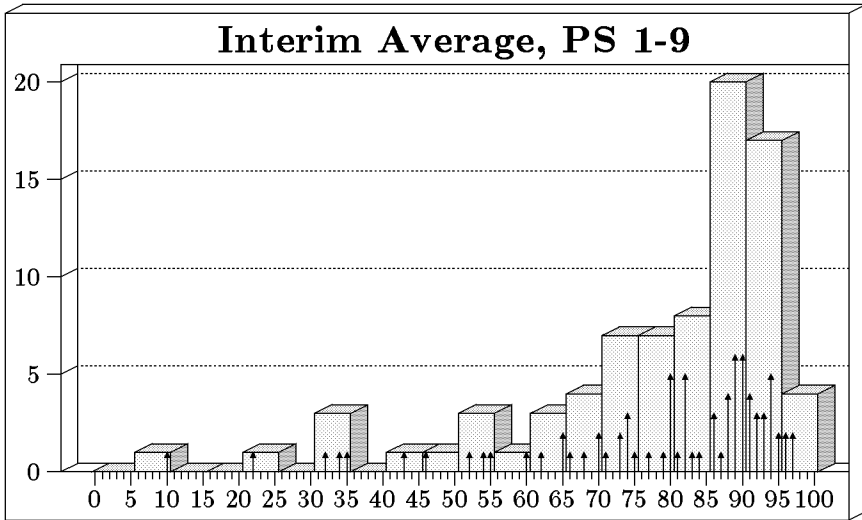
Bars show bins of 5, arrows show bins of 1.

Grade Distribution:

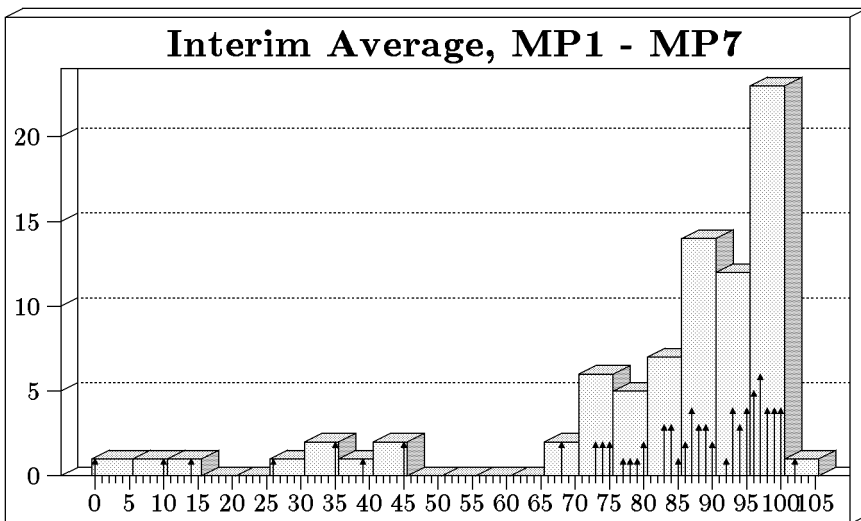
Grade	Range	Number	Percent	Number	Percent
A	85-100	9	11.1		
A+	94-100			0	0
A	88-93.9			4	4.9
A-	85-87.9			5	6.2
B	75.5-84.9	34	42		
B+	82-84.9			10	12.3
B	78.5-81.9			9	11.1
B-	75.5-78.4			15	18.5
C	66.5-75.4	30	37		
C+	72.5-75.4			13	16
C	69.5-72.4			13	16
C-	66.5-69.4			4	4.9
D	55-66.4	5	6.2		
F	0-54.9	3	3.7		



Mean: 71.6
 Median: 72.3
 Maximum: 100
 Standard Deviation: 8.4



Mean: 79
 Median: 86
 Maximum: 100
 Standard Deviation: 18



Mean: 82.5
 Median: 89.0
 Maximum: 100
 Standard Deviation: 21.9