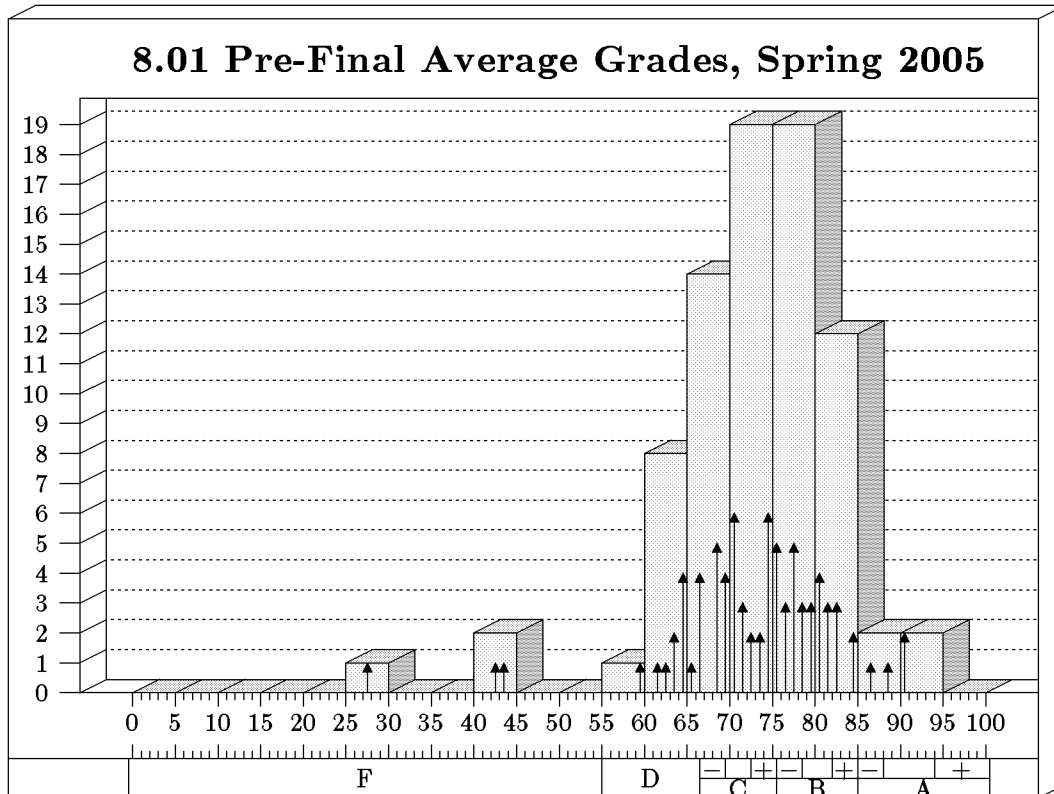


PRE-FINAL GRADE HISTOGRAMS

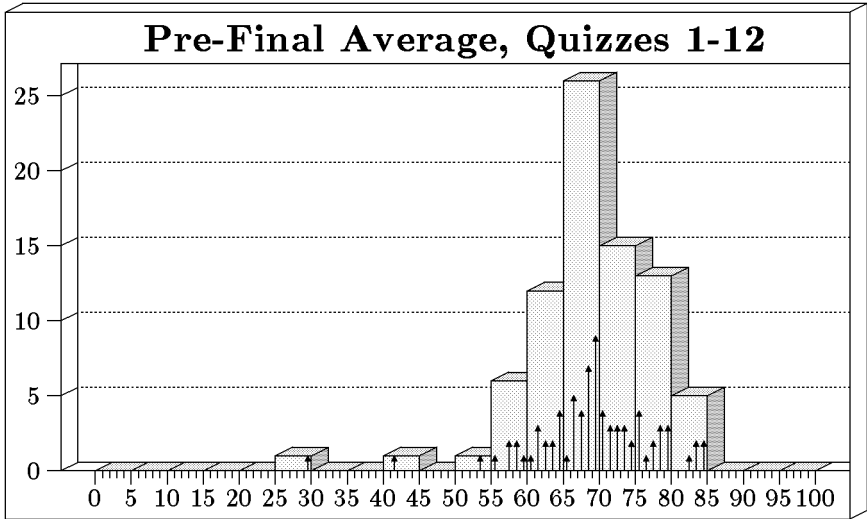


Students: 80 Mean: 72.8 Median: 74.3 Standard Deviation: 9.7

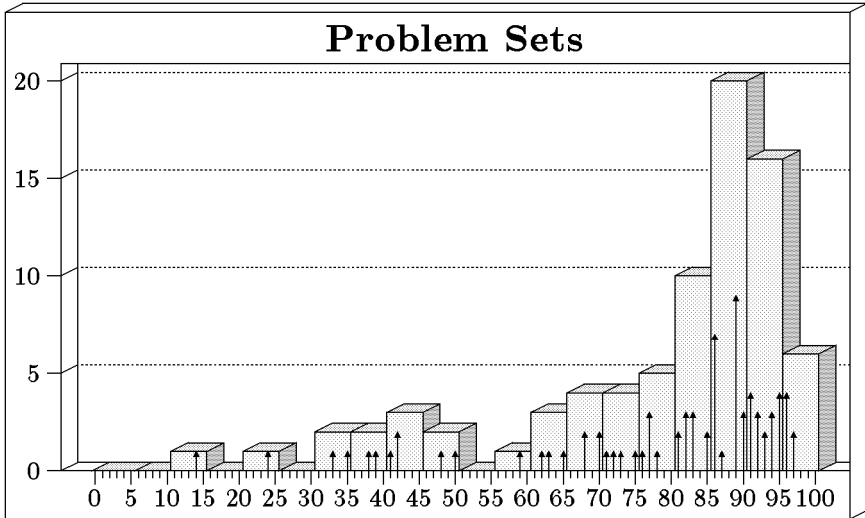
Bars show bins of 5, arrows show bins of 1.

Grade Distribution (using cuts from Interim Grades):

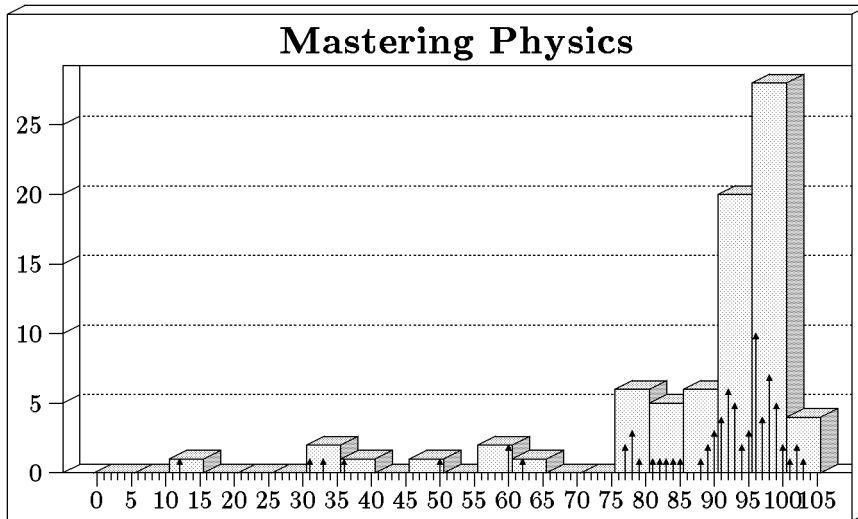
Grade	Range	Number	Percent	Number	Percent
A	85-100	4	5		
A+	94-100			0	0
A	88-93.9			3	3.8
A-	85-87.9			1	1.3
B	75.5-84.9	28	35		
B+	82-84.9			5	6.3
B	78.5-81.9			12	15
B-	75.5-78.4			11	13.8
C	66.5-75.4	34	42.5		
C+	72.5-75.4			12	15
C	69.5-72.4			14	17.5
C-	66.5-69.4			8	10
D	55-66.4	11	13.8		
F	0-54.9	3	3.8		



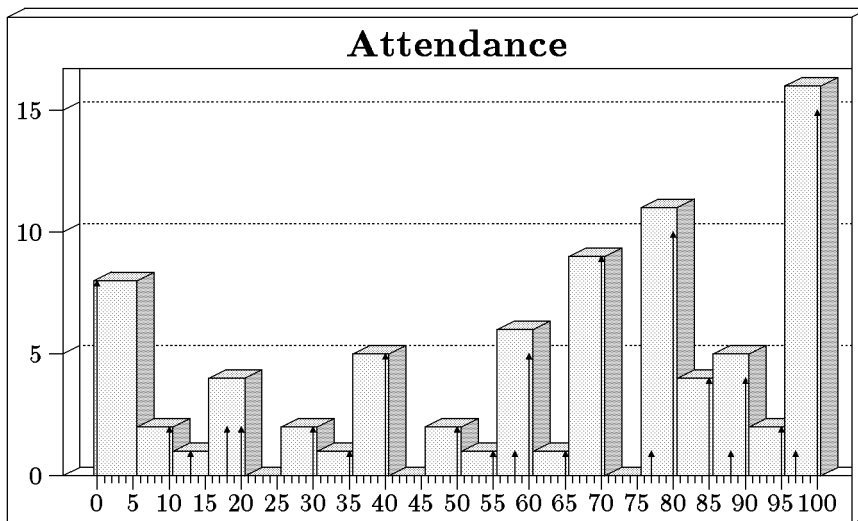
Mean: 68.8
 Median: 69.3
 Maximum: 100
 Standard Deviation: 8.7



Mean: 78.2
 Median: 85.5
 Maximum: 100
 Standard Deviation: 19.0



Mean: 87.6
 Median: 93.0
 Maximum: 100
 Standard Deviation: 17.3



Mean: 63.3
 Median: 70.0
 Maximum: 100
 Standard Deviation: 32.9