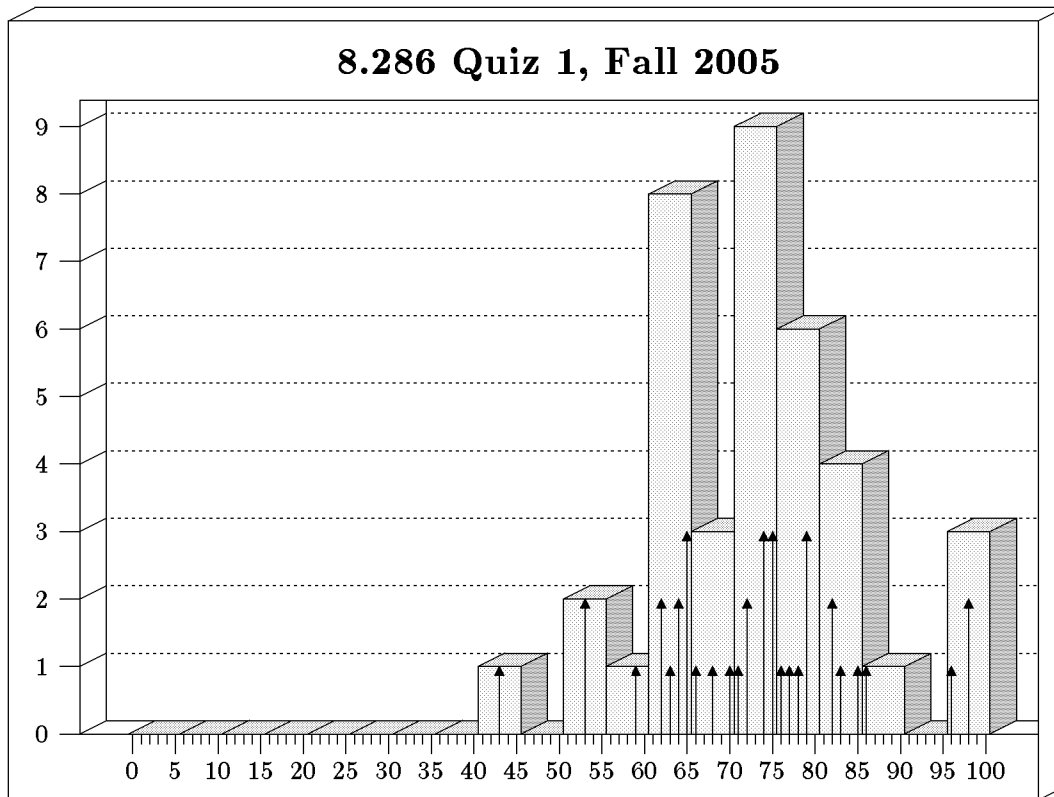


GRADE HISTOGRAMS

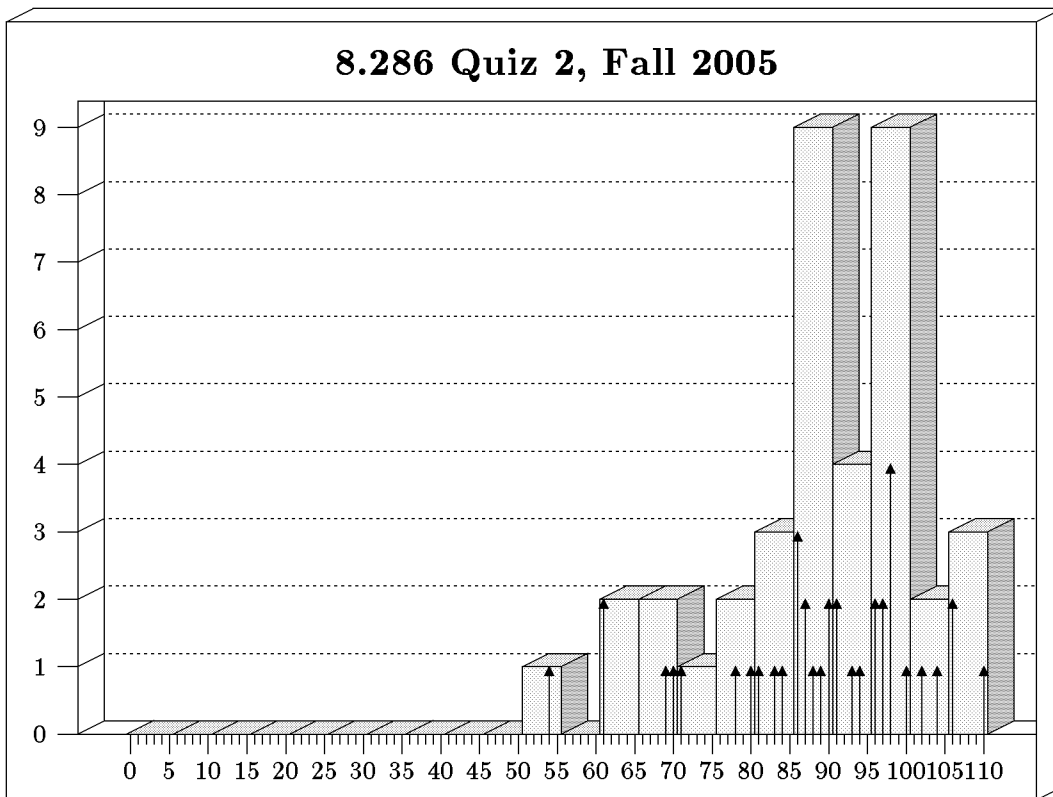
Quiz 1: October 18, 2005



Students: 38 Mean: 72.7 Standard Deviation: 11.7

Bars show bins of 5, arrows show bins of 1.

Quiz 2: November 10, 2005

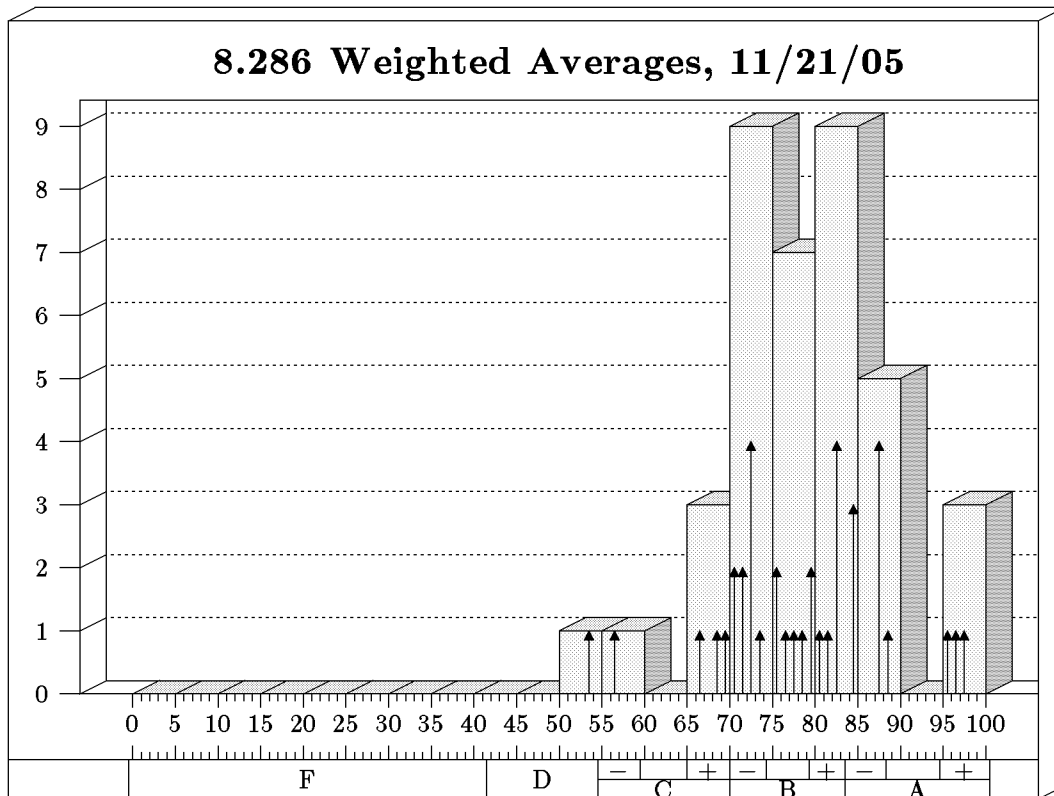


Students: 38 Mean: 88.3/110 Standard Deviation: 12.9

Bars show bins of 5, arrows show bins of 1.

Weighted Average, 75% Quizzes, 25% Problem Sets

Includes Quizzes 1 & 2, Problem Sets 1-4



Students: 38 Mean: 78.4 Standard Deviation: 9.5

Bars show bins of 5, arrows show bins of 1.

The grade cuts shown represent an estimate of the grade cuts that will be used at the end of the course, but they are subject to change. The cuts might shift, for example, to adjust for the level of difficulty of the third quiz.