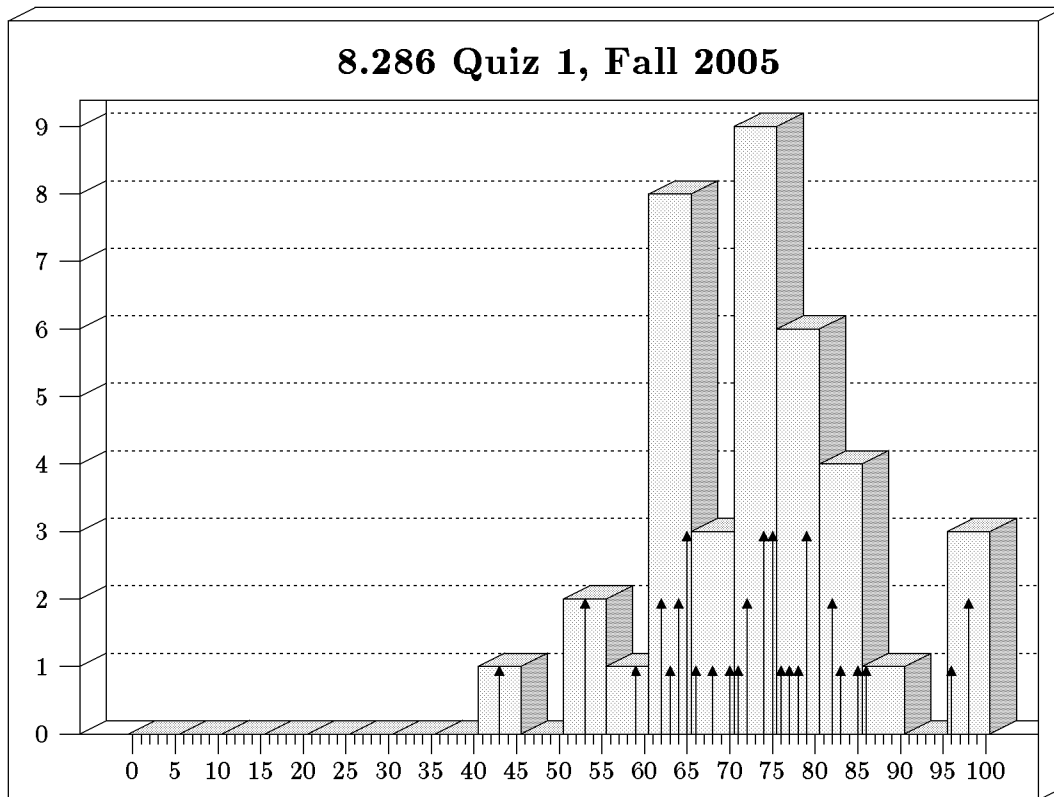


GRADE HISTOGRAMS

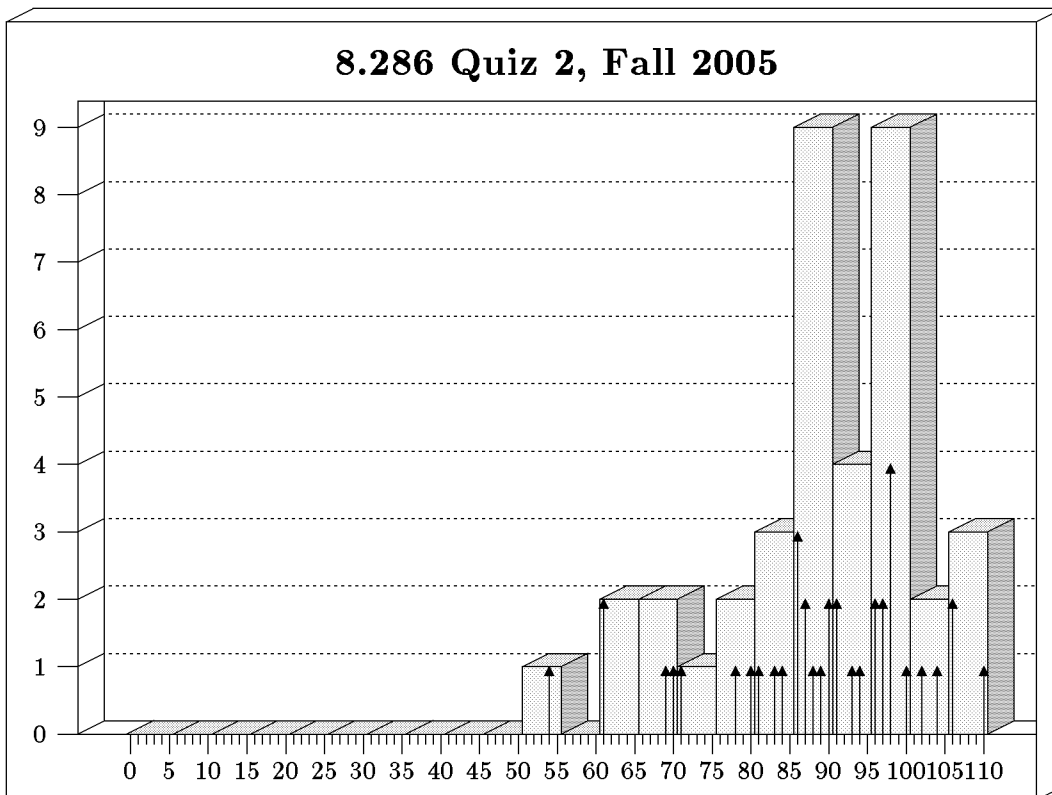
Quiz 1: October 18, 2005



Students: 38 Mean: 72.7 Standard Deviation: 11.7

Bars show bins of 5, arrows show bins of 1.

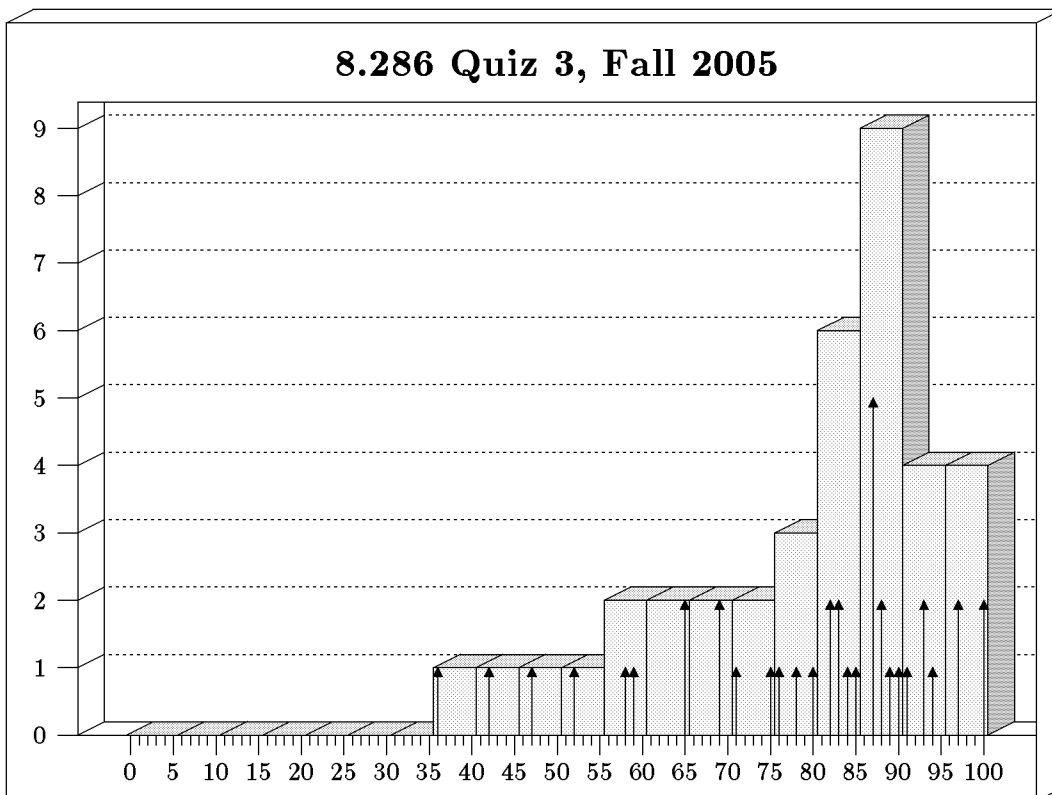
Quiz 2: November 10, 2005



Students: 38 Mean: 88.3/110 Standard Deviation: 12.9

Bars show bins of 5, arrows show bins of 1.

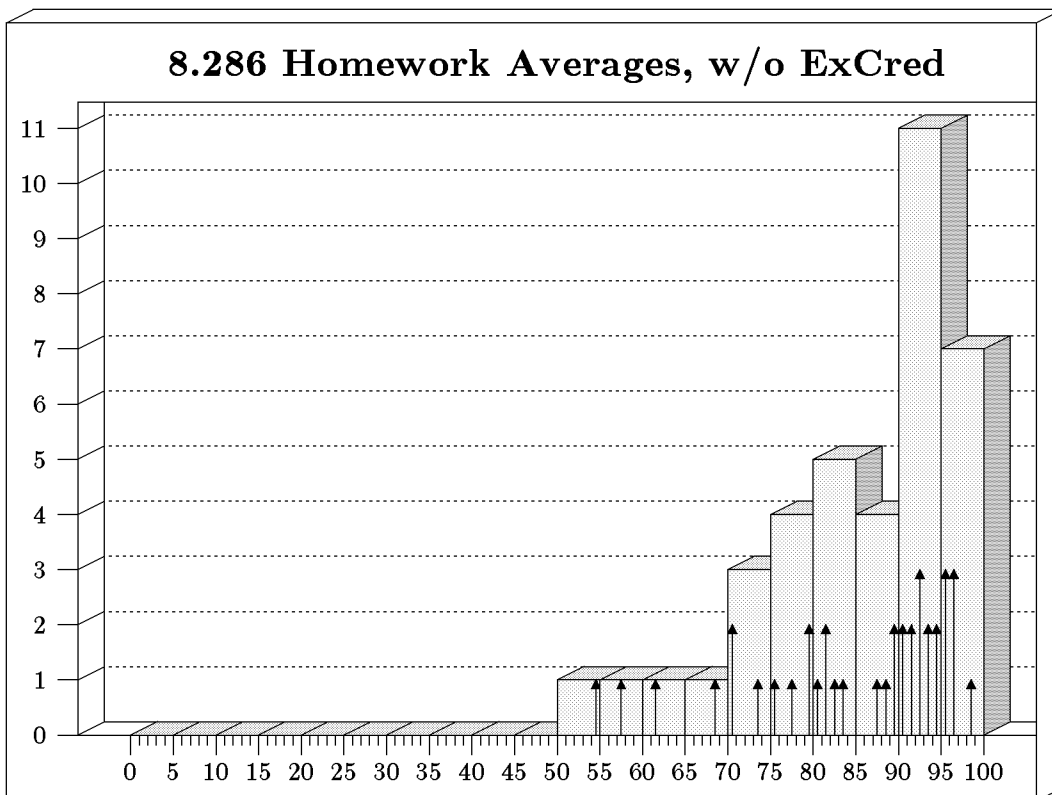
Quiz 3: December 8, 2005



Students: 38 Mean: 78.8 Standard Deviation: 15.9

Bars show bins of 5, arrows show bins of 1.

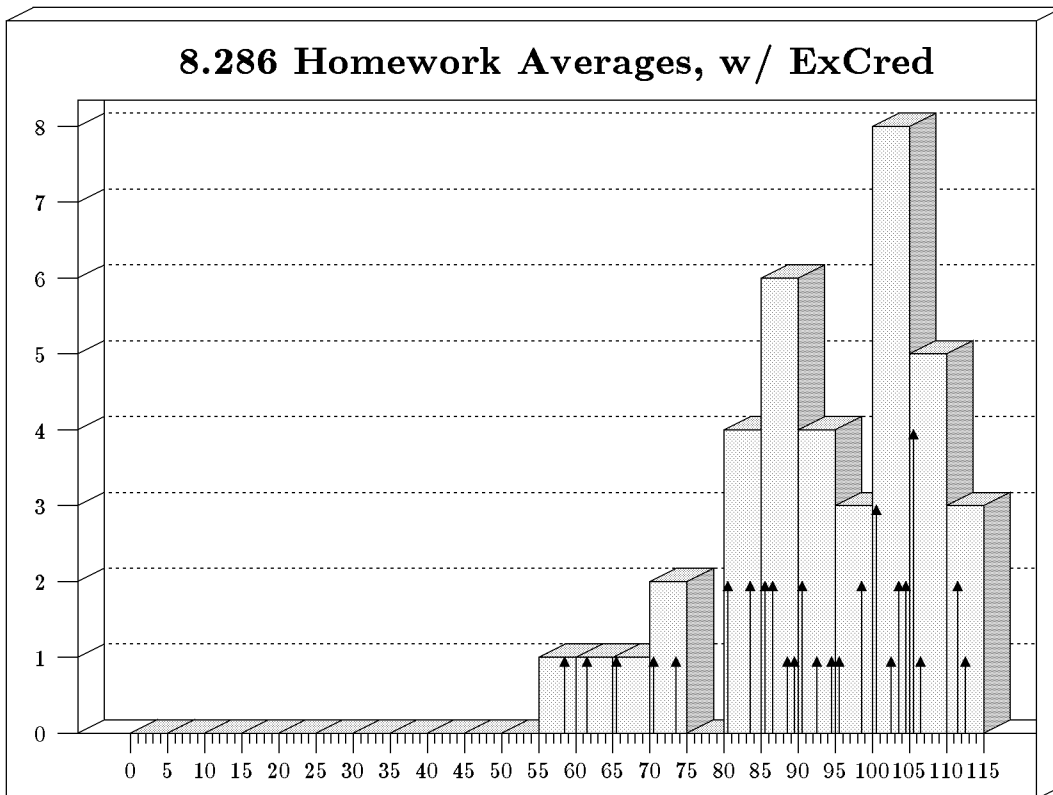
Homework Average, without Extra Credit



Students: 38 Mean: 84.8 Standard Deviation: 11.4

Bars show bins of 5, arrows show bins of 1.

Homework Average, with Extra Credit

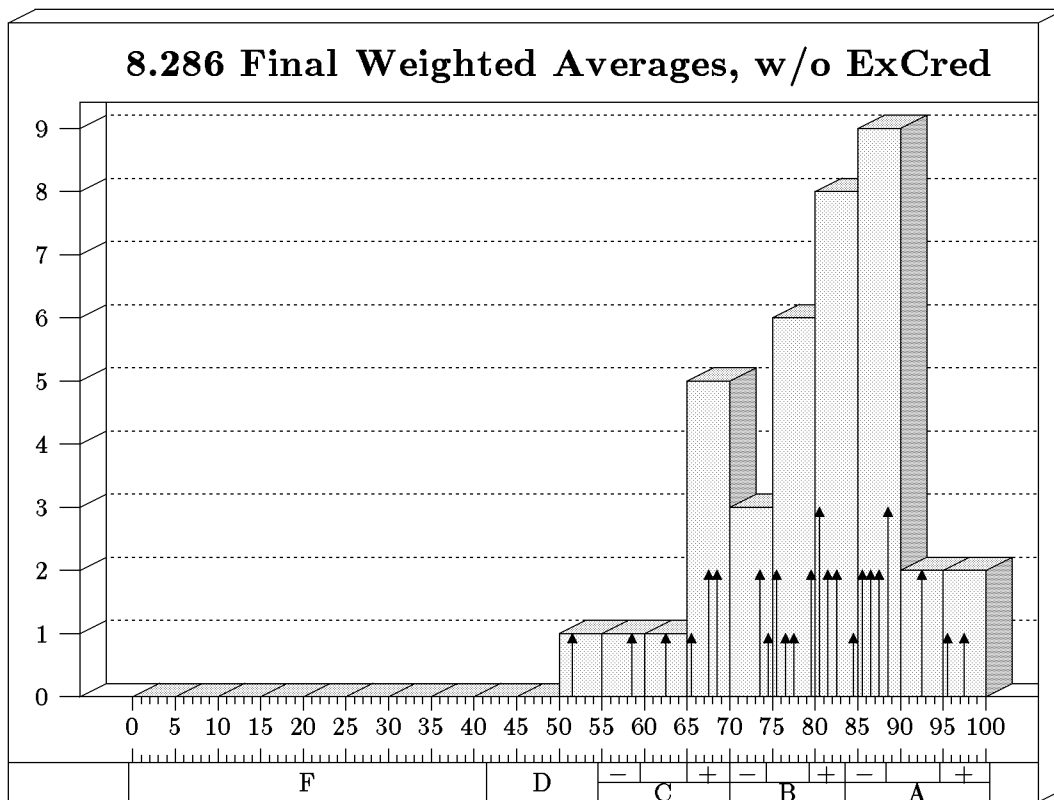


Students: 38 Mean: 92.7 Standard Deviation: 13.7

Bars show bins of 5, arrows show bins of 1.

Weighted Average, 75% Quizzes, 25% Problem Sets

Final 8.286 Weighted Averages, without Extra Credit



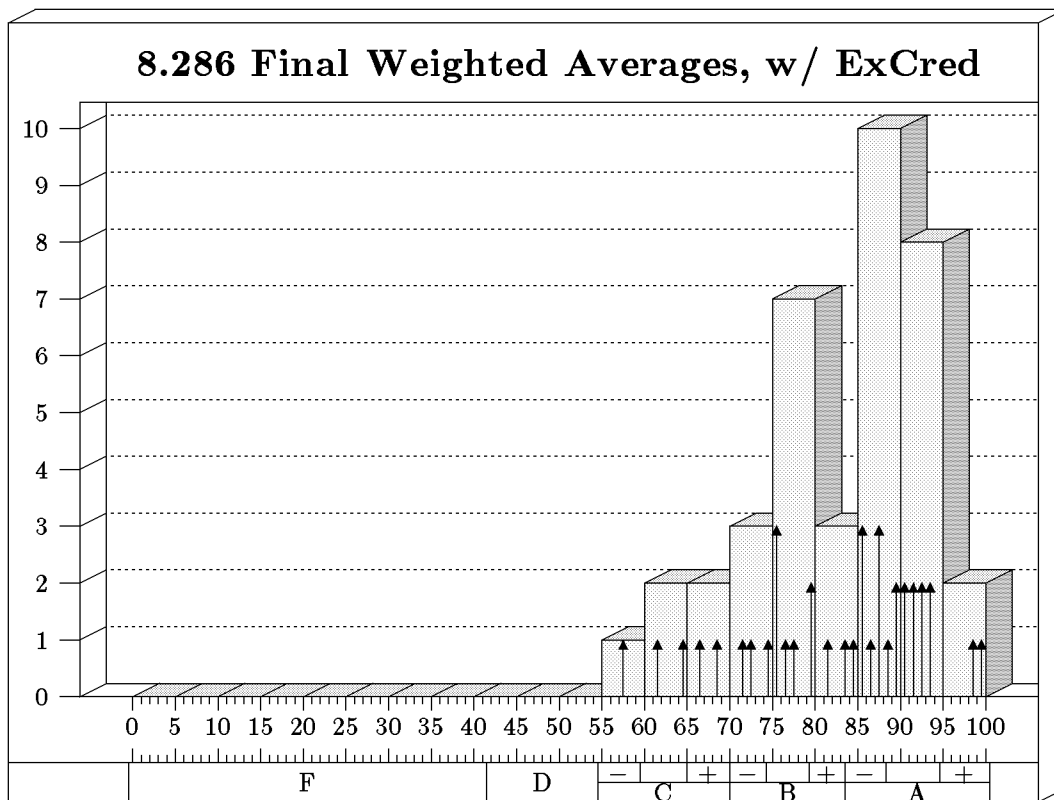
Students: 38 Mean: 79.2 Standard Deviation: 10.1

Bars show bins of 5, arrows show bins of 1.

GRADE	NUMBER	PERCENT
A	14	37
B	16	42
C	8	21

Weighted Average, 75% Quizzes, 25% Problem Sets

Final 8.286 Weighted Averages, with Extra Credit



Students: 38 Mean: 82.4 Standard Deviation: 10.1

Bars show bins of 5, arrows show bins of 1.

GRADE	NUMBER	PERCENT
A	21	55
B	12	32
C	5	13