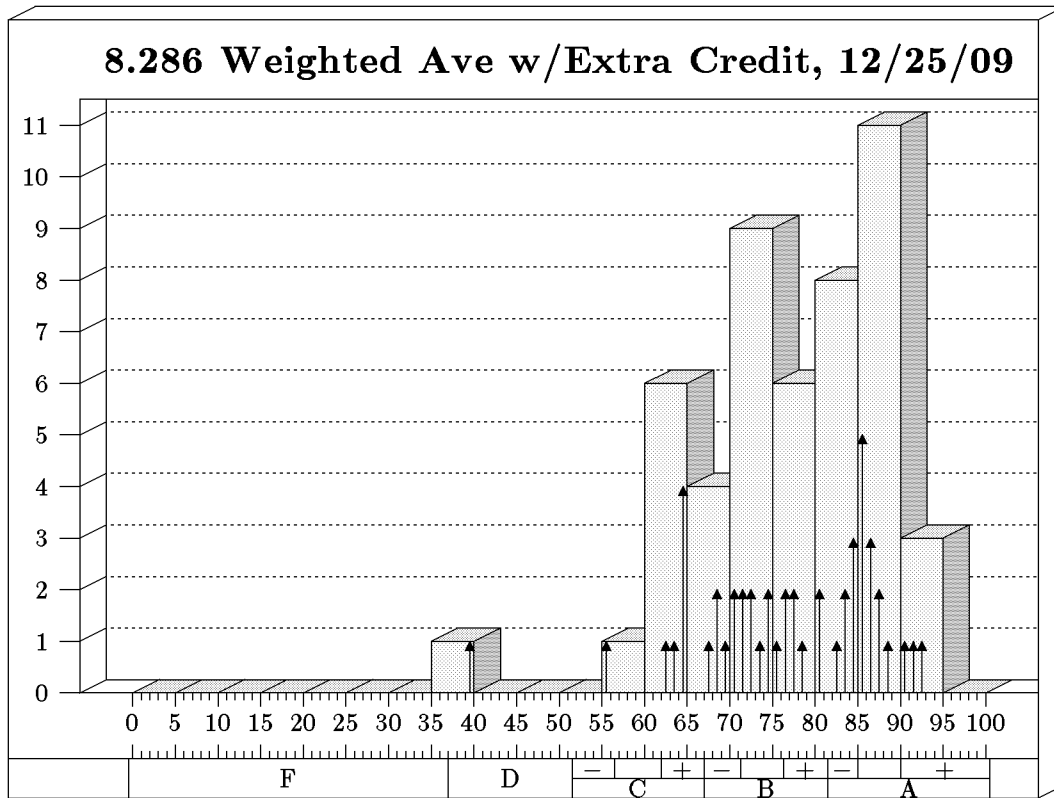


### FINAL GRADE HISTOGRAM



Students: 49      Mean: 76.5      Standard Deviation: 10.4

Bars show bins of 5, arrows show bins of 1.

### Grade Distribution Table

Grade	Range	Number	Percent	Number	Percent
A	81.5-100	22	44.9		
A+	90.0 - 100			3	6.1
A	85.0 - 89.9			14	28.6
A-	81.5 - 84.5			5	10.2
B	67.0-81.4	19	38.8		
B+	76.3 - 81.4			5	8.2
B	71.3 - 76.2			12	26.5
B-	67.0 - 71.2			2	4.1
C	51.5-66.9	7	14.3		
C+	62.0 - 66.9			7	12.2
C	56.5 - 61.9			0	0.0
C-	51.5 - 56.4			0	2.0
D	37.0-51.4	1	2.0		
F	0-36.9	0	0.0		

The table shows the actual grade assignments, which in some cases were higher than the numerically determined grades.