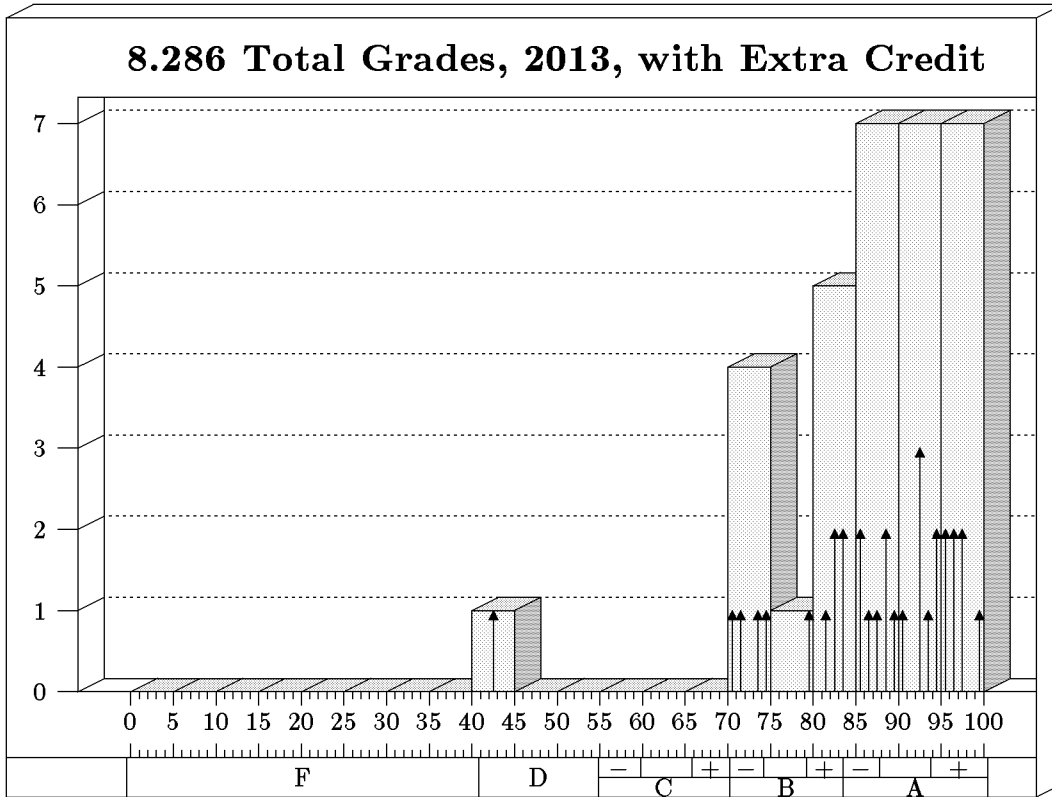


FINAL WEIGHTED AVERAGE GRADE HISTOGRAM

Date: December 20, 2013



Students: 32 Mean: 86.4 Standard Deviation: 11.1

Bars show bins of 5, arrows show bins of 1.

Grade	Range	Number	Percent	Number	Percent
A	83.5-100	21	65.6		
A+	93.8-100			9	28.1
A	87.8-93.7			10	31.3
A-	83.5-87.7			2	6.3
B	70.2-83.4	10	31.3		
B+	79.2-83.4			6	18.8
B	74.2-79.1			1	3.1
B-	70.2-74.1			3	9.4
C	54.8-70.1	0	0.0		
C+	65.8-70.1			0	0.0
C	59.8-65.7			0	0.0
C-	54.8-59.7			0	0.0
D	40.8-54.7	1	3.1	1	3.1
F	0-40.7	0	0.0	0	0.0

The table shows the actual grade assignments, which in some cases were higher than the numerically determined grades.