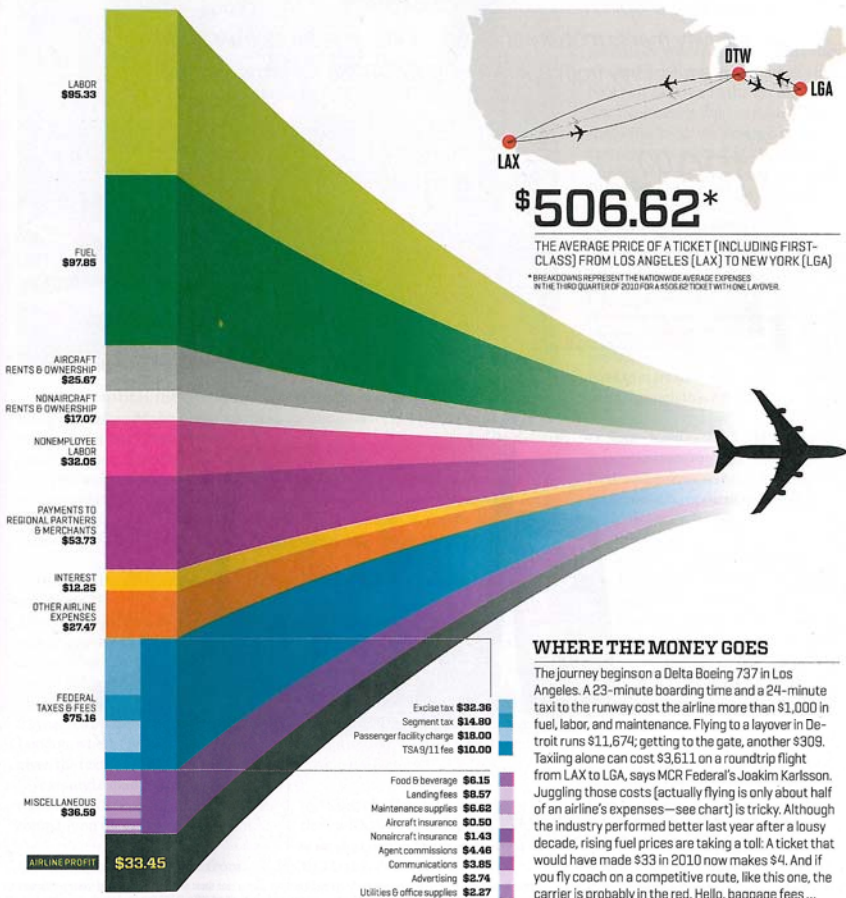


# FLIGHT PATTERNS

EVER WONDER WHAT'S BEHIND THE RISING PRICE OF AN AIRLINE TICKET? THE COST BREAKDOWN MAY SURPRISE YOU.

By Anne VanderMey | Graphic by Pitch Interactive



## WHERE THE MONEY GOES

The journey begins on a Delta Boeing 737 in Los Angeles. A 23-minute boarding time and a 24-minute taxi to the runway cost the airline more than \$1,000 in fuel, labor, and maintenance. Flying to a layover in Detroit runs \$11,674; getting to the gate, another \$309. Taxing alone can cost \$3,611 on a roundtrip flight from LAX to LGA, says MCR Federal's Joakim Karlsson. Juggling those costs [actually flying is only about half of an airline's expenses—see chart] is tricky. Although the industry performed better last year after a lousy decade, rising fuel prices are taking a toll: A ticket that would have made \$33 in 2010 now makes \$4. And if you fly coach on a competitive route, like this one, the carrier is probably in the red. Hello, baggage fees ...