



Association of Independent Living Groups
Panhellenic Association

Interfraternity Council
Living Group Council

Writing the Next Chapter for MIT's FSILGs

Introducing the 2012 FSILG Strategic Plan

Alumni Leadership Conference September 21, 2012

Partners in Creating This Plan

Steve Baker '84, AILG Vice Chair

Tommy Anderson '13, Interfraternity Council President

Denzil Sikka '13, Panhellenic Association President

Eyas Alsharaiha '13, Living Group Council Speaker

Bob Ferrara '67, MIT Division of Student Life





What is the AILG?

- Represents all 41 FSILGs
 - Alumni property-owning corporations, alumni advisory bodies, and student chapters / ILGs
- ~1500 student members
- Provides housing for 918 undergraduates in 40 properties with asset value exceeding \$100M
- All-volunteer alumni leadership



Association of Independent Living Groups
Panhellenic Association

Interfraternity Council
Living Group Council

AILG Governance

- Each FSILG alumni/ae governing body is a member, with one vote
- Board of Directors (6), with Standing and Ad-Hoc Committees
- Composed of alumni volunteers, with admin support from DSL and FCI
- Plenary meets 5 times a year; Board and committees meet monthly



Alumni Leadership Conference September 21, 2012



Why a Strategic Plan?

- Parallels DSL strategic planning effort
- Revisits and updates previous strategic efforts
- Sets a new vision for next 5 years and beyond
- Refocuses community on common goals
- Outlines a systematic approach to facility issues



Association of Independent Living Groups
Panhellenic Association

Interfraternity Council
Living Group Council

Plan Process – Lots of Consultation

- AILG Strategic Planning Committee
- 20+ focus groups with stakeholders; 4 community meetings
- 5 Themes, 22 Initiatives
- 200+ participants in planning process
- Adopted by AILG and student governing councils





Association of Independent Living Groups
Panhellenic Association

Interfraternity Council
Living Group Council

Strategic Plan Themes

- Theme 1: Enhance the member experience
- Theme 2: Strengthen our partnership with the Institute
- Theme 3: Revitalize our facilities
- Theme 4: Enhance our community reputation
- Theme 5: Strengthen alumni/ae involvement with our community



Association of Independent Living Groups
Panhellenic Association

Interfraternity Council
Living Group Council

2012 FSILG Strategic Plan

<http://ailg.mit.edu/wp-content/uploads/2012/08/2012-FSILG-Community-Strategic-Plan-08-23-12.pdf>



Alumni Leadership Conference September 21, 2012



Association of Independent Living Groups
Panhellenic Association

Interfraternity Council
Living Group Council

Next Steps

- Recruit Initiative “Champions”
- Steering committee for each Theme
- Executive committee; oversees process and seeks funding for plan effort
- Visiting committee; provides high-level advice
- Integration with student councils



Association of Independent Living Groups
Panhellenic Association

Interfraternity Council
Living Group Council

The Interfraternity Council

MIT is home to 27 fraternity chapters, made up of 52% of the undergraduate male population. Our members are united through the continuous pursuit of character, scholarship, leadership, service, and brotherhood.



The purpose of the Interfraternity Council (IFC) is to assist in providing a total educational experience for the fraternity community, through the promotion of interfraternal relations.



Association of Independent Living Groups
Panhellenic Association

Interfraternity Council
Living Group Council

IFC Governance

An Executive Board of 7 Officers

President, **Tommy Anderson**

Vice President, **Louis DeScioli**

Judicial Committee Chair, **Kyle Smith**

Programming & Recruitment Chair,
Evan Wang

Public Relations Chair, **Douglas
Sanchez**

Risk Manager, **Alexis Ludena**

Executive Assistant, **Alex Kiefer**



Bi-weekly meeting of the Presidents' Council,
consisting of the Executive Board and all fraternity
Presidents.

Alumni Leadership Conference September 21, 2012



Association of Independent Living Groups
Panhellenic Association

Interfraternity Council
Living Group Council

IFC Strategic Task Force

- Oversight Committee
- Action Committees
 - Alumni Relations
 - Community Relations
 - Fraternal Values
 - Institute Relations
 - Leadership
 - Member Programming
 - Recruitment



Oversight Committee

- **Purpose:** To serve as a liaison between the Presidents' Council and all Action Committees
- **Responsibilities:**
 - Appoint all Action Committee Chairs
 - Meet biweekly with each Chair
 - Set deadlines for important objectives with all Chairs
 - Report on the progress of all Action Committees at each meeting of the Presidents' Council



Action Committees

Purpose: To carry out action items related to specific initiatives from the *2012 FSILG Community Strategic Plan* for the MIT fraternal community.

Chair Responsibilities:

- Determine the membership of the committee
- Set the committee's agenda and meeting frequency
- Ensure the progress of the committee and see to the timely completion of tasks
- Serve as a liaison to the FSILG Strategic Plan Committee for the appropriate initiatives





Association of Independent Living Groups
Panhellenic Association

Interfraternity Council
Living Group Council

The Panhellenic Association

- Is the governing body of all six MIT sororities.
 - Alpha Chi Omega, Alpha Epsilon Phi, Alpha Phi, Kappa Alpha Theta, Pi Beta Phi, Sigma Kappa
- Includes over 600 women – over 30% of women on campus – making it the largest women's group on campus.
- Provides membership development opportunities in academic, leadership, service, and social areas





Association of Independent Living Groups
Panhellenic Association

Interfraternity Council
Living Group Council

Panhel Council

The executive board has 7 officers:

President, **Denzil Sikka**

Vice President, **Christine Lai**

Head of Recruitment, **Lauren Allen**

Recruitment Programming, **Lia DiGiovanna**

Finance & Administration, **Philine Huizing**

Programming, **Olivia Papa**

Publicity, **Katherine Chasins**



Weekly meetings with the representatives of each chapter, the **Delegates**, and three elected **Cabinet** officers.

Frequent meetings with **Junior Panhel** officers

Alumni Leadership Conference September 21, 2012



Association of Independent Living Groups
Panhellenic Association

Interfraternity Council
Living Group Council

Strategic Plan Thoughts

- The FSILG Strategic Plan was received with positive feedback and acceptance by Panhellenic Community
- Sorority Presidents decided the three Themes that are most important to Panhellenic Community
 - Membership Experience
 - Partnership with Institute
 - Alumni Relations



Alumni Leadership Conference September 21, 2012



Tackling the Plan

- The Panhellenic Association is committing 14 members to the Strategic Plan.
 - Two Jr. Panhel members will be on all Theme committees
 - A cabinet member will be an extra mind championing Themes 1, 2, and 5
 - The Executive Board will maintain tabs on all five Theme committees gathering updates
 - Panhel's Vice President, Christine Lai, will be part of Strategic Plan Executive Committee
- Purpose of this system: provide younger members the opportunity to get involved and allow for checks and balances



Association of Independent Living Groups
Panhellenic Association

Interfraternity Council
Living Group Council

Living Group Council Snapshot

- Governing council for the six independent living groups

Epsilon Theta

Fenway House

Delta Psi/No. 6

pika

Student House

WILG

- Average GPA: 4.38 (Fall 2011)
- No common theme: some on campus, others aren't; some co-ed, others aren't; some co-ops, others co-ed fraternities; some local, others national, etc.



Association of Independent Living Groups
Panhellenic Association

Interfraternity Council
Living Group Council

The ILGs Today

- Diverse, close-knit communities
- Involved campus leadership
- Academic achievement



But also, our
communities face
some challenges...



Association of Independent Living Groups
Panhellenic Association

Interfraternity Council
Living Group Council

ILG Challenges



- Low recognizability for many ILGs; 3/6 ILGs are not known by 40%+ of student body
- High member turnover
- Short institutional memory
- Difficult officer transitions



The Strategic Plan

- Addresses ILG weaknesses and threats
- Action items include
 - sharing best practices in a number of categories,
 - nurturing member development,
 - enhancing structure of recruitment,
 - clear recommendations on improving facilities,
 - enhancing reputation and campus relations.



Association of Independent Living Groups
Panhellenic Association

Interfraternity Council
Living Group Council

The LGC's Involvement

- Passed a resolution on May 9 expressing support for the plan
- Provided input to keep the plan inclusive in language and content for the LGCs—incorporated into the final version
- LGC Secretary serves on Executive Committee





The LGC's Involvement

- LGC Speaker acts as a liaison to continue to solicit involvement, participation, and compliance from individual living groups
- Continue to encourage involvement in theme teams as team members and champions



Association of Independent Living Groups
Panhellenic Association

Interfraternity Council
Living Group Council

MIT Division of Student Life

- Supports the out-of-classroom experience of all MIT's undergraduate & graduate students
- Partners with Offices of Dean for Undergraduate Education (DUE) and Dean for Graduate Education (ODGE), which focus on academics.
- Began a Strategic Planning Process in 2011
- Seeks to incorporate FSILG planning efforts
- Full plan - <http://studentlife.mit.edu/strategic/plan>



Association of Independent Living Groups
Panhellenic Association

Interfraternity Council
Living Group Council

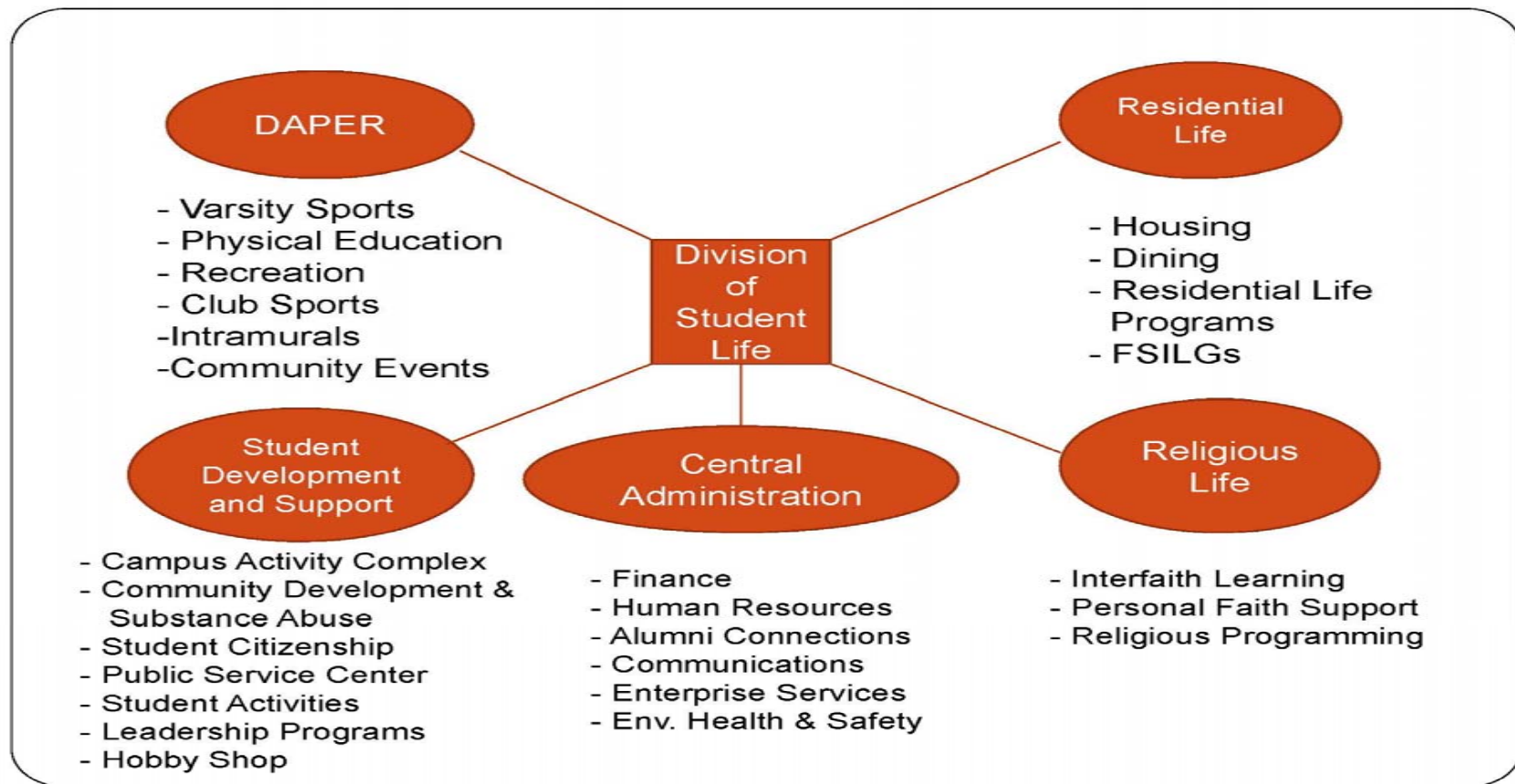
Major Components of DSL

- DAPER – Athletics, Physical Education, and Recreation
- Residential Life
- Student Development & Support
- Religious Life
- Central Administration





An Unconventional DSL Org Chart





Association of Independent Living Groups
Panhellenic Association

Interfraternity Council
Living Group Council

DSL Mission

Adopted 7/21/11

The Division of Student Life is a leader in providing exceptional living and learning environments for MIT students through a rich variety of opportunities that inspire academic achievement, innovative thought, leadership, and global citizenship.

As an integral part of MIT's educational mission, the Division of Student Life fosters a safe, healthy, and supportive environment centered on well-being, a commitment to learning, and the development of critical skills for personal growth. We place serving students as the highest priority for our staff, programs, services, and facilities. We partner with others to create a dynamic campus community grounded in personal and group responsibility, fairness and respect, where individual differences are expected and appreciated.



Association of Independent Living Groups
Panhellenic Association

Interfraternity Council
Living Group Council

1. **Enrich the student experience.** Impact the Impact Facilitate the vital social and intellectual connections of the MIT community on campus and around the world. Enhance that community by creating new opportunities for students to live and lead in ways that contribute to personal wellbeing and global citizenship
2. **Promote innovative technology.** Collaborate with students and MIT partners to ensure technology infrastructure and systems are adapted to future needs and usage is responsive to different learning styles and communications preferences.
3. **Steward MIT Resources.** Champion innovative, responsible and sound management of the fiscal and human resources entrusted to DSL by MIT.
4. **Revitalize our facilities.** Ensure all our facilities provide an environment that is conducive to learning and positive interaction by addressing the needs of deferred maintenance, safety and sustainability.

DSL Strategic Themes



Alumni Leadership Conference September 21, 2012



Recent Evolution of the DSL Strategic Plan

- **Spring 2012 Term – Building the Superstructure:**
 - Team Leader Meetings & 2 All Teams Retreats
 - Incorporation of DSL Visiting Committee comments
 - Open sessions on major MIT Initiatives –
MITx, Capital Renewal, Campus Security, FSILG Strategic Plan
 - Each of 4 Theme Teams Worked in Parallel
 - Plan incorporated much of FSILG plan, shared approach
 - Adopted on June 27
- **Fall 2012 Term – Prioritization and Implementation:**
 - Now selecting a subset of 119 Activities to work on first
 - Team staffing in early October



Association of Independent Living Groups
Panhellenic Association

Interfraternity Council
Living Group Council

Questions?



Alumni Leadership Conference September 21, 2012



Association of Independent Living Groups
Panhellenic Association

Interfraternity Council
Living Group Council

How you can help

- Become an initiative champion or join a Theme coordinating committee
- Encourage involvement by your FSILG
- Be a voice of support for plan
- Donate to IRDF to support plan implementation



Association of Independent Living Groups
Panhellenic Association

Interfraternity Council
Living Group Council

THANK YOU!

Alumni Leadership Conference September 21, 2012