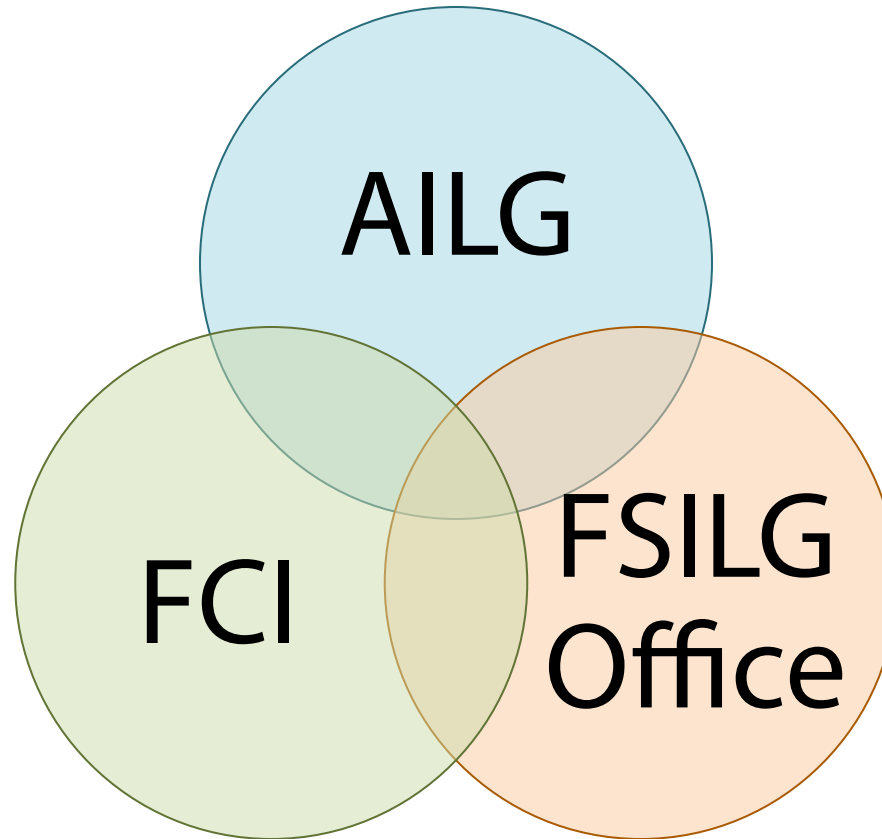


AILG Alumni Volunteer Seminar

April 16, 2015



*Partners in supporting the FSILG community
Please join us at the Thirsty Ear afterwards!*

Presenters

- Dan Wang '16
- Taylor Rose '16
- Bryan Bryson '07
- Bob Ferrara '67

Fraternity Presentation



Sorority Presentation



AILG – Association of Independent Living Groups

- Incorporated as 501C4 in 2007 – formerly FSILG alumni group
- Mission: “principal voice of the FSILG system with MIT and other entities”
 - Vehicle for sharing best practices and lessons learned
 - Provide long-term continuity, advice and guidance
- Board
 - Six members serve three year staggered terms, meets bi-monthly
- Committees
- Meetings
 - 4 plenary meetings per year
 - Annual Dinner: June 10, 2015

AILG Committees

- Accreditation
- Facilities
- Finance
- IT/Telecomm
- Community Relations
- Education
- Insurance
- Others formed as interest develops

AILG – The Accreditation Program

- **Mission**
 - Provide a program for community to exchange ideas for self improvement
 - Support FSILG members by operating the Accreditation Program as peers
 - Provide MIT an evaluation of the overall health of each FSILG
 - Program unique to MIT
- **People**
 - Coordinator: John Covert
 - Committee (Chair: Herman Marshall '78)
 - Review Teams
- **Activities**
 - Manage Accreditation Review Process (~30 per year)
 - Maintain Accreditation Web Site and Basic Data Form (BDF)
 - Coordinate Reporting
 - FSILGs
 - AILG Board
 - MIT
 - Share/Disseminate best practices and lessons learned

AILG – The Accreditation Review Process

- **For the FSILG**
 - Prepare basic data form (BDF) and submit in advance of accreditation visit
 - Host 3 hour accreditation visit (usually a Saturday) with review team
- **For the Review Team**
 - Review BDF in advance of accreditation visit
 - Speak to relevant MIT parties to gain insight into FSILG
 - Meet undergraduates and alumni of chapter during accreditation visit and tour, if applicable
 - Prepare report with accreditation recommendation
 - Submit to chapter and AILG Accreditation Committee
- **Report**
 - Accreditation decision is shared publicly
 - Report contents shared with accreditation committee and AILG board/MIT if applicable
 - Best practices shared on AILG website
- **Learning**
 - This is one of the best opportunities to learn about your FSILG and the FSILG community at large.

Facilities Committee

Functions and People

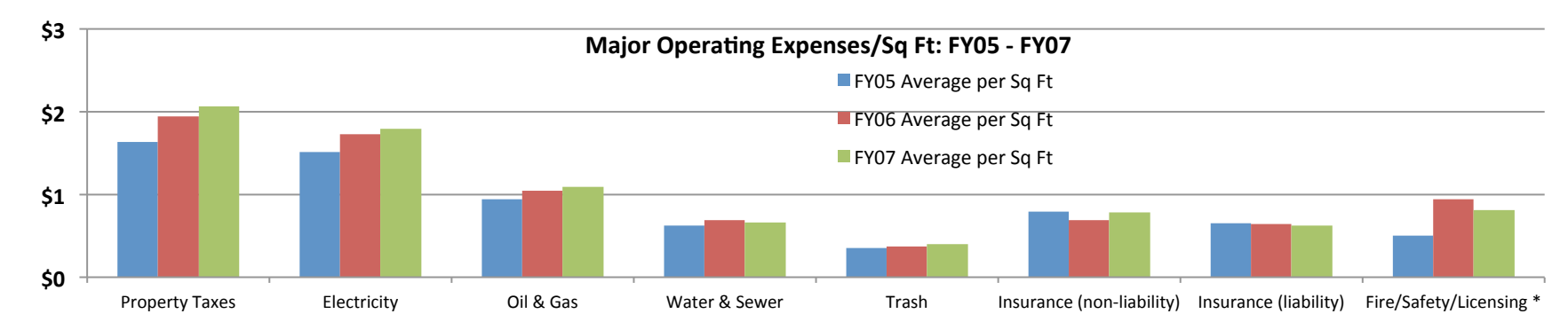
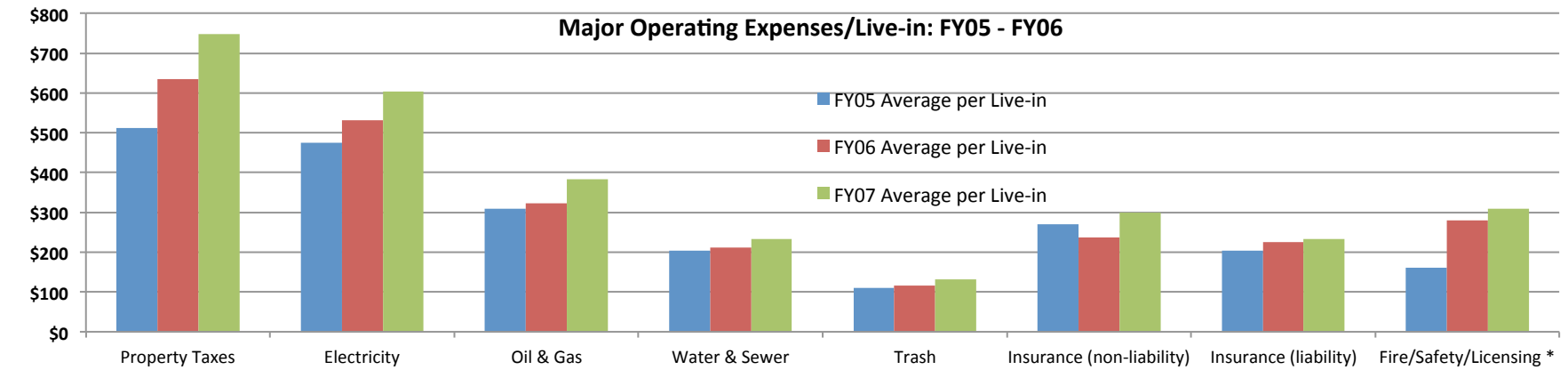
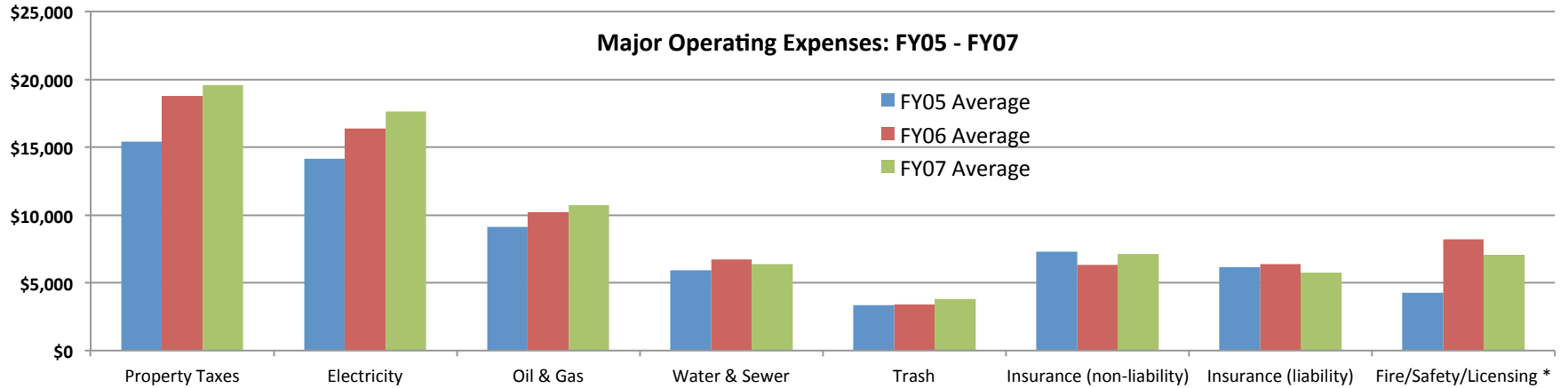
- "Facilities Management: Expectations and Baseline Practices"
- You, your undergraduates, professional contractors
- Building Safety Facilitator (BSF) and SLI
- FSILG Coop (FCI)
- ALLG Facilities Committee
- Roofdecks

But: You're independent, so we won't intervene unless you ask for help

AILG Finance Committee

- Housebill Survey
- Fundraising Seminar and Support
 - Next Seminar: April 23, 2015

Major Operating Expense Trends – FY2005 – FY2007



Housebill Analysis: Results

Great data available in the reports....

Chart 1: Average Resident Housebill (per resident, per semester or academic year)

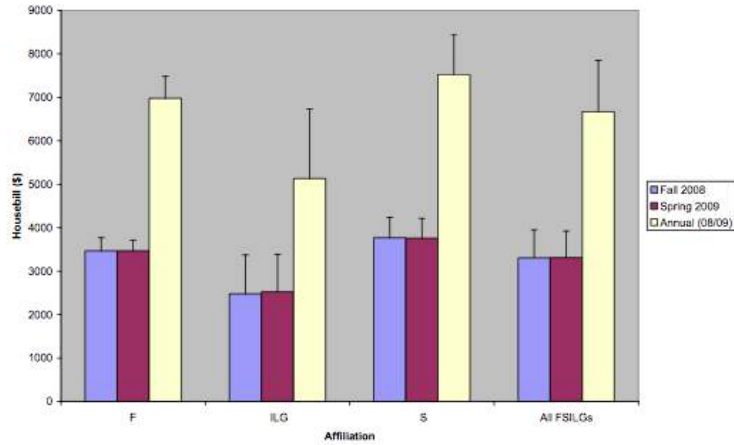


Chart 3: Total collected per member per academic year or calendar year

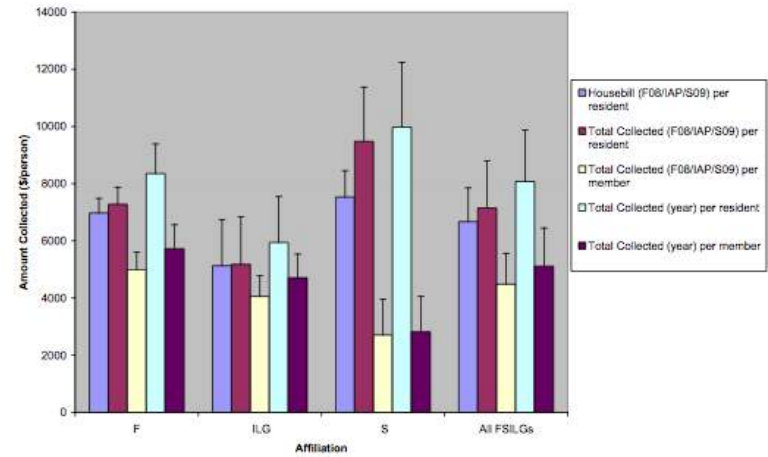


Chart 4: Housebill per House per 2008 academic year

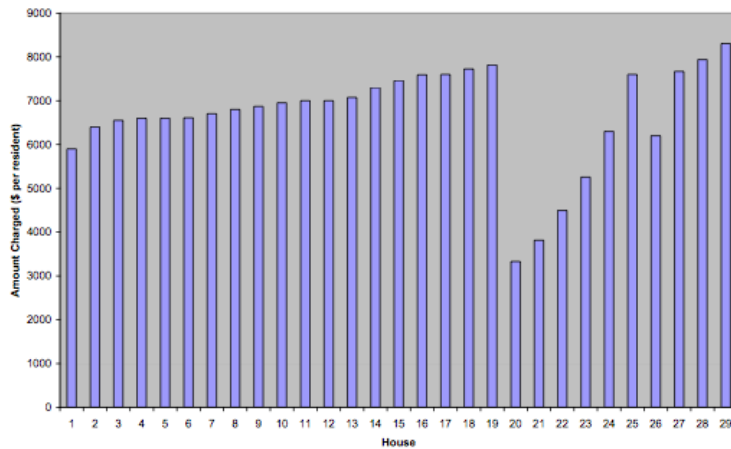
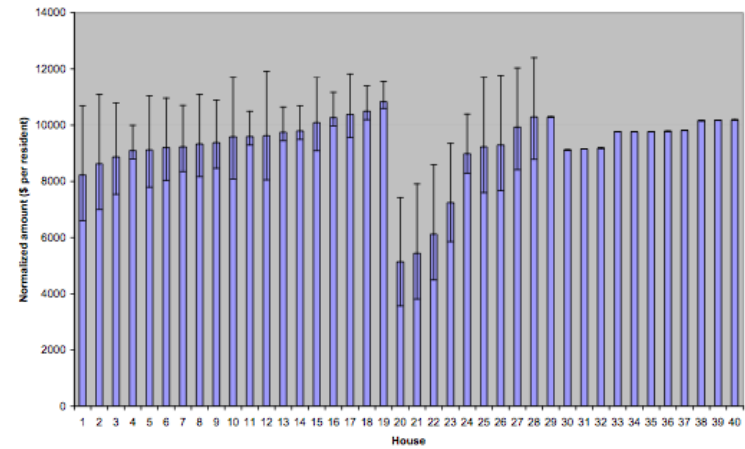


Chart 5: Annual housebill per resident normalized for food costs



AILG Committees

- Accreditation
- Facilities
- Finance
- IT/Telecomm
- Community Relations
- Education
- Insurance
- Others formed as interest develops

Alumni Association and MIT Services

- Alumni Association Communication Tools
- On-Line Alumni Directory & FSILG Toolkit
- Independent Residence Development Fund (IRDF)
- MIT Annual Fund Fundraising Assistance
- Governmental Support
- CARMA Program (with AILG)
- FSILG Office

Alumni Association Support for FSILGs

Email Listservs

- All chapters have @alumlist.mit.edu listservs for their alumni
 - Announcement-only
 - Designated editors
 - Appropriate alumni officers
 - Current member Alumni Relations Chair
 - Members can unsubscribe at anytime
 - Go to Infinite Connection
 - “My Account” → “Email Group Subscriptions”

FSILG Toolkit

<https://alum.mit.edu/volunteering/VolunteerTools/FSILGVolunteerToolkit>

FSILG Volunteer Toolkit | MIT Alumni Association's Infinite Connection - Mozilla Firefox

File Edit View History Bookmarks Tools Help

mit.edu https://alum.mit.edu/volunteering/VolunteerTools/FSILGVolunteerToolkit

Most Visited Getting Started Latest Headlines

FSILG Volunteer Toolkit | MIT Al...

Home > Volunteering > Volunteer Tools > FSILG Volunteer Toolkit

FSILG VOLUNTEER TOOLKIT

Help Advance the FSILGs

Want to improve your fraternity? Build support for your sorority? Get your living group involved in campus events? The FSILG Volunteer Toolkit can help. It provides valuable resources to get you started, including volunteer roles and best practices, historical living group information, links to campus offices serving the FSILG community, email and list request tools, and much more. **Select a topic on the right to access the information you need.**

Along with the Alumni Association, the following organizations are devoted to sustaining and improving the future of the FSILGs:

- [AILG](#) -the Association of Independent Living Groups
- The [FSILG Office](#) of the Division of Student Life
- The [FSILG Cooperative, Inc.](#) -the FSILG-owned purchasing and member services cooperative

Donors to the FSILGs help maintain this vital community which provides such a valuable experience to hundreds of MIT undergraduates. Names of alumni and friends who supported this community in fiscal year 2009 can be viewed under [Donor Listings](#). We are grateful for your support.

networks
benefits & services
volunteering
learn
travel
news & views

MIT STUDENTS
PARENTS ASSOCIATION

GIVING TO MIT

Volunteer Annual Report

Alumni Leadership
Conference

Become a Volunteer

Profiles

Recognition & Awards

Volunteer Tools

NOMINATIONS GUIDE

FSILG VOLUNTEER TOOLKIT

Roles & Recognition

Event Planning &
Fundraising

Networking &
Communication

Donor Listings

PROJECT FUNDRAISING

FSILG VOLUNTEER TOOLKIT

GETCONNECTED

CHANGE COLOR SCHEME << >>

LOGIN

Login Name

Password

LOGIN

[Forgot login name or password?](#)
[Not registered yet?](#)

CLOSE MYLINKS ▾

FSILG Alumni Volunteer Course

Online Alumni Directory

- FSILG alumni are coded each year
 - Searchable by chapter
 - OAD tutorial <https://alum.mit.edu/students/NetworkwithAlumni/oadtips>
 - Career Advisors, please sign-up
 - <https://alum.mit.edu/benefits/CareerGuidance/ICAN>
 - Data Request Form
 - <https://alum.mit.edu/volunteering/VolunteerTools/FSILGVolunteerToolkit/NetworkingCommunication/data-request>

What is the IRDF (Independent Residence Development Fund) ?



What is the IRDF (Independent Residence Development Fund) ?

- The IRDF was created to specifically promote the interests of MIT's FSILGs.
- All transactions between MIT & Alumni Corporation
- Made possible through tax-deductible contributions to MIT from alumni/ae (i.e. from us)
- There are four kinds of funding assistance:
 - IRDF Construction Loans
 - IRDF Educational Project Grants
 - IRDF Educational Operating Grants
 - IRDF Community-wide Grants

General IRDF Information

- The FSILG Cooperative, Inc provides application support for all IRDF grants and loans - sklemm@fsilg.coop or 617.452.4053
- All forms available on IRDF web site at <http://web.mit.edu/irdf/>
- The IRDF also grants for key community-wide safety & educational initiatives, such as:
 - Carbon Monoxide sensors
 - Insurance administration
 - Part of the Safety, Licensing, & Inspection (SLI) Program
 - Fire Radio – replacement of analog phone lines for alarms
 - Community Network Upgrade Project (a \$2M+ project!)
- Applications are auditable, and may be reviewed in detail by MIT's attorneys
- A word to the wise: consult with the FCI and apply early – well before your fiscal year end or before a project begins

Fundraising Campaign Help for FSILG Alumni House Corporations

- ALLG Finance Committee
 - Seminar next week – April 23 at 8:30AM
 - experienced campaign people can consult
 - contact esabine@alum.mit.edu or rferrara@mit.edu
- MIT Alumni Fund – [FSILG Fundraising Guide](#)
 - Meet with Annual Fund Director Steve McAlister
 - Identify MIT donors with major capacity, discuss strategy
- Society for the Preservation of Greek Housing ([SPGH](#))
 - Good “Third party” solution for older houses
 - Most FSILGs qualify at 90% of project cost
 - Chi Phi, Theta Chi, Sigma Chi, Lambda Chi experience @ MIT
- Donor Recognition from MIT
 - If given via IRDF, full class credit
 - If given to chapter or SPGH, new Alumni Association [web site](#)
- Other ideas on the [FSILG Toolkit](#)

CARMA Program

- Chapter Alumni Risk Management Advisor
 - Purpose: support chapter risk manager and members
 - Alumni/ae with special training and access to MIT resources
 - Topics include: alcohol, mental health, sexual assault, wellness, etc.
 - Four general sessions per year with MIT experts
 - Young alumni especially suited for this role

FSILG Office

- Tour of the FSILG Office
 - <http://studentlife.mit.edu/fsilg>
 - Advise IFC, Panhel, and LGC
 - Support individual chapters
 - Administer Graduate Resident Advisor Program
 - Communicate with MIT and Nationals
 - FSILG Programming (FSILG Awards, Greek Week, etc)
 - Respond to governmental requirements
 - Growing variety of other services
- Contact any of us or fsilg-office@mit.edu

Open Discussion, Q&A

Please join us at the Thirsty Ear afterwards!

For more information on the ALLG, visit: <http://ailg.mit.edu>