



February 25, 2006

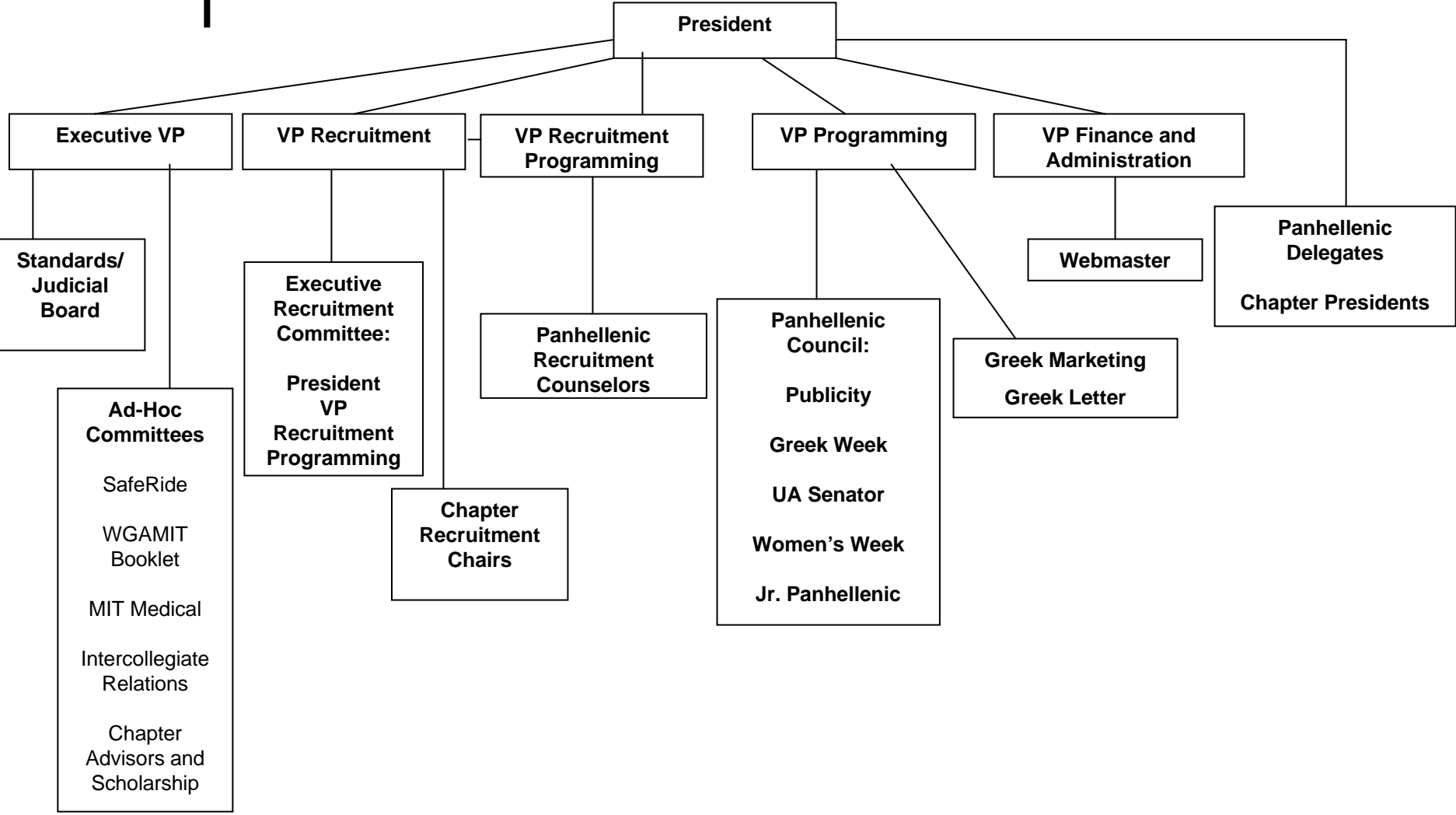


Panhel Mission Statement

“Panhel strives to foster personal development, empower, and enhance the lives of women in the MIT community in order to embrace our role as the largest women’s organization on campus”



Panhel Structure





Current Programming

- Discussion Meetings
 - Inter-sorority relations
 - Self-esteem and peer pressure
 - Combating stereotypes
- Risk Management Training
 - Dry mixer grant program
- All-Panhel Retreat
- New Member Luncheon
- Standards Board Training
- Officer roundtables
- Jr. Panhel
- Giving Tree



2005 Accomplishments

Many of our projects reach out to the larger community, whether that is all women on campus, the whole student body, or the MIT community as a whole

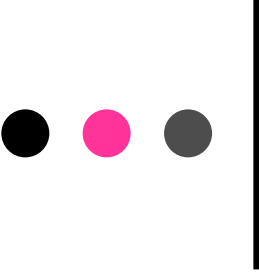
- Restructuring
- Orientation Events
 - Replacing the MIT-Wellesley Mixer with carnival for entire community
 - Organize student center party
 - Spa Night
- Women's Week
- Ad Hoc Committees
 - Women can come to Panhel with an idea for a project and we'll help them form a committee to make a difference



Women's Week 2005

Vision:

“To promote a model of femininity that incorporates and embraces the properties of intelligence, competence, and ambition.”



Women's Week 2005 Highlights

- Undergraduate Female Leadership Conference
 - Inspiring women to make change and equipping them with the tools and resources to do so
 - 50 faculty and administrators attended for lunch and discussion with conference attendees
 - Presentation by President Hockfield
 - Task force groups created to initiate change on campus
- “I am a feminist” campaign
 - Modernize the image of feminism
 - Encourage men and women to define *feminism* for themselves
- Addressed issues affecting all women:
 - Women's health and fitness
 - Sexual health
 - Independent Living
 - International women's issues
 - Diversity and tolerance



2005 Ad Hoc Committees

- Women's Bathroom
 - New women's bathroom on infinite corridor, near building 8
- Women's Guide Around MIT (WGAMIT)
 - Distributed to all female undergraduates
- SafeRide
 - Re-routed Boston East and West, added stops and added year round daytime saferide



2006 Ad Hoc Committees

- MIT Medical
 - Addressing issues concerning women's health at MIT
- Faculty Advising
 - Matching each sorority with a faculty advisor and trying to foster that relationship
- Inter-collegiate relations
 - Examining our relationship with other surrounding schools
- WGAMIT
 - Distributing an updated guide to freshmen women at CPW and orientation
- Saferide
 - Continuing to work on improving shuttle system



Recruitment Initiatives

- Year-round marketing plan
 - Poster campaign – “I’m also a Panhellenic woman”
 - Panhel accomplishments poster campaign
- Stronger presence at campus events
 - Orientation Carnival
 - Activities Fair
 - CPW Festival
 - Open Chapter Events
- Providing information for parents, faculty and staff
 - Networking packets
 - Parents brochure
 - Holiday Cards
- Recruitment Counselor program

● ● ● | Like the *new* women's
bathroom?



8-113

Brought to you by Panhel

with the help of Dean Immerman and MIT Facilities

panhel.mit.edu

HELLO, my name is ...

I'm involved in ...

I'm also a Panhellenic Woman

Ask me about sorority recruitment or visit panhel.mit.edu

**I am a Senate
Intern...**



Lindsay



**...I am also a
*Panhellenic Woman***

"I cannot imagine not being a part of my sorority - the women, the experiences define my four years at MIT and have made them the best they could be."

Register for Recruitment at Panhel.mit.edu

I am a NCAA National Champ...



"My sorority is about helping each other through the not-so-good times and celebrating with each other during the wonderful times"

Doria

...I am also a
Panhellenic Woman





Recruitment Statistics

	2004	2005
Women Registered	195	252
Round 1	161	238
Round 2	157	223
Round 3	141	189
Round 4 (Preference Night)	134	177
Signed MRAA	126	143
Received Bids	116	137
Women Receiving 1 st Choice	105	134
2 nd Choice	11	13
Acceptance	-----	100%



Our Vision

- To embrace our specific role within the MIT community
- To continue pursuing general women's issues on campus
- To develop a stronger Panhellenic and Greek community
- To strengthen relationships with the rest of the MIT community
- To promote a values based community
- To enhance the sorority experience for all affiliated women



Individual Goals

- Shannon Nees
 - President
- Jamie Karcesky
 - Executive Vice President
- Sherry Xie
 - Vice President of Programming
- Alyse Wu
 - Vice President of Recruitment Programming
- Tracy Chang
 - Vice President of Finance and Records