

Capillary filtering of particles during dip coating

Alban Sauret,^{1,*} Adrien Gans,^{2,3} Bénédicte Colnet,² Guillaume Saingier,²
Martin Z. Bazant,^{4,5} and Emilie Dressaire¹

¹*Department of Mechanical Engineering, University of California, Santa Barbara, California 93106, USA*

²*Surface du Verre et Interfaces, UMR 125, CNRS/Saint-Gobain, 93303 Aubervilliers, France*

³*FAST, CNRS, Université Paris-Sud, Université Paris-Saclay, 91405 Orsay, France*

⁴*Department of Chemical Engineering, Massachusetts Institute of Technology, Cambridge, Massachusetts 02139, USA*

⁵*Department of Mathematics, Massachusetts Institute of Technology, Cambridge, Massachusetts 02139, USA*



(Received 26 September 2018; revised manuscript received 27 December 2018;
published 10 May 2019)

An object withdrawn from a liquid bath is coated with a thin layer of liquid. Along with the liquid, impurities such as particles present in the bath can be transferred to the withdrawn substrate. Entrained particles locally modify the thickness of the film, hence altering the quality and properties of the coating. In this study, we show that it is possible to entrain the liquid alone and avoid contamination of the substrate, at sufficiently low withdrawal velocity in diluted suspensions. Using a model system consisting of a plate exiting a liquid bath, we observe that particles can remain trapped in the meniscus which exerts a resistive capillary force to the entrainment. We characterize different entrainment regimes as the withdrawal velocity increases: from a pure liquid film, to a liquid film containing clusters of particles, and eventually individual particles. This capillary filtration is an effective barrier against the contamination of substrates withdrawn from a polluted bath and finds application against biocontamination.

DOI: [10.1103/PhysRevFluids.4.054303](https://doi.org/10.1103/PhysRevFluids.4.054303)

I. INTRODUCTION

A solid body dipped in a liquid bath emerges covered with a thin layer of liquid. This familiar phenomenon occurs, for instance, when withdrawing a probe from a biological sample, but it is also essential in many industrial settings [1]. Dip coating is commonly used to cover surfaces with a liquid layer of constant thickness, from several to hundreds of micrometers, depending on the conditions [2]. The thickness of the entrained film depends on the competition between the capillary pressure gradient and the viscous force at the liquid/solid interface through several factors such as the withdrawal speed, and the physical properties of the fluid and solid surface [1,3–5]. Recent advances in materials science combine modified surfaces and complex fluids to develop new coatings, with interesting physical and optical properties.

For a perfectly wetting Newtonian fluid, the first solution describing the thickness of the liquid film was proposed by Landau and Levich [3] and then Deryagin [4]. Most of the research on liquid film entrainment has since focused on the great diversity of homogeneous fluids and substrates and their influence on the film properties [6]. Indeed, the solutions to the hydrodynamic problem and the film features depend on the nature of the fluid, through bulk properties and boundary conditions. As non-Newtonian fluids are commonly used in industrial applications, studies have also investigated

*asauret@ucsb.edu

the influence of the rheological properties on the film thickness [7,8]. In addition, surfactants modify the interfacial properties of the fluid and the result of the dip-coating process. Experiments show that surfactants increase the thickness of the entrained liquid layer by modifying the flow in the liquid bath [9–13].

Much less emphasis has been placed on complex or heterogeneous fluids. In particular, a liquid bath can contain impurities in the form of rigid or soft particles, which may be entrained in the coating. For instance, microorganisms, sediments, and fragments of plastics are dispersed in natural water bodies and can easily contaminate solid surfaces. This transfer of particles is useful for biological processes and environmental measurements, but can also contribute to the dissemination of pathogens and pollutants. It is thus essential to be able to predict the conditions under which a particle dispersed in a liquid phase will be entrained in the liquid film and contaminate the substrate. Previous work on dip coating of suspensions has evidenced the entrainment of colloidal particles by a liquid film [14–16]. After withdrawal, the colloidal particles form complex patterns on the solid surface. The geometry of the patterns depends on the particle concentration, withdrawal speed, and evaporation of the liquid. Despite these recent advances, the transfer of dilute particles whose size is comparable to the film thickness continues to challenge the continuum description that applies to coated films of colloidal suspensions.

Over the past few years, studies have explored the influence of particles on interfacial dynamics, when the length scales of a liquid thread or film and the particle diameter are comparable. Because the particles deform the air-liquid interface, they strongly modify the geometry and instabilities of the liquid film [17–25]. In the dip-coating configuration, only a few studies have investigated the fate of individual non-Brownian particles in the meniscus and their entrainment in the film [26–28]. An experimental study by Kao *et al.* focused on the self-assembly of a monolayer of entrained particles [29] and bubbles [30] in the liquid film. Recently, Colosqui *et al.* considered two-dimensional (2D) numerical simulations of a small number of dilute particles and showed the existence of two regimes of entrainment that result in the formation of clusters of particles, either within the meniscus or in the liquid film [31]. They also suggested that no particles are entrained in the liquid film below a critical withdrawal velocity, corresponding to a coating film thinner than the particle diameter. However, a systematic validation of this prediction has yet to be performed. In addition, the entrainment condition provided by Colosqui *et al.* has not been compared to experimental results. Numerically, the cost of the 2D (and 3D) numerical simulations is too high to explore the validity of the entrainment condition. In addition, most applications involve 3D particles (spheres, aggregates, etc.) whose shape can influence the threshold for particle entrainment and the formation of clusters. There is therefore a need of systematic experiments to determine the conditions under which a particle is entrained in a liquid film during a dip-coating process.

In this paper, we show experimentally that capillary effects can prevent sufficiently large particles from being entrained in the liquid film during the dip-coating process. We also demonstrate that particles up to six times larger than the liquid film can contaminate the withdrawn surface and we show the relevance of our findings for microorganisms. In Sec. II, we first present our experimental approach: A glass plate is withdrawn from a liquid bath containing dispersed particles. In Sec. III, we highlight the existence of three regimes for increasing withdrawal velocity: one where the coating film is free of particles, one in which the film contains individual isolated particles, and one in which the entrained particles are assembled into clusters. We rationalize these observations in Sec. IV and provide a discussion of the scaling law that describes the entrainment. Finally, in Sec. V, we demonstrate that the capillary filtration mechanism is an original and effective way to prevent the contamination of a substrate dipped in a polluted liquid, containing particles or microorganisms.

II. EXPERIMENTAL METHODS

To study the entrainment of non-Brownian particles in a coated film, we withdraw a glass plate from a bath of viscous dilute suspension at constant velocity U . The plate entrains a liquid film whose thickness in the absence of particles obeys the classical Landau-Levich law [1,3,32].

The experiments are performed with density-matched polystyrene particles dispersed in silicone oil. We use high-density silicone oil, AP 100, AR 200, or AP 1000 (from Sigma Aldrich). Because of possible small temperature variations during the experiments, we measure the evolution of the viscosity and the density of the silicone oils in the temperature range $T \in [16^\circ\text{C}, 26^\circ\text{C}]$ with an Anton Paar MCR 501 rheometer. The dynamic viscosity for the silicone oil AP 100 is captured by the expression $\eta_{100} = 0.1315 - 0.0051(T - 20)$ (in Pa s), for the AR 200, $\eta_{200} = 0.2425 - 0.0077(T - 20)$, and for the AP 1000, $\eta_{1000} = 1.4227 - 0.0669(T - 20)$, where T is the temperature in degrees Celsius. The density can be calculated with the following expressions, for the silicone oil AP 100, $\rho_{100} = 1.0626 - 0.0008(T - 20)$ (in g cm^{-3}), for the AR 200, $\rho_{200} = 1.046 - 0.0008(T - 20)$, and for the AP 1000, $\rho_{1000} = 1.0871 - 0.0008(T - 20)$, where T is the temperature in degrees Celsius. The silicone oils have an interfacial tension at 20°C of $\gamma = 21 \pm 1 \text{ mN m}^{-1}$. The polystyrene particles of radius $a = [20, 40, 70, 125, 250] \mu\text{m}$ and average density of $\rho_p = 1055 \text{ kg m}^{-3}$ (Dynoseeds TS - Microbeads) are dispersed in the liquid. Between two experiments the suspension was thoroughly mixed and over the timescale of an experiment, typically between a few seconds to a few tens of minutes, the suspension can be assumed to be neutrally buoyant. Indeed, the settling velocity of a particle in a quiescent fluid is due to a density mismatch between the fluid and the particle, and is given by [33]

$$v = \frac{2}{9} \frac{\rho_f \Delta \rho g a^2}{\eta}, \quad (1)$$

where $\Delta \rho = \rho_p - \rho_f$ is the density difference between the particle and the fluid, v is the dynamic viscosity, g is the gravitational acceleration, and a is the radius of the particle. We compare the gravity-induced displacement of the particles with the distance traveled by the plate during an experiment. We found that this gravity-induced displacement is negligible for all suspensions and entrainment velocities. Therefore, the suspension can be considered as neutrally buoyant over the timescale of the experiment.

The volume fraction of particles in suspension ϕ is defined as the ratio of the volume of particles to the total volume of fluid. We work with dilute suspensions, i.e., $\phi < 5\%$. We can thus neglect the collective effects associated with dense mixtures, including their non-Newtonian rheology. In particular, we assume that the presence of particles does not significantly modify the viscosity of the dilute suspension. This approximation holds for many situations, including samples with biological contaminants, typically at very low concentrations.

Once homogeneous, the suspension is transferred to a container (110 mm long \times 40 mm wide \times 150 mm high) whose vertical motion is actuated by a stepper motor (Zaber), with a speed up to 2.4 cm s^{-1} with a $\pm 2\%$ precision. The solid substrate, a glass plate of thickness $l = 2 \text{ mm}$, width $w = 100 \text{ mm}$, and height $h = 120 \text{ mm}$ is initially dipped in the suspension and remains stationary during the experiment to prevent vibrations from disturbing the coated film. Prior to the experiments, the glass plates were thoroughly cleaned with isopropanol (IPA) and dried with compressed air. A new container was used for each set of experiments. As the container moves downward, the plate emerges from the bath at a constant velocity U and is coated with a liquid film over the 6.5-cm vertical course of the motor. A schematic of the experimental setup is shown in Fig. 1(a). The dip-coating dynamics, including the film thickness and composition, are recorded with a digital camera (Nikon D7100) and a 200-mm macrolens focused above the meniscus. To detect the presence of the smallest particles ($a = 20 \mu\text{m}$), we also use a long working distance microscope lens (10 \times EO M Plan Apo Long Working Distance Infinity Corrected from Edmund Optics).

The thickness of the liquid film without particles is determined using a gravimetry method. The volume of suspension removed from the container during a withdrawal can be obtained from the difference of mass measured by a scale δm and the fluid density ρ , with $V = \delta m / \rho$. The main issue with this method is the presence of a lower edge effect [26]. Therefore, we perform two withdrawal experiments with different dipping lengths $l_2 > l_1$. Subtracting the masses obtained with the two dipping lengths allows defining and subtracting the volume of fluid that remains attached to the

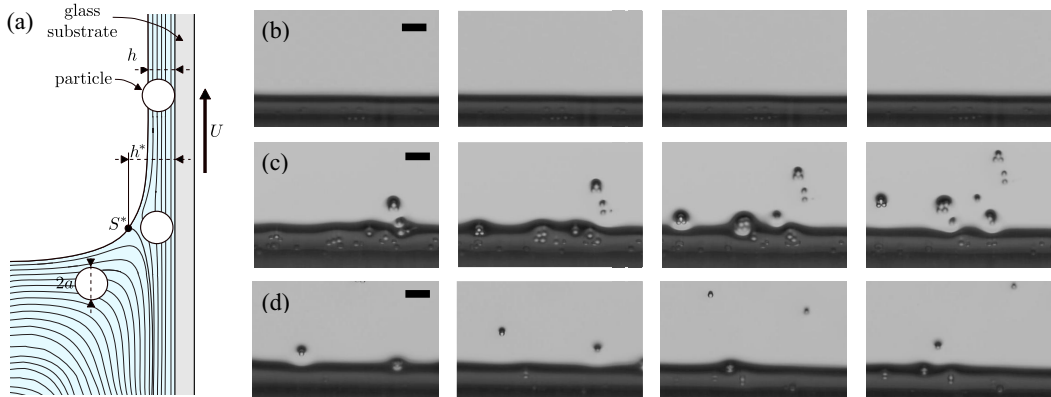


FIG. 1. (a) Schematic of the dip-coating experimental setup. Experimental visualizations of the three entrainment regimes during the withdrawal of the substrate from a suspension (2% of polystyrene particles of radius $a = 125 \mu\text{m}$ in AP 100). (b) Liquid only, (c) entrainment of clusters, and (d) entrainment of individual particles. The time increases from left to right. Scale bars are $500 \mu\text{m}$.

bottom of the plate after the withdrawal and we obtain the average fluid thickness h . In addition to the gravimetry methods used to measure the thickness of the liquid film in the pure silicone oil, we perform measurements of the film thickness using a light absorption method, similarly to Vernay *et al.* [34]. When the light passes through the coated liquid film, its absorption is proportional to the thickness of the film following the Beer-Lambert law of absorption. We first perform a careful calibration through samples of controlled thickness and determine that for the Sudan Red in the silicone oil used (AP 100), the intensity response matches the Beer-Lambert law of absorption $h = \log(I/I_0)/(\epsilon c)$.

III. RESULTS

A. Phenomenology

We begin by examining the entrainment of particles in the liquid film for different withdrawal velocities. We observe three entrainment regimes when increasing the withdrawal velocity U [Figs. 1(b)–1(d)]. At low withdrawal velocity, no particles are entrained in the film. The particles are trapped in the meniscus, which effectively acts as a capillary filter. At large withdrawal velocity, isolated particles are entrained in the liquid film and contaminate the substrate. The thickness of the liquid film increases locally around the particles, which modifies the properties and stability of the liquid coating. At intermediate velocity, clusters or aggregates of particles are entrained in the liquid film. The assembly of the particles, i.e., the formation of the clusters, takes place in the meniscus. Indeed, the meniscus traps individual particles. When the local density of particles is large enough, clusters form, cross the meniscus, and get entrained in the film. The withdrawal velocity at which clusters are first observed depends on the probability of the particles to assemble in the meniscus and thus on the volume fraction of the suspension and the withdrawal length. Based on these qualitative observations, the capillary filtration, which is responsible for trapping particles in the meniscus, occurs at low withdrawal velocity where it prevents contamination of the thin liquid film. This mechanism is not relevant at high withdrawal velocity.

B. Entrainment threshold

To better understand the physical mechanisms involved in capillary filtration and determine the conditions under which particles are not entrained in the liquid film, we carry out systematic

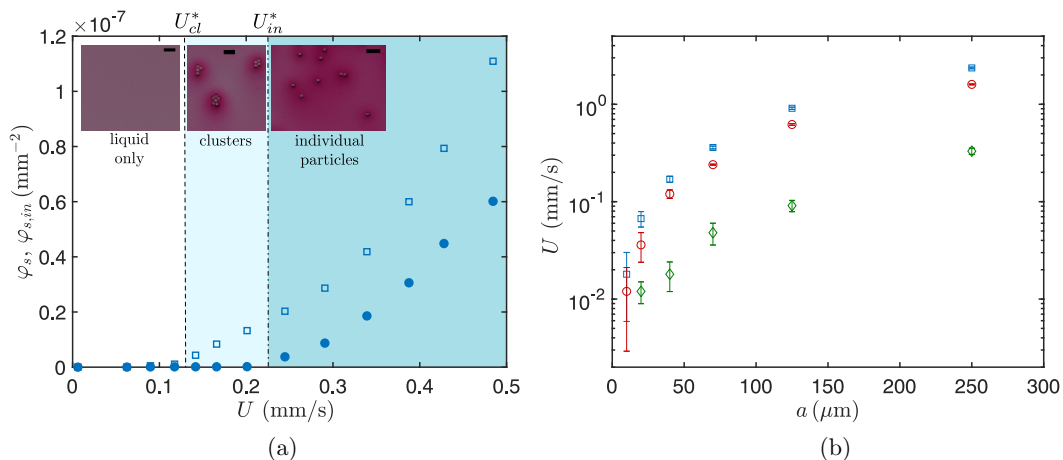


FIG. 2. (a) Evolution of the surface density of particles entrained φ_s (open blue rectangles) and individual particles entrained $\varphi_{s,in}$ (blue solid circles) when increasing the withdrawal velocity U for a suspension of polystyrene particles dispersed in silicone oil AP 100 ($\phi = 5\%$ and $a = 70 \mu\text{m}$). The vertical dashed line and dashed-dotted line show the threshold velocities for cluster entrainment U_{cl}^* and individual particle entrainment U_{in}^* , respectively. The insets illustrate the composition of the coated film in the different regimes. Scale bars are $500 \mu\text{m}$. (b) Threshold velocity U_{in}^* for the entrainment of individual particles when varying the radius of the particles a and the liquid phase: Silicone oil AP 100 (blue squares), AR 200 (red circles), and AP 1000 (green diamonds). The experiments are performed only for dilute suspensions, $\phi < 0.5\%$.

experiments varying the withdrawal speed and the properties of the suspension. Here, we consider a dilute suspension ($\phi < 5\%$). The experiment consists in increasing the withdrawal velocity while keeping other parameters fixed and recording the number of particles entrained per unit surface area of film [Fig. 2(a)]. We record the total number of particles per unit area φ_s and the total number of individual isolated particles $\varphi_{s,in}$, i.e., particles that are not in a cluster. At low withdrawal velocity, we observe that no particles are entrained in the liquid film whose thickness remains well predicted by the Landau-Levich law. Increasing the withdrawal velocity leads to a first transition at U_{cl}^* above which only clusters are entrained in the liquid film, and no individual particles are observed. Finally, increasing the withdrawal velocity further, beyond U_{in}^* , leads to the entrainment of individual particles. We first focus on the situation when individual particles are entrained in the liquid film, and we shall discuss later the entrainment of clusters. To focus on the individual particle regime, we consider very diluted suspensions ($\phi < 0.5\%$). Indeed, at low particle concentration, the probability to assemble clusters in the meniscus is low. The efficiency of the filtration process drops only slightly when clusters start being entrained, but then increase suddenly as isolated particles are entrained.

Using particles of different radii, we measure the threshold velocity U_{in}^* at which individual particles are entrained in the liquid film, and we show that the larger the particle is, the greater the threshold velocity is [Fig. 2(b)]. The capillary filtration is more efficient for large particles as they are trapped in the meniscus for a larger range of withdrawal velocity. The properties of the fluid also determine the efficiency of the capillary filtration. Using different oils, we vary the viscosity of the fluid. Increasing the viscosity of the fluid decreases the threshold velocity U_{in} for all particle sizes [Fig. 2(b)]. The less viscous liquid is the most efficient for the capillary filtration.

For dilute suspensions, the entrainment of particles depends on the thickness of the coated film. The thickness of liquid deposited on a plate withdrawn from a bath of Newtonian fluid scales with a power law of the capillary number $\text{Ca} = \eta U / \gamma$ in the limit of small capillary numbers, typically $\text{Ca} < 10^{-2}$ [32]. The thickness of the liquid layer h is uniform along the plate and follows the Landau-Levich-Deryaguin law (LLD law), $h = 0.94 \ell_c \text{Ca}^{2/3}$, where $\ell_c = \sqrt{\gamma / (\rho g)}$ is the capillary

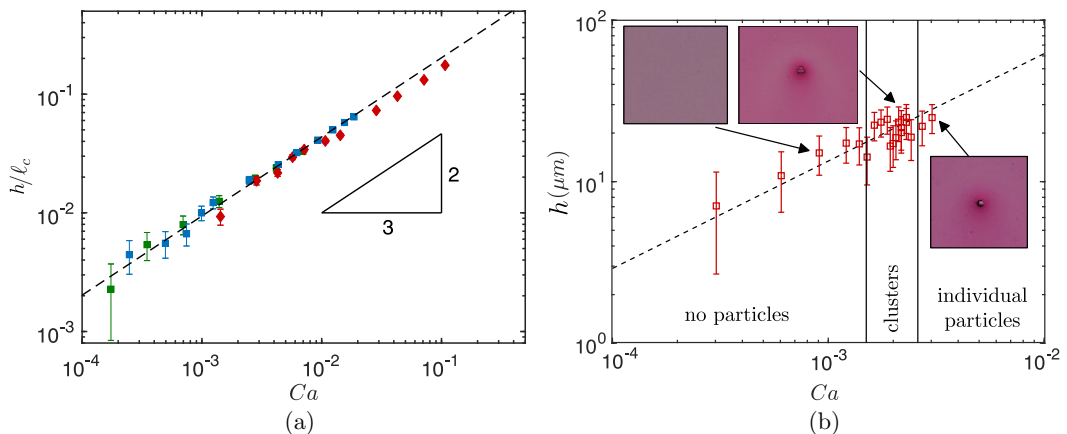


FIG. 3. (a) Rescaled thickness of the liquid film h/ℓ_c without particles for varying capillary number Ca and silicone oil AP 100 (green symbols), AR 200 (blue symbols), and AP 1000 (green symbols). The dotted line is the theoretical prediction $h/\ell_c = 0.94 Ca^{2/3}$. (b) Thickness of the liquid film when varying the capillary number and withdrawing the glass plate from a suspension of polystyrene particles in silicone oil (AP 100) with $\phi = 0.28\%$ and $a = 70 \mu\text{m}$ particles. The vertical lines indicate the three different regimes and the insets show typical film compositions on the plate.

length of the fluid. We performed dip-coating experiments with silicone oils, without particles, and measured the film thickness by classical gravimetry methods [12,26,32]. Our measurements are reported in Fig. 3(a) and show an excellent agreement with the classical LLD law in the range $Ca \in [10^{-4}, 2 \times 10^{-2}]$ for all silicone oils. For dilute suspensions, we will therefore use the LLD model to describe the thin film and the forces acting on the particles.

Experimentally, we observe that the presence of a small amount of particles does not modify significantly the thickness of the coating film sufficiently far from the particles [Fig. 3(b)]. Indeed, experiments performed with a diluted suspension ($\phi = 0.28\%$ of $2a = 140 \mu\text{m}$ particles in silicone oil AP 100) show that we recover the classic Landau-Levich law in all regimes, far from the particles, as reported in Fig. 3(b).

IV. DISCUSSION

A. Threshold of particle entrainment

The condition of filtration depends on the forces acting on a particle in the meniscus, the capillary, and viscous forces, as represented in Fig. 4(a). The viscous force is responsible for the entrainment of the particles in the liquid film whereas the capillary force which opposes the deformation of the air/liquid interface prevents the particles from entering the liquid film, hence leading to capillary filtration. Colosqui *et al.* suggested that a 2D particle is entrained when the thickness of the liquid film at the stagnation point h^* is larger than the particle size.

During the dip coating of a plate, the thickness at the stagnation point is given by $h^*/\ell_c = [3(h/\ell_c) - (h/\ell_c)^3/Ca]$ [3,35]. For a particle to be entrained in the liquid film, the viscous drag force on the particle needs to be larger than the resistive capillary force. An upper bound for the entrainment threshold is given by the condition $h^* > 2a$. Thus, the scaling for particle entrainment, with $h^* \simeq 3h = 2.82\ell_c Ca^{2/3}$, becomes

$$Ca^* = 0.59 Bo^{3/4}, \quad (2)$$

where $Bo = (a/\ell_c)^2$ is the Bond number. This condition is derived based on a geometrical criterion and is the same as the one suggested by Colosqui *et al.* [31]. The geometrical condition is equivalent

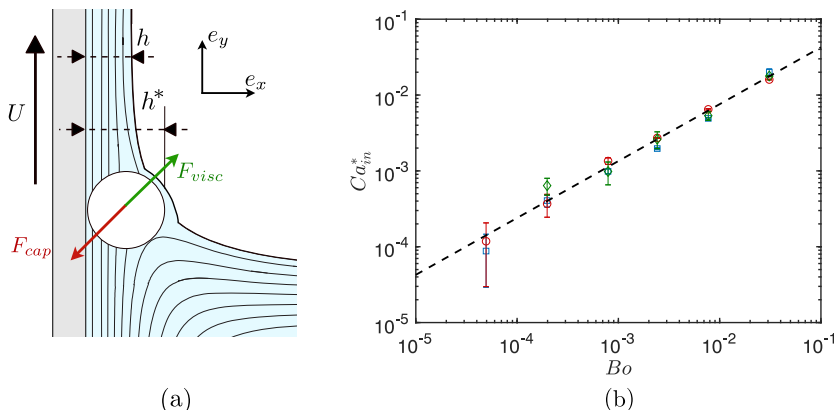


FIG. 4. (a) Schematic of the forces acting on a particle in the liquid meniscus. (b) Threshold capillary number Ca_{in}^* for individual particle entrainment in the liquid film. The symbols are the experimental results for different silicone oils (blue squares: AP 100; red circles: AR 200; green diamonds: AP 1000) and the dotted line is the scaling $Ca_{in}^* = 0.24 Bo^{3/4}$.

to assuming that the particle is entrained in the liquid film when the capillary force vanishes. For capillary numbers greater than Ca^* , the capillary force is not sufficient to filter out individual particles, i.e., to prevent them from being entrained in the liquid film.

Our experiments reveal that the scaling law captures the trend, as a $3/4$ power law of the Bond number, but the prefactor is not correct. In Fig. 4(b), we report the threshold value of the capillary number as a function of the Bond number for the experiments originally presented in Fig. 2(b). All the data points collapse on the line corresponding to the scaling law $Ca_{in}^* \propto Bo^{3/4}$, for Bo varying over three orders of magnitude. This power law is consistent with the model. The prefactor measured experimentally is equal to 0.24, and differs from the value obtained in the model. This difference likely comes from the condition that the capillary force has to vanish is too restrictive. This indicates that the force balance between the capillary effects and viscous force needs to be refined to predict accurately the condition of entrainment. As a quantitative model for the capillary force in the regime of large deformation of the meniscus is still missing, the experiments presented in this paper offer a method of choice to quantitatively determine the entrainment threshold.

B. Entrainment of clusters

In the previous section, we reported on the entrainment of individual particles in very dilute suspensions ($\phi < 0.5\%$). Depending on the particle volume fraction, and the length over which the plate is withdrawn from the suspension Δ , we also observe an intermediate regime in which clusters of particles are entrained. The clusters assemble in the meniscus and cross into the film for $Ca < 0.24 Bo^{3/4}$, before the entrainment of individual particles. The formation of clusters in the meniscus effectively decreases the efficiency of the filtration process. To determine the conditions of cluster formation and entrainment in the liquid film, we conduct withdrawal experiments with suspensions of $140\text{-}\mu\text{m}$ particles in the AP 100 silicone oil. For different volume fractions of particles in suspension $0.3\% < \phi < 5\%$, we measure the surface fraction of particles entrained in the liquid film φ_s over a constant withdrawal distance of the plate $\Delta = 33$ mm. We also measure the surface fraction of individual particles $\varphi_{s,in}$ [Figs. 5(a) and 5(b)]. We define two entrainment thresholds, one for the clusters and one for individual particles using $\varphi_{s,in}$ and $\varphi_s = \varphi_{s,cl} + \varphi_{s,in}$, where $\varphi_{s,cl}$ is the surface fraction of particles in clusters.

The results indicate that the threshold capillary number at which individual particles are entrained on the plate does not depend on the volume fraction ϕ of the suspension. For the suspensions used

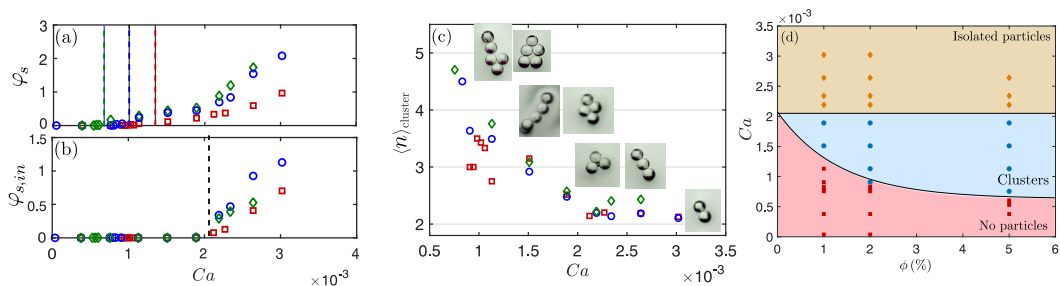


FIG. 5. Evolution of the surface density of (a) the total particles entrained φ_s and (b) only the individual particles entrained $\varphi_{s,in}$ when varying the capillary number Ca and for different volume fractions $\phi = 1\%$ (green diamonds), $\phi = 2\%$ (blue circles), and $\phi = 5\%$ (red squares). In (a) the colored dashed lines show the transition between the entrainment of liquid alone and the entrainment of particles in clusters. In (b) the vertical line shows the transition between the cluster regime and the individual particle regimes. (c) Mean size of the clusters entrained in the liquid film. The insets show different morphologies of clusters. (d) Diagram (ϕ , Ca) reporting the existence of the three regimes, liquid alone, clusters, and individual particles, obtained for $\Delta = 33$ mm and various volume fractions ϕ . The black lines are guides for the eye.

here, $Ca_{in}^* \simeq 2.2 \times 10^{-3}$ for all particle densities [Fig. 5(b)]. This result is consistent with the model presented above: Ca^* only depends on Bo , which is independent of ϕ .

In contrast, the threshold capillary number above which clusters are entrained in the liquid film decreases as the volume fraction of the suspension ϕ increases [Fig. 5(a)]. In this regime, the individual particles that are not able to enter the liquid film are joined by other particles being advected along streamlines toward the meniscus, thus forming clusters driven by capillary forces in the vicinity of the stagnation point [36–39]. The formation of clusters both distorts the interface locally and increases the viscous drag on the cluster. Above a certain velocity, when the probability of forming a cluster of a given size is sufficient, clusters are able to enter the film. The efficiency of the capillary filtration is therefore dependent upon the particle concentration. Indeed, for a given volume of suspension entrained, the number of particles trapped in the meniscus increases with the volume fraction of the suspension ϕ and the withdrawal length Δ , making this process time dependent. A greater number of particles can then assemble into clusters in the vicinity of the stagnation point during the withdrawal of the plate from the bath of suspension. It is important to note that the number of particles that can assemble in the meniscus not only depends on the volume fraction ϕ but also on the withdrawal length of the plate Δ . We report experiments performed with a constant withdrawal length $\Delta = 33$ mm, but increasing the value of Δ leads to more particles collected in the vicinity of the stagnation point and decreases the threshold capillary number for clusters entrainment. The trapping of particles in the meniscus not only increases the probability for particles to be in a cluster but it can also determine the size and shape of those clusters. Increasing the length also allows for more time for entrained particles to aggregate within the film, due to capillary forces.

We measure the average size of the clusters entrained on the substrate as a function of the capillary number Ca for different values of the volume fraction of the suspension ϕ . The results are reported in Fig. 5(c) and show that, on average, the larger the clusters are, the lower the capillary number at which they are entrained is. Large clusters are entrained far below the threshold value obtained for individual particles Ca_{in}^* . Indeed, clusters composed of four to five particles are entrained at capillary numbers that are equal to about half the threshold value to entrain isolated particles. The threshold capillary numbers obtained for clusters of different sizes are independent of the concentration of the suspension. Only the probability to assemble a cluster of n particles in the meniscus varies with ϕ . The quantitative prediction of the entrainment of a cluster, depending on its size and shape,

requires an analytical expression for the capillary force. Qualitatively, the clusters are composed of a single layer of particles. The presence of several particles in a cluster increases its surface area compared to single particles, hence increasing the viscous lubrication force, whereas the capillary force depends on the width of the cluster. This allows the cluster to overcome the capillary filtering mechanism induced by the meniscus at a smaller film thickness than individual particles. We also note that the amount of particles entrained on the plate for $Ca < Ca_{in}^*$ is much smaller than when the threshold $Ca \simeq 0.24 Bo^{3/4}$ is reached, as the majority of particles remain isolated in the meniscus for the volume fraction considered here [Fig. 5(a)].

Finally, we summarize our findings in a phase diagram of the three regimes as a function of the capillary number Ca and the volume fraction ϕ in Fig. 5(d). The threshold for individual particle entrainment, which is the main entrainment mechanism for very dilute suspensions, is independent of the volume fraction ϕ . However, for more concentrated suspensions, capillary filtration is limited by the formation of clusters which depends on the volume fraction ϕ and on the withdrawal length Δ . Therefore, a substrate withdrawn from a liquid bath containing particles is more likely to be contaminated at lower withdrawal velocities if the volume fraction of the suspension, or the amount of contaminants, is substantial.

C. Application to biological contamination

In a first approximation, the capillary filtration mechanism described here can be extended to biological organisms. The threshold capillary number or velocity is useful information to prevent the contamination of an object removed from a liquid bath containing dilute microorganisms. This filtration mechanism can be valuable in biological applications in which a probe is dipped in water containing bacteria or microalgae.

Biological species are usually very diluted in water, so we only consider the entrainment threshold obtained for the individual particles. Assuming the shape of biological organisms is spherical, we can use the relation obtained previously, $Ca_{in}^* \simeq 0.24 Bo^{3/4}$, which can be written in terms of dimensional quantities,

$$U^* = 0.24 \frac{\rho^{3/4} g^{3/4} \gamma^{1/4}}{\eta} a^{3/2}. \quad (3)$$

Water has a surface tension $\gamma = 72 \text{ mN m}^{-1}$, a density $\rho = 1000 \text{ kg m}^{-3}$, and a dynamic viscosity $\eta = 10^{-3} \text{ Pa s}$.

In Fig. 6 we plot the threshold velocities at which biological contaminants are expected to be entrained in the liquid film on the flat plate based on physical values found in the literature [40–47]. For microorganisms such as bacteria and parasites, the substrate needs to be pulled out of the polluted water at velocities smaller than $10^{-2} - 10^{-1} \text{ mm s}^{-1}$ to prevent contamination. For larger microorganisms such as phytoplankton and larvae, the threshold speed increases, to a few tens of centimeters per second. These threshold values, under which capillary filtration prevents contamination, can provide guidelines to operate probes and mixers and for rinsing processes in biological and industrial applications.

To obtain a better estimate of the threshold velocity at which biological particles will contaminate a substrate, the shape, the deformability, and the motility of the particles would need to be taken into account. However, the values derived for hard particles already give a good estimate of the threshold velocities for microorganisms. Indeed, we performed experiments with dilute suspensions of two different microorganisms in water at a usual volume fraction $\phi < 0.1\%$: *Chlamydomonas reinhardtii* and *Synechocystis sp.* PCC6803. An illustration of the results is reported in the inset of Fig. 6 and shows that below the expected threshold, the substrate is withdrawn from the polluted water with no microorganism. The thresholds obtained with these two microorganisms are in fair agreement with the theoretical prediction. The small discrepancies may be due to the shape, size distribution, and mechanical properties of the microorganisms. At velocity smaller than the expected threshold, the substrate is not contaminated by microorganisms.

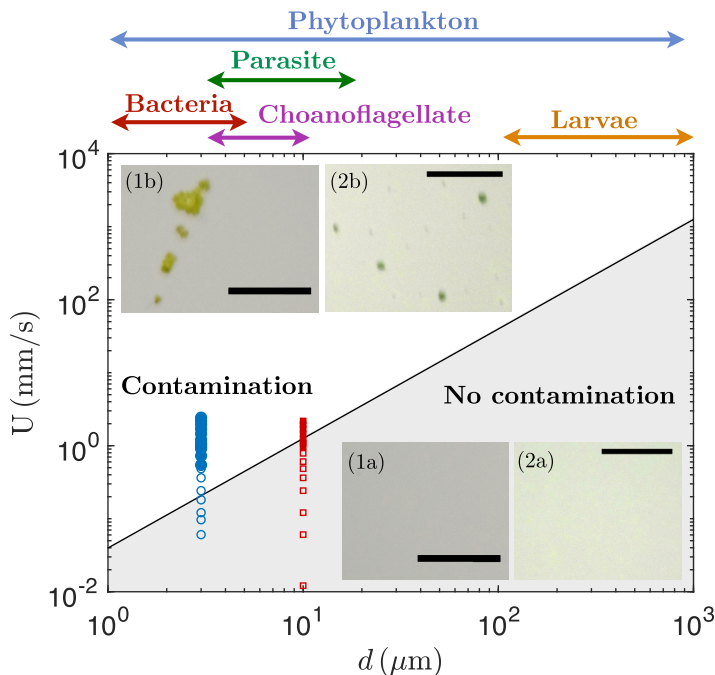


FIG. 6. Velocity threshold leading to the contamination of a substrate withdrawn from contaminated water (white region). In the gray region, the substrate is expected to be withdrawn from the polluted water without contamination owing to the capillary filtering mechanism. The black corresponds to Eq. (3). The arrow indicates the range of size of different biological organisms [40–45]. The solid symbols and the open symbols indicates contaminated and noncontaminated substrates, respectively. The blue circles are experiments with *Synechocystis sp.* PCC6803 and the red symbols are experiments with *Chlamydomonas reinhardtii*. The inset photographs are obtained from withdrawal experiments from suspensions of *Chlamydomonas reinhardtii* ($2a \sim 10 \mu\text{m}$) [(1a) and (1b)] and *Synechocystis sp.* PCC6803 ($2a \sim 3 \mu\text{m}$) [(2a) and (2b)]. At low withdrawal velocity, the microorganisms are not entrained: For (1a), $U = 0.36 \text{ mm s}^{-1}$, and for (2a), $U = 0.48 \text{ mm s}^{-1}$. At larger withdrawal velocity, the microorganisms contaminate the substrate: For (1b), $U = 2.18 \text{ mm s}^{-1}$, and for (2b), $U = 1.03 \text{ mm s}^{-1}$. The scale bars are $200 \mu\text{m}$.

V. CONCLUSION

During the withdrawal of a flat substrate from a liquid bath containing particles or biological microorganisms, the meniscus can effectively act as a capillary filter. This filtration method could be more effective than passive filters that clog over time, reducing their efficiency [48–51]. Below a given film thickness on the plate, the meniscus generates a strong capillary force at the stagnation point and prevents the large particles from being entrained in the liquid film and from contaminating the substrate. When the thickness at the stagnation point is smaller than a fraction of the particle size, i.e., when the capillary number is smaller than a threshold value $\text{Ca}^* = 0.24 \text{Bo}^{3/4}$, the particles are trapped in the liquid bath. For large volume fractions, typically larger than a few percent, some trapped particles assemble into clusters that can be entrained in the liquid film. The capillary filtering mechanism described here should apply to a wide range of quasispherical particles, including biological microorganisms. Besides, the threshold dependence on the particle size could allow the sorting of particle by size [52].

ACKNOWLEDGMENTS

We thank H. A. Stone, C. Colosqui, and G. M. Homsy for important discussions and P. Brunet for providing the *Chlamydomonas reinhardtii* and the *Synechocystis sp.* PCC6803. This work was supported by the French ANR (project ProLiFic ANR-16-CE30-0009) and partial support from a CNRS PICS Grant No. 07242.

-
- [1] E. Rio and F. Boulogne, Withdrawing a solid from a bath: How much liquid is coated? *Adv. Colloid Interface Sci.* **247**, 100 (2017).
 - [2] K. J. Ruschak, Coating flows, *Annu. Rev. Fluid Mech.* **17**, 65 (1985).
 - [3] L. Landau and B. Levich, Dragging of a liquid by a moving plate, *Acta Physicochim. USSR* **17**, 42 (1942).
 - [4] B. Deryagin and A. Titievskaya, Experimental study of liquid film thickness left on a solid wall after receding meniscus, *Dokl. Akad. Nauk USSR* **50**, 307 (1945).
 - [5] D. Quéré, Fluid coating on a fiber, *Annu. Rev. Fluid Mech.* **31**, 347 (1999).
 - [6] H. C. Mayer and R. Krechetnikov, Landau-Levich flow visualization: Revealing the flow topology responsible for the film thickening phenomena, *Phys. Fluids* **24**, 052103 (2012).
 - [7] M. Maillard, J. Boujlel, and P. Coussot, Solid-Solid Transition in Landau-Levich Flow with Soft-Jammed Systems, *Phys. Rev. Lett.* **112**, 068304 (2014).
 - [8] M. Maillard, J. Boujlel, and P. Coussot, Flow characteristics around a plate withdrawn from a bath of yield stress fluid, *J. Non-Newtonian Fluid Mech.* **220**, 33 (2015).
 - [9] C.-W. Park, Effects of insoluble surfactants on dip coating, *J. Colloid Interface Sci.* **146**, 382 (1991).
 - [10] A. Q. Shen, B. Gleason, G. H. McKinley, and H. A. Stone, Fiber coating with surfactant solutions, *Phys. Fluids* **14**, 4055 (2002).
 - [11] R. Krechetnikov and G. M. Homsy, Experimental study of substrate roughness and surfactant effects on the Landau-Levich law, *Phys. Fluids* **17**, 102108 (2005).
 - [12] R. Krechetnikov and G. M. Homsy, Surfactant effects in the Landau-Levich problem, *J. Fluid Mech.* **559**, 429 (2006).
 - [13] J. Delacotte, L. Montel, F. Restagno, B. Scheid, B. Dollet, H. A. Stone, D. Langevin, and E. Rio, Plate coating: Influence of concentrated surfactants on the film thickness, *Langmuir* **28**, 3821 (2012).
 - [14] M. Ghosh, F. Fan, and K. J. Stebe, Spontaneous pattern formation by dip coating of colloidal suspensions on homogeneous surfaces, *Langmuir* **23**, 2180 (2007).
 - [15] S. Watanabe, K. Inukai, S. Mizuta, and M. T. Miyahara, Mechanism for stripe pattern formation on hydrophilic surfaces by using convective self-assembly, *Langmuir* **25**, 7287 (2009).
 - [16] D. D. Brewer, T. Shibuta, L. Francis, S. Kumar, and M. Tsapatsis, Coating process regimes in particulate film production by forced-convection-assisted drag-out, *Langmuir* **27**, 11660 (2011).
 - [17] R. J. Furbank and J. F. Morris, An experimental study of particle effects on drop formation, *Phys. Fluids* **16**, 1777 (2004).
 - [18] M. Buchanan, D. Molenaar, S. de Villiers, and R. M. L. Evans, Pattern formation in draining thin film suspensions, *Langmuir* **23**, 3732 (2007).
 - [19] C. Bonnoit, T. Bertrand, E. Clément, and A. Lindner, Accelerated drop detachment in granular suspensions, *Phys. Fluids* **24**, 043304 (2012).
 - [20] M. Z. Miskin and H. M. Jaeger, Droplet formation and scaling in dense suspensions, *Proc. Natl. Acad. Sci. USA* **109**, 4389 (2012).
 - [21] L. A. Lubbers, Q. Xu, S. Wilken, W. W. Zhang, and H. M. Jaeger, Dense Suspension Splat: Monolayer Spreading and Hole Formation after Impact, *Phys. Rev. Lett.* **113**, 044502 (2014).
 - [22] W. Mathues, C. McIlroy, O. G. Harlen, and C. Clasen, Capillary breakup of suspensions near pinch-off, *Phys. Fluids* **27**, 093301 (2015).
 - [23] J. Kim, F. Xu, and S. Lee, Formation and Destabilization of the Particle Band on the Fluid-Fluid Interface, *Phys. Rev. Lett.* **118**, 074501 (2017).
 - [24] Y. E. Yu, S. Khodaparast, and H. A. Stone, Armoring confined bubbles in the flow of colloidal suspensions, *Soft Matter* **13**, 2857 (2017).

- [25] Y. E. Yu, S. Khodaparast, and H. A. Stone, Separation of particles by size from a suspension using the motion of a confined bubble, *Appl. Phys. Lett.* **112**, 181604 (2018).
- [26] M. Ouriemi and G. M. Homsy, Experimental study of the effect of surface-absorbed hydrophobic particles on the Landau-Levich law, *Phys. Fluids* **25**, 082111 (2013).
- [27] A. Gans, E. Dressaire, B. Colnet, G. Saingier, M. Z. Bazant, and A. Sauret, Dip-coating of suspensions, *Soft Matter* **15**, 252 (2019).
- [28] S. Palma and H. Lhuissier, Dip-coating with a particulate suspension, *J. Fluid Mech.* **869**, R3 (2019).
- [29] J. C. T. Kao and A. E. Hosoi, Spinodal decomposition in particle-laden Landau-Levich flow, *Phys. Fluids* **24**, 041701 (2012).
- [30] J. C. T. Kao, A. L. Blakemore, and A. E. Hosoi, Pulling bubbles from a bath, *Phys. Fluids* **22**, 061705 (2010).
- [31] C. E. Colosqui, J. F. Morris, and H. A. Stone, Hydrodynamically Driven Colloidal Assembly in Dip Coating, *Phys. Rev. Lett.* **110**, 188302 (2013).
- [32] M. Maleki, M. Reyssat, F. Restagno, D. Quéré, and C. Clanet, Landau-Levich menisci, *J. Colloid Interface Sci.* **354**, 359 (2011).
- [33] H. Lamb, *Hydrodynamics* (Cambridge University Press, Cambridge, U.K., 1993).
- [34] C. Vernay, L. Ramos, and C. Ligoure, Free radially expanding liquid sheet in air: Time- and space-resolved measurement of the thickness field, *J. Fluid Mech.* **764**, 428 (2015).
- [35] R. Krechetnikov, On application of lubrication approximations to nonunidirectional coating flows with clean and surfactant interfaces, *Phys. Fluids* **22**, 092102 (2010).
- [36] P. A. Kralchevsky and K. Nagayama, Capillary interactions between particles bound to interfaces, liquid films and biomembranes, *Adv. Colloid Interface Sci.* **85**, 145 (2000).
- [37] D. Vella and L. Mahadevan, The “Cheerios effect”, *Am. J. Phys.* **73**, 817 (2005).
- [38] K. J. Stebe, E. Lewandowski, and M. Ghosh, Oriented assembly of metamaterials, *Science* **325**, 159 (2009).
- [39] M. Cavallaro, L. Botto, E. P. Lewandowski, M. Wang, and K. J. Stebe, Curvature-driven capillary migration and assembly of rod-like particles, *Proc. Natl. Acad. Sci. USA* **108**, 20923 (2011).
- [40] J. Dervaux, M. C. Resta, and P. Brunet, Light-controlled flows in active fluids, *Nat. Phys.* **13**, 306 (2017).
- [41] J. S. Guasto, R. Rusconi, and R. Stocker, Fluid mechanics of planktonic microorganisms, *Annu. Rev. Fluid Mech.* **44**, 373 (2012).
- [42] G. L. Miño, M. A. R. Koehl, N. King, and R. Stocker, Finding patches in a heterogeneous aquatic environment: ph-taxis by the dispersal stage of choanoflagellates, *Limnol. Oceanogr. Lett.* **2**, 37 (2017).
- [43] R. Rusconi, J. S. Guasto, and R. Stocker, Bacterial transport suppressed by fluid shear, *Nat. Phys.* **10**, 212 (2014).
- [44] R. Stocker, Marine microbes see a sea of gradients, *Science* **338**, 628 (2012).
- [45] G. Vesey, P. Hutton, A. Champion, N. Ashbolt, K. L. Williams, A. Warton, and D. Veal, Application of flow cytometric methods for the routine detection of cryptosporidium and giardia in water, *Cytometry* **16**, 1 (1994).
- [46] S. Jana, A. Eddins, C. Spoon, and S. Jung, Somersault of paramecium in extremely confined environments, *Sci. Rep.* **5**, 13148 (2015).
- [47] W. M. Durham and R. Stocker, Thin phytoplankton layers: Characteristics, mechanisms, and consequences, *Annu. Rev. Marine Sci.* **4**, 177 (2012).
- [48] A. Lenshof and T. Laurell, Continuous separation of cells and particles in microfluidic systems, *Chem. Soc. Rev.* **39**, 1203 (2010).
- [49] A. Sauret, E. C. Barney, A. Perro, E. Villermaux, H. A. Stone, and E. Dressaire, Clogging by sieving in microchannels: Application to the detection of contaminants in colloidal suspensions, *Appl. Phys. Lett.* **105**, 074101 (2014).
- [50] E. Dressaire and A. Sauret, Clogging of microfluidic systems, *Soft Matter* **13**, 37 (2017).
- [51] A. Sauret, K. Somszor, E. Villermaux, and E. Dressaire, Growth of clogs in parallel microchannels, *Phys. Rev. Fluids* **3**, 104301 (2018).
- [52] B. M. Dincau, M. Z. Bazant, E. Dressaire, and A. Sauret, Capillary sorting of particles by dip coating (unpublished).