



MIT CAREERS OFFICE

Welcome to the *MIT Careers Office* report on the initial post-graduation plans of Class of 2006, based on responses from 74% of undergraduate and graduate students. The findings, along with anecdotal accounts and responses to our 2006 Employer Survey, indicate the versatility of an MIT education, irrespective of major. MIT graduates are seen as assets in a wide range of organizations, fields and functions. This breadth corresponds with their diverse career interests and aspirations.

Several of this year's findings are striking in the extent to which they show our students developing and using career-related skills and resources. First, 72% of graduating seniors reported doing internships, 45% through the Careers Office's Freshman/Alumni Internship Program, the School of Engineering's Undergraduate Practice Opportunities Program and departmental internship programs. This suggests that students want to discover how the MIT curriculum, and their own talents and interests, relate to opportunities in the wider world. Additionally, hands-on internship opportunities assist them in developing life skills that prepares them for life beyond MIT. Secondly, 75% of 2006 graduates used the services and programs of the Careers Office. This is a very high number when one considers that the 48% of undergraduates going on to graduate school and the 37% of PhDs taking academic positions or postdocs, would have been more inclined to use their academic department rather than the Careers Office. Finally, since networking is such an invaluable lifetime skill, it is noteworthy that over 56% of graduates found their jobs through some form of networking (career fairs, professional conferences, Careers Office contacts, networking events.)

The Graduating Student Survey has been available online since 2002. We welcome your questions, suggestions and requests, with the goal of producing as useful a report as possible.

Best regards,

Shonool Malik
Interim Director, MIT Careers Office



MIT CAREERS OFFICE

Welcome to the 2006 MIT Careers Office Annual Graduating Student Survey Report.

Please take a moment to learn more about the survey and the data we collect and present.

PURPOSE:

The purpose of the Graduating Student Survey (GSS) is to promote an accurate understanding of the immediate post-graduation plans of all (undergraduate to PhD) graduating MIT students and to provide data for related career issues.

METHOD:

The GSS is a completely voluntary web-based survey. The survey was emailed as a link multiple times throughout the late spring and early summer in an effort to capture as much of the graduating student population as possible. Altogether, 1550 (or 74%) June 2006 graduating MIT students participated in the 2006 Survey. The 74% response rate represents a 1% increase over the 2005 Survey.

RESULTS:

All data are presented anonymously in aggregate form. Due to the variety and various levels of MIT degrees granted, the majority of statistics presented are related to specific subsets of the population (e.g., undergraduate, PhD, major, etc.) and are labeled accordingly. This is done to provide more meaningful and accurate data. Any data not labeled should be assumed to represent the entire sample.

The majority of results are presented in table format for ease of reading and comparison. Many tables contain empty cells. This is for two reasons; first, not all majors offer all types of degrees, and second, fewer than two students from that major and degree level responded to the survey question.

The remainder of this report presents the data that we collect and analyze. We highly recommend that you start with the Frequently Asked Questions, which highlight our most common requests for information.

The MITCO Data Committee
John Nonnamaker
Portia Rivera
Bill Rivers



MIT CAREERS OFFICE

2006 MIT POST GRADUATION STATISTICS*

*Based upon 1550 responses (74%) to the June 2006 Graduating Student Survey

FREQUENTLY ASKED QUESTIONS

WHAT PERCENTAGE OF UNDERGRADUATE, MASTERS & PhD STUDENTS GO ON TO GRADUATE/PROFESSIONAL SCHOOL, WORK OR OTHER?*

Degree	Graduate/Professional School	Work	Other	Response Rate
SB	48%	42%	10%	78%
SM	29%	52%	19%	68%
MEng	15%	76%	9%	78%
MBA	2%	87%	11%	68%
PhD	2%	90%	8%	78%

*Other includes continuing my studies (2nd bachelors degree), internship, taking time off, traveling, deciding between fields, public service, still looking for a job, undecided & other

WHAT PERCENTAGE OF PhDs GO INTO INDUSTRY, GOVERNMENT, ACADEMIA, POST-DOCS, CONTINUE THEIR EDUCATION, OR OTHER?

Industry, Government, or Business	Academia	Post-Doctoral Fellowships	Continuing Education	Other
53%	13 %	24%	2%	8%

WHICH EMPLOYERS HIRED THE MOST MIT GRADUATES?

Employer	# of Hires
MIT	20
Goldman Sachs	20
McKinsey	19
Boston Consulting Group	16
Microsoft	14
Morgan Stanley	13
Lehman Brothers	13
Bain	13
JP Morgan	12
Google	12
IBM	11
Intel	8
Oracle	8
Boeing	8
Credit Suisse	8
Booz Allen	7
Johnson & Johnson	6
Deutsche Bank	6

**HOW MANY EMPLOYERS RECRUITED THROUGH THE MIT CAREERS OFFICE
IN 2005-2006?: 427**

**WHAT WAS THE AVERAGE SALARY/BONUS (for those receiving bonuses) OF
WORKING MIT GRADUATES?**

SB:	\$ 59,072 / \$ 8,697
MEng:	\$ 80,074 / \$ 10,524
SM:	\$ 81,979 / \$ 13,788
MBA:	\$110,339 / \$ 30,583
PhDs Going Into Acad. Post-Docs:	\$ 44,532 / \$ 4,083
PhDs Going Into Ind Post-Docs:	\$ 58,343 / \$ 3,000
PhDs Going Into Industry:	\$ 92,308 / \$ 12,100
PhDs Going Into Academia:	\$104,039 / \$ 15,518

HOW DID GRADUATES FIND THEIR JOBS?

(Students could check all that applied)

On Campus Recruiting	42%
Networking	37%
Applied Directly to Employer	21%
Internship Led to Job	16%
Career Fair	14%
Through Their Department	10%
Replied to Advertising	8%
Professional Conference	3%
Contacts Through MITCO	2%
Founded Company	1%

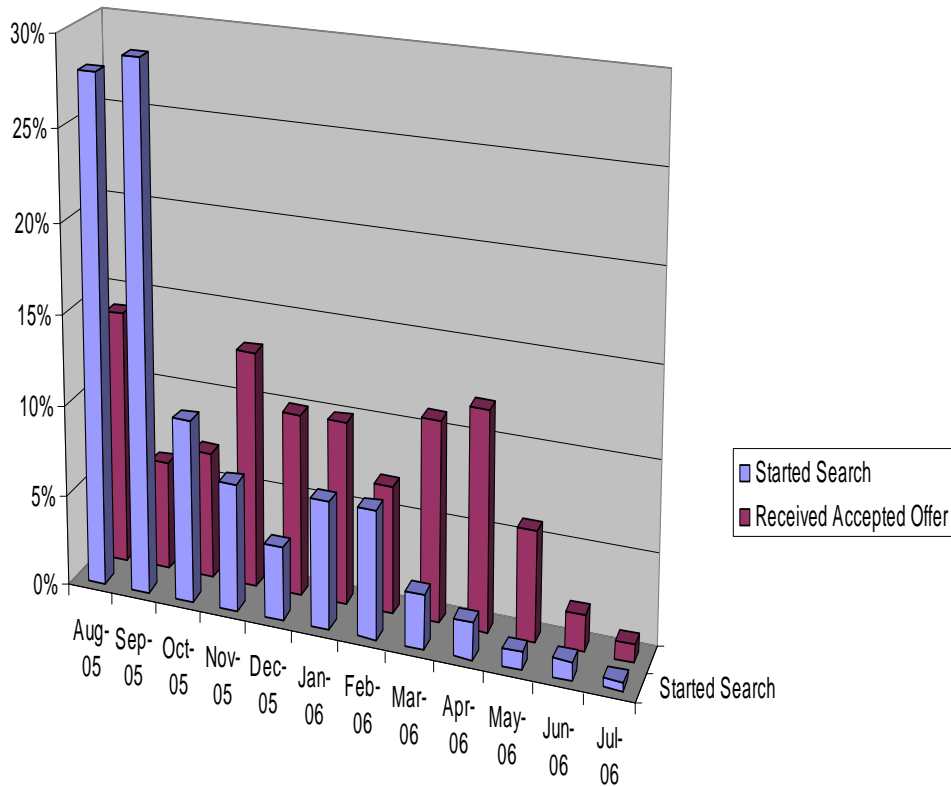
**WHAT IS THE MEAN, MODE, MEDIAN, AND RANGE OF JOB
APPLICATIONS/INTERVIEWS/JOB OFFERS?**

	Mean	Mode	Median	Range
Job Applications	11	15	7	0-100
Job Interviews	7	15	5	0-100
Job Offers	3	2	2	1-11

**WHEN DID WORKING GRADUATES BEGIN THEIR JOB SEARCH AND RECEIVE
THE JOB OFFER THEY ACCEPTED?**

Month	Started Job Search	Received Job Offer Accepted
August 2005	28%	14%
September 2005	29%	6%
October 2005	10%	7%
November 2005	7%	13%
December 2005	4%	10%
January 2006	7%	10%
February 2006	7%	7%
March 2006	3%	11%
April 2006	2%	12%
May 2006	1%	6%
June 2006	1%	2%
July 2006	.5%	1%

When Did 2006 MIT Working Graduates Begin Their Job Search and Receive Their Accepted Offer



WHAT WERE THE TOP US LOCATIONS FOR WORKING GRADUATES?

Massachusetts	184
New York	142
California	97
Washington	24
Virginia	24
Texas	21
Illinois	20
Washington DC	18
New Jersey	15
Connecticut	11
Maryland	11

WHAT WERE THE TOP INTERNATIONAL LOCATIONS FOR WORKING GRADUATES?

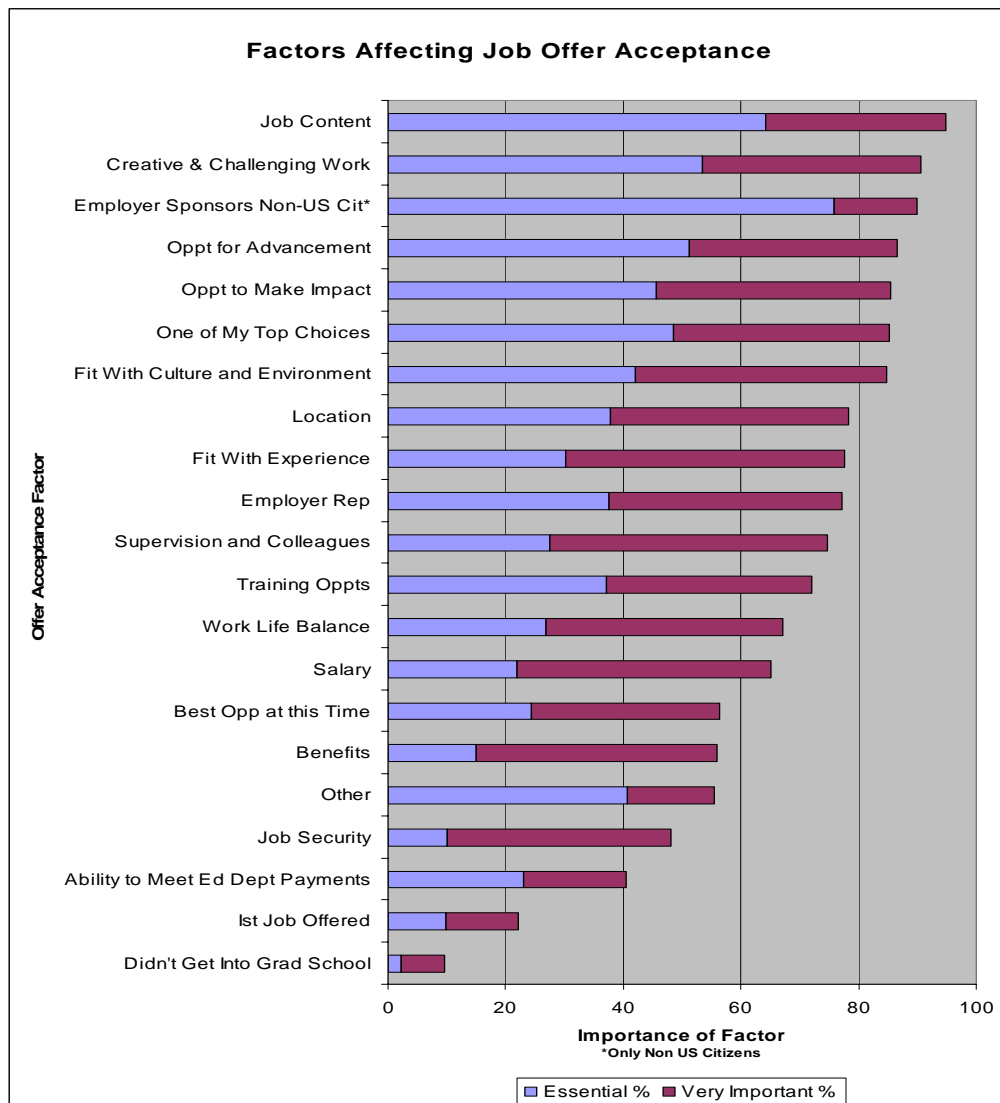
United Kingdom	14
Japan	8
Korea	6
Hong Kong	6
Brazil	6
Germany	4
Singapore	3

WHAT FACTORS CONTRIBUTED MOST TO JOB OFFER ACCEPTANCE?

(On a scale of 1 to 4, 1 being essential, 4 being not important)

Job Content	1.41
Creative & Challenging Work	1.57
Opportunity for Career Advancement	1.64
Employer is One of Top Choices	1.71
Opportunity to Make an Impact	1.72
Fit with Culture/Environment	1.74
Location	1.86
Reputation of Employer	1.87
Training/Educational Opportunities	1.94
Fit with Experience & Skills	1.96
Supervision	2.02
Job Flexibility & Work Balance	2.10
Salary	2.17
Benefits	2.36
Best Opportunity at This Time	2.37
Job Security	2.56
Employer Sponsors non-US Citizens	2.61*
Ability to meet my expected student loan	2.71
First Job Offered	3.16
Didn't Get Into Grad School	3.74

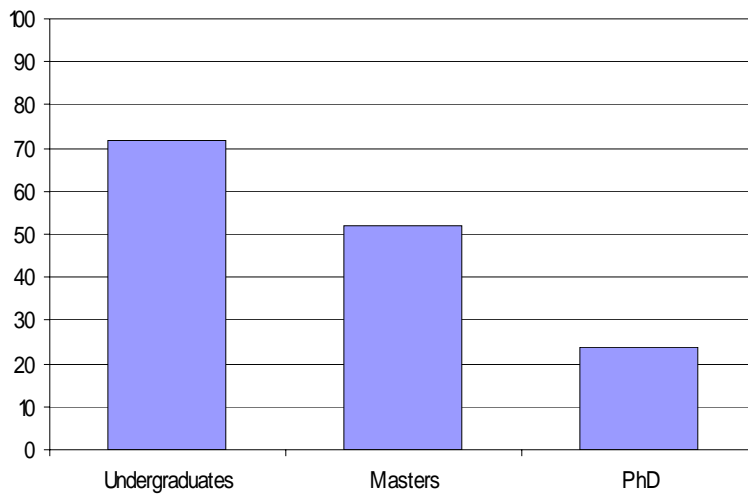
*For International Students 1.40 (2nd only to Job Content at 1.36)



WHAT PERCENTAGE OF UNDERGRADUATE, MASTERS & PhD STUDENTS COMPLETED AN INTERNSHIP WHILE IN THEIR CURRENT PROGRAM?

Undergraduates	72%
Masters	52%
PhD	24%

Internship Completion by Degree Level



WHAT TYPE OF INTERNSHIPS DID GRADUATING STUDENTS COMPLETE WHILE IN THEIR CURRENT PROGRAM?

Type of Internship	Number of Students
On My Own	569
Through My Department	289
UPOP	142
F/ASIP	44

WHAT WERE THE TOP GRADUATE/PROFESSIONAL SCHOOL DESTINATIONS FOR GRADUATES?

School	# of Students Matriculating
MIT	176
Harvard University	32
Stanford University	19
University of California – Berkeley	10
Princeton	8
University of Michigan	6
University of Pennsylvania	5
Columbia, Yale, Duke	4
Georgia Tech, Cal Tech, Cambridge	3

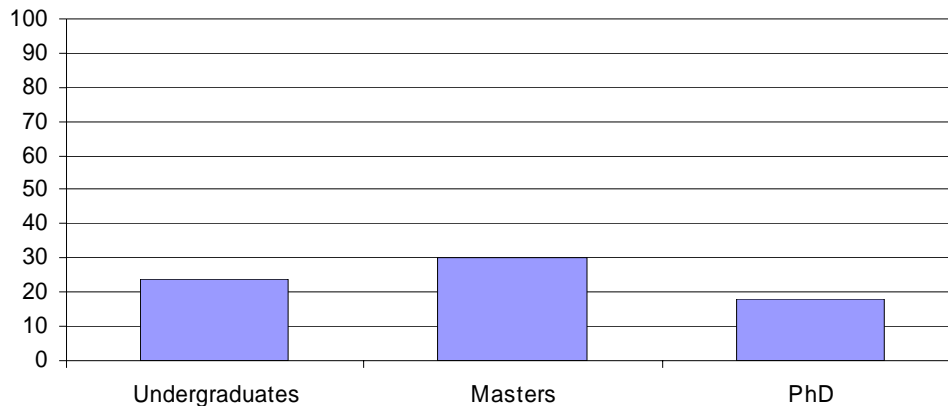
WHAT WAS THE MEAN, MODE, MEDIAN, AND RANGE OF GRADUATE/PROFESSIONAL SCHOOL APPLICATIONS/ACCEPTANCES?

	Mean	Mode	Median	Range
Graduate School Applications	5	1	4	1-15
Graduate School Acceptances	3	1	2	1-14

WHAT WAS THE PERCENTAGE OF GRADUATES WITH INTERNATIONAL EDUCATIONAL EXPERIENCE?

	YES	NO	DON'T KNOW
Undergraduate	24%	76%	0
Masters	30%	68%	2%
PhD	18%	81%	0

Percentage of Graduates With International Educational Experience



WHAT PERCENTAGE OF WORKING GRADUATES FOUND JOBS RELATED TO THEIR MAJORS?

	YES	NO	DON'T KNOW
Undergraduate	68%	26%	6%
Masters	91%	6%	4%
PhD	93%	6%	1%

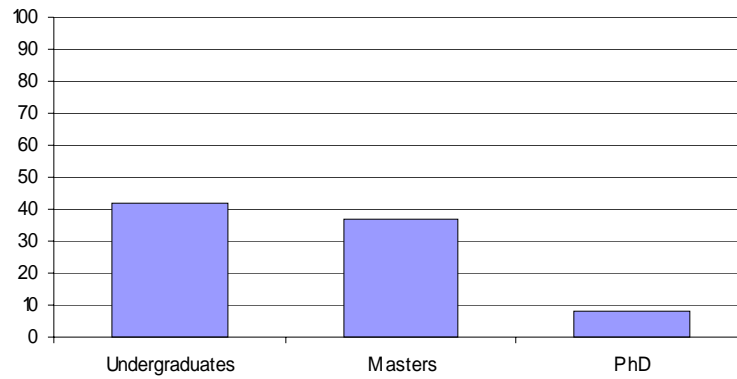
HOW REPRESENTATIVE WAS THE 2006 SURVEY SAMPLE?

	Survey Sample		All June Graduates	
	Female	International	Female	International
Undergraduate	46%	8%	44%	8%
Masters	28%	33%	28%	35%
PhD	25%	38%	24%	41%

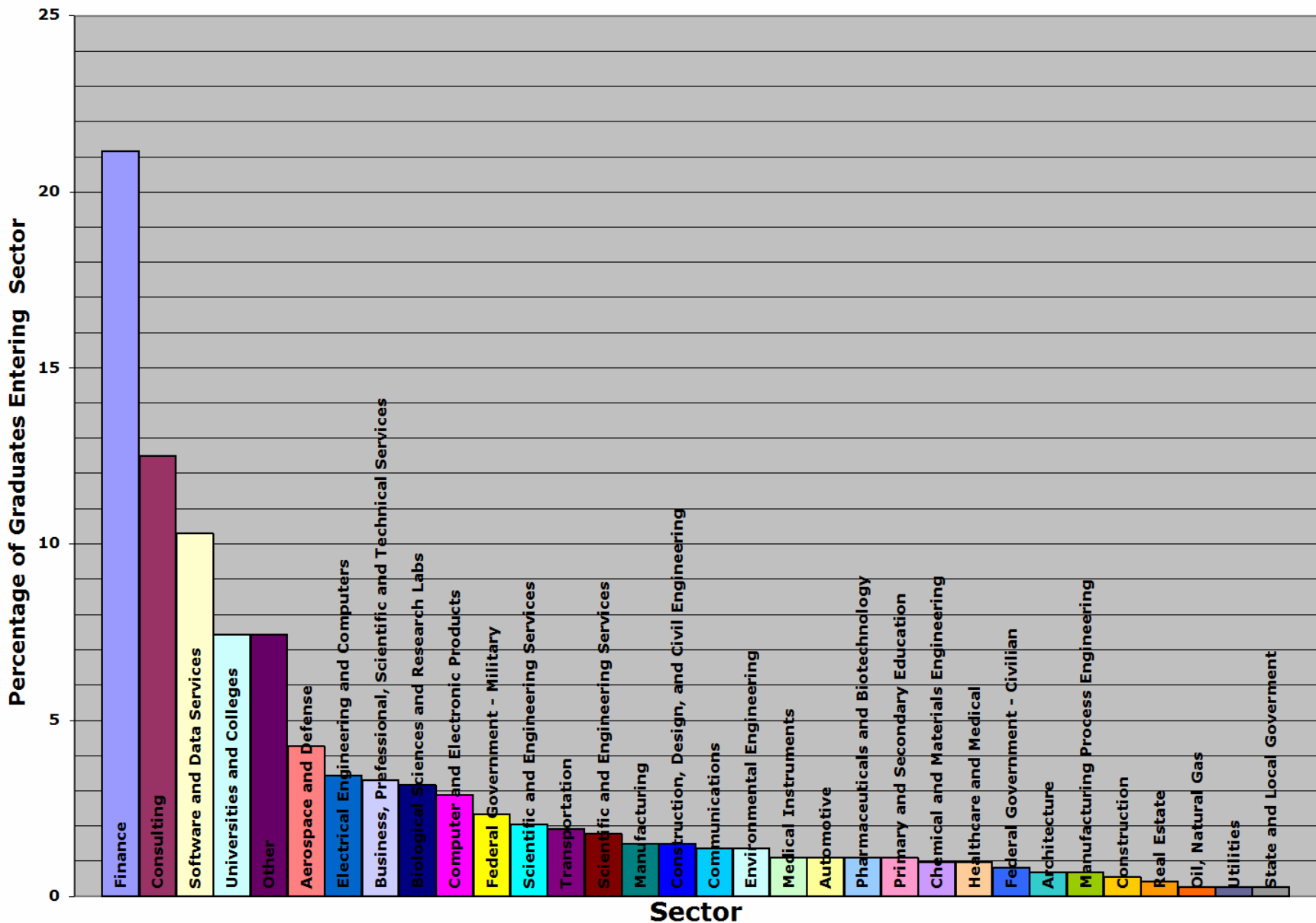
WHAT PERCENTAGE OF WORKING GRADUATES TOOK JOBS IN FINANCE AND CONSULTING?

Degree Level	Finance	Consulting	Finance & Consulting
SB	31%	11%	42%
Masters	20%	17%	37%
PhD	6%	2%	8%
All Degree Levels	21%	12.5%	33.5%

Percentage of Graduates in Finance & Consulting



What Sectors Did June 2006 MIT Working Graduates Enter?



2006 Undergraduate Employers by Department

Course (Course Number)	Employers
Civil & Environmental Engineering (1)	GZA Geoenvironmental Inc, Langan Engineering, Lehman Brothers, Malcolm Pirnie, Suffolk Construction
Mechanical Engineering (2)	Apple, Arizona Diamondbacks, Bear Stearns, Bluefin Robotics Corporation, Boeing Company, Booz Allen Hamilton, Cordis Corporation, CRA International, CYTYC Corp., Deutsche Bank, Dominion Engineering, Inc, Guidant, Hitachi Consulting, IBM JP Morgan Chase, KLA-Tencor, Lehman Brothers, Lexmark International, Metis Design Corp., Morgan Stanley, Novellus, Orbital Sciences, Raytheon, Shell Oil, SIG, United States Air Force, United States Marine Corps, United States Navy
Materials Science and Engineering (3)	A123 Systems, Bain & Co., Cushman & Wakefield, Global Prior Art Inc., Inductis, Inc., Morgan Stanley, Raytheon, Wyoming.com
Architecture (4)	Heller Manus Architects, Steve & Barry's University Sportswear
Chemistry (5)	Endeca, ENVIRON, Sensor Technologies
EECS (6)	Avalere, Avenue A Razorfish, Bain and Company, Bloomberg, Bose, Boeing, Boston Consulting Group, Credit Suisse, Dagli Trading Ltd., DC Energy, Fannie Mae, Fidelity Investments, Funded Software Startup, Goldman Sachs, Google, Hewlett Packard, IBM Business Consulting, J and F Technologies, Jane Street Capital, JP Morgan, Lehman Brothers, Linear Technology Corporation, Microsoft, Morgan Stanley, Northrop Grumman Space Technology, Oracle, SIG, Stormforge Software / BiogenIdec, Stroud Consulting, Susquehanna International Group, Teradyne, TriTek Solutions, Vecna Technologies Inc, US Government
Biology (7)	DE Shaw Research and Development, Massachusetts General Hospital, National Institutes of Health, PA Consulting, Putnam Associates, SKP, UCLA
Physics (8)	Agency for Science, Technology and Research, Bain & Company, Boston Teaching Residency, NIH, US Air Force
Brain and Cognitive Sciences (9)	Children's Hospital, Massachusetts General Hospital, Massachusetts Institute of Technology, University of Maryland, Baltimore
Chemical Engineering (10)	Accenture, Arctic Slope Regional Corporation, Beth Israel Deaconess, BNP Paribas, Health Advances, IBM, JPMorgan, Lehman Brothers, PA Consulting, The Hudson River Group

2006 Undergraduate Employers by Department Continued

Urban Studies and Planning (11)	
EAPS (12)	Jet Propulsion Laboratories
Ocean Engineering (13)	Johns Hopkins Applied Physics Lab
Economics (14)	Analysis Group, General Electric Global Research Center, Goldman Sachs, HSBC, JP Morgan, Morgan Stanley, NERA, Putnam Associates, Wachovia
Management (15)	AQR Capital Management, ARES, Boston Consulting Group, Boston Public School System, Citadel, Citigroup, Credit Suisse, D.E. Shaw, Deloitte Consulting LLP, Deutsche Bank, Goldman Sachs, IBM, IDEO, JPMorgan, Langer Lab, Lehman Brothers, Liz Claiborne Inc., Mercer Oliver Wyman, Monitor Group, Morgan Stanley, NBC (National Broadcasting Company) part of General Electric, PA Consulting, Susquehanna, Teach For America
Aeronautics and Astronautics (16)	Boeing, Booz Allen Hamilton, Citigroup, Credit Suisse, Department of the United States Navy, Formulatrix Inc., HMMH Inc, Kwangju Foreign School, Lockheed Martin, McKinsey & Company, Monitor Group, Moody's Investors Service, Northrop Grumman Space Technology, Raytheon, Stroud Consulting, The Boeing Company, United States Navy - Naval Reactors, US Air Force
Political Science (17)	Analysis Group, Inc., Joint Warfare Analysis Center, Systems Planning and Analysis, Inc.
Mathematics (18)	Applied Predictive Technologies, Athena Health, Banc of America, Deutsche Bank, Goldman Sachs, JP Morgan Chase, Lehman Brothers, Mayo, Milliman, MIT Lincoln Laboratory, The Monitor Group, Pixel Liberation Front, Pyramis, SH&E Consulting, Susquehanna International Group, UBS Investment Bank
Humanities (21)	ARES, E*TRADE Financial, Old North Church, Digitas, Electronic Arts, FactSet, Goldman Sachs, MATCH (Media and Technology Charter High School), MIT Office of the Arts, Morgan Stanley, Steve and Barry's University Sportswear
Nuclear Engineering (22)	Citigroup, Pinnacle West, United States Navy

2006 Masters Employers by Department

Course (Course Number)	Employers
Civil & Environmental Engineering (1)	Alvarado & Daring, Arup, Black & Veatch, CDM, Halvorson and Partners, Heery-HLM, Malcolm Pirnie, McNamara/Salvia, Mueser Rutledge Consulting Engineers, MWH, Parsons Brinkerhoff, Shelley Metz Baumann Hawk, Skidmore Owings and Merrill, Stevenson Associates,
Mechanical Engineering (2)	US Department of Defense
Materials Science and Engineering (3)	
Architecture (4)	
Chemistry (5)	
EECS (6)	Analog Devices, Inc., Apple Computer, Inc, Applied Predictive Technologies, Blackrock, D. E. Shaw & Co., L. P., Electronic Arts, Endeca, Goldman Sachs (Asia) L.L.C., Google ,IBM, Infinity Ward,L-3 Communications, Lazard, Linear Technology, McKinsey & Co., Medtronic Inc, Microsoft, NCsoft, Oracle, Self, VisionRobotics, VistaPrint, VMware
Biology (7)	
Physics (8)	
Brain and Cognitive Sciences (9)	
Chemical Engineering (10)	
Urban Studies and Planning (11)	AKRF, CDM, Center for the Study of the Buily Environment, CFW, Inc.,D.C. Office of Planning, Robert Charles Lesser & Assoc., San Francisco Department of City Planning, Summit Consulting, LLC, Vannasse Hangen Brustlin, Inc
EAPS (12)	
Ocean Engineering (13)	
Economics (14)	

2006 Masters Employers by Department Continued

Management (15)	<p>AdvisorNow, Inc., AIM, Airplay Network, Inc., Alinta, Amazon.com, American Airlines, American Express, Analysis Group, Ann Taylor Inc, Apple, Arnold Worldwide, ATKearney, Avaya, Bain & Co, Balyasny Asset Management, Banco Itau S/A, Bank of America, Barclays Capital, BCG, Bechtel Enterprises, Bell Helicopter / Textron, Boeing, Booz Allen Hamilton, The Boston Company, Boston Consulting Group, Builder Homesite, Inc., CA, Cartesian Capital Group, CEMEX, Chase Investment Counsel, China Fertilizer, Cisco Systems, Citigroup, Citigroup Global Markets, Colgate Palmolive, Cornerstone Research, Credit Suisse, Dell Inc, Deloitte & Touche, Deutsche Bank AG, Fidelity Investments, Genentech, General Dynamics, General Motors, Genzyme, Goldman Sachs, GreylockIsrael, Harbor Plastics Manufacturing Company, Harley-Davidson Motor Company, Honeywell, Honeywell Turbo Technologies, HSBC, IBM, Idenix, IdentiCert, Innosight, Intel Corporation, Investor Group Services, InVivo Therapeutics Corp, Johnson & Johnson, JP Morgan, Kenmar Global Investments, L.E.K. Consulting, Lehman, Liberty Mutual, Limited Brands, Mad Doc Software, Marakon Associates, Marsico Capital, McCall & Almy, McKinsey, Mellon Financial Corporation, Merck, Merrill Lynch, Microsoft, Mitchell Madison Group, Monitor Group, Morgan Stanley, Motorola, MPTV, NIKE, Nissan, Novartis Pharmaceuticals Corporation, NTT, NTT DoCoMo, Oracle Retail, Osio Corp, Palladium Group, Picoco LLC, PRTM, Putnam Investments, Raytheon Corp, The Rock Creek Group, Samsung, SAP, Schlumberger, Self, SembCorp Environmental Management, Servtec, SK Telecom, Standish Mellon Asset Management, Staples, Symantec, U. S. Coast Guard, UBS Investment Bank, Unibanco, United Airlines, United States Army, Universal Pictures, Valores Bavaria, Vericept, Vivox, The Walt Disney Company, The Washington Post Company, Wink, WR Grace, xQ Ventures, Yahoo!, Zeon Corporation</p>
Aeronautics and Astronautics (16)	
Political Science (17)	
Mathematics (18)	
Humanities (21)	
Nuclear Engineering (22)	
Linguistics and Philosophy (24)	
Biological Engineering (BE)	
Operations Research (OR)	
Engineering Systems Division (ESD)	<p>Accenture, Amazon, C&S Wholesale Grocers, Cap Gemini, Caterpillar Logistics, Inc., I2 Technologies, Icelandair, McKinsey & Company, Singapore Armed Forces, ToolsGroup</p>
Health Sciences and Technology (HST)	
Media Arts & Sciences (MAS)	
Comparative Media Studies (CMS)	
Systems Design & Management (SDM)	
Science Technology and Society (STS)	

2006 PhD Employers by Department

Course (Course Number)	Employers
Civil & Environmental Engineering (1)	BNP Paribas, Caliper Corporation, Fannie Mae, Harvard, Oracle
Mechanical Engineering (2)	Cummins, GE Energy, IBM, Mercer Management Consulting, Michelin North America, Sensitron, University of California, Riverside, VASA Associates, Inc.
Materials Science and Engineering (3)	3M, A Consulting Company, MIT
Architecture (4)	
Chemistry (5)	Chemistry Department, Harvard University, Cornell University (under Prof. Geoff Coates), Harvard Medical School, Hoffman-La Roche Pharmaceuticals, Intel, Laurence Berkeley National Lab, Max-Planck Institute of Microstructure Physics / Alexander von Humboldt Foundation, Millenium Pharmaceuticals, National Institute of Standards and Technology, Phillips Academy, The Scripps Research Institute, Wyeth
EECS (6)	Argonne National Laboratory, BBNT, Cambridge University Computer Laboratory, ETH, Google, Harvard University, Intel Corporation, MIT, MIT Lincoln Laboratory, Texas Instruments, ThingMagic Inc, UBS, UC Berkeley, University of California, University of Central Florida, University of Illinois
Biology (7)	Harvard Medical School, Microbia Inc, MIT
Physics (8)	Duke, Goldman Sachs, Harvard University, Kuberresystems, MIT, Princeton University, Rutgers University
Brain and Cognitive Sciences (9)	MIT
Chemical Engineering (10)	Agrivida, DuPont, MIT, Rice University, Rohm and Haas, University of California at Berkeley, University of Texas
Urban Studies and Planning (11)	University of Michigan
EAPS (12)	Carnegie Institution of Washington
Ocean Engineering (13)	
Economics (14)	Catholic University of Chile, Duke University, Federal Reserve Bank, IMF, Kellogg School of Management, Northwestern University, Korea Development Institute, London School of Economics, Middlebury College, Penn State, Protego Asesores, The World Bank, University of California at Berkeley, Washington University -- St. Louis
Management (15)	Hong Kong University of Science and Technology, London Business School, University of Washington
Aeronautics and Astronautics (16)	Aerospace Corporation, Athena Technologies, MIT, Pratt & Whitney
Political Science (17)	California Institute of Technology, Georgia Institute of Technology
Mathematics (18)	Caltech, IAS, Institute for Advanced Study, Miller Institute, New Trier High School, University of Chicago, UVA
Nuclear Engineering (22)	Aerospace Corporation, Harvard-ITAMP, Intel, US Army
Linguistics and Philosophy (24)	Queen Mary College, University of London
Biological Engineering (BE)	BG-Medicine, Vertex Pharmaceuticals
Engineering Systems Division (ESD)	ENVIRON International Corporation
Media Arts & Sciences (MAS)	Caltech, MIT Media Lab
Operations Research (OR)	Barclays Capital, Duke University, GlaxoSmithKline, Lawrence Livermore Labs, MIT Lincoln Laboratory, UCLA, UIC
Heath Sciences and Technology (HST)	Boston Consulting Group, Drexel University, Johns Hopkins, MIT
Science Technology and Society (STS)	

2006 Employers of International Students

Employers of International Undergraduates & Masters Graduates:

A.T. Kearney, Agency for Science, Technology and Research, Air France, Alinta, Alvarado & Doring, Amazon, Analysis Group, Applied Predictive Technologies, Arnold Worldwide, Athena Health, ATKearney, Avaya, Bain & Company, Banco Itau S/A, Bank of Tokyo-Mitsubishi UFJ, BCG, Black & Veatch, Booz Allen Hamilton, Broadcom, CA, CEMEX, Center for the Study of the Buily Environment, ChoiceStream, Citigroup, Continental Airlines, CRA International, Credit Suisse, Dagli Trading Ltd., Deloitte Consulting, Deutsche Bank AG, Endeca Inc, Fidelity Investments, General Motors, Gensler, Goldman Sachs, Google, HMMH Inc, HSBC, HVB, I2 Technologies, IBM, Icelandair, Johnson & Johnson, JPMorgan, JPMorgan Chase, Lehman Brothers, Liberty Mutual, McKinsey, Medtronic Inc, Merrill Lynch, Microsoft, MIT, Morgan Stanley, Murex, NTT, NTT DoCoMo, Oracle, Osio Corp, Samsung, ics, SAP, SembCorp Environmental Management, Servtec, SH&E Consulting, Singapore Armed Forces, SK Telecom, Stevenson Associates, Teradyne, The Boston Consulting Group, The Rock Creek Group, The Walt Disney Company, ToolsGroup, UBS Investment Bank, Unibanco, UTC Power, Valores Bavaria, WR Grace, Zeon Corporation

Employers of International PhDs:

3M A Consulting Company, Barclays Capital, BE BG-Medicine, BNP, Paribas, California Institute of Technology, Caliper Corporation, Caltech, Cambridge University Computer Laboratory, Catholic University of Chile, Duke University, ETH, Fannie Mae, Federal Reserve Bank, GE Energy, Goldman Sachs, Harvard University, Harvard-ITAMP, Hong Kong University of Science and Technology, IAS, IBM, IMF, Institut Rudjer Boskovic, Intel, Korea Development Institute, Kuberresystems, London Business School, London School of Economics, Massachusetts Institute of Technology, Max-Planck Institute of Microstructure Physics / Alexander von Humboldt Foundation, Mercer Management Consulting, Miller Institute for Basic Research in Science, Oracle Retails (was ProfitLogic), Penn State, Princeton University, Protego Asesores, Texas Instruments, The World Bank, UCLA, UIC, University of California, University of Chicago, University of Illinois

2006 Average Undergraduate & Masters Salary by Course (US Dollars)

(Number of respondents are in columns titled # after each salary amount. X represents 1 or no responses per cell.)

Course (Course Number)	SB	#	MNG/MNLG	#	SM	#	MBA	#	MCP	#
Civil & Environmental Engineering (1)	51,500	5	53,907	15	65,500	10				
Mechanical Engineering (2)	58,207	29			75,418	11				
Materials Science and Engineering (3)	57,668	8								
Architecture (4)	40,000	2				X				
Chemistry (5)	50,333	3								
EECS (6)	70,428	40	83,836	36	86,333	3				
Biology (7)	42,667	6								
Physics (8)	31,157	5			67,500	2				
Brain and Cognitive Sciences (9)	29,200	5								
Chemical Engineering (10)	56,272	12								
Urban Studies and Planning (11)		X				X		58,250		8
EAPS (12)		X				X				
Ocean Engineering (13)										
Economics (14)	59,625	12								
Management (15)	63,600	30			175,000	2	110,339	193		
Aeronautics and Astronautics (16)	56,719	24			68,144	15				
Political Science (17)	62,445	3								
Mathematics (18)	61,436	22								
Humanities (21)	56,563	8								
Nuclear Engineering (22)	51,333	3		X						
Biological Engineering (BE)										
Engineering Systems Design (ESD)			105,780	10	101,775	8				
Operations Research (OR)					52,000	2				
Technology & Policy Program (TPP)					71,700	5				
Health Sciences and Technology (HST)					87,500	2				
Media Arts & Science (MAS)						X				
Systems Design & Management (SDM)					104,818	11				
Average (including all responses)	59,072		80,074		81,979		110,339		58,250	

2006 Average PhD Salary by Course & Employment Sector (Dollars)

(Number of respondents are in columns titled # after each salary amount. X represents 1 or no responses per cell.)

Course (Course Number)	Industry/Gov.	#	Academics	#	Academic Post-Doc	#	Industry/Gov. Post-Doc	#
Civil & Environmental Engineering (1)						X		
Mechanical Engineering (2)		X		X				X
Materials Science and Engineering (3)						X		
Architecture (4)								
Chemistry (5)		X		X		X	39,333	6
EECS (6)	111,500	2	111,500	2	54,333	3	56,600	4
Biology (7)					38,000	2	29,333	3
Physics (8)					51,625	4		X
Brain and Cognitive Sciences (9)								X
Chemical Engineering (10)					38,000	2		X
Urban Studies and Planning (11)						X		
EAPS (12)						X	50,650	2
Ocean Engineering (13)								
Economics (14)	107,378	8	107,378	8				
Management (15)	158,333	3	158,333	3				
Aeronautics and Astronautics (16)						X		
Political Science (17)	75,000	3	75,000	3				
Mathematics (18)	53,000	2	53,000	2	51,000	4		X
Nuclear Engineering (22)		X		X		X		
Linguistics and Philosophy (24)		X		X				
Biological Engineering (BE)								
Engineering Systems Design (ESD)								
Operations Research (OR)	121,333	3	121,333	3				X
Health Sciences and Technology (HST)		X		X		X	45,500	2
Media Arts & Science (MAS)					50,000	2		
Science Technology and Society (STS)								
Average (including all responses)	92,308		104,039		44,532		58,343	

2006 Undergraduate Industry & Employer Data

Industry	# of Students	Employers	Average Salary	Salary Range
Computer & Electronic Products	5	A123 Systems, Bose, KLA-Tencor, Lexmark International, Linear Technology Corporation	64,500	48,000-75,000
Medical Instruments	3	Cordis Corporation, Formulatrix Inc., Guidant	58,000	54,000-60,000
Aerospace & Defense	13	Boeing, Lockheed Martin, Northrop Grumman Space Technology, Orbital Sciences, Raytheon	62,915	54,000-69,000
Radio, TV, Motion Pictures	2	Pixel Liberation Front, NBC (National Broadcasting Company) part of General Electric	X	X
Software & Data Services	6	IBM, Northrop Grumman Space Technology, TriTek Solutions, Oracle, Bloomberg, Stormforge Software / BiogenIdec	85,167	60,000-145,000
Software Developing & Publishing	16	Athena Health, Avenue A Razorfish, Vecna Technologies Inc, Endeca, FactSet, Google, HP, IBM, Microsoft, Oracle Corporation	75,906	60,000-100,000
Finance & Insurance	4	Milliman, Moody's Investors Service, Susquehanna International Group, DC Energy	71,375	48,000-90,000
Commercial & Other Banks	2	Fannie Mae, Goldman Sachs	X	X
Investment Bankers	24	Banc of America, Bear Stearns, Citigroup, Credit Suisse, Cushman & Wakefield, Deutsche Bank, Goldman Sachs, JP Morgan, Lehman Brothers, Morgan Stanley, UBS Investment Bank, Wachovia, SIG	63,511	55,000-120,000
Brokers & Security Dealers	10	BNP Paribas, Goldman Sachs, HSBC, JP Morgan Chase, Lehman Brothers, Morgan Stanley	62,500	55,000-75,000
Computer & Electronic Products	5	A123 Systems, Bose, KLA-Tencor, Lexmark International, Linear Technology Corporation	64,500	48,000-75,000
Medical Instruments	3	Cordis Corporation, Formulatrix Inc., Guidant	58,000	54,000-60,000

2006 Undergraduate Industry & Employer Data Continued

Aerospace & Defense	13	Boeing, Lockheed Martin, Raytheon, The Boeing Company, Orbital Sciences, Northrop Grumman Space Technology	62,915	54,000-69,000
Radio, TV, Motion Pictures	2	Pixel Liberation Front, NBC (National Broadcasting Company) part of General Electric	X	X
Money Mgmt, Mutual Funds, & Investment Advisors	10	AQR Capital Management, Citadel Credit Suisse, D.E. Shaw, E*TRADE Financial, Fidelity Investments, Goldman Sachs & Co., Jane Street Capital, Pyramis, Susquehanna	73,300	55,000-100,000
Business Professional, Scientific & Professional Services	8	Accenture, Booz Allen Hamilton, Citigroup, IBM, Lehman Brothers, NetCracker, PA Consulting	62,625	55,000-85,000
Architecture	2	Heller Manus Architects, IDEO	X	X
Management & Economic Consulting	22	Analysis Group, Applied Predictive Technologies, Bain and Company, Booz Allen Hamilton, Boston Consulting Group, CRA International, Deloitte Consulting LLP, Health Advances, Hitachi Consulting, Inductis, Inc., McKinsey & Company, Monitor Group, PA Consulting, Putnam Associates, SH&E Consulting, SKP, SH&E Consulting, SKP	58,295	40,000-78,000
Scientific & Engineering Services	4	Agency for Science, Technology and Research ARES, Dominion Engineering, Inc, Metis Design Corp.	52,750	16,000-75,000
Electrical Engineering and Computer Hardware Design or Research	6	DE Shaw Research and Development, MIT Lincoln Laboratory, IBM, HP, Teradyne, US Government	68,450	58,000-100,000
Environmental Engineering	3	ENVIRON, GZA Geoenvironmental, Inc, Malcolm Pirnie	46,500	44,000-50,000
Manufacturing Process Engineering	3	Apple, Stroud Consulting	62,000	58,000-68,000

2006 Undergraduate Industry & Employer Data Continued

Biological Sciences & Research Labs	8	Beth Israel Deaconess, Massachusetts General Hospital, MIT, National Institutes of Health Sensor Technologies, UCLA	29,750	20,000-38,000
Other Engineering & Scientific Services	7	ARES, Bluefin Robotics Corporation, Boeing, General Electric Global Research Center, Global Prior Art Inc., Novellus	61,000	52,000-70,000
Universities & Colleges	2	Massachusetts Institute of Technology MIT Office of the Arts	X	X
Primary & Secondary Schools	4	Boston Public School System, Boston Teaching Residency, Kwangju Foreign School MATCH (Media and Technology Charter High School)	19,300	7,000-36,000
Other Health Care	2	Massachusetts General Hospital, Children's Hospital	X	X
Federal Government-Military	8	United States Air Force, United States Marine Corps, United States Navy	35,819	29,000-43,000
Other	15	Arizona Diamondbacks, Avalere, Bain & Co., Digitas, IBM Business Consulting, Langer Lab, Liz Claiborne Inc., Mercer Oliver Wyman, Pinnacle West, Putnam Associates, Steve and Barry's University Sportswear, Systems Planning and Analysis, Inc., United States Navy, University of Maryland, Baltimore	47,800	18,000-75,000

2006 Masters Industry & Employer Data

Industry	# of Students	Employers	Average Salary	Salary Range
Management & Economic Consulting	61	A.T. Kearney, Analysis Group, Inc., Applied Predictive Technologies, Bain & Co, Booz Allen Hamilton, Boston Consulting Group, Cap Gemini, Cornerstone Research, CRA International, Deloitte & Touche, Deloitte Consulting, IBM, Innosight, L.E.K. Consulting, Marakon Associates, McKinsey, Mitchell Madison Group, Palladium Group, PRTM, The Monitor Group, ToolsGroup, ZS Associates,	111,779	65,500-160,000
Investment Bankers	27	Citigroup, Citigroup Global Markets, Credit Suisse, Deutsche Bank AG, Goldman Sachs, Goldman Sachs (Asia) L.L.C., HSBC, HVB, Lazard, Lehman Brothers, Merrill Lynch, Morgan Stanley, UBS Investment Bank	99,074	60,000-150,000
Money Management, Mutual Funds, & Investment Advisors	19	AIM, Balyasny Asset Management, Blackrock, CFW, Inc., Chase Investment Counsel, D. E. Shaw & Co., L. P., Fidelity Investments, Investor Group Services, Kenmar Global Investments, Lehman Brothers, Marsico Capital, Mellon Financial Corporation, Morgan Stanley, Picoco LLC, Putnam Investments, Standish Mellon Asset Management, The Boston Company, The Rock Creek Group	107,697	65,000-200,000
Heavy Construction	2	Alvarado & Doring, Bechtel Enterprises	X	X
Computer & Electronic Products	6	Bose, Cisco Systems, Hewlett-Packard, Intel, Motorola, Samsung Electronics	81,533	40,000-105,000
Computer Hardware or Components	5	Dell, Intel, Samsung	85,400	50,000-95,000

2006 Masters Industry & Employer Data Continued

Electronic Components & Integrated Circuits	3	Analog Devices, Inc., Intel Corporation, MPTV	101,667	78,000-120,000
Medical Instruments	4	Johnson & Johnson, Johnson & Johnson – Ethicon, Medtronic Inc	96,275	71,100-102,000
Aerospace & Defense	13	Bell Helicopter / Textron, Boeing, GE Avition, General Dynamics Robotic Systems, Honeywell, L-3 Communications, NASA Johnson Space Center, Northrop Grumman Corporation, Pratt and Whitney, Raytheon Corp	110,804	95,000-450,000
Autos, Trucks & Other Machinery	7	Caterpillar Logistics, Inc., Cummins, Inc, General Motors, Harley-Davidson Motor Company, Honeywell Turbo Technologies, Nissan	89,400	69,400-120,000
Pharmaceuticals & Biotechnology	6	Bristol-Myers Squibb, Genentech, Johnson & Johnson, Merck, Novartis Pharmaceuticals Corporation, Osio Corp	108,667	89,000-130,000
Misc. Non-Durable Products	2	Colgate Palmolive, Johnson & Johnson	X	X
Trade	5	Amazon, C&S Wholesale Grocers	107,560	82,400-155,400
Engineering Services	11	Air France, American Airlines, Continental Airlines, Expedia, I2 Technologies, Icelandair, IdentiCert, Kittelson and Associates, Sabre Airline Solutions, Technical Marine Planning, United Airlines	80,273	45,000-120,000
Communications	2	Avaya, SK Telecom	X	X
Radio, TV. Motion Pictures	2	The Walt Disney Company, Universal Pictures	X	X

2006 Masters Industry & Employer Data Continued

Broadcasting & Telecommunications	3	DoCoMo, NTT, SK Telecom	85,000	55,000-100,000
Software & Data Services	9	Google, Inc., IBM, Microsoft, Oracle Corporation, Symantec, Wink, xQ Ventures	109,333	85,000-134,000
Software Developing & Publishing	25	Builder Homesite, Inc., ChoiceStream, Electronic Arts, Endeca, Google, HubSpot, LLC, IBM, Infinity Ward, Mad Doc Software, Microsoft, Ncsoft, SAP, Vericept, VistaPrint, VMware, Inc.	92,300	65,000-250,000
Information Services & Data Processing	8	AdvisorNow, Inc., CA, Google, Microsoft, Murex, Oracle Retail, SAP, Vivox	114,625	85,000-150,000
Finance & Insurance	2	GE Energy Financial Services, Liberty Mutual	X	X
Commercial & Other Banks	7	American Express, Banco Itau S/A, Bank of America, Unibanco	122,143	90,000-160,000
Brokers & Security Dealers	6	Barclays Capital, Goldman Sachs, JP Morgan, Merrill Lynch, Morgan Stanley, UBS	107,500	95-160000
Venture Capital Firms	3	Cartesian Capital Group, GreylockIsrael, Valores Bavaria	98,333	90,000-110,000
Real Estate Development	3	Cabot, Cabot & Forbes, New England Center for the Study of the Buily Environment, Robert Charles Lesser & Assoc.	72,333	20,000-120,000
Business, Professional, & Scientific Technical Services	11	American Express, Analysis Group, Inc., BCG, Booz Allen Hamilton, Boston Consulting Group, IBM, InVivo Therapeutics Corp, Mercer Oliver Wyman, Monitor Group Summit Consulting, LLC, Yahoo!	104,727	60,000-220,000

2006 Masters Industry & Employer Data Continued

Architecture	2	Gensler, Heery-HLM	X	X
Scientific & Engineering Services	2	Draper Laboratory, MIT Lincoln Laboratory	X	X
Construction, Design, & Civil Engineering	10	Arup, Black and Veatch, Halvorson and Partners, McNamara/Salvia, Mueser Rutledge Consulting Engineers, Parsons Brinkerhoff, Shelley Metz Baumann Hawk, Skidmore Owings and Merrill, Stevenson Associates, Vannasse Hangen Brustlin, Inc.	53,910	50,000-63,500
Electrical Engineering or Computer Hardware Design	9	BBN Technologies, Black & Veatch, Broadcom, Google, Intel Corp, Linear Technology, Oracle	83,911	63,000-97,200
Environmental Engineering	3	CDM, ENVIRON, MWH	57,000	55,000-60,000
Manufacturing Process Engineering	2	Dell Inc, KLA-Tencor	X	X
Other Engineering & Scientific Services	3	Motorola, The Aerospace Corporation, VisionRobotics	71,666	70,000-75,000
Doctors & Other Health Care	2	Beth Israel Deaconess, Massachusetts General Hospital	X	X
Fed Govt- Military	9	U. S. Coast Guard, U.S. Air Force, United States Army, United States Navy, US Air Force, US ARMY, US Department of Defense, USAF, USMA Physics Dept	65,167	50,000-100,000
Other	21	Accenture, Airplay Network, Inc., AKRF Apple, Arnold Worldwide, Bank of America, BCG, Booz Allen Hamilton, Boston Consulting Group, CDM, China Fertilizer, Cisco Systems, Google, Idenix, Limited Brands, McKinsey, Self, Staples, US Army, US Navy	88,619	50,000-130,000

2006 PhD Industry & Employer Data

Industry	# of Students	Employers	Average Salary	Salary Range
Education-Post-Doc	41	Caltech, Cambridge University, Cornell University, Duke, Harvard Medical School Harvard University, Harvard-ITAMP, Institut Rudjer Boskovic, Institute for Advanced Study Johns Hopkins University, Massachusetts Institute of Technology, Max-Planck Institute of Microstructure Physics / Alexander von Humboldt Foundation, Princeton University, Rice University, Rutgers University, The Scripps Research Institute, University of California, University of California at Berkeley, University of Chicago, University of Illinois, University of Michigan, UVA, Woods Hole Oceanographic Institution	44,532	20,000-77,000
Government/Industry-Post-Doc	7	Argonne National Laboratory, Carnegie Institution of Washington, Children's Hospital, Lawrence Berkeley National Lab, Lawrence Livermore Labs, Miller Institute for Basic Research in Science, National Institute of Standards and Technology	58,343	40,000-86,400
Universities & Colleges, Primary & Secondary Schools	26	California Institute of Technology, Catholic University of Chile, Drexel University, Duke University, Georgia Institute of Technology, Hong Kong University of Science and Technology, London Business School, London School of Economics, Middlebury College, New Trier High School, Penn State, Phillips Academy, Queen Mary College, University of London, The World Bank, UCLA, UIC, University of California at Berkeley, University of California, Riverside, University of Central Florida, University of Missouri – Columbia, University of Washington, US Army, Washington University -- St. Louis	104,039	50,000-200,000

2006 PhD Industry & Employer Data Continued

Electrical Engineering & Computer Hardware Design	6	BBNT, IBM, Intel Corporation, ThingMagic Inc, Texas Instruments	99,500	94,000-103,000
Scientific & Engineering Services	4	Applied Physical Sciences, GlaxoSmithKline Sensitron, VASA Associates, Inc.	96,000	85,000-104,000
Biological Sciences & Research Labs	4	BG-Medicine, Microbia Inc, Vertex Pharmaceuticals	80,500	75,000-87,000
Business Professional, Scientific & Technical Services	4	GE Energy, Mercer Management Consulting, McKinsey and Co., The Boston Consulting Group	101,000	72,000-115,000
Federal Government - Civilian	3	Federal Reserve Bank, MIT Lincoln Laboratory, Naval Undersea Warfare Center	99,333	93,000-110,000
Aerospace & Defense	3	Aerospace Corporation, Athena Technologies, Pratt & Whitney	91,667	85,000-100,000
Chemical & Materials Engineering or Research	3	Agrivida, Rohm and Haas	64,000	30,000-80,000
Investment Bankers	3	Barclays Capital, BNP Paribas, Protego Asesores	114,333	95,000-148,000

2006 PhD Industry & Employer Data

Other	3	3M, IMF	92,000	86,000-100,000
Pharmaceuticals & Biotechnology	2	Hoffman-La Roche, Pharmaceuticals Wyeth	X	X
Brokers & Security Dealers	2	Goldman Sachs, UBS	X	X
Management & Economic Consulting	2	Korea Development Institute	X	X
Other Scientific & Engineering Services	2	MIT Lincoln Laboratory, Aerospace Corporation	X	X
Finance & Insurance	2	Fannie Mae, Kuberresystems	X	X
Environmental Engineering	1	ENVIRON International Corporation	X	X
Information & Data Processing Services	1	Google	X	X

2006 PhD Industry & Employer Data

Software Development & Publishing	1	Oracle Retails (was ProfitLogic)	X	X
Engineering Services	1	Caliper Corporation	X	X
Rubbber & Plastic Products	1	Michelin North America	X	X
Other Chemicals & Materials	1	DuPont	X	X
Autos, Trucks, & Other Machinery	1	Cummins	X	X
Electronic Components & Integrated Systems	1	Intel	X	X
Computer & Electronic Product	1	Intel	X	X