



The MIT Careers Office is pleased to provide the results of the MIT Class of 2008 Graduating Student Survey, providing information about the immediate post-graduation plans of all graduating MIT students. One thousand three hundred and eighteen of the 2,280 June 2008 graduates responded, representing 58 percent of the graduating class. This report represents a collaborative effort between this office and Institutional Research. I particularly want to thank John Nonnamaker, Associate Director for Graduate Student Career Services, for his leadership of this survey. Our survey of the MIT Class of 2008 certainly reflected these findings in their employment outcomes, as shown in the following highlights:

- The undergraduate placement rate (full-time employment or graduate studies) for the Class of 2008 is 87 percent, representing a slight decrease over 2007-08. Masters degree recipients saw placement rates of 90 percent. PhD graduates reported a placement rate of 93 percent.
- On-campus recruiting continues to be a primary source of employment as reported by 44 percent of bachelor's, 38 percent of master's and 20 percent of doctoral degree recipients. This represents a decrease for bachelor's and master's but a slight increase for PhDs. Three hundred and ninety seven employers recruited through the Careers Office in 2007-08, a 26 percent decrease over 2006-07. Networking and internships that led to a job offer represented the next highest methods. For bachelor's degree recipients, internships replaced networking as the next highest method and continuing the trend with an increase of 5% over 2006-2007. The importance of internships leading to full time jobs continues to emerge as a recruiting trend.
- Seventy one percent of undergraduates and 89 percent of Master's students indicated that their position was related to their academic major, down slightly from 2006-2007. The percentage of all students who accepted offers were with consulting and finance firms also decreased in 2007-2008 despite the fact that these employers seek out our graduate for their analytical and problem solving skills, which are characteristic of an MIT education. To both the students and the employers, these opportunities are directly related to academic major.
- The average salary for undergraduates was \$65,655, a 7.4 percent increase from the \$61,118 averages for 2007 graduating seniors. Nearly all other degree levels saw an increase. This represents the fourth year of salary increases for graduating seniors, and multi-year increases for most graduate degree recipients.
- Another measure of job market strength for the Class of 2008 was that over 59 percent secured their position by December 2007, compared to 50 percent for the class of 2007.

The full report follows, providing a broad snapshot of the professional and education destinations for the MIT Class of 2008. We welcome any comments or suggestions from the MIT community regarding ways that we may improve our survey process or reporting. Thank you!

Sincerely,

Melanie Parker
Executive Director, MIT Careers Office



Welcome to the 2007 MIT Careers Office Annual Graduating Student Survey Report.

Please take a moment to learn more about the survey and the data we collect and present.

PURPOSE:

The purpose of the Graduating Student Survey (GSS) is to promote an accurate understanding of the immediate post-graduation plans of all (undergraduate to PhD) graduating MIT students and to provide data for related career issues.

METHOD:

The GSS is a completely voluntary web-based survey. The survey was emailed as a link multiple times throughout the late spring and early summer in an effort to capture as much of the graduating student population as possible. Altogether, 1,318 (or 58%) June 2008 graduating MIT students participated in the 2008 Survey.

RESULTS:

All data are self reported and presented anonymously in aggregate form. Due to the variety and various levels of MIT degrees granted, the majority of statistics presented are related to specific subsets of the population (e.g., undergraduate, Masters, PhD, major, etc.) and are labeled accordingly. This is done to provide more meaningful and accurate data. Any data not labeled should be assumed to represent the entire sample.

The majority of results are presented in table format for ease of reading and comparison. Many tables contain empty cells. This is for two reasons; first, not all majors offer all types of degrees, and second, fewer than two students from that major and degree level responded to the survey question.

The remainder of this report presents the data that we collect and analyze. We highly recommend that you start with the Frequently Asked Questions, which highlight our most common requests for information.

The MITCO Data Committee
John Nonnamaker
Kathleen Haggerty
Deborah Liverman
Melissa Ackerman



GLOBAL EDUCATION AND CAREER DEVELOPMENT CENTER

2008 MIT POST GRADUATION STATISTICS*

*Based upon 1,318 responses (58%) to the June 2008 Graduating Student Survey

FREQUENTLY ASKED QUESTIONS

WHAT PERCENTAGE OF UNDERGRADUATE, MASTERS & PhD STUDENTS GO ON TO GRADUATE/PROFESSIONAL SCHOOL, WORK OR OTHER?*

Degree	Graduate/Professional School	Work	Other	Response Rate
SB	42%	45%	13%	63%
Masters	14%	76%	10%	48%
PhD	1%	92%	7%	70%

*Other includes continuing my studies (2nd bachelors degree), internship, taking time off, traveling, deciding between fields, public service, still looking for a job, undecided & other

WHAT PERCENTAGE OF PhDs GO INTO INDUSTRY, GOVERNMENT, ACADEMIA, POST-DOCS, CONTINUE THEIR EDUCATION, OR OTHER?

Industry, Government, or Business	Academia	Post-Doctoral Fellowships	Continuing Education	Other
47%	8 %	37%	1%	7%

WHICH EMPLOYERS HIRED THE MOST MIT GRADUATES?

Employer	# of Hires
McKinsey	32
MIT	19
Google	18
Booz Allen	15
Boston Consulting Group	15
Oracle	13
Goldman Sachs	10
Morgan Stanley	9
Microsoft	8
United States Air Force	8
Harvard University	7
Jet Propulsion Laboratory	7
J P Morgan	7
Bain & Company	5
Cisco	5
Boeing	5
UBS	5
United States Navy	5

HOW MANY EMPLOYERS RECRUITED THROUGH THE MIT CAREER DEVELOPMENT OFFICE IN 2007-2008? 397

WHAT WAS THE AVERAGE SALARY/BONUS (for those receiving bonuses) OF WORKING MIT GRADUATES?

SB:	\$ 65,655/	\$ 10,187
MEng:	\$ 85,830/	\$ 15,269
SM:	\$ 79,570/	\$ 12,188
MBA:	\$117,906/	\$ 33,029
PhDs Going Into Acad. Post-Docs:	\$ 44,370/	\$ 2,143
PhDs Going Into Ind Post-Docs:	\$ 89,720/	\$ 6,000
PhDs Going Into Industry:	\$106,469/	\$ 19,622
PhDs Going Into Academia:	\$101,857/	\$ 15,667

**HOW DID GRADUATES FIND THEIR JOBS?
(Students could check all that applied)**

	Undergrad	Masters	Doctoral
On-campus recruiting	43.8%	37.6%	19.7%
Networking	27.4%	28.9%	33.1%
Internship led to job offer	28.3%	14.9%	1.6%
Career fair	24.7%	15.7%	7.1%
Professional Conference	.5%	1.7%	8.7%
Contacts acquired through MIT Careers Office	.9%	3.7%	2.4%
Through Department (faculty, academic administrator)	5.9%	7.9%	22.8%
Directly applied to employer	22.4%	16.9%	36.2%
Advertised job listing (on-line, print)	5.5%	2.9%	18.9%
Other	10.0%	16.5%	10.2%

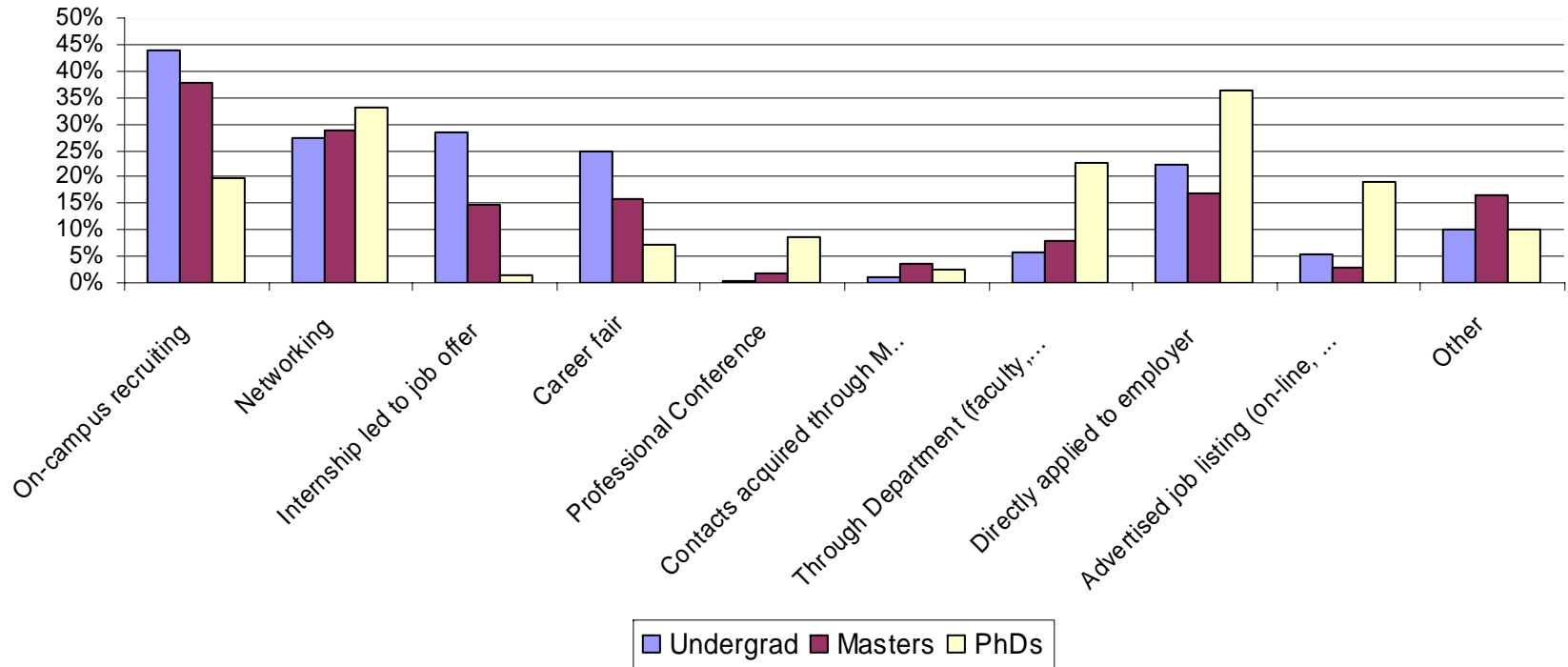
WHEN DID WORKING GRADUATES BEGIN THEIR JOB SEARCH AND RECEIVE THE JOB OFFER THEY ACCEPTED?

Month	Undergrad		Masters		Doctoral	
	Begin Search	Received Offer	Begin Search	Received Offer	Begin Search	Received Offer
Prior to September 2007	33.2%	18.9%	26.7%	19.8%	30.7%	9.9%
September 2007	31.6%	3.9%	30.5%	4.1%	30.0%	3.1%
October 2007	10.8%	12.7%	9.6%	9.9%	12.0%	6.1%
November 2007	2.8%	14.5%	5.5%	17.3%	5.3%	8.4%
December 2007	2.0%	9.2%	1.6%	8.2%	3.3%	12.2%
January 2008	4.8%	7.5%	5.1%	8.2%	6.0%	13.0%
February 2008	4.0%	11.0%	3.9%	8.2%	3.3%	11.5%
March 2008	2.8%	5.7%	2.9%	8.2%	2.7%	18.3%
April 2008	4.4%	9.6%	2.6%	7.8%	07%	8.4%
May 2008	1.2%	6.6%	1.3%	4.5%	2.7%	6.9%
June 2008	.4%	.4%	1.0%	2.9%	.0%	2.3%
July 2008	.0%	.0%	.6%	.8%	.0%	.0%
August 2008	.0%	.0%	.3%	.0%	.0%	.0%

WHAT IS THE AVERAGE FOR JOB APPLICATIONS/INTERVIEWS/JOB OFFERS?

Degree Level	Job Applications	Job Interviews	Job Offers
Undergraduate	13.0%	7.6%	2.1%
Masters	9.2%	6.4%	2.2
Doctoral	14.9%	6.0%	2.6%

How 2008 Graduates Found Their Jobs



WHAT PERCENTAGE OF WORKING GRADUATES NEGOTIATED THEIR SALARY AND BONUS?

Degree Level	Negotiated Salary	Negotiated Bonus
Undergraduate	13.4%	10.2%
Masters	32.0%	24.1%
Doctoral	20.2%	15.0%

WHAT WAS THE AVERAGE NEGOTIATED INCREASE IN SALARY AND BONUS OF WORKING GRADUATES?

Degree Level	Increase in Salary	Increase in Bonus
Undergraduate	\$6,056	\$2,974
Masters	\$6,685	\$4,691
Doctoral	\$4,557	\$14,346

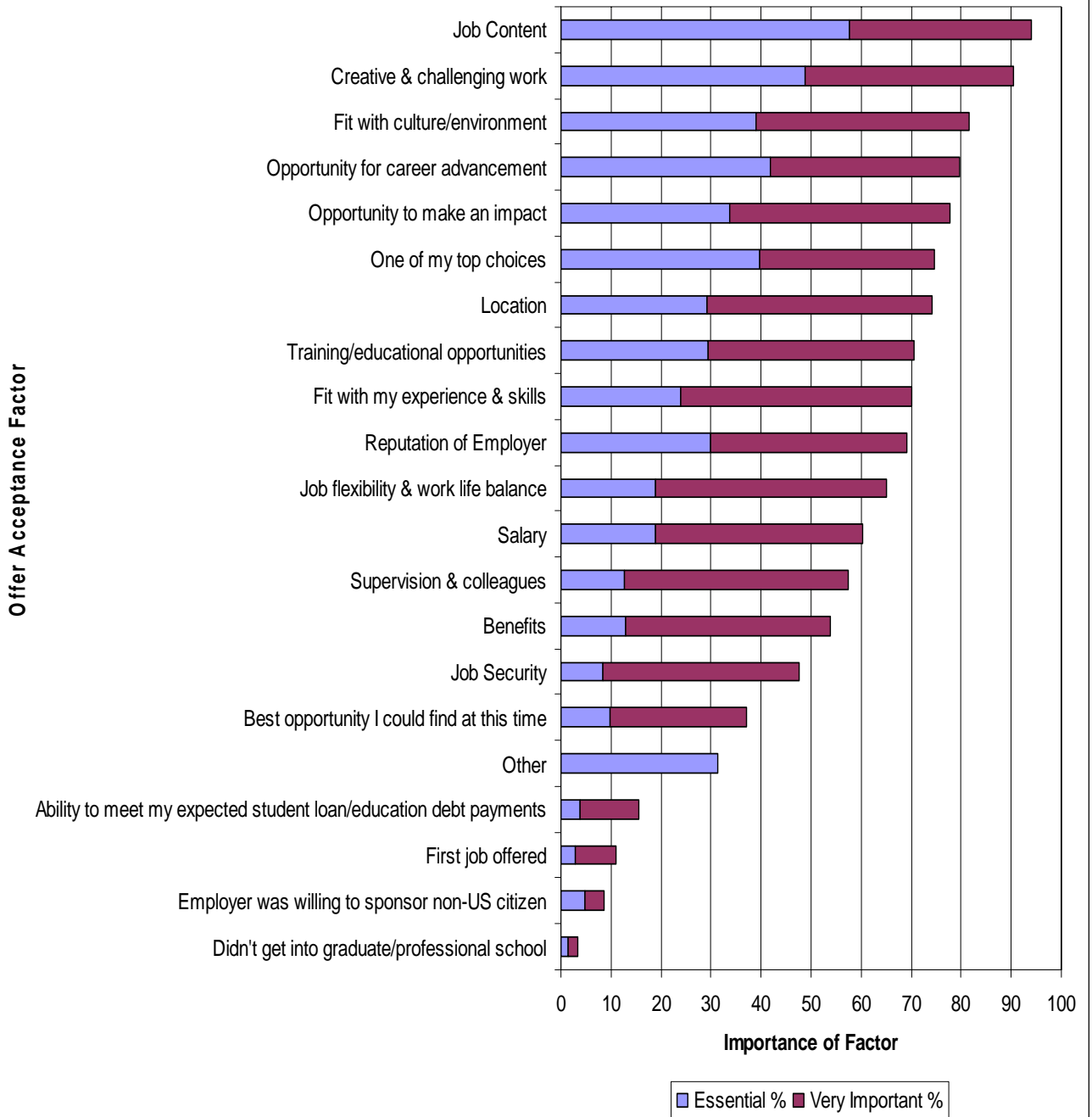
WHAT WERE THE TOP US LOCATIONS FOR WORKING GRADUATES?

Massachusetts	179
California	98
New York	92
Virginia	20
Illinois	19
Texas	16
Washington DC	15
Connecticut	13
New Jersey	12
Pennsylvania	10
Washington	9

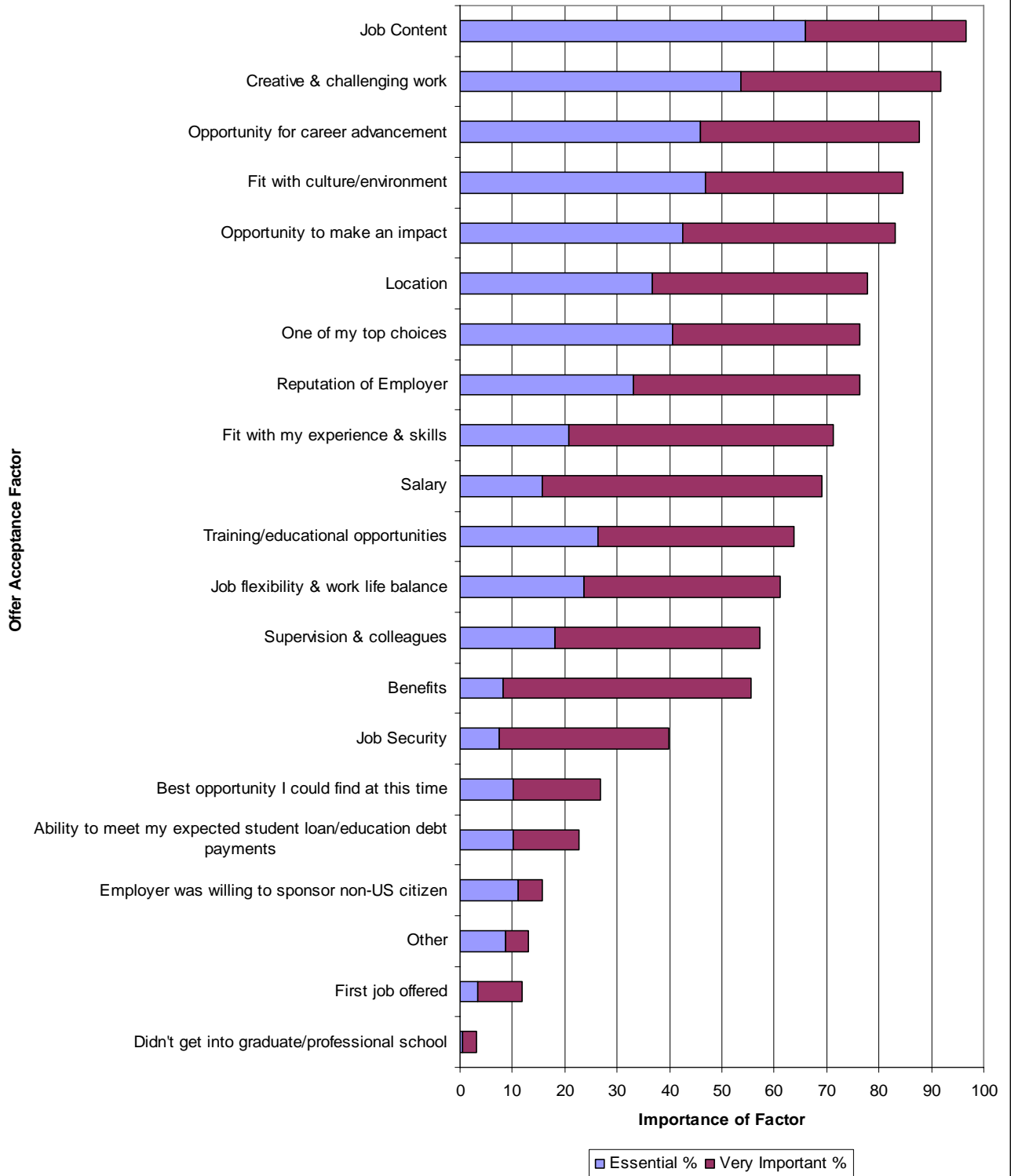
WHAT WERE THE TOP INTERNATIONAL LOCATIONS FOR WORKING GRADUATES?

United Kingdom	16
Singapore	7
Korea	5
Canada	5
China	5
Japan	5
Spain	4
Thailand	4
Switzerland	4
India	3
Mexico	3

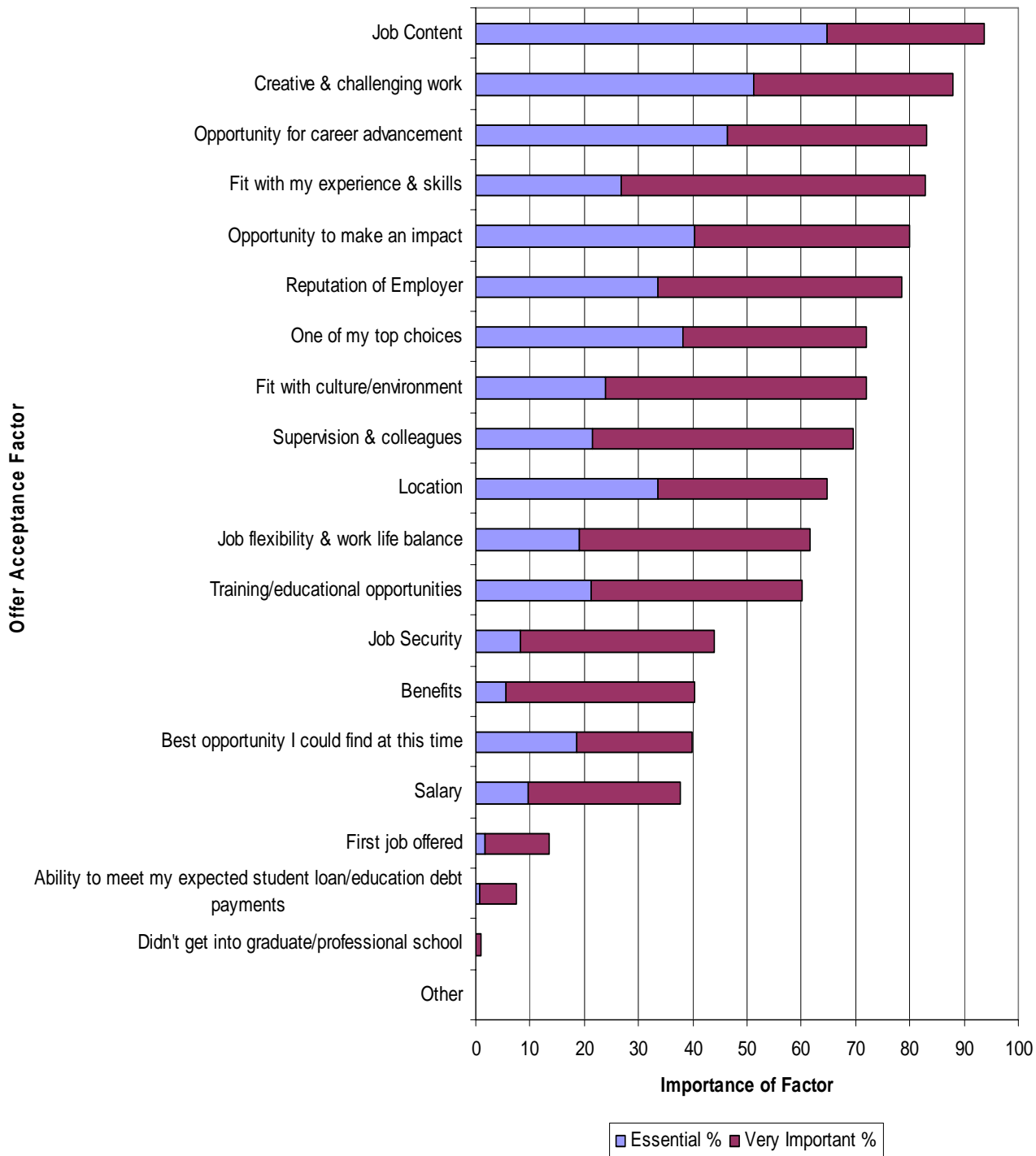
Factors Affecting Undergraduate Job Offer Acceptance 2008



Factors Affecting Master Student Job Offer Acceptance 2008



Factors Affecting PhD Job Offer Acceptance 2008



WHAT PERCENTAGE OF WORKING GRADUATES FOUND JOBS RELATED TO THEIR MAJORS?

Degree Level	YES	NO	DON'T KNOW
Undergraduate	71.2%	23.7	5.0%
Masters	88.9%	8.2%	2.9%
Doctoral	88.9%	7.1%	4.0%

WHAT PERCENTAGE OF WORKING GRADUATES TOOK JOBS IN FINANCE AND CONSULTING?

Degree Level	Finance	Consulting	Finance & Consulting
Undergraduate	27.2%	12.9%	40.1%
Masters	14.3%	19.3%	33.6%
Doctoral	2.5%	9.3%	11.8%

WHAT WAS THE AVERAGE FOR GRADUATE/PROFESSIONAL SCHOOL APPLICATIONS/ACCEPTANCES?

Degree Level	Application	Acceptances
Undergraduate	5.6	3.0
Masters	2.9	2.2
Doctoral	14	2

WHAT TYPE OF DEGREE WERE GRADUATES PURSUING?

	MENG	MS	MA	MBA	PHD	JD	MD	Other
Undergraduate	19.6%	19.2%	.7%	.4%	42.4%	2.5%	11.2%	3.6%
Masters	0%	3.6%	0%	3.6%	89.3%	1.9%	1.9%	0%
Doctoral	0%	0%	0%	0%	0%	0%	100%	0%

WHAT WERE THE TOP GRADUATE/PROFESSIONAL SCHOOL DESTINATIONS FOR GRADUATES?

School	# of Students Matriculating
MIT	135
Harvard University	24
Stanford University	19
John Hopkins University	9
University of California – Berkeley	8
Princeton	7
University of Texas	5
University of Pennsylvania	5
California Institute of Technology	4
Georgia Institute of Technology	3

WHAT PERCENTAGE OF UNDERGRADUATE, MASTERS & PhD STUDENTS COMPLETED AN INTERNSHIP WHILE IN THEIR CURRENT PROGRAM?

Undergraduate	76.5%
Masters	50.5%
PhD	20.1%

WHAT TYPE OF INTERNSHIPS DID GRADUATING STUDENTS COMPLETE WHILE IN THEIR CURRENT PROGRAM?

Type of Internship	Number of Students
Through My Department	222
On My Own/Other	146
UPOP	154
Externship	113
MISTI	69
F/ASIP	49

WHAT WAS THE PERCENTAGE OF GRADUATES WITH INTERNATIONAL EDUCATIONAL EXPERIENCE?

	YES	NO	DON'T KNOW
Undergraduate	24.4%	74.8%	.9%
Masters	38.2%	60.6%	1.2%
Doctoral	20.5%	77.8%	1.8%

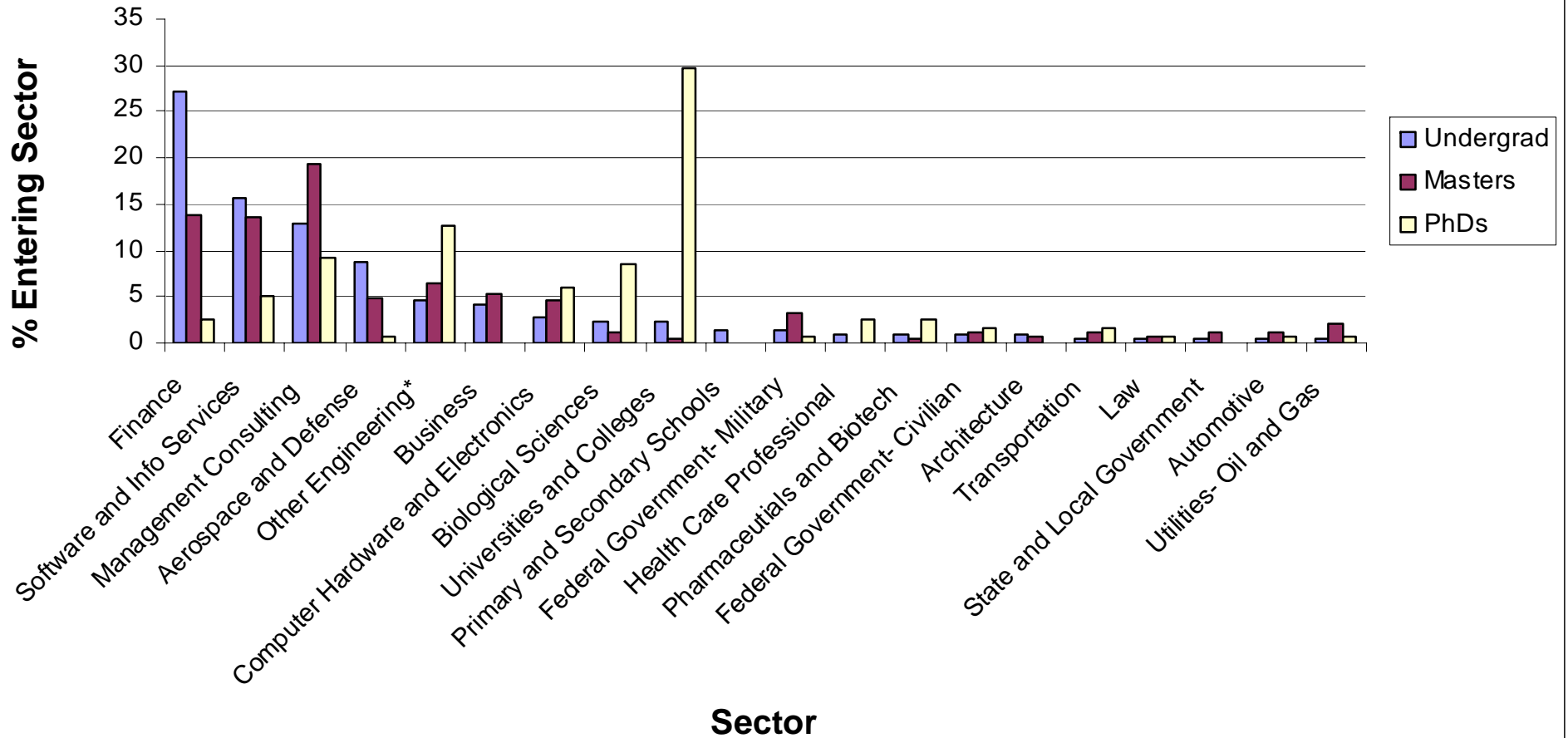
WHAT WAS THE PERCENTAGE OF GRADUATES WITH LEADERSHIP EXPERIENCE?

	YES	NO	DON'T KNOW
Undergraduate	63.7	27.9	8.4
Masters	51.5	42%	6.4%
Doctoral	40.2	54.4%	5.3%

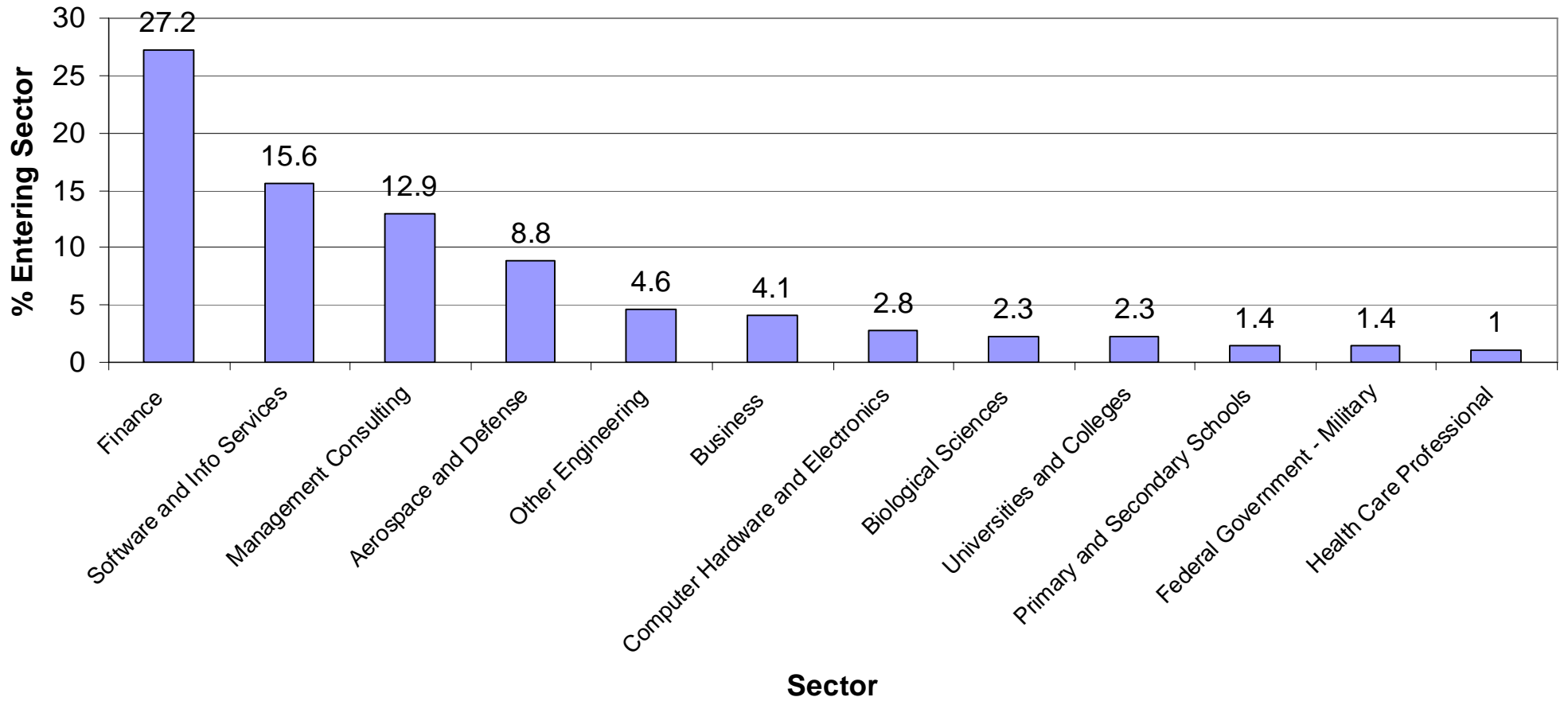
WHAT WAS THE PERCENTAGE OF GRADUATES WITH SERVICE EXPERIENCE?

	YES	NO	DON'T KNOW
Undergraduate	60.1%	35.3%	4.6%
Masters	30.1%	64.7%	5.2%
Doctoral	37.6%	56.6%	5.9%

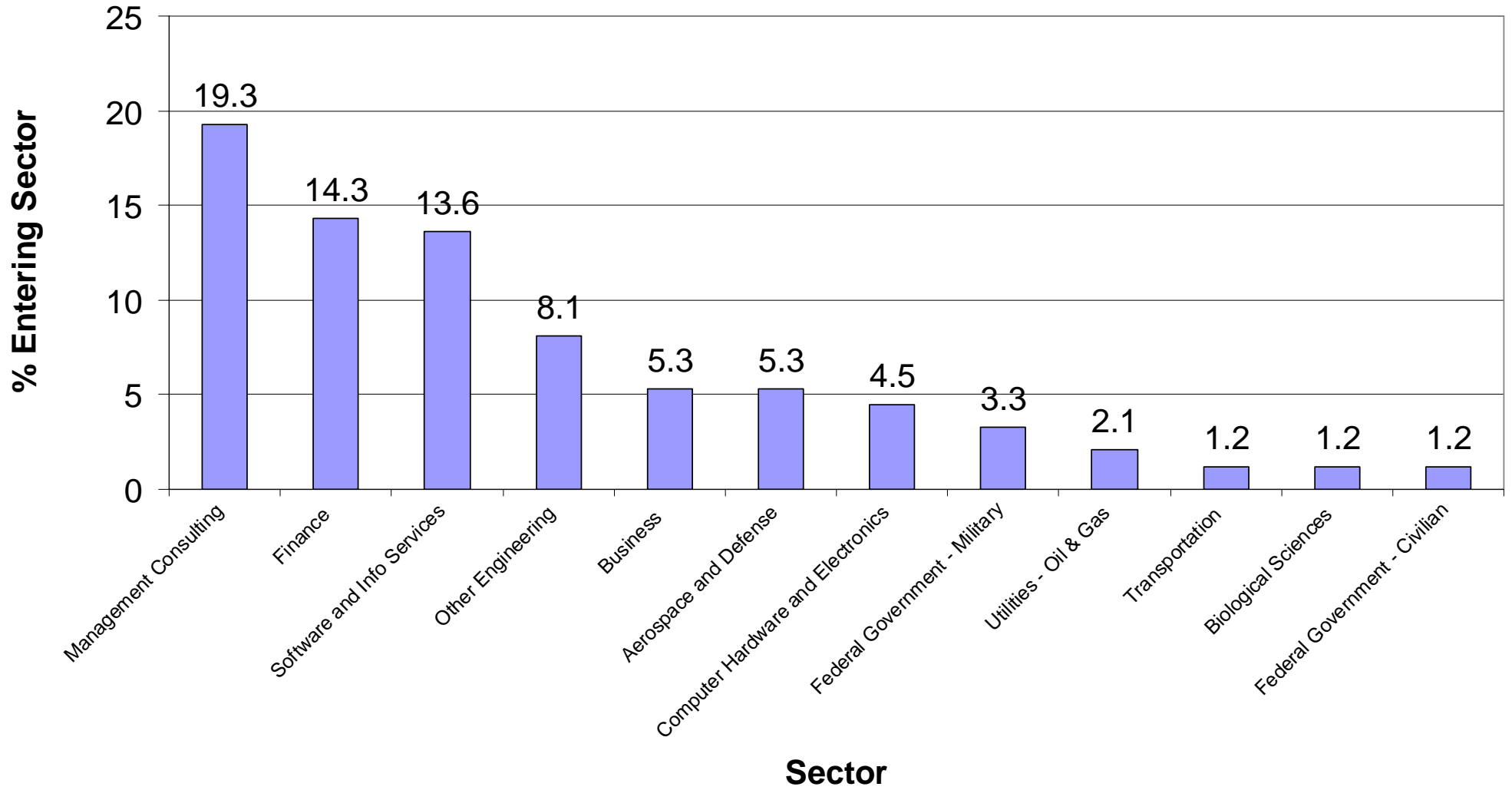
Top Sectors for Working June 2008 Students by Degree Level



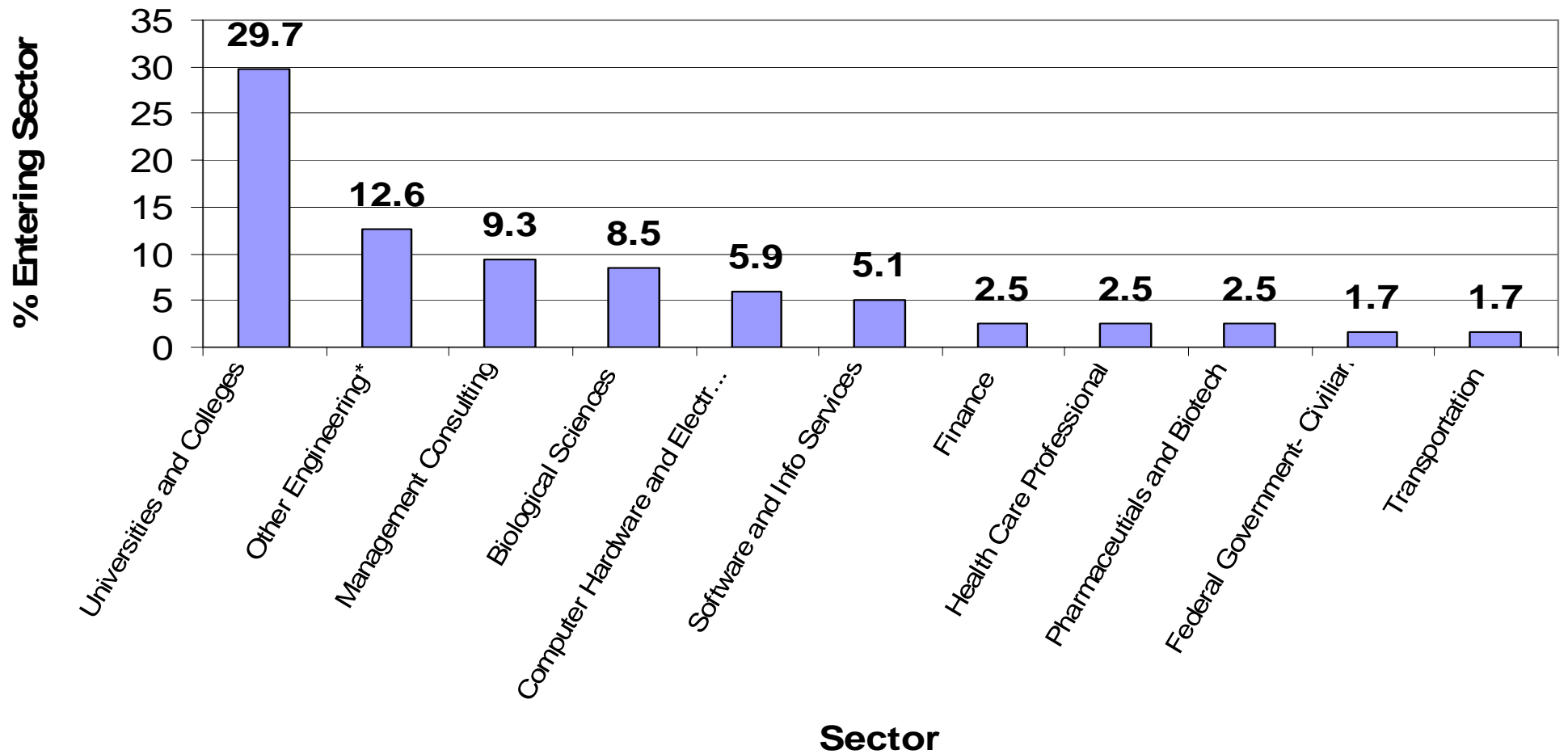
Top Sectors for Working June 2008 Undergraduates



Top Sectors for Working June 2008 Masters Students



Top Sector for June 2008 Working PhD Students



2008 Undergraduate Employers by Department

Course (Course Number)	Employers
Civil & Environmental Engineering (1)	Lehman Brothers, Opera Solutions, Parsons Corporation, Seabury Group, The Boston Consulting Group (BCG), United States Navy
Mechanical Engineering (2)	Altman Vilandrie and Co, Bain & Company, BNP Paribas, CSMG, Depuy Mitek, Dominion Engineering, First Manhattan Consulting Group, GE Fanuc, Goldman Sachs, Hasbro, Hoberman Associates, Jet Propulsion Laboratory, Karem Aircraft, McKinsey & Company, Merrill Lynch, Oliver Wyman, Raytheon, Ricoh Innovations Inc, Schlumberger, Self-employed, Teach for America, Textron Defense Systems, The Boeing Company, United Technologies Fire and Security, USPTO
Materials Science and Engineering (3)	1366 Technologies, Baker Hughes, Bell Helicopter, Boston Consulting Group, Epic Systems Inc., ExxonMobil, incTANK Ventures, Merrill Lynch
Architecture (4)	Amundsen Group, Darden Architects, John Moriarty and Associates, The Drawing Board, Inc.
Chemistry (5)	First Manhattan Consulting Group, MIT, Pivotal Labs
EECS (6)	Barclays Capital, Bridgewater Associates, Cisco, Deutsche Securities Inc., Discovery Engine, DRAPER Laboratory, Evenflow Inc. (dba Dropbox), GE, Google, IDT Corporation, International Gaming Technology, Intuit, Jane Street Capital, JPMorgan Chase, Lehman Brothers, Macquarie Group, Microsoft, Morgan Stanley, Mozilla Corporation, Next Jump, OpTrip, Oracle, Pegasystems, SynQor, Tallan Inc, Texas Instruments, The Boston Consulting Group, Thomson West, Vecna
Biology (7)	Arthur D. Little, Chisholm Laboratory, Health Advances, IMC Chicago, Lehman Brothers, Massachusetts General Hospital, MIT Office of the Arts, Trinity Partners
Physics (8)	General Electric Aviation, Lockheed Martin, Oracle
Brain and Cognitive Sciences (9)	Athena Health, Click Harmonics, Google, MIT Bizzi Lab
Chemical Engineering (10)	Altman Vilandrie & Co., Booz Allen Hamilton, Broad Institute of MIT and Harvard, Genentech, McKinsey & Co., Merck, MIT, Navigant Consulting, Inc., PA Consulting, Pall (Life Sciences Dept), Reckitt Benckiser, Rohm and Haas, Susquehanna International Group, T. Rowe Price, Teach For America, The Clorox Company, United States Navy

2008 Undergraduate Employers by Department Continued

Urban Studies and Planning (11)	
EAPS (12)	Storm Exchange
Economics (14)	Archelon LLC, Booz Allen Hamilton, Jane Street Capital, JP Morgan, McKinsey, NERA Economic Consulting, Stanford Law School, The Monitor Group
Management (15)	Altman Vilandrie & Co., AXA Financial, Booz Allen Hamilton, Capital One, Constellation Commodities, Digitas, Gambit Trading LLC, Goldman Sachs, Google, JPMorgan, JPMorgan Chase, JPMorgan Securities, Inc., Lehman Brothers, LEK Consulting, McKinsey & Company, Microsoft, Morgan Stanley, Oliver Wyman, Self-Employed, Target Corporation, The Boston Consulting Group, UBS, Wellington Management Company
Aeronautics and Astronautics (16)	Accenture, Boeing Company, Citigroup, GE Aviation, General Electric Aircraft Engines, Goldman Sachs, Karem Aircraft, Lockheed Martin, NASA Goddard Space Flight Center, Northrop Grumman Space Technologies, United States Air Force
Political Science (17)	Carnegie Endowment for International Peace, Eidetics, Joslin Diabetes Center – Harvard Medical School, MIT
Mathematics (18)	Alsop-Louie Partners, Booz Allen Hamilton, Credit Suisse, D. E. Shaw, Demiurge Studios, DRW Commodities, Goldman Sachs, Gotham Consulting Partners, HRT, MIT, Morgan Stanley, Snaptalent, Tradeworx, Inc, Vision Robotics, Wells Fargo
Biological Engineering (20)	454 Life Sciences, Applied Predictive Technologies (APT), Codon Devices, Decision Resources Inc., Fletcher Spaght, IBM, Rosetta Marketing
Humanities (21)	Electronic Arts, Goldman Sachs, Jet Propulsion Laboratory
Nuclear Engineering (22)	Eidetics, Inc. (acquired by Quintiles Consulting), EnerNOC, Raytheon, US Nuclear Regulatory Commission Reg. 1
Linguistics and Philosophy (24)	Google

2008 Masters Employers by Department

Course (Course Number)	Employers
Civil & Environmental Engineering (1)	3M, Arup, Camp Dresser & McKee, DRW Holdings, HNTB, Intel Corporation, J.V. Angeles Construction Corporation, Jacobs Engineering, Malcolm Pirnie, McKinsey & Company, McNamara/Salvia, Montgomery Associates Resource Solutions, QEA, LLC, US Navy, Washington Division of URS
Mechanical Engineering (2)	Alstom, Applied Minds, Booz Allen Hamilton, DRW Trading, Energy and Resource Solution, Inc., Exponent, Finnegan Henderson, Intel Corporation, Joby, MIT Lincoln Laboratory, US Air Force
Materials Science and Engineering (3)	A*STAR Exploit Technologies, G2 Technologies, IBM, Mars & Co, Textron, UBS
Architecture (4)	Cannon Design, Herzog & de Meuron, Radlab, Inc., Wiss Janney Elstner
Chemistry (5)	John Liggan Insurance
EECS (6)	Apple, Applied Materials, BBN Technologies, BCG, Blinkx, Bridgewater Associates, Citadel Investment Group, Endeca Technologies Inc., Facebook, Google, Harmonix Music Systems, Inc., Lehman Brothers, Microsoft, Northrup Grumman Space Technology, Numeric Investors, Oracle, Raytheon, Ropes & Gray, Self, TripAdvisor, US Navy, US Patent and Trademark Office, VistaPrint
Biology (7)	National Grid
Physics (8)	Jet Propulsion Laboratory
Brain and Cognitive Sciences (9)	
Chemical Engineering (10)	Exponent Inc., Exxon Mobil
Urban Studies and Planning (11)	Economic Development Corp. of NY, New York City Department of Small Business Services, New York City Economic Development Corporation, Radar Logic, Inc., Sasaki Associates
EAPS (12)	Teck Cominco
Ocean Engineering (13)	Exxon Mobil

2008 Masters Employers by Department Continued

Management (15)	Amazon.com, Apple, Avigo Capital, Bain & Company, Bank of New York Mellon, Barclays Capital, Bates White, LLC, Black Creek Capital, Booz Allen Hamilton, Boston Consulting Group, British Telecom, Byledge, Inc., Cambridge Associates, CambridgeSoft, CEMEX, Cisco, Compete, Inc., Deloitte Consulting, Deutsche Bank Securities, Inc., Diamond Management & Technology Consultants, Elite Sports Team, Emerson, Falabella, Fidelity, Gartner, Genzyme, Goldman Sachs, Google, Health Advances, Huff (W.R.) Asset Management, IAC, Infosys Consulting, Investor Group Services, Lane Berry, LEK Consulting, LG Display, Liberty Mutual, McKinsey & Company, Microsoft, Ministry of Finance, Monitor Group, Morgan Stanley, Parana Banco, PayPal, PRTM, RawSolar, Inc., Republic of Singapore Air Force, Rosetta Marketing Group, Sa Cavalcante Group, Samsung Electronics, Sears Holdings, Siemens Management Consulting, SOHU.COM INC., Starwood Hotels & Resorts, Telefonica I&D, The Blackstone Group, The Boston Consulting Group, The Parthenon Group, The Rock Creek Group, The Walt Disney Company, U.S. Coast Guard, UBS, Unilever, Union Square Advisors, USAF
Aeronautics and Astronautics (16)	Air Force, BCG, Booz Allen Hamilton, C.S. Draper Laboratory, Cathay Pacific Airways, Frontline Robotics, General Electric Aviation, Johns Hopkins Applied Physics Laboratory, Karem Aircraft, Lockheed Martin, McKinsey and Company, MIT Lincoln Laboratory, Northwest Airlines, Oliver Wyman, Orbital Sciences, PA Consulting, Singapore Armed Forces, Space Exploration Technologies, The Boeing Company, USAF
Applied Biological Sciences (20)	Agencourt Bioscience
Nuclear Engineering (22)	US Army, Vela Systems
Computational Design Optimization (CDO)	DRW, Nico Trading, Putnam Investments
Operations Research (OR)	Booz Allen Hamilton, US Air Force
Engineering Systems Division (ESD)	Amazon, American Express Company, AT Kearney, Booz Allen Hamilton, Capgemni, Cisco Systems, General Mills, IBM Global Business Services, London Offshore Consultants, McKinsey, Minor Food Group Public Company, MIT, PRTM Management, RichRelevance Inc., Schlumberger, The Boston Consultant Group
Heath Sciences and Technology (HST)	Harvard Medical School
Media Arts & Sciences (MAS)	Innosight
Systems Design & Management (SDM)	Deloitte Consulting, Eaton Corporation, NP Medical, Oracle, TIBCO Software Inc.
Technology and Policy Program (TPP)	Applied Predictive Technologies, Booz Allen Hamilton, EnerNOC, Iceland America Energy, ICF International, McKinsey, SaafWater

2008 Doctoral Employers by Department

Course (Course Number)	Employers
Civil & Environmental Engineering (1)	Airline Intelligence Systems, Baker Hughes, MIT, Oracle Corporation
Mechanical Engineering (2)	University of California Berkeley, MIT/MIST, Metal and Material Technology Center, United States Army, MIT Lincoln Laboratory, ExxonMobil, McKinsey and Company, National Renewable Energy Lab, Shell Oil Company
Materials Science and Engineering (3)	Booz Allen Hamilton, Computational Modeling Consultants, General Catalyst Partners, Harvard University, Intel, Kasetsart University, MIT, Philips Research Laboratory of Electronics, Sandia National Lab, Université Paris Est
Chemistry (5)	Albany Molecular Research Incorporated, Arkema, Bristol-Myers Squibb, Dow chemicals, Jet Propulsion Laboratory, Massachusetts General Hospital, MIT, MIT Lincoln Laboratory, UC Berkeley, UC Irvine, UC San Francisco, University of Wisconsin-Madison
EECS (6)	Cisco, Credit Suisse, EPFL, Google, Jet Propulsion Laboratory, Massachusetts Institute of Technology, McKinsey & Company, MGH, Microsoft Research, Oliver Wyman, Oracle, Ropes and Gray, SAIC, Samsung, SiOnyx, Inc., UIUC, UC, Berkeley, University of Toronto, University of Washington, Vertica
Biology (7)	Children's Hospital, Harvard Medical School, King's College, Michael Smith Genome Sciences Centre, MIT, NSF, UCSF, Whitehead Institute
Physics (8)	Boston Consulting Group, Dept. of Astronomy, U Texas at Austin, Hampton University, Lincoln Laboratory, MIT, Sandia National Lab, Slovak Academy of Sciences, University College London
Brain and Cognitive Sciences (9)	Booz Allen Hamilton, Cenomed BioSciences, MIT
Chemical Engineering (10)	Deloitte Consulting, Goldman Sachs International, Harvard/MGH, McKinsey & Company, Merck, MIT, Regeneron Pharmaceuticals, Schering-Plough, Stanford University, TIAX LLC
EAPS (12)	CalTech, EAPS, University of Pottsdam
Economics (14)	Clemson University, Federal Reserve Board of Governors, HP Lab, National Bureau of Economic Research, Tufts University, University of Maryland, University of Melbourne, Wellesley College
Management (15)	Harvard Business School, Optisolar, Yale School of Management
Aeronautics and Astronautics (16)	Aerodyne Research Inc., Boston Consulting Group, MIT, Sandia National Laboratory
Political Science (17)	Montclair State University, Williams College
Mathematics (18)	Johns Hopkins University, JP Morgan Chase, Morgan Stanley, Northwestern University, University of Toronto, Mississauga, Vanderbilt University, Yale University
Applied Biological Sciences (20)	ClearView Healthcare Partners, Ginkgo BioWorks, Harvard School of Public Health, Harvard University BIDMC, McKinsey & Company
Nuclear Engineering (22)	Tufts Medical Center
Engineering Systems Division (ESD)	World Bank
Media Arts & Sciences (MAS)	Nokia Research Center
Operations Research (OR)	United BioSource, McKinsey & Company

2008 Employers of International Students

Employers of International Undergraduates

Baker Hughes, First Manhattan Consulting Group, Goldman Sachs, Herzog & de Meuron, McKinsey & Company, Microsoft, MIT, Morgan Stanley, Oracle, Texas instruments, Thomson West, United Technologies Fire and Security

Employers of International Masters Students:

A*STAR Exploit Technologies, Agencourt Bioscience, Amazon, Arup, AT Kearney, Black Creek Capital, Booz Allen Hamilton, Boston Consulting Group, British Telecom, Cannon Design, CEMEX, Deloitte Consulting, Deutsche Bank Securities Inc, DRW Trading, Exponent, ExxonMobil, Falabella, Frontline Robotics, Goldman Sachs, Google, IBM, ICF International, J.V. Angeles Construction Corporation, Lehman Brothers, LG Display, Liberty Mutual, London offshore consultants, McKinsey & Company, Microsoft, Ministry of Finance, Minor Food Group Public Company, Morgan Stanley, Nico Trading, Northwest Airlines, Numeric Investors, Parana Banco, PayPal, Putnam Investments, Republic of Singapore Air Force, Sa Cavalcante Group, SaafWater, Samsung Electronics, Schlumberger, Singapore Armed Forces, SOHU.COM INC, Synthes, The Parthenon Group, TIBCO Software Inc., UBS

Employers of International PhDs:

Aerodyne Research Inc., Airline Intelligence Systems, Arkema, Baker Hughes, BBN Technologies, Booz Allen Hamilton, Boston Consulting Group, Caltech, Children's Hospital, Cisco, Credit Suisse, Dow chemicals, EPFL, Federal Reserve Board of Governors, Google, Harvard University, HP Lab, Johns Hopkins University, JP Morgan Chase, Kasetsart University, Massachusetts General Hospital, Massachusetts Institute of Technology, McKinsey and Company, Metal and Material Technology Center, Michael Smith Genome Sciences Centre, Microsoft Research, Oliver Wyman, Oracle Corporation, Research Laboratory of Electronics, Samsung, Slovak Academy of Sciences, Tufts University, U Texas at Austin, UCSF, Université Paris Est, University of Maryland, University of Toronto, Vanderbilt University, Yale School of Management, Yale University

2008 Average Undergraduate & Masters Salary by Course (US Dollars)

(Number of respondents are in columns titled # after each salary amount. Blank represents 1 or no responses per cell.)

Course (Course Number)	SB	#	MNG/MNLG	#	SM	#	MBA	#	MCP	#
Civil & Environmental Engineering (1)	57,833	6	60,355	10	59,600	5				
Mechanical Engineering (2)	62,993	28			83,710	12				
Materials Science and Engineering (3)	65,625	8	54,500	4	69,950	2				
Architecture (4)	46,750	4			59,000	2				
Chemistry (5)	61,667	3								
EECS (6)	79,345	42	90,685	23	84,000	5				
Biology (7)	53,688	8								
Physics (8)	61,625	4								
Brain and Cognitive Sciences (9)	53,750	4								
Chemical Engineering (10)	57,590	18			94,500	2				
Urban Studies and Planning (11)									69,400	5
EAPS (12)										
Economics (14)	63,125	8								
Management (15)	64,013	32					118,907	91		
Aeronautics and Astronautics (16)	61,371	13			73,203	21				
Political Science (17)	40,000	4								
Mathematics (18)	80,125	16								
Biological Engineering (20)	60,571	7								
Humanities (21)	63,333	3								
Nuclear Engineering (22)	58,250	4								
Linguistics and Philosophy (24)										
Computation for Design Optimization (CDO)					78,333	3				
Engineering Systems Design (ESD)			97,389	18	83,125	8	110,556	9		
Operations Research (OR)					65,000	2				
Technology & Policy Program (TPP)										
Health Sciences and Technology (HST)										
Media Arts & Science (MAS)										
Systems Design & Management (SDM)					127,500	4				
Average (including all responses)	65,655		85,830		79,570		117,906		69,400	

2008 Average Doctoral Salary by Course & Employment Sector (Dollars)

(Number of respondents are in columns titled # after each salary amount. Blank represents 1 or no responses per cell.)

Course (Course Number)	Industry/Gov.	#	Academics	#	Academic Post-Doc	#	Industry/Gov. Post-Doc	#
Civil & Environmental Engineering (1)	106,000	3						
Mechanical Engineering (2)	108,333	6						
Materials Science and Engineering (3)	98,413	8			44,300	5		
Architecture (4)								
Chemistry (5)	92,933	6			41,417	6		
EECS (6)	112,722	18			52,520	5	105,000	2
Biology (7)					45,750	8		
Physics (8)					41,460	5	89,300	2
Brain and Cognitive Sciences (9)	80,000	2						
Chemical Engineering (10)	108,071	7			41,000	3		
Urban Studies and Planning (11)								
EAPS (12)					45,000	2		
Economics (14)	98,000	5	126,667	3				
Management (15)								
Aeronautics and Astronautics (16)	107,000	3						
Political Science (17)								
Mathematics (18)	130,000	2			51,000	3		
Applied Biological Sciences (20)	80,500	2			37,900	2		
Nuclear Engineering (22)								
Linguistics and Philosophy (24)								
Biological Engineering (BE)								
Engineering Systems Design (ESD)	105,000	2						
Operations Research (OR)	105,000	2						
Health Sciences and Technology (HST)								
Media Arts & Science (MAS)								
Science Technology and Society (STS)								
Average (including all responses)	106,469		101,857		44,370		89,720	

2008 Undergraduate Industry & Employer Data

Industry	# of Students	Employers	Average Salary	Salary Range
Management & Economic Consulting	29	Accenture, Altman Vilandrie & Co., Amundsen Group, Applied Predictive Technologies (APT), Bain & Company, Booz Allen Hamilton, Boston Consulting Group, CSMG, Digitas, Eidetics, First Manhattan Consulting Group, Gotham Consulting Partners, IBM, McKinsey & Company, Navigant Consulting, Inc., NERA Economic Consulting, Oliver Wyman, PA Consulting, Rosetta Marketing, The Boston Consulting Group, The Monitor Group	64,938	55,000-90,000
Investment Bankers	22	Barclays Capital, Credit Suisse, Deutsche Securities Inc., Goldman Sachs, JP Morgan, JPMorgan Chase, JPMorgan Securities, Inc., Lehman Brothers, Macquarie Group, Morgan Stanley, UBS	61,909	60,000-77,000
Aerospace & Defense	17	Bell Helicopter, Boeing Company, GE Aviation, General Electric Aircraft Engines, Jet Propulsion Laboratory, Karem Aircraft, Lockheed Martin, NASA Goddard Space Flight Center, Northrop Grumman Space Technologies, Raytheon, Textron Defense Systems, The Boeing Company, United States Air Force	64,543	48,000-80,000
Software Developing & Publishing	17	Demiurge Studios, Discovery Engine, Google, International Gaming Technology, Microsoft, Morgan Stanley, Mozilla Corporation, OpTrip, Oracle, Pivotal Labs, Vecna	81,588	60,000-110,000
Other	12	Altman Vilandrie and Co., Carnegie Endowment for International Peace, Electronic Arts, EnerNOC, Epic Systems Inc., Hasbro, HRT, LEK Consulting, MIT, Opera Solutions, United States Navy	60,625	35,000-145,000
Money Management, Mutual Funds, & Investment Advisors	11	Bridgewater Associates, D. E. Shaw, IMC Chicago, Jane Street Capital, JPMorgan Chase, T. Rowe Price, Tradeworx, Inc., Wellington Management Company	100,455	60,000-200,000
Software & Data Services	10	Cisco, Evenflow Inc. (dba Dropbox), Google, Intuit, Oracle, Tallan Inc.	82,750	63,500-98,000

2008 Undergraduate Industry & Employer Data

Brokers & Security Dealers	10	Archelon LLC, Citigroup, Gambit Trading, LLC, Goldman Sachs, Jane Street Capital, JPMorgan, Lehman Brothers, Merrill Lynch, Susquehanna International Group, UBS	64,700	50,000-100,000
Business, Professional, Scientific & Technical Services General	9	Altman Vilandrie & Co., Booz Allen Hamilton, Capital One, Eidetics, Inc. (acquired by Quintiles Consulting), First Manhattan Consulting Group, Health Advances, Seabury Group, Self-Employed, Trinity Partners	56,833	10,000-70,000
Finance & Insurance General	8	AXA Financial, Constellation Commodities, D. E. Shaw, DRW Commodities, Goldman Sachs, Merrill Lynch, Storm Exchange, Wells Fargo	67,125	55,000-85,000
Information Services & Data Processing Services	7	Athena Health, Click Harmonics, Google, IDT Corporation, Snaptalent	69,857	45,000-85,000
Biological Sciences & Research Labs	5	Broad Institute of MIT and Harvard, Chisholm Laboratory, Codon Devices, Massachusetts General Hospital, MIT Bizzi Lab	41,800	31,000-55,000
Universities & Colleges	5	MIT, Stanford Law School	33,800	15,000-42,000
Scientific & Engineering Services	4	454 Life Sciences, Decision Resources Inc., Dominion Engineering, Pegasystems	60,000	45,000-70,000
Computer & Electronic Products	3	1366 Technologies, SynQor, Vision Robotics	60,000	55,000-65,000
Venture Capital Firms	3	Alsop-Louie Partners, Fletcher Spaght, incTANK Ventures	61,667	55,000-70,000
Architecture	3	Darden Architects, Hoberman Associates, The Drawing Board, Inc.	43,333	38,000-52,000
Primary & Secondary Schools	3	Teach for America	41,667	40,000-45,000
Autos, Trucks & Other Machinery	2	GE, GE Fanuc		
Pharmaceuticals & Biotechnology	2	Genentech, Merck		
Utilities – Oil & Gas	2	Baker Hughes, ExxonMobil		

2008 Undergraduate Industry & Employer Data

Commercial & Other Banks	2	BNP Paribas, Goldman Sachs		
Electrical Engineering & Computer Hardware Design or Research	2	DRAPER Laboratory, Texas Instruments		
Manufacturing Process Engineering	2	The Clorox Company, United Technologies Fire and Security		
Other Engineering & Scientific Services	2	Lockheed Martin, Ricoh Innovations Inc.		
Federal Government-Civilian	2	US Nuclear Regulatory Commission Reg. 1, USPTO		
Federal Government-Military	2	United States Air Force, United States Navy		
Oil, Natural Gas	1	Schlumberger		
Construction General	1	John Moriarty and Associates		
Electronic Components & Integrated Circuits	1	Texas Instruments		
Medical Instruments	1	Depuy Mitek		
Non-Durable Manufacturing	1	Reckitt Benckiser		
Other Chemicals & Materials	1	Rohm and Haas		
Trade (Resale & Wholesale)	1	Target Corporation		
Transportation	1	General Electric Aviation		
Communications General	1	Next Jump		
Books & Publishing	1	Self-employed		

2008 Undergraduate Industry & Employer Data

Law	1	Thomson West		
Chemical & Materials Engineering or Research	1	Pall (Life Sciences Dept)		
Environmental Engineering, Services, and Research	1	Parsons Corporation		
Educational Services General	1	Employer name not provided		
Doctors, Dentists, Surgeons, Psychologists, and Other Health Care Professionals	1	Joslin Diabetes Center, Harvard Medical School		
Other Health Care	1	Arthur D. Little		
State and Local Government	1	Booz Allen Hamilton		

2008 Masters Industry & Employer Data

Industry	# of Students	Employers	Average Salary	Salary Range
Management & Economic Consulting	47	A.T. Kearney, Bain & Company, Bates White, LLC, Booz Allen Hamilton, Boston Consulting Group, Deloitte Consulting, Diamond Management & Technology Consultants, ICF International, Infosys, Innosight, Investor Group Services, LEK, McKinsey & Company, Monitor Group, PRTM, The Parthenon Group	118,085	30,000-170,000
Software Developing & Publishing	19	BBN Technologies, Blinkx, CambridgeSoft, Endeca Technologies, Inc., Facebook, Google, Harmonix Music Systems, Microsoft, Oracle, Self, Vela Systems	96,059	60,000-170,000
Other	16	Amazon.com, Booz Allen Hamilton, Boston Consulting Group, Deloitte Consulting, Elite Sports Team, Finnegan Henderson, IBM Global Business Services, Iceland America Energy, McKinsey & Company, SaafWater, United States Air Force, Vistaprint.	107,143	60,000-140,000
Investment Bankers	14	Barclays Capital, Citi, Deutsche Bank Securities Inc, DRW Trading, Goldman Sachs, Lane Berry, Lehman Brothers, Morgan Stanley, Nico Trading, UBS, Unilever, Union Square Advisors	96,993	75,000-125,000
Money Management, Mutual Funds, & Investment Advisors	14	Bank of New York Mellon, Black Creek Capital, Bridgewater Associates, Cambridge Associates, Citadel Investment Group, DRW Holdings, Fidelity, Goldman Sachs, Huff (W.R.) Asset Management, Numeric Investors, Putnam Investments, The Blackstone Group, The Rock Creek Group	107,357	65,000-135,000
Business, Professional, & Scientific Technical Services	13	Applied Predictive Technologies, Bain and Co., Booz Allen Hamilton, Boston Consulting Group, Capgemini, Gartner, Health Advances, Mars & Co., McKinsey & Company, PA Consulting, Rosetta Marketing Group, Siemens Management Consulting	100,583	85,000-125,000
Aerospace & Defense	12	C.S. Draper Laboratory, General Electric Aviation, Jet Propulsion Laboratory, Karem Aircraft, Lockheed Martin, Northrup Grumman Space Technology, Raytheon, Space Exploration Technologies, Textron, The Boeing Company	84,965	64,000-105,000

2008 Masters Industry & Employer Data Continued

Computer & Electronic Products	9	Apple, Cisco, IBM, Intel, LG Display, Motorola, Samsung Electronics	95,889	30,000-120,000
Fed Govt- Military	8	Republic of Singapore Air Force, Singapore Armed Forces, US Coast Guard, US Air Force, US Navy, USAF	78,875	45,000-200,000
Information Services & Data Processing	7	Byledge, Inc., Compete, Inc., Google, IAC, PayPal, Radar Logic, Inc., TIBCO Software	109,286	90,000-135,000
Scientific & Engineering Services	7	Alstom, Arup, EnerNOC, Exponent, Inc., G2 Technologies, Johns Hopkins University Applied Physics Lab, MIT Lincoln Laboratory	78,360	54,000-120,020
Software & Data Services	6	Google, richrelevance, inc., Trip Advisor	105,000	90,000-110,000
Construction, Design, & Civil Engineering	5	Energy and Resource Solutions, Inc., HNTB, McNamara/Salvia, Montgomery Associates Resource Solutions, Washington Division of URS	58,200	56,000-62,500
Utilities, Oil & Gas	5	Exxon Mobil, London Offshore Consultants, National Grid, Schlumberger	83,100	65,000-100,000
Other Engineering & Scientific Services	4	Applied Minds, Exponent, Joby, Orbital Sciences	85,000	78,000-95,000
Environmental Engineering	4	Camp Dresser & McKee Inc., Malcolm Pirnie, QEA, LLC	60,350	59,400-62,000
Fed Govt-Civilian	4	A*STAR Exploit Technologies, Ministry of Finance, US Patent and Trademark Office, USAF	68,263	28,000-125,000
Architecture	4	Cannon Design, Herzog & de Meuron, Myself/Radlab, Inc., Sasaki Associates	52,500	50,000-55,000
Autos, Trucks & Other Machinery	3	American Axle and Manufacturing, Caterpillar, Eaton Corporation	116,500	115,000-118,000

2007 Masters Industry & Employer Data Continued

Construction General	3	J.V. Angeles Construction Corporation, Wiss Janney Elstner	76,500	68,000-85,000
Trade (Retail and Wholesale)	3	Amazon, Falabella, Sears Holdings	110,000	95,000-127,000
Transportation	3	Cathay Pacific Airways, Jacobs Engineering, Northwest Airlines	60,256	30,769-85,000
Autos, Trucks and Other Machinery	3	American Axle & Manufacturing, Caterpillar, Eaton Corporation	116,500	115,000-118,000
Manufacturing Process	3	Applied Materials, Intel Corporation	79,333	73,000-85,000
Finance & Insurance	3	American Express, Liberty Mutual, Oliver Wyman	94,000	65,000-120,000
Biological Sciences and Research Labs	3	Agencourt Bioscience, Genzyme Genetics, Harvard Medical School	76,333	54,000-100,000
State and Local Government	3	Economic Development Corp. of NY, New York City Department of Small Business Services, New York City Economic Development Corporation	61,000	58,000-64,000
Law	2	Ropes & Gray		
Electrical Engineering or Computer Hardware Design	2	Frontline Robotics, MIT Lincoln Laboratory		
Food Products	2	General Mills, Minor Food Group Public Company		
Broadcasting and Telecommunications	2	British Telecom, Telefonica I&D		
Computer Hardware or Components	2	Dell Inc, Intel Corporation		
Medical Instruments	2	NP Medical, Synthes		

2008 Doctoral Industry & Employer Data

Industry	# of Students	Employers	Average Salary	Salary Range
Education-Post-Doc	40	Caltech, Hampton University, Harvard Medical School, Harvard School of Public Health, Harvard University, Johns Hopkins University, King's College, Massachusetts Institute of Technology, Northwestern University, Slovak Academy of Sciences, Stanford University, University of Illinois, IUC, Université Paris Est, University College London, University of California, Berkeley, University of California, Irvine, University of California, San Francisco, University of Potsdam, University of Texas at Austin, University of Toronto, University of Washington, University of Wisconsin-Madison, Vanderbilt University, Williams College, Yale University	44,348	20,000-75,000
Management & Economic Consulting	14	Booz Allen Hamilton, Boston Consulting Group, Deloitte Consulting, McKinsey & Company, Oliver Wyman	123,143	70,000-180,000
Universities & Colleges, Primary & Secondary Schools	11	Clemson University, EPFL, Harvard Business School, Kasetsart University, MIT Lincoln Laboratory, Montclair State University, Tufts University, University of Maryland, University of Melbourne, Wellesley College, Yale School of Management	102,300	63,000-160,000
Software Development & Publishing	9	CasePick Systems LLC, Google, Optisolar, Oracle Corporation, The World Bank, Vertica	118,286	105,000-140,000
Government/Industry Post-Doc	9	Children's Hospital, Massachusetts General Hospital, Microsoft Research, National Bureau of Economic Research, Research Laboratory of Electronics, Sandia National Lab, Whitehead Institute	67,100	37,000-115,000
Chemical & Materials Engineering or Research	6	Bristol-Myers Squibb, Computational Modeling Consultants, Sandia National Laboratory, Schering-Plough	97,583	90,000-101,000
Electrical Engineering & Computer Hardware Design	5	Cisco, HP Lab, Jet Propulsion Laboratory, Samsung	110,250	100,000-130,000
Investment Bankers	4	Credit Suisse, Goldman Sachs International, JP Morgan Chase, Morgan Stanley	118,750	95,000-160,000

2008 Doctoral Industry & Employer Data Continued

Electrical Engineering & Computer Hardware Design	5	Cisco, HP Lab, Jet Propulsion Laboratory, Samsung	110,250	100,000-130,000
Investment Bankers	4	Credit Suisse, Goldman Sachs International, JP Morgan Chase, Morgan Stanley	118,750	95,000-160,000
Biological Sciences & Research Labs	4	Cenomed BioSciences, Ginkgo BioWorks, Lincoln Laboratory, Regeneron Pharmaceuticals	75,450	36,000-100,800
Computer & Electronic Products	3	Cambridge Analog Technologies, Intel, SiOnyx, Inc.	111,767	95,000-135,000
Scientific & Engineering Services	3	BBN Technologies, Dow chemicals, SAIC	100,000	90,000-110,000
Oil & Natural Gas	2	Baker Hughes, ExxonMobil		
Federal Government – Civilian	2	Federal Reserve Board of Governors		
Pharmaceuticals & Biotechnology	2	Albany Molecular Research Incorporated, Merck		
Transportation	1	Airline Intelligence Systems		
Federal Government –Military	1	United States Army		
Aerospace & Defense	1	MIT Lincoln Laboratory		
Telecommunications Equipment	1	Cisco		
Lighting, Appliances, Transformers	1	Phillips		
Autos, Trucks, & Other Machinery	1	National Renewable Energy Lab		

2008 Doctoral Industry & Employer Data Continued

Other Engineering and Scientific Services	1	Metal and Material Technology Center		
Doctors, Dentists, Surgeons	1	Tufts Medical Center		
Broadcasting and Telecommunications	1	Nokia Research Center		
Other Healthcare	1	United BioSource		
Venture Capital Firms	1	General Catalyst Partners		
Law	1	Ropes & Gray		
Environmental Engineering	1	Aerodyne Research		
Rubber & Plastic Products	1	Arkema		