

Internet Explorer 7 for Windows XP: Obtaining MIT Certificates

Overview

In order to use secure web services at MIT, you will need to obtain two types of MIT web certificates:

- MIT Certificate Authority (MIT CA)
- MIT Personal Certificate

This page provides instructions for installing both types of certificates in IE7 on Windows XP.

Note: If you are upgrading from IE6, your existing MIT certificates will be carried over into IE7.

Get the MIT CA (MIT Certificate Authority)

The MIT Certifying Authority (CA) certificate is used to confirm that the Web servers you are connecting to are valid MIT servers. Complete the following steps to obtain your CA certificate for Microsoft Internet Explorer:

1. In IE7 go to [Certificates at MIT](#).
Result: The Certificates at MIT page appears.
2. Click **Get MIT CA (Certificate Authority)**.
Result: The File Download dialog appears.



3. In the File Download window, click **Open**.
Result: The Certificate dialog appears with an "X" over the Certificate Information icon indicating that the certificate has not yet been installed.



Note: If the above Certificate screen does not appear, see [Importing the CA Certificate into Internet Explorer](http://itinfo.mit.edu/article.php?id=6725) <http://itinfo.mit.edu/article.php?id=6725> and follow the instructions provided.

4. Click **Install Certificate**.
Result: The Certificate Import Wizard dialog appears.



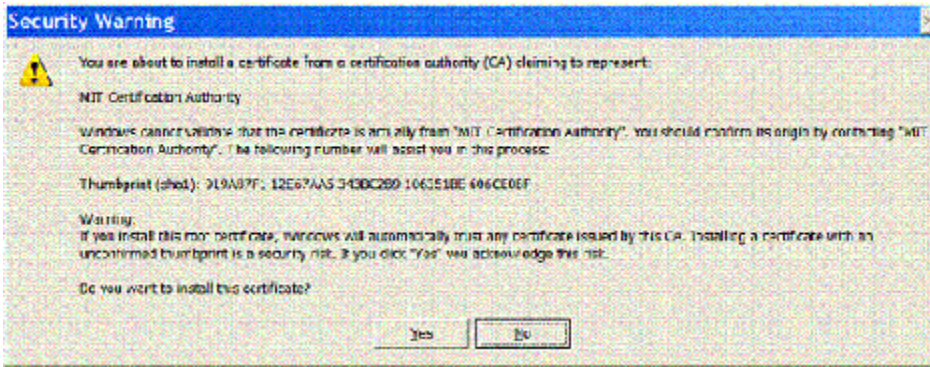
5. Click **Next**.
Result: The second dialog of the Certificate Import Wizard appears.



6. Leave the default setting to "Automatically select the certificate store based on the type of certificate" and click **Next**.
Result: The third and final dialog of the Certificate Import Wizard appears.



7. Click **Finish**.
Result: The Root Certificate Store dialog appears and asks the question: Do you want to ADD the following certificate to the Root Store?



8. Click **Yes**.
Result: A dialog appears indicating the Certificate Import was successful.

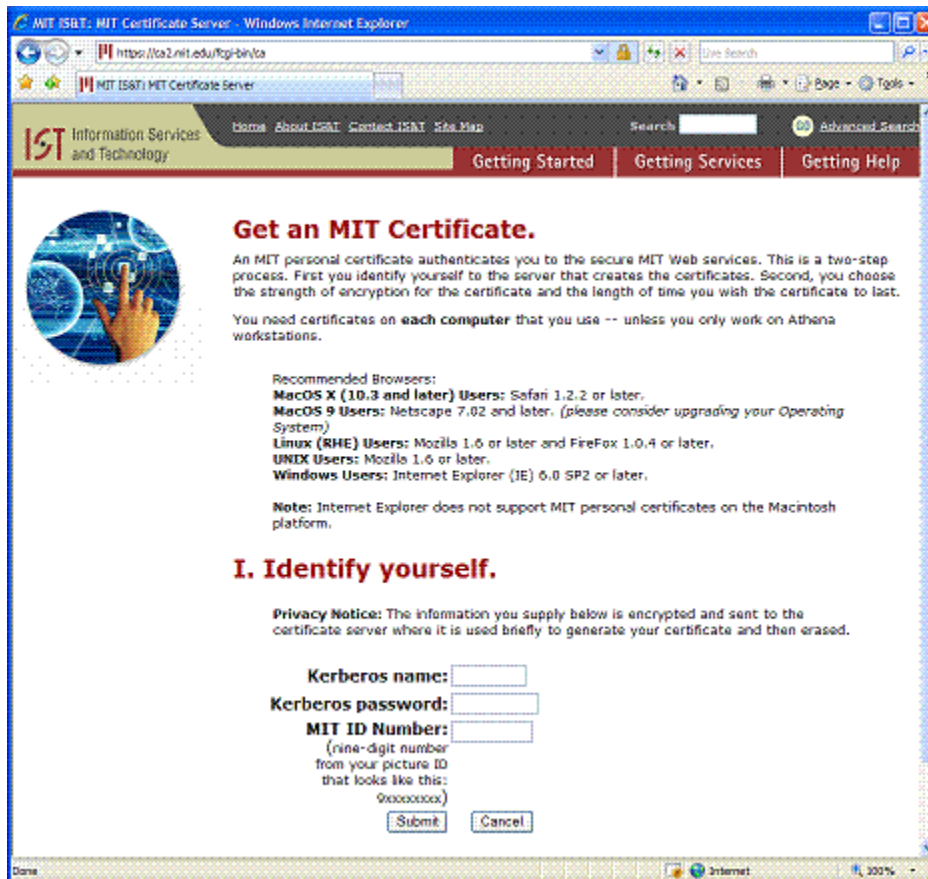


9. Click **OK** and then click **OK** again to close the certificate dialog.
Result: The MIT CA certificate has been installed.

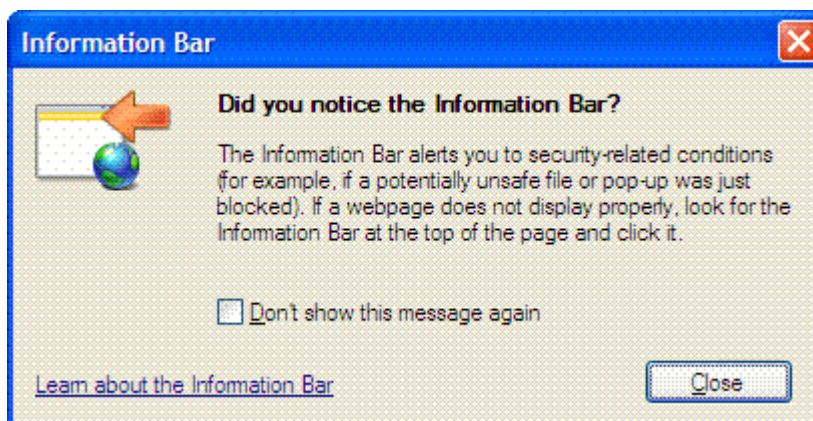
Get the MIT Personal Certificate

The first time you try to get a **new** MIT personal certificate in IE7, you will encounter a security-related action, Certificate Enrollment Control, which did not occur in previous versions of IE. This action is related to authenticating web-browser add-ons, and is part of the Windows ActiveX Control environment. ActiveX enables communication and interaction between software and media components which are to be integrated into a web page.

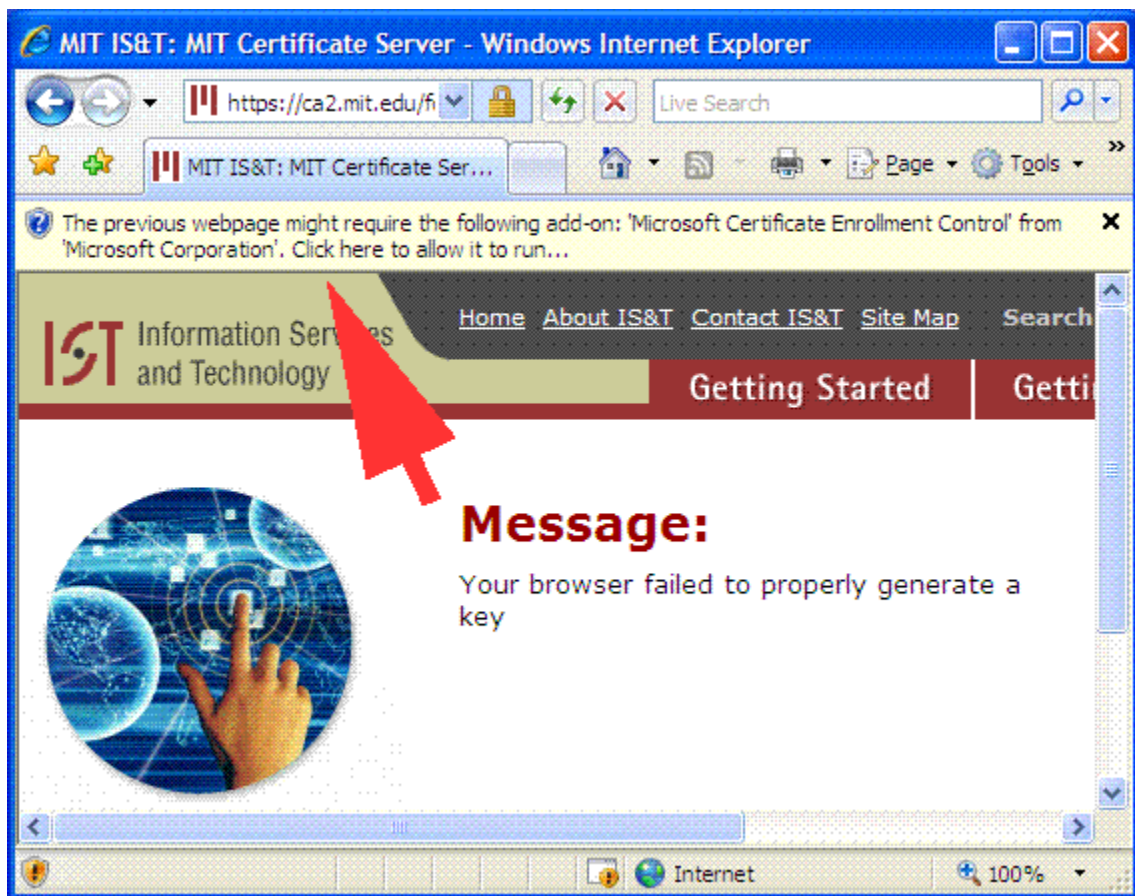
1. To begin the process of getting a new certificate, go to [Certificates at MIT](#).
Result: The Certificates at MIT page is displayed.
2. Click **Get MIT Personal Certificate**.
Result: The following page is displayed.



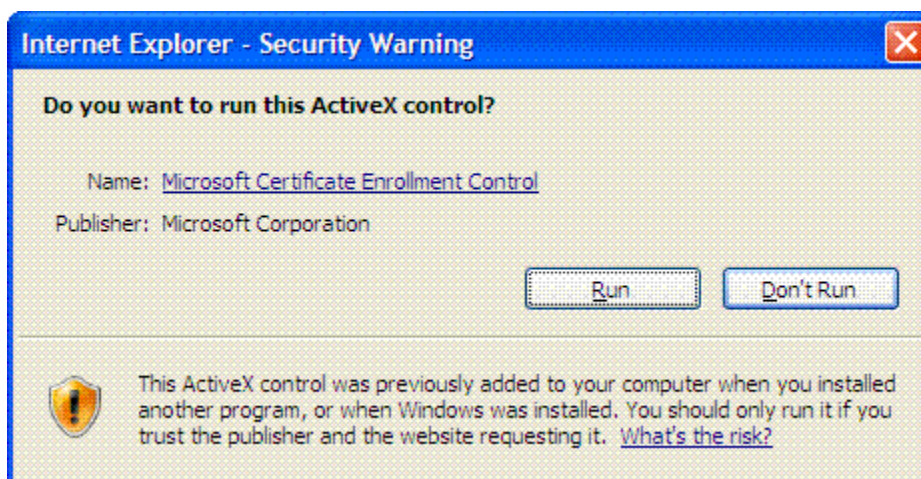
3. Enter your MIT identification information and click **Submit**.
Result: The page Generate a Private Key is displayed.
4. Click **Next**.
Result: The following Information Bar dialog box and web page page are displayed.
5. In the dialog box click **Close**.



Attention! On the web page, direct your attention to the information bar near the top (indicated here by the large arrow). In previous versions of IE the Certificate Enrollment Control has not appeared when getting certificates; it is part of the Windows ActiveX Control environment.



6. To continue the process of getting a certificate, click in the information bar.
Result: A small pop-up menu will appear.
7. In the pop-up menu click **Run ActiveX Control**.
Result: The following security warning appears.

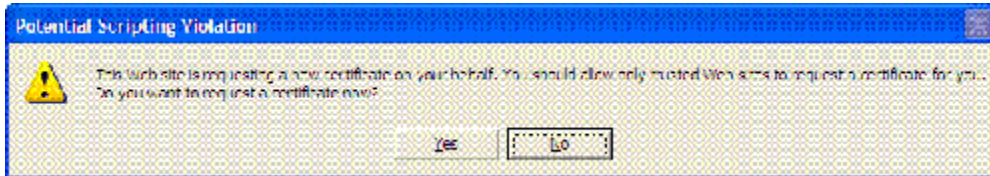


8. Click **Run**.
Result: You will be returned to the page Get an MIT Certificate.

Note: Because ActiveX Control was run for this instance of getting a personal certificate,

in the future, the Certificate Enrollment Control warning should not appear when you get a new personal certificate with this particular IE7 browser.

9. **Re-enter** your information and click **Submit**.
Result: The page Generate a Private Key should be displayed.
10. Click **Next**.
Result: The following warning is displayed.



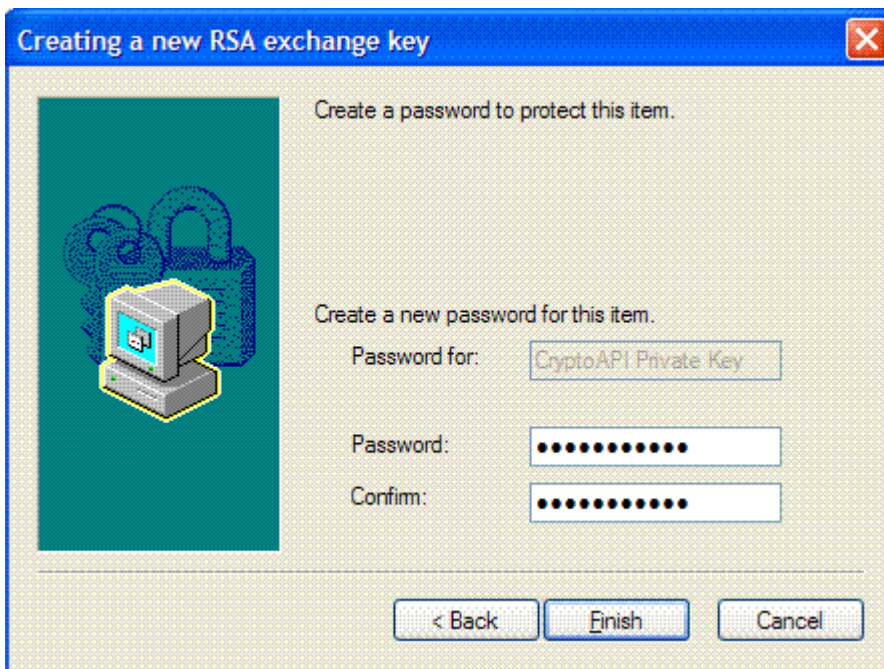
11. Click **Yes**.
Result: The dialog box for creating an exchange key (or browser password) is displayed.



12. IS&T recommends changing the default security level from Medium to High. Click **Set Security Level**.
Result: The dialog box for security level is displayed.



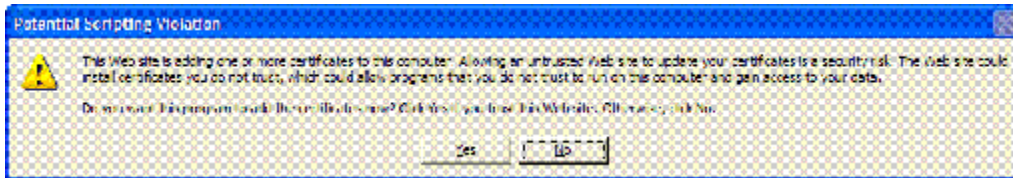
13. Click the radio button for **High**, then click **Next**.
Result: The dialog box to create a browser password is displayed.



14. Enter and confirm your password, then click **Finish**.
Result: You will be returned to the initial exchange key box.

Note: Do not make this the same as your Kerberos password. This password is for your MIT certificates on this particular IE7 browser. When you go to a secure web page requiring your MIT certificate, you will be prompted to enter this password.

15. In the exchange key box, click **OK**.
Result: The following warning is displayed.



16. Click **Yes**.
Result: The MIT page confirming installation of your new personal certificate should be displayed.