

# Constructing the



# Folding Ukulele



designed by  
Brian Chan

# Folding Ukulele



designed by  
Brian Chan

Before you get started...

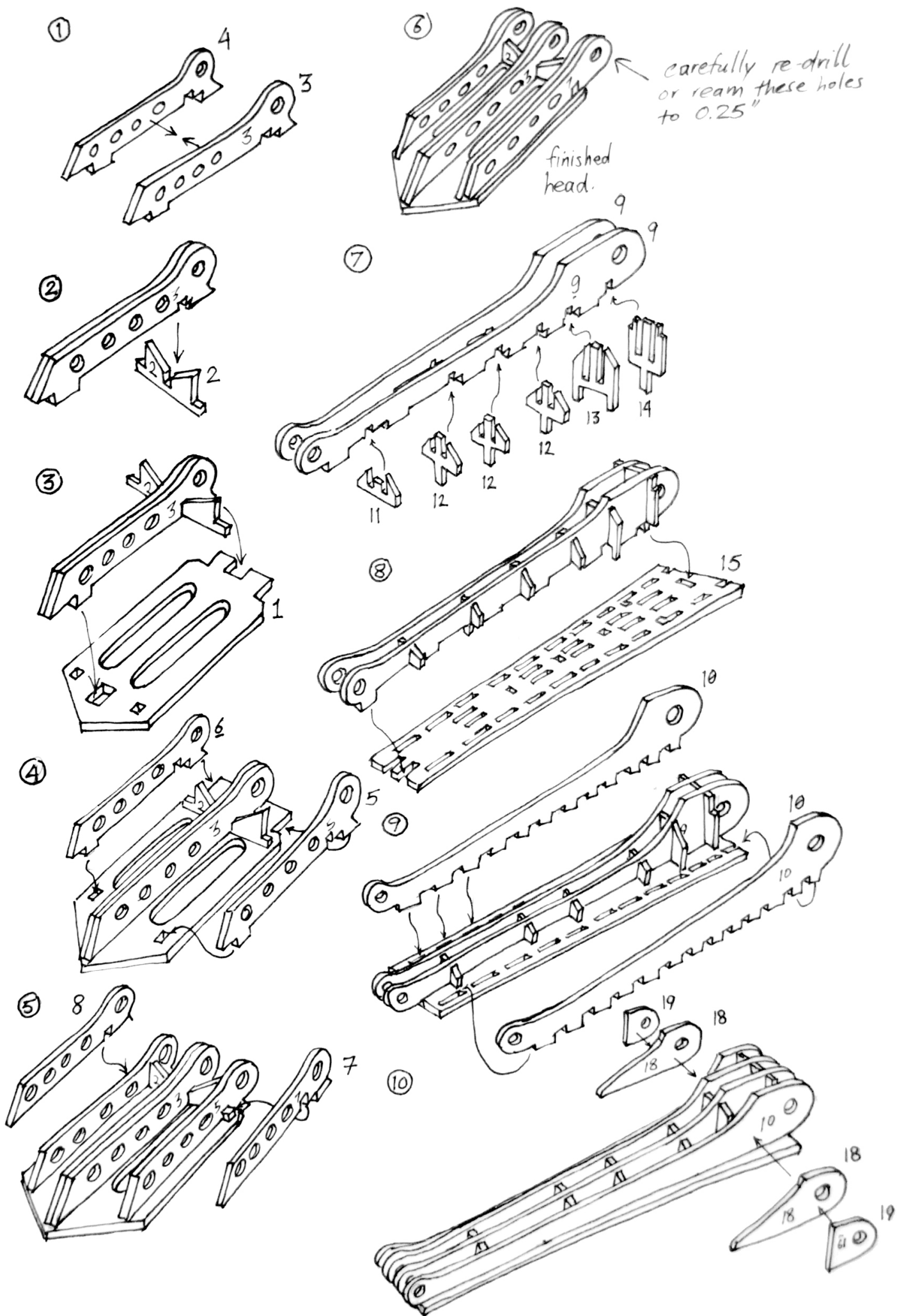
- Please thoroughly read through the instructions before building.
- Test-fit all the pieces before gluing them together.
- Note that all joints are to be glued unless otherwise specified. Pay close attention to the parts that are not to be glued.

You will need...

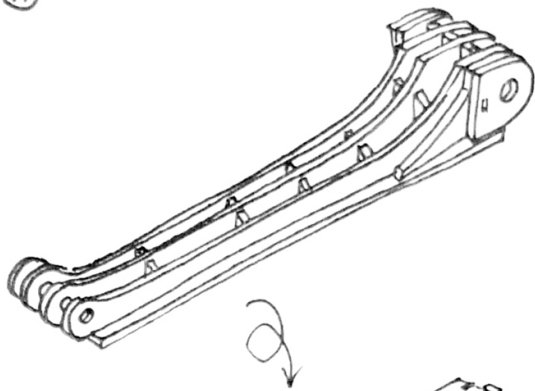
- 1) Folding Ukulele Kit, available from  
<http://ponoko.com/showroom/chosetec>
- 2) Wood glue (such as Titebond II or superglue)
- 3) Four cylindrical magnets, 0.25" diameter and 0.125" thick.
- 4) Sandpaper, 150 grit and 220 grit.
- 5) A small, flat file (like a needle file or slightly larger)
- 6) A set of ukulele strings (or similar gauge fishing line:  
0.024", 0.032", 0.034", and 0.028" diameters)
- 7) Two lengths of 0.25" hardwood dowel - 3.5" long and 1.75" long

Take your time and enjoy the building process, and of course enjoy your Folding Ukulele anywhere you go!

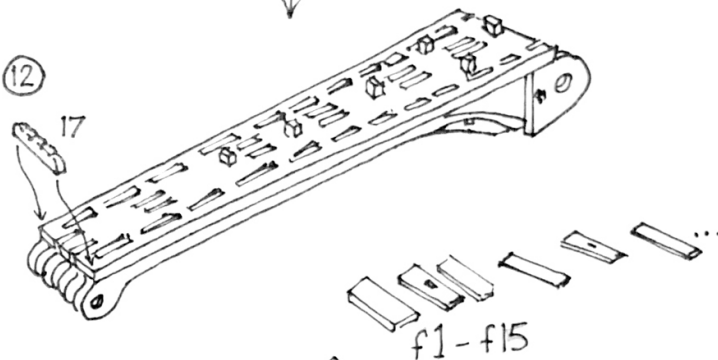
- Brian Chan



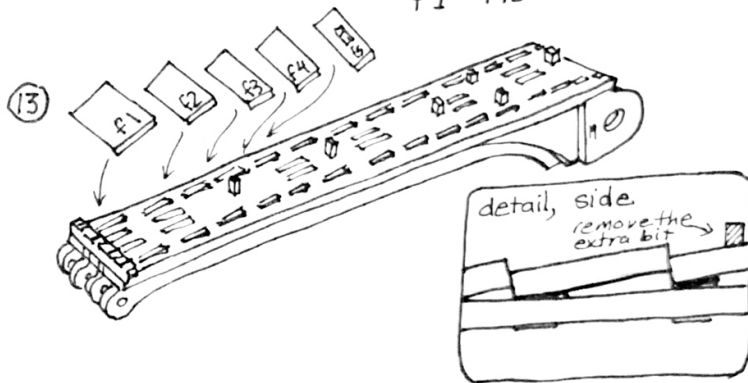
11



12

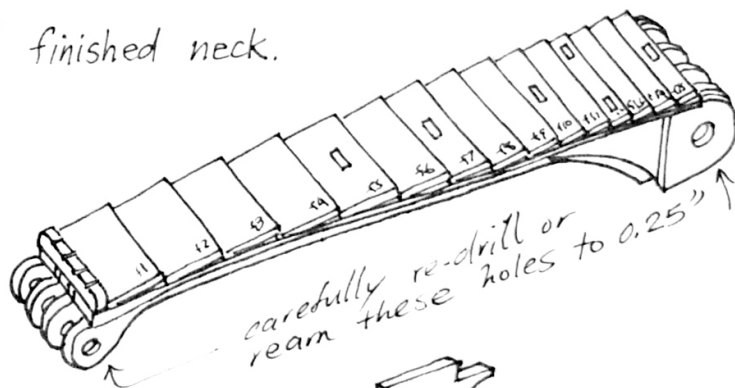


13

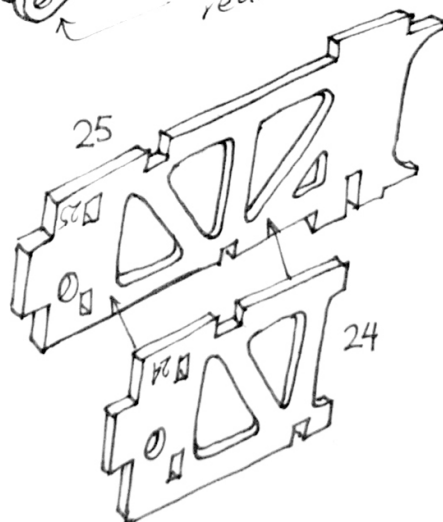


14

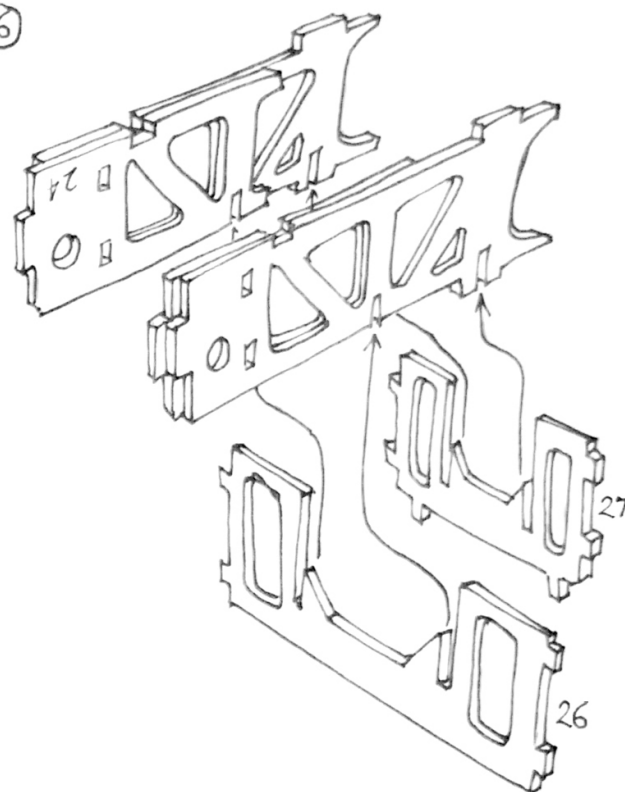
finished neck.



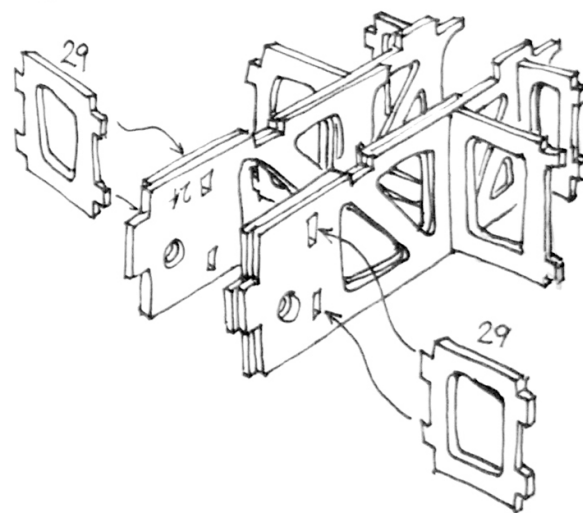
15



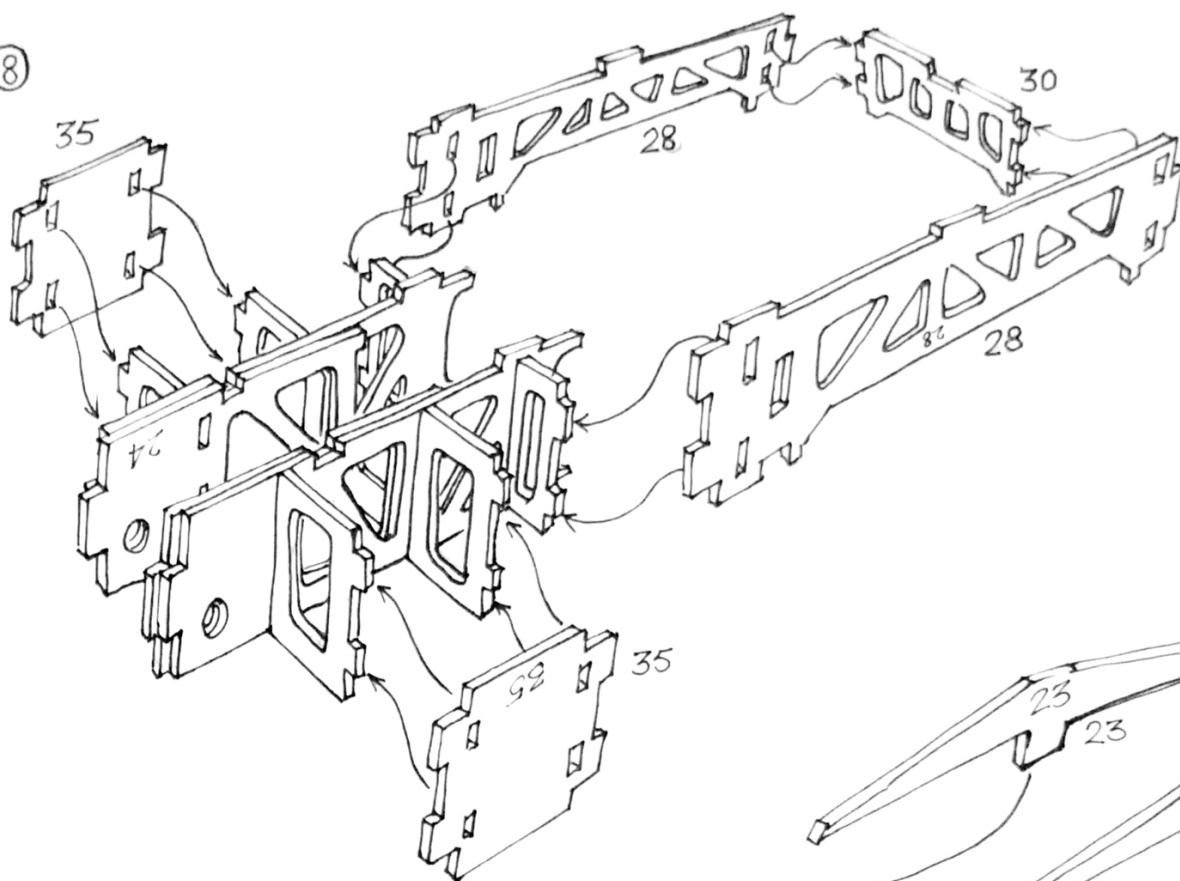
16



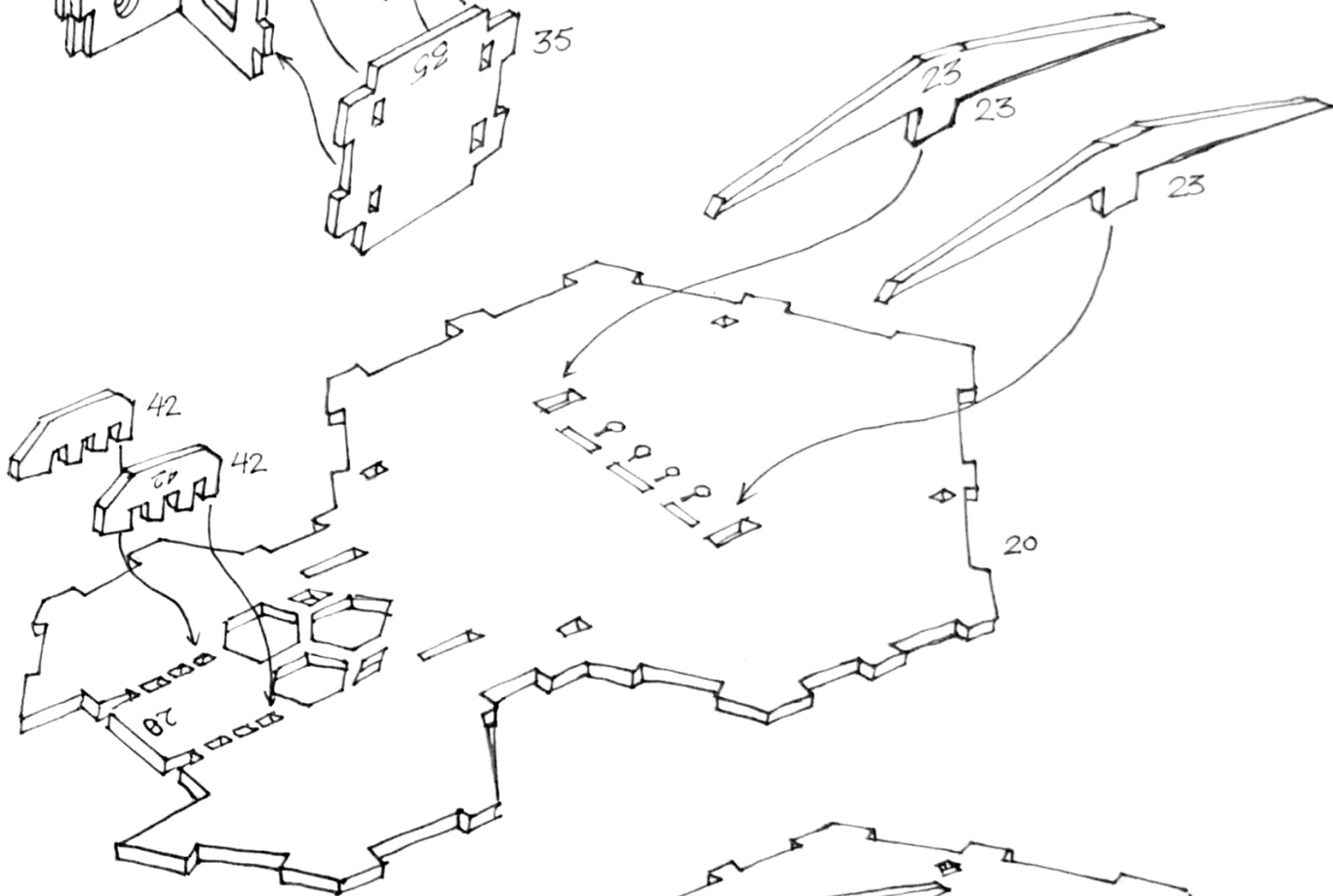
17



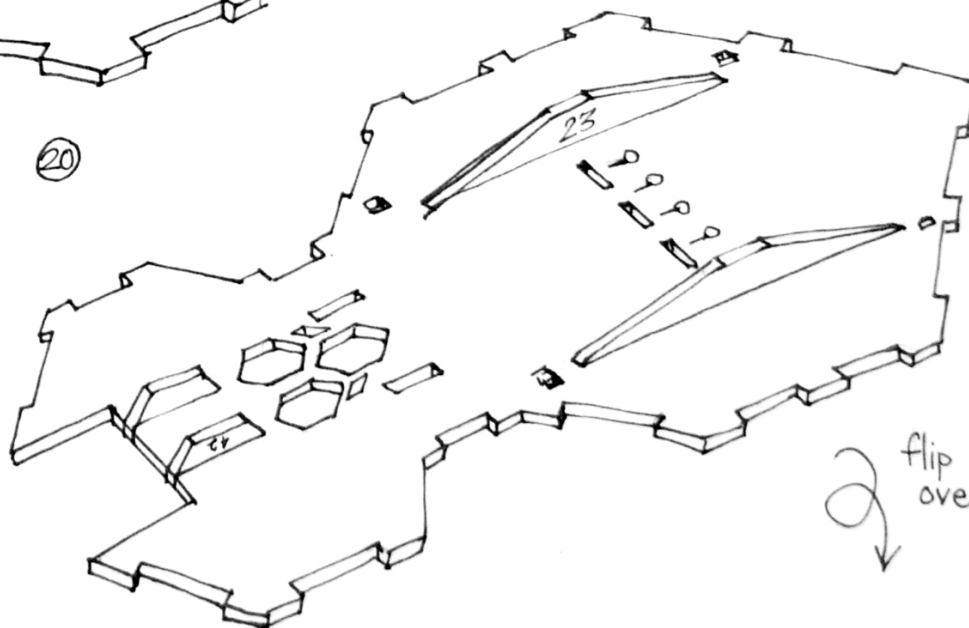
18



19

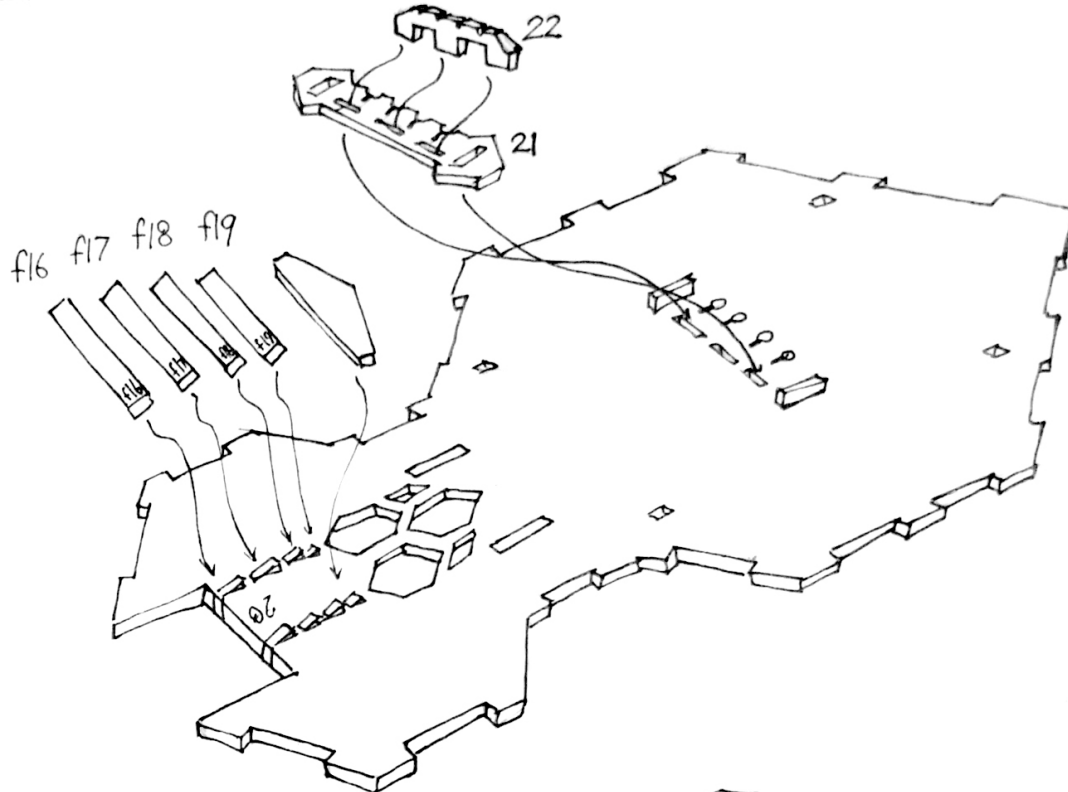


20

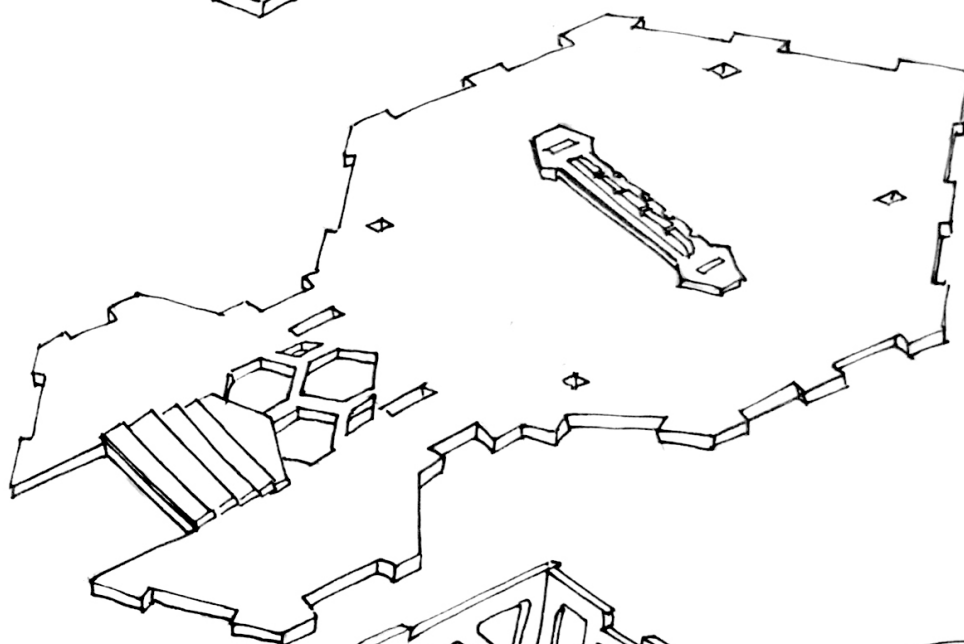


flip over

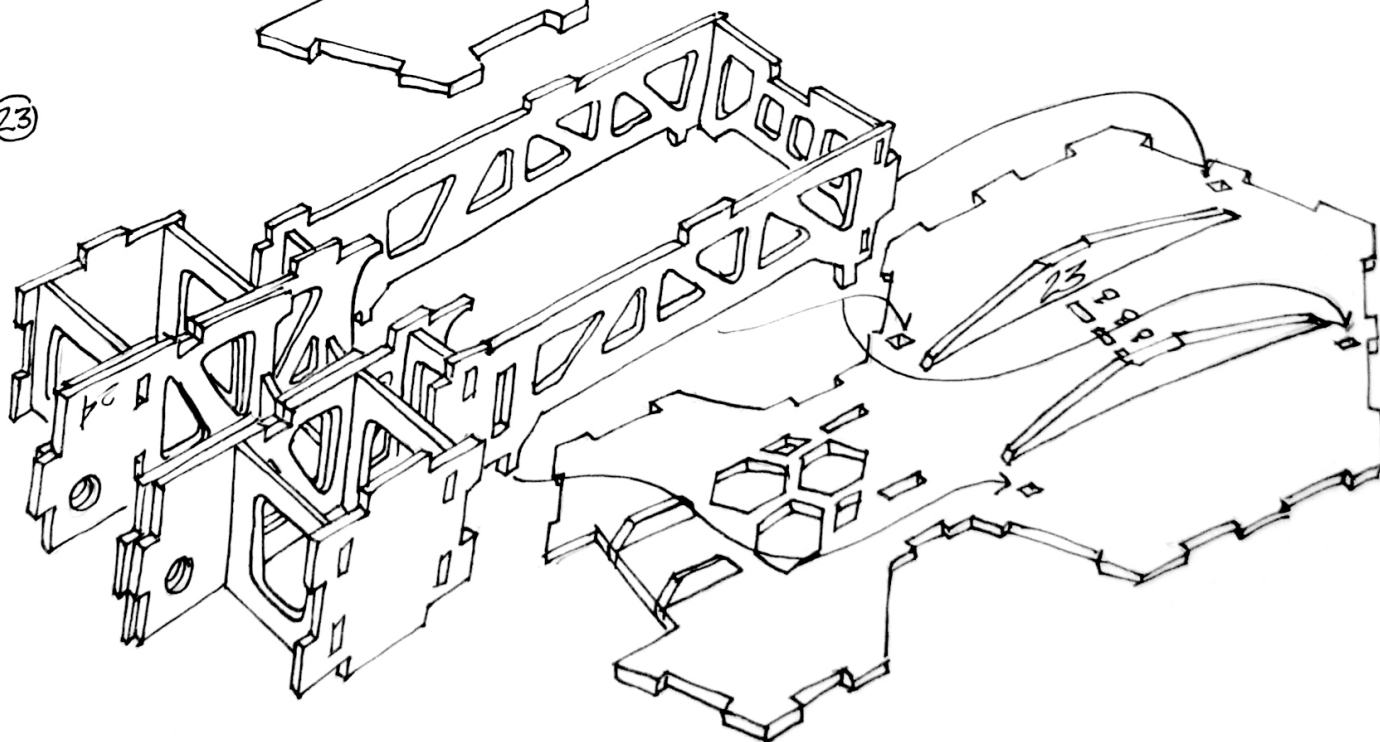
21



22

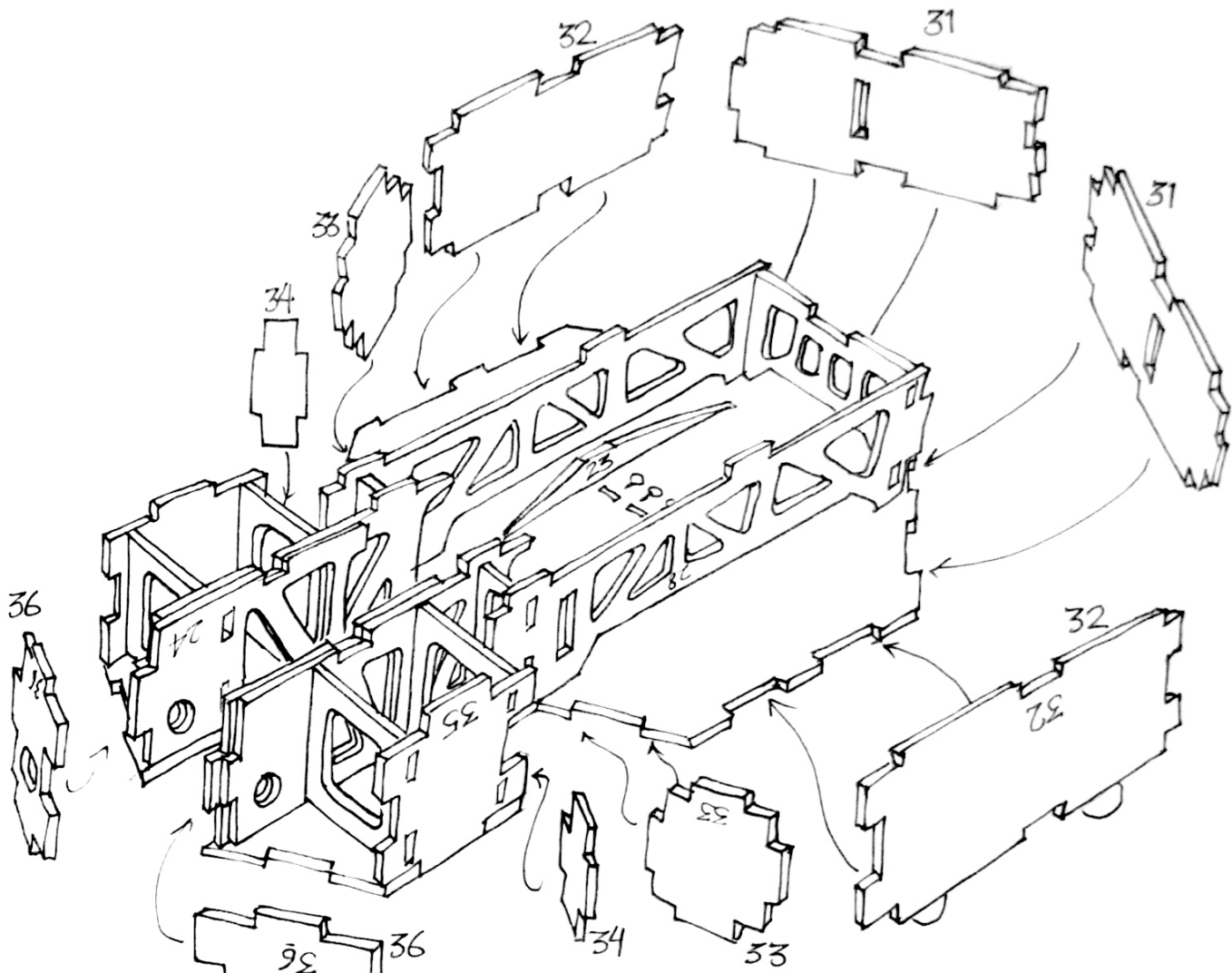


23

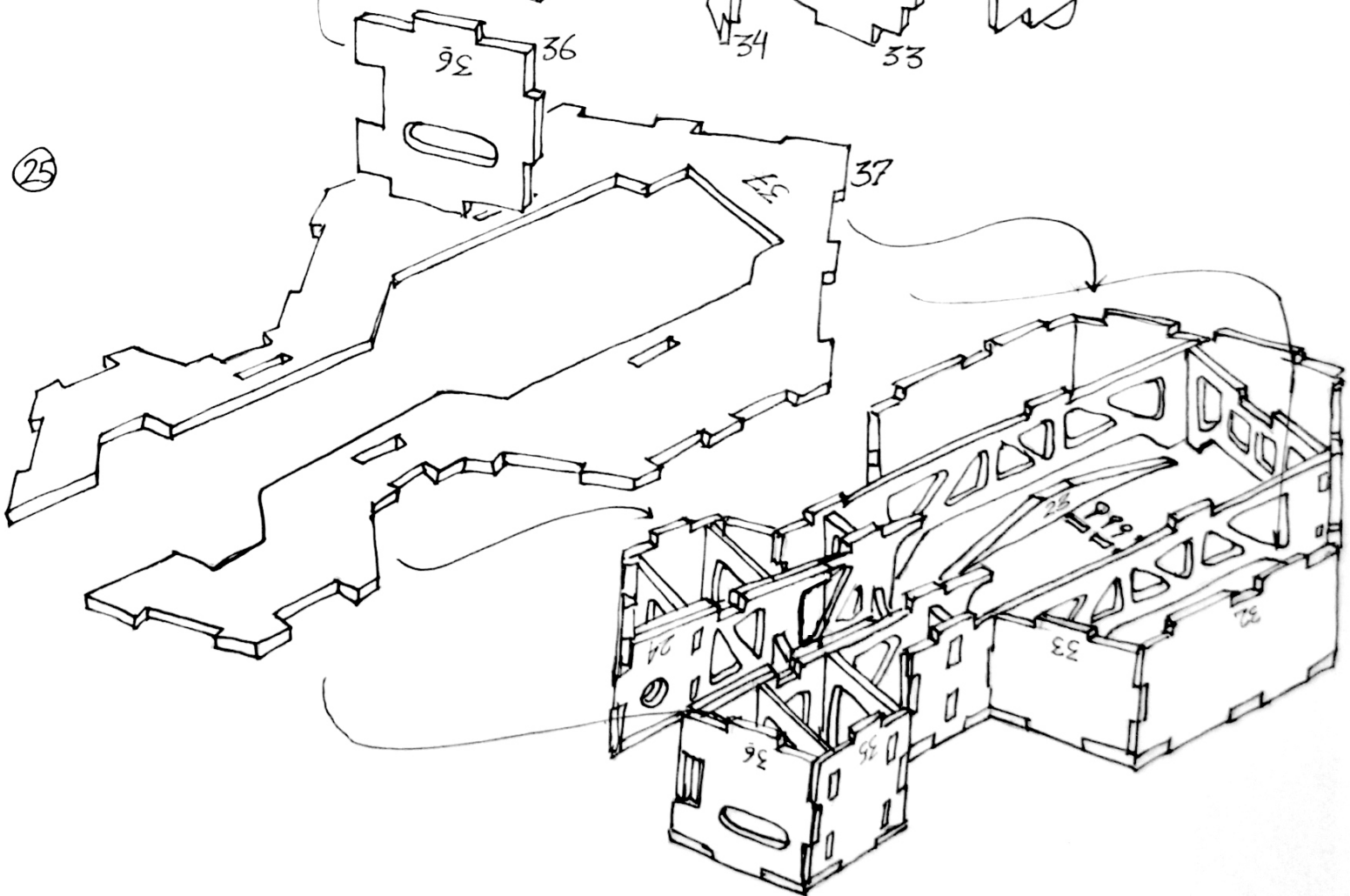




24



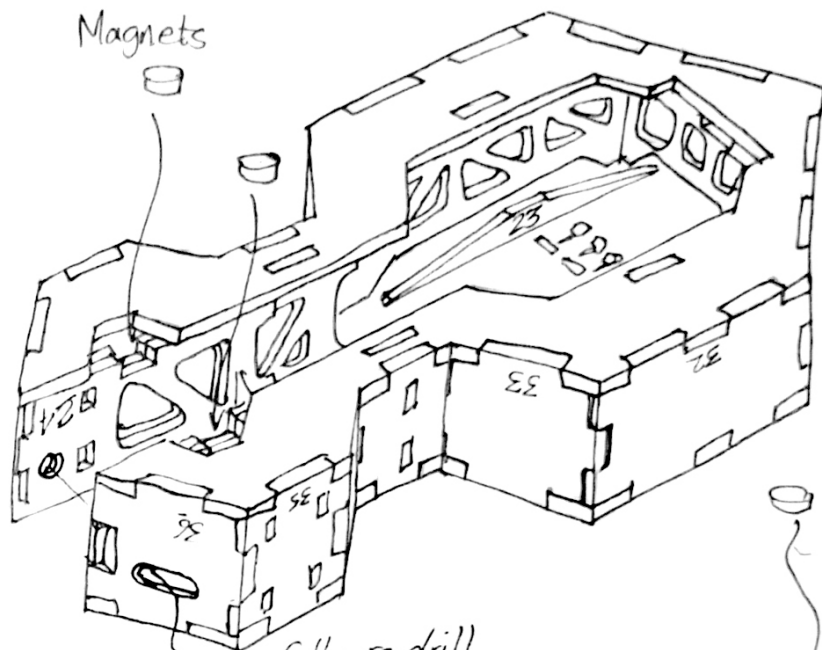
25



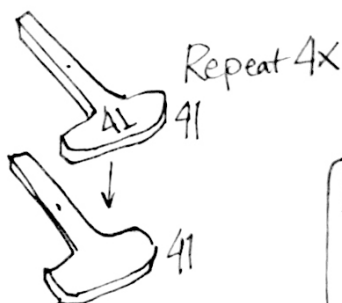
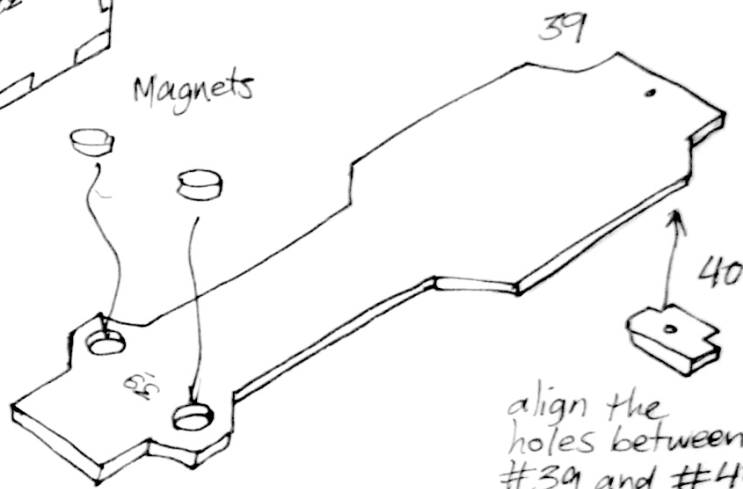
26

\* Glue magnets with cyanoacrylate or epoxy.

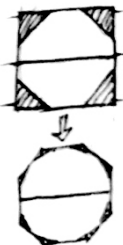
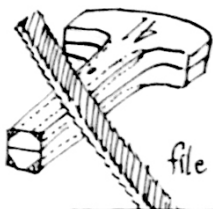
\* Ensure that the magnets are installed so that the back cover (#39) will be held onto the body.



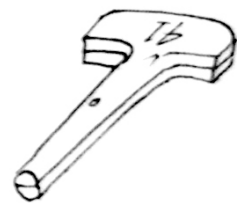
carefully re-drill or ream these holes to 0.25"



### Peg shaping



File the peg into an octagonal cross-section then a round cross-section. Maintain the shallow taper in diameter.

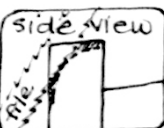
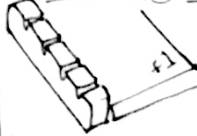


### 27 Final Assembly

USE NO GLUE.

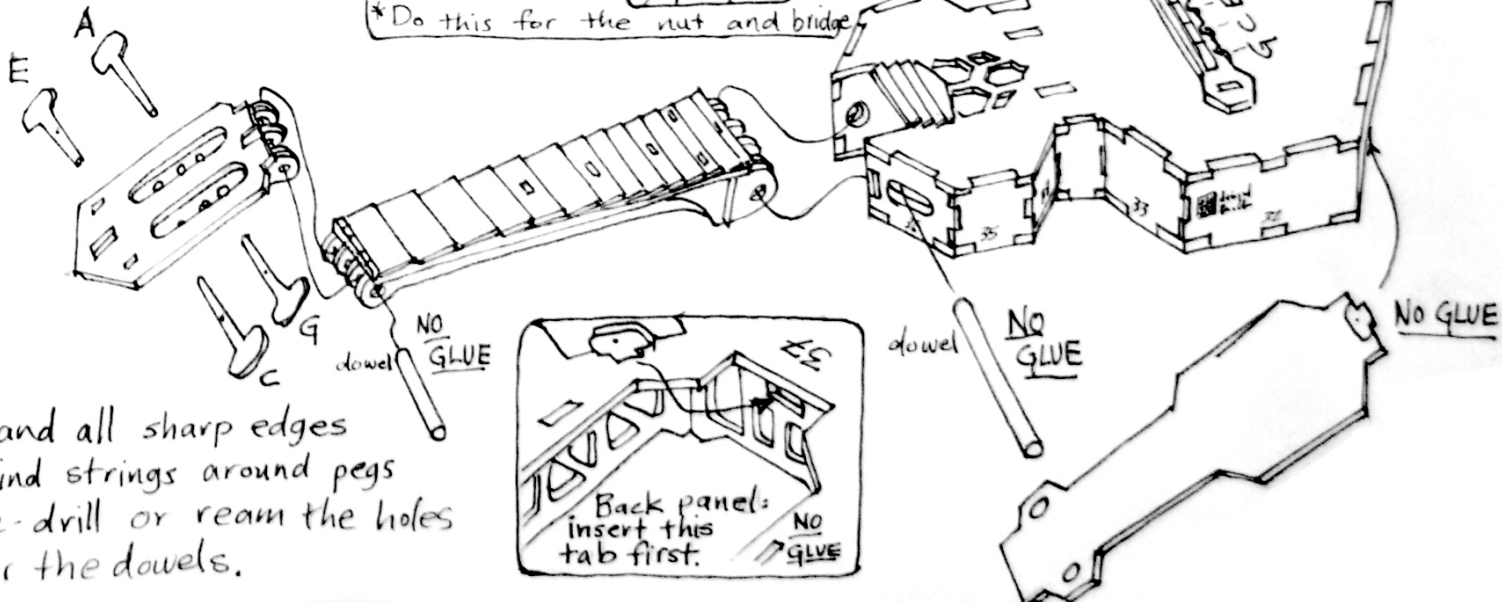
If the dowels do not fit easily, sand them thinner.

### Smoothing the string grooves.

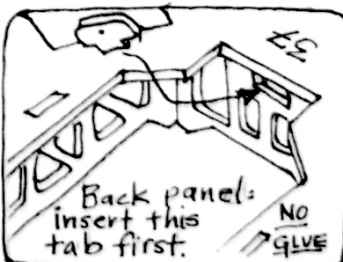


rounded

\* Do this for the nut and bridge



- \* sand all sharp edges
- \* wind strings around pegs
- \* re-drill or ream the holes for the dowels.





*Finished Folding Ukulele.*

