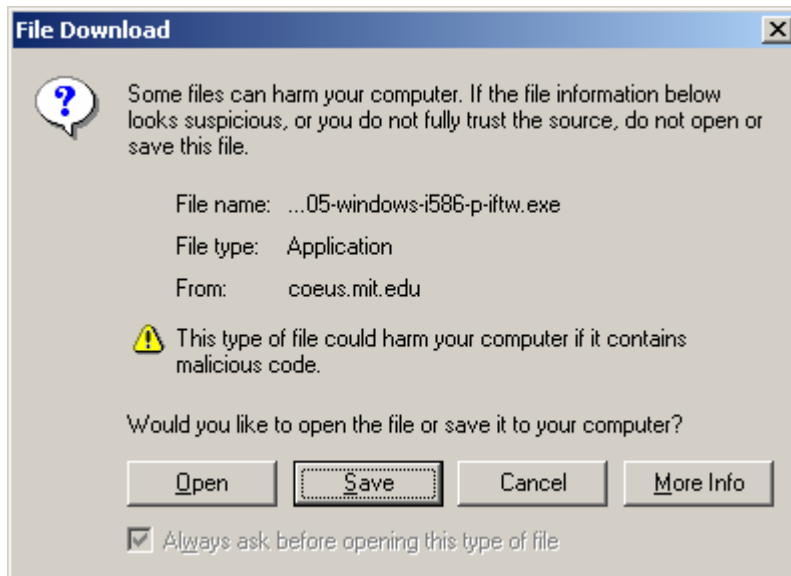
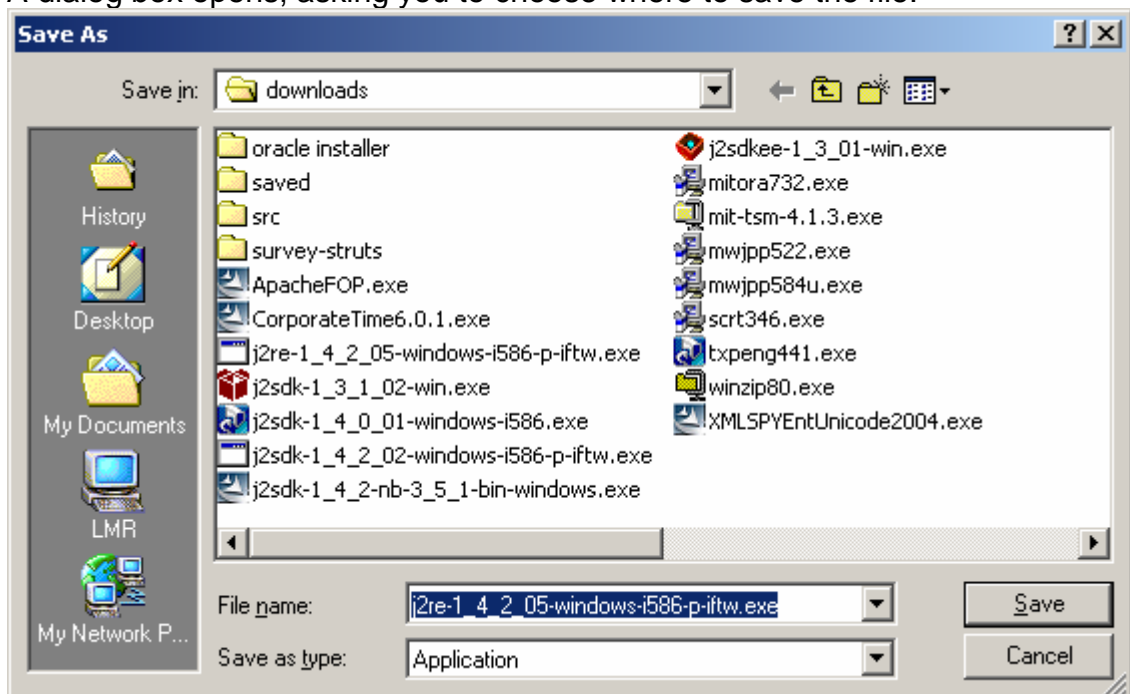


## Instructions for Installing Java Runtime Environment

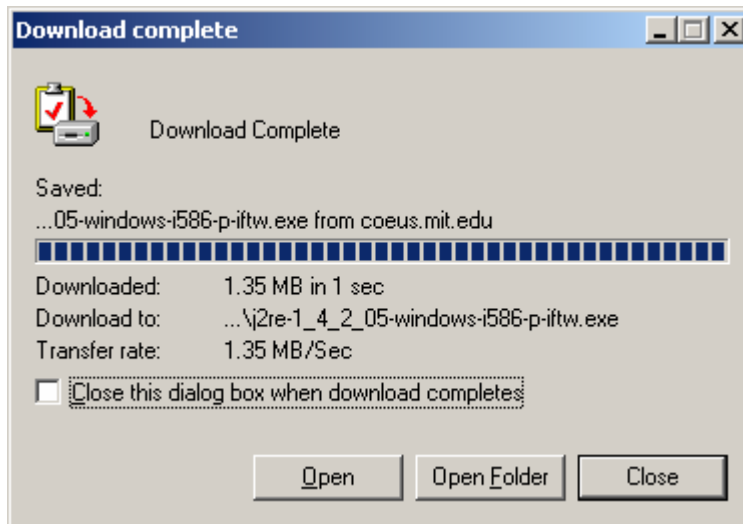
1. From your web browser, access [http://coeus.mit.edu/jre\\_installer/jre-1\\_4\\_2\\_05-windows-i586-p.exe](http://coeus.mit.edu/jre_installer/jre-1_4_2_05-windows-i586-p.exe).
2. You will see this screen:



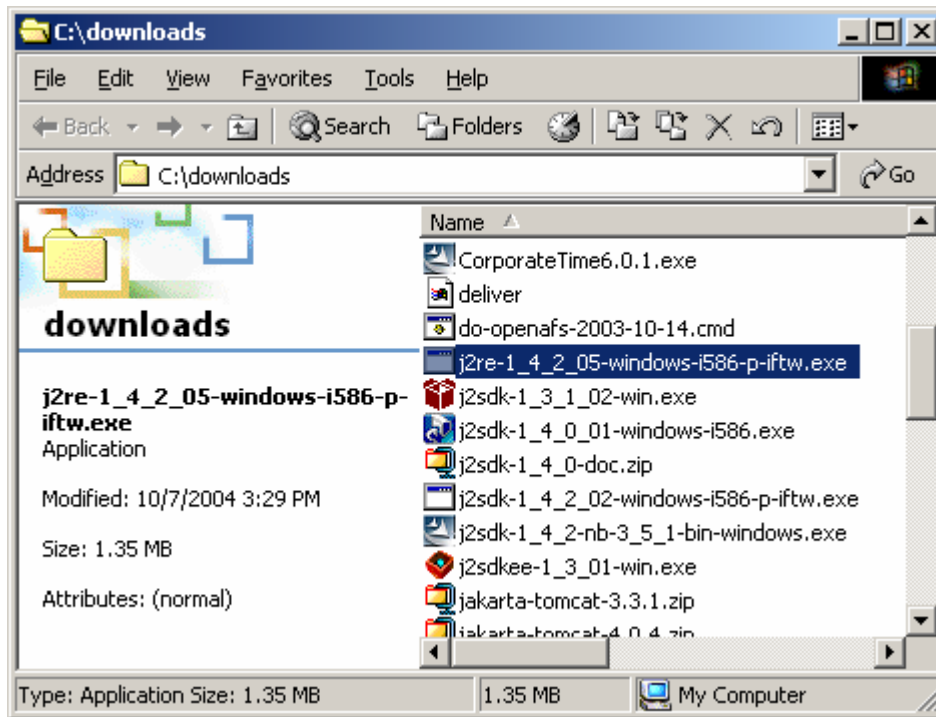
3. Select Save.
4. A dialog box opens, asking you to choose where to save the file.



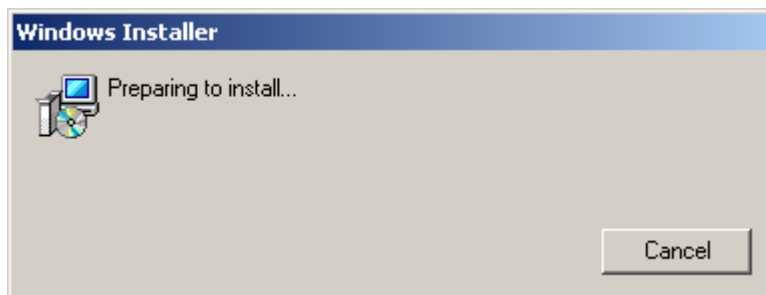
5. Note the location, and select Save.

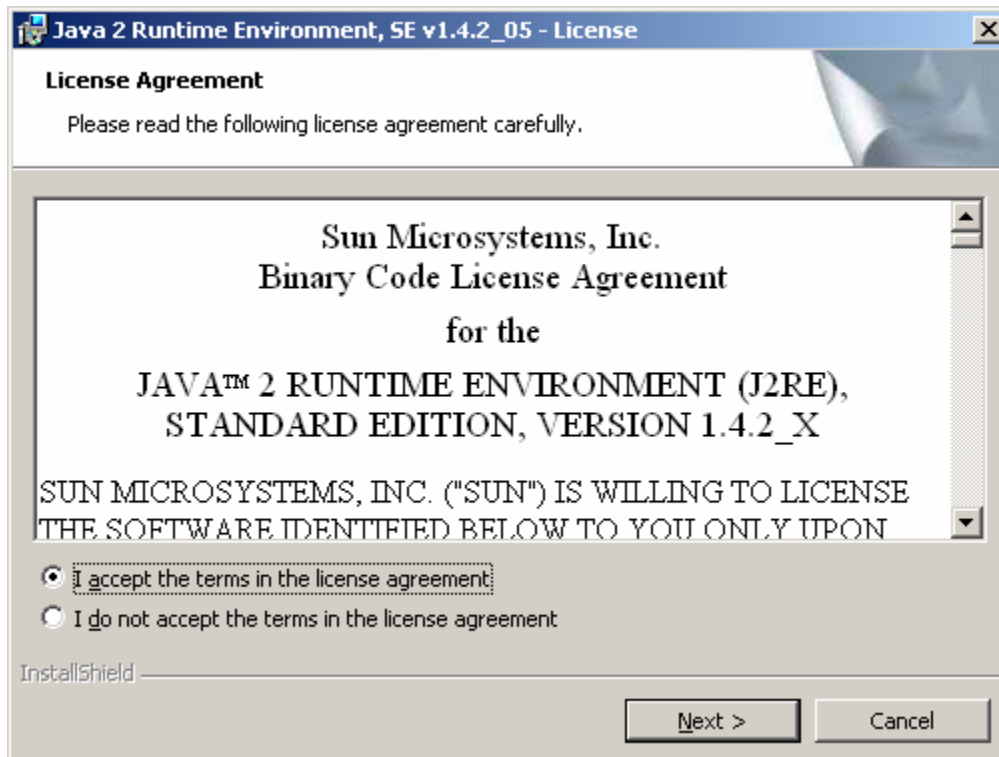


6. Select Open Folder.

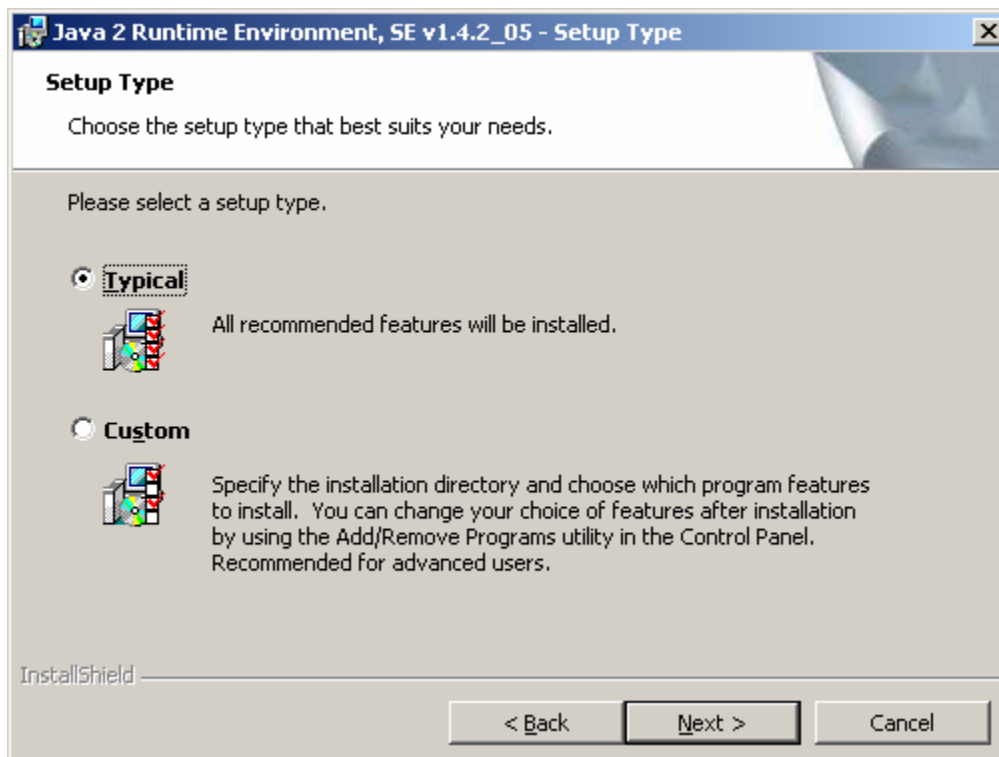


7. Double-click the downloaded file, j2re-1\_4\_2\_05-windows-i586-p-iftw.exe.

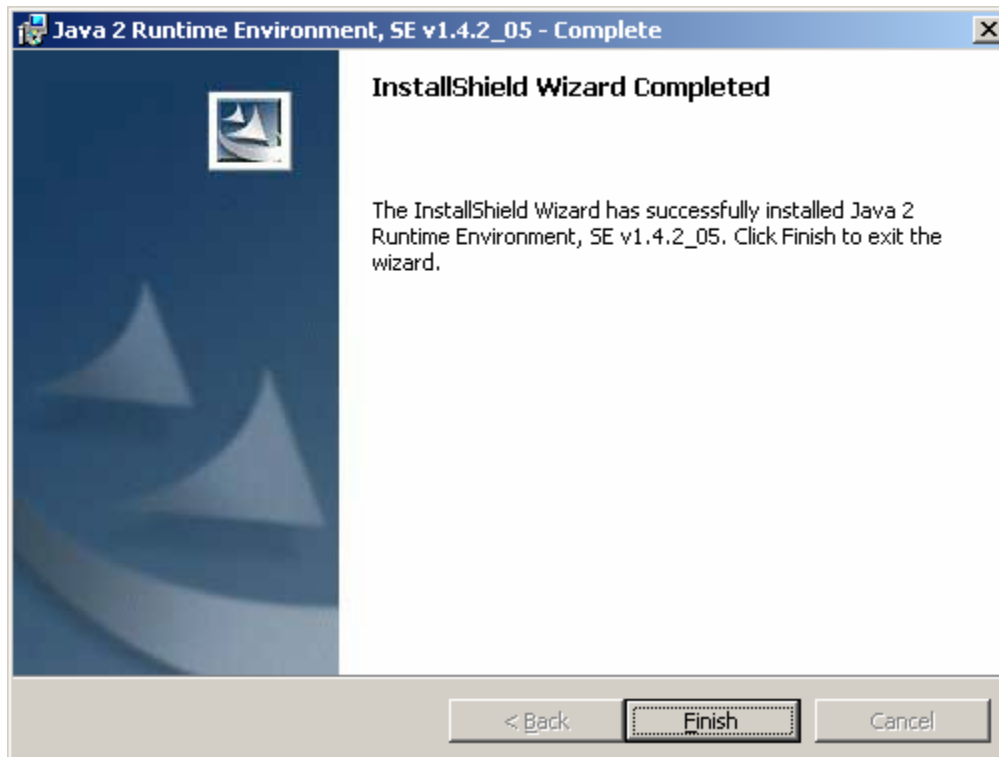




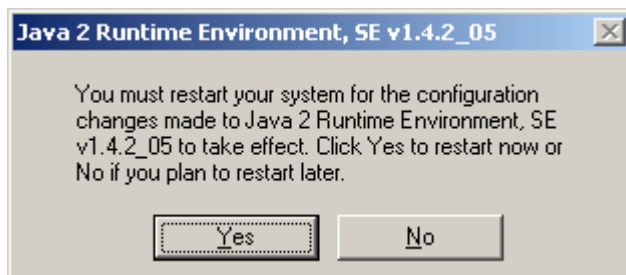
8. Accept the license agreement and select Next.



9. Select Typical Install and select Next.



10. Select Finish.



11. Select Yes to restart your computer before launching Coeus 4.0.