

The MIT Cool Japan research project  
Women's & Gender Studies and  
Comparative Media Studies colloquium series presents:

# Gendering Robots:

# Posthuman Sexism in Japan

a lecture and discussion with

**Prof. Jennifer Robertson**

Anthropology Department  
University of Michigan

**March 5, 2009 (Thursday)**

**5:00 - 7:00 pm**

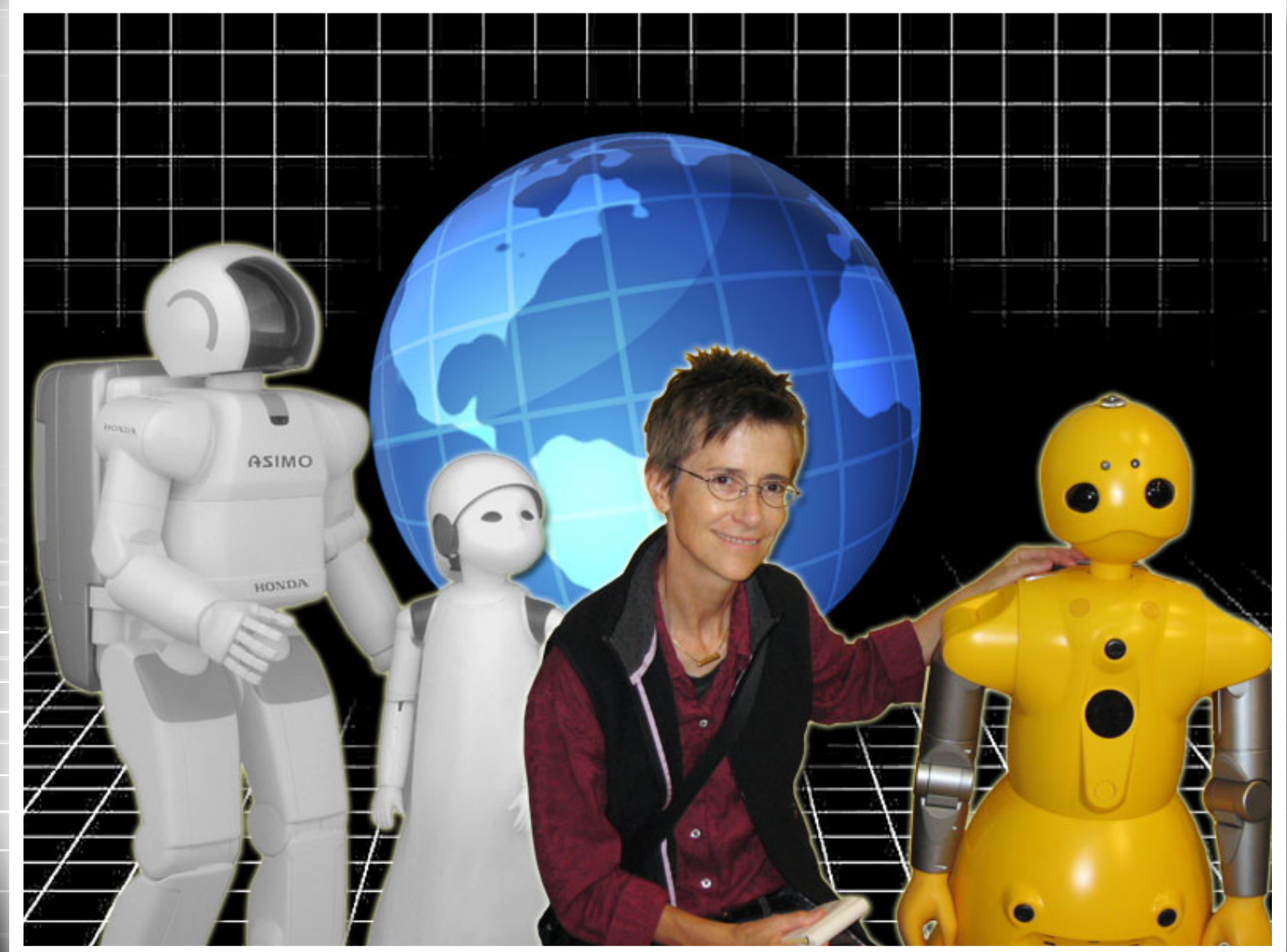
**Room 32-141**

**Stata Center, MIT**

*Free and open to the public*

*Reception to follow*

Robertson explores and interrogates the gendering of humanoid robots manufactured today in Japan for use in the home and workplace. She shows that Japanese roboticists assign gender to their creations based on rigid assumptions about female and male sex and gender roles. Thus, humanoid robots can productively be understood as the vanguard of a "posthuman sexism," and are being developed in a socio-political climate of reactionary conservatism.



**Organized by:**

The MIT/Harvard Cool Japan Research Project  
Contacts: 617-253-4771  
Alison Howard-Yilmaz (alisonhy@mit.edu)  
Prof. Ian Condry (condry@mit.edu)

[www.mitcooljapan.com](http://www.mitcooljapan.com)

**Sponsored by:**

The MIT Japan Program, the Reischauer Institute of Japanese Studies at Harvard, MIT Foreign Languages & Literatures, MIT Program in Women's and Gender Studies, and MIT Comparative Media Studies.

Poster design: Jeffrey Pearlman