

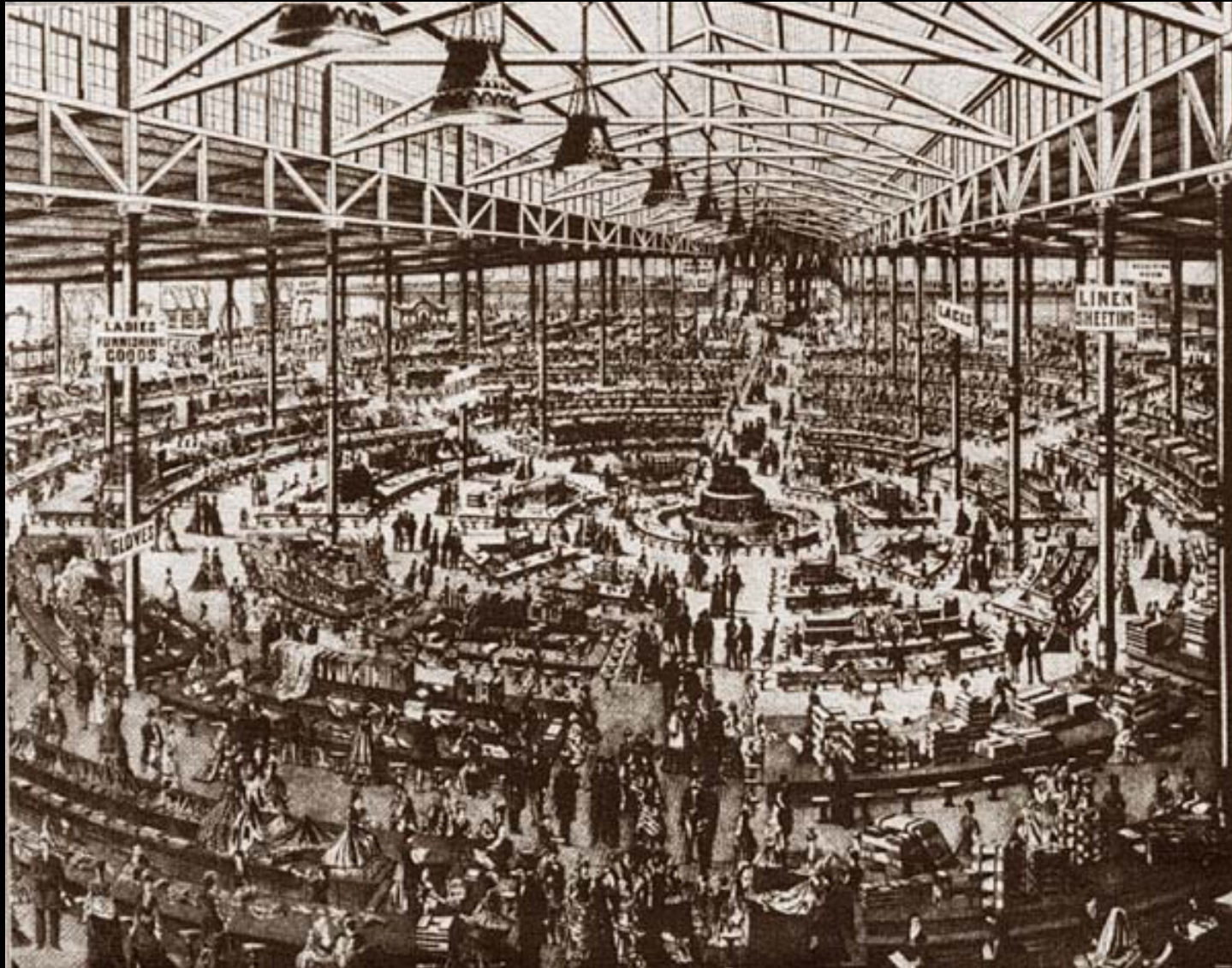
The Rise of the City

21H.102

Transcontinental Railroad (1862-1869)



Wanamaker's Grand Depot, Philadelphia (c. 1876)



Wanamaker's Grand Depot Store (1902)



Marshall Field Wholesale Store, Chicago (built 1885-87)



UNABRIDGED FACSIMILE

CATALOGUE No 57

MONTGOMERY WARD & Co.

LARGEST
MAIL ORDER
BUSINESS
IN THE U.S.



SUPPLIES FOR
EVERY TRADE
AND CALLING
ON EARTH

Catalogue
and Buyers' Guide

Spring & Summer

1895

WITH AN INTRODUCTION BY BORIS EMMET

Kern County, CA (c. 1885)



William Jennings Bryan (1896)



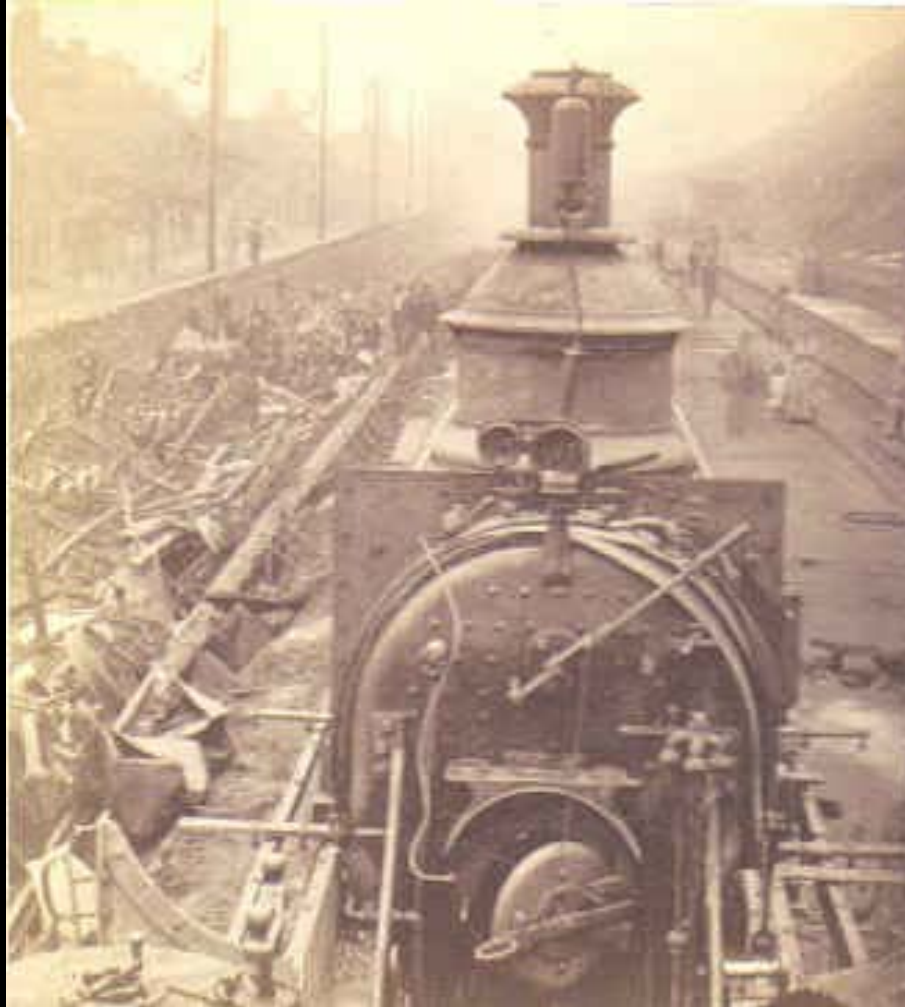
Thomas Watson (1856-1922)



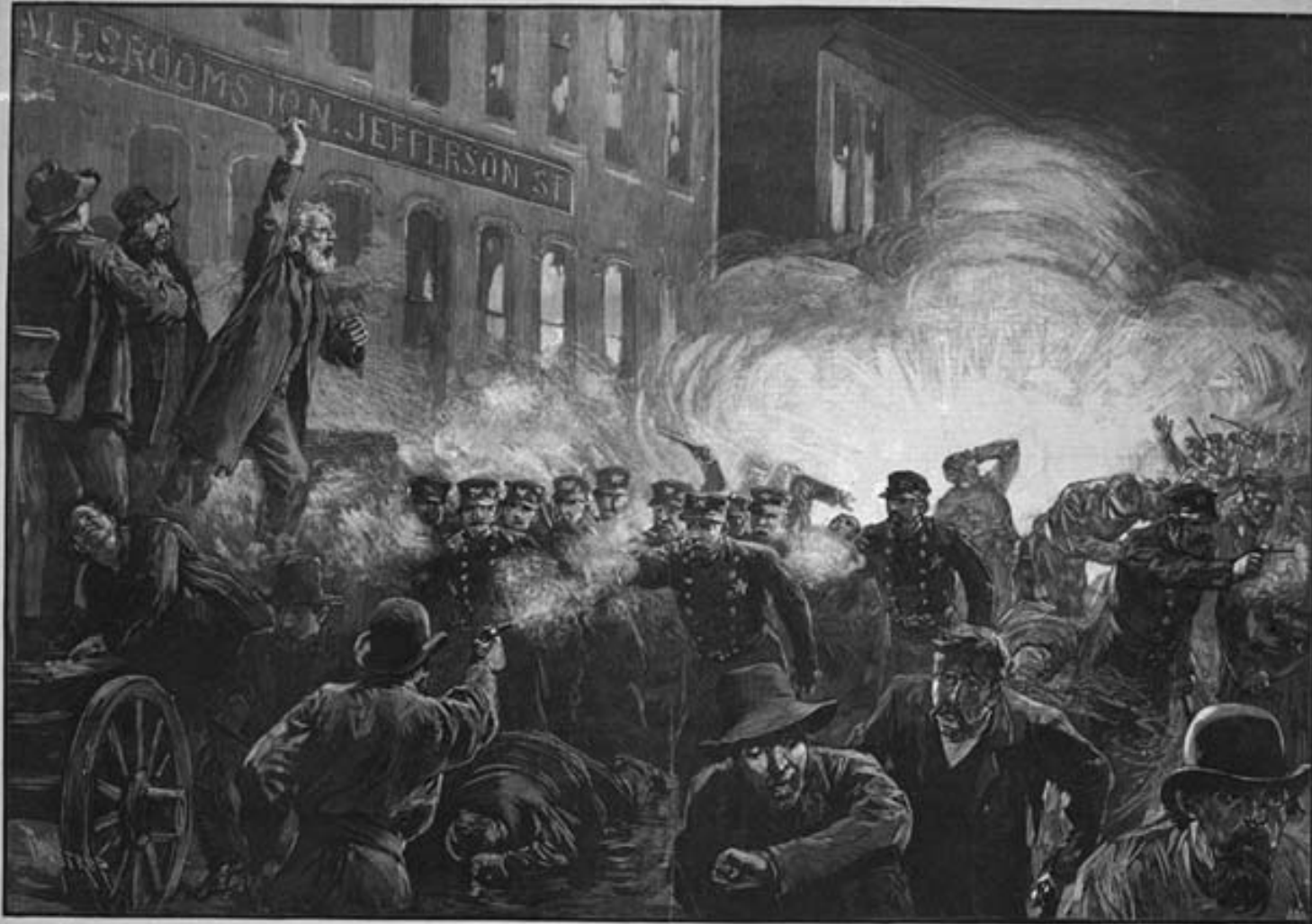
Great Railroad Strike, Pittsburgh (1877)



Great Railroad Strike, Pittsburgh (1877)



Haymarket Riot, Chicago (1886)



THE KNIGHTS RIDE IN CHICAGO—A DYNAMITE BOMB EXPLODING AMONG THE POLICE—Drawn at T. de Witt Johnson and Published by H. Johnson—(See Page 101.)

Knights of Labor



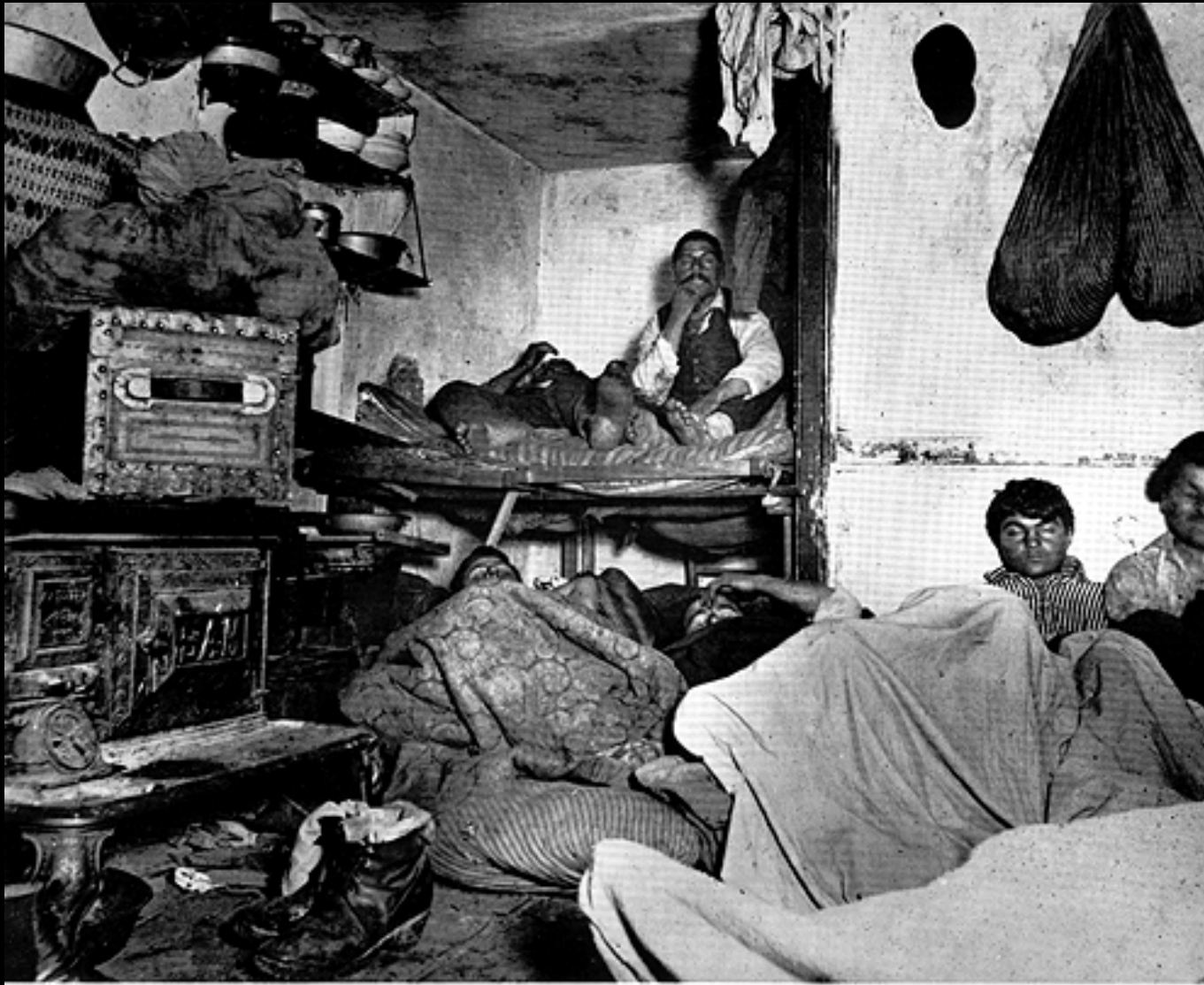
Samuel Gompers (1850-1924)



Riis, “A Flat in the Pauper Barracks with All Its Furniture” (c. 1890)



Riis, “Five Cents a Spot” (c. 1890)



Jacob Riis, “Dens of Death” (c. 1898)



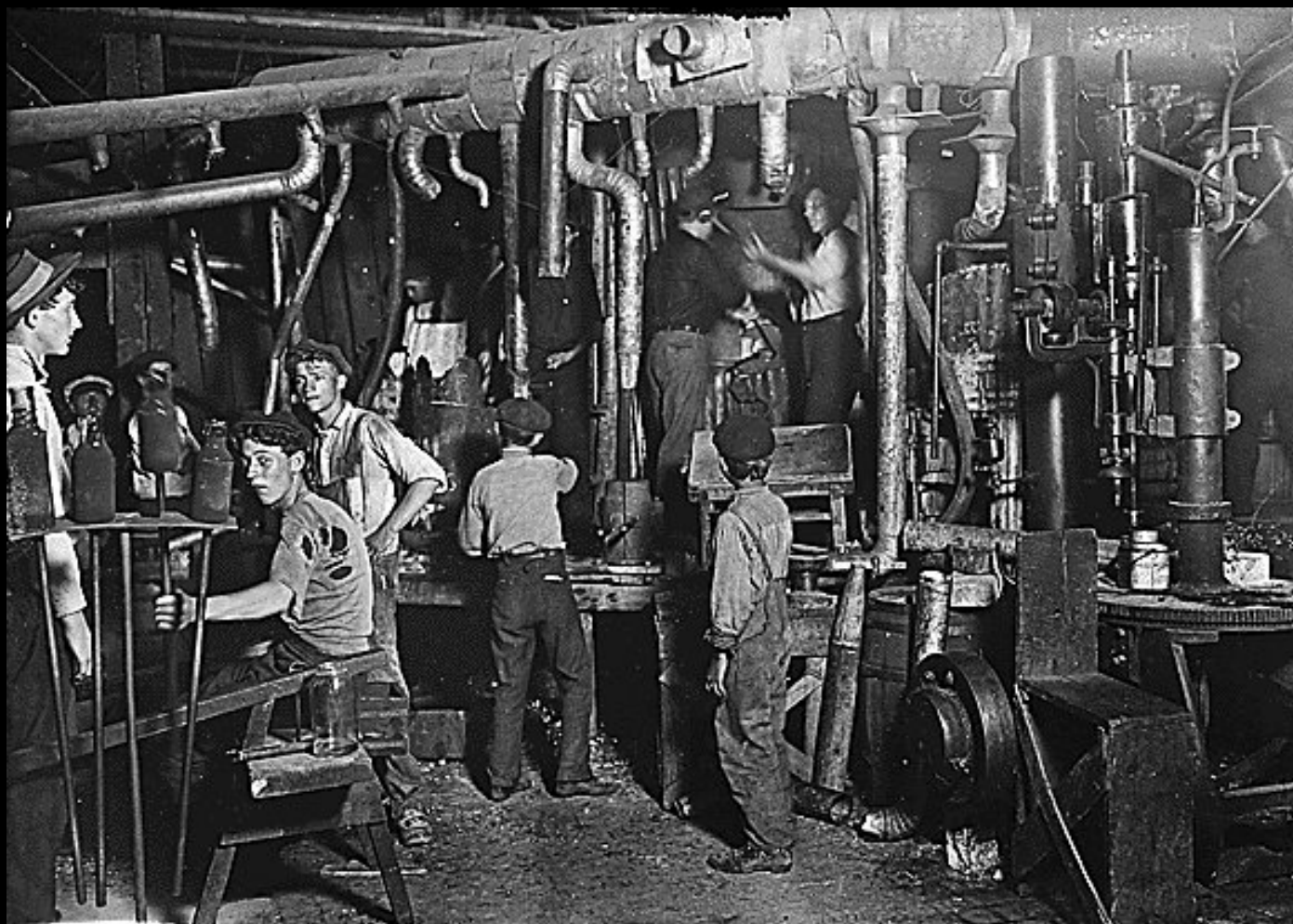
Lewis Hine, Immigrant family at Ellis Island (1905)



Ellis Island (c. 1908)



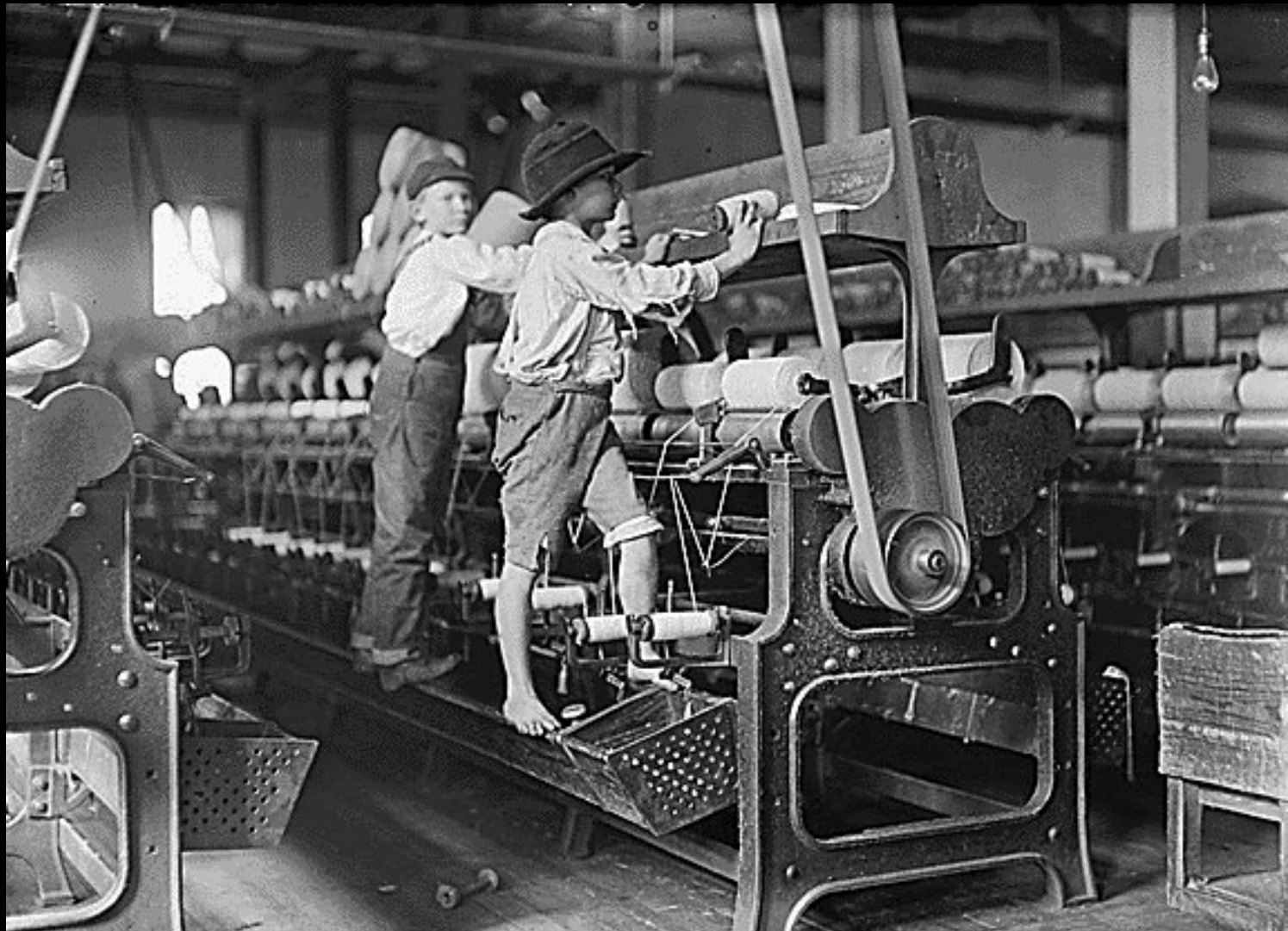
Hine, Indiana Glass Works, 9 p.m. (1908)



Hine, Rhodes Manufacturing Co., Lincolnton, NC



Hine, Bibb Mill, Macon, GA (1909)



Hine, Pennsylvania Coal Company (1911)



Lewis Hine, Manuel the young shrimp picker, 5 years old (1911)

