

Arc/INFO and ArcView Implementations of the Draft USGS Color Standard (Open-File Report 99-430)

Nathan A. Niemi
Department of Earth, Atmospheric, and Planetary Sciences
Massachusetts Institute of Technology
77 Massachusetts Avenue
Cambridge, MA 02139
niemi@mit.edu

July 11, 2002

Requirements

These instructions assume that you already have at least a passing familiarity with Arc/INFO or ArcView, although the instructions aim to be clear enough to lead you through the installation of these color files even if you have never completed this process before. We also assume that you have Arc/INFO or ArcView installed on your computer; these files will be of little use to you if you don't. The shadeset file for Arc/INFO was created with the SHADEEDIT module in Arcplot. It should work with all versions of Arc/INFO through 8.0.1 on Windows platforms and all versions of Arc/INFO on Unix-based machines. The ArcView color palette file is compatible with ArcView 3.2 and earlier on both Windows and Unix platforms. My familiarity with the newer Windows-based ArcGIS is insufficient to allow a conclusive statement about the utility of either of these files on that software, but I would be greatly surprised if neither one is compatible with ArcGIS.

Before beginning the installation, please download the appropriate files. For Arc/INFO, download the shadeset export file, `cmymcolor.e00`. For ArcView, download the color palette file, `cmymcolor.avp`. Graphical references of the colors contained in these files are also available, and may be of much utility. These references are available in Postscript and PDF format. I also strongly recommend the original USGS CMYK Color Chart in PDF format.

Links

`cmymcolor.e00` — <http://web.mit.edu/dtfg/ftp/cmymcolor/cmymcolor.e00>
`cmymcolor.avp` — <http://web.mit.edu/dtfg/ftp/cmymcolor/cmymcolor.avp>
`cmymcolor.eps` — <http://web.mit.edu/dtfg/ftp/cmymcolor/cmymcolor.eps>
`cmymcolor.pdf` — <http://web.mit.edu/dtfg/ftp/cmymcolor/cmymcolor.pdf>
USGS Standard — http://geopubs.wr.usgs.gov/open-file/of99-430/of99-430_colorchart.pdf

Arc/INFO CMYCOLOR Shadeset

Place the file `cmycolor.e00` in the directory in which you intend to use it, or, for easier accessibility, place the file in the `$ARCHOME\symbols` directory. (For Windows machines, this is generally `C:\arcexe80\symbols\`). If this directory does not exist, search your machine for the file `plotter.shd` and place `cmycolor.e00` in the directory where that file resides. If you are running Arc/INFO on a Unix-based platform, contact your System Administrator or Arc/INFO administrator to find where the `$ARCHOME\symbols` directory resides. After placing `cmycolor.e00` in the appropriate directory, start Arc/INFO. Set your workspace to the directory where you placed `cmycolor.e00`, e.g.

```
Arc: w c:\arcexe80\symbols
```

The next step is to import the `cmycolor.e00` file:

```
Arc: import shadeset cmycolor.e00 cmycolor.shd
```

The shadeset has now been successfully imported, and, if it was imported into the home symbol directory, should be available from all Arc/INFO workspaces on the computer. To use the shadeset, redirect Arc/Info to an active workspace, for example

```
Arc: w c:\workspace
```

The shadeset will be available through the Arcplot module of Arc/INFO for coloring areal fills, such as polygons. Since the `cmycolor` shadeset needs all 999 color spaces available in Arcplot, and since the shadeset is most useful if the shadesymbol numbers match those on the USGS chart, as well as the charts provided through MIT, it is necessary to clear any existing shadesets out of the system before loading the `cmycolor` shadeset. The following commands show how to complete the installation:

```
Arc: arcplot
Arcplot: shadedelete all
Arcplot: shadeset cmycolor
```

You can view the colors in the shadeset on the screen with the following commands:

```
Arcplot: display 9999 3
Arcplot: symboldump shade screen
```

If you wish to make the cmycolor shadeset your default shadeset on starting Arcplot, this can be done by creating a .arcplot start-up file in your \$ARCHOME directory. Details can be found in the ArcDoc help files.

ArcView Color Palette File

Place the file cmycolor.avp in the ArcView symbol directory. For Windows machines, this is commonly C:\ESRI\AV_GIS30\ARCVIEW\symbols. If this directory does not exist, search for default.avp, and place cmycolor.avp in the directory where this resides. If you are running ArcView on a Unix-based machine, check with your System Administrator for the location of the default ArcView symbol directory.

Once you have installed cmycolor.avp in the correct directory, start ArcView. Open a new or existing view and then either enter Ctrl + P on the keyboard, or, from the Window pull-down menu choose Show Symbol Window. When the symbol window appears, select the 'palette' on the right-hand side of the top toolbar (Fig. 1).

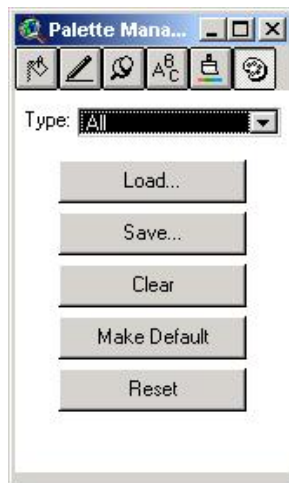


Figure 1. Arcview Symbol Window. Select the 'palette' at the upper right to display this page of the window.

From the Type : pull-down menu select Color (Fig. 2).

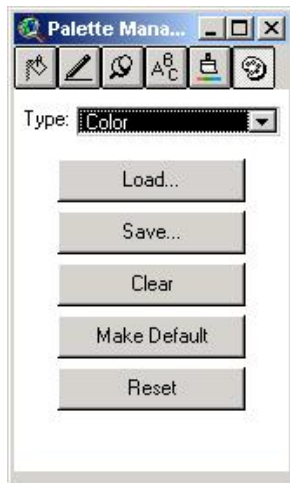


Figure 2. Arcview Symbol Window. The Type : has been changed from All to Color (cf. Fig. 1). To add the colors in cmycolor.avp, select Clear to empty the existing color palette, the select Load . . . to add the cmycolor palette.

Now select Clear to empty the default color palette loaded into the symbol window (Fig. 2). Once this has been cleared, add the cmycolor color palette by selecting Load . . . (Figs. 2 and 3).

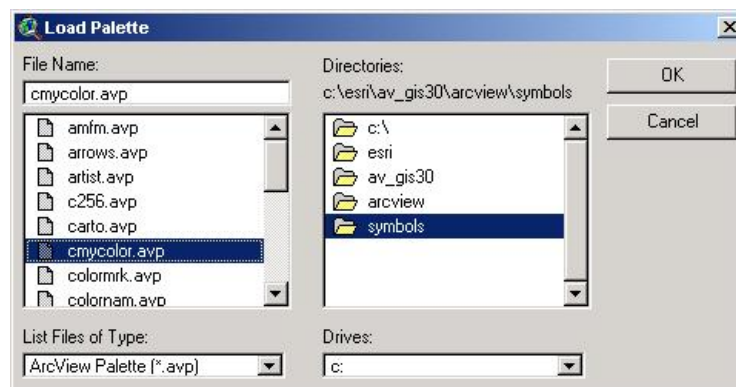


Figure 3. The Load Palette window. Set the directory to C:\ESRI\AV_GIS30\ARCVIEW\symbols, then select cmycolor.avp and choose OK.

Set the Load Palette directory to C:\ESRI\AV_GIS30\ARCVIEW\symbols, and

choose cmycolor.avp. Now click OK. You can view the cmycolor palette that you have just loaded by selecting the 'paintbrush' button to the left of the 'palette' button (Fig. 4). Loading of the palette is now complete.

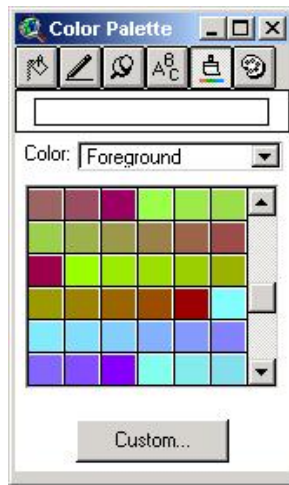


Figure 3. ArcView Symbol Window showing color palette after loading cmycolor.avp.