



Greening Your MIT Department

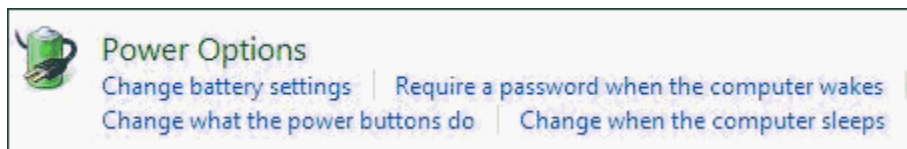
Computer Energy Saving Setting Instructions – Vista

Power management and energy saving recommendations for computers using Windows Vista from MIT's IS&T.

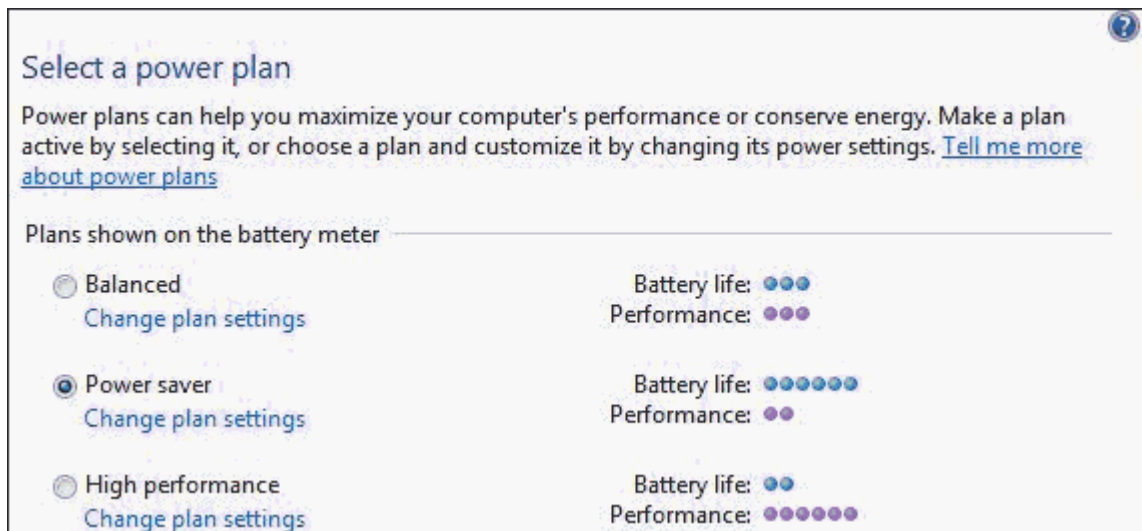
Configuring Energy Savings Mode For Windows Vista

Below are the steps for configuring the energy savings mode on your computer with Windows Vista.

1. Go to **Control Panel >System and Maintenance**. Locate and click on the **Power Options** icon.



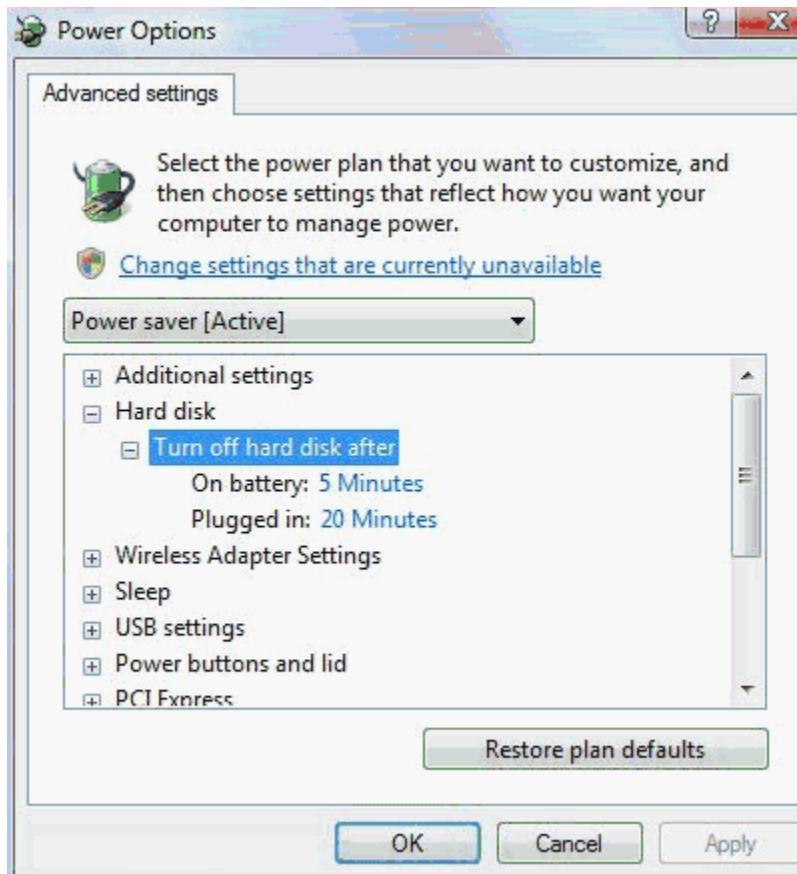
Result: The **Select a power plan** screen appears.



2. Click the **Power Saver** button.
Result: The **Change settings for the plan: Power saver** screen appears.
3. IS&T recommends configuring the sleep and display settings as follows:
 - o Turn off the display: On battery **3 minutes**, Plugged in **10 minutes**.
 - o Put the computer to sleep: On battery **15 minutes**, Plugged in **1 hour**.



4. If you do *not* want advanced power settings, click **Save changes**.
5. If you want advanced power settings, click **Change advanced power settings**.
Result: The **Advanced settings** screen appears.
6. IS&T recommends that you **Turn off hard disk after**:
 - o **On battery**: 5 minutes
 - o **Plugged in**: 20 minutes



7. Click **OK**.