



## Greening Your MIT Department

### Computer Energy Saving Setting Instructions

Power management and energy saving recommendations for your Windows XP computer from MIT's IS&T.

## Configuring Energy Savings Mode for Windows XP

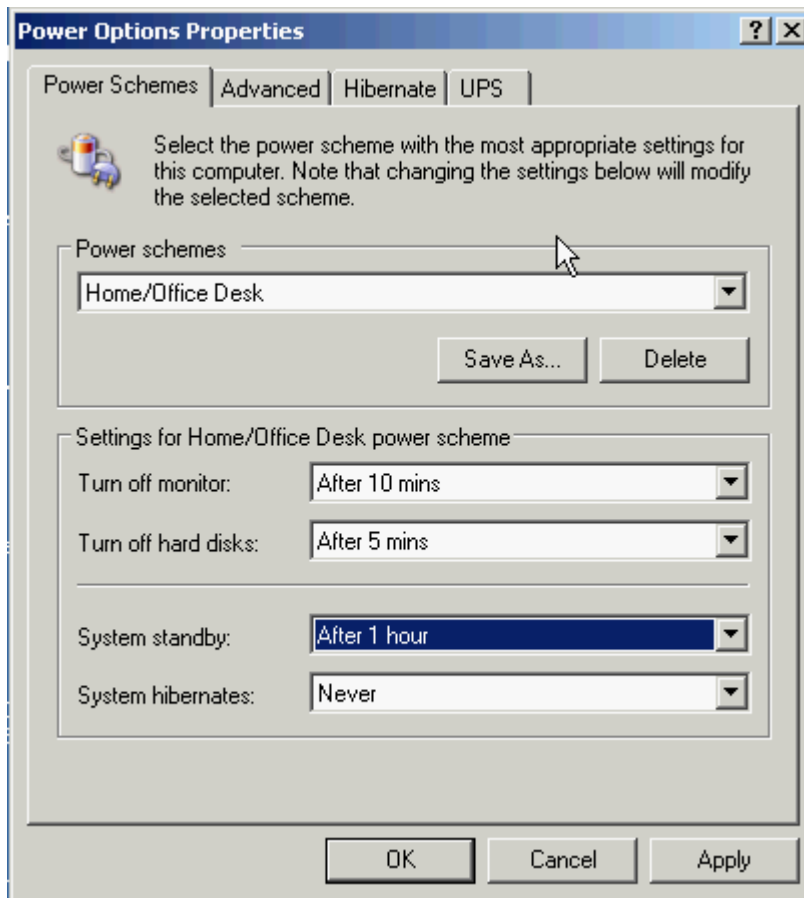
Below are the steps for configuring the energy savings mode on your computer with Windows XP.

1. Go to **Control Panel>Power Options**. Locate and click on the **Power Options** icon.



*Result:* The **Power Options Properties** screen with default settings appears.

2. To configure power options for your desktop, select the **Home/Office Desk** power scheme. If you choose Portable/Laptop, skip this step and go to [Step 4](#). IS&T recommends the following settings for Home/Office Desk:
  - Turn off monitor: **After 10 minutes**
  - Turn off hard disks: **After 5 minutes**
  - System standby: **After 1 hour**
  - System hibernates: **Never**



3. To configure power options for your laptop, choose the **Portable/Laptop** power scheme.

*Result:* The **Power Options Properties** screen with default settings appears.

4. If your laptop is *plugged in*, use the following settings:
  - Turn off monitor: **After 10 minutes**
  - Turn off hard disks: **After 20 minutes**
  - System standby: **After 1 hour**
  - System hibernates: **Never**
5. If your laptop is using a *battery*, use the following settings:
  - Turn off monitor: **After 3 minutes**
  - Turn off hard disks: **After 5 minutes**
  - System standby: **After 1 hour**
  - System hibernate: **2 hours**

The following screen reflects the IS&T settings for Portable/Laptop with Plugged in and Running on batteries settings:



6. Click **OK**.