

HST 583:
Functional Magnetic Resonance Imaging:
Data Acquisition and Analysis
Fall 2001

Brain Structure: I

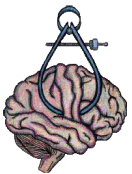
David N. Kennedy

Center for Morphometric Analysis

Departments of Neurology and Radiology, MGH, HMS

HST/MGH/MIT

Mathinoula A. Martinos Center for Biomedical Imaging



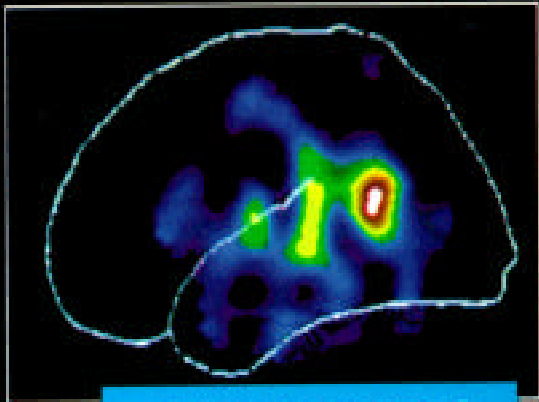


SUPERIMPOSED BRAIN IMAGE BY BASSEM MORA AND GEORGE CARMAN

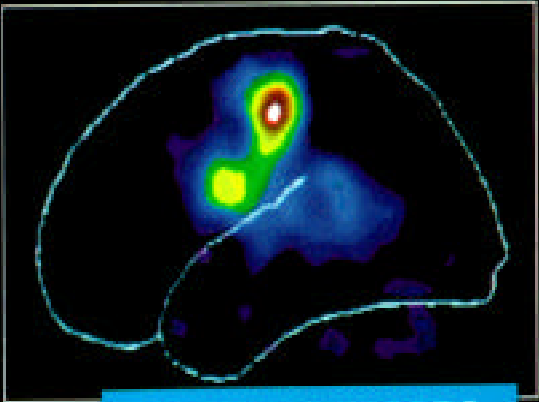
Outline

- Characterization of Structural MR Data
 - Anatomic Analysis
- Structural-to-Functional Registration
 - Talairach Coordinate System
- Individual Variability
- Spatial Information

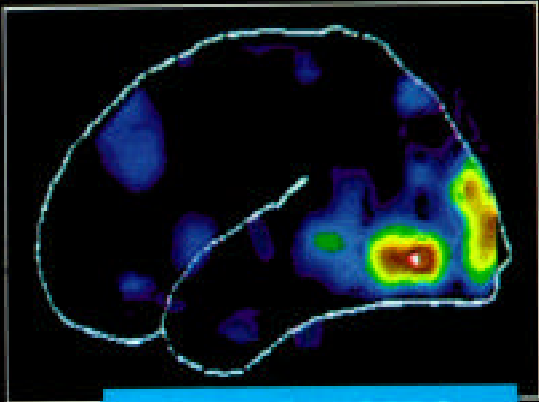
- Diffusion Tensor Imaging for White Matter



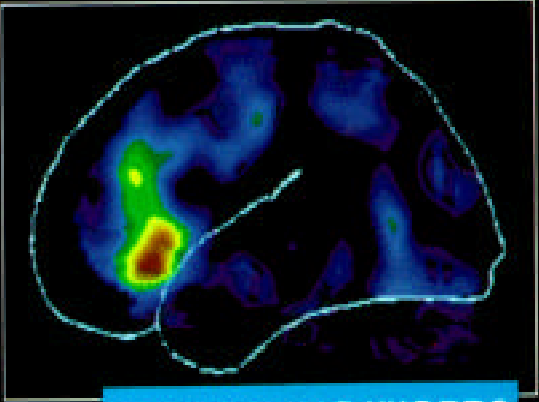
HEARING WORDS



SPEAKING WORDS



SEEING WORDS



GENERATING WORDS

Why Study Anatomy?

- **Intrasubject Analysis**

“What brain areas are active in this subject using this paradigm?”

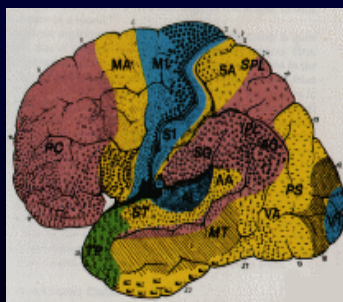
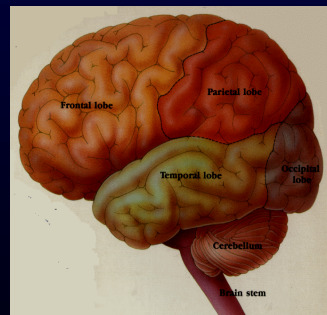
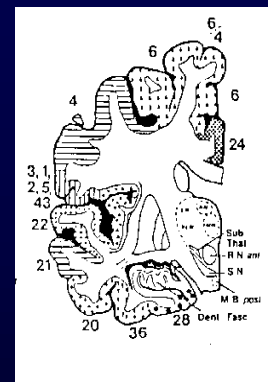
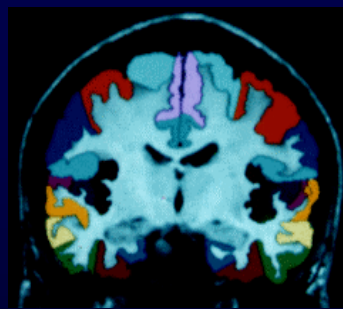
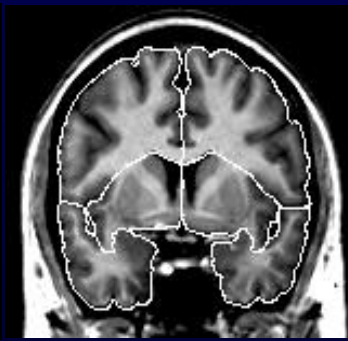
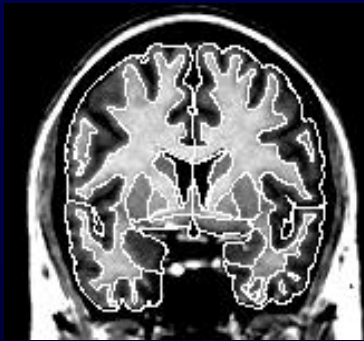
“How do those areas changed when the paradigm is changed?”

- **Intersubject Analysis**

“Are the similar brain areas activated in all subjects using this paradigm?”

“How does the average activation pattern change when the paradigm is changed?”

Neuroanatomic Description Hierarchy:



**WHOLE
BRAIN/STRUCTURE**

LOBES

SYSTEMS

**CYTO- & MYELO-
ARCHITECTURE**

Neuroanatomical Description Hierarchy

- Whole Brain
- Whole Cortex
- Lobes
- Whole Substructures (ie. Basal Ganglia, etc.)
- Systems Organization
- Cytoarchetectonic Areas

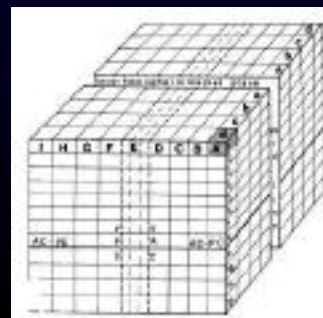
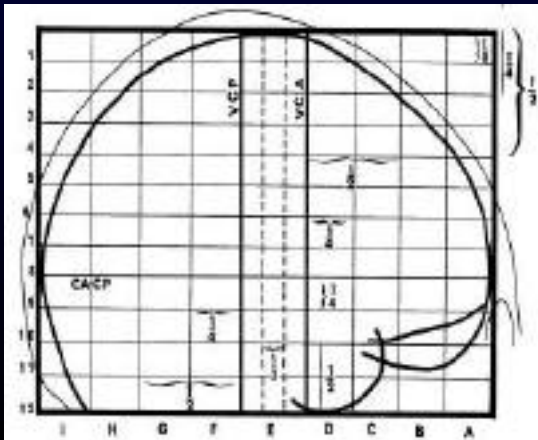
Methods for Anatomical Localization

- Metric (*hetero-referencial*)
i.e. Talairach Proportional Scaling System
35mm Posterior, 15 mm Superior, 47 mm Right
- Taxonomic (auto-referencial)
i.e. Cortical Parcellation
Posterior 1/3 of Superior Temporal Gyrus

Spatial Normalization Common Coordinate System

Talairach Proportional Scaling System

- Orientation: Normalized relative to AC-PC line and inter-hemisphere fissure
- Regional Scale Factors: frontal pole, occipital pole, superior parietal margin, inferior temporal margin, right & left lateral margin



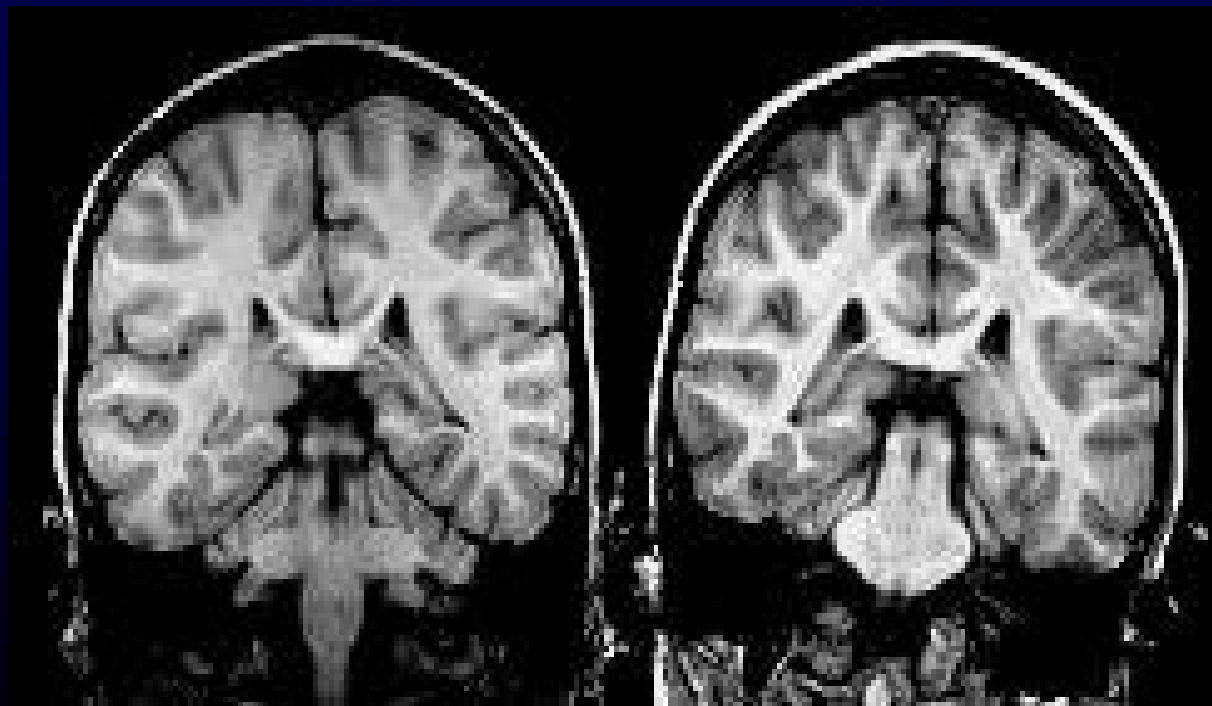
Positional Normalization

Example

1

2

Native



Positional Normalization

Example

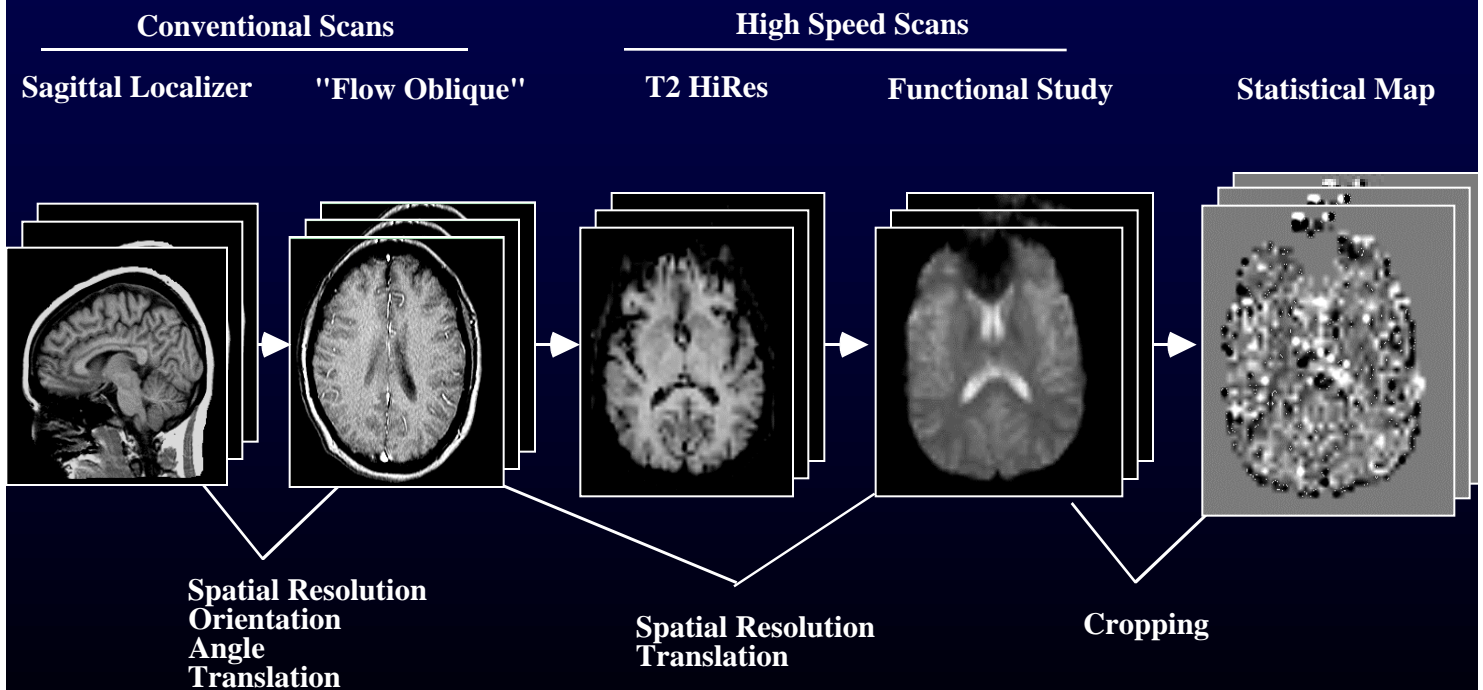
1

2

Normalized



Spatial Transformations



Spatial Transformations

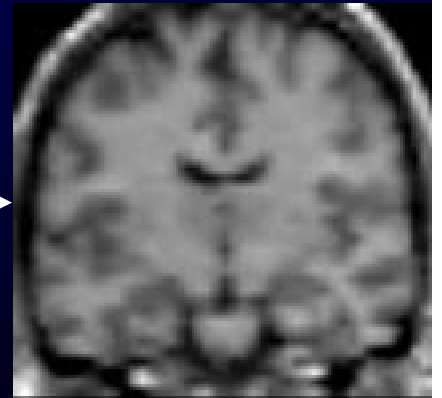
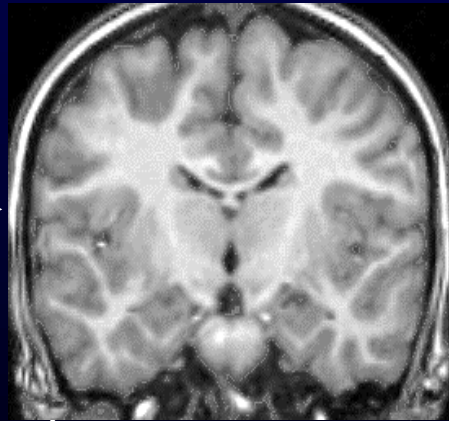
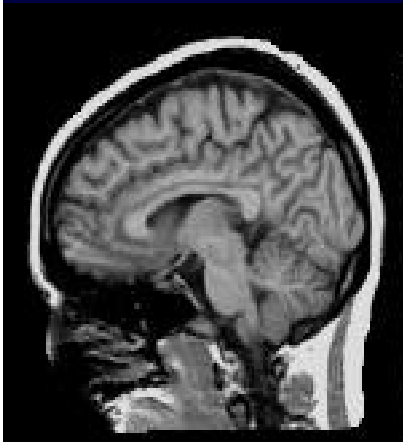
Original Scans

Reformatted Scans

Sagittal Localizer

"Normalized Orientation"

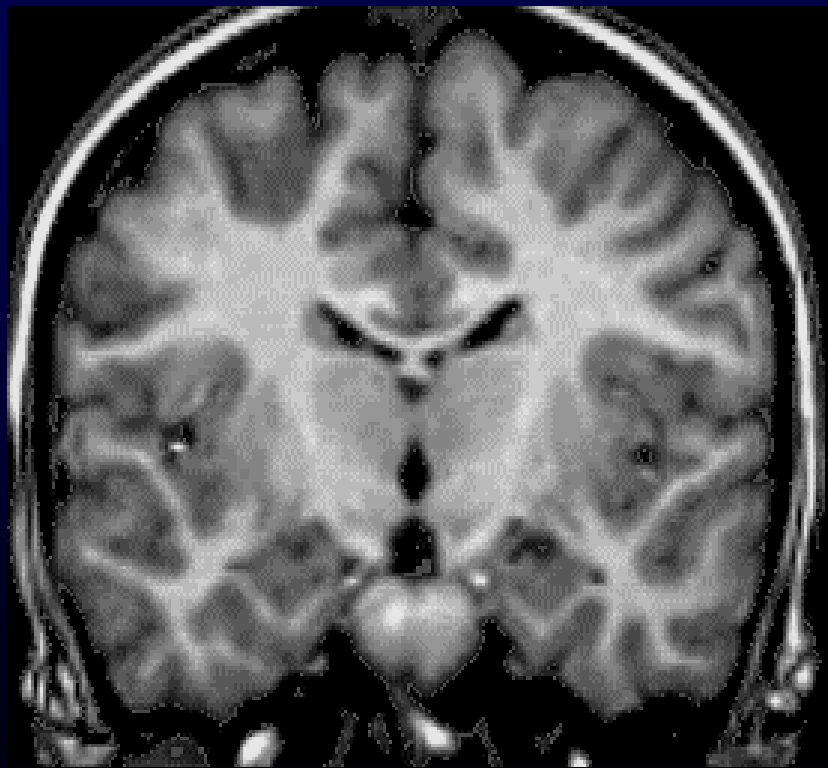
Talairach Proportions



Orientation
Angle
Translation

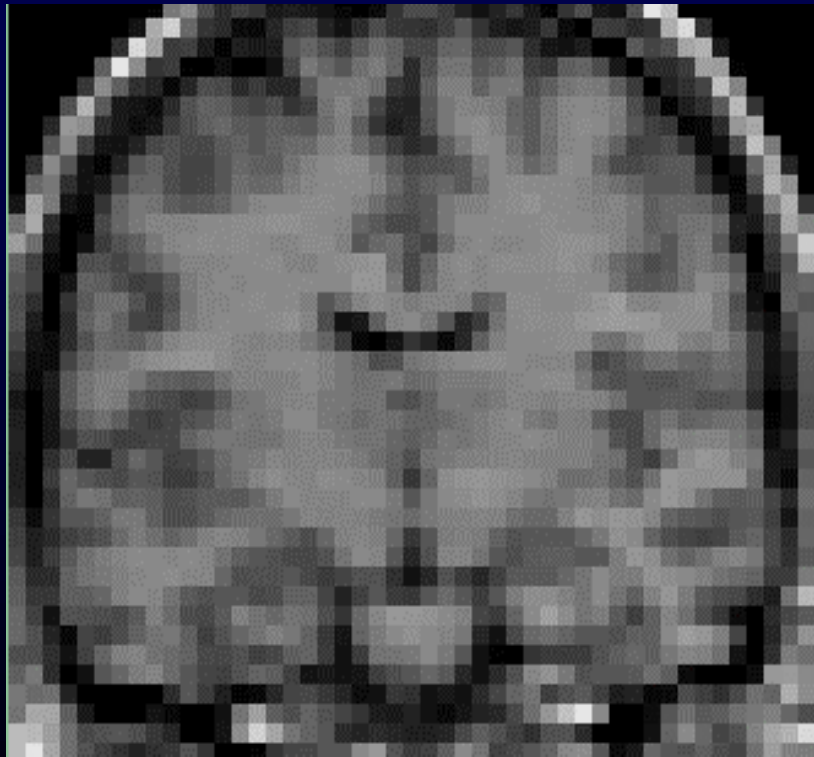
Spatial Resolution
Translation

Resolution



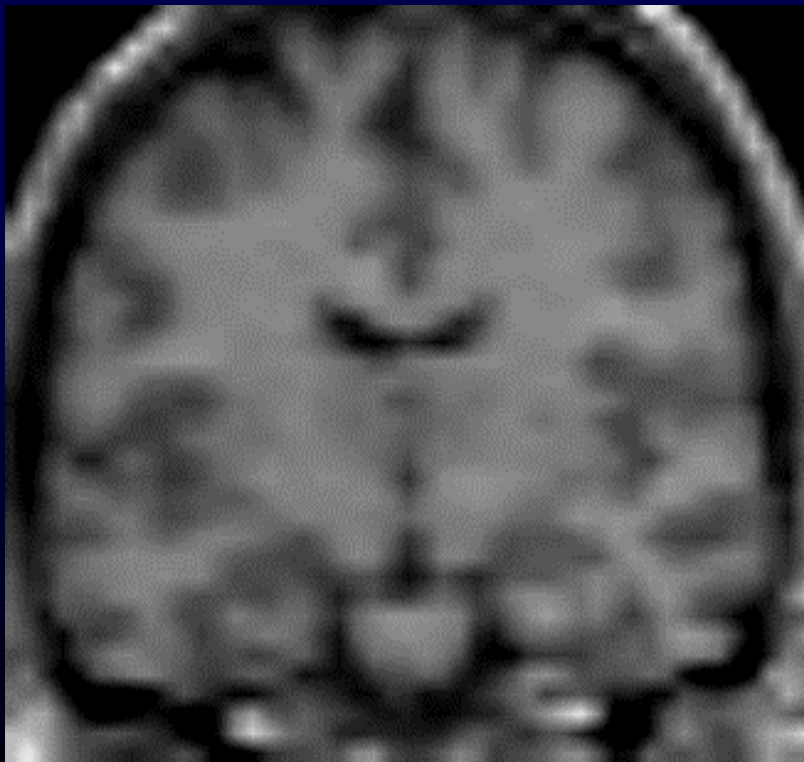
“High” Resolution
(0.9375 mm / Pixel)

Resolution



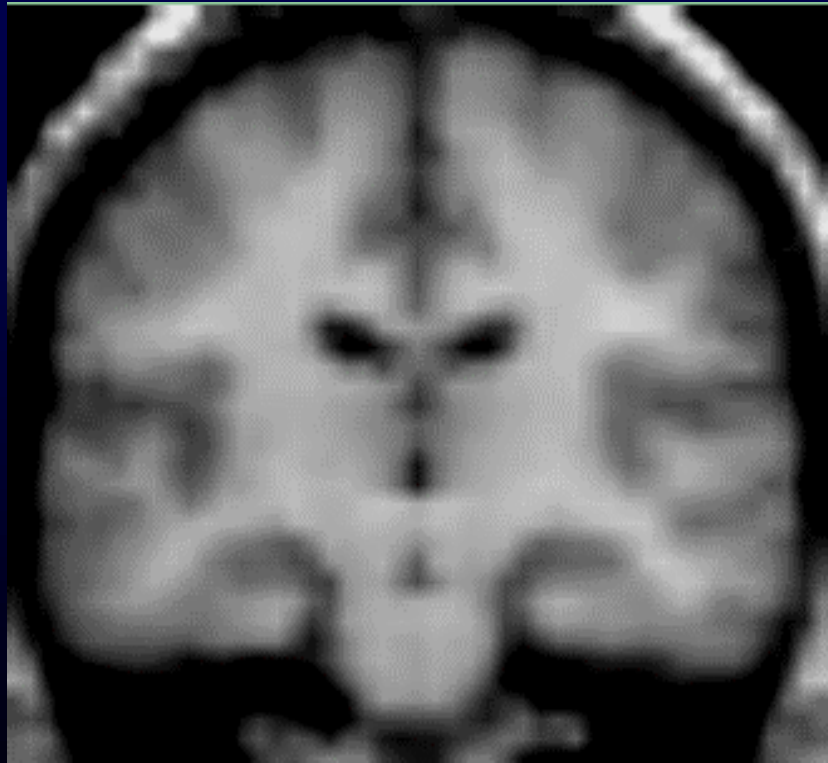
“Functional” Resolution
(3.125 mm / Pixel)

Effect of Averaging



One Individual
(3.125 mm / Pixel)

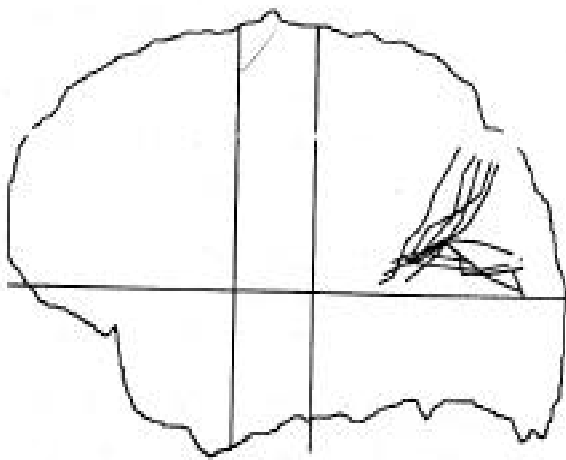
Effect of Averaging



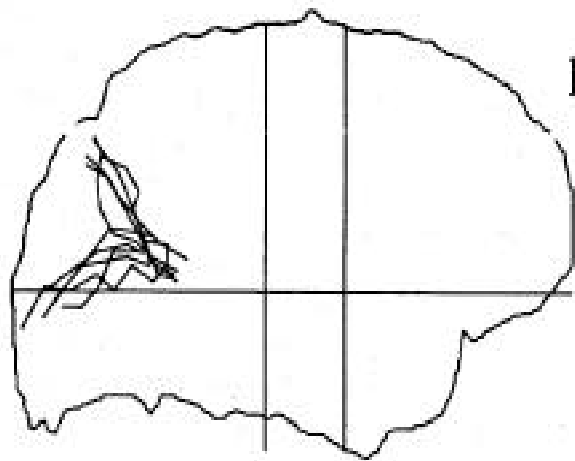
Group Average (N=12)
(?? mm / Pixel)

Sulcal Variability (from Belliveau, *et al.*, 1991)

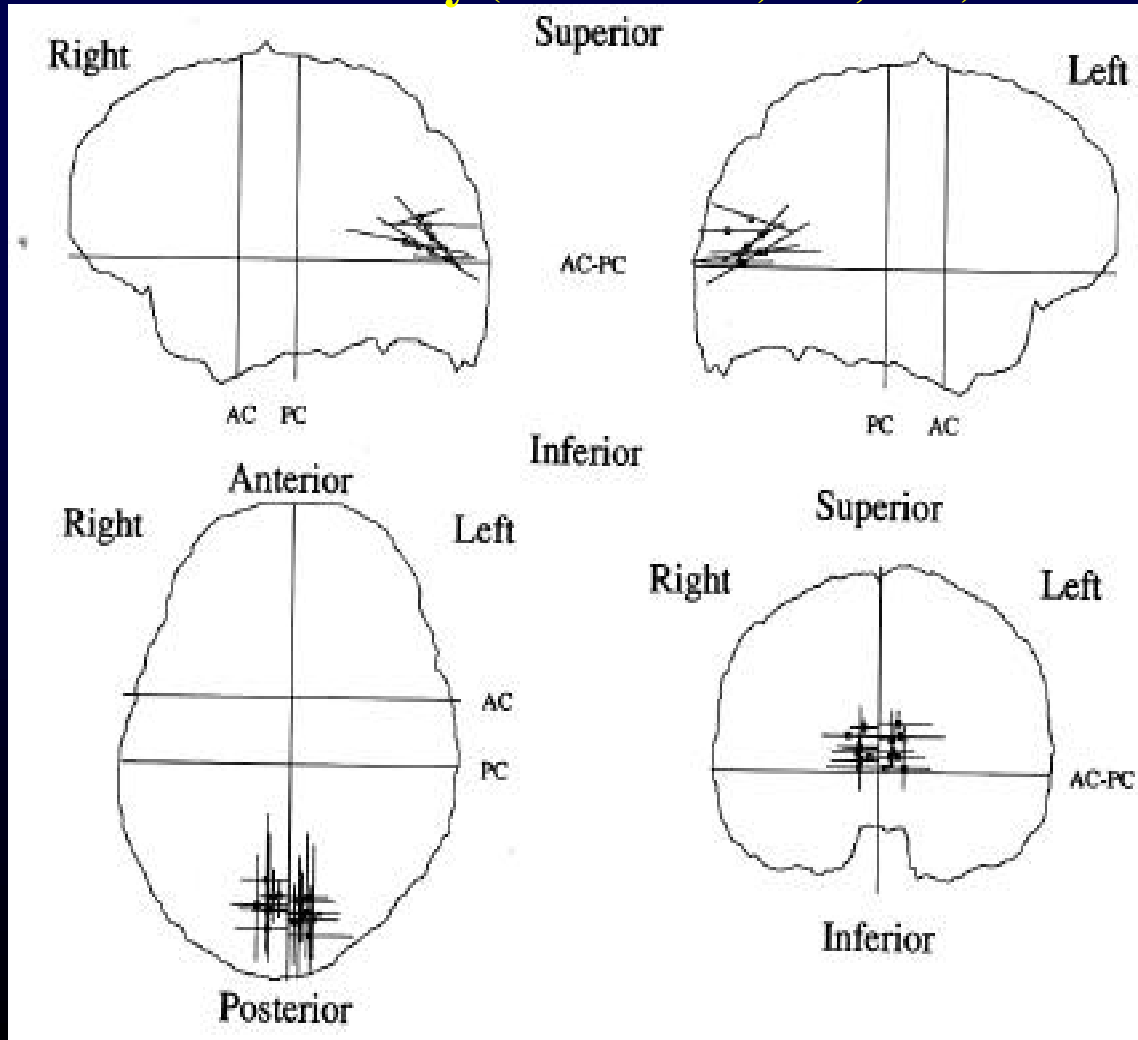
right



left



Functional Variability (from Belliveau, *et al.*, 1991)



Sulcal Variability (from Talairach Atlas)

