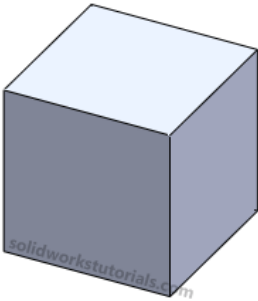
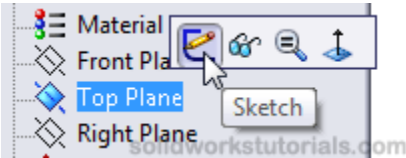



How to Create a Simple Box

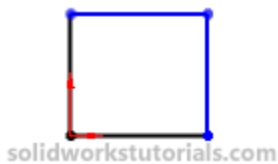



1. Click **New** , Click **Part**  and **OK**.

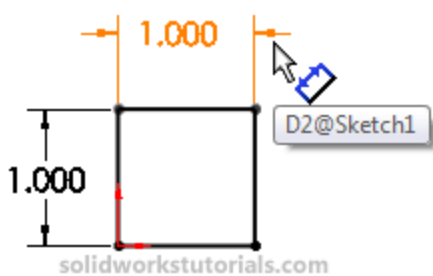
2. Click on **Top Plane** and click **Sketch**.



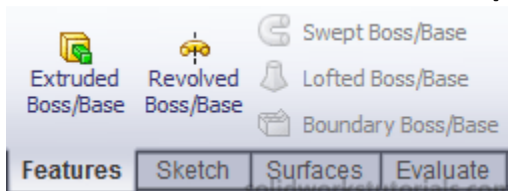
3. Click **Rectangle** , sketch a rectangle start from origin.



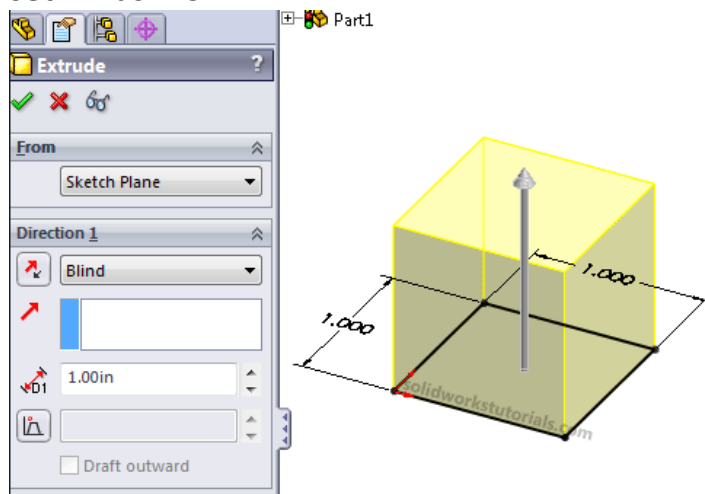
4. Click **Smart Dimension** , click side edge and click top edge to dimension it as **1.0in x 1.0in**.



5. Click **Features>Extruded Boss/Base**

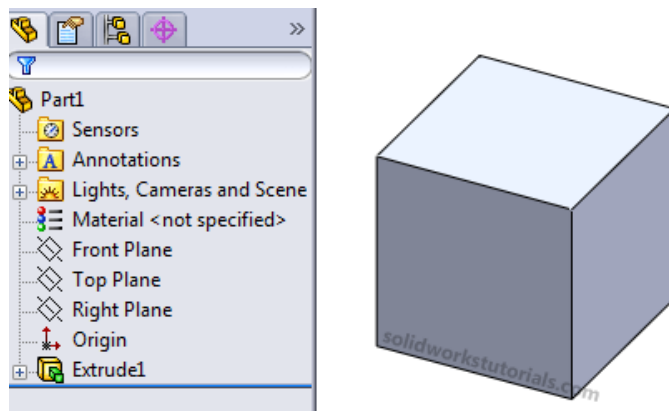


set D1 as 1.0in

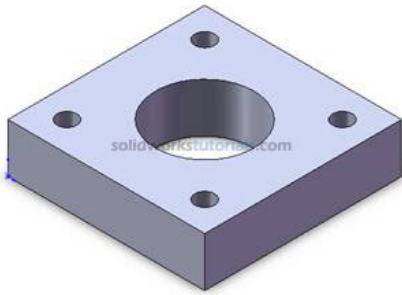


and click .


6. It's done. Simple Right?



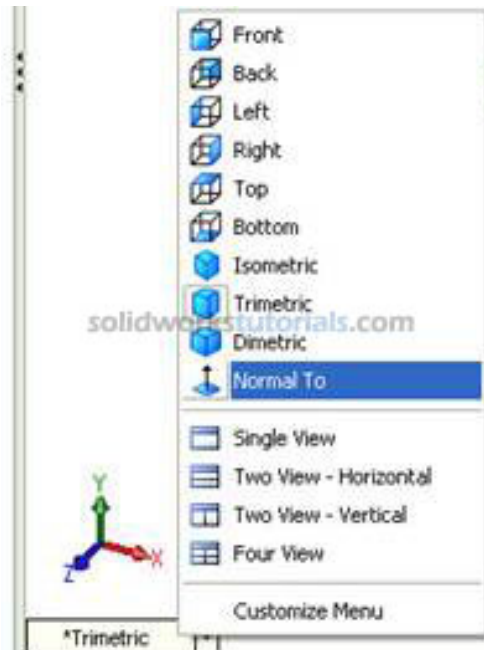
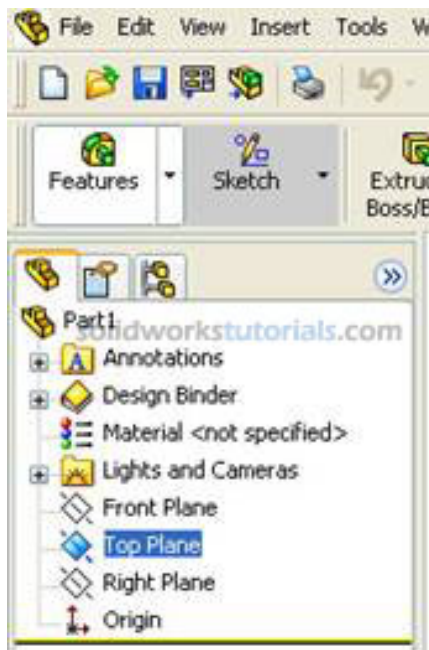
How to Create a Simple Plate



1. Click New  (File>New) , click Part  , OK.

2. Click Option  (Tools>Option...) , select Document Properties tab. Select Units , under Unit System select IPS (inch, pound, second) OK.

3. Select Top Plane , from lower left menu select Normal To.





4. Click Sketch in Command Manager, click Rectangle. As you can see on upper right corner sketch icon appear indicate that you're on



sketch mode



5. Pick Origin point as starting point, drag to right hand side



no need to be exact the size will define in later step. Press keyboard ESC to end rectangle sketch.



Note: There is two type line generated by your sketching, the one with black line and blue line. Black line is line that fully defined and blue line is under defined.

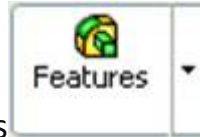


6. Define sketch with dimension. Click Smart Dimension, and start dimensioning pick vertical line and set to 2.00in, pick horizontal line and set to



2.00 in. Press keyboard ESC to end smart dimension

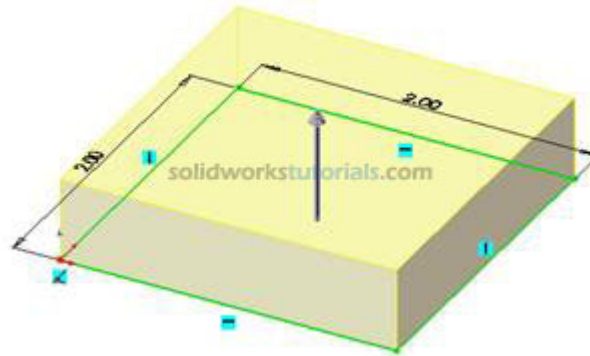
7. Build feature from sketch, click Features



menu. Click Extruded Boss/Base and set D1 to 0.5in

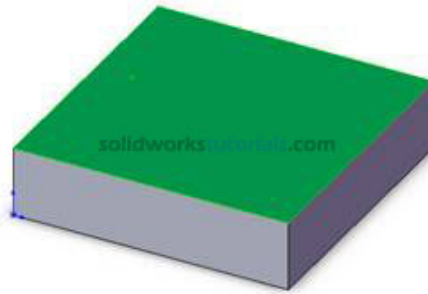


and 

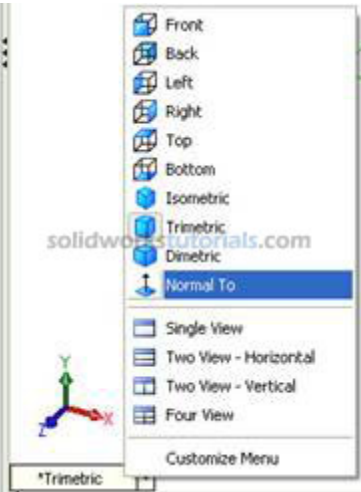


8. Click front top face

, click Normal



To . Activate sketch menu by click Sketch





and select Circle



. Sketch 4 circle at four

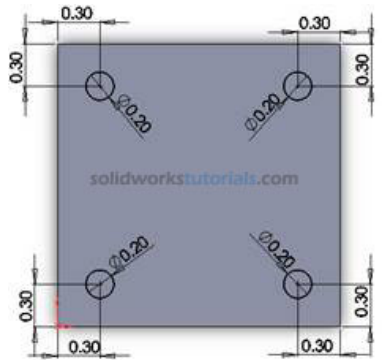


edges.

9. Define new circle sketch, click Smart Dimension



, set diameter circle

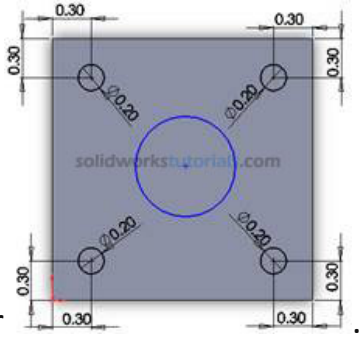



to 0.2in . Select distance for edge set to 0.3in

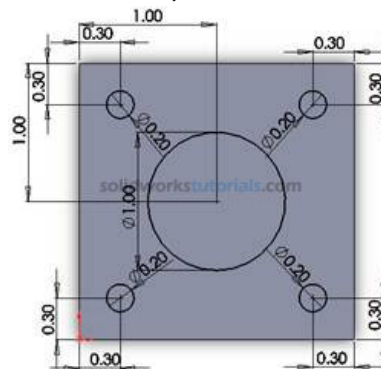
10. Click Circle



and sketch one circle at center

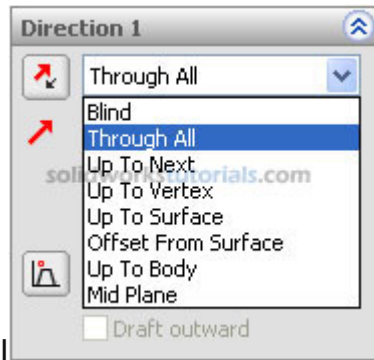


11. Define new circle sketch, click Smart Dimension  , set diameter

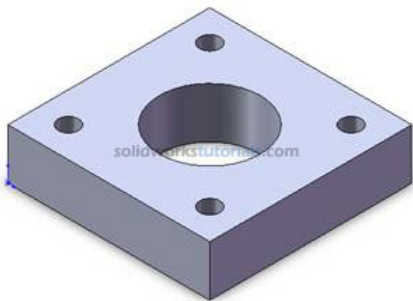


circle to 1.0in . Select distance for edge set to 1.0in.

12. For cut click Features  , click Extruded Cut  , under

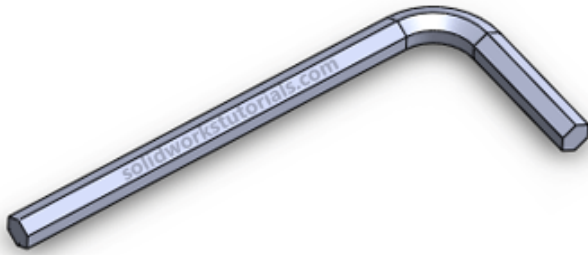


Direction 1, Through All and  .



Done.

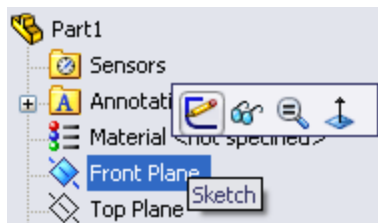
How to Create an Allen Key



In this solidworks tutorial, you will create simple allen key.


1. Click **New**.  Click **Part**,  **OK**.

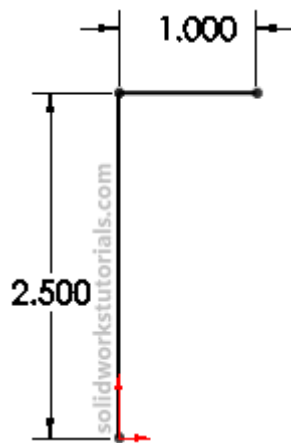
2. Click **Front Plane** and click on **Sketch**.



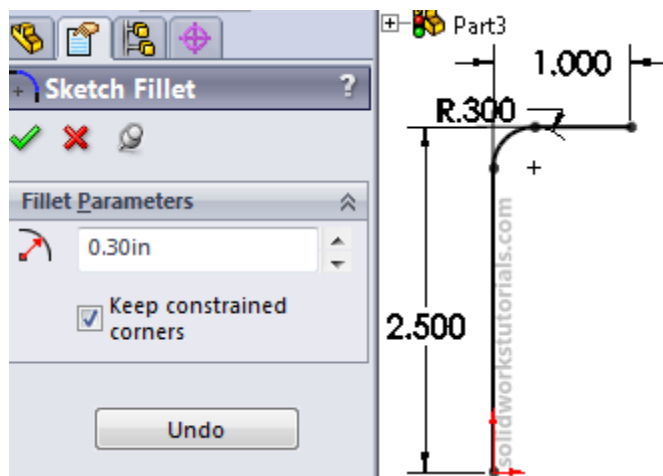
3. Click **Line**, sketch a L shape.



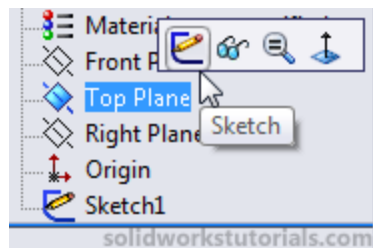
4. Click **Smart Dimension**,  and dimension sketch as **2.5"** and **1"**.



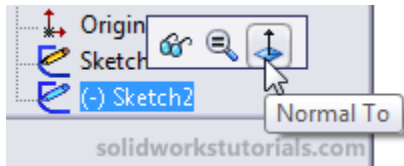
5. Click **Sketch Fillet**,  add **0.3"** fillet at L corner.



6. **Exit sketch**,  click on **Top Plane** and click **Sketch**.




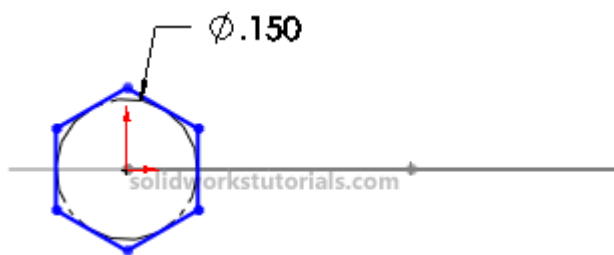
7. Click on **Sketch2** and click **Normal To**.



8. Click Polygon,  sketch a polygon at origin.



9. Click **Smart Dimension**,  and dimension sketch diameter to **0.15"**.



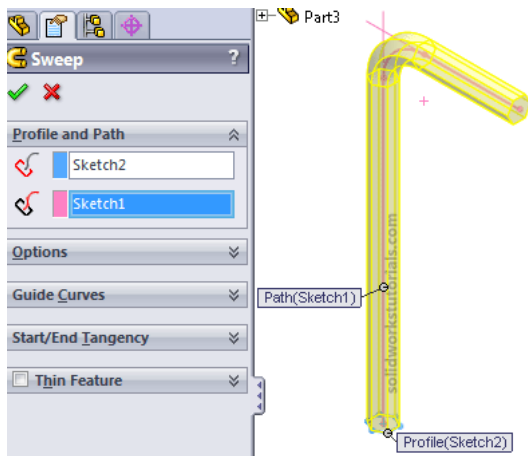
10. **Exit sketch**,  click on **Isometric** view.





11. Click **Features>Swept Boss/Base**,  Swept Boss/Base

for profile click on **Sketch2** and for path click on **Sketch1** and OK.



You're done!.

