

Storyboarding LP Expo

Lab Project Documentation

All electronics need to be returned by the end of class

BUT before you take your projects apart:

- Photograph it (multiple angles, neutral background)
- Get a video of your working prototype
- Upload your code to BiP (as a design file)

Assignment

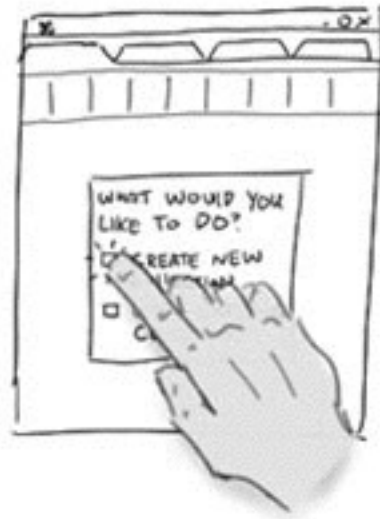
Complete your LP BiP documentation by **11:59 PM Sunday (1/18)**

Individual student reflections

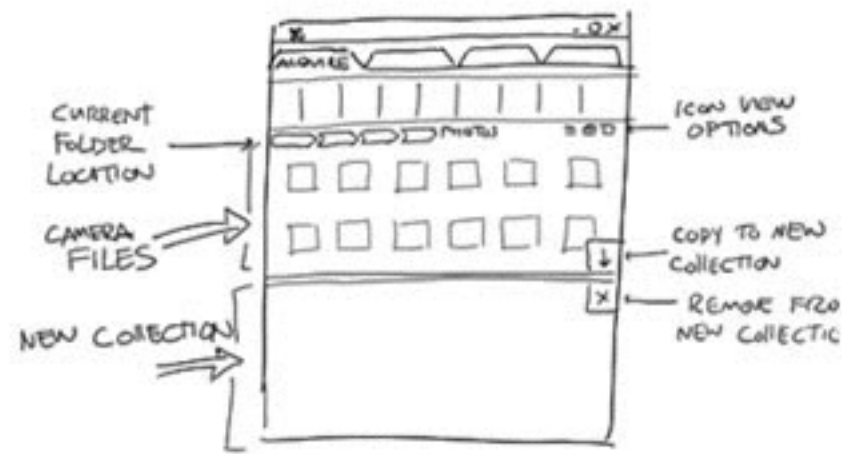
- What would you change if you could build V2 of your design?
- What skills did you contribute to the project?
- What skills would you like to develop for the FP?

Storyboarding

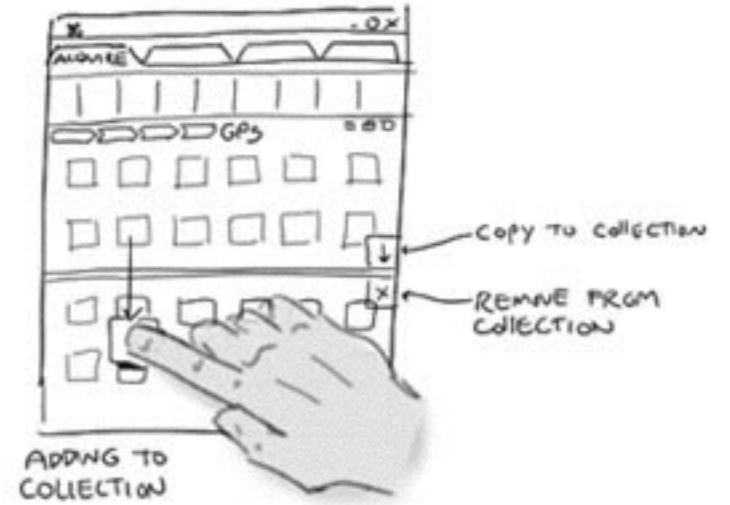
Series of images that walk through the
user experience



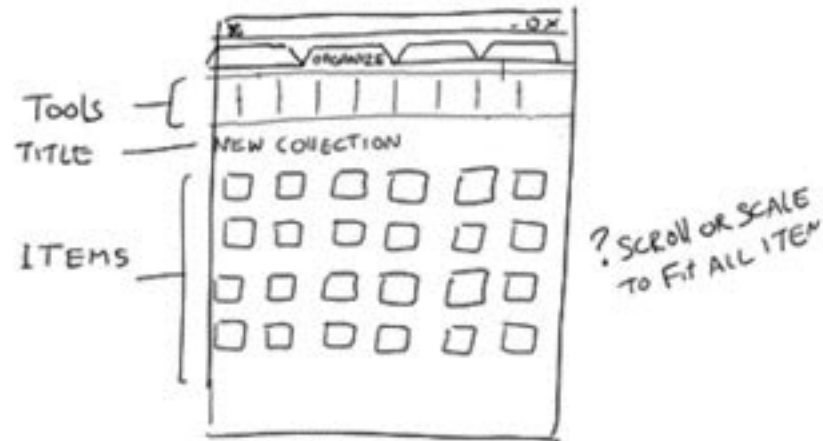
CREATE NEW
COLLECTION



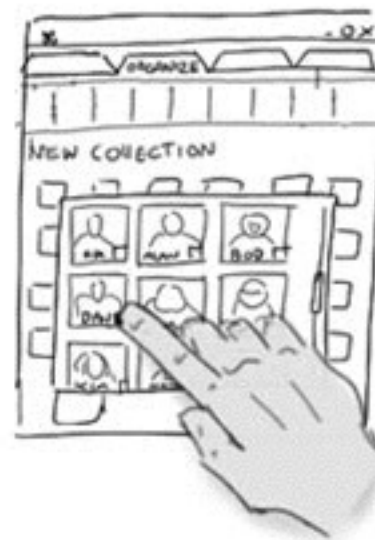
1 - DOWNLOAD FROM CAMERA
OR
- RETRIEVE PHOTOS FROM
DEFAULT CAMERA LOCATION



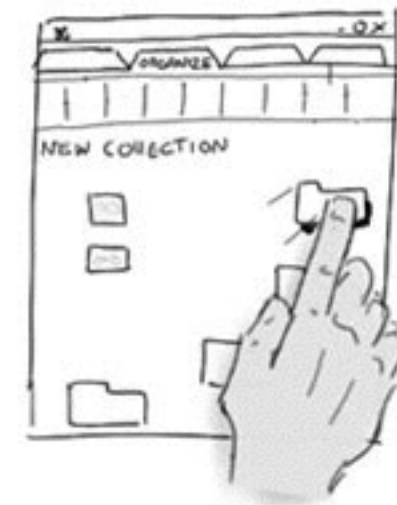
SELECT DATA FILES



"ORGANIZE" HOME
SCREEN



SELECT FACE TO
SORT BY



EDIT LAYOUT OF
COLLECTION

Get Out Ingredients



Activate Stand



Set and...



Finish Baking...



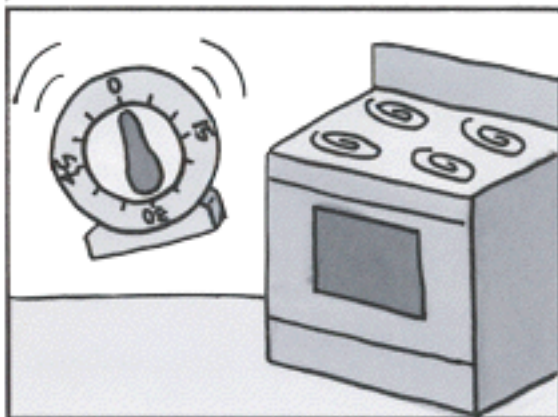
...Release



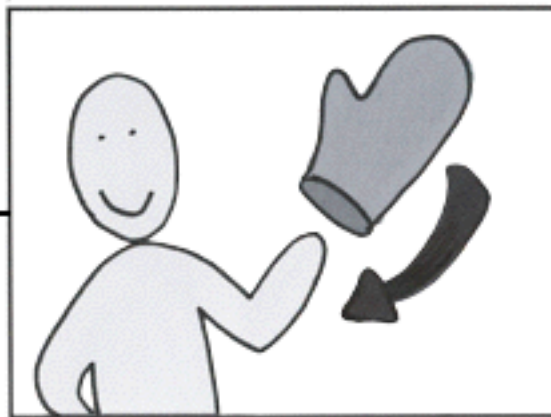
Clean Up



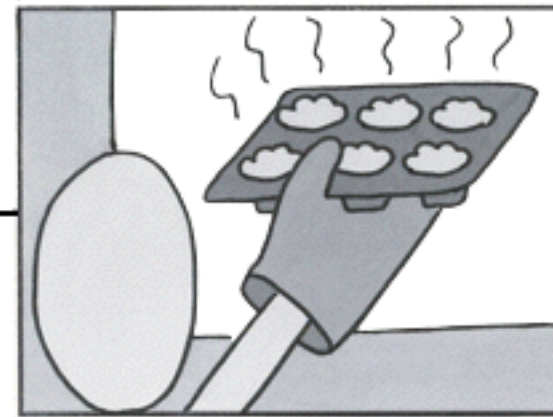
timer sounds



don't burn yourself



mmm hot muffins



whoa! technicolor!



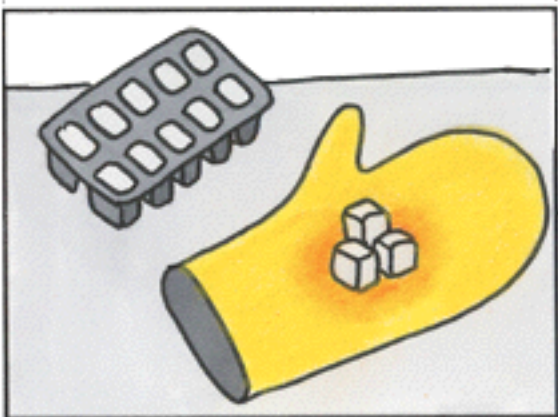
why did it change color?



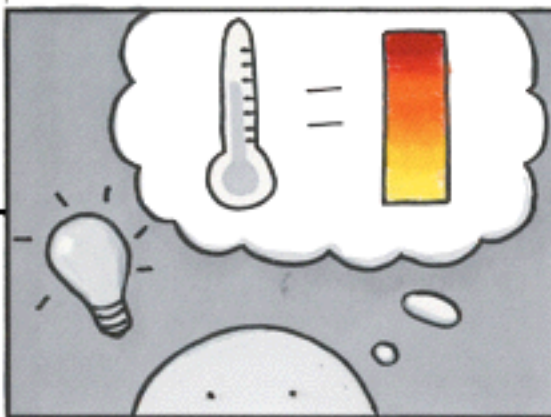
heat intensifies color



ice fades color

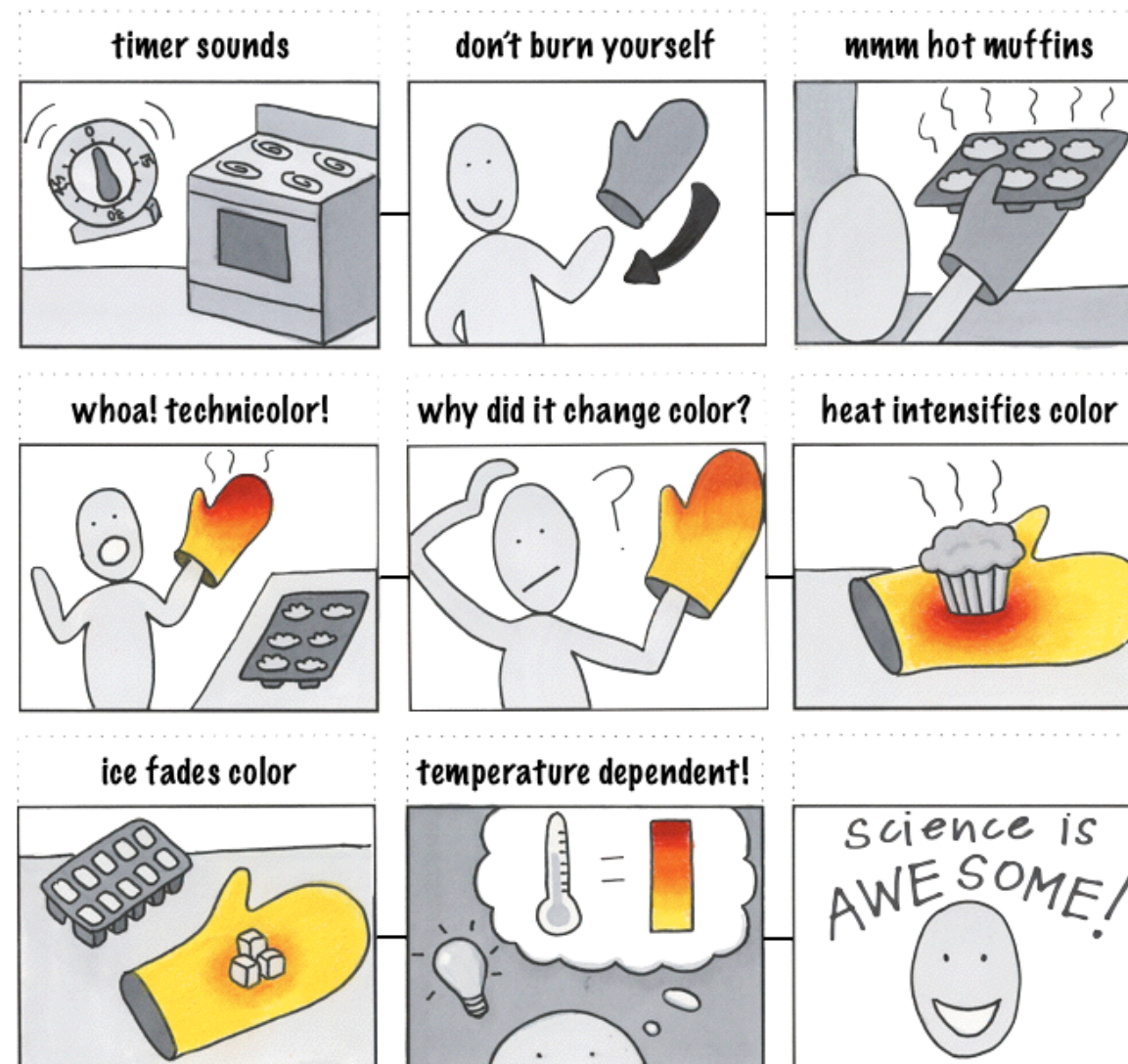
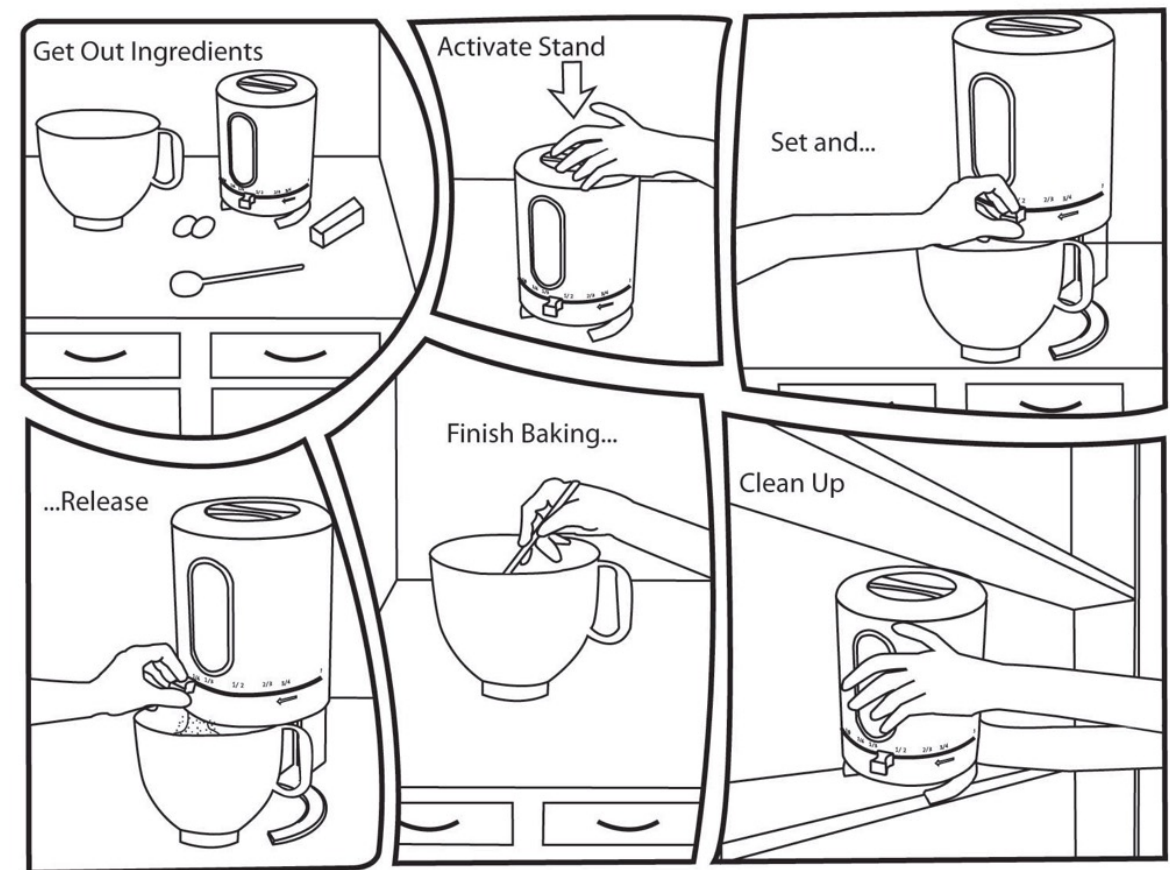
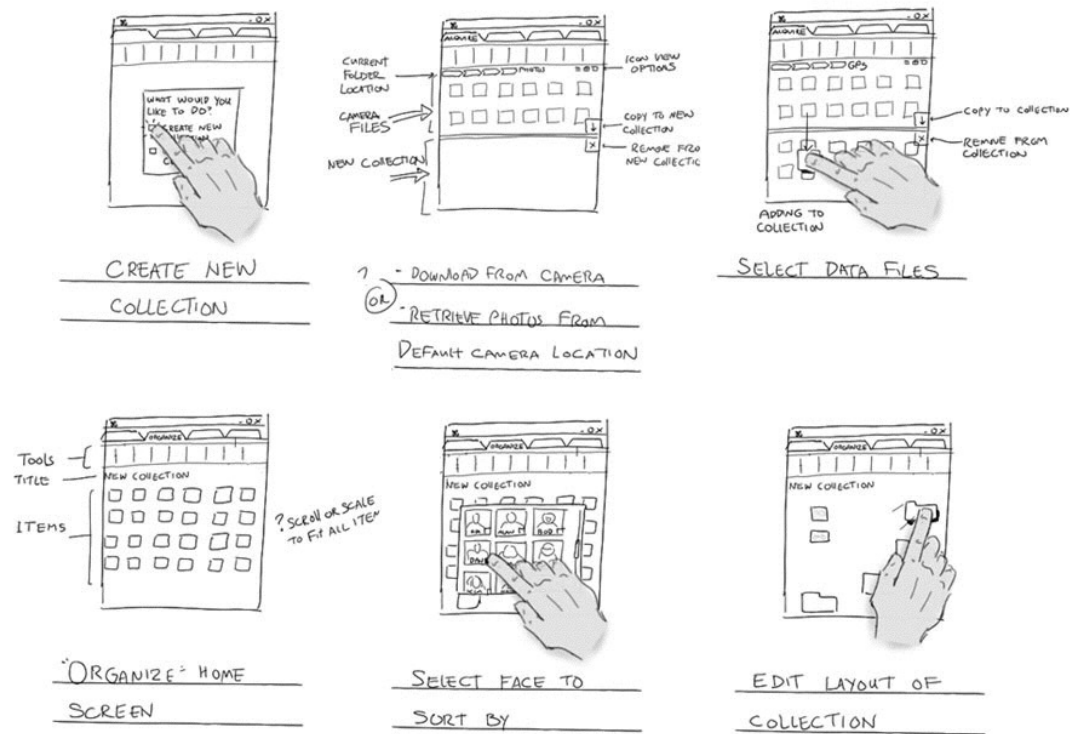


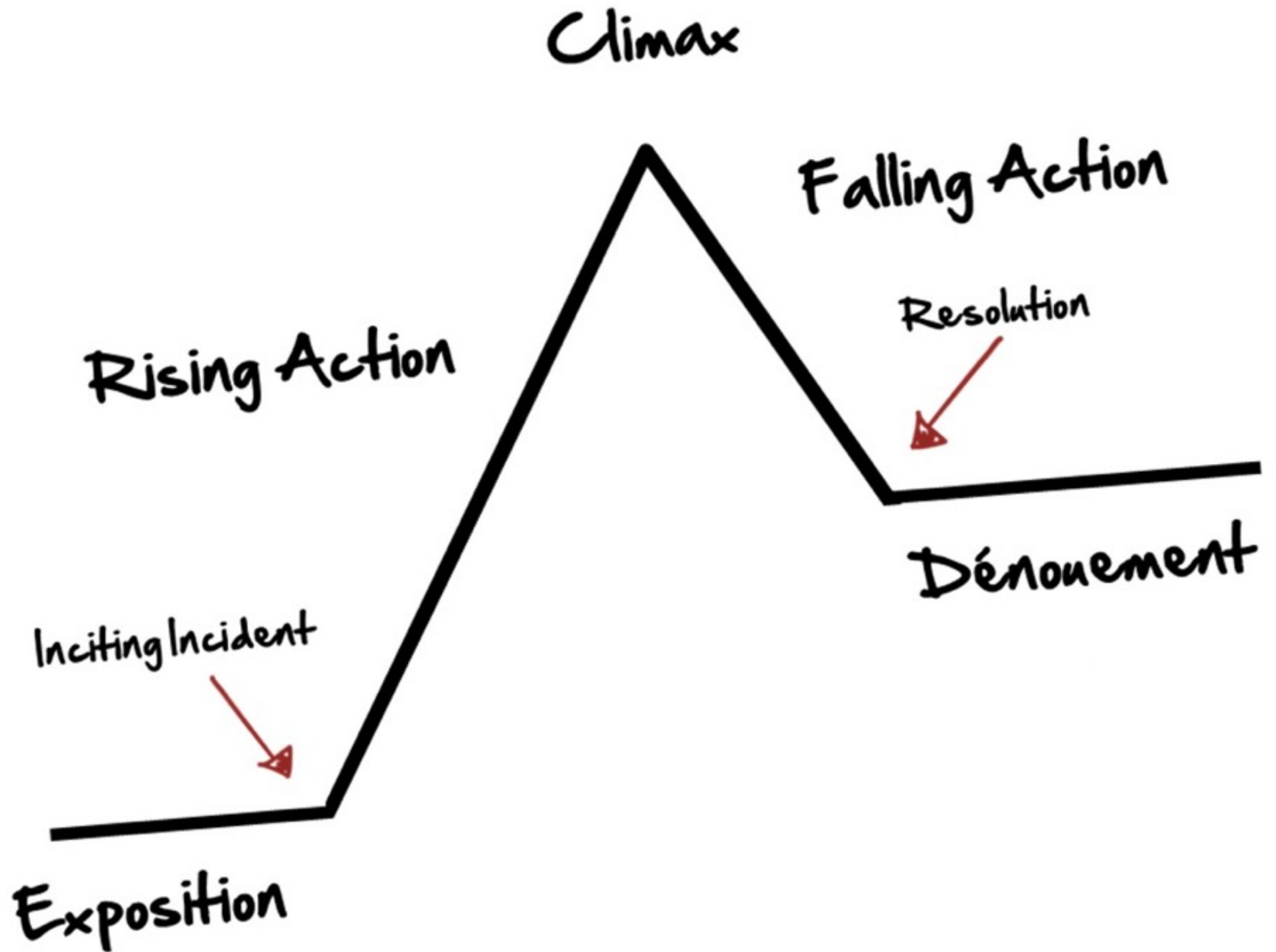
temperature dependent!

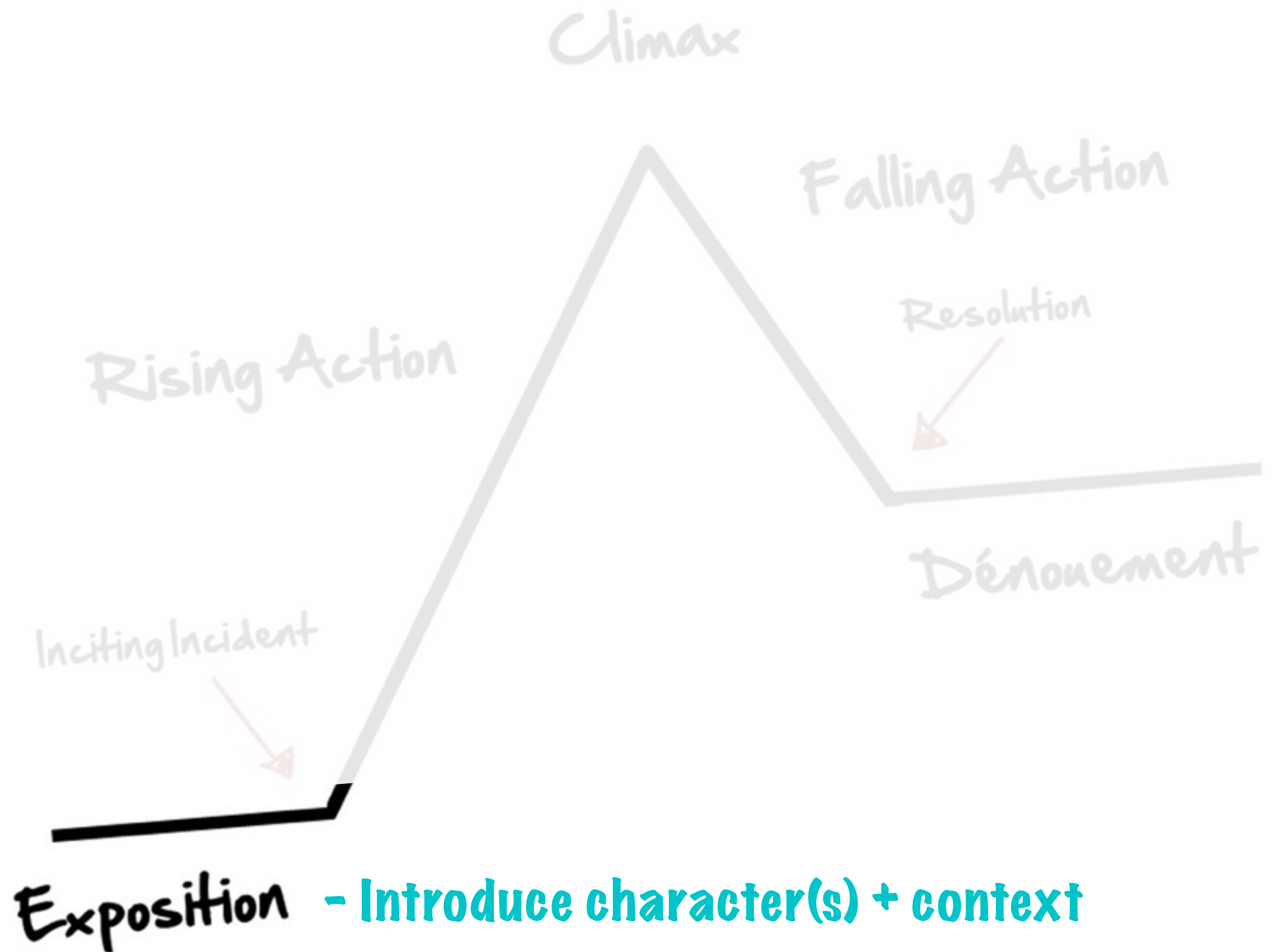


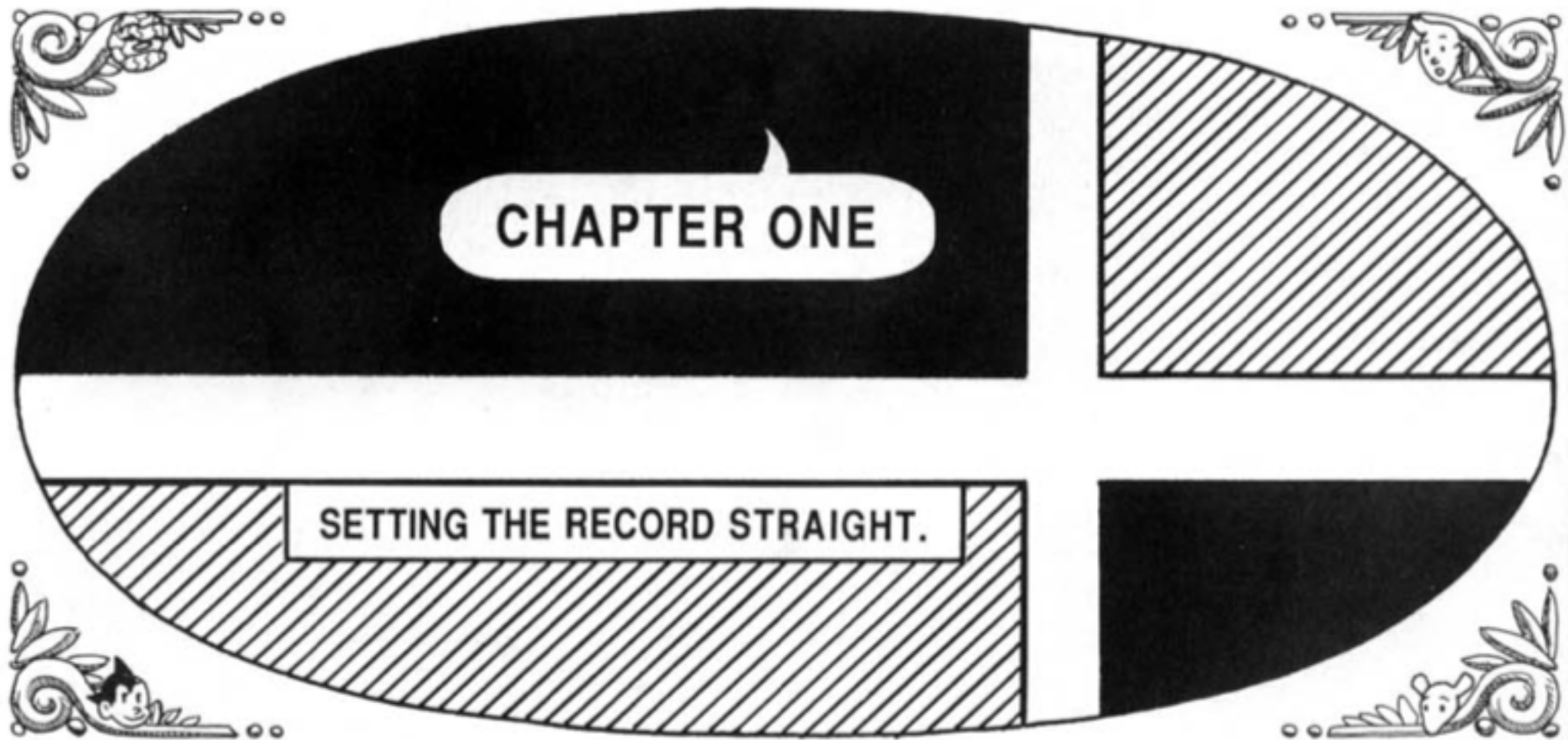
science is
AWESOME!





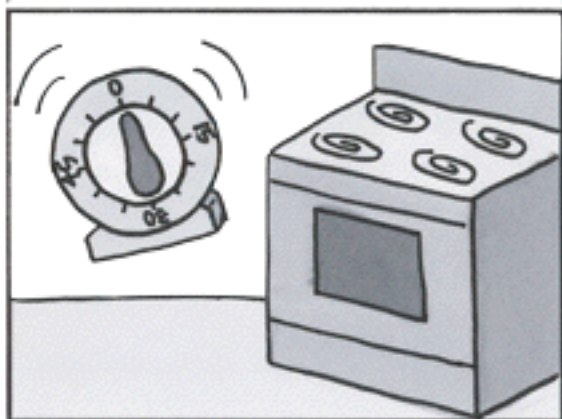




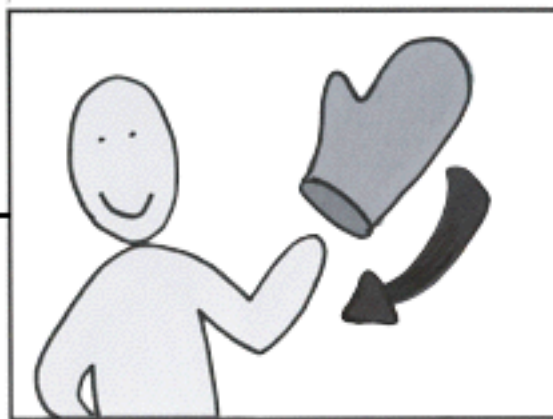




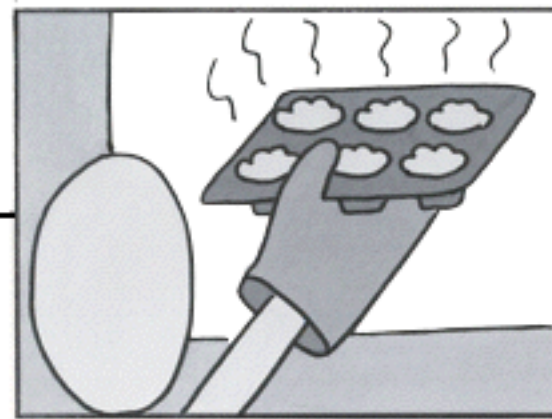
timer sounds



don't burn yourself



mmm hot muffins



whoa! technicolor!



why did it change color?



heat intensifies color



ice fades color



temperature dependent!



science is
AWESOME!





inciting incident

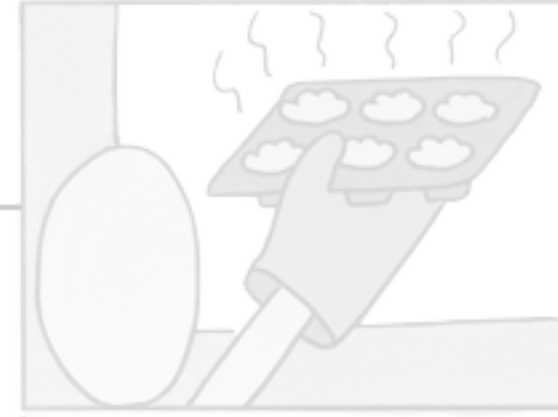
timer sounds



don't burn yourself



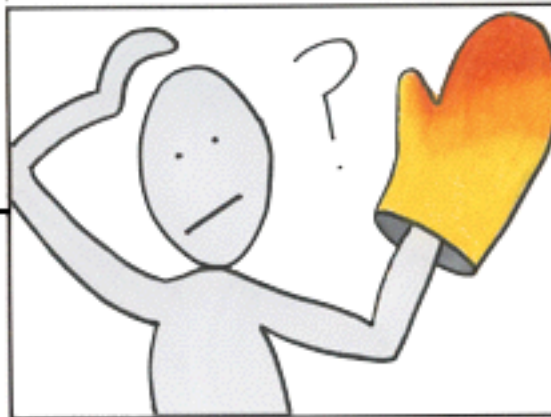
mmm hot muffins



whoa! technicolor!



why did it change color?



heat intensifies color



ice fades color



temperature dependent!



science is
AWESOME!



Climax -turning point



timer sounds



don't burn yourself



mmm hot muffins



whoa! technicolor!



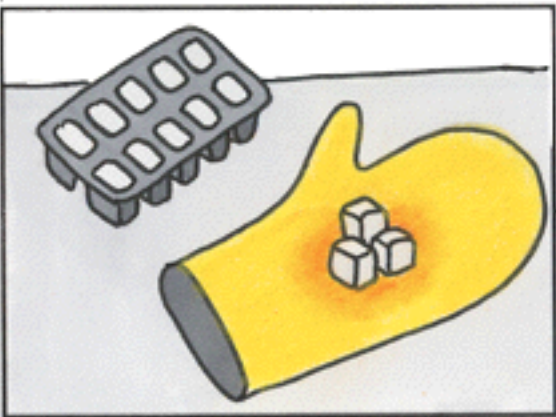
why did it change color?



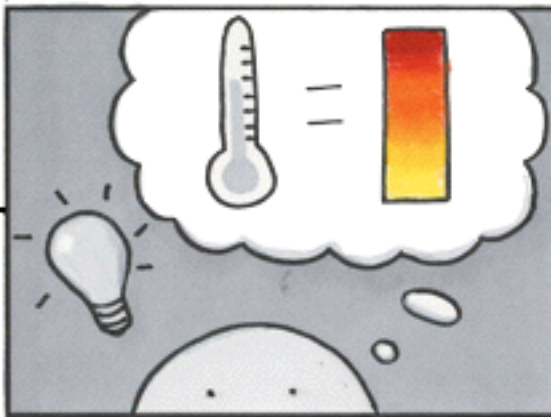
heat intensifies color



ice fades color



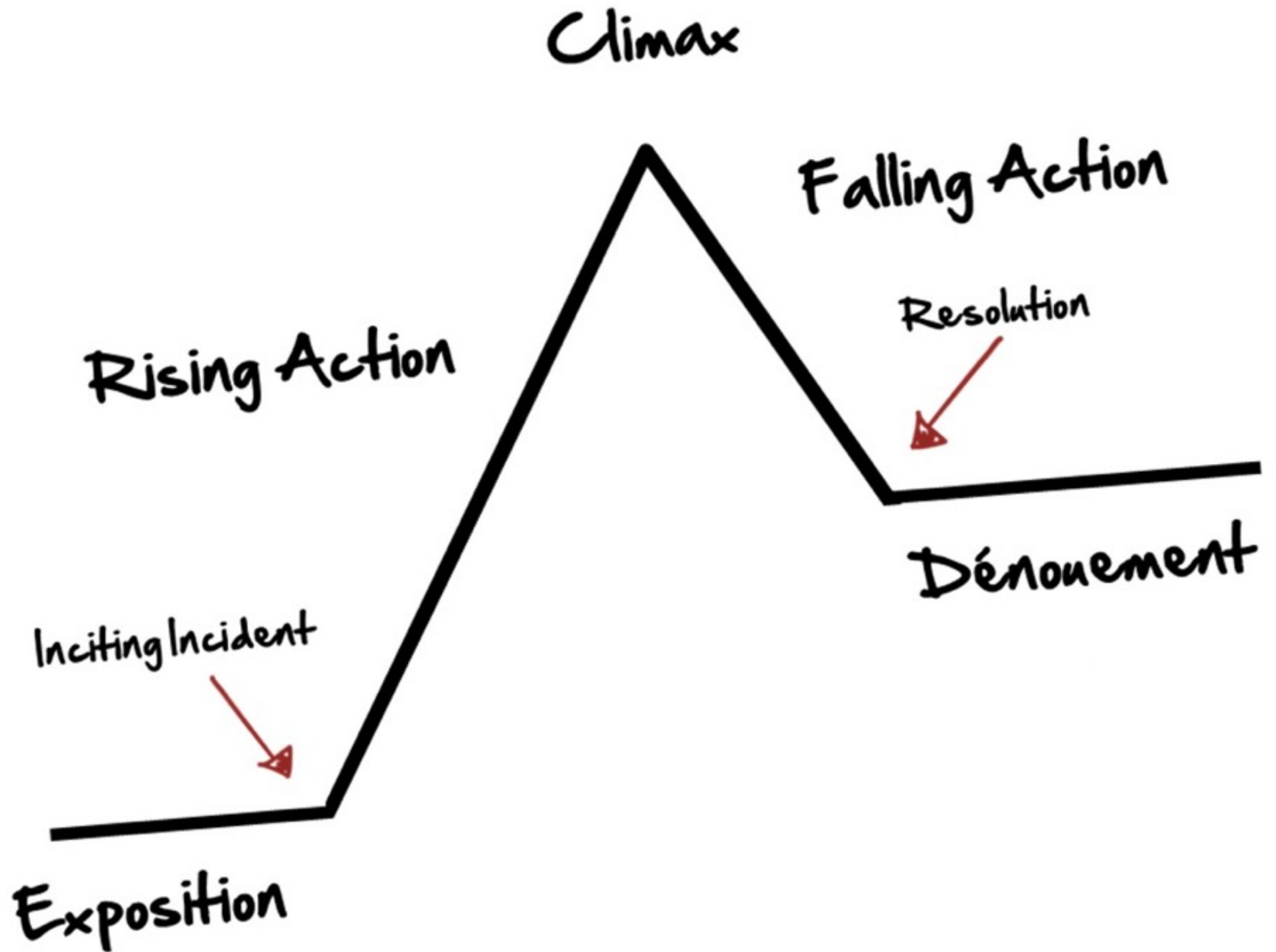
temperature dependent!



science is
AWESOME!



climax



timer sounds



don't burn yourself



mmm hot muffins



whoa! technicolor!



why did it change color?



heat intensifies color



ice fades color



temperature dependent!

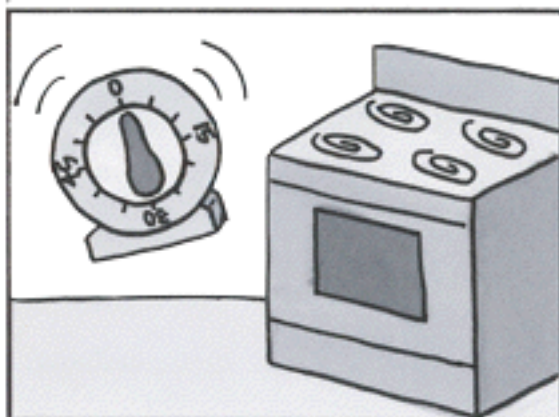


science is
AWESOME!

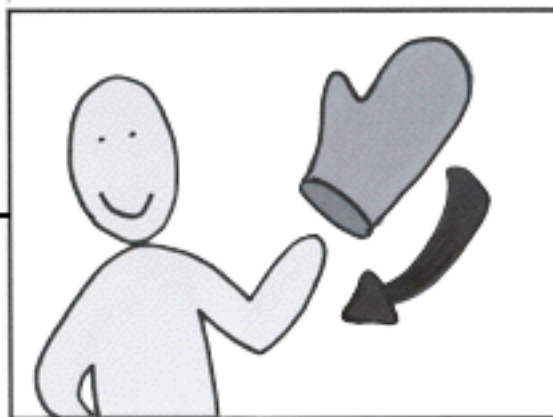


resolution

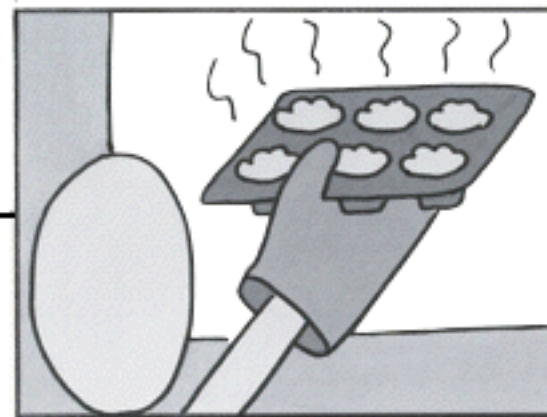
timer sounds



don't burn yourself



mmm hot muffins



whoa! technicolor!



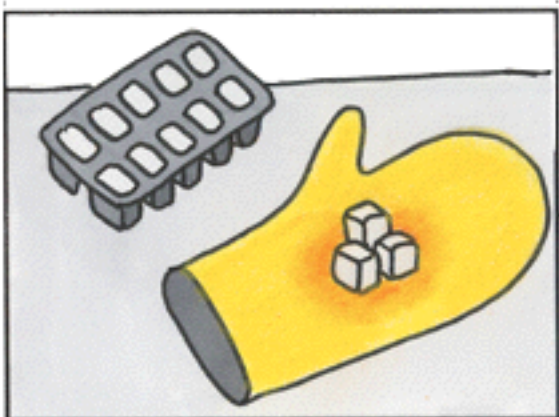
why did it change color?



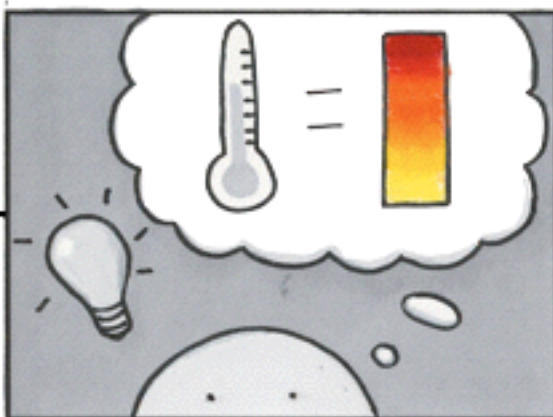
heat intensifies color



ice fades color



temperature dependent!





WHEN WE
ABSTRACT AN IMAGE
THROUGH **CARTOONING**,
WE'RE NOT SO MUCH
ELIMINATING DETAILS
AS WE ARE **FOCUSING**
ON **SPECIFIC**
DETAILS.

BY **STRIPPING**
DOWN AN IMAGE
TO ITS ESSENTIAL
"MEANING," AN ARTIST
CAN **AMPLIFY** THAT
MEANING IN A WAY
THAT REALISTIC
ART **CAN'T**.



① Draw MOUTH



② Add BROWS





Faces in Things

@FacesPics



Following

Do you see a sleepy koala?



RETWEETS

369

FAVORITES

861



2:03 PM - 9 Jan 2015



Faces in Things

@FacesPics



Following

This car is feeling the music



RETWEETS

730

FAVORITES

1,249



7:22 PM - 8 Jan 2015



Faces in Things

@FacesPics



Following

:(:(:(:(:(:



RETWEETS

982

FAVORITES

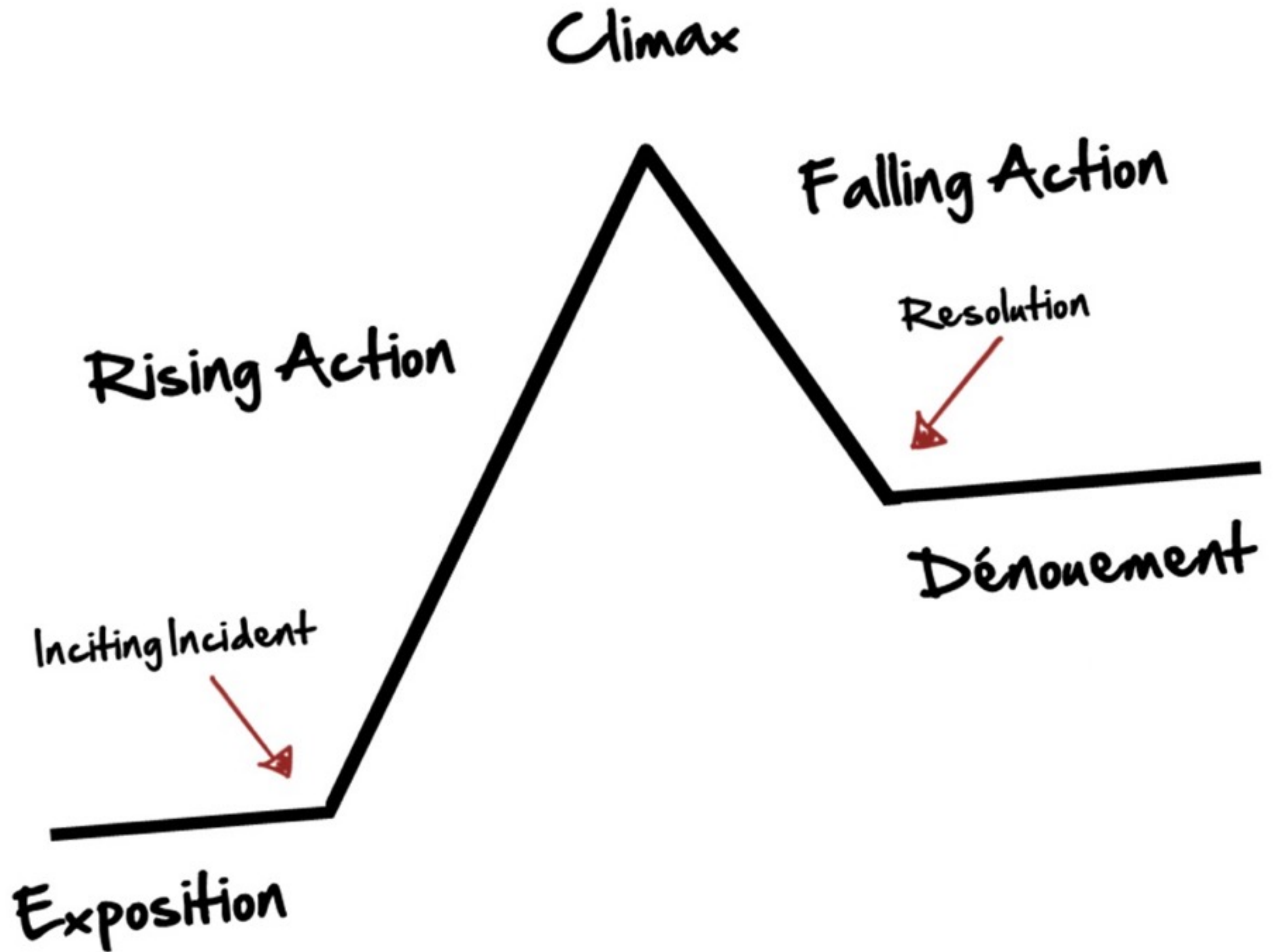
1,522



2:44 PM - 30 Nov 2014

a note...

no stick figures



Exercise: Storyboard first pass

Write a short script for your product's storyboard

Use post-its to draw it frame by frame

Attach the post-its to a 8.5 x 11 sheet and pin up

15 minutes

Exercise: Gallery Walk

Walk around the classroom and review other people's storyboards

Add post-it suggestions underneath their storyboards if you have any suggestions

7 minutes

Assignment

- Revise your storyboard based on the suggestions.
- Draw it out directly on the storyboard template and post it to Build in Progress.

Due Tuesday (before Class)

R e s t o f c l a s s

1 hour for completing projects

30 minutes for show-and-tell

30 minutes for documentation + cleanup