

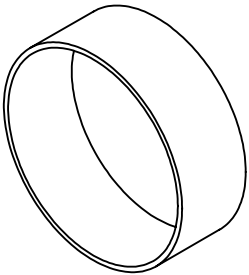
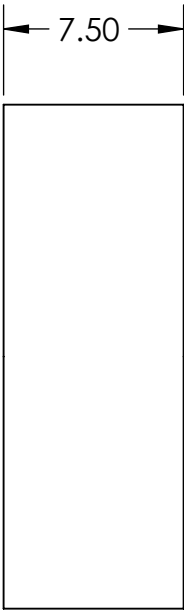
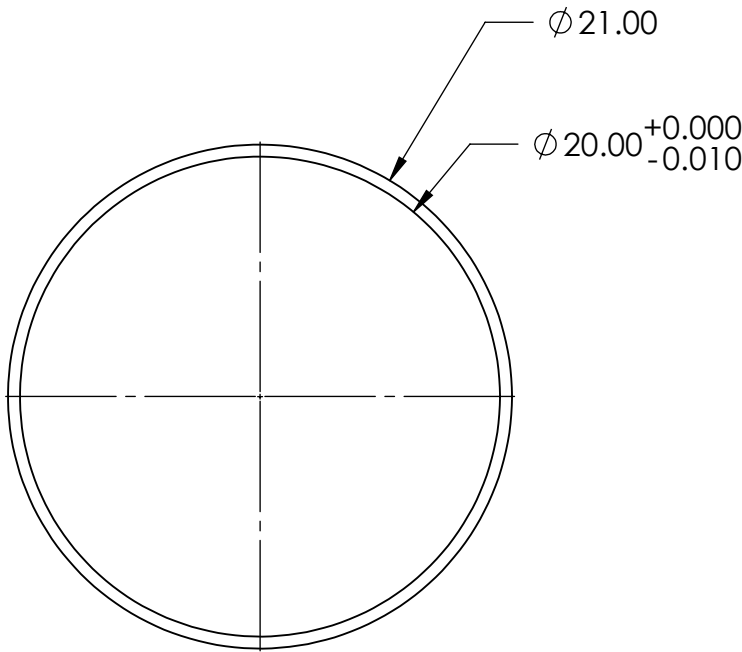
1

2

3

4

| REVISIONS | | | | |
|-----------|------|-------------------------|-----------|----------|
| ZONE | REV. | DESCRIPTION | DATE | APPROVED |
| | A | RELEASE FOR MANUFACTURE | 12/2/2014 | C. VIDAL |



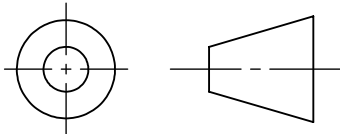
NOTES:


- 1) REMOVE BURRS AND BREAK ALL SHARP CORNERS R0.03 INCHES MAX OR CHAMFER.
- 2) ALL PARTS MUST BE CLEANED AND DEGREASED.

WEIGHT IN POUNDS.

23.56

THIRD ANGLE PROJECTION



| | | | | | | | | | |
|--|--|--|--|---|--------------------------------|----------------|---------------------|------------------------|---------------|
| MATERIAL: 6061-T6 (SS) | | SHOP NOTES: - DO NOT SCALE DRAWING. - BREAK ALL SHARP EDGES. | | <div></div> <div>MASSACHUSETTS INSTITUTE OF TECHNOLOGY LABORATORY FOR NUCLEAR SCIENCE BATES LINEAR ACCELERATOR CENTER</div> | | | | | |
| | | SURFACE FINISH: <div>✓</div> MAXIMUM, ALL MACHINED SURFACES | | | | | | | |
| APPROVALS: | | DATE: | | <div>Moller Hybrid Vacuum Chamber US Endcap port weldment tube</div> | | | | | |
| ORIGINATOR: J. KELSEY | | 11/28/2014 | | | | | | | |
| DRAWN BY: C. VIDAL | | 11/28/2014 | | | | | | | |
| CHECKED BY: J. KELSEY | | 11/28/2014 | | | | | | | |
| APPROVED BY: J. KELSEY | | 11/28/2014 | | | | | | | |
| | | UNLESS OTHERWISE SPECIFIED, DIMENSIONS ARE IN INCHES. TOLERANCES ARE: FRACTIONS: DECIMALS: ANGLES: <div>±1/32 .XX ±.010 ±1° .XXX ±.005</div> | | | | | | | |
| NEXT ASSEMBLY: Moller Hybrid Vacuum Chamber Weldment | | SolidWorks GENERATED DRAWING. FILE LOCATION AND NAME: - | | SCALE: 1:8 | PROJECT #: J-LAB MOLLER | SIZE: B | DRAWING #: - | SHEET #: 1 OF 1 | REV: D |