

CUSTOM-ENGINEERED INTEGRATED MOTION CONTROL SYSTEMS

Seco
AC/DC Drives



1-800-554-8466
www.danahermotionesc.com

Solutions by
DANAHER
MOTION

We Design Solutions

Our services include a full range of custom-engineered systems, designed and manufactured to meet the most stringent motion control requirements.

With unparalleled engineering capabilities, we can provide the best systems solutions for managing and controlling virtually any motion process.

Choose us, and you'll benefit from the technology skills and experience that have proven themselves worldwide, from the smallest of companies, to the largest industrial giants.

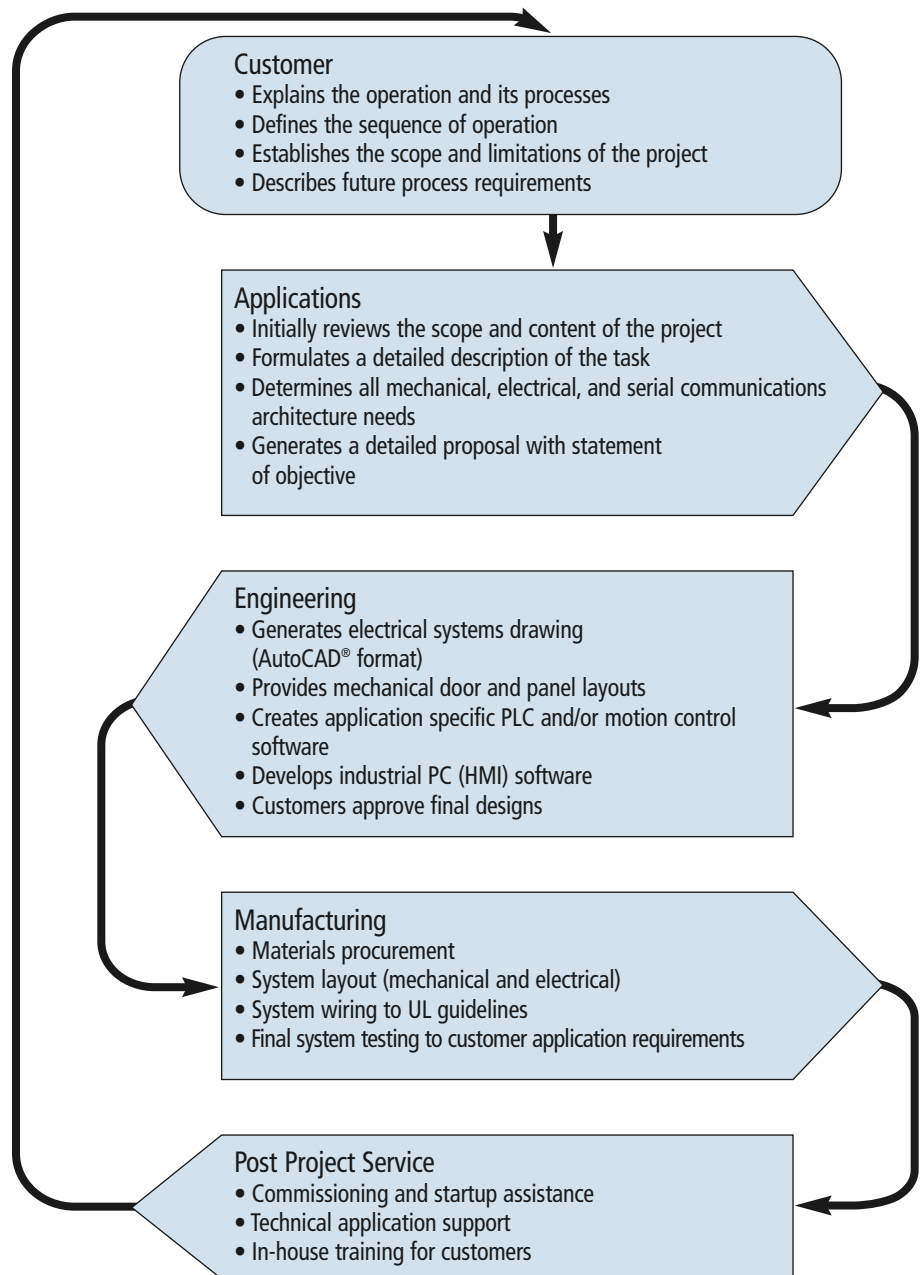
Why Danaher Motion Engineered Systems Center?

We offer:

- Complete turn-key solutions
- Sole sourcing to simplify procurement
- Precision engineered components
- Seamless integration of the latest technology
- Highest quality manufacturing standards
- UL Recognition
- Post project support services

Integrated System Solutions Development

Before devising your system, designers address crucial factors to save you time and money. They establish clearly defined objectives for your application at the outset to eliminate set-up and start-up problems. They also take into consideration both mechanical and software specifications, since hardware and software upgrades are usually needed over the life of a production system as performance requirements change. Designers review in detail mechanical and electrical control, communication and data input requirements, optimization, maintenance, and operational procedures. It is also customary to plot future project requirements.



Major Industries

The depth and breadth of our experience gives us the capability to provide rotary and linear motion control solutions across a broad spectrum of applications.

Our engineers will integrate the most appropriate products into your system. Of course, we will assemble and test the system to ensure its integrity and proper operation prior to delivery.

There's a Solution That's Right for Your Industry:

- Automotive
- Chemical Processing
- Electronic Assembly
- Food Processing
- Medical
- Packaging
- Plastics
- Printing
- Rubber Products
- Semiconductor
- Steel Products
- Textiles
- Wire & Cable





SECO® M5000

- Digital DC Motor Speed Control, 5 to 2000 HP
- Regenerative and Non-Regenerative units
- Compact and Efficient Design
- Built-in Capability for PID Control, Wind/Unwind, and Taper Calculation



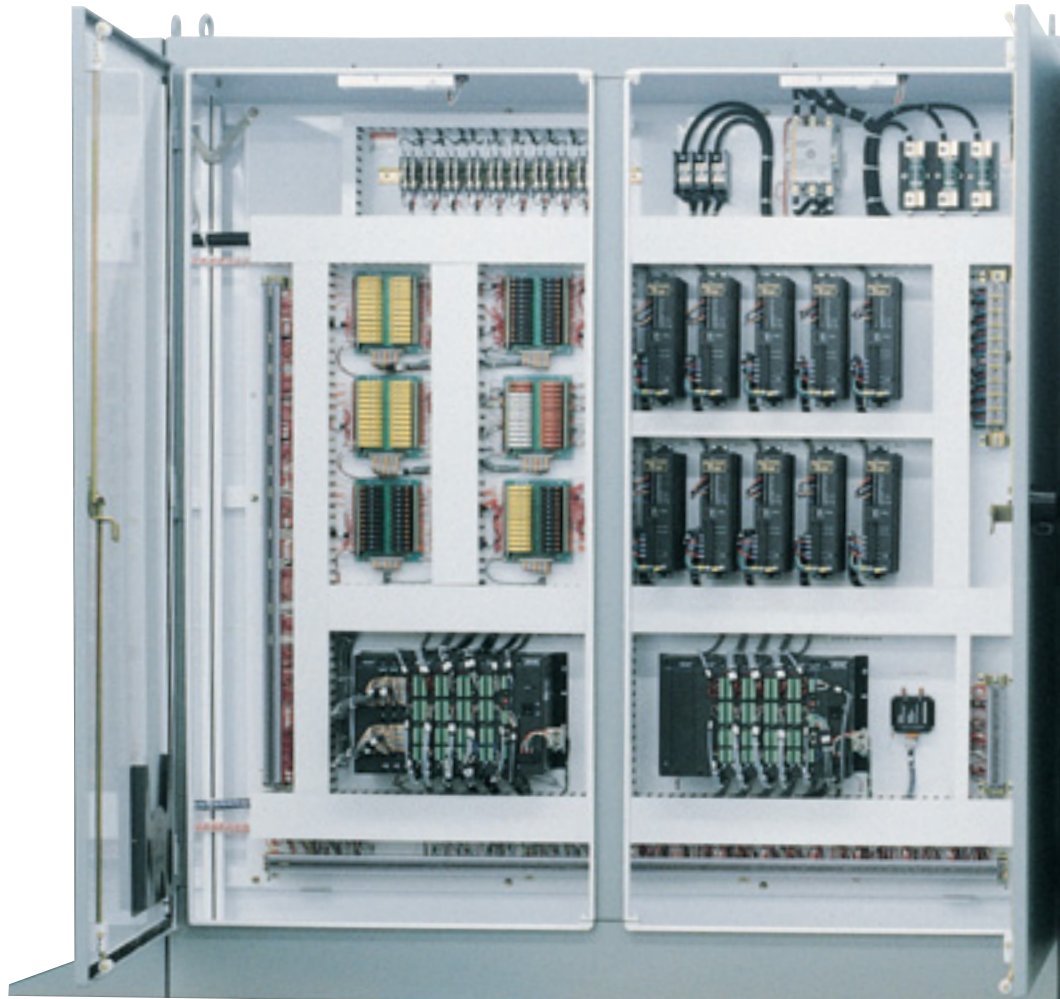
THOMSON LINEAR SYSTEMS

- **Precision Linear Actuator**
Thrust Load to 5620 pounds, Speeds to 51"/sec, Stroke Length to 60"
- **Rodless Actuator**
Max Load Capacity 6000 pounds, Speeds to 200"/sec
- **Linear Slide Tables**
Stroke length to 120", Load Capacity 2000 pounds, Repeatability to .0002"



IDC

- D2400/2500 DC Actuator Controls
- SmartStep Family Intelligent Stepper Drives
- B8961/2 Intelligent Servo Drives
- Performance Matched Motors and Accessories





SECO® AC FLUX VECTOR DRIVE/CONTROL

- Flux Vector/Servo family, 1 to 500 HP
- Open Loop or Closed Loop operation
- Application Software for Winder, PID, Cut-to-length, Indexer
- Fusion Programming Software with Ladder and Function Block Editors



SUPERIOR ELECTRIC SLO-SYN® MOTION CONTROL PRODUCTS

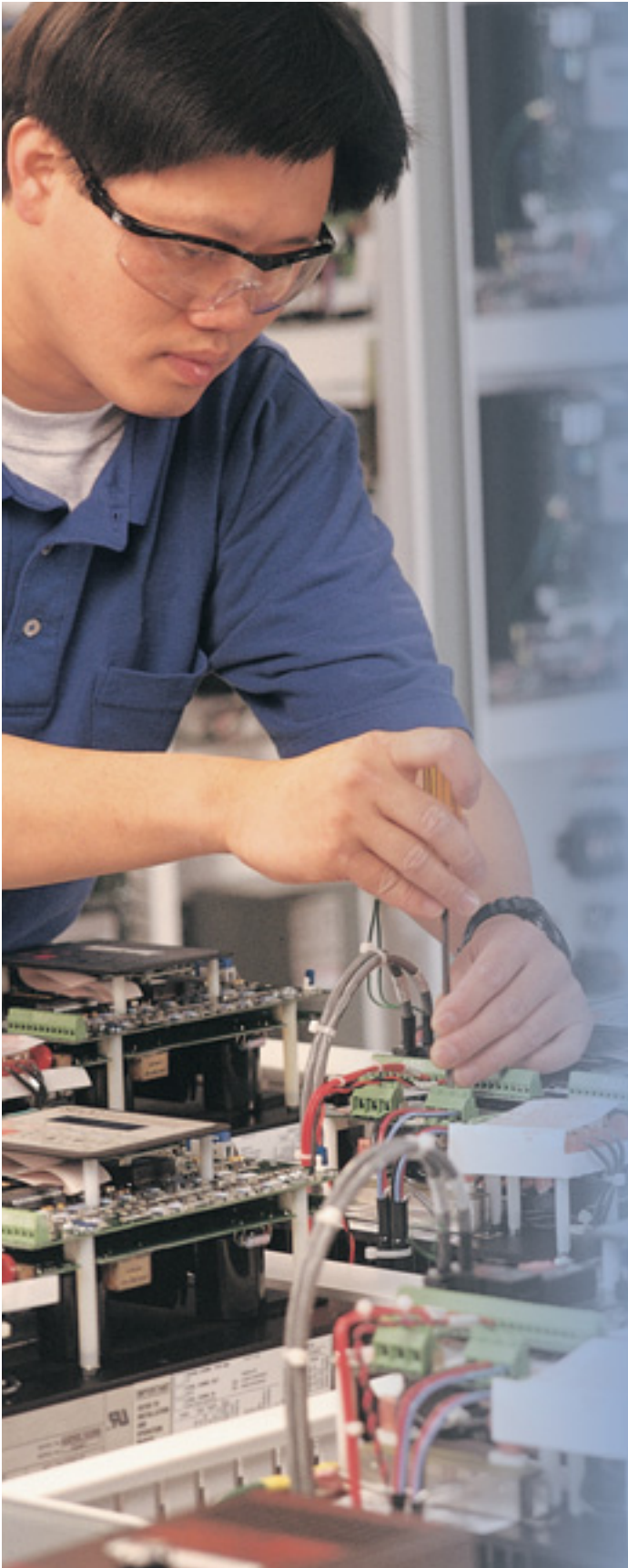
- Standard and High Torque Step Motors
- OEM Drives and Controls
- Integrated Drives and Controls
- Single and Multi-axis Controls
- AC Synchronous Motors



PACIFIC SCIENTIFIC / KOLLMORGEN

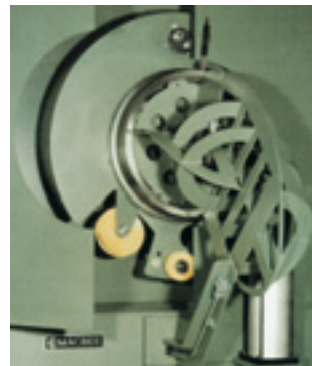
- SERVO and STEP Motor Motion Systems
- Brushed PMDC Motors
- PC3400 & PD2400 Systems
- PC800 Servo Drives
- PMA and PMB Servo Motors
- GOLDLINE® XT Series Servo Motors
- SERVOSTAR® Family of Servo Drives & Controls





Applications

- Balancing Machines
- Coating & Laminating
- Converting
- Dynamometers
- Infeeds
- Material Handling
- Packaging
- Robotics
- Test Stands
- Winders/Unwinders



Wire & Cable

- Dead Block
- Bull Block
- Multi-Pass Draw Machines
- Spoolers
- Take-ups
- Inverted Bull Block



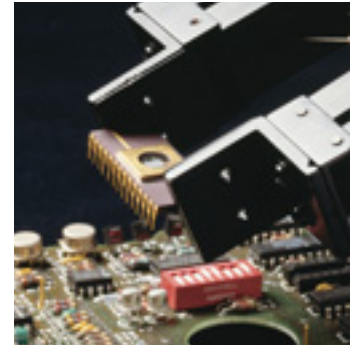
Textiles

- Warpers
- Bleachers
- Slashers
- Tenters
- Dye and Finishing Range

Motion Control Capabilities

Rotary Motion Control

- Electronic Line Shaft
- Tension Control



- Winding/Unwinding
- Slitting
- Printing
- Plating
- Coating
- Laminating
- M-G Set Replacement
- Pumping
- Extruding
- Common Armature

Linear Motion Control

- Pick & Place
- Cut-to-Length
- X-Y Positioning
- Indexing
- Oscillating
- Multi-Axis Interpolation
- Edge Guides
- Lift Tables
- Damper Control
- Chute Control
- Conveyor Gate Diverter
- Wheel Dressing
- Valve Actuation

Post-Project and Support Services

We have the staff, expertise, and subcomponent vendor qualification/ certification capabilities to deliver your project on time. You also have the satisfaction of knowing that you have access to the following post-project services:

Technical Support

Application engineers are available 24 hours a day, seven days a week to assist you with everything from parts replacement to dispatching a service engineer to handle emergency situations. We maintain a large stock of parts and sub-assemblies to provide you with quick turn-around of returned merchandise. In addition, our customers have access to free telephone product support.



Commissioning

Commissioning and start-up assistance typically includes the visual inspection of the installation to ensure proper connections to all drive components, verification of the drive components for proper set-up and calibration, operation of the drive system, and tuning of all drives. The engineer or technician also monitors the operation of your line once it is up and running, and makes final calibrations or adjustments as required for satisfactory operation.



Training

Basic, intermediate and advanced classes, as well as configuration and programming training, can be provided at one of our facilities or at your facility. Witness testing can be provided at the Systems Center. Customized training for maintenance personnel can also be offered at your facility.



EMP

The EMP (Engineered Motion Product) is a pre-packaged solution for linear/positioning applications.

Features Include:

- Stepper or Servo Motion Controller
- Rugged NEMA 12 Enclosure
- Easy to install and commission
- User-friendly Operator Interface



Danaher Motion Linear Motion Systems

As part of the Danaher Motion family, our mechanical and electro-mechanical product offerings include standard and custom linear bearings, shafting, linear guides, ball and lead screws, gearheads, linear actuators, slide tables and systems, precision balls, molded products, resolvers, brakes and clutches, AC and DC adjustable speed drives, stepper and servo motors. Our products are applied worldwide throughout a variety of motion applications in the machine tool, medical, automotive, robotics, industrial, aerospace, office equipment and mobile off-highway markets. Our highly recognized brand names include: Thomson™, Thomson BSA™, Micron™, Harowe™, Deltran PT™, Superior Electric™ and SECO™.



1-800-554-8466

Press 2-2 when prompted.



Seco
AC/DC Drives

* Trademark of Danaher Motion. DANAHER MOTION is registered in the U.S. Patent and Trademark Office and in other countries. The specifications in this publication are believed to be accurate and reliable. However, it is the responsibility of the product user to determine the suitability of Thomson products for a specific application. While defective products will be replaced without charge if promptly returned, no liability is assumed beyond such replacement. ©2003 Danaher Motion. HKM 10K KP 10-3-03 200308-01.qxd MDC-02-01-L100

FOR IMMEDIATE ASSISTANCE:

Internet:	www.DanaherLinear.com	In Europe:	Phone:	+46 (0) 44 24 67 00
			Fax:	+46 (0) 44 24 40 85
In USA, Canada or Mexico:	Phone: 1-800-554-8466 Fax: 1-800-445-0329 E-mail: linear@danahermotion.com Literature: litrequest@danahermotion.com	or write:	Danaher Motion Tollo Linear AB Box 9053 SE-291 09 Kristianstad Sweden	helpdesk@tollo.com
or write:	Danaher Motion 43-45 Channel Drive Port Washington, NY 11050 USA	or	Phone:	+49 (0) 70 22 504-0
			Fax:	+49 (0) 70 22 541-68
In UK:	Phone: + (44) 1271 334 500 Sales Fax: + (44) 1271 334 502 E-mail: information@tiblmail.com			
or write:	Danaher Linear Motion Systems Fishleigh Road, Roundswell Barnstaple EX31 3UA UK	Elsewhere:	Phone:	1 (516) 883-8937
			Fax:	1 (516) 883-7109