



## Short Term Network Connectivity for MIT Guests

MIT offers short-term network service to campus guests. Guests are allowed up to fourteen days of network service when they register on MITnet. To get their personal machine connected to the MIT Guest network, campus visitors need to have wireless network support (WiFi).

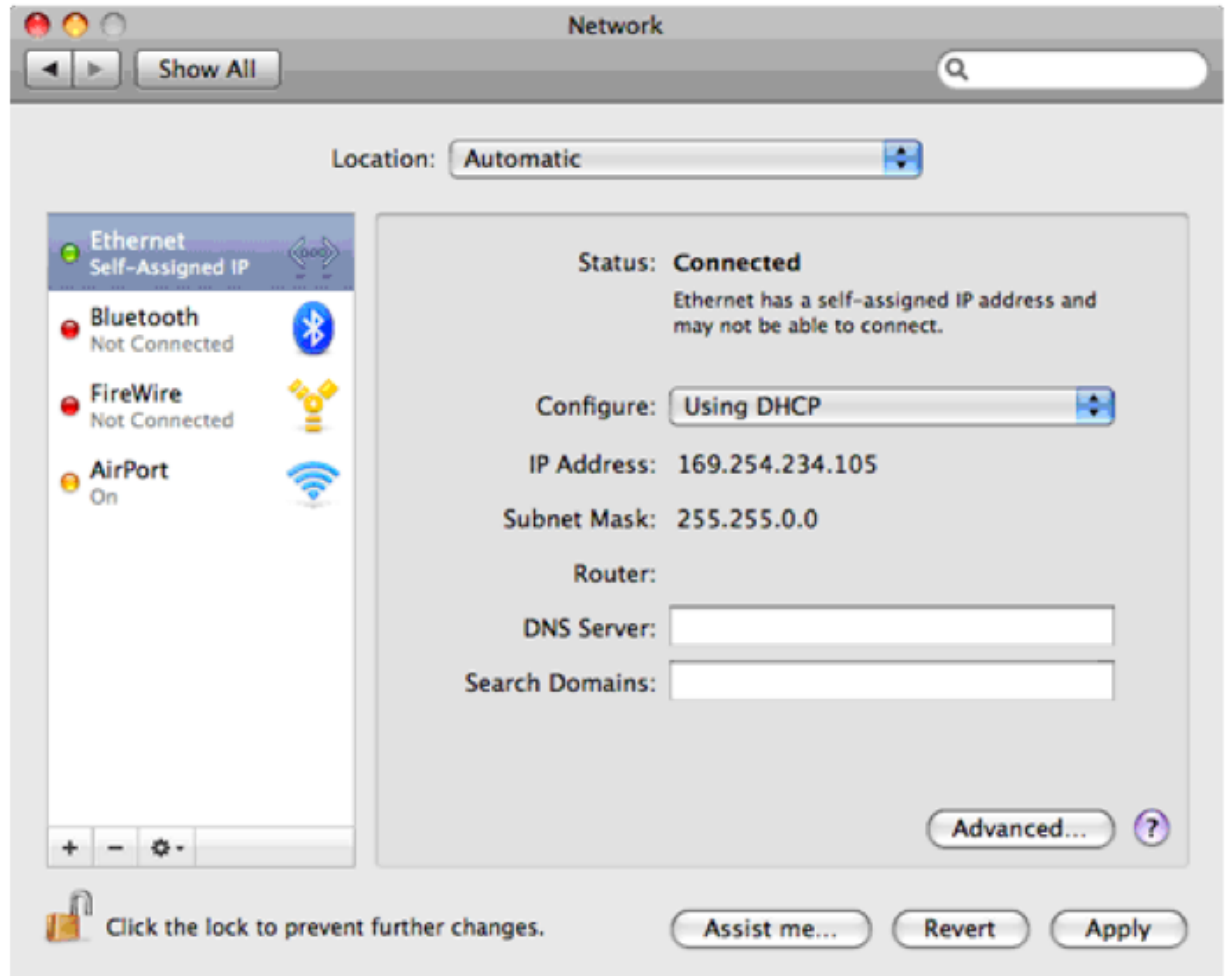
For wireless machines, visitors need to make sure the wireless card is on and enabled. In both cases, the machine needs to be configured for DHCP (obtaining an IP address automatically). Many machines come with their network cards configured for DHCP by default. If the machine is running firewall software, it will need to be disabled until the registration process is complete.

Once their equipment is ready, visitors should open a standard web browser and point it to any web page. This will load a registration page automatically. After selecting Visitor registration, the returned page will display the MITNet Terms of Use followed by a registration screen, requesting the visitor's contact information, number of days of connectivity, and the event for which they are on campus. The network connection takes about ten minutes to activate, and remains active for the number of days selected.

Alumni also have their own network registration area, similar to that for campus visitors.

## Enabling Wireless Support in MacOS X 10.5 and 10.6

- 1) Open System Preferences, either from the Doc or the Apple Menu.
- 2) Click the Network Icon.
- 3) The Network Configuration Page will appear:



- 4) Select "Airport" in the left hand menu.
- 5) Set the "Location" drop down menu to "Automatic".
- 6) Set the Network Name to "MIT Guest".
- 7) Check the Airport status in the menu bar to verify connectivity.

- 8) Start a web browser and load any web page possible (web.mit.edu; www.cnn.com, etc.).
- 9) This will automatically load the MIT Guest registration page.
- 10) Fill out the form.
- 11) Reboot the computer.

## Enabling Wireless Support in Windows

- 1) From the **Start** menu, choose **Control Panel**.  
*Result:* The *Control Panel* window opens.
- 2) Click **Network and Internet**.  
*Result:* The Network and Internet window opens.
- 3) Under **Network and Sharing Center**, click **Connect to a network**.  
*Result:* Either a *Currently connected to:* or *Not connected* window opens, showing which connections are available.
- 4) Select the **MIT GUEST** network.
- 5) Click **Connect**.
- 6) Start a Web Browser such as Internet Explorer or Firefox and load any web page on the Internet (web.mit.edu; www.cnn.com; etc.)
- 7) The MIT GUEST registration page will appear instead.
- 8) Fill out the MIT GUEST Registration page and press the **SUBMIT** button.
- 9) Once the registration is complete, please reboot the computer.