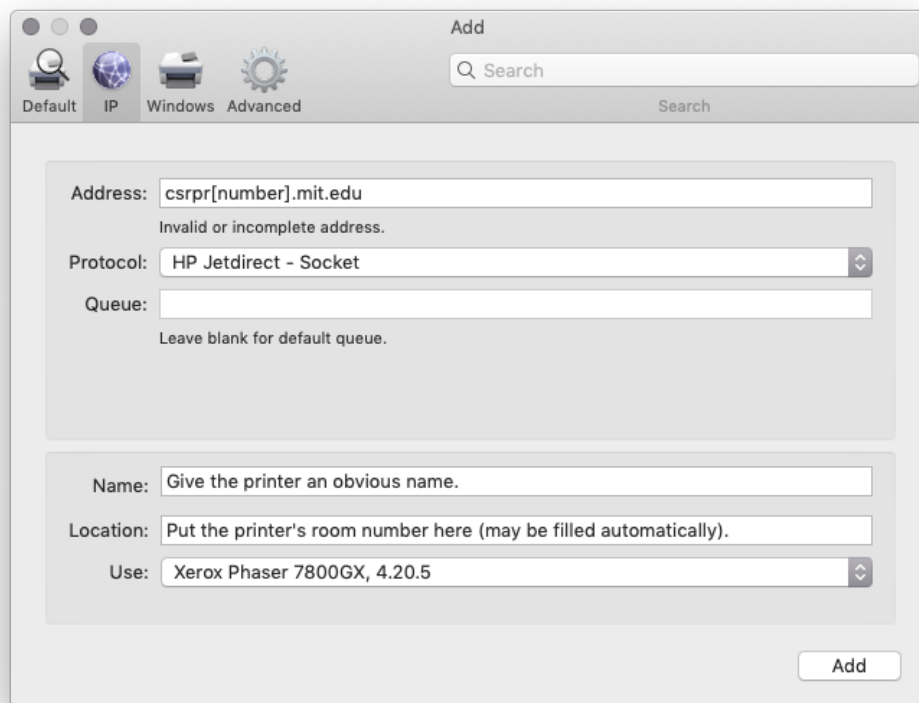




This printer's IP address is going to be renumbered. If you suddenly have difficulty printing, you may need to delete the printer from your computer and set it up again.

**Procedure:**

1. Open System Preferences.
2. Select *Print & Fax*.
3. Click the  underneath the list of printers in the left pane and go to the IP tab in the resulting window.
4. Fill in the information as shown in the illustration. Replace the entry in the **Address** field with the printer's hostname, as identified on the printer's label. For example, put `csrpr27.mit.edu` in the field in order to set up the Phaser 7800 in 37-518.



5. Make sure that the **Protocol** menu is set to **HP Jetdirect - Socket**.
6. Computers on the wired network should automatically populate the **Use** menu with the correct driver. If it instead recommends a generic driver, choose "Select Software..." from the menu and find the appropriate driver in the list.  

If the driver does not appear in the list, close the window, download and install the driver package from <http://support.xerox.com>, and start the process again.
7. Click the Add button.
8. Computers on the wired network should automatically configure the printer's options. Laptops and other wifi-based computers should be fine with the default options.