

Shivaree!

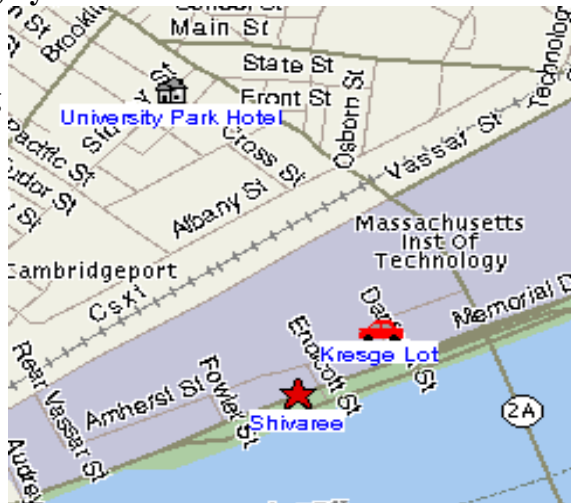
6pm – Midnight, May 25th
Burton-Conner Dining Room (Porter Room)
410 Memorial Drive (entrance is on Amherst Street)
A light dinner and munchies will be served. No alcohol, please.
Panic button: 617-359-0941 (Marleigh's cell phone)

shiv.a.ree \.shiv-*-'re-, 'shiv-*-. n [F charivari] : a noisy mock serenade to a newly married couple - shivaree vt

Parking is Available! There's a parking lot nearby Burton-Conner called the Kresge Lot. It is free and open on Sundays. It is often full when there is an event going on, but it is currently after finals and before graduation, so spaces should be available.

Directions from the University Park Hotel, by Car or Foot:

First, get to Massachusetts Avenue. While facing Mass Ave, turn right. Stay on this side of the street and go straight. Keep going straight. If you hit the river, you've gone too far, but only by a little bit. Keep your eyes open for the Grand Entrance to MIT on your left at 77 Mass Ave. You can't miss it, it's the giant building with huge Roman columns that says "Massachusetts Institute of Technology" on it. When you see that, keep going until the next right. That's Amherst Street. Turn right onto Amherst. [Note for any drivers: There are lights at 77 Mass Ave and at the corner of Amherst Street. They're pretty close together, so keep your eyes open.] Go straight. You should see Kresge Lot



dead ahead. If you're driving, park here. Continue down the street, passing various fraternities and dormitories on your left as you go. After a bit, you'll see ATΩ and KΣ, then Burton-Conner. The building will protrude a bit over the sidewalk just ahead of you. That protrusion is the Burton-Conner Dining Room, your destination. For now, turn left and go in the main entrance, which has 410 Memorial Drive written over it.

You'll need to be buzzed in by the desk worker. They'll have a list, so if they ask, just tell them you're with the shivaree.

Elevator: It's next to the door you just walked through. Hit 1. When you exit, go straight, then turn right at the wacky metal pillars to enter the Dining Room.

Stairs: Continue past the front desk and down the hall. There should be some stairs on your left. As you go, notice the restrooms, which are down the hall behind the stairs. Ascend the stairs and turn left. You should see the wacky metal pillars and the entrance to the Dining Room.

At the door, you will be greeted by our door monitor, Joe, and a policeman. Don't worry, they're supposed to be there. Just tell them your names and they'll let you in. You have now finished running the gauntlet. Welcome!