

New Institute at MIT

Munther A. Dahleh



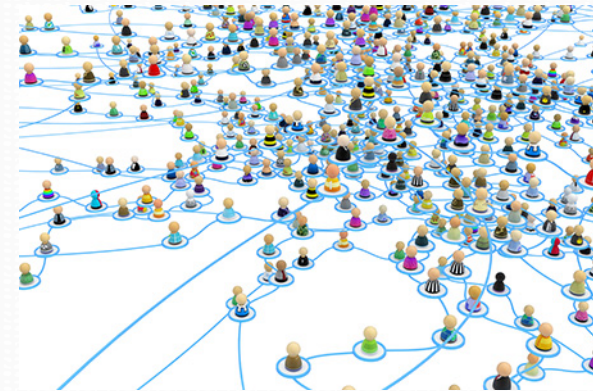
Societal Problems



Energy



Transportation



Social Networks



Healthcare



Financial Systems



Communication

Overarching Challenges



Modeling and Prediction



Resilience and Systemic Risk



Welfare and Sustainability

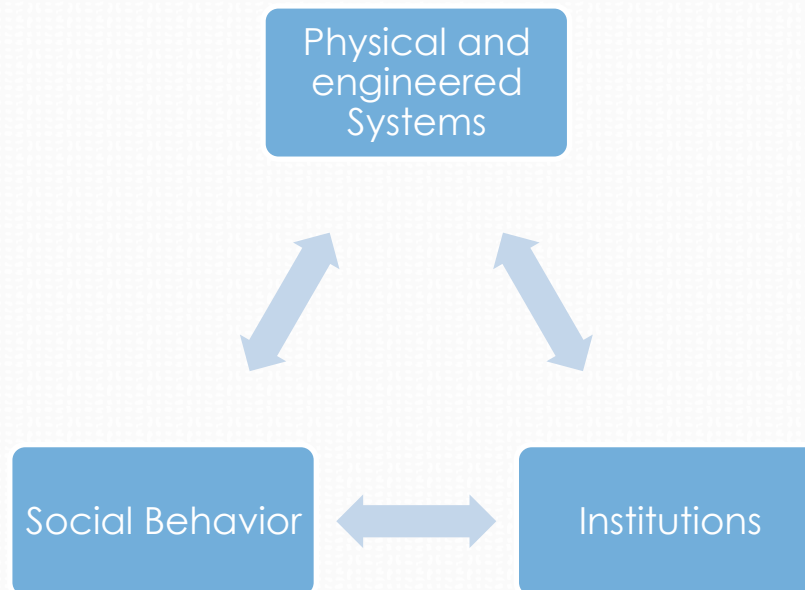


Design and Architecture

The Opportunity

Interactions between engineered and natural physical systems, institutions, and social behavior (Complex Systems)

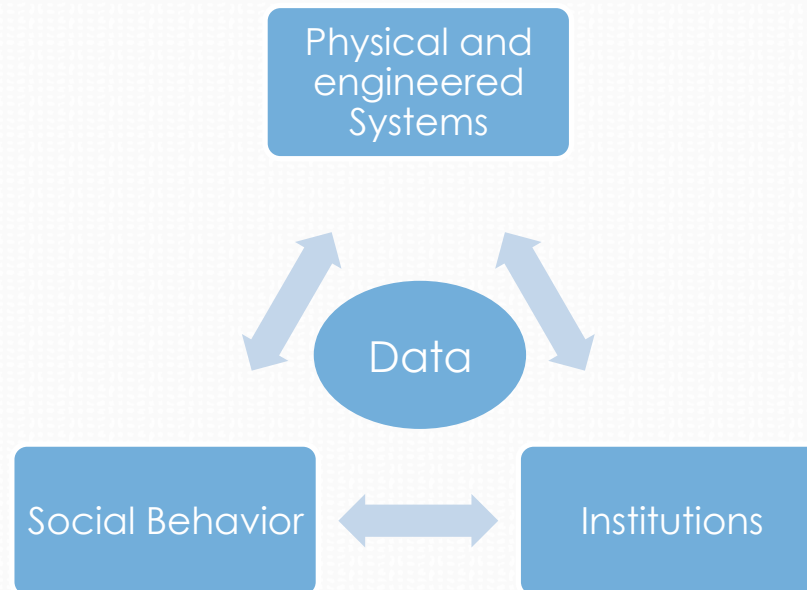
Availability of large heterogeneous data on such interactions



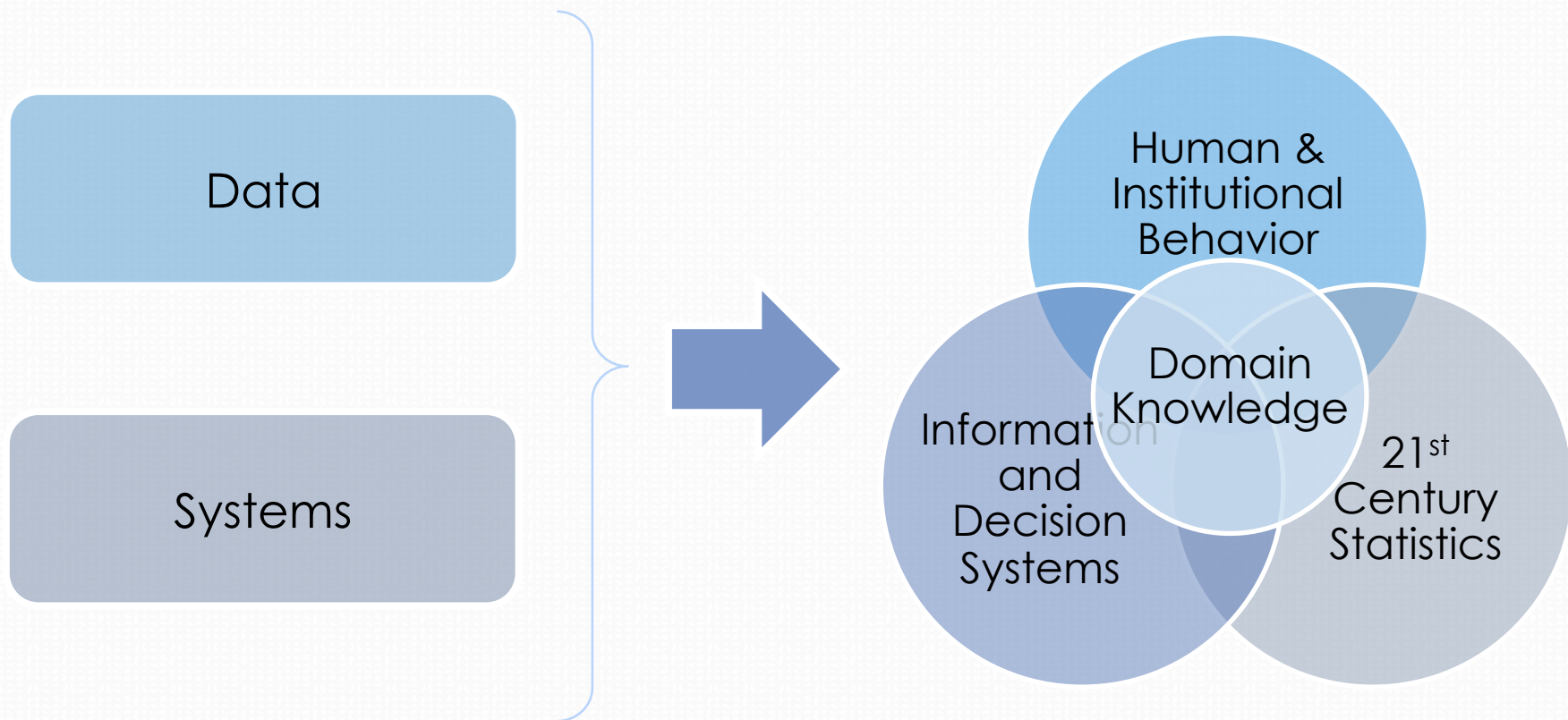
The Opportunity

Interactions between engineered and natural physical systems, institutions, and social behavior (Complex Systems)

Availability of **large heterogeneous data** on such interactions



Entity: Intellectual Pillars



Mission

- *Create a research and educational environment that enables analyzing, predicting, designing and controlling complex societal and technical systems.*
- *Create an Institute-wide focal point for advancing MIT's research and educational programs related to 21st century statistics.*
 - *Research in the entity will address overarching Challenges*
 - *Research will connect closely with domain expertise*
 - *Educational and research methodologies will be anchored in the cross-disciplinary fields **of statistics, information and decision sciences, and human and institutional behavior.***



Thank You

