

Learner Activity Sheet 2: Transformations

Description:

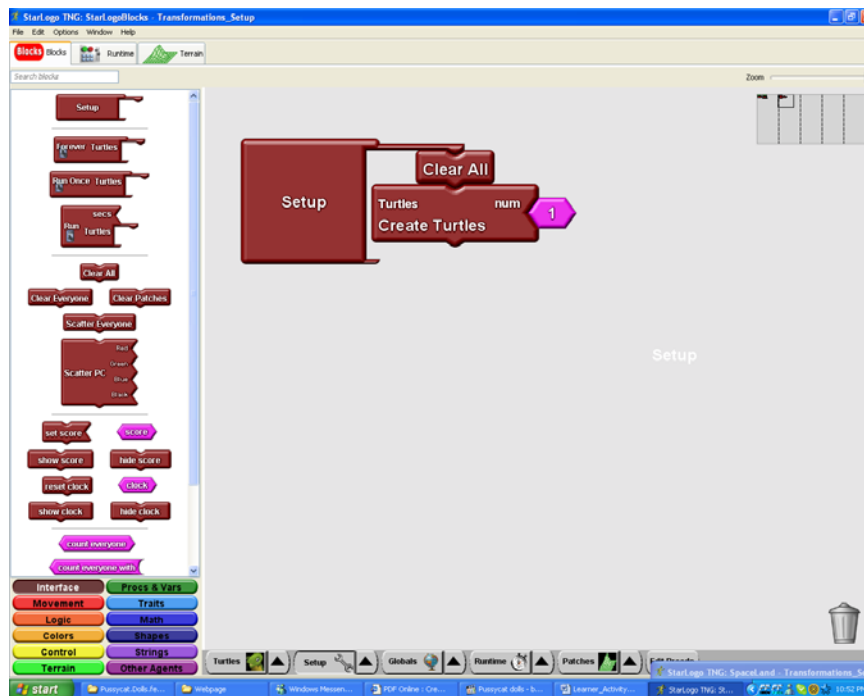
This activity requires you to draw a square given different line segments. There are 2 line segments.

The first line segment is produced by the procedure *Line_Segment1*.

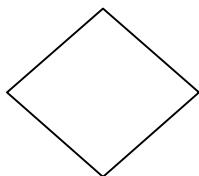
The second line segment is produced by the procedure *Line_Segment2*.

Your Task:

1. Double-click on the *setup* programming block in the programming area which will create a turtle as shown below. The *setup* programming block is shown below.



2. Create a program to draw a square using procedure *Line_Segment1*. Do not erase this drawing and proceed with the next task.
3. Create a program to draw a square using procedure *Line_Segment2*. The square drawn using *Line_Segment2* should appear as follows.



After completing steps 1 to 3, you should have the drawing shown below.

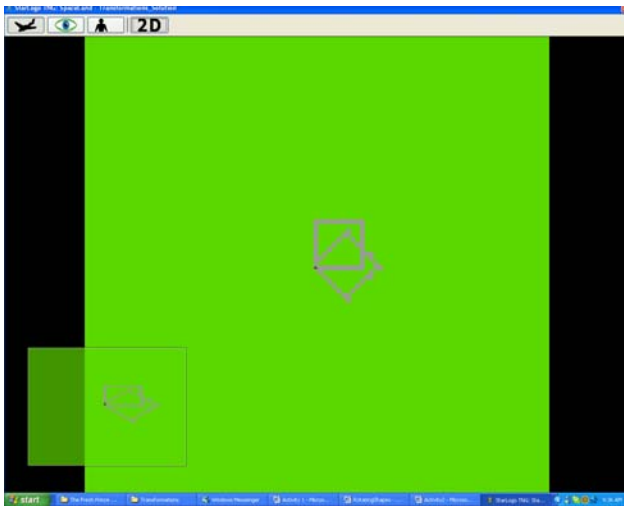


Figure 1

4. Now, create a program to produce the drawing shown below.
 - a. Create a program that makes use of the procedures that you have created earlier.
 - b. Create another program that does not.

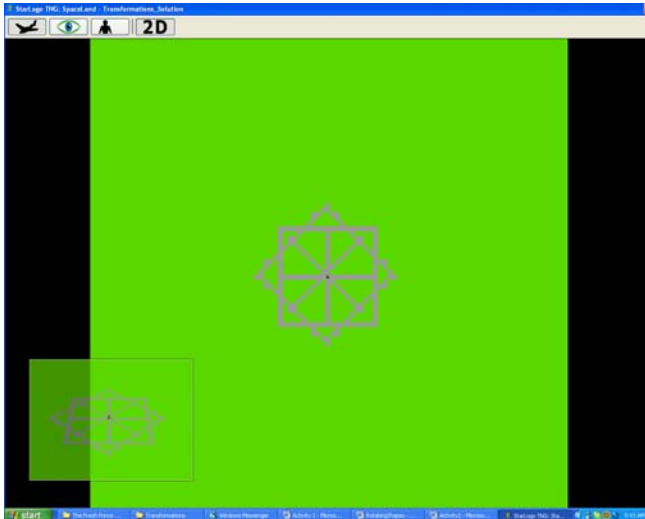


Figure 2

5. Create the following diagram using procedure *Line_Segment1*.

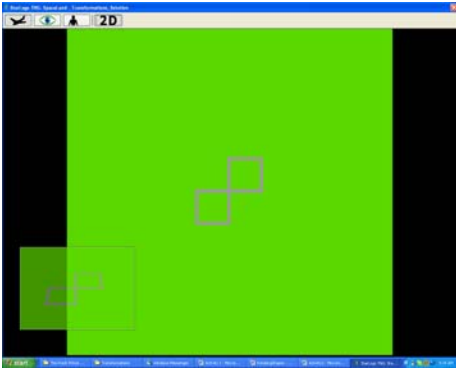


Figure 3

Items for submission:

1. Program for creating a square using procedure *Line_Segment1*
2. Program for creating a square using procedure *Line_Segment2*.
3. Program for creating Figure 2 using procedures *Line_Segment1* and *Line_Segment2*
4. Program for creating Figure 2 without using procedures *Line_Segment1* and *Line_Segment2*.
5. Program for creating Figure 3.