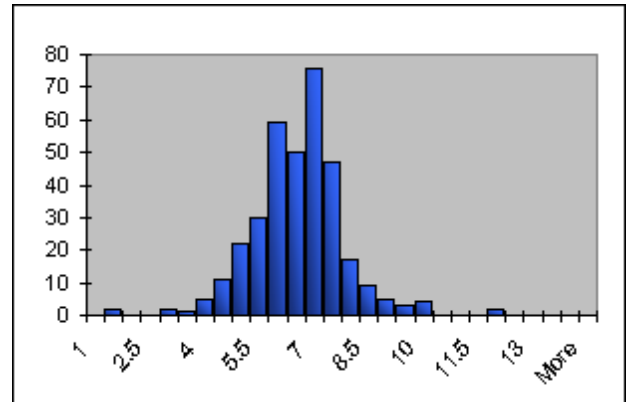


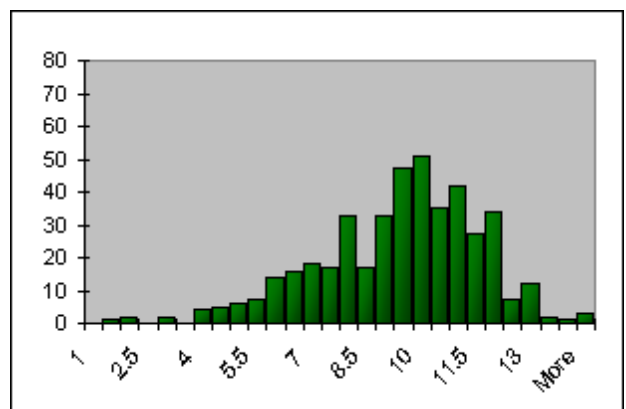
Schooldays

	<i>Bedtime</i>	<i>Wakeup</i>	<i>Hours</i>
Mean	2.182551	8.654145	6.471594
Median	2.25	8.25	6.5
Mode	2	8	6
St dev	1.272322	1.137751	1.266149
SEM	0.068599	0.061343	0.068266
95 CI	2.048097	8.533912	6.337793
	2.317005	8.774378	6.605396



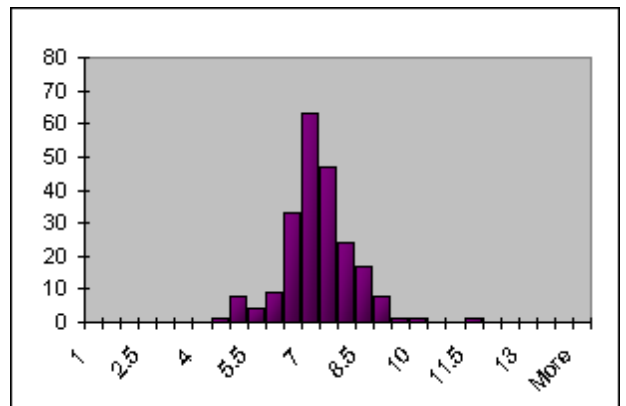
Non-schooldays

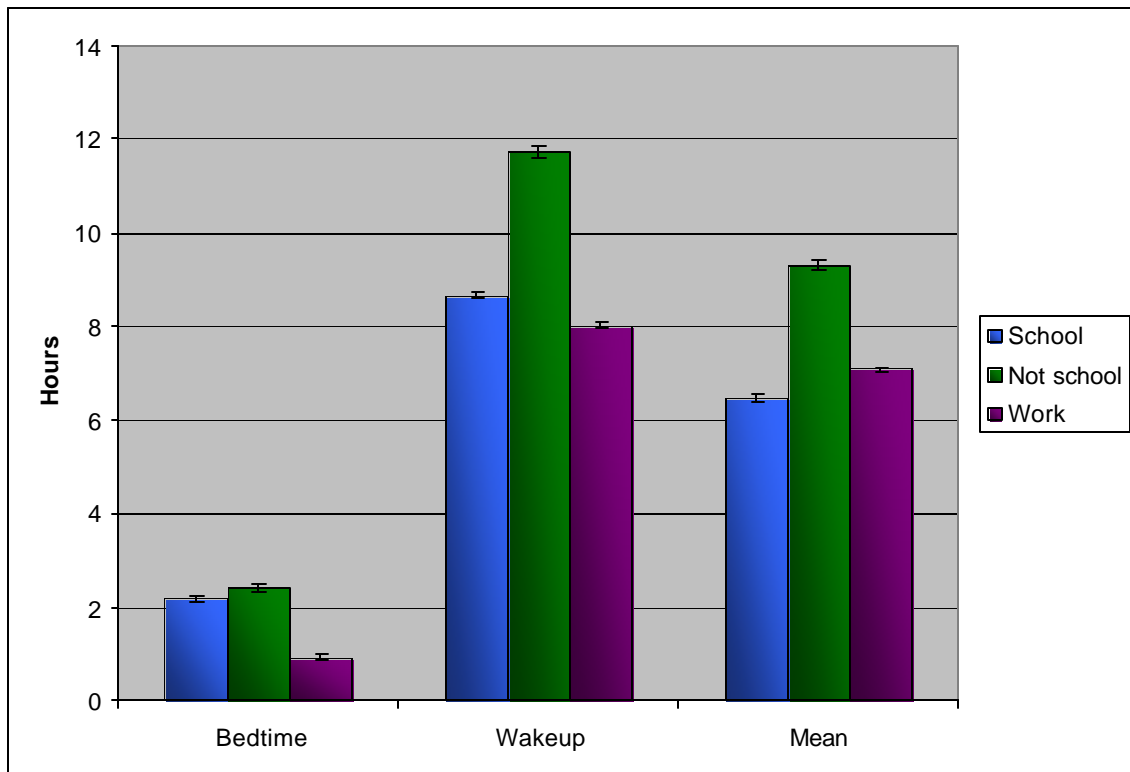
	<i>Bedtime</i>	<i>Wakeup</i>	<i>Hours</i>
Mean	2.425688	11.74757	9.321881
Median	2	12	9.5
Mode	2	11	10
St dev	1.575092	2.308084	2.227136
SEM	0.07552	0.110664	0.106783
95 CI	2.277669	11.53067	9.112586
	2.573707	11.96447	9.531175



Workdays

	<i>Bedtime</i>	<i>Wakeup</i>	<i>Hours</i>
Mean	0.930876	8.020507	7.089631
Median	0.75	7.75	7
Mode	1	7.75	7.25
St dev	0.993528	0.991746	0.92814
SEM	0.067601	0.06748	0.063152
95 CI	0.798378	7.888247	6.965854
	1.063374	8.152767	7.213409





I get more sleep on non-schooldays than on schooldays, and an intermediate amount on workdays.

Note: A “schoolday” is defined as a day on which my primary purpose for getting out of bed is to attend class. A “workday” is defined as a day on which my primary purpose for getting out of bed is to go to the lab; by definition, there is no school on a workday, but the day may or may not be a weekday or holiday. A “non-schoolday” is a day, such as a weekend or vacation, which does not fall into either of the other two categories.

Schoolday statistics by class year

Bedtime

	Overall	Freshman	Sophomore	Junior
Count	345	87	137	121
Mean	2.182551	3.100345	2.430657	1.241736
Median	2.25	3	2.5	1
Mode	2	3.5	3	1
St dev	1.272322	1.318879	1.23871	0.643828
SEM	0.068599	0.143053	0.106611	0.058773
95 CI	2.048097	2.819962	2.221699	1.12654
	2.317005	3.380728	2.639615	1.356931

Wakeup

	Overall	Freshman	Sophomore	Junior
Mean	8.654145	9.268046	8.708832	8.150826
Median	8.25	9	8.75	8
Mode	8	9	8	8
St dev	1.137751	1.549373	0.93764	0.679675
SEM	0.061343	0.168053	0.080699	0.062046
95 CI	8.533912	8.938662	8.550662	8.029217
	8.774378	9.59743	8.867003	8.272436

Total Sleep

	Overall	Freshman	Sophomore	Junior
Mean	6.471594	6.167701	6.278175	6.909091
Median	6.5	6	6.25	7
Mode	6	6	6.75	7
St dev	1.266149	1.478066	1.248235	0.98054
SEM	0.068266	0.160319	0.107431	0.089511
95 CI	6.337793	5.853476	6.06761	6.73365
	6.605396	6.481926	6.48874	7.084532