

# UPLOADING FILES TO YOUR PERSONAL WEB SPACE

This document describes the basic process and outlines the steps required to upload files to your personal web space.

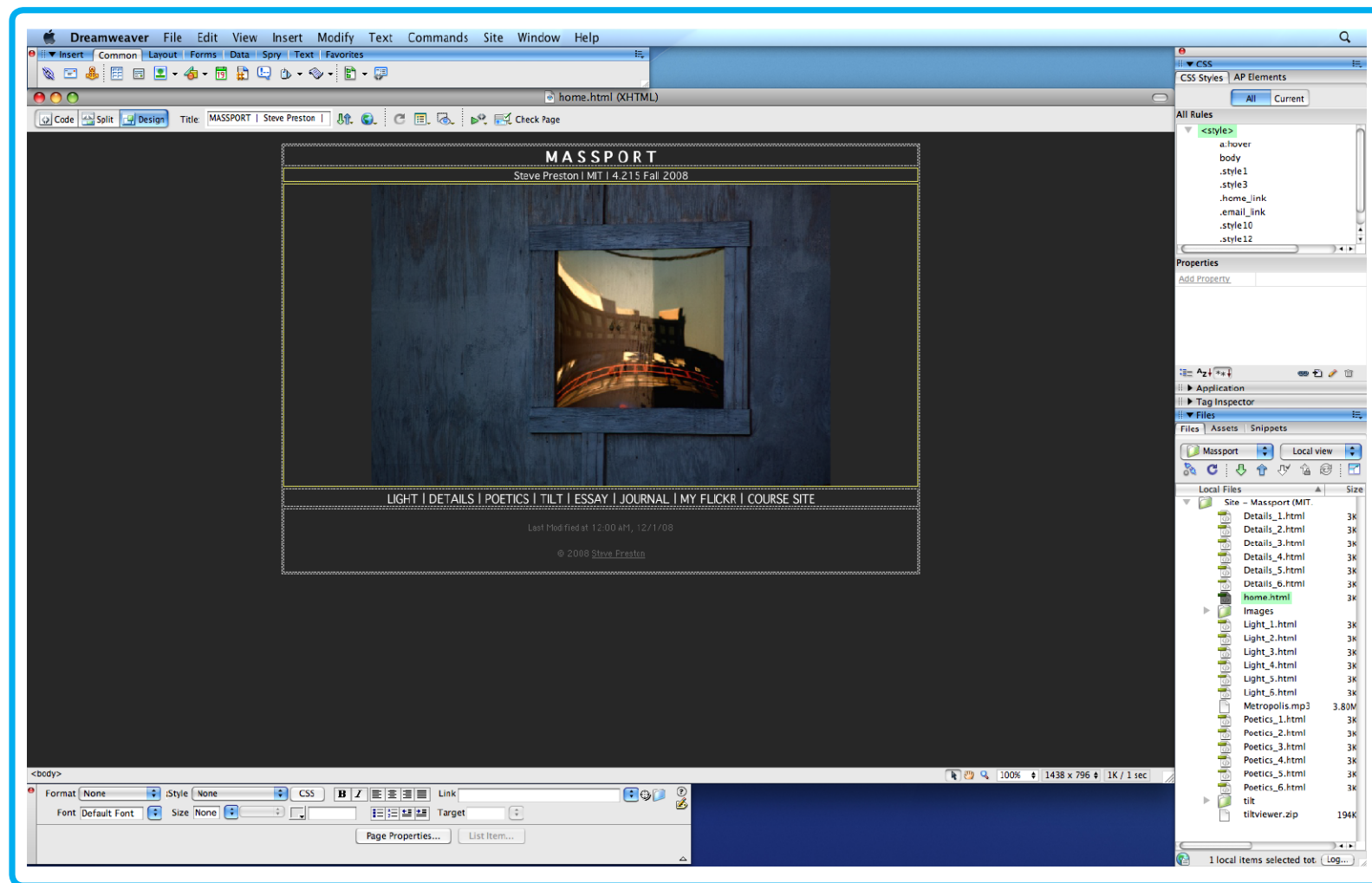
4.215J/11.309J - SENSING PLACE : PHOTOGRAPHY AS INQUIRY - FALL 2009

PROFESSOR : ANNE WHISTON SPIRN

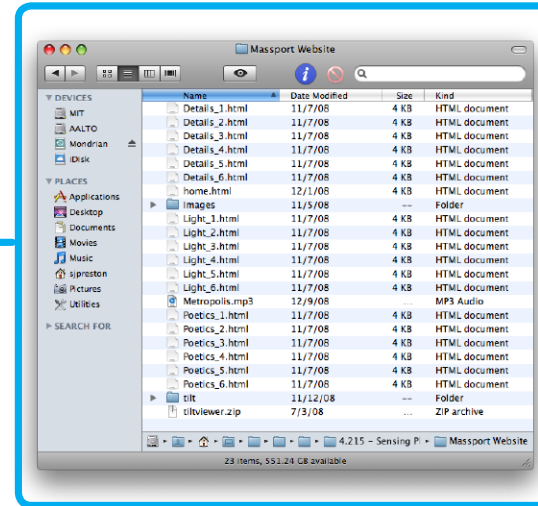
TA : STEVE PRESTON

MASSACHUSETTS INSTITUTE OF TECHNOLOGY

# BASIC WEBSITE UPLOADING PROCESS



1

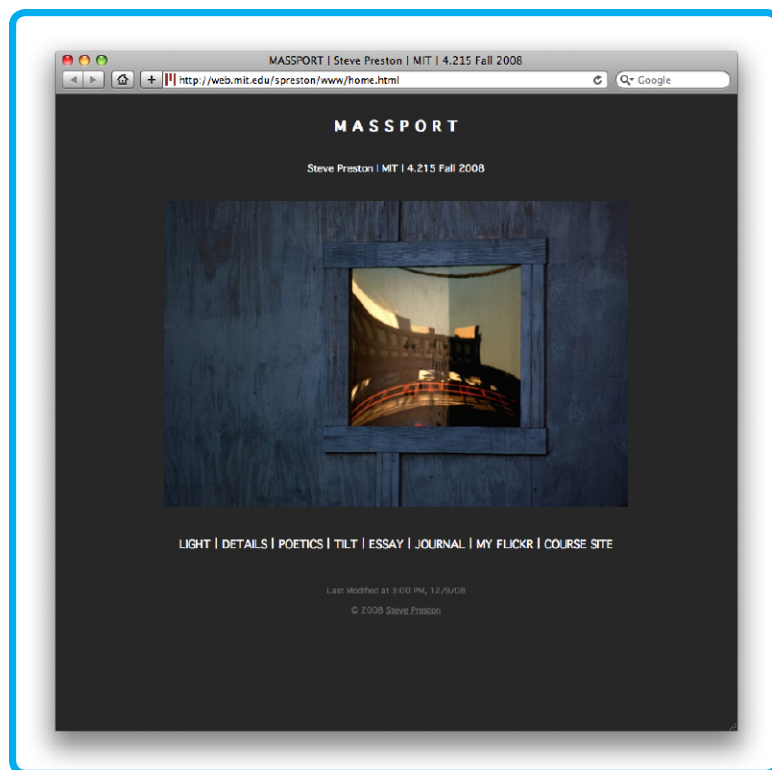


2

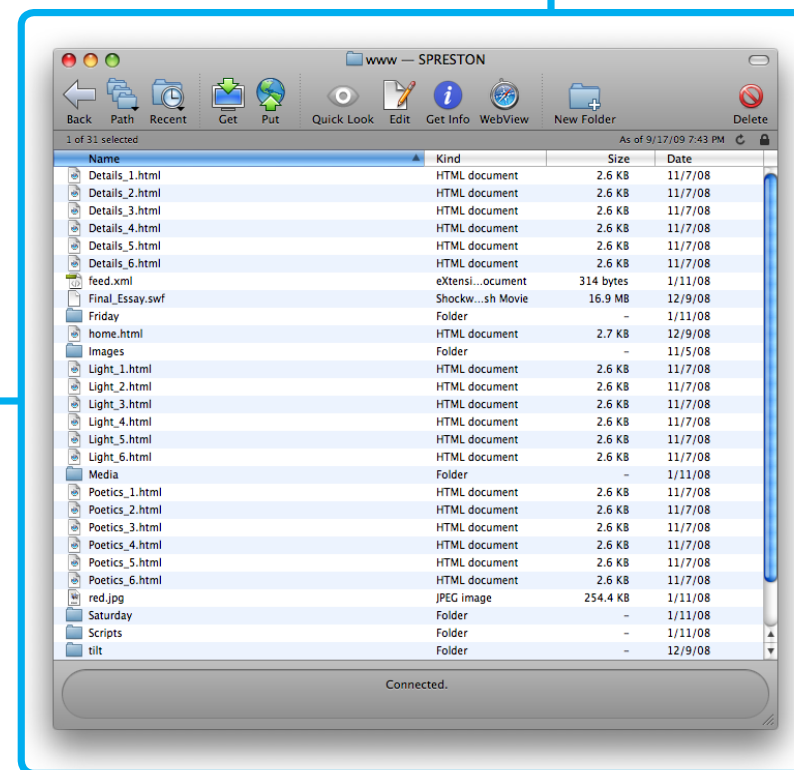
Here's the basic procedure you will be using to upload your website (details to follow in this tutorial):

1. Create / edit your website using Dreamweaver (or software that you may already use).
2. Your website files should all be contained and saved in one place on your computer.
3. Using Fetch (Mac) or SecureFX (Windows), upload/update the files to your personal webspace.
4. View your published site on the web.

3



4



NEXT PAGE: Personal webspace

# PERSONAL WEBSITE

The website files you upload will go into your personal webspace folder. This is the "www" folder you see when you go to:

[http://web.mit.edu/your\\_user\\_name](http://web.mit.edu/your_user_name)

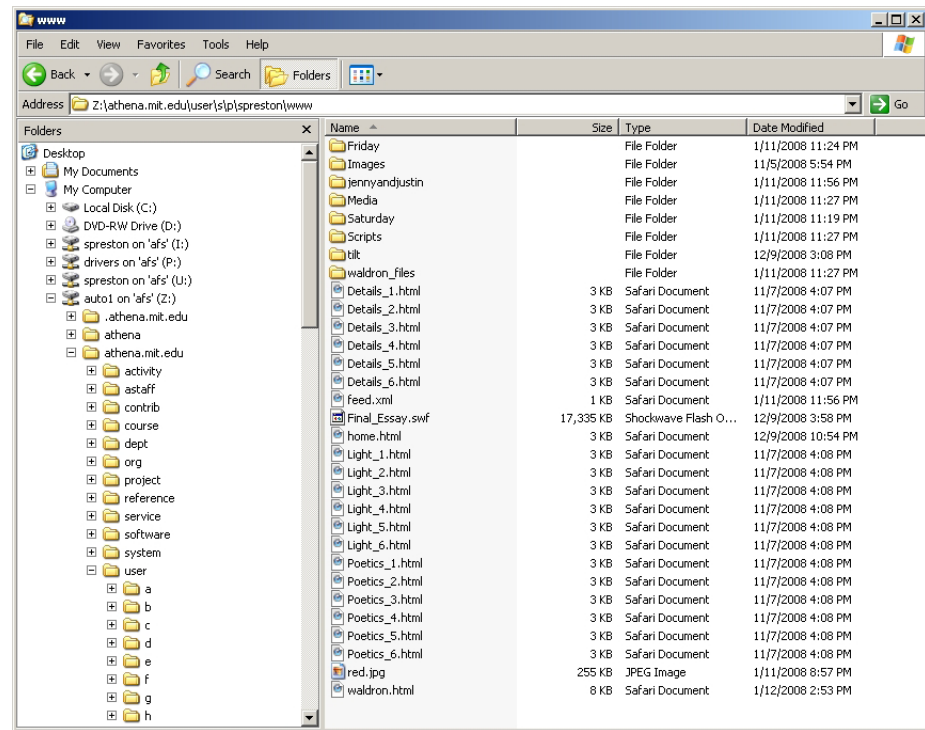
NEXT PAGE: Uploading Software



The screenshot shows a web browser window titled "Index of /spreston". The address bar contains "http://web.mit.edu/spreston/" and a search box with "Google". The main content area displays a directory listing for "/spreston" with columns for Name, Last modified, Size, and Description. The listing includes a "Parent Directory" link, several folders (Desktop/, MacData/, Mail/, OldFiles/, Private/, Public/, www/), and a file named "welcome". At the bottom, it says "Apache/1.3.41 Server at web.mit.edu Port 80".

<u>Name</u>	<u>Last modified</u>	<u>Size</u>	<u>Description</u>
 <a href="#">Parent Directory</a>	12-Aug-2009 10:05	-	
 <a href="#">Desktop/</a>	22-Aug-2006 17:02	-	
 <a href="#">MacData/</a>	18-Sep-2009 16:12	-	
 <a href="#">Mail/</a>	10-Jul-2009 14:00	-	
 <a href="#">OldFiles/</a>	10-Jul-2009 13:52	-	
 <a href="#">Private/</a>	19-Mar-2007 13:50	-	
 <a href="#">Public/</a>	14-Sep-2009 09:06	-	
 <a href="#">welcome</a>		-	
 <a href="#">www/</a>	19-Sep-2009 14:20	-	

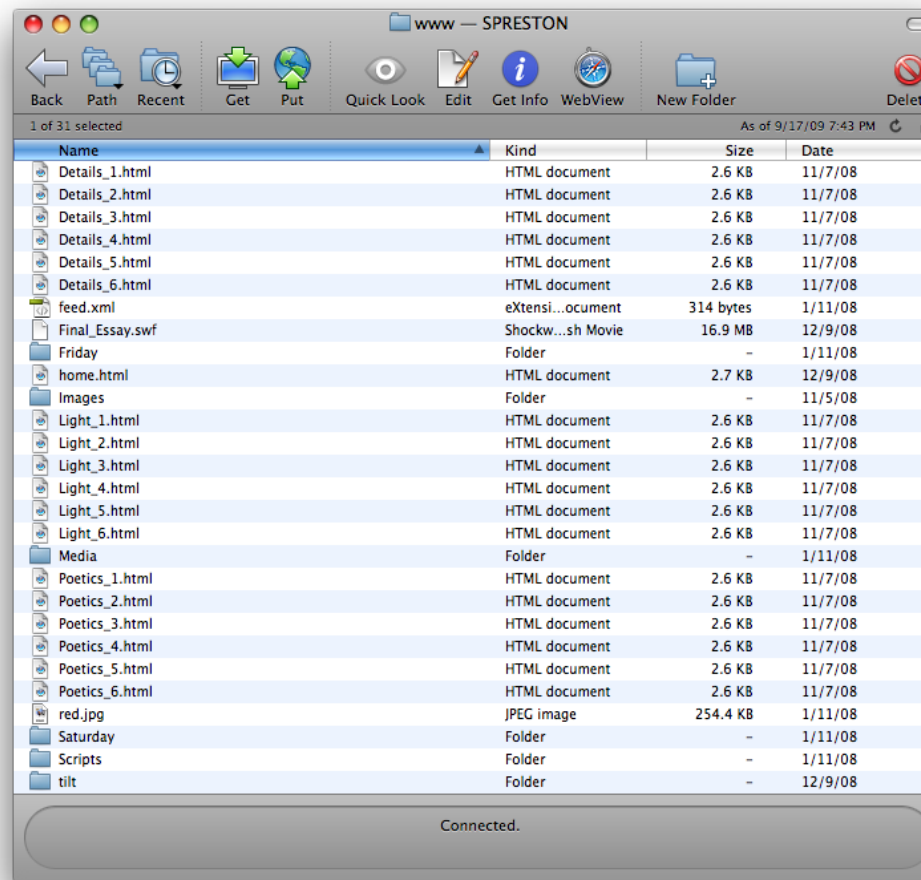
Apache/1.3.41 Server at web.mit.edu Port 80



## Open AFS (Windows)

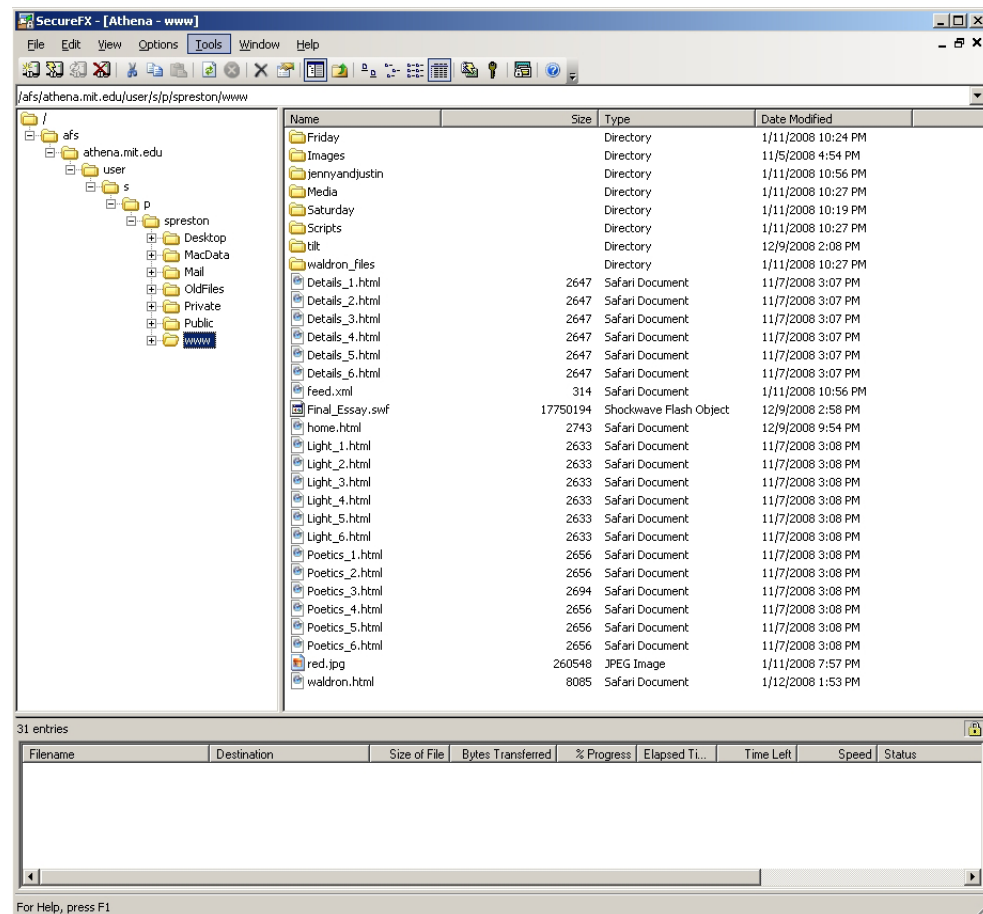
# UPLOADING SOFTWARE

## Fetch (MAC)



There are a number of ways to upload files to your personal webspace. Here are three examples: Open AFS, Fetch, and SecureFX. Uploading via (Open) AFS can be done from any of the architecture department computers. Fetch and SecureFX are programs you can download and use on your personal computer. I will describe how to obtain and use Fetch and SecureFX in the following pages.

NEXT PAGE: Fetch for MAC



## SecureFX (Windows)

# FETCH FOR MAC

Fetch 5.3 for Macintosh | IS&T

http://ist.mit.edu/services/software/fetch/53

Information Services & Technology

Home | About IS&T | Contact Us | For IS&T Staff

Search  Go Advanced Search

Getting Started With IT | **Services & Resources** | Support | Security | Initiatives

Home / Services And Resources / Software

## Fetch 5.3 for Macintosh

MIT Status: Standard

What you'll find on this page:  
[About This Version](#)  
[System Requirements](#)  
[How to Obtain](#)  
[Installing](#)  
[Using](#)

### About This Version

Fetch is Macintosh software for transferring files safely across the network to another computer using FTP (File Transfer Protocol). It uses Kerberos and encryption to make your logon secure and your transfer of data secret.

Fetch 5.3 is fully compatible with Mac OS X 10.5 (Leopard).

- [Fetch 5.3 for Macintosh: New Features](#)

### How To Obtain

[Download Now](#) via MIT Software Distribution.  
This software is made available free of charge to authorized members of the MIT community.

### System Requirements

Below are the requirements needed in order to run Fetch 5.3 at MIT.

- **Computer/Processor:** Intel-based, or Power PC G5 or G4 Macintosh
- **Operating System:** Mac OS X 10.4 or later, including 10.5
- **Memory:** 3 MB
- **Disk Space:** 3.3 MB
- **Additional requirements:**
  - [Kerberos Extras](#) installed

For the latest IS&T hardware recommendations, see [Hardware Guidelines for Computing at MIT](#).

### Installing

[Fetch 5.3 for Macintosh: Installation Instructions](#)

### Using

- [Fetch 5.x for Macintosh: Using Fetch at MIT](#)

### IS&T Service Desk

Monday-Friday  
Telephone/Online: 8am - 6pm  
Walk-In (N42) 9:15am - 5pm

Web: [IS&T Service Desk](#)  
Email: [computing-help@mit.edu](mailto:computing-help@mit.edu)  
Phone: 617.253.1101

[Download Software](#)

Search Hermes Answers

### Related Links

No current information

Information Services and Technology | 617.253.1101 | [istweb@mit.edu](mailto:istweb@mit.edu)  
Ask a [technology question](#) or send a [comment about this web page](#).

If you are using Windows, please see "SecureFX for Windows" on page 6.

Go to the following link and download Fetch for MAC (certificates required):

Download: <http://ist.mit.edu/services/software/fetch/53>

Here are instructions for installing Fetch:

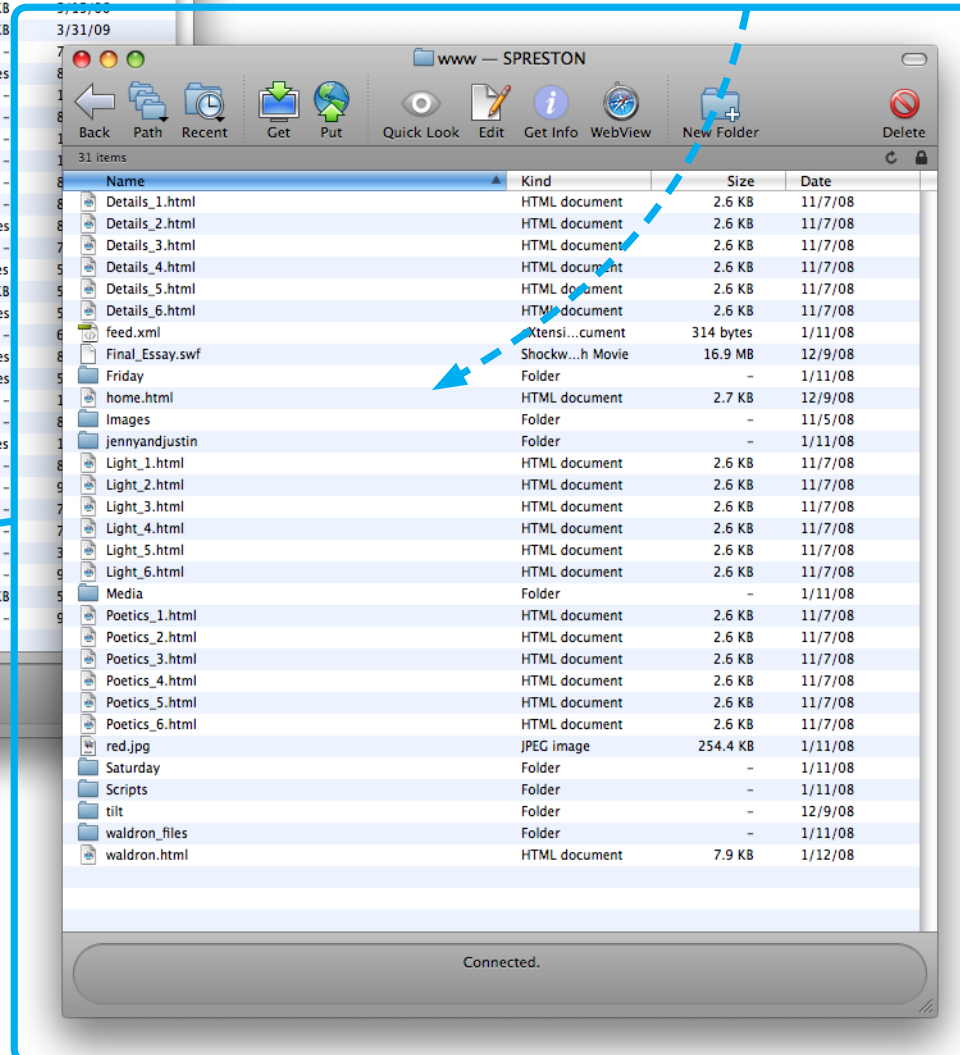
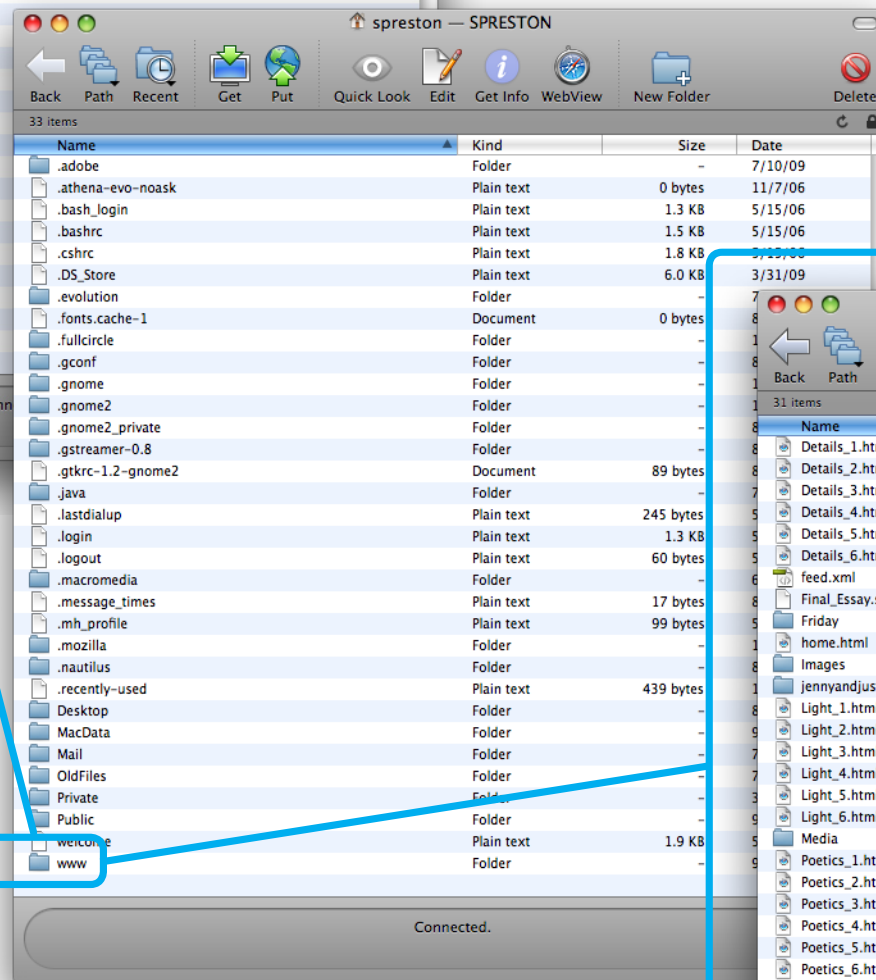
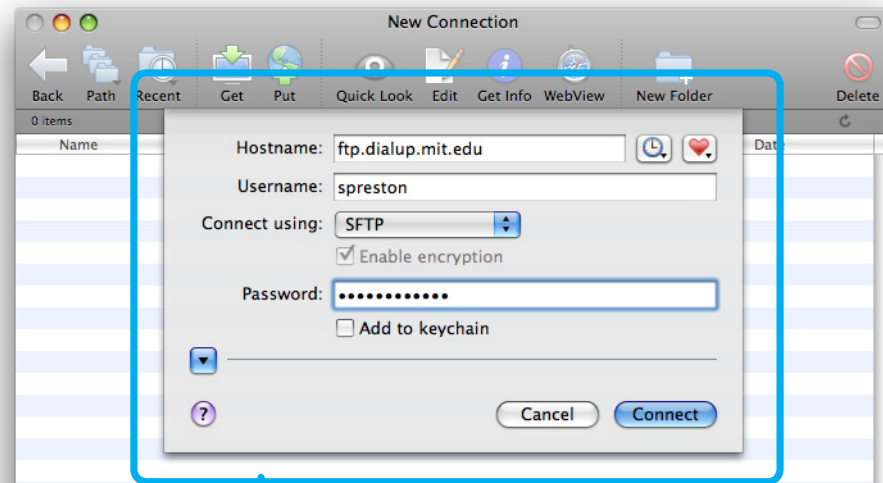
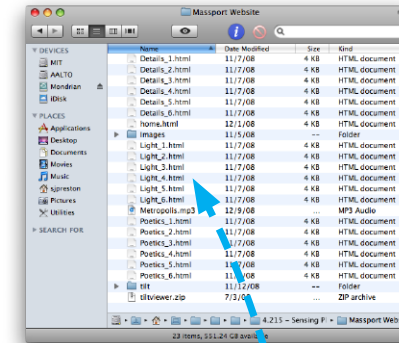
Installing: <https://ist.mit.edu/services/software/fetch/53/install>

NEXT PAGE: Using Fetch for MAC



# USING FETCH FOR MAC

Website files on your computer:



Open Fetch once you have downloaded and installed the program. Enter the following settings/information:

Hostname: ftp.dialup.mit.edu

Username: (your user name)

Connect using: SFTP

Password: (your password)

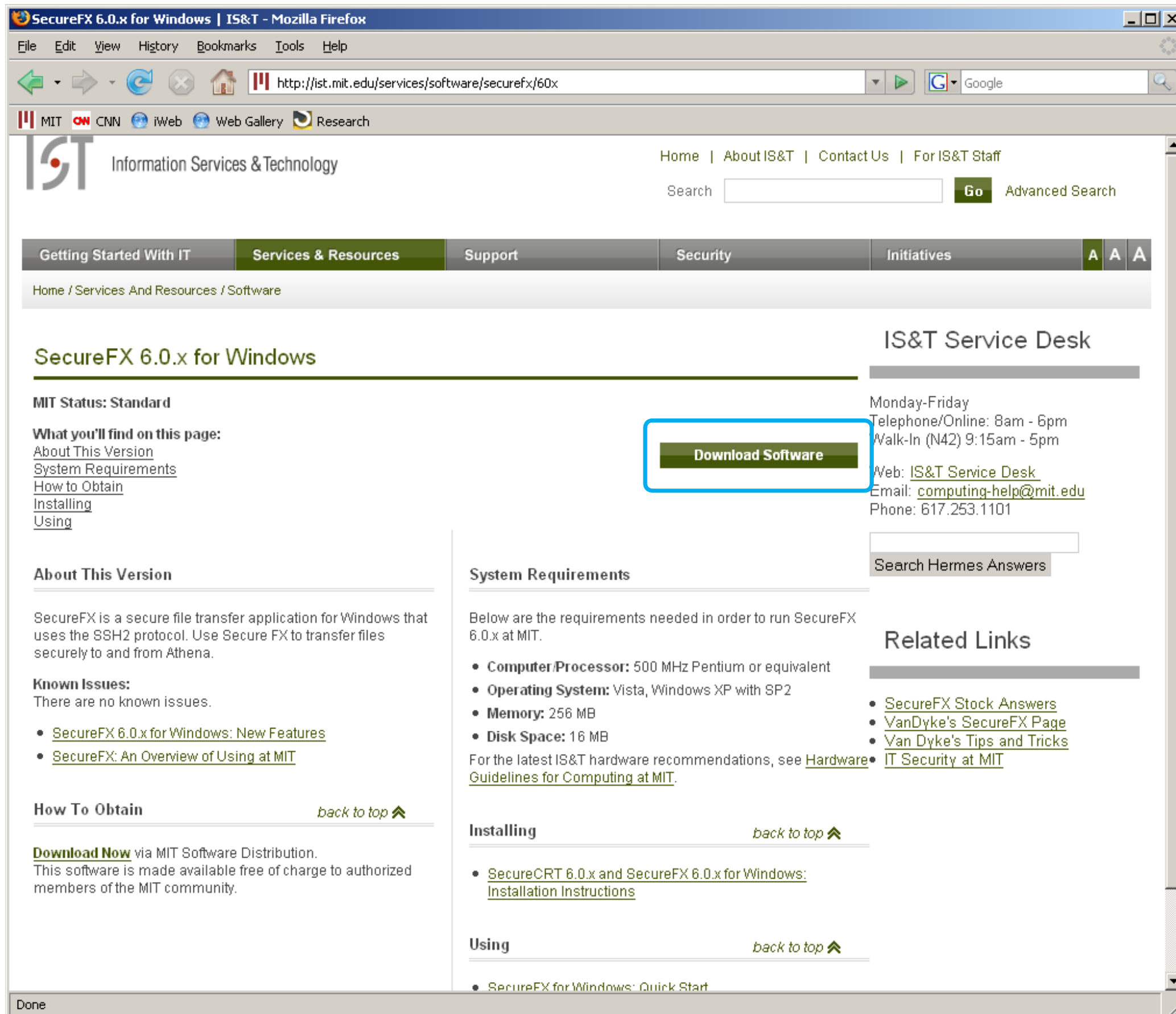
You can click on the little heart to "Make Shortcut..." and save these settings.

Next, click on the "www" folder of your account. This is where the files for your website will go.

To add/replace files, drag them from where they are on your computer to the Fetch window. To delete files, click on the file and then click on the "Delete" icon located in the menu bar. For additional information, see link below:

Using: <https://ist.mit.edu/services/software/fetch/5x/using>

NEXT: SecureFX for Windows



# SecureFX FOR WINDOWS

Go to the following link to download SecureFX for Windows (certificates required):

Download: <http://ist.mit.edu/services/software/securefx/60x>

Here are instructions for installing SecureFX:

Installing: <http://ist.mit.edu/services/software/securefx/31/quickstart-guide>

NEXT: Using SecureFX for Windows

# USING SecureFX FOR WINDOWS

Open SecureFX once you have downloaded and installed the program. Follow these steps to get started:

Select "Athena" and click "Connect"

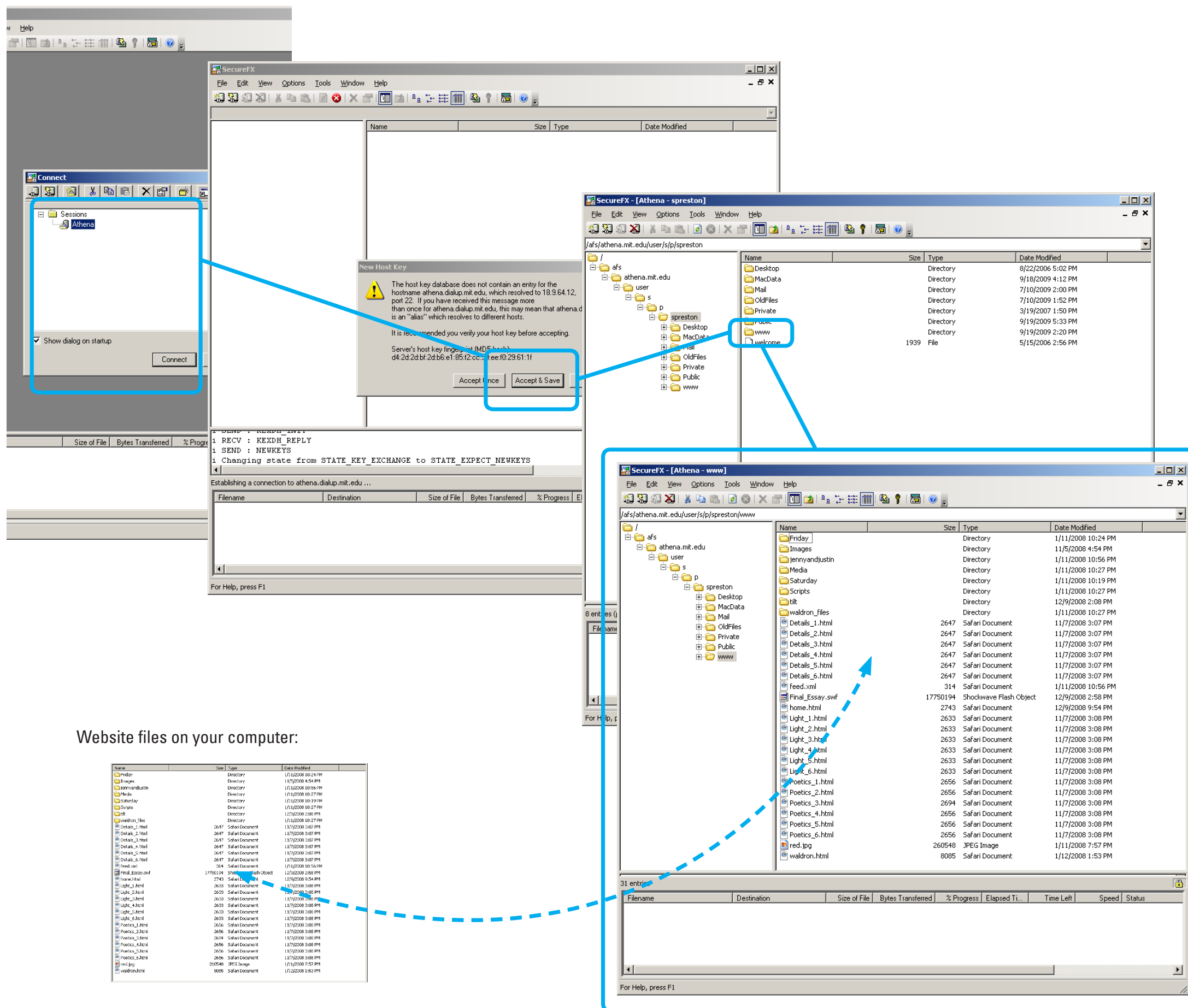
Click "Accept & Save"

Next, click on the "www" folder of your account. This is where the files for your website will go.

To add files, drag them from where they are on your computer to the SecureFX window. To delete files, click on the file and then click the "Delete" icon located in the menu bar. For additional information, see link below:

Using: <http://ist.mit.edu/services/software/securefx/31/quickstart-guide>

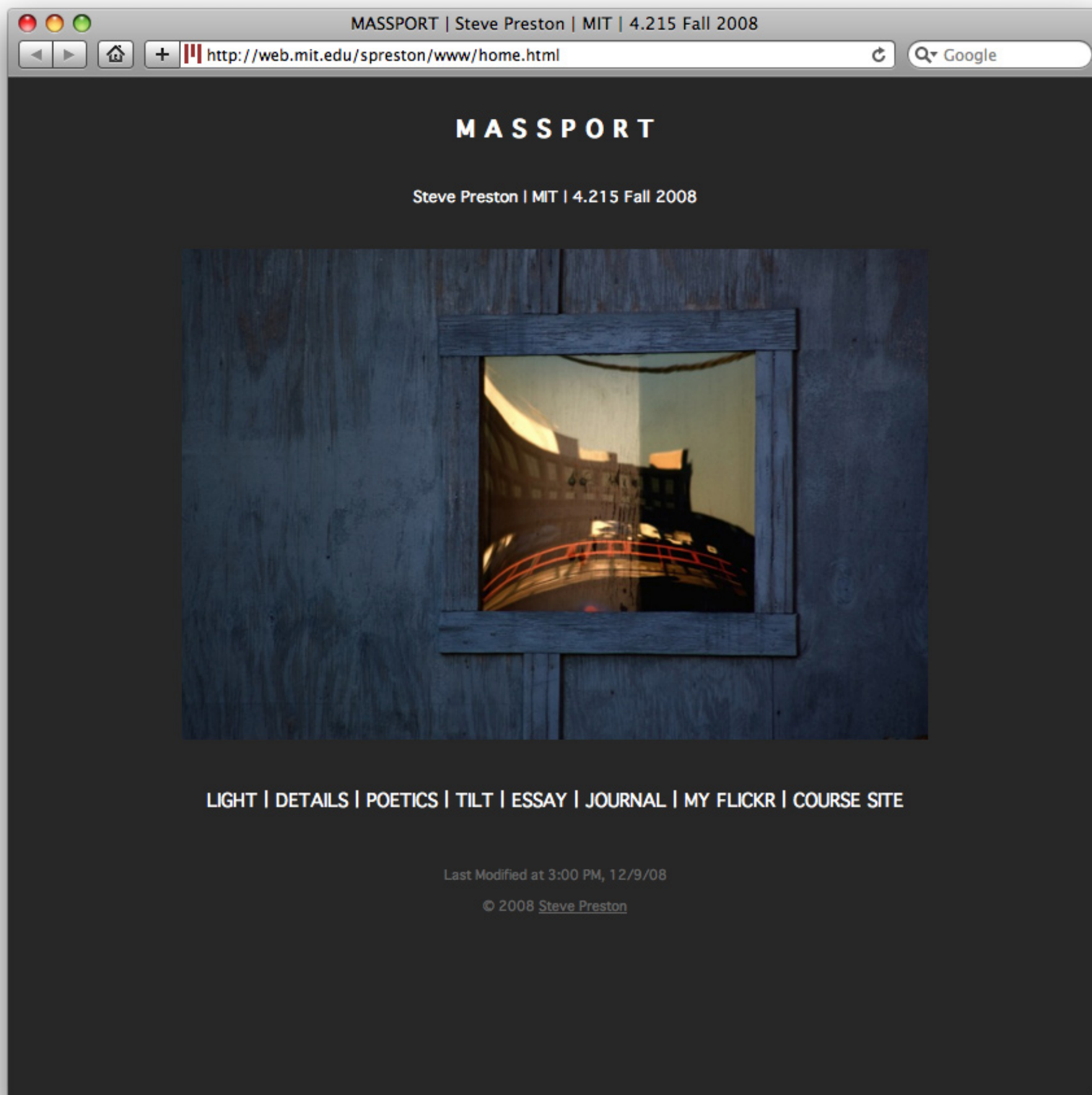
NEXT: General information



Website files on your computer:

Name	Size	Type	Date Modified
Friday		Directory	1/11/2008 10:24 PM
Images		Directory	11/5/2008 4:54 PM
jennyandjustin		Directory	1/11/2008 10:56 PM
Media		Directory	1/11/2008 10:27 PM
Saturday		Directory	1/11/2008 10:19 PM
Scripts		Directory	1/11/2008 10:27 PM
tlt		Directory	12/9/2008 2:08 PM
waldron_files		Directory	1/11/2008 10:27 PM
Details_1.html	2647	Safari Document	11/7/2008 3:07 PM
Details_2.html	2647	Safari Document	11/7/2008 3:07 PM
Details_3.html	2647	Safari Document	11/7/2008 3:07 PM
Details_4.html	2647	Safari Document	11/7/2008 3:07 PM
Details_5.html	2647	Safari Document	11/7/2008 3:07 PM
Details_6.html	2647	Safari Document	11/7/2008 3:07 PM
Feed.xml	314	Safari Document	1/11/2008 10:56 PM
Final_Essay.swf	17750194	Shockwave Flash Object	12/9/2008 2:58 PM
home.html	2743	Safari Document	12/9/2008 9:54 PM
Light_1.html	2633	Safari Document	11/7/2008 3:08 PM
Light_2.html	2633	Safari Document	11/7/2008 3:08 PM
Light_3.html	2633	Safari Document	11/7/2008 3:08 PM
Light_4.html	2633	Safari Document	11/7/2008 3:08 PM
Light_5.html	2633	Safari Document	11/7/2008 3:08 PM
Light_6.html	2633	Safari Document	11/7/2008 3:08 PM
Poetics_1.html	2656	Safari Document	11/7/2008 3:08 PM
Poetics_2.html	2656	Safari Document	11/7/2008 3:08 PM
Poetics_3.html	2694	Safari Document	11/7/2008 3:08 PM
Poetics_4.html	2656	Safari Document	11/7/2008 3:08 PM
Poetics_5.html	2656	Safari Document	11/7/2008 3:08 PM
Poetics_6.html	2656	Safari Document	11/7/2008 3:08 PM
red.jpg	260548	JPEG Image	1/11/2008 7:57 PM
waldron.html	8085	Safari Document	1/12/2008 1:53 PM





# GENERAL INFORMATION

In general, the directory for your files is as follows:

/afs/athena.mit.edu/user/(first letter of your user name)/(second letter of your user name)/(your user name)

For example, my directory is:

/afs/athena.mit.edu/user/s/p/spreson

It is good practice when learning how create and manage a website to maintain the files on your personal computer, and upload/update them to your webspace as needed. Thus, you will be able to preview changes and have a "working copy" (and backup) before you upload/update your work.

You should now have the basic skills to upload your website files to your personal webspace. Don't hesitate to contact me when you have questions or need help.