

SUBCLUE 1:

	G	B	G								
	B	G	W								
	G	G	G								
R	R	R	W	Y	W	O	R	O	Y	Y	Y
O	R	O	G	W	Y	O	O	O	W	Y	B
R	R	R	W	W	W	O	R	O	Y	W	Y
	B	B	B								
	G	B	Y								
	B	G	B								

- 5 = south
- 6 = up
- 7 = along main corridor
- 8 = down
- 9 = towards Kresge
- 10 = towards building 9

1

SUBCLUE 2: 17 25 53, 54 55, 56 63 71, 75 80 99

2

SUBCLUE 3: This is a normal Playfair cipher.

GD EQ ON HV XG RA WA QC AK TF GR UP AY YQ OK JS KC KY CD BK FU AK TR AD HZ SD
 XG BO WA QC AD RL OR SM CR PE EC BK KZ IG ZU CF EG DA AG AN VO KR BU SC EP ON
 GT HZ GB VO KR ST RO IB NR ER JT CQ AO CG WA ML RO EM SD OK BG PA HV RD DA KR
 SA ZX NJ TV KE NJ ST XA NO AC PE HO DG RD BA NV.

3

SUBCLUE 4: Three words are anagrammed as - cddeefiilnnoooprrstuuvy

4

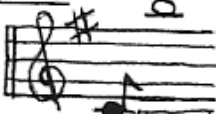
SUBCLUE 5: Yale's number for

5

SUBCLUE 6: The correct answer is suggested by the IAU designation for a 1979 nova-like object in Vul.

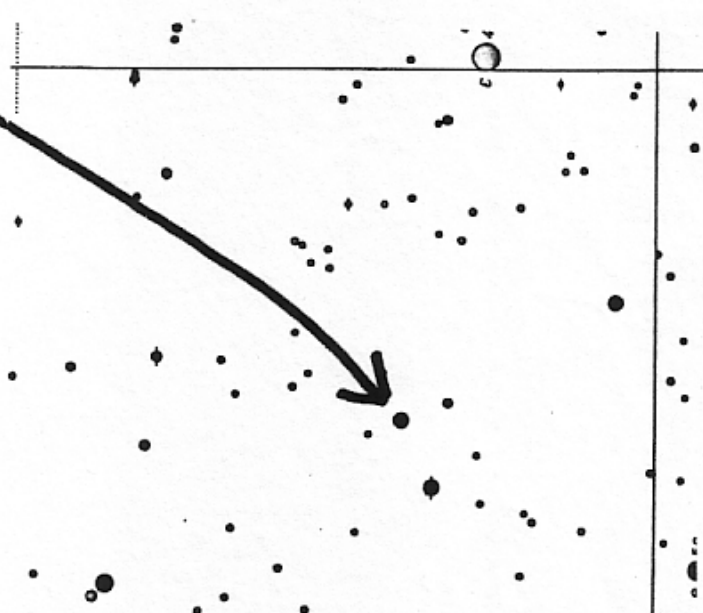
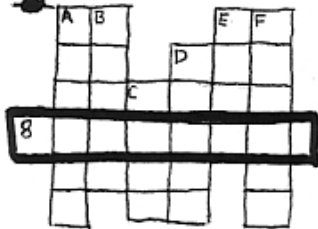
6

SUBCLUE 7:



7

SUBCLUE 8:



- A--Small-time weapon is something quite insignificant.
- B--Country bumpkin has 50 in foreign currency.
- C--Travelled a short distance east.
- D--A married man makes a stable worker.
- E--Grizzly with beard trimmed.
- F--Brigade's leader survives explosions.

SUBCLUE 9: Old name is Borbetomagus.

9

SUBCLUE 10: One of the activities listed in the IAP Guide is a fake. It nominally meets on either the 24 or 25 of Jan. Receive a vital clue at its erstwhile meeting.