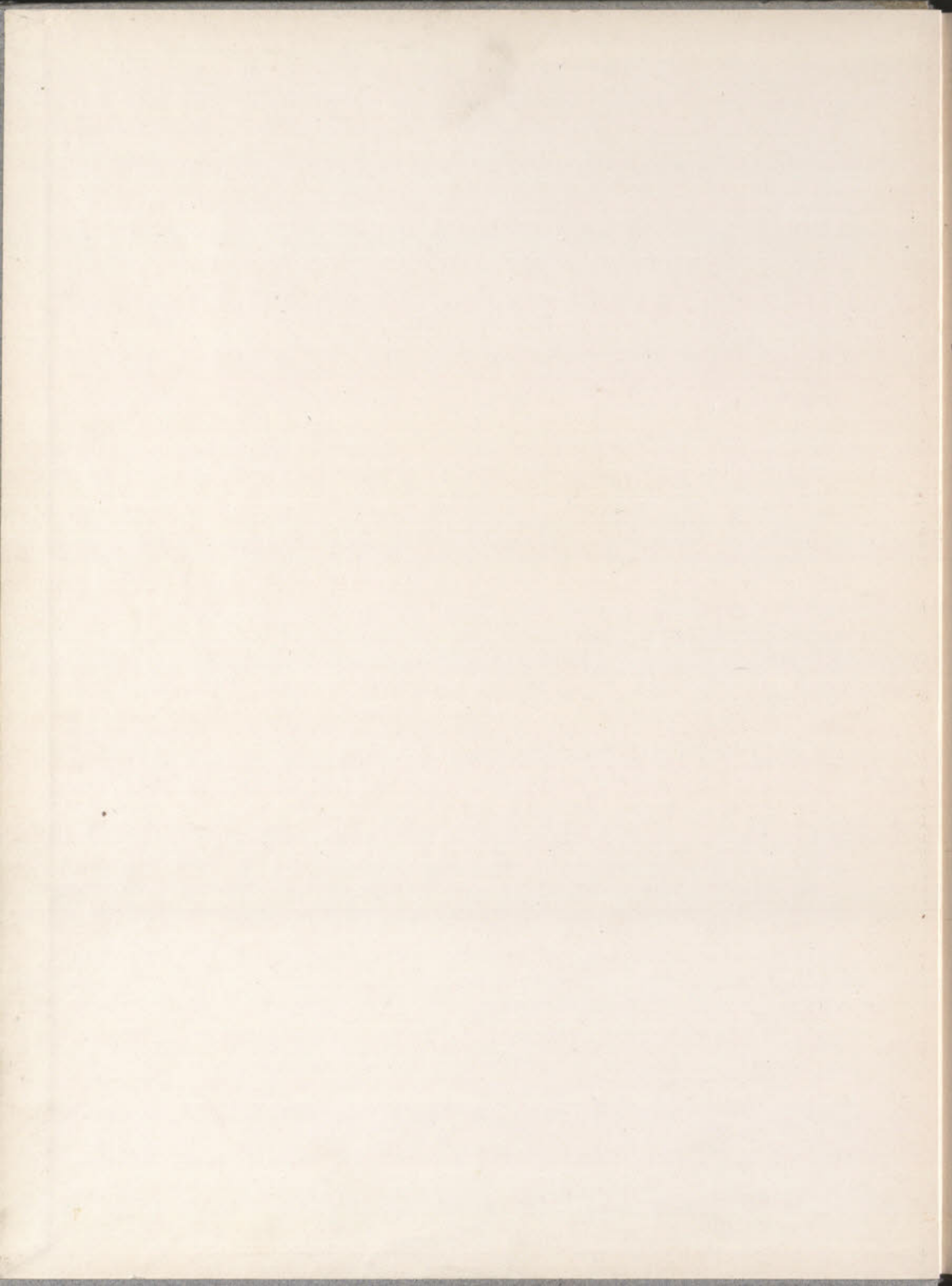
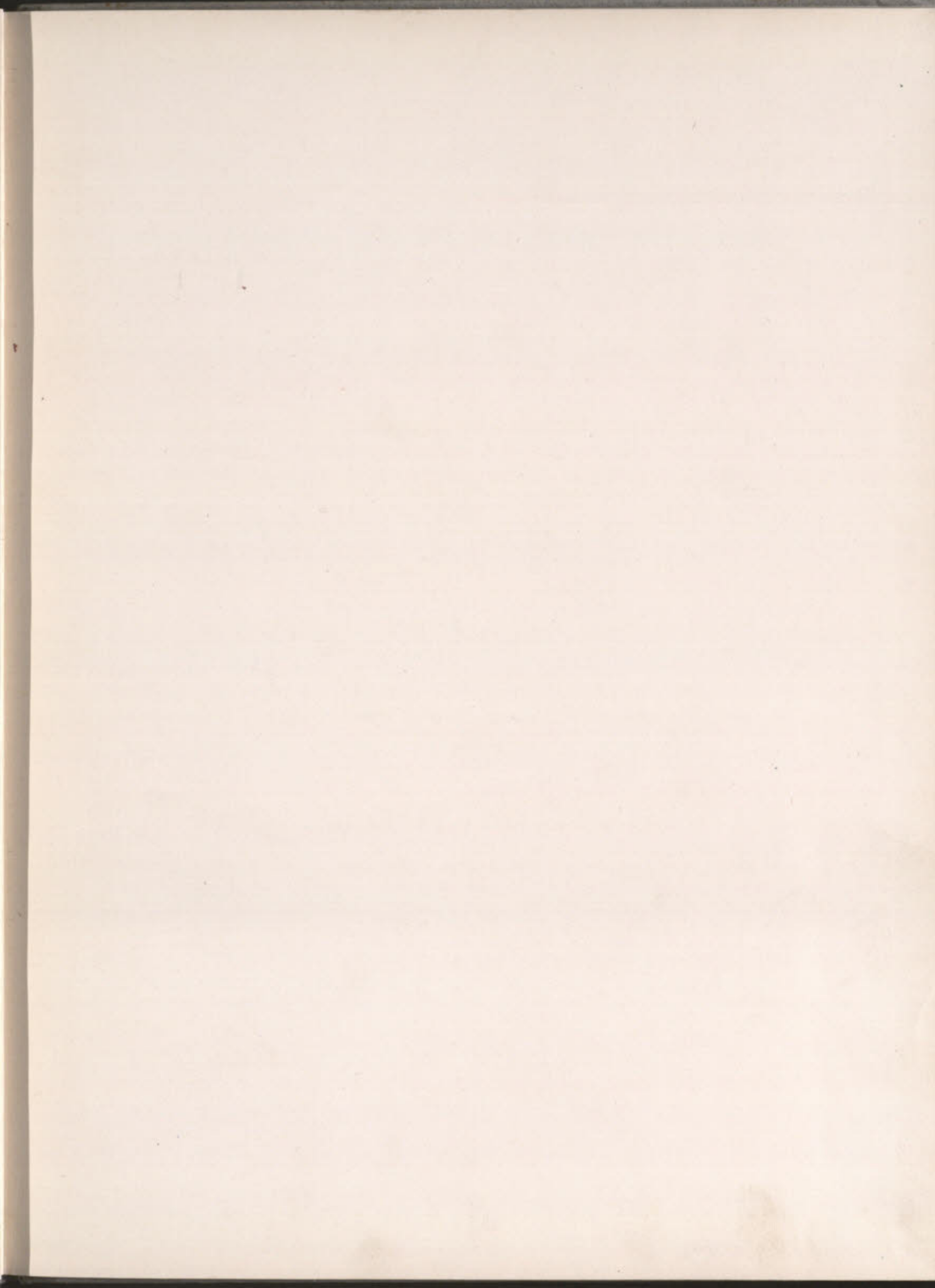
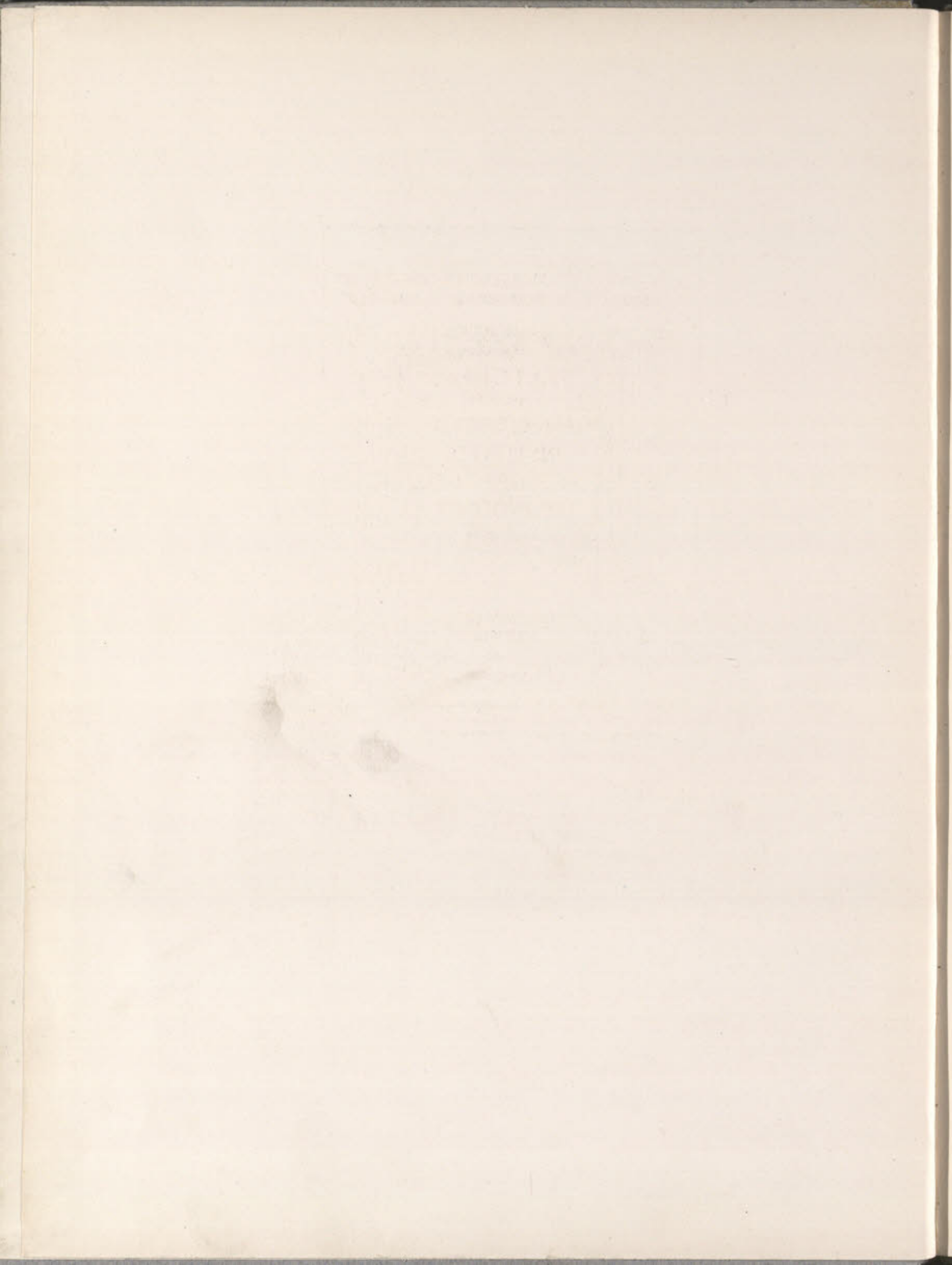
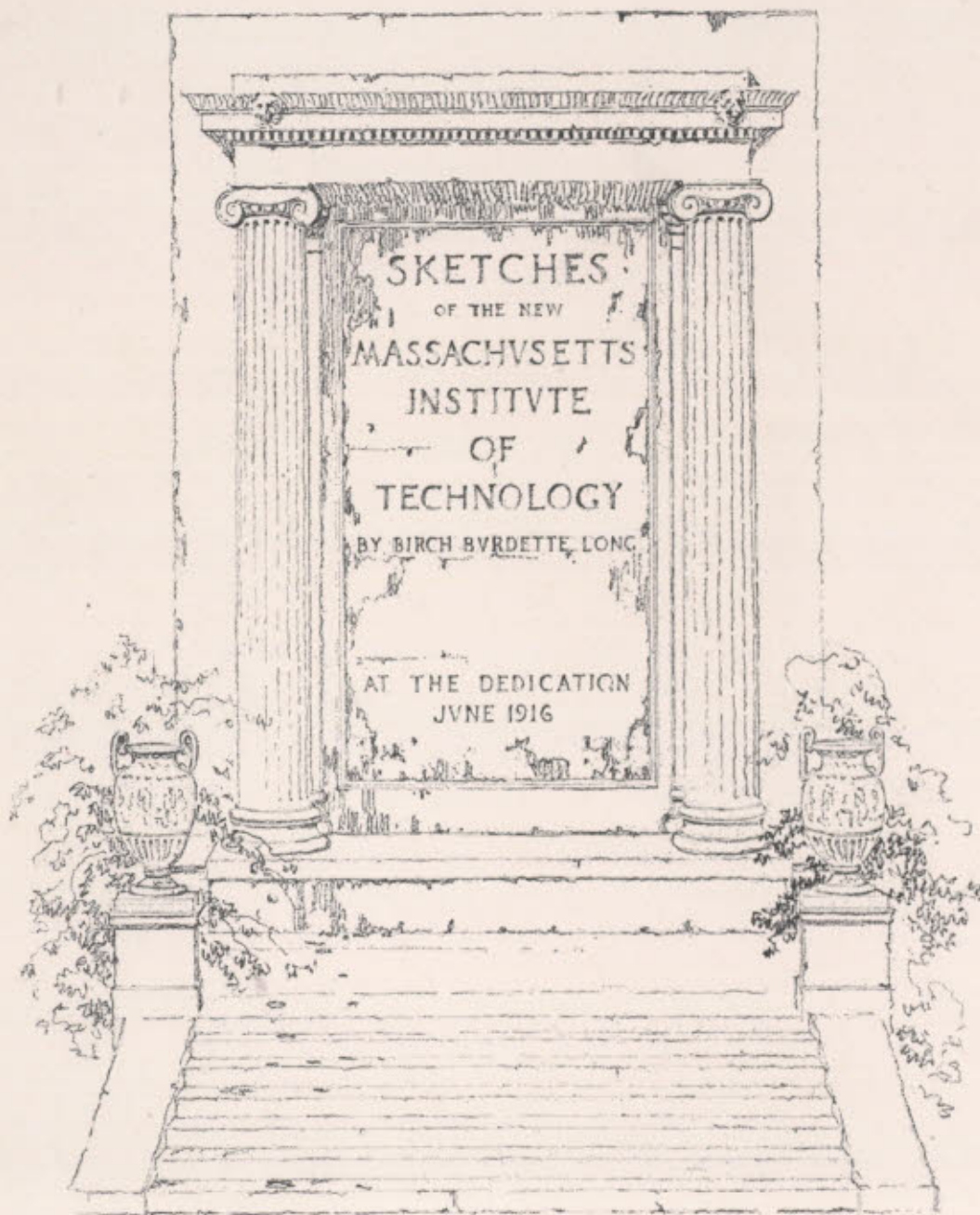


MASSACHUSETTS INSTI
TUTE OF TECHNOLOGY









SKETCHES
OF THE NEW
MASSACHUSETTS
INSTITUTE
OF
TECHNOLOGY

BY BIRCH BURDETTE LONG

AT THE DEDICATION
JUNE 1916

PUBLISHED BY
THE ALUMNI ASSOCIATION

THE UNIVERSITY PRESS
CAMBRIDGE

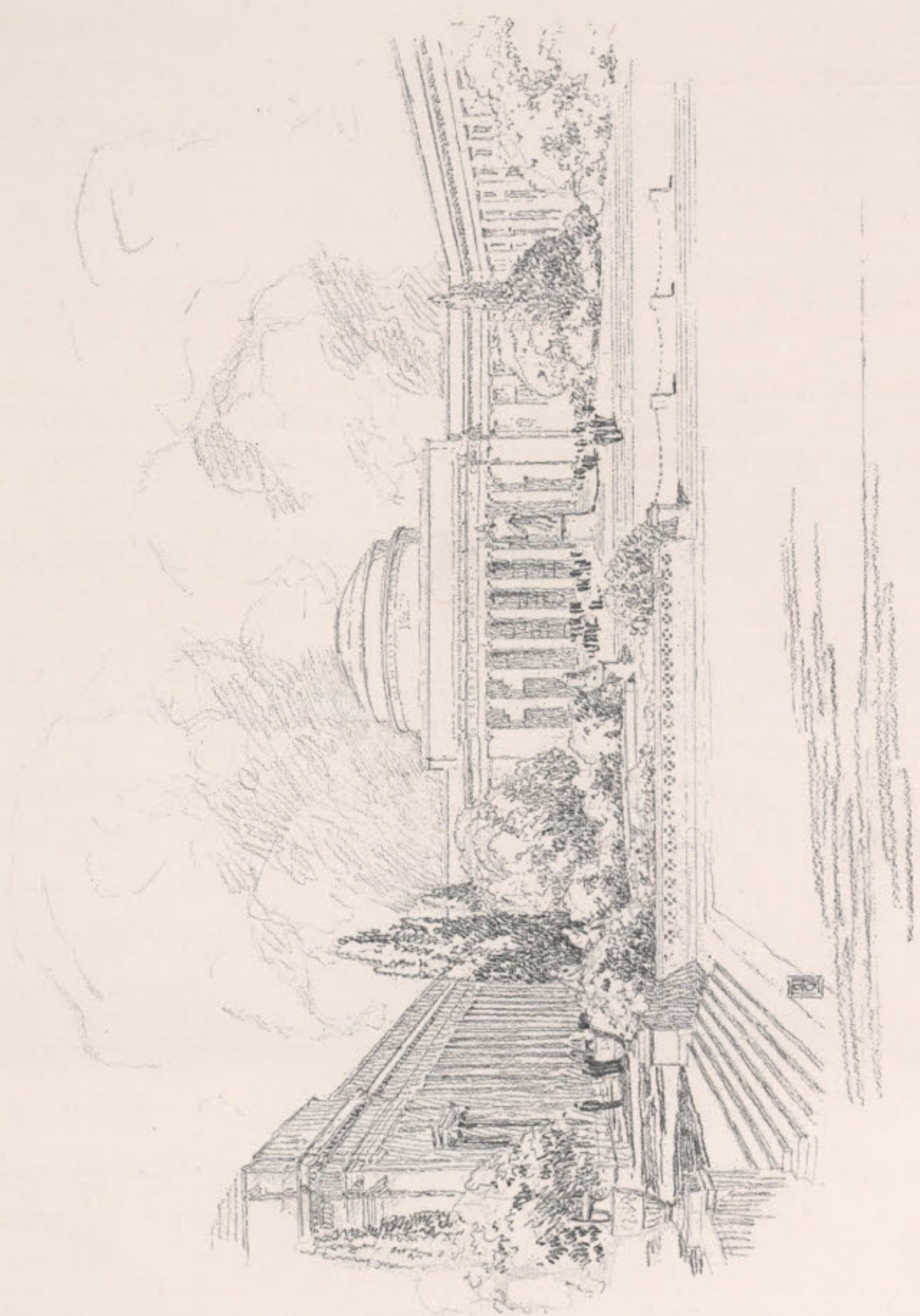
The Massachusetts Institute of Technology aims always to give its students the will and the power to serve society by the scientific method and in the scientific spirit. In its new home it will doubtless continue to pay more regard to the inward spirit than to the outward form, but the form must affect the spirit and help the Institute to train men liberally to be leaders in engineering, architecture and science.

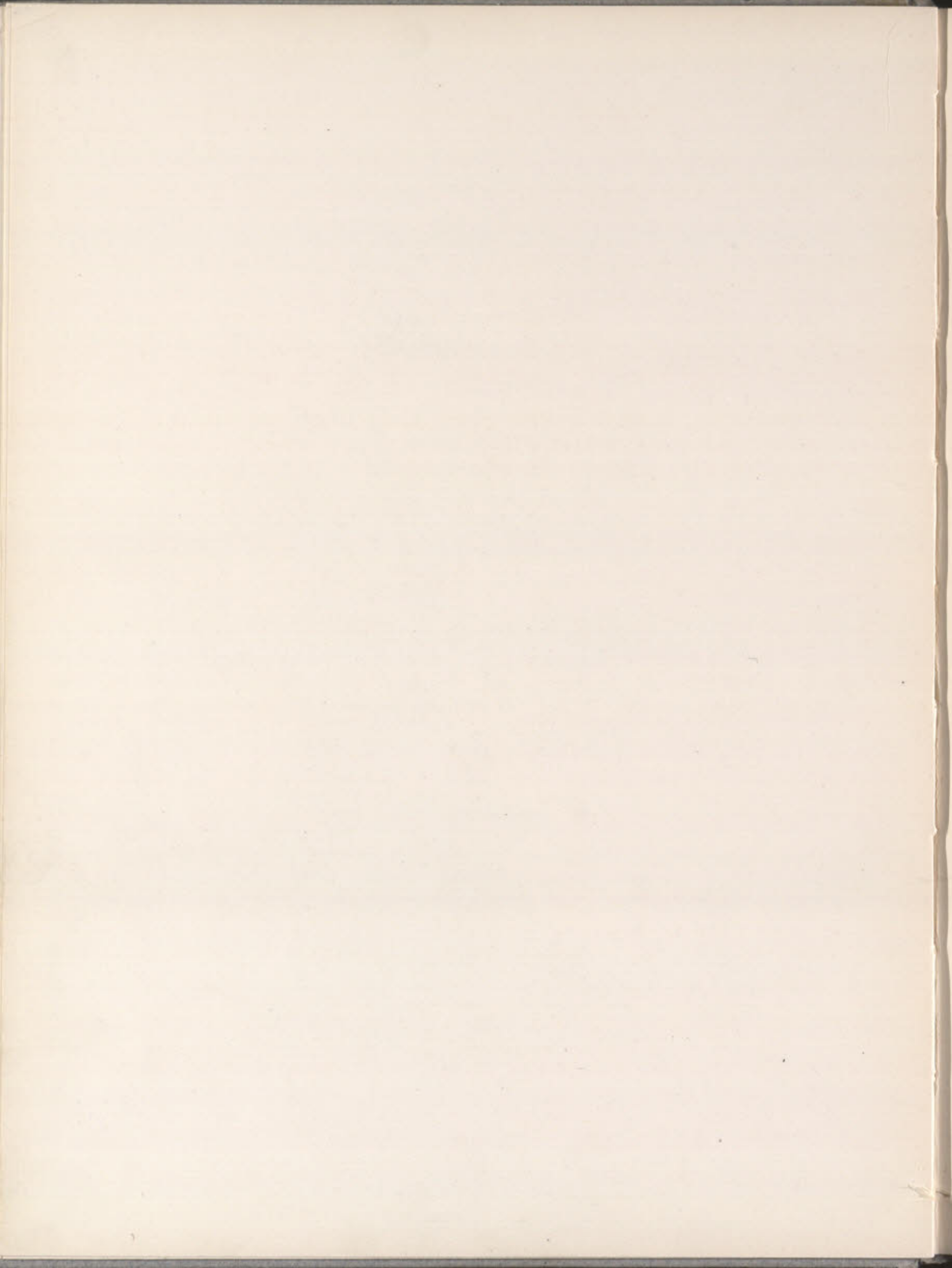
Richard C. Maclaurin

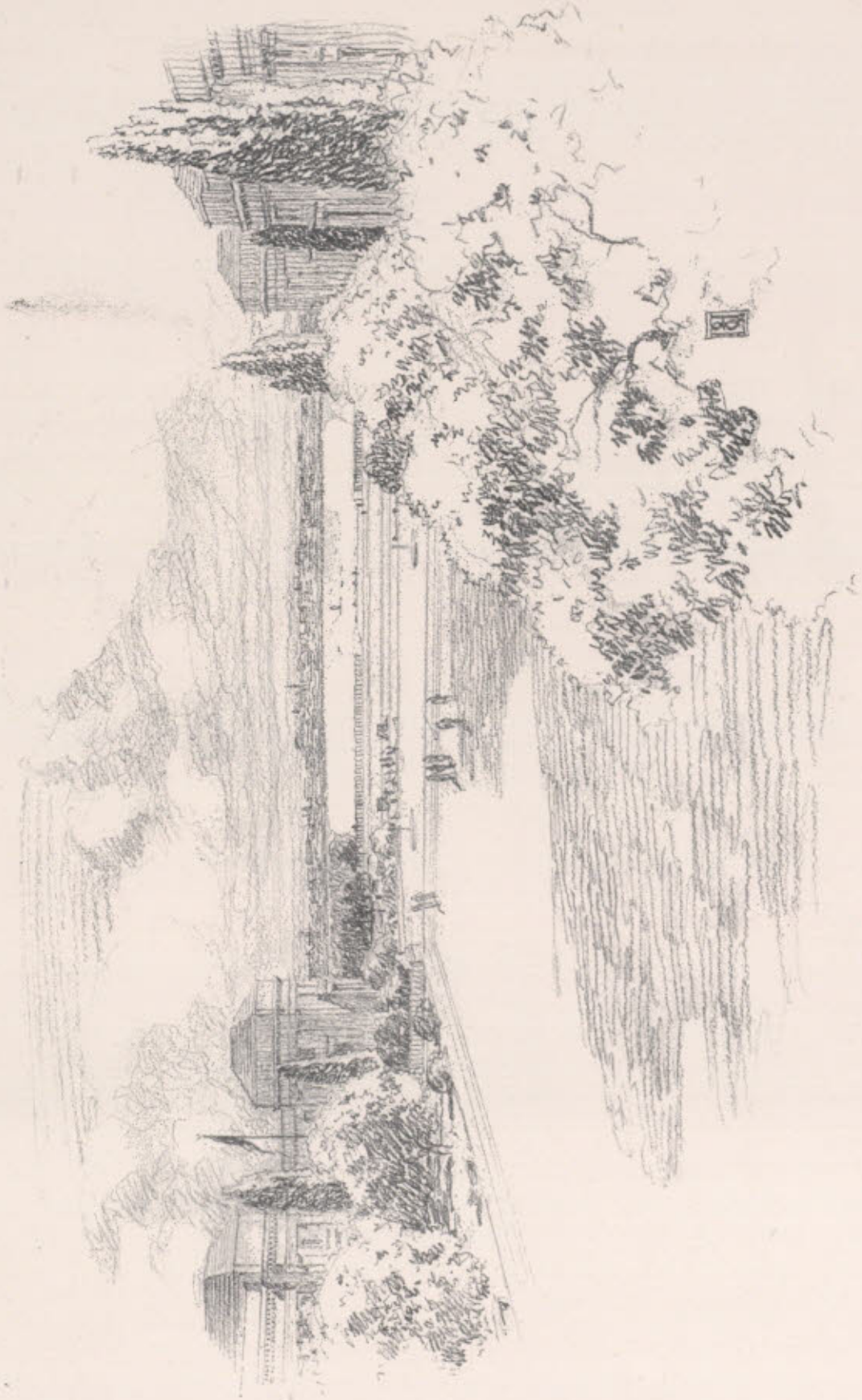
June 14, 1916

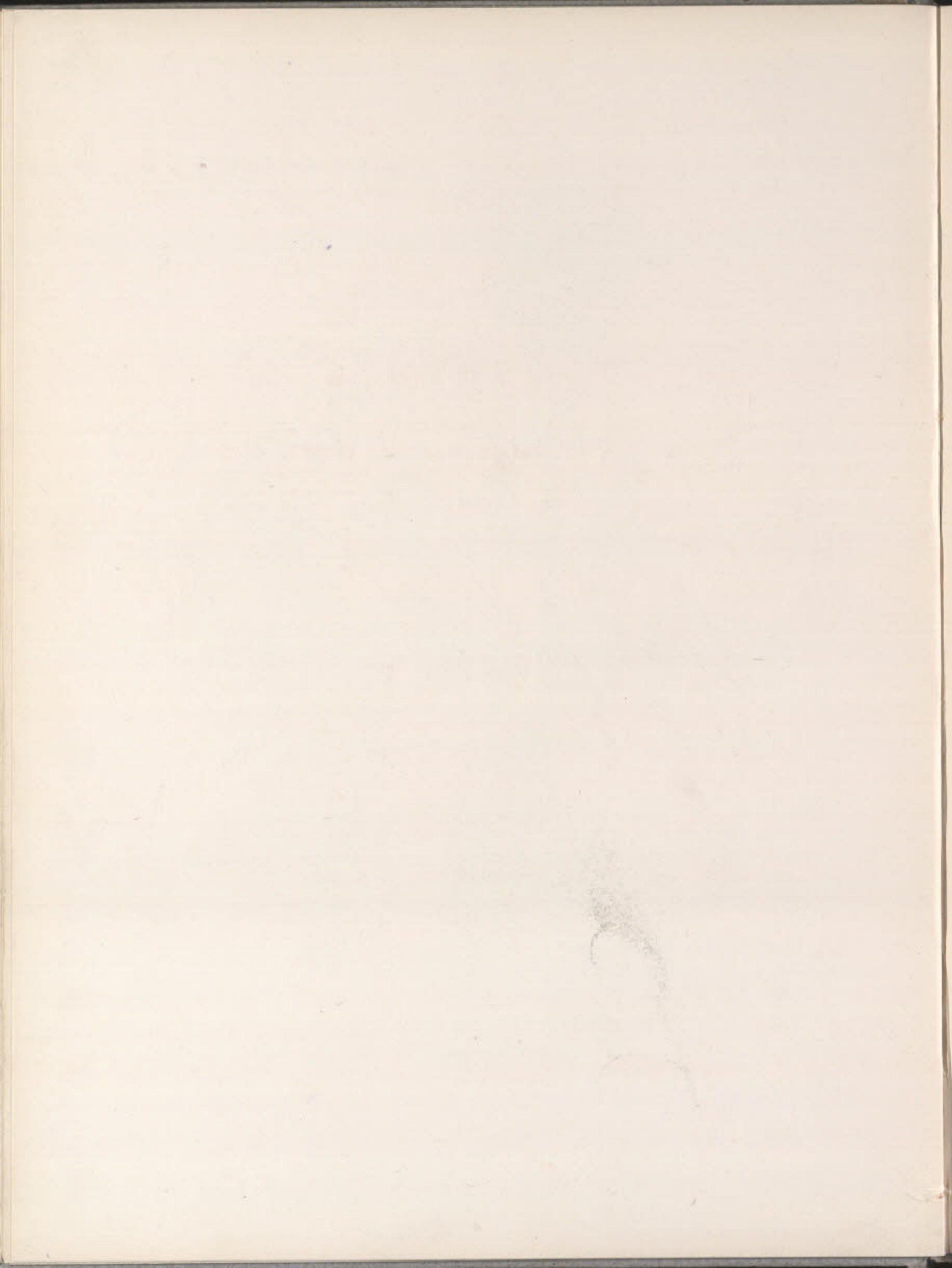
· DRAWINGS ·

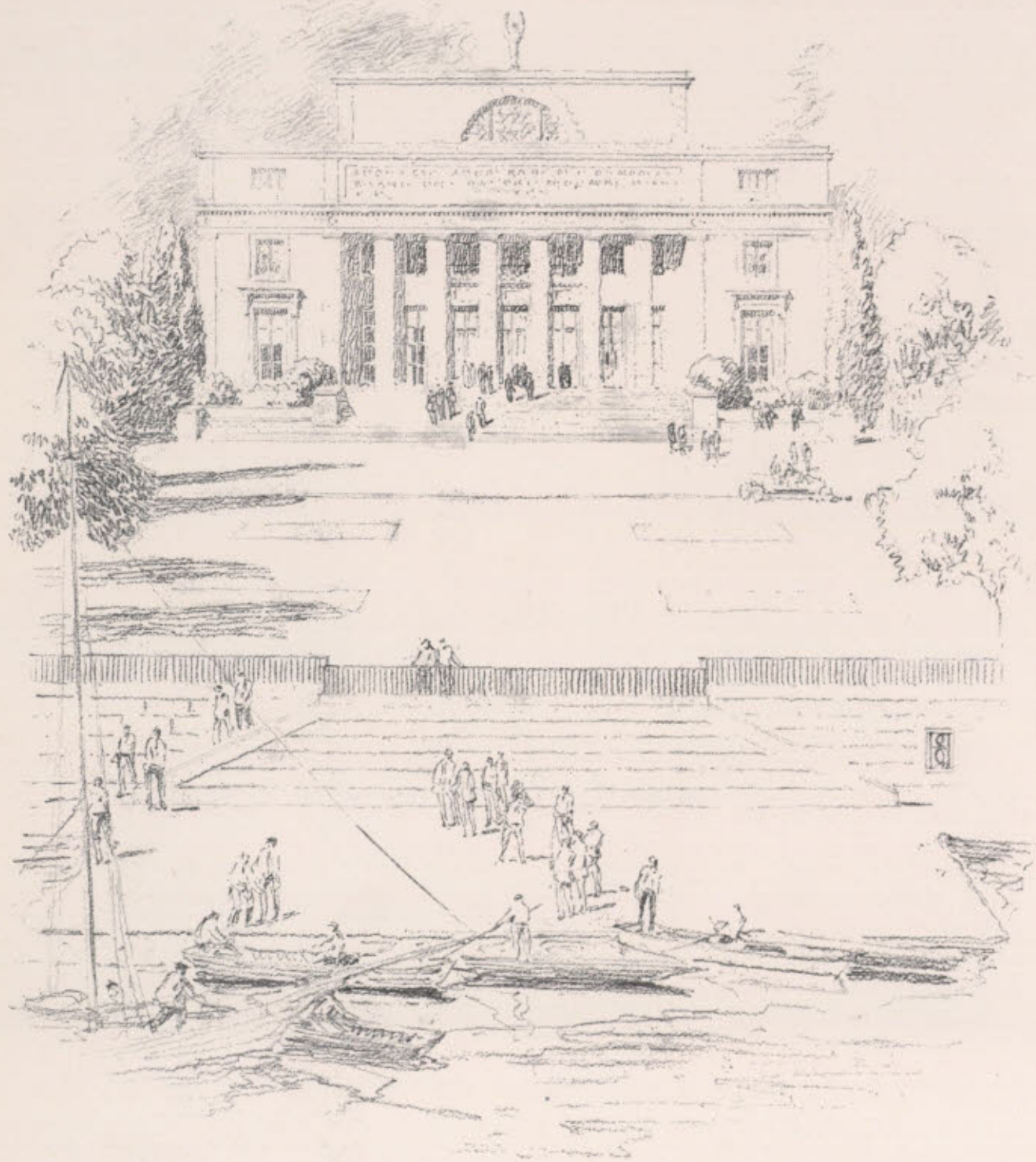
- 1 MAJOR · COVRT · FROM · ESPLANADE ·
- 2 BOSTON · SHORE · FROM · PRES. · OFFICE ·
- 3 WALKER · MEMORIAL · CLUBHOUSE ·
- 4 MINOR · COVRT · FROM · OPPOSITE · COVRT ·
- 5 ENTRANCE · TO · DORMITORY · TOWER ·
- 6 COLONNADE · OF · MAIN · PORTICO ·
- 7 GLIMPSE · THROUGH · PORTICO · COLUMNS ·
- 8 PRESIDENT'S · HOUSE · FROM · GARDEN ·
- 9 EAST · PAVILION · ON · ESPLANADE ·
- 10 BUILDINGS · FRONTING · THE · RIVER ·
- 11 FOUNTAIN · IN · INTERMEDIATE · TERRACE ·
- 12 THE · DOME · FROM · EAST · PAVILION · WINDOW ·
- 13 ELEVATION · IN · MINOR · COVRT ·
- 14 COLONNADE · AND · DOME · OF ·
ADMINISTRATION · BUILDING ·

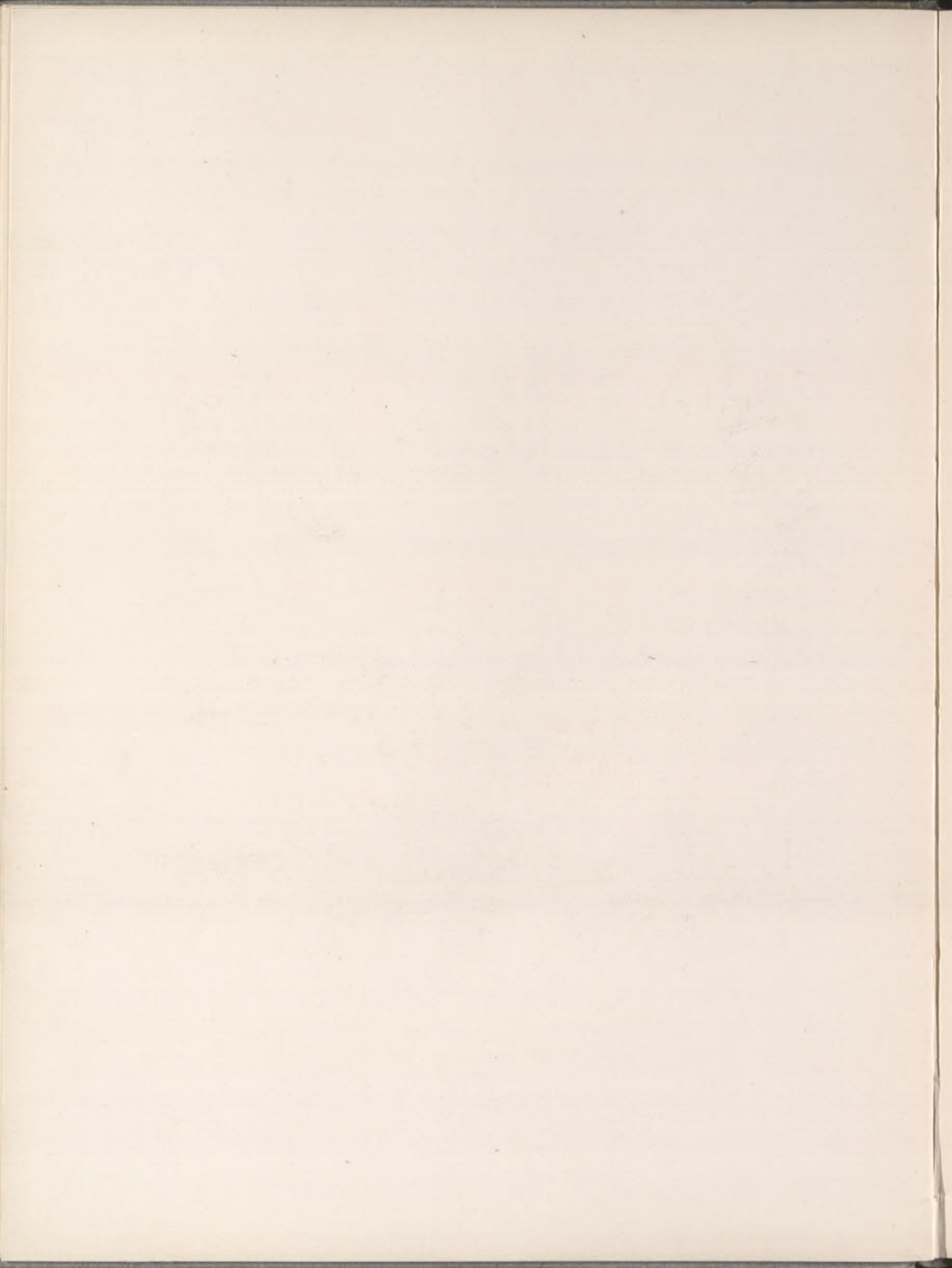


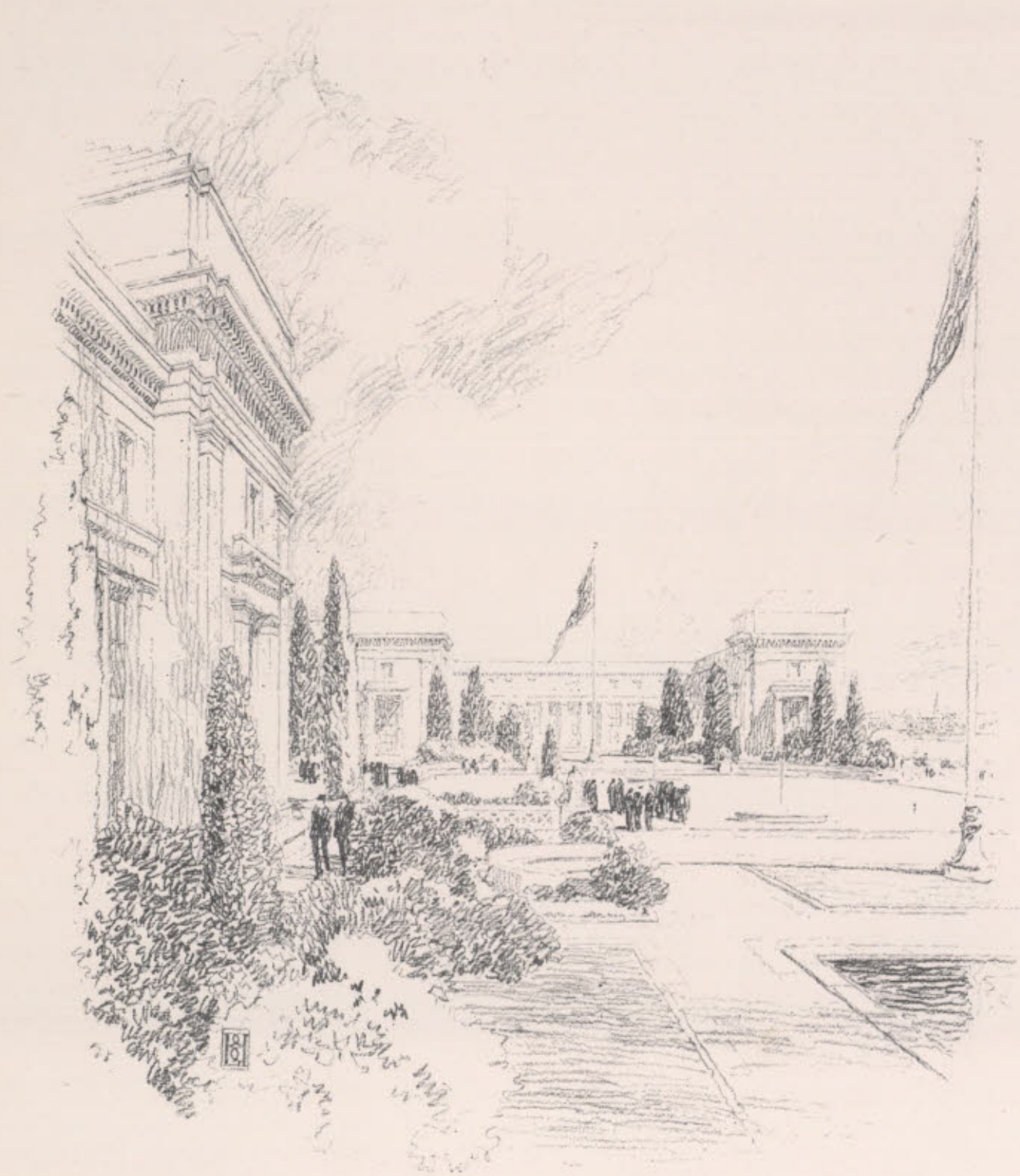


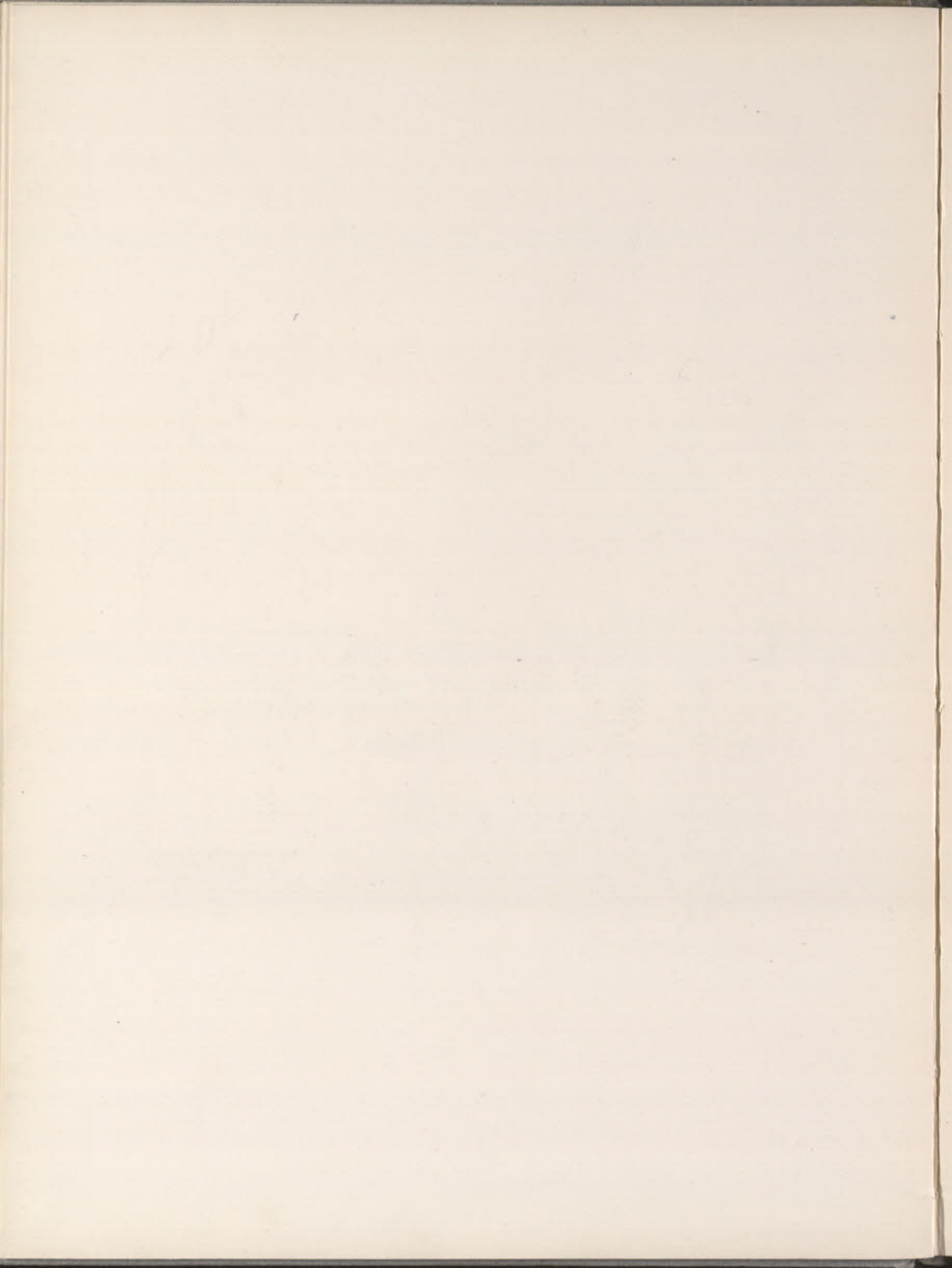




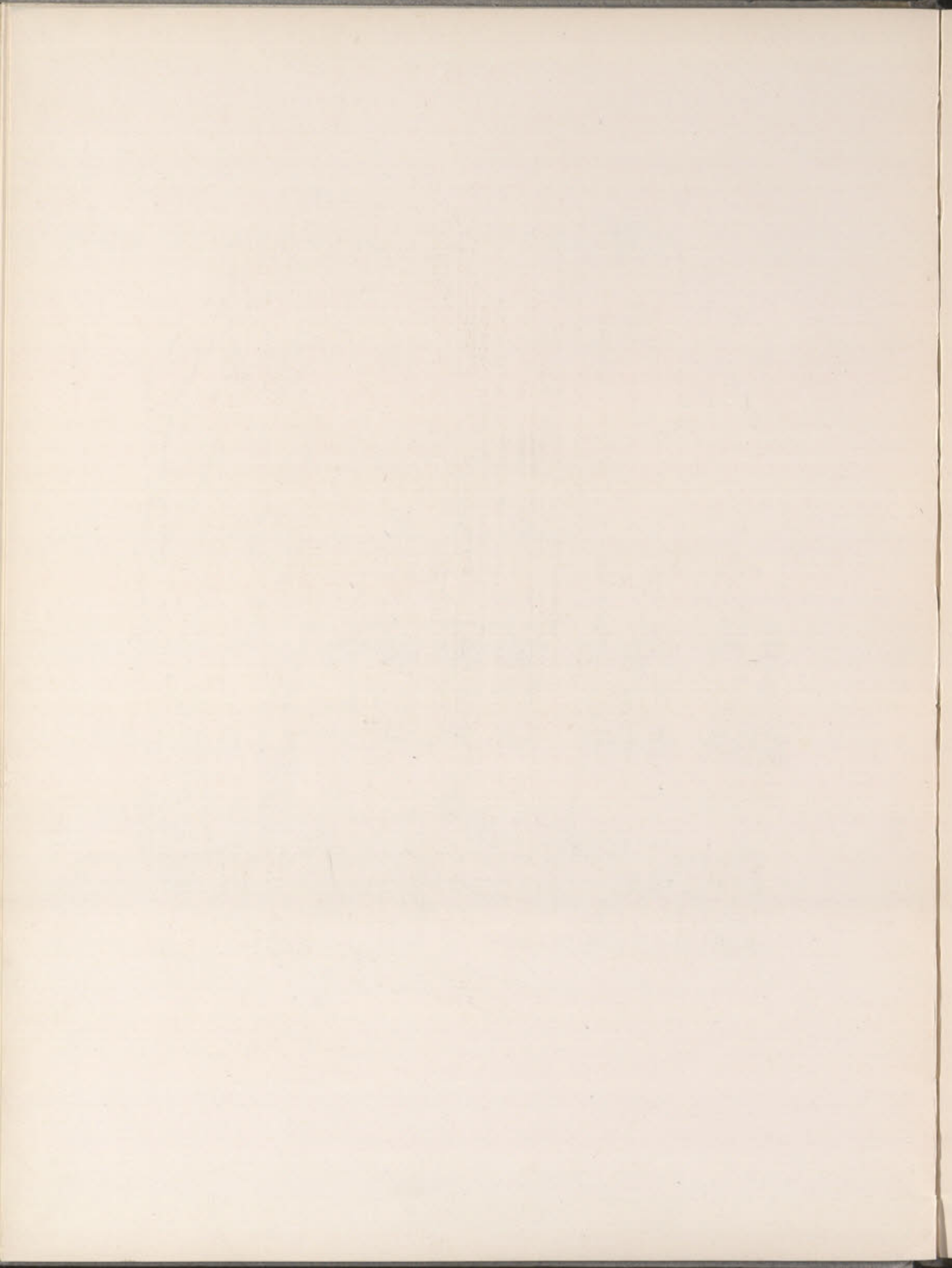


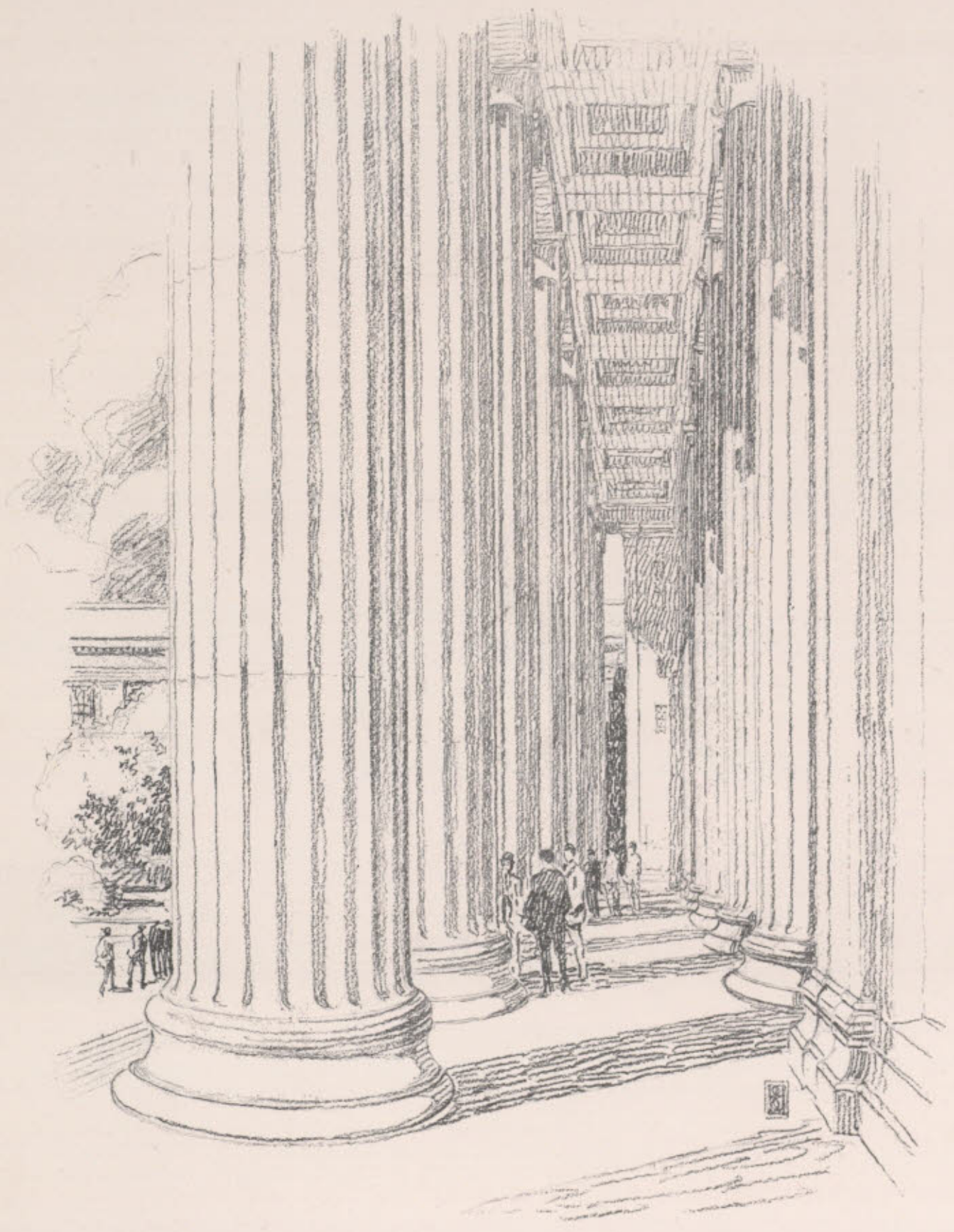


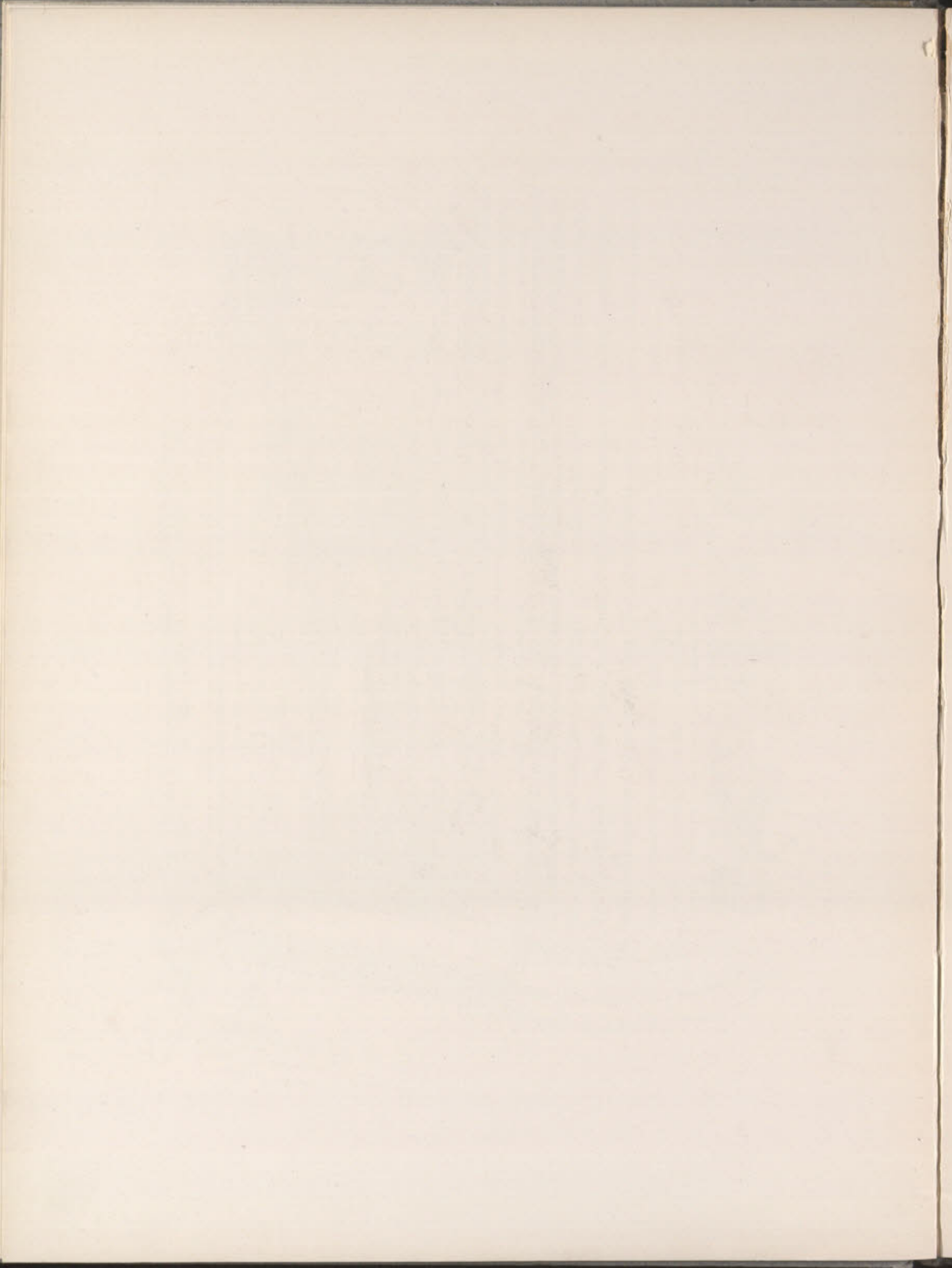














R

