

# In League...

MIT  
WOMEN'S  
LEAGUE

A quarterly newsletter

November 2011 – January 2012

## Visit and Tour — Boston's Symphony Hall

**Thursday, November 10 • 2:00 pm**

Please join us for our visit to and tour of Boston's Symphony Hall. This beautiful concert hall was designed by McKim, Mead and White for the Boston Symphony Orchestra and was dedicated on October 15, 1900. In 1999 it was designated a U.S. National Historic Landmark. At that time it was noted that "Symphony Hall remains, acoustically, among the top three concert halls in the world and is considered the finest in the United States." (NPS) It is also home to the Boston Pops Orchestra as well as the Handel and Haydn Society.

Our one-hour tour will be lead by a member of the Boston Symphony Association of Volunteers. Included will be a behind-the-scenes look at Symphony Hall which will also provide us with an historical perspective of the Hall, the Boston Symphony Orchestra and the Boston Pops.

Symphony Hall, at 301 Massachusetts Avenue, Boston can be reached:

- by T, take the Green Line – E train/Heath Street (must have a Charlie card)
- by bus, take the # 1 bus which stops right across the street from the main entrance to MIT at 77 Massachusetts Avenue (must have a Charlie card).
- by car or on foot, meet us at Symphony Hall at the Mass. Ave entrance at 1:50 pm.

Our tour begins at 2:00 pm. For those not familiar with Boston or our local public transportation, a group will meet at 1:10 pm in Lobby 7 ready to travel together on Bus #1.

To reserve your place, please send a check for \$7.00 made payable to the MIT Women's League (note: Symphony Hall Tour) and mail or bring it to the League office: Room 10-342, 77 Massachusetts Avenue, Cambridge, MA 02139 by Thursday, November 3.



## Breakfast Series with Tanja Bosak

**Wednesday, November 2 • 8:00 am  
Emma Rogers Room (10-340)**

The Women's League is planning its Fall Breakfast Series program for women in the MIT community. These popular, twice-yearly "breakfast talks" are informal, early morning get-togethers that explore the role of women in the academy. Guest speakers are drawn from the academic and administrative sides of the Institute to share personal accounts of their professional accomplishments.

Our guest speaker Dr. Tanja Bosak is the Cecil and Ida Green Assistant Professor of Geobiology at MIT. She directs the MIT Laboratory for Geomicrobiology and Microbial Sedimentology that investi-

gates the parallel evolution of life and the environment on early Earth. Her interest in fossil microbes has led to fascinating discoveries from the time when our planet emerged from a global glaciation, or "Snowball Earth," event, a time when the first organisms emerged and evolved hardy survival skills, with tough exteriors to weather the frozen climate. The findings of this period point to a rich source of information about the kinds of life able to persist between the glacial periods.

A graduate of California Institute of Technology, Dr. Bosak received the prestigious Subaru Outstanding Woman in Science Award in 2007 from the Geological Society of America, awarded to women who have made a significant impact on the geosciences with their Ph.D. Research.

Her talk will touch on what led her to MIT, the importance of her mentors, and the influences that helped to steer her towards her current path of academic exploration.

Breakfast seating is limited. Tickets are available on a "first-come, first-served, basis" at a cost of \$12.00 and can be purchased from Sis de Bordenave in the League office, 10-342. Breakfast is served promptly at 8:00 am.



## Annual Catherine N. Stratton Lecture on Critical Issues **From Barrio to Boardroom:** **Commercial Finance for the Poor**

**Tuesday, November 29, 4–6 pm**  
**Wong Auditorium, Tang Center**  
**70 Memorial Drive**

### **Free and Open to the Public**

Why, in the twenty-first century and for the first time in history, has commercial finance for the poor become a critical issue on the global scale?

The recent and rapid spread of formal financial services to low income people in many parts of the world represents an early stage of what is likely to become large scale financial inclusion for these peoples in the coming decades. Powerful tools include knowledge of their lives and financial needs; an understanding of how regulators must create viable environments for commercial microfinance and of how institutions can provide them with financial services profitably; and innovation and development of technologies that improve and expand financial services while they reduce costs.

Just as critical are vision, leadership, strategic planning, management, and commitment. These are among many learning experiences and achievements of the past few decades. They and others will be needed because there are entrenched obstacles along the way.

Three distinguished panelists will address the recent and rapid development of commercial "microfinance" and reasons to expect significant progress toward global financial inclusion for the poor in coming decades.

**Robert Peck Christen** is president of the Boulder Institute of Microfinance and former director of Financial Services for the Poor at the Bill and Melinda Gates Foundation. From 1998 to 2004, he was senior advisor to the Consultative Group to Assist the Poorest (CGAP) at the World Bank. He is also the founder of the Microfinance Information Exchange (MIX).

**Michael Chu** is senior lecturer at the Harvard Business School, where he co-chairs the Executive Education Program, "Strategic Leadership for Microfinance." He is also managing director and co-founder of the IGNIA Fund, a venture capital fund in Mexico that focuses on commercial enterprises at the base of the financial pyramid.

**Marguerite S. Robinson** advises governments, banks, and donors on commercial microfinance and related policy and development issues. She is an advisor to Kenya's Equity Bank, and was for many years an advisor to the Indonesian Finance Minister for Bank Rakyat Indonesia's nationwide micro-banking system. She is the author of Volumes I and II of *The Microfinance Revolution*; a third volume is in progress.

*"From Barrio to Boardroom..." continues the Catherine N. Stratton Lectures on Critical Issues, which the MIT Women's League sponsors annually to honor Kay Stratton, a woman whose energy, grace, and intelligence have enriched the MIT community for more than sixty years. Kay is an active participant in the planning and execution of all of the Lectures.*



## **Holiday Wreath Making**

**Wednesday, November 30 • 9 – 11 am**  
**Mezzanine Lounge, W20-307**

During the years when Carl Taylor Compton and his wife Margaret lived at the President's House (1930–1949), the League began the tradition of making the three evergreen wreaths to hang above the doors at the 77 Massachusetts Avenue entrance to the Institute during the holiday season.

Continuing the League tradition today, Brenda Blais guides our group of volunteers through the process of making these wreaths on their large wooden frames. If you have never done something like this before, this is a wonderful opportunity to learn and a fragrant and delightful way to begin the holiday season.

Wreath makers, both experienced and new, are needed to help with the greenery design and assembly on Wednesday, November 30, from 9 am to 11 am in the Mezzanine Lounge on the 3rd floor in the Stratton Student Center (W20-307). Come and help for as long as your time permits.

Please contact Brenda Blais at [bmblais@mit.edu](mailto:bmblais@mit.edu) or 617.253.6852 to learn more and volunteer.







## Concord in December!

**Saturday, December 3**  
**10:30 am to 3:00 pm**

In keeping with our tradition of having a special holiday outing in December we are going to visit historic Concord for a day of learning, lunching and leisurely shopping.

On Saturday, December 3, we will visit the famous Concord Museum ([www.concordmuseum.org](http://www.concordmuseum.org)), which houses a collection of local artifacts including one of the lanterns hung in The Old North Church on April 18, 1775 as a signal to patriot Paul Revere; the original furnishings of Henry David Thoreau's hut at Walden Pond; and the furniture, books and other items from Ralph Waldo Emerson's nearby home. Also on display is a vast collection of handwork, artwork and historic memorabilia that tells the story of Concord from the 16th to the 19th century.

For this holiday season the Museum will have on exhibit a collection of holiday trees decorated to represent well known children's books that correspond to the period rooms that they occupy.

The cost for the Museum visit is \$15.00, payable at the door.

We will meet at the Museum which is located on Route 2A in Concord at 10:30 am. After a short introductory film and a guided tour that will last about an hour, we will go to the Colonial Inn ([www.concordcolonialinn.com](http://www.concordcolonialinn.com)) for lunch. This famous restaurant specializes in local New England fare such as New England Clam Chowder, Indian Pudding and Boston Cream Pie! View the web site for menu options.

After lunch we will have time to browse through Concord's many shops and galleries before heading home.

Carpools will be arranged for those wishing to travel from Alewife Station on the Red Line (meeting there at 10:00 am) to the Museum. Please register by Wednesday, November 30, by calling the League office at 617.253.3656.

Plan to launch the holiday season in this beautiful historic and festive town!

## Connections

Connections can make your day end on a positive note! You never know who will attend. More often than not, our monthly Thursday afternoon gatherings introduce you to people you might otherwise never meet.

Our next Thursday get-togethers are **November 3**, **December 8**, and **January 12** from 4:00 pm to 6:00 pm in the Emma Rogers Room, 10-340. These once-a-month informal events with coffee, tea, and sweets continue to offer a way for the League to welcome newcomers and stay in touch with friends during the academic year.

Don't hesitate to bring a newcomer or colleague with you for conversation and camaraderie. Come when you can and stay for as long as you wish.

We look forward to seeing you!

## League Interest Groups and Classes

### LEARNING MORE

#### Book Discussion

Barbara Donnelly  
781.646.4617  
Judith Lippard  
[jacs@mit.edu](mailto:jacs@mit.edu)

#### Chorale

Elizabeth Goldberg  
617.324.1487  
[eaparr@mit.edu](mailto:eaparr@mit.edu)  
[web.mit.edu/womensleague/womenschorale](http://web.mit.edu/womensleague/womenschorale)

#### Looking Together

Ann Allen  
617.527.7292  
[annallen@rle.mit.edu](mailto:annallen@rle.mit.edu)

### INTERNATIONAL

#### Japanese Tea Ceremony

Kyoko Wada  
[chado@mit.edu](mailto:chado@mit.edu)  
[web.mit.edu/chado/www/index.html](http://web.mit.edu/chado/www/index.html)

#### Middle Eastern Dance

Loni Butera  
617.491.5657, [loni@mit.edu](mailto:loni@mit.edu)

### WORKING WITH YOUR HANDS

#### Informal Needlework

Beth Harling  
781.749.4055  
[oharling@mit.edu](mailto:oharling@mit.edu)

Nancy Sweeney  
781.646.3107  
[n-j-sweeney@verizon.net](mailto:n-j-sweeney@verizon.net)

#### MIT Gardeners' Group

League Office  
617.253.3656  
[wleague@mit.edu](mailto:wleague@mit.edu)  
[web.mit.edu/womensleague/gardeners](http://web.mit.edu/womensleague/gardeners)

#### Women's League Community Craft Fairs

Brenda Blais  
[bmblais@mit.edu](mailto:bmblais@mit.edu)

### NEW FRIENDS AND CONTACTS

#### CitySide Dining

League Office  
[wleague@mit.edu](mailto:wleague@mit.edu)

#### MIT Japanese Wives Group

Kimie Shirasaki  
781.721.2517  
[jmitjwg@yahoo.co.jp](mailto:jmitjwg@yahoo.co.jp)

Groups meet weekly, bi-monthly or monthly. Contact the above women to learn more about their groups.



## John F. Kennedy Presidential Museum and Library

**Wednesday, January 11, 2012**  
**11:00 am to 2:00 pm**

In this impressive building designed by I.M. Pei, the artifacts and memorabilia commemorating the life of our 35th president, John F. Kennedy, are organized for easy viewing and understanding. There are several short videos depicting such critical historical events as the Cuban missile crisis. Letters, books and the complete furniture from his White House Oval Office are also on display. Visit [www.jfklibrary.org](http://www.jfklibrary.org) for more details.

We will meet at **10:30 am sharp**, on the inbound platform of the Kendall Red Line T Station at MIT, to travel together to the JFK Library and Museum. If you wish to travel alone, you can take a JFK shuttle bus directly to the library from the JFK Red Line Station. This bus runs about every 20 minutes for the 10-minute ride to the library. There is also ample free parking at the library.

We will begin our visit at the Library and Museum at **11:00 am**. After a short film summarizing JFK's early family political life, we will be able to view the many exhibits individually. There is currently a **special exhibit devoted to Jacqueline Kennedy — In Her Voice: Jacqueline Kennedy, The White House Years**.

There is a small café where we can purchase light fare following our tour and enjoy the magnificent view of Boston Harbor while we eat and talk.

The cost for admission is \$9.00, payable at the door. Please call the League office at 617.253.3656 to register for the tour, indicating how you will get to the Library. **Please register by January 9.**



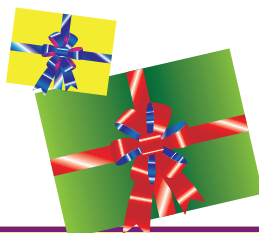
## Chorale Holiday Concert

**Sunday, December 11 • 4 pm**  
**The Dante Alighieri Society**  
**Kendall Square**  
**41 Hampshire Street, Cambridge**

**Free • Reception following the concert**

In its 2011 holiday concert, the MIT Women's Chorale will continue its exploration of the music written for young women at a Venetian hospice for abandoned children by singing the *Gloria* of Antonio Vivaldi. The *Gloria*, and a selection from Bach's *Magnificat in D*, will be sung with chamber orchestra, conducted by the always-entertaining Kevin Galiè. Singing both *a cappella* and accompanied by our pianist, Sue Swalley, the Chorale will perform music of Abbess Hildegard von Bingen, Bach, Victoria, Vaughan Williams and a lovely contemporary Hanukkah piece. Christmas pieces sung in Russian and Spanish will reflect the international character of the Chorale.

Parking suggestions will be posted on the Chorale website, <http://web.mit.edu/womensleague/womenschorale/>.



## MIT Women's League Community Craft Fair

**Thursday & Friday, December 15 & 16**

Hand made cards, ceramic tile photos, jewelry of all types, specialty gifts and more, maybe found for sale at the annual Holiday Craft Fair sponsored by the MIT Women's League Community Crafters. The fair will be held in Lobby 10 from 9:00 am to 5:00 pm on Thursday, December 15, and Friday, December 16. You may find the perfect gift for a relative or friend!

If you are a crafter and would like to sell your creations at the fair, log on to the Women's League website at [web.mit.edu/womensleague](http://web.mit.edu/womensleague) and click "Get Involved" and then "Community Craft Fairs." All applications will be reviewed by the MIT Women's League Craft Fair Committee appointed by the MIT Women's League Executive Board.



## Daffodil Days 2012

Since 1998, the Women's League has organized the Daffodil Days campaign at MIT for the American Cancer Society and raised over \$350,000. This past year MIT raised approximately \$32,000 for cancer research, treatment, and education. Each year the project has expanded to reach more departments, labs, offices, and individuals on campus and we look forward to that phenomenon happening again!

In late January information packages will be mailed to the coordinators in the participating offices, labs and departments. Shortly thereafter, the new campaign will begin and you may place your order for Gifts of Hope, Bears and Bunches, and daffodil bouquets. All will be delivered in mid-March. If your work area is not currently participating in the campaign but would like to do so, please contact the League office at 617.253.3656 or [wleague@mit.edu](mailto:wleague@mit.edu) to make arrangements for a coordinator.

The Daffodil Days program is your chance to fight back against cancer by raising funds and awareness to help beat the disease. The American Cancer Society explains that "While the Daffodil Days program involves offering daffodils every spring to donors in appreciation for their contributions, it is about more than just giving beautiful flowers—it is everyone's opportunity to create a world with less cancer and more birthdays, where cancer never steals another year from anyone's life."

Looking forward to another successful year!

## Notable

**11/30**

Book Discussion:  
*Surely You're Joking,  
Mr. Feynman!*  
by  
Richard Feynman

**1/25**

Book Discussion:  
*The Warmth  
of Other Suns*  
by  
Isabel Wilkerson

## Transition House



### Transition House

Transition House, our neighbor and our partner, provides emergency shelter for women and children fleeing domestic violence. While under its protective wing, the women receive counseling and get training to prepare them to "transition" into permanent housing. They work hard to rebuild their lives and regain their independence. Many have risked everything to find safety for themselves and their children.

To help as them make this enormous change in their lives, the Women's League collects donations from the MIT community each month to assist Transition House. Since women passing through this program arrive with only what they can carry with them, the needs are on-going for specific items. The following items are requested for the next few months:

- November: warm blankets/comforters (full and twin).
- December: sheets (full and twin) and towels. Gift cards to Rite Aid, Shaw's, and Target help these women thrive

and provide the bonus of allowing them to make purchases of their own choosing — an empowering and important part of the healing process.

- January: sheets (full and twin) and towels.
- T passes with added value are always welcome, as are disposable diapers in all sizes.

Your donation can be left at the Women's League Office, Building 10-342.

## Email update

If you have become an email user and would like to receive our notes and reminders or if your email address has changed, please advise the League office at [wleague@mit.edu](mailto:wleague@mit.edu).

## General Information

The MIT Women's League newsletter is published four times during the academic year. The deadline for the Feb/Mar issue is January 1. All items should be sent to the Women's League office.

Please call the League office for a hard copy of the newsletter and for answers to questions you may have. The office can also arrange for your membership.

### Staff Associate

Sis de Bordenave

### League Chair

Kim Watson

### Honorary Chair

Priscilla Gray

### Photography

Richard Janus

### Design

Tim Blackburn Design



**MIT Women's League  
Massachusetts Institute  
of Technology**

77 Massachusetts Avenue  
Room 10-342  
Cambridge, MA 02139-4307  
[web.mit.edu/womensleague](http://web.mit.edu/womensleague)

### Contact

Sis de Bordenave  
617.253.3656  
[wleague@mit.edu](mailto:wleague@mit.edu)