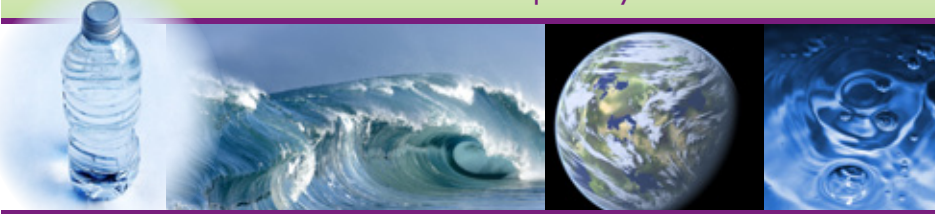


In League...

MIT
WOMEN'S
LEAGUE

A quarterly newsletter

November 2009 – January 2010



Running Out of Water: What's the Problem, What's the Solution?

Catherine N. Stratton
Critical Issues Lecture

Tuesday, November 3, 4 pm
Wong Auditorium, Tang Center,
70 Memorial Drive

Free and Open to the Public

The world's population explosion — 6.7 billion today, 9.3 billion in 2050 — is overwhelming the supply of water. At the same time, climate change and pollution are reducing the availability of useable water, even in regions that thought they had plenty. Failure to act is having grave consequences everywhere — water deficits, starvation, disease, political instability, regional conflicts. Yet technologies exist today that can conserve water, clean it up, minimize its use. This Lecture brings together four professionals who have spent years studying and working on water problems around the world.

Moderator

Peter P. Rogers is Gordon McKay Professor of Environmental Engineering and Professor of City and Regional Planning at Harvard. He is a senior adviser to the Global Water Partnership, an organization devoted to improving global water-management practices, and a recipient of Guggenheim and Twentieth Century Fund fellowships. His article in *Scientific American* (August 2009), "Facing the Freshwater Crisis," anticipates this Lecture.

Panelists

John Briscoe is Professor of the Practice of Environmental Health at the School of Public Health and Gordon McKay Professor of the Practice of Environmental Health at the School of Engineering and Applied Sciences, both at Harvard. He focuses on issues of water and economic development and helps facilitate water projects around the world, most recently as senior adviser to the World Bank's \$50-billion water program.

Franklin Fisher is Jane Berkowitz Carlton and Dennis William Carlton Professor of Microeconomics, Emeritus at MIT and a prolific writer of books and articles in the area of economics. He chairs an Israeli, Palestinian, Jordanian, Dutch, and American project on the economics of water, especially in the Middle East, a project that he describes in *Liquid Assets: An Economic Approach for Water Management and Conflict Resolution in the Middle East and Beyond*.

Susan Murcott is a senior lecturer at MIT working to develop water and wastewater treatment technologies for developing countries around the world. She leads initiatives in the emerging field of household water treatment and safe storage as part of her larger effort, "Safe Water for 1 Billion People," a project

"Running Out of Water" continues the Catherine N. Stratton Lectures on Critical Issues, which the MIT Women's League sponsors annually to honor Kay Stratton, a woman whose energy, grace, and intelligence have enriched the MIT community for more than sixty years. Kay is an active participant in the planning and execution of all of the Lectures.



"Let that Stress Go!" Lunchtime Relaxation for Women

Two Mondays, 12– 1 pm
11/23 and 12/21
Emma Rogers Room (10-340)

Join us for the second in a series of three relaxation sessions and enjoy a gentle approach to relaxation through easy-to-do breath techniques, a guided imagery journey, and some comfortable seated movement stretches to soothe mind and body led by presenter, Lynn Roberson.

You will take home relaxation tools, and most importantly, you will receive an hour of giving yourself much deserved TLC (tender loving care). Beginners and experienced relaxation enthusiasts are welcome. No prior experience necessary. Come to one session or come to both! Contact the League office. **Free.**

About the Presenter:

Lynn Roberson has supported women's well-being at the Institute for over 20 years and has offered various forms of relaxation programs to the MIT community. Through the Women's League, Roberson is very pleased to offer this lunchtime program again.



Art at Longfellow House

Wednesday, November 18

Many have visited the Longfellow National Historic Site in Cambridge, just outside Harvard Square. We were there not too long ago to tour the house and learn about Henry Wadsworth Longfellow, the man, and the family home from 1837–1852.

In November we have planned a special trip there, one that will focus on its fine arts collection. Please join us to view this unique collection, one that numbers approximately 2000 pieces (paintings, drawings, prints, and sculpture) and showcases the tastes and interests of Longfellow, himself, his wife, their children, other family members, and friends. Paintings by American and European artists are represented, including works by Gilbert Stuart, William Morris Hunt, Eastman Johnson, Albert Bierstadt, Jean Baptiste Camille Corot, and many others. In addition, watercolors done by the Longfellow children and silhouette portraits of the family are part of the collection.

If you would like to travel with a group from MIT, we'll meet at the Kendall T Station at 10:00 am. Or you can meet us at the House at 105 Brattle Street, Cambridge. Our tour will begin at 10:30 am. No children under 13 will be allowed (as designated by the home). Tour cost is \$3.00.

Please contact the League office at 617.253.3656 or email wleague@mit.edu by Thursday, November 12, to reserve your place and let us know if you wish to meet or travel on your own.



Holiday Wreath Making

Wednesday, December 2

Wreath makers, new and experienced, are needed to help with the greenery design and assembly on Wednesday, December 2, from 9 am to 11 am in the Mezzanine Lounge in the Stratton Student Center (W20-3rd floor). Come and help for as long as your time permits.

Experienced crafter Brenda Blais guides our group of volunteers through the process of making these wreaths on their wooden frames. This is a wonderful opportunity to learn if you have never done something like this before and the balsam fragrance in the air makes this a delightful way to begin the holiday season.

During the years when Carl Taylor Compton and his wife Margaret lived at the President's House (1930-1949), the League began the tradition of making the three evergreen wreaths to hang above the doors at the 77 Massachusetts Avenue entrance to the Institute during the holiday season. Today, the League also decorates the artificial wreaths that hang in Kresge Auditorium.

Please contact Brenda Blais at 617.253.6852 or email bmbblais@mit.edu to volunteer and learn more.



Holiday Concert

Sunday, December 13 • 3 pm
Elizabeth Killian Hall

Under the inspiring direction of Kevin Galiè, the MIT Women's Chorale will give its annual holiday concert, accompanied by Emily Taylor, pianist, and a host of other instrumentalists. In addition to music of Bach, Schubert, and songs celebrating Chanukah, the concert will include Conrad Susa's "Carols and Lullabies: Christmas in the Southwest." This arrangement of lovely music from several Hispanic traditions will be performed with harp, guitar, and marimba. The Chorale also will perform "Koljada — Christmas Song of the Maidens," a chorus from a little-performed opera, "Christmas Eve," by Rimsky-Korsakov, in a new arrangement Mr. Galiè has dedicated to the Women's Chorale.

Connections

Connections can make your day end on a positive note! You never know who will attend. More often than not, our monthly Thursday afternoon gatherings introduce you to people you might otherwise never meet.

Our next Thursday get-togethers are **November 12**, **December 10**, and **January 14** from 4 pm to 6 pm in the Emma Rogers Room, 10-340. These once-a-month informal events with coffee, tea, and sweets continue to offer a way for the League to welcome newcomers and stay in touch with friends during the academic

year. Don't hesitate to bring a newcomer or colleague with you for conversation and camaraderie. Come when you can and stay for as long as you wish.

We look forward to seeing you.



Holiday Stroll in Rockport

Saturday, December 5 • 10:00 am

Celebrate the holidays with a visit to Cape Ann! Please join us for a festive beginning of the holiday season with the Holiday Stroll in Rockport, MA. Originally settled in 1690 by the sea. Rockport is one of the most charming and artistic towns in New England. For more than 100 year, artists, writers, and musicians have come to Rockport and been inspired for their creative works.

At 10:00 am, we'll meet promptly at Tuck's Candy, 7 Dock Square, for a demonstration of making hand-pulled candy canes, ribbon candies, and chocolate filled satin sticks. Using time-honored traditions, Tuck's is celebrating its 80th anniversary of making delicious candies, www.tuckscandy.com.

Afterwards, there will be time to explore Rockport decked out for the holidays. You might enjoy visiting the Rockport Art Association to view paintings on display there or visiting the shops and art galleries. At this festive time of year many things will be happening in the town. Among them is the arrival of Santa

by boat later that afternoon (3:45 pm) and the tree lighting ceremony (4:00pm) if you wish to remain a bit longer!

We plan to stay for lunch and return sometime mid-afternoon. (That decision can be made individually or by carpools.)

If you would like to carpool, we'll meet at the Alewife 'T' station promptly at 8:30 am. For those traveling separately, we'll meet at 10:00 am Tuck's Candy. Please contact Sis de Bordenave with questions or to register for this event at 617.253. 3656 or email wleague@mit.edu. If you plan to travel to Rockport on your own, please tell Sis your plans.

Notable

12/9
Book Discussion:
The Elegance of the Hedgehog
by Muriel Barbery

1/27
Book Discussion:
Washington's Crossing
by David Hackett Fischer

League Interest Groups and Classes

LEARNING MORE

Book Discussion

Barbara Donnelly
781.646.4617
Judith Lippard
jacs@mit.edu

Chorale

Elizabeth Parr
617.324.1487
eaparr@mit.edu
web.mit.edu/womensleague/womenschorale

Looking Together

Ann Allen
617.527.7292
annallen@rle.mit.edu

INTERNATIONAL

Japanese Tea Ceremony

Kyoko Wada
chado@mit.edu
web.mit.edu/chado/www/index.html

Middle Eastern Dance

Loni Butera
617.491.5657, loni@mit.edu

WORKING WITH YOUR HANDS

Informal Needlework

Lillian Alberty
617.491.3689
Beth Harling
781.749.4055

MIT Gardeners' Group

League Office
617.253.3656
wleague@mit.edu
web.mit.edu/womensleague/gardeners

Scrapbooking & Card Making

Teri Chung
tchung@mit.edu

Tech Community Crafters

Brenda Blais
bmlais@mit.edu

NEW FRIENDS AND CONTACTS

CitySide Dining

League Office
wleague@mit.edu

MIT Japanese Wives Group

Kimie Shirasaki
781.721.2517
jmitjwg@yahoo.co.jp

Groups meet weekly, bi-monthly or monthly. Contact the above women to learn more about their groups.



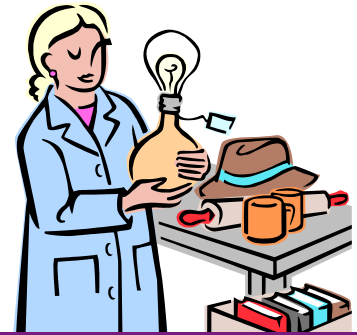
Transition House

Transition House is our neighbor and our partner. Women and children fleeing domestic violence find emergency shelter there. While under its protective umbrella, the women receive counseling and get training to prepare them to “transition” into permanent housing. They work hard to rebuild their lives and regain their independence. Many have risked everything to find safety for themselves and their children.

To help as these women make this enormous change in their lives, the Women’s League collects donations from the MIT community each month to assist Transition House. Since women passing through this program arrive with only what they can carry with them, the needs are on-going for specific items. The following items are requested for the next few months:

- November: warm blankets/comforters (full and twin).
- December: sheets (full and twin) and towels. Gift cards to Rite AID, Shaw’s, and Target help these women thrive and provide the bonus of allowing them to make purchases of their own choosing—an empowering and important part of the healing process.
- January: sheets (full and twin) and towels.
- T passes with added value are always welcome, as are disposable diapers in all sizes.

Your donation can be left at the Women’s League Office Building 10-342.



Volunteer Opportunity: Furniture Exchange

Who We Help

With a realization that university students needed to furnish their living spaces on a minimal budget, the MIT Student Furniture Exchange (the FX) began in 1958 to address this basic necessity.

Located at 350 Brookline Street (WW15) in Cambridge, the FX sells used furniture and housewares at bargain prices and is open to the communities of MIT, Harvard University, Boston University, and Suffolk University.

All proceeds benefit the MIT Women’s League Scholarship Fund, a growing endowment that provides annual financial support to undergraduate women at MIT.

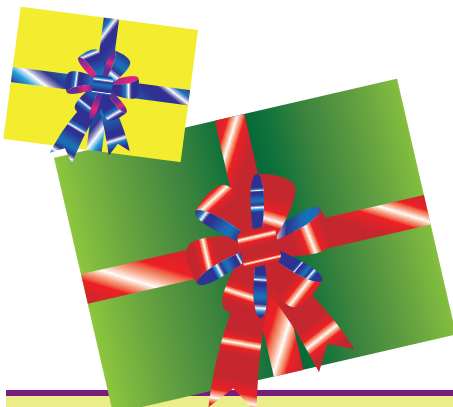
What You Can Do

Volunteer

- Volunteers are always needed for this effort — which has grown busier with each passing year — to unpack and price goods and to help with sales while meeting interesting people.

Ready to Join the Fun?

- Contact the Furniture Exchange at 617.253.4293, email fx@mit.edu, or visit the website at <http://web.mit.edu/womensleague/fx/> for more information about the donation process or to become a volunteer.



Holiday Craft Fair

Thursday & Friday, December 17 & 18

Hand made soaps, jewelry of all types, hand made cards, specialty gifts and more, will be for sale at the annual Holiday Craft Fair sponsored by the Technology Community Crafters. The fair will be held in Lobby 10 from 9 am to 5 pm on Thursday, December 17, and Friday, December 18. You may find the perfect gift for a relative or friend!

If you are a crafter and would like to display your creations at the fair, email craft fair coordinator Brenda Blais at bmblais@mit.edu. She will be happy to send you an electronic application and provide you with the particulars.



Daffodil Days 2010

Could you help bring this project to the MIT Community?

Volunteer Opportunities

End of January:

- prepare packages of posters and sign-up sheets for delivery

End of February:

- pick up the order forms and checks

Mid-March, when Daffodil Days arrives:

- assemble orders
- deliver orders
- sell daffodil bouquets in Lobby 10

If you would like to join this wonderful effort, please contact the League at 617.253.3656 or wleague@mit.edu.

Since 1998, the Women's League has organized the Daffodil Days campaign at MIT for the American Cancer Society. This past year MIT raised \$33,000 for cancer research, treatment, and education. Each year the project has expanded to reach more departments, labs, offices, and individuals on campus. Volunteers are needed.

2009 Fall Fashion — Free For All!

Smiles and happy chatter filled the Emma Rogers Room on Friday, September 25, 2009. International undergraduates joined an enthusiastic group of fashion consultants to stock up on warm winter clothing, business attire and formal wear.

For over fourteen years, the Clothing Service Program of the MIT Women's League has held the event to supply **free** clothing to our international undergraduate students whose budgets are constantly stretched.

Our mission is twofold:

- to help these students, especially the international freshmen from warmer climates, acquire winter essentials before the cold winds begin to blow and
- to assist them in finding appropriate apparel to wear to business interviews and other more formal occasions

If you would like to participate, we would welcome:

- **Donations** of clean, gently used Warm Winter Outerwear, Interview Clothes, and Formal wear. Your donation is tax deductible and we supply a receipt for income tax purposes. Please provide us with a list of your donations and include your name and address so your contributions can be acknowledged. Donations are welcome all year.

- **Volunteers** to join the team once a quarter to prepare donations for the annual event – tag, sort, box, etc. Refreshments are served; Or be a 'Fashion Consultant' at our annual 'Fall Fashion Free For All'; Or send 'Thank You' notes to donors. (MS Word samples already to go).

Ready to Join the Fun?

Please call the League office, 617.253.3656, or email wleague@mit.edu if you have questions or if you would like to volunteer. Clothing items may be brought to the Women's League Office. It would be best to call or email before you come to make sure there is someone to receive your donation.

General Information

The MIT Women's League newsletter is published four times during the academic year. The deadline for the Feb/Mar issue is January 1. All items should be sent to the Women's League office.

Please call the League office for a hard copy of the newsletter and for answers to questions you may have. The office can also arrange for your membership.

Staff Associate

Sis de Bordenave

League Chair

Sandra Boynton

Honorary Chair

Priscilla Gray

Design

Tim Blackburn Design



**MIT Women's League
Massachusetts Institute
of Technology**

77 Massachusetts Avenue
Room 10-342
Cambridge, MA 02139-4307
web.mit.edu/womensleague

Contact

Sis de Bordenave
617.253.3656
wleague@mit.edu