

---

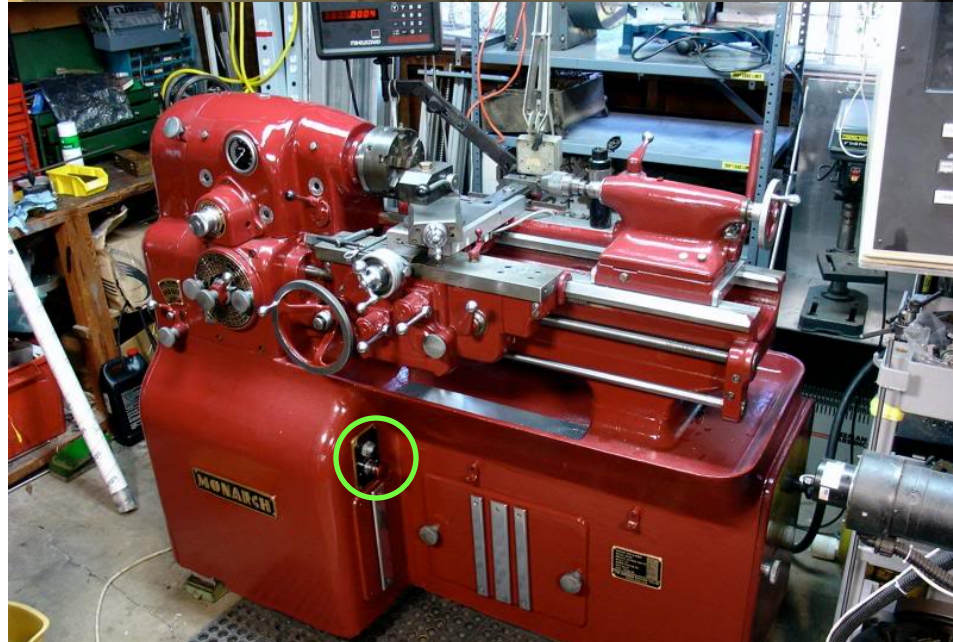
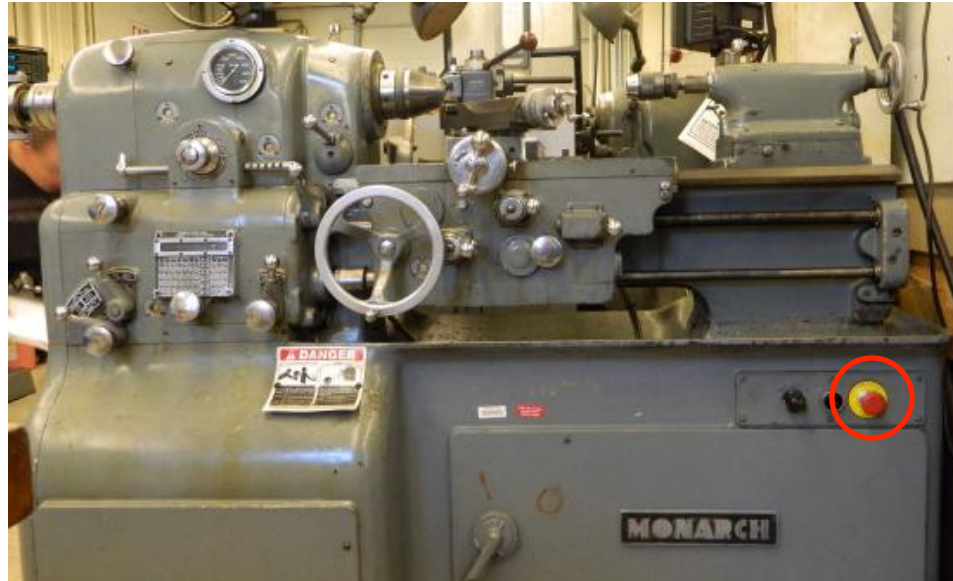
# Safety Topic: Rotating Equipment

Justin Kleingartner



# Safety protocols for operating a lathe

- Dos:
  - Locate emergency stop button before use
  - Be sure that workpiece is secure in the chuck, that the chuck key has been removed and part is free to rotate by hand without interference.
  - Ensure proper tooling has been installed, adjusted and secured for desired machining operations.
  - Secure hair and clothing so that it cannot become entangled with machine or tooling



# Safety protocols for operating a lathe

- Don'ts:

- **Do not wear gloves, rings, watches or loose clothing. Confine long hair.**
- Do not lean on machine. Keep your face and eyes away from flying chips.
- Do not make adjustments while the machine is operating. Wait until the machine has come to a complete stop.
- Do not place hands on work turning in the lathe.
- Do not use calipers or gauges on a workpiece while machine is moving.
- Do not make heavy cuts on long slender pieces because the work could bend and fly out of the lathe.
- Do not leave lathe unattended while it is running.

