



success factors



connection to need. How **real** is it?

success factors



involved **user** or representative

success factors



shared **team** vision

success factors



realistic **stretch** goal

success factors



understanding the **competition**

success factors



frequent, realistic **testing**

success factors



Petra



frequent, **realistic** testing

success factors



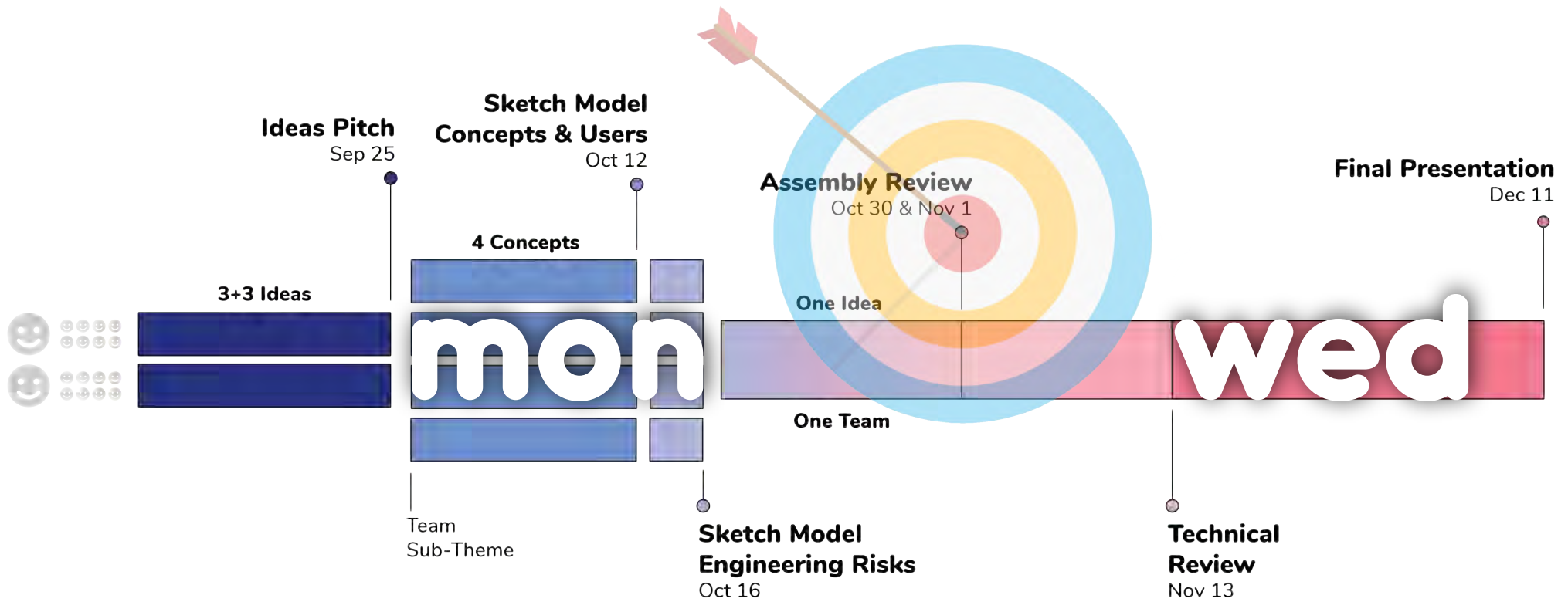
open communication

success factors



working in **Pappa!**

success factors

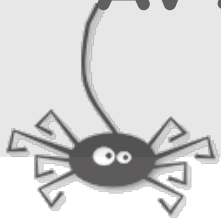


mon 30



wed 1

AV setup: bring two computers, one for your main slides, one for specifications



AV setup: bring two computers, one for your main slides, one for specifications

user need	product attribute(s)	engineering specification(s)
can be easily transported	weight	total weight less than 40 lbs
it easily stored in the home garage	size	less than 24" x 24" x 24" in smallest configuration
can handle most repair situations	lifting capability	more than 100 15 cycles for a 3000 lb automobile with external power
can be used on many uneven surfaces	stability	3000 lb vehicle raised 16 inches will not tip under 400 lbs side loading



user need	product attribute(s)	engineering specification(s)
can be easily transported	weight	total weight less than 40 lbs
is easily stored in the home garage	size	less than 24" x 24" x 24" in smallest configuration
can handle most repair situations	lifting capability	more than 15 cycles for a 3000 lb automobile with external power
can be used on many uneven surfaces	stability	3000 lb vehicle raised 16 inches will not tip under 400 lb side loading

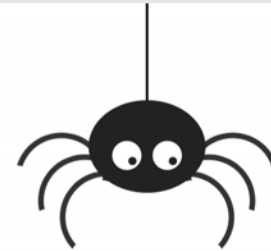


practice times: 8:30 AM to 9:15 AM before each class



online submission: images, link to online assembly view by midnight before

discussion: 12 minutes, discuss your most current work

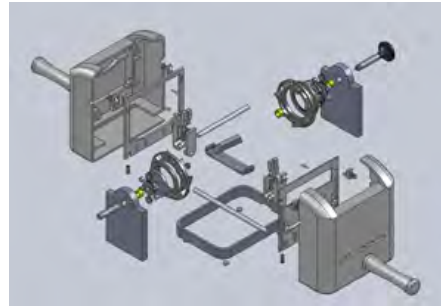


product contract: value proposition, up-to-date user, and key needs, attributes and specifications

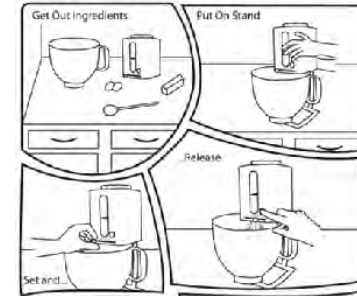
assembly review

design variations: vision, web-viewable assembly, exploded assembly, use storyboard...

assembly review

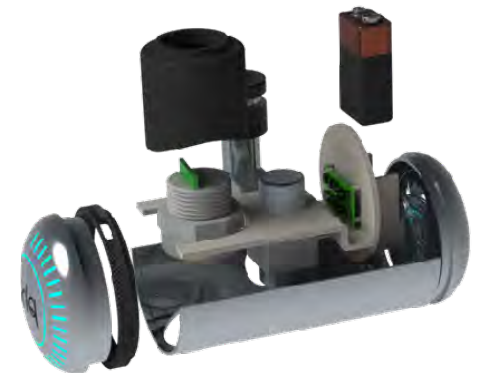
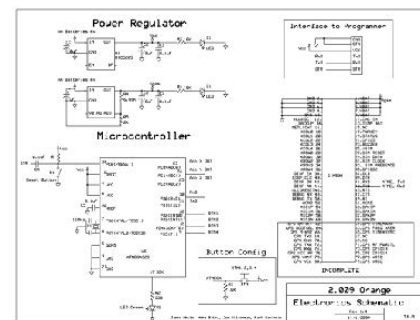


The Flour Pot



design variations: vision, web-viewable assembly, exploded assembly, use storyboard...

assembly review

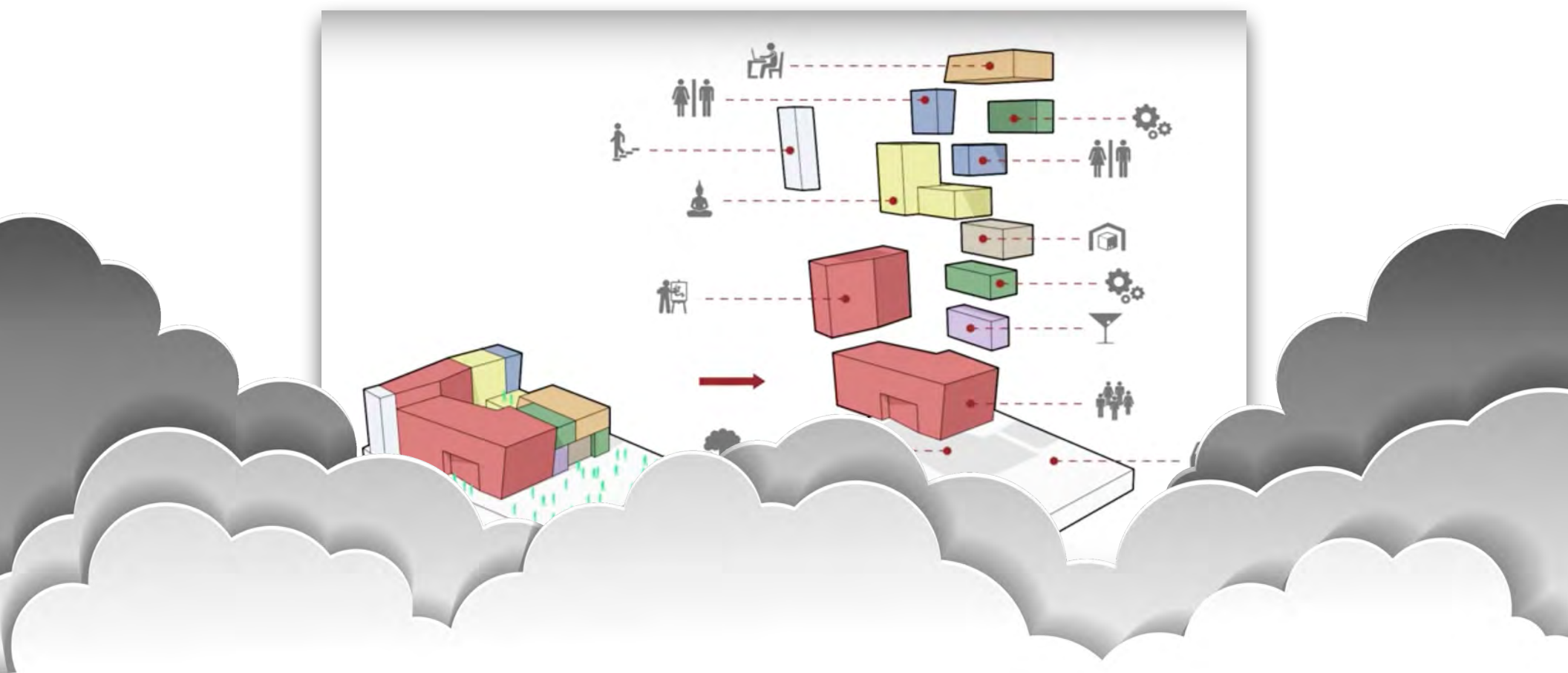


who-did-what: all team-members contribute to the deliverable. You may work in pairs

assembly review

A series of stylized, layered clouds in various shades of gray, creating a sense of depth and texture. The clouds are positioned at the bottom of the frame, with some appearing darker and more prominent than others.

design time!



milestone schedule

digital
submit

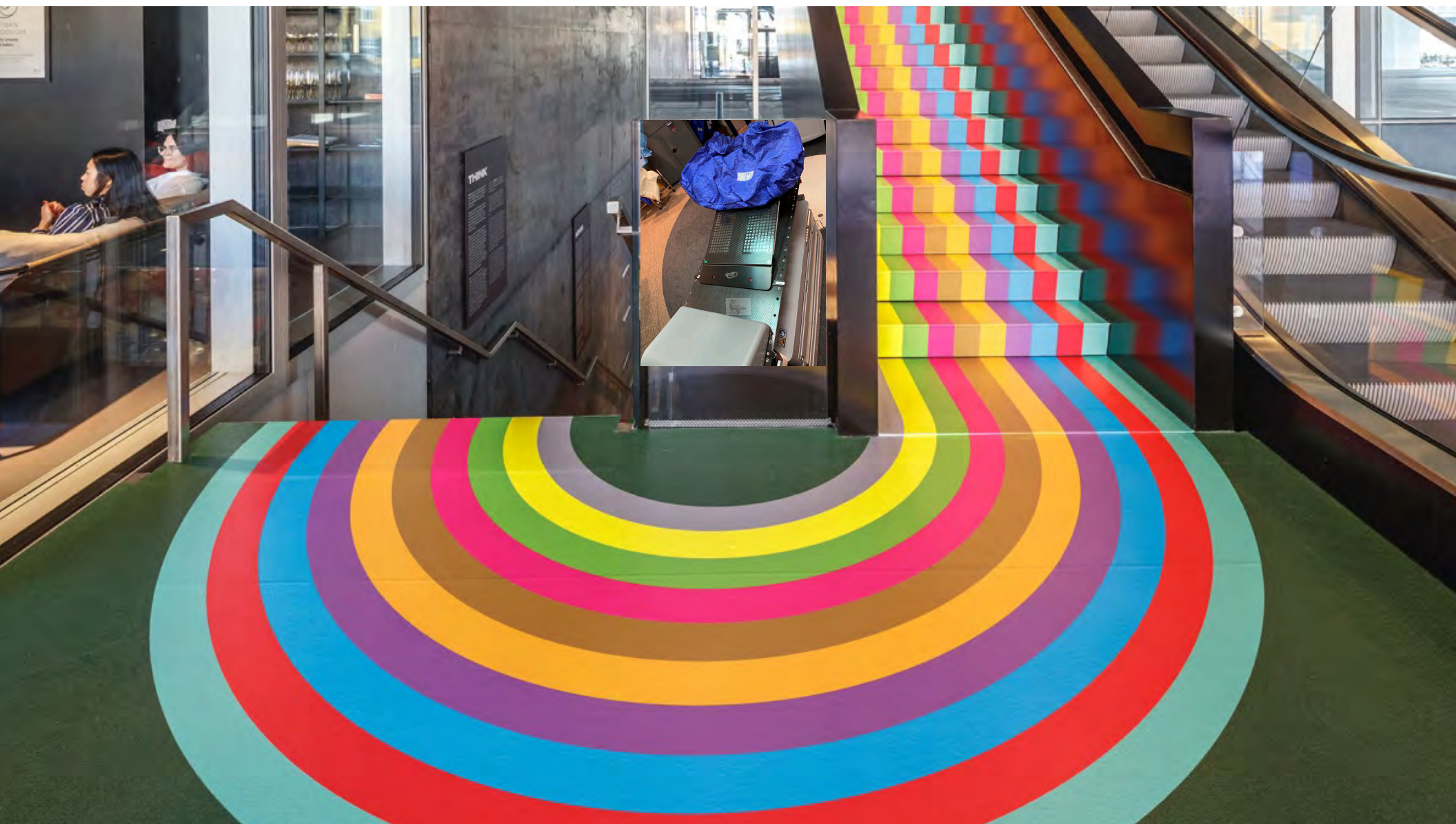
present









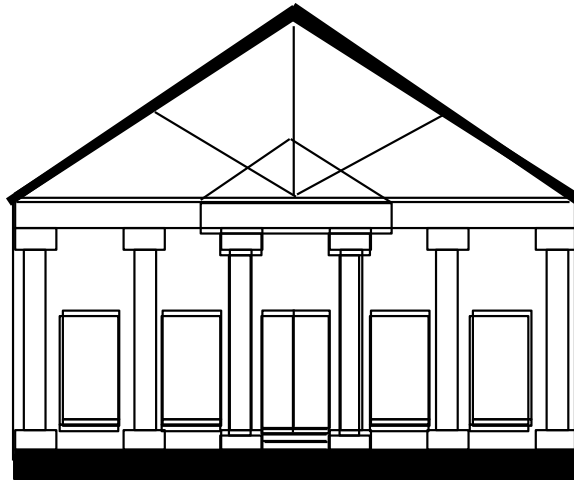








form follows function Louis Sullivan, 1856-1924



form follows function Louis Sullivan, 1856-1924



form instructs



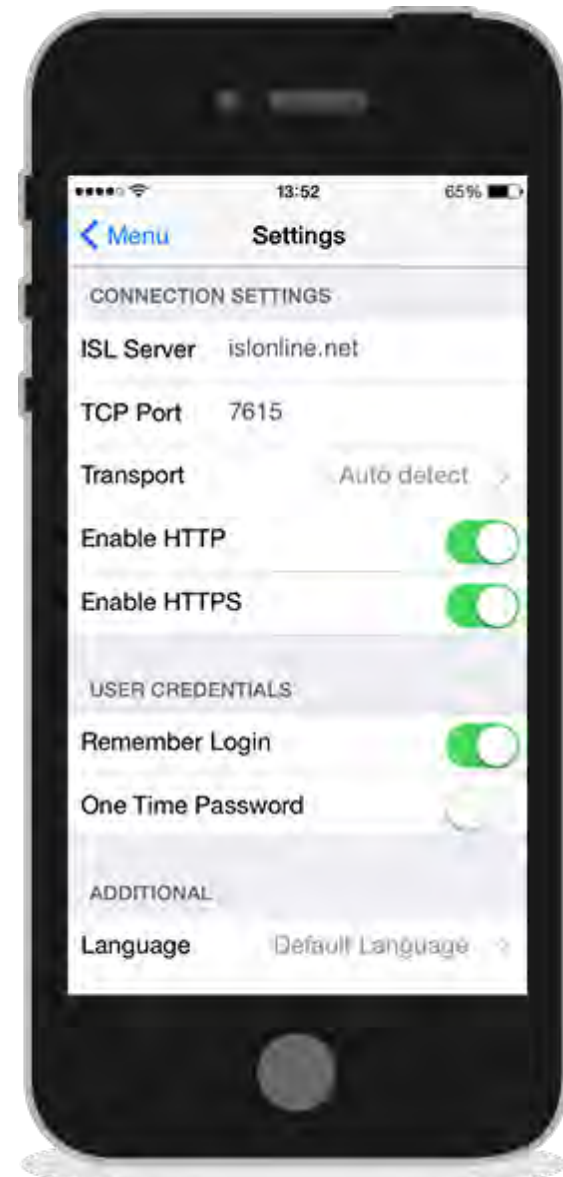
form follows **function**

circles imply rotation

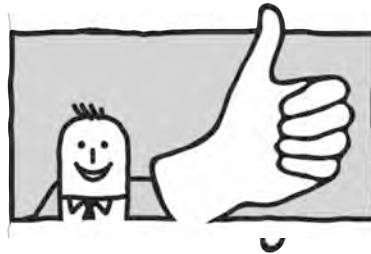


form follows function

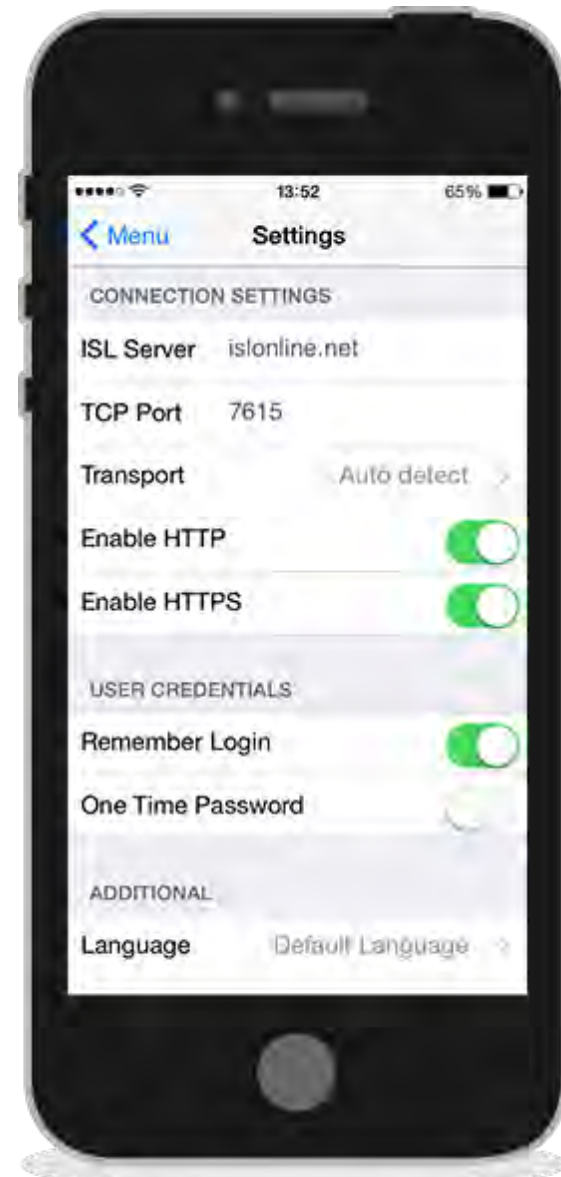
negative forms imply motion



form follows function



negative forms imply motion

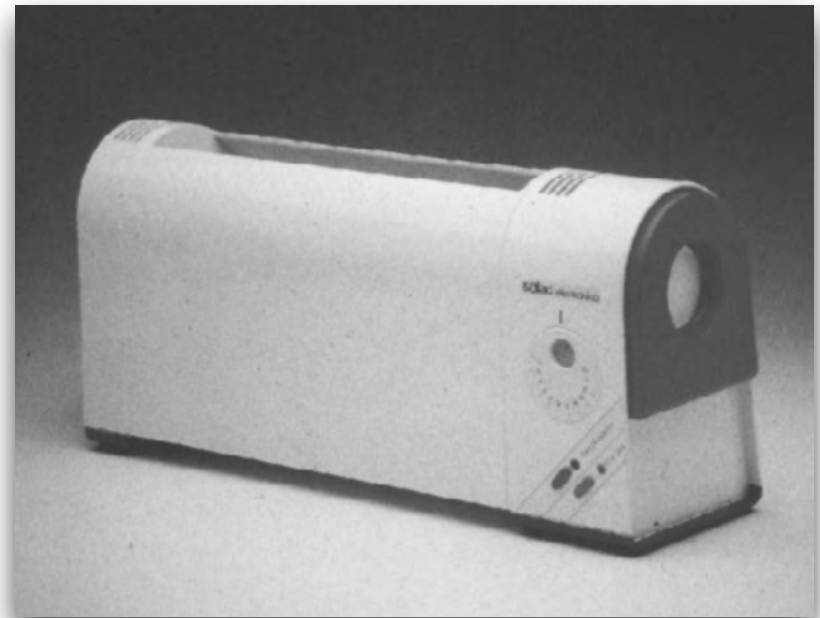


form follows **function**

parting lines have detail
things separate on lines



form follows **function**



interface metaphors are good

form follows **function**



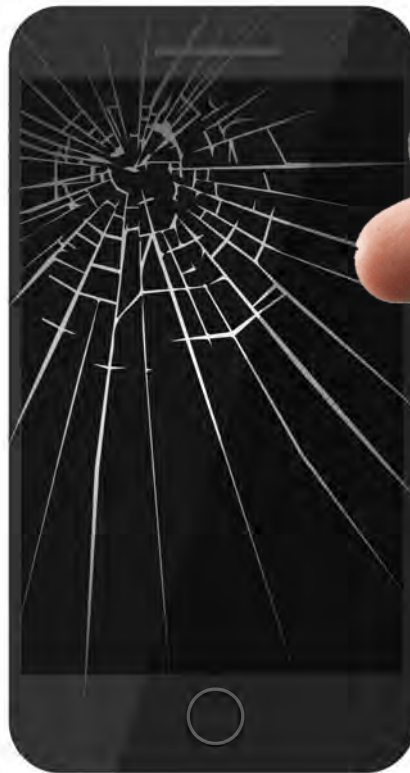
direct metaphors are better

form follows function



human factors triumph

form follows function



form follows function

nasty bits



nice bits

form follows **function**

nasty bits



nice bits



form follows function

convey your value proposition



form follows **function**



convey your team values

form follows function



convey your team values

form follows function



convey your team values

form follows function



think about misuse



product

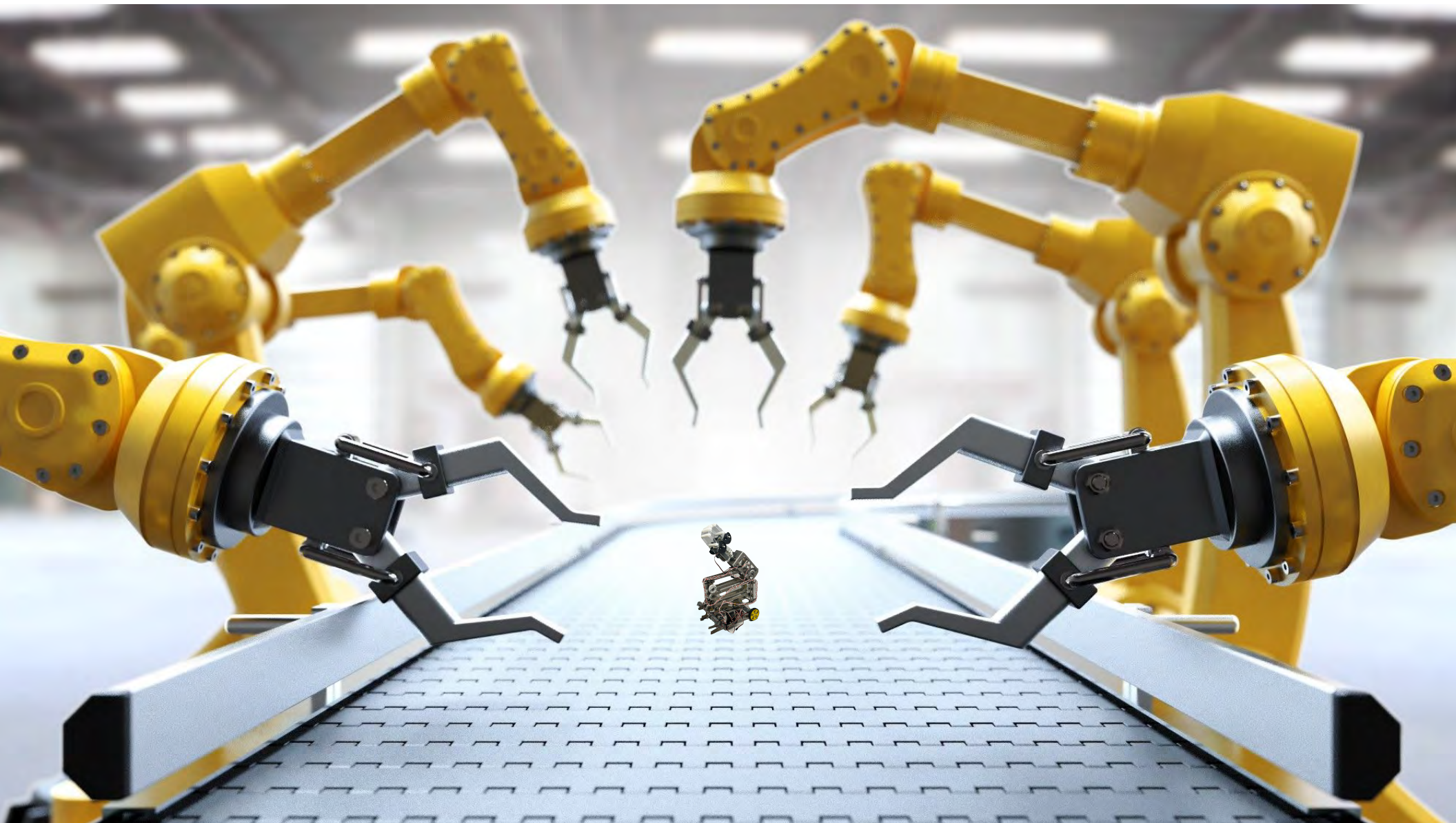
not product

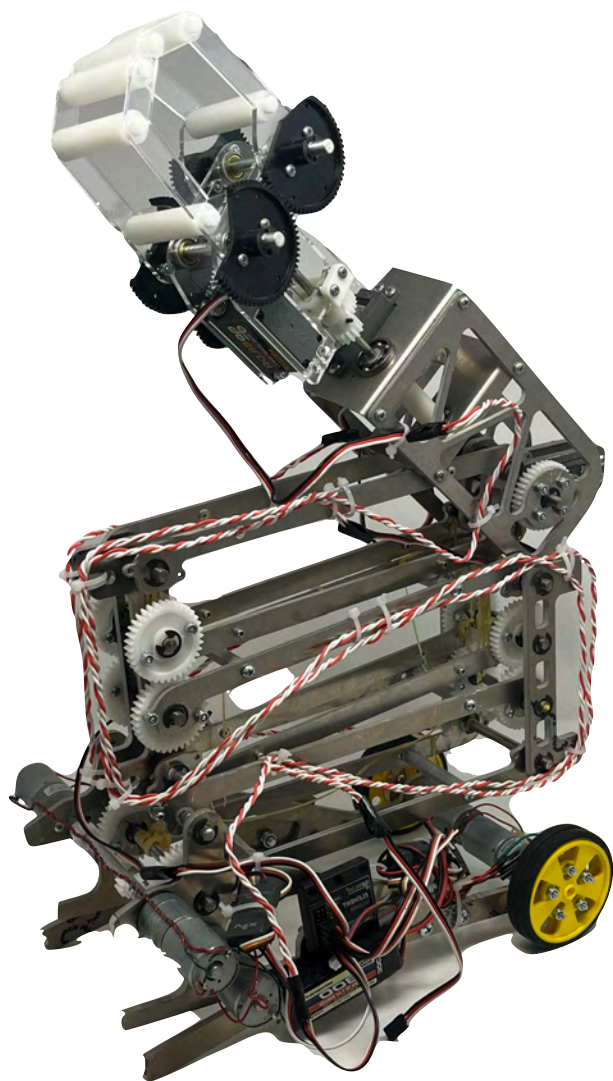










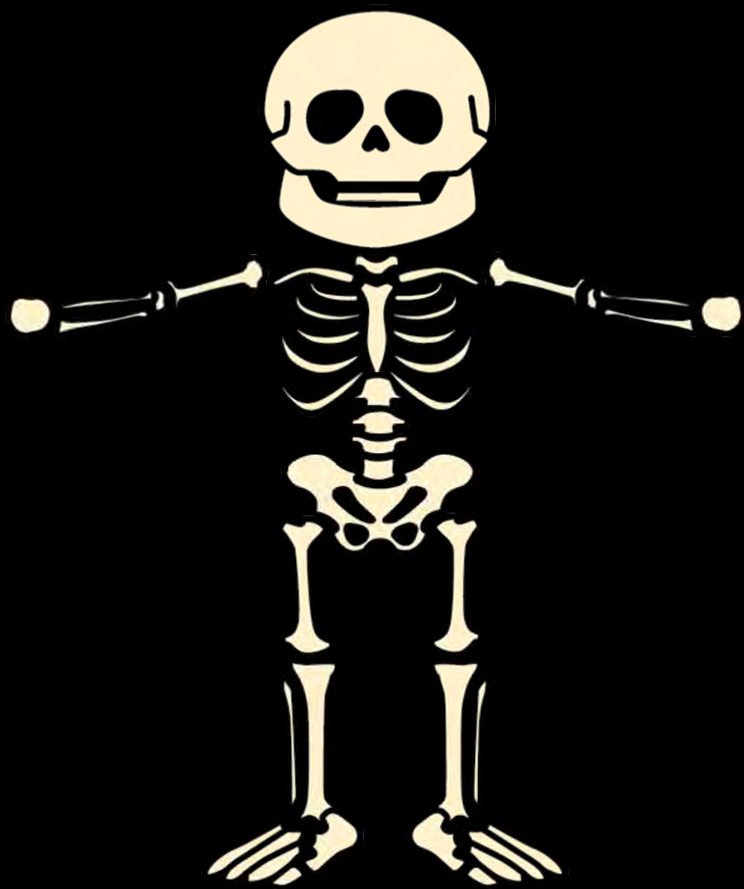


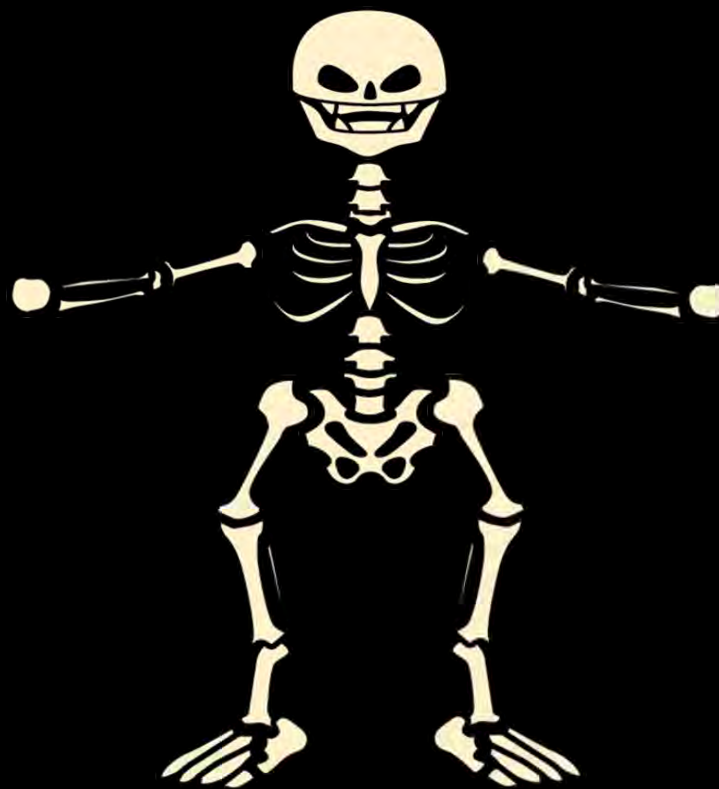
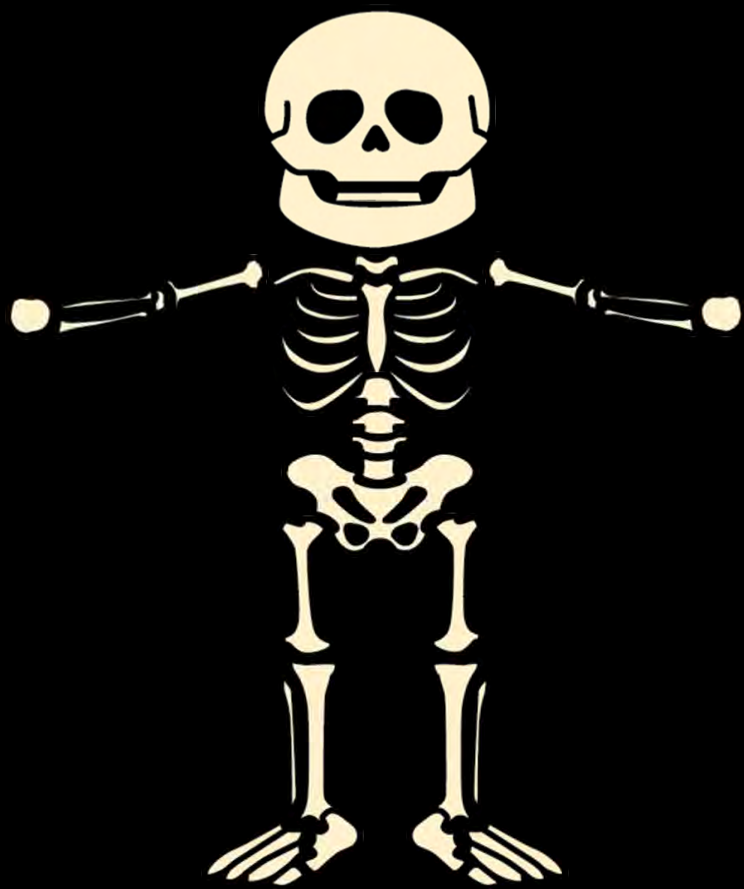


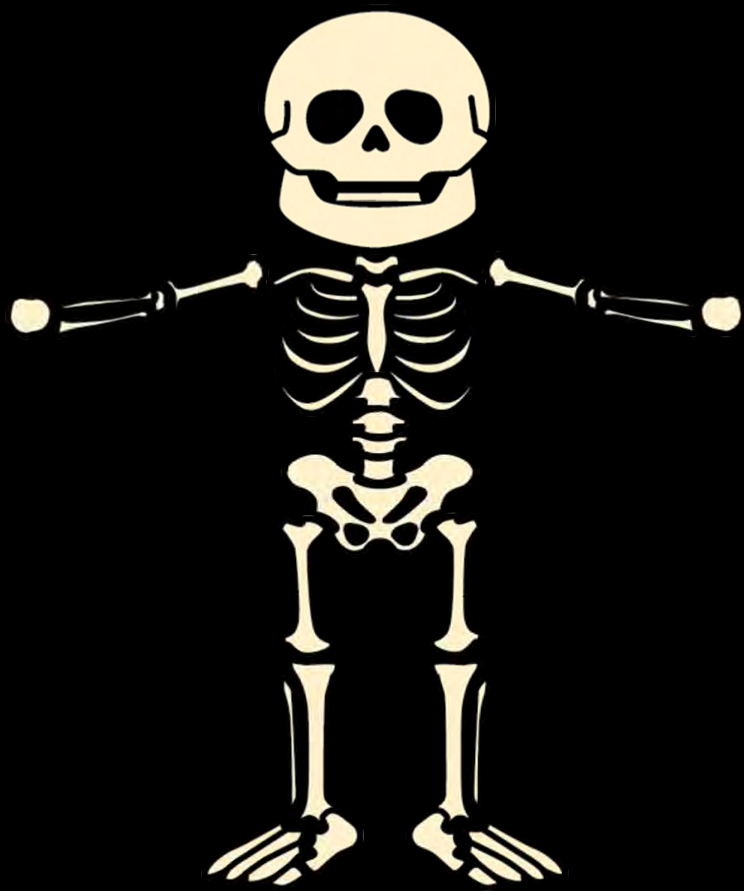
product

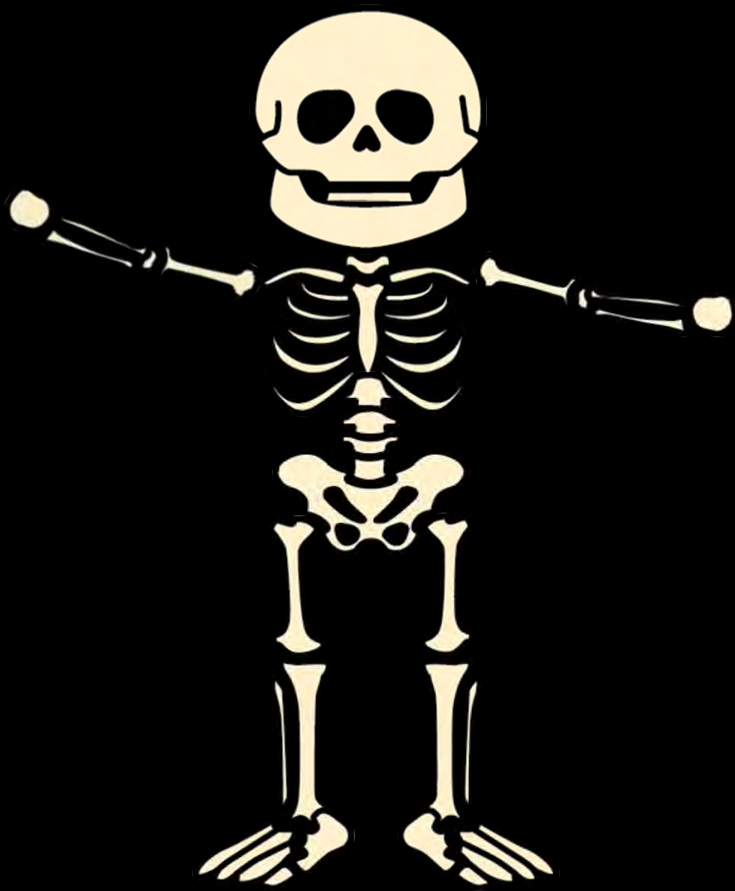
not product

















.6

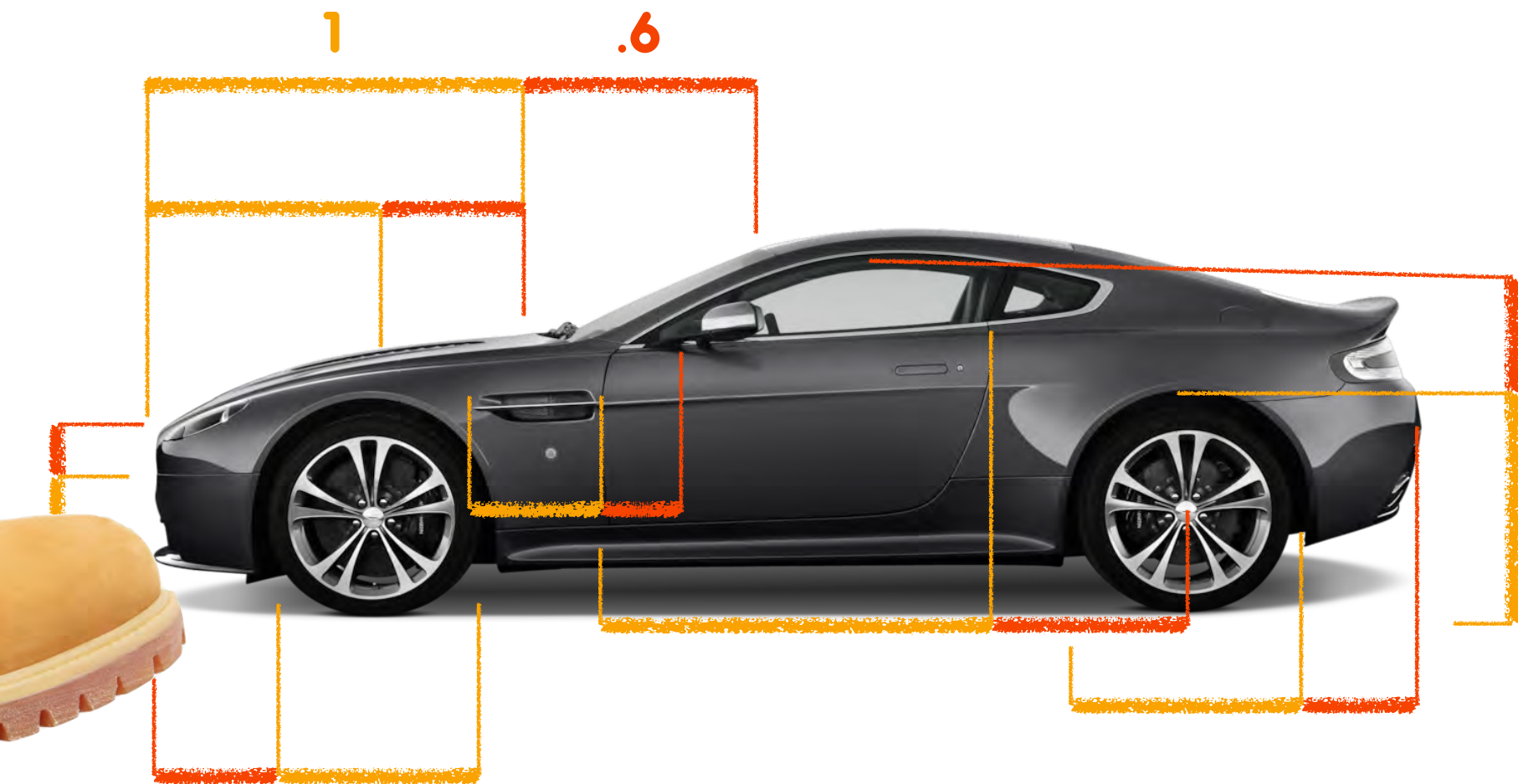
1



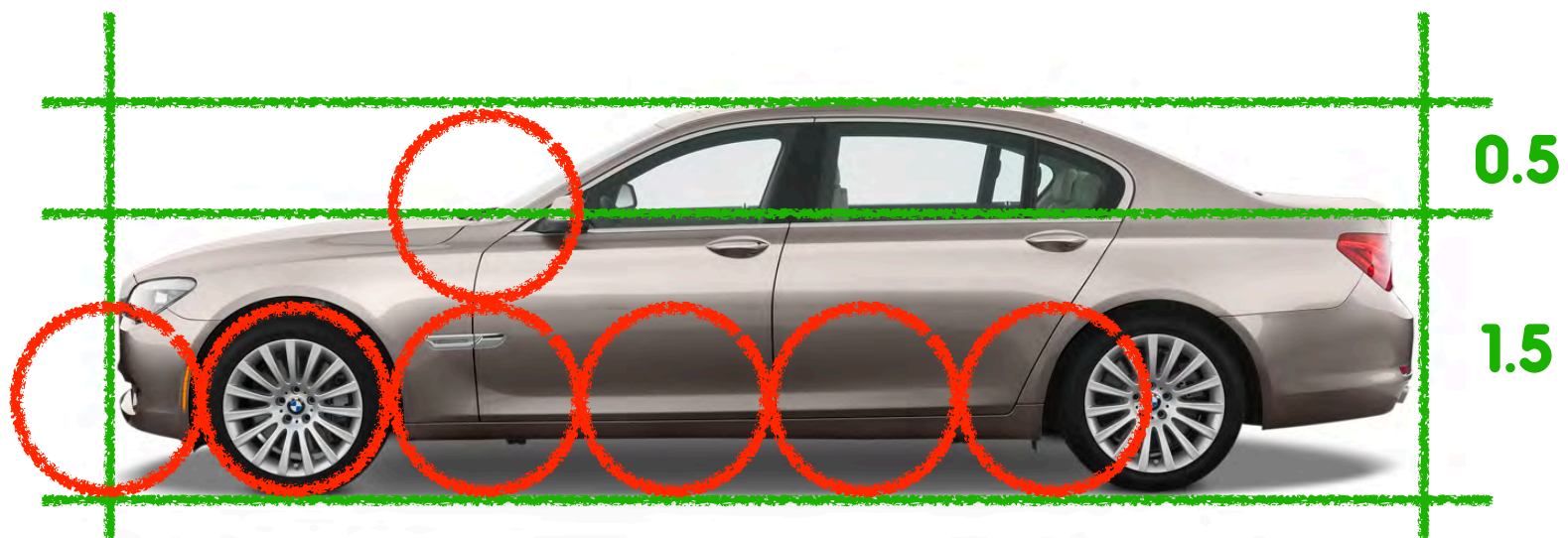
.6

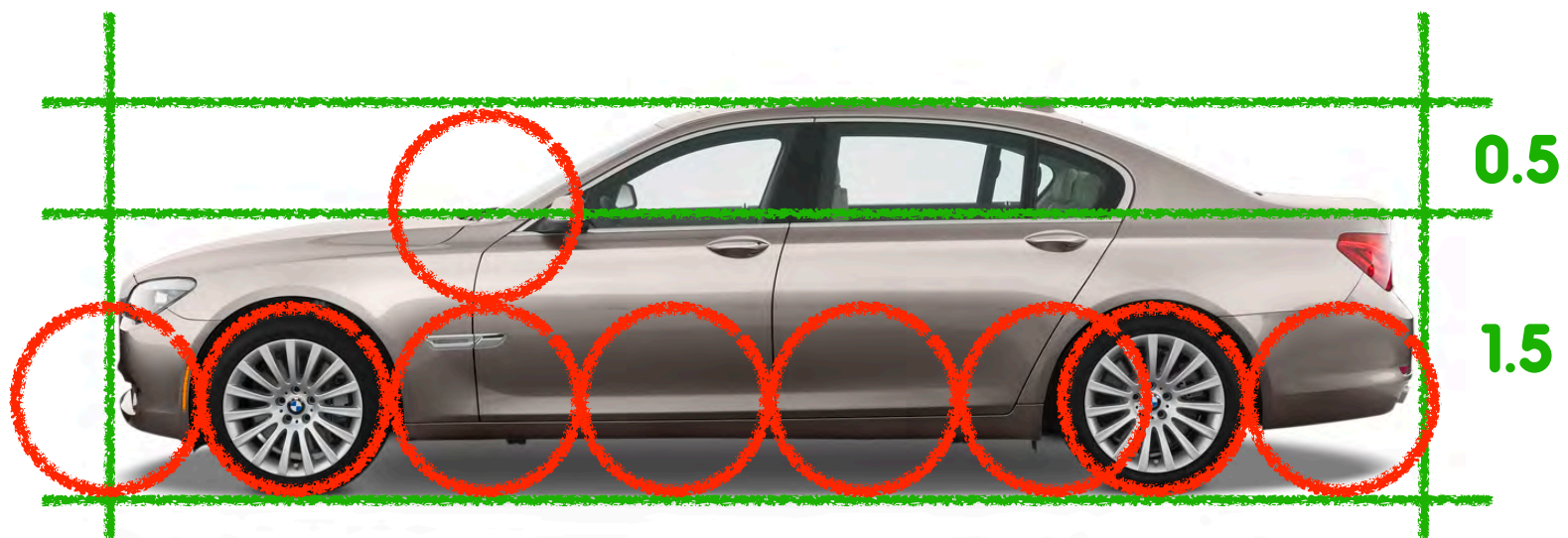
1

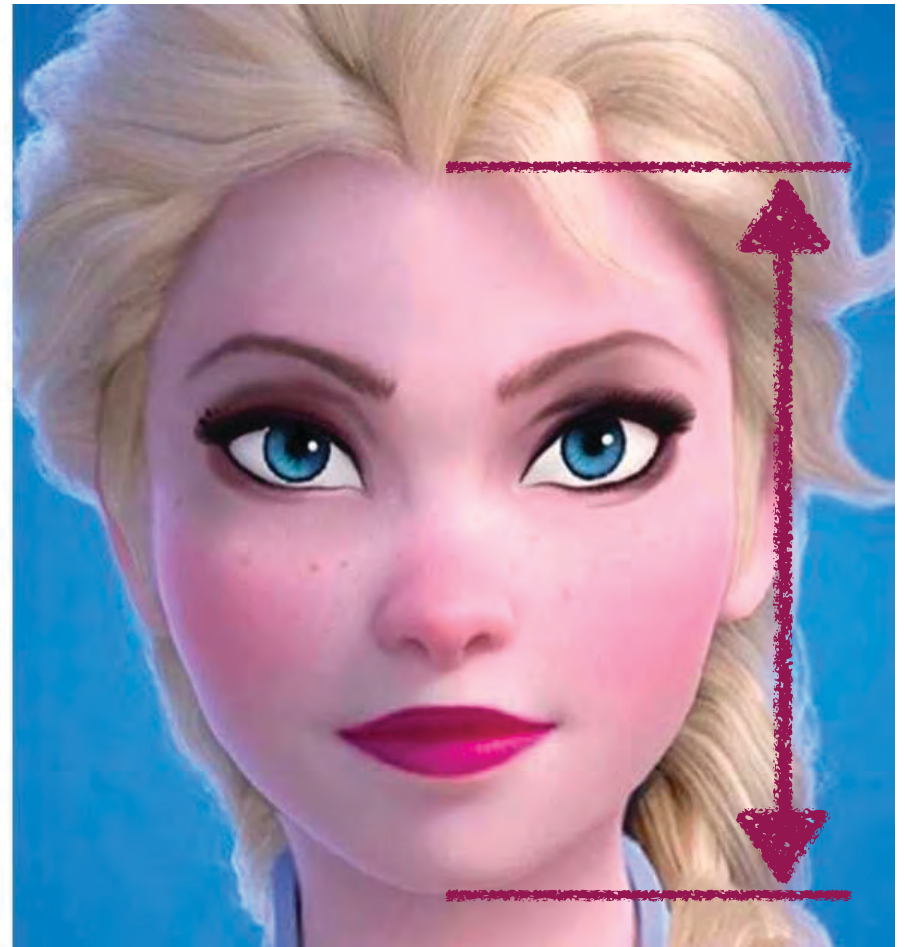


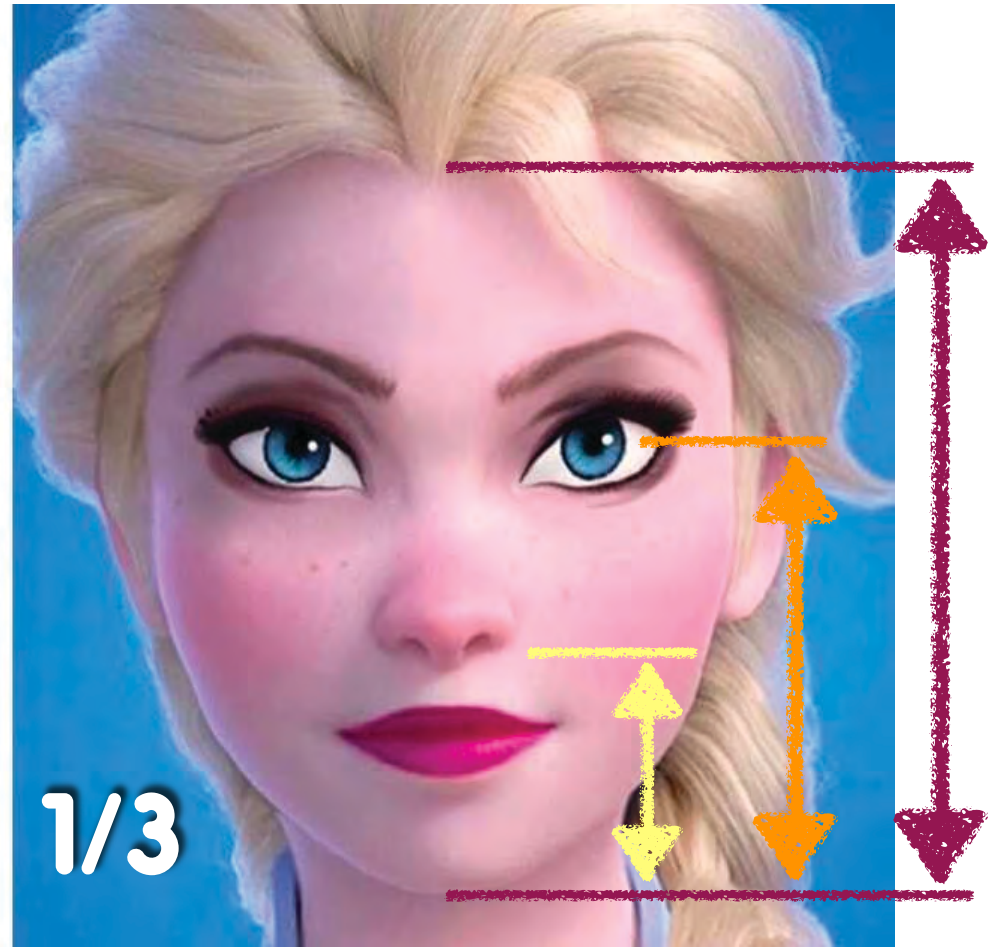


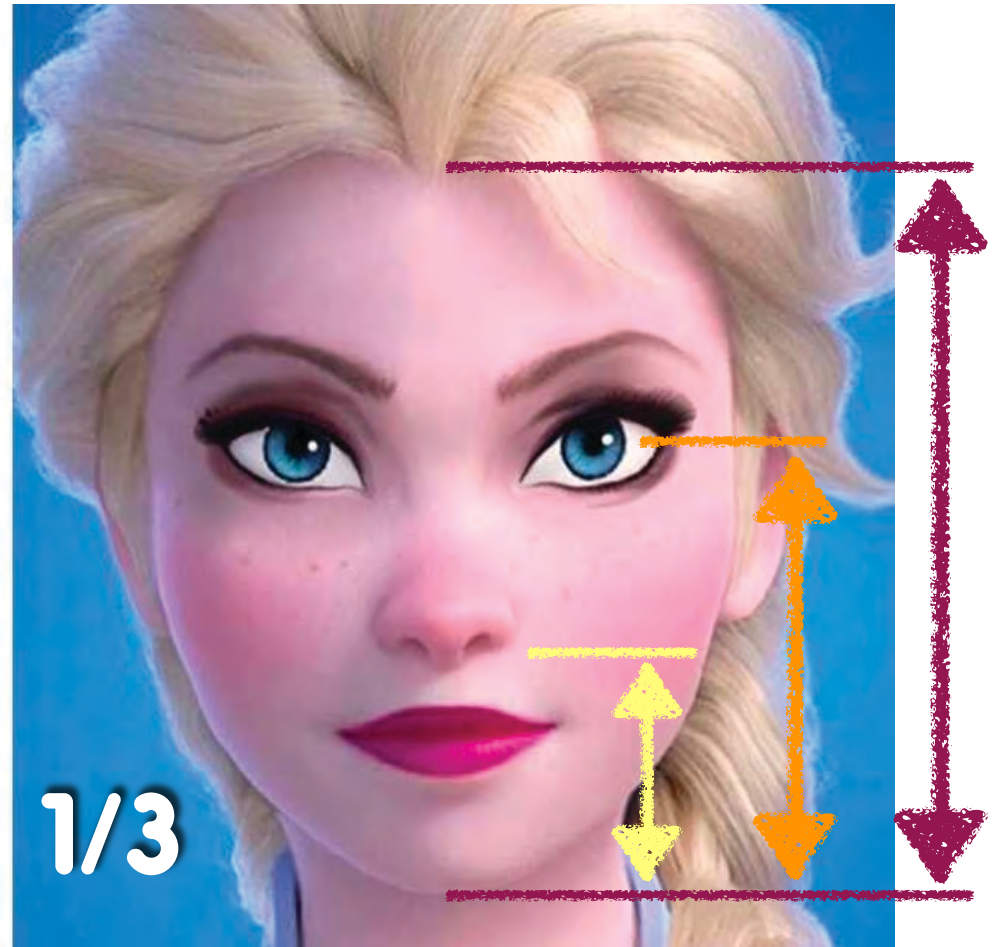
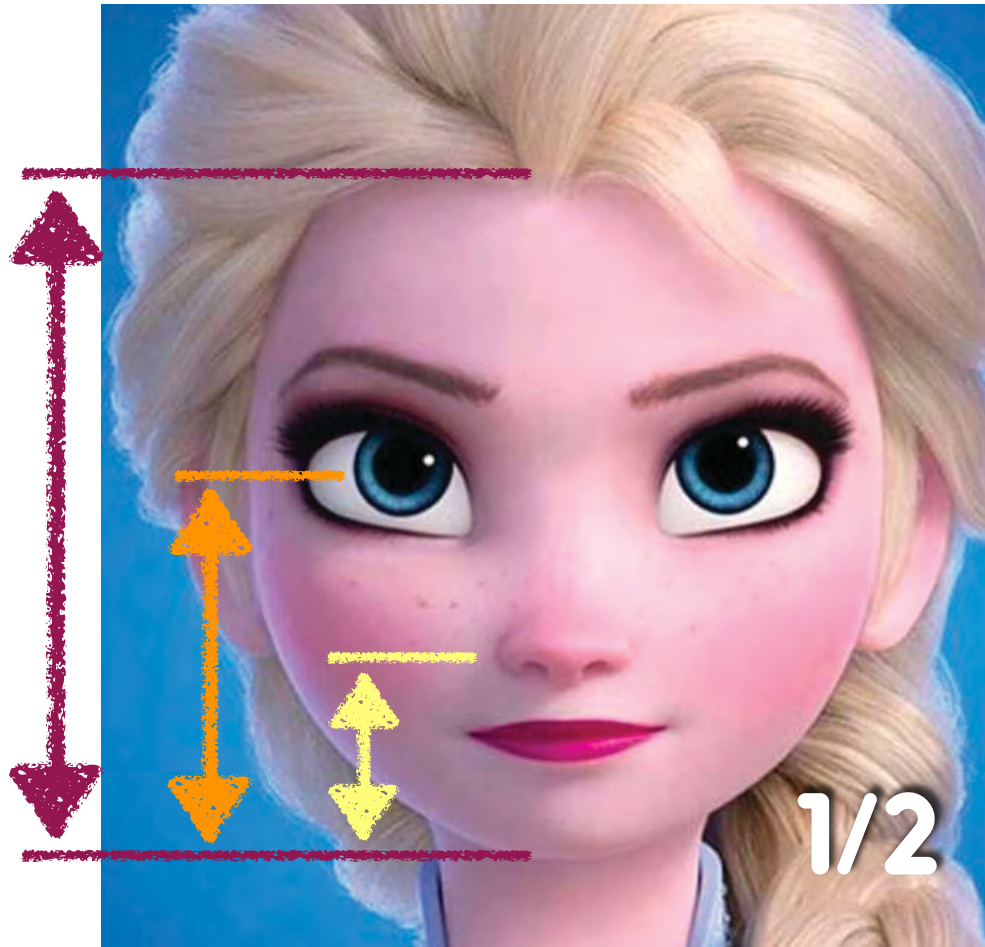


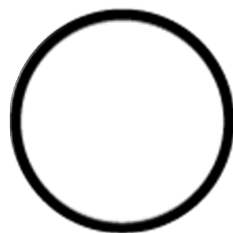
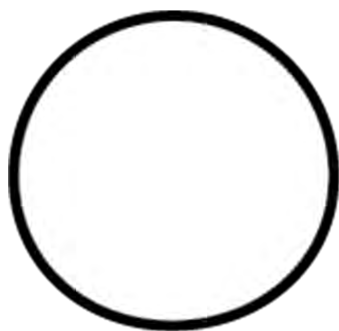
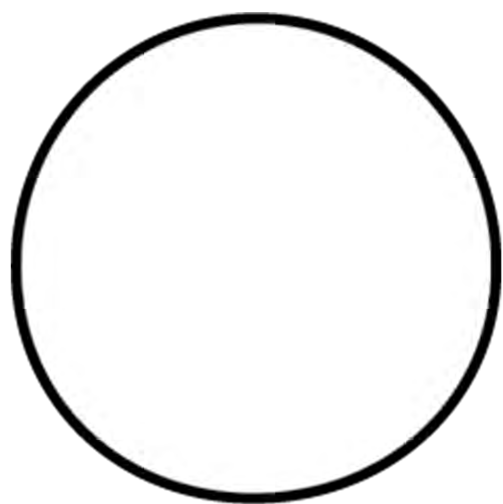


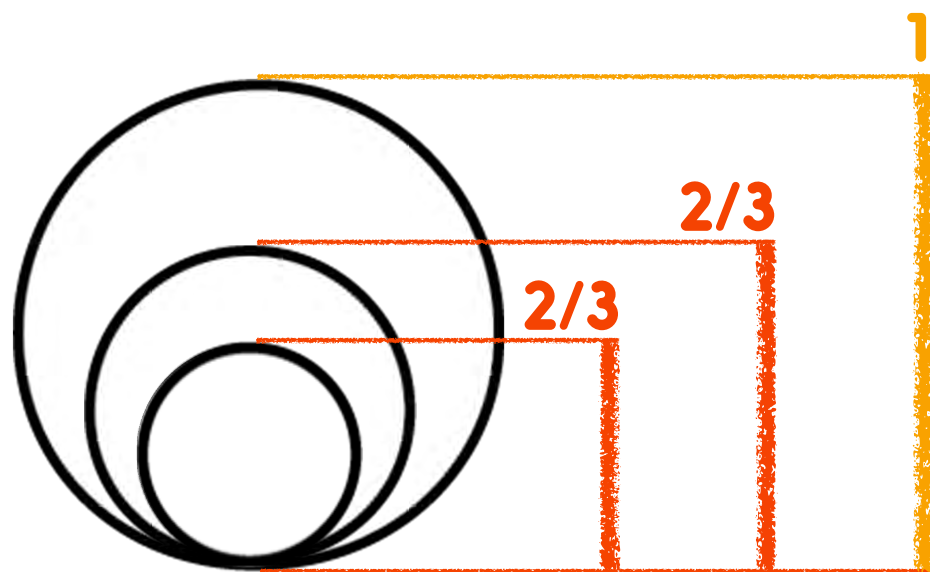
















product

not product









Steve Jobs, 1955-2011

work hard to get your thinking clean to
make it simple

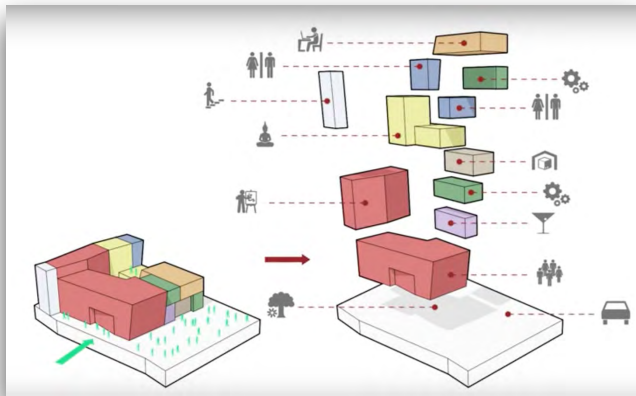


KIS'nS

Keep It Simple, not Stupid

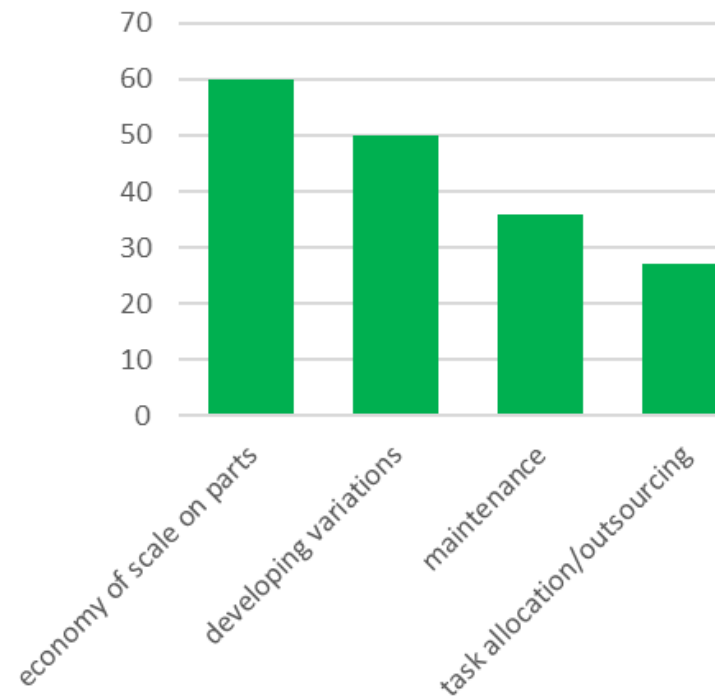
mini quiz

what are advantages and disadvantages of a modular product architecture?



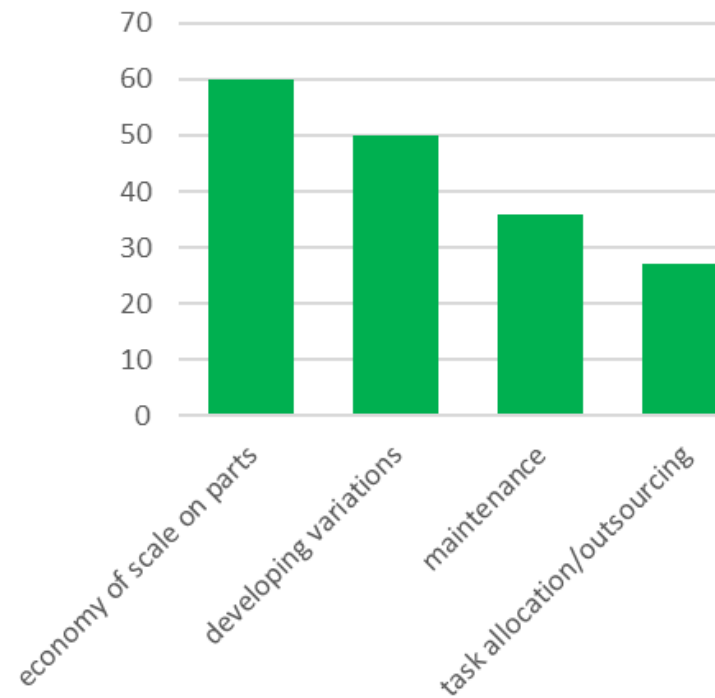
mini quiz

what are **advantages** and disadvantages of a modular product architecture?



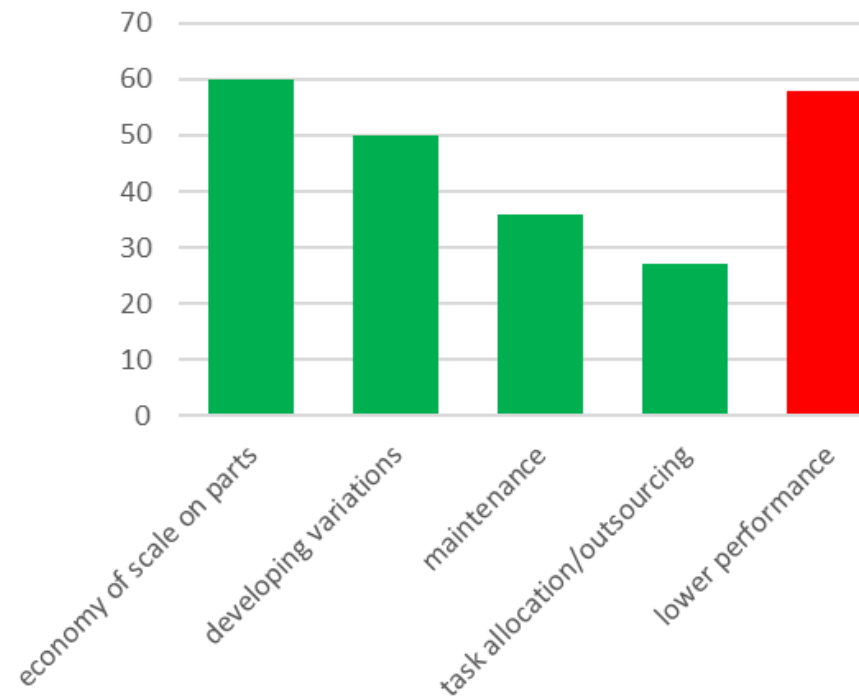
mini quiz

what are **advantages** and disadvantages of a modular product architecture?



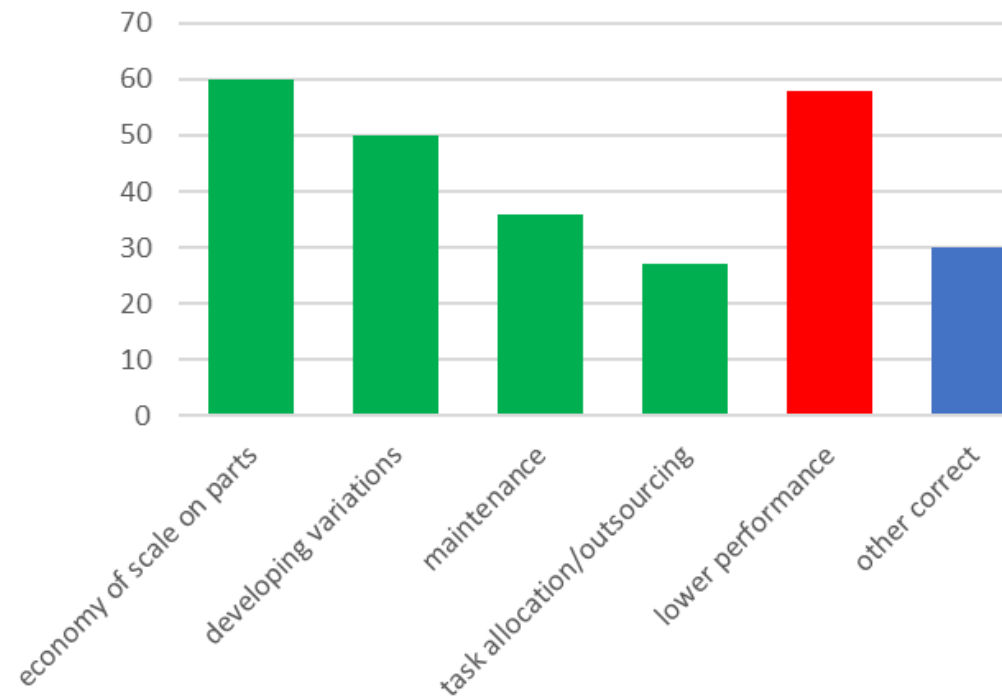
mini quiz

what are **advantages** and **disadvantages** of a modular product architecture?



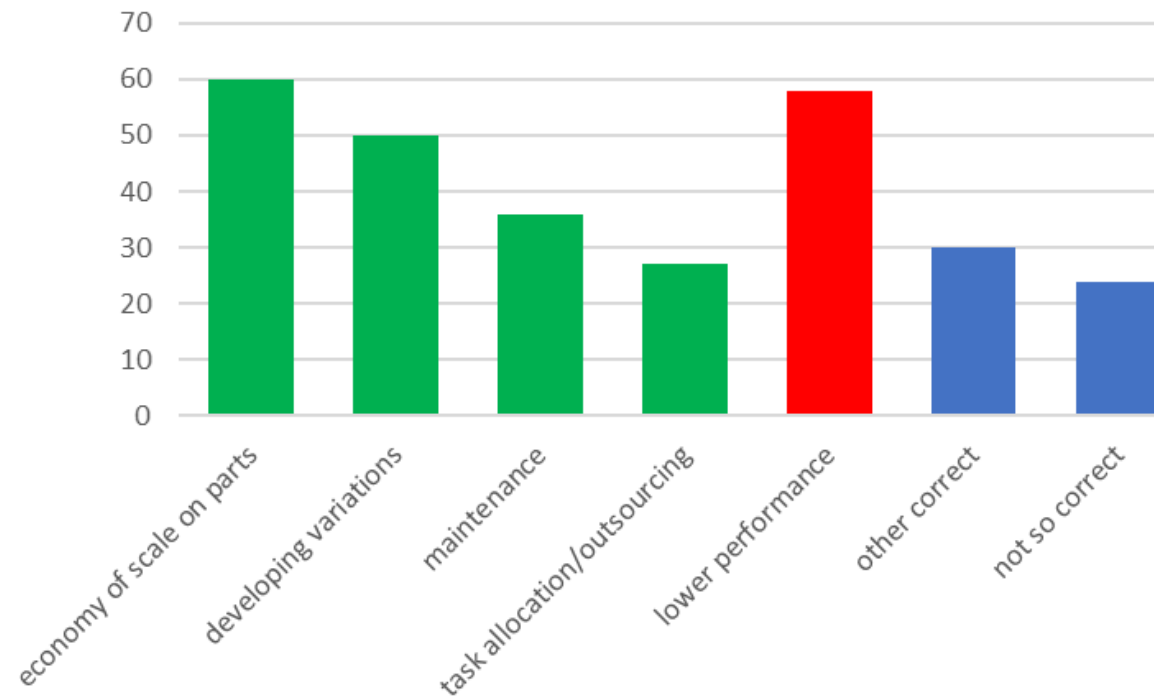
mini quiz

what are advantages and disadvantages of a modular product architecture?



mini quiz

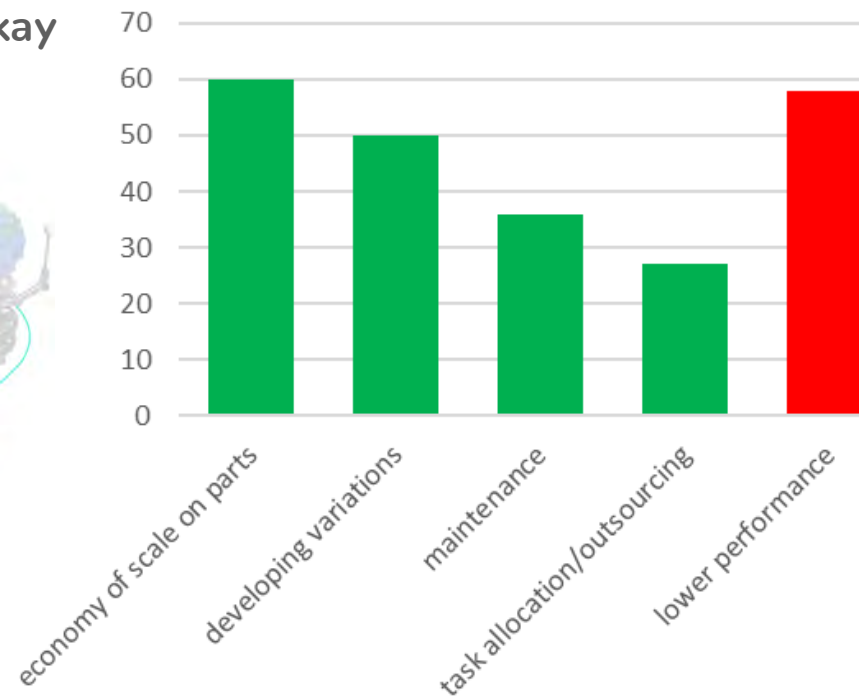
what are advantages and disadvantages of a modular product architecture?



mini quiz

what are advantages and disadvantages of a modular product architecture?

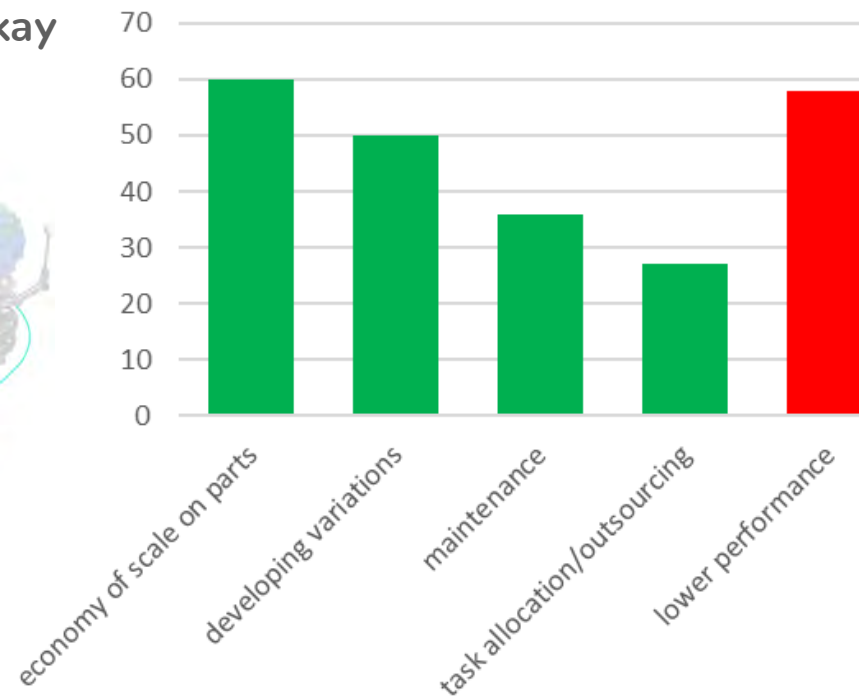
Cady Boronkay



mini quiz

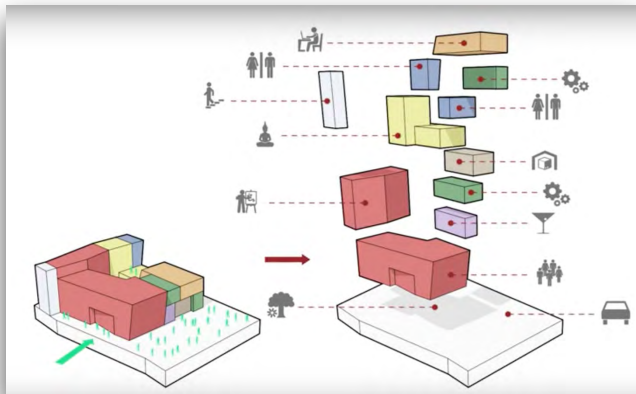
what are advantages and disadvantages of a modular product architecture?

Cady Boronkay

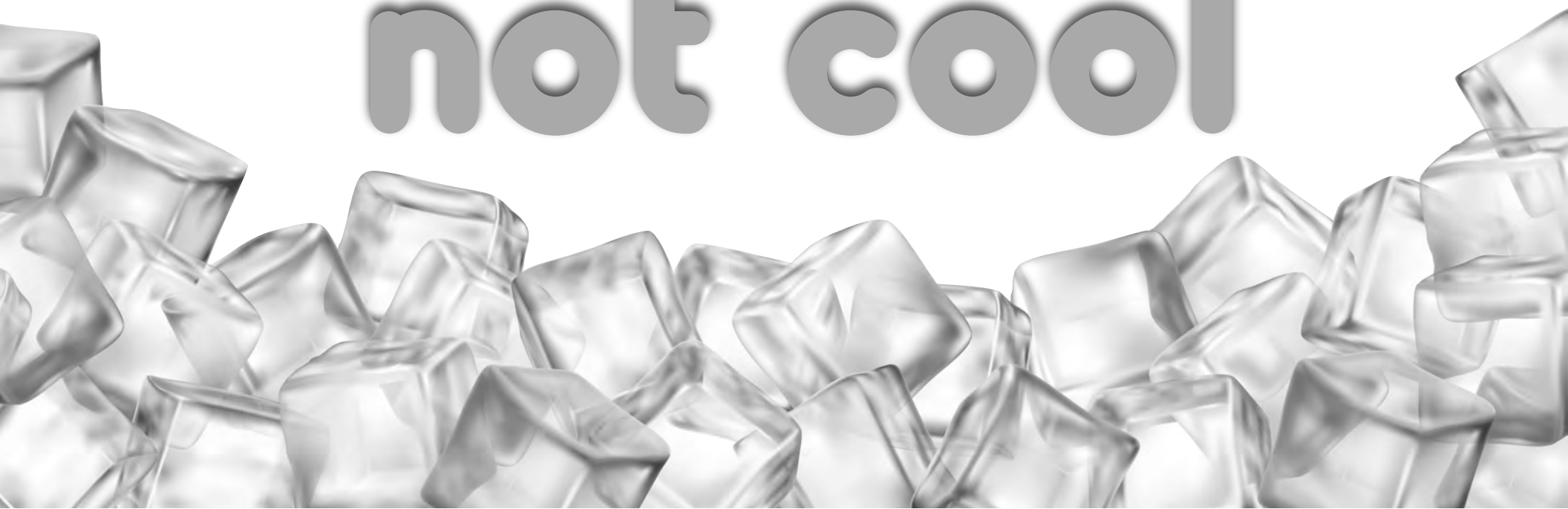


mini quiz

what are advantages and disadvantages of a modular product architecture?



not cool















form follows function

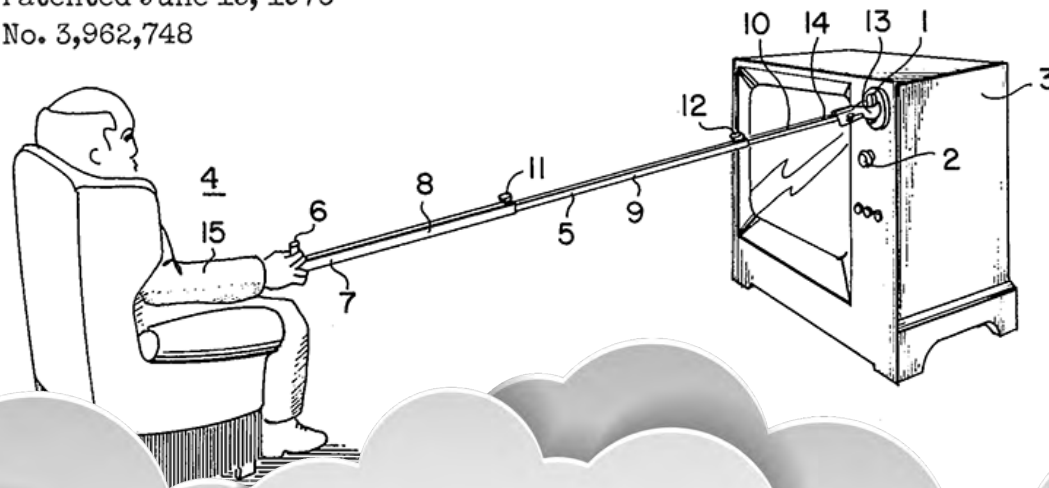


patent searching Wed at 7 PM in 14N-142

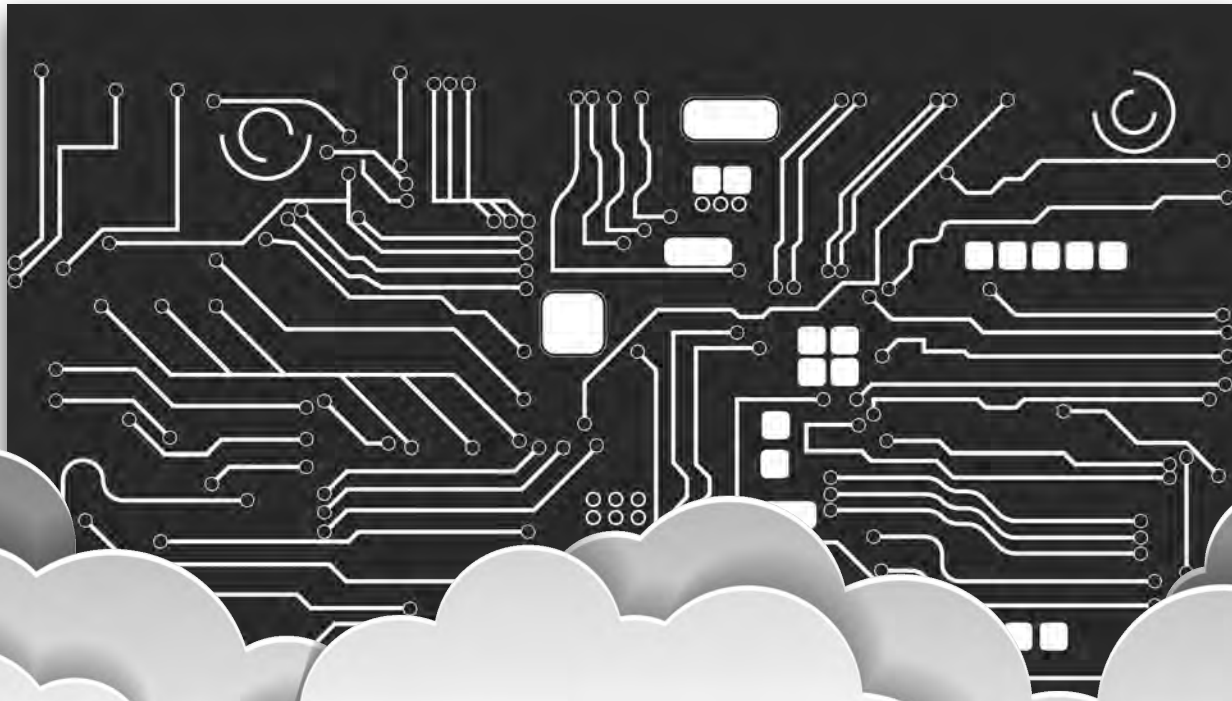
CHRIS T. MICHAELS TV CONTROL DEVICE

Patented June 15, 1976

No. 3,962,748



advanced electronics Thurs at 7 PM. 3-062



product costing

Fri at 4 PM. 3-333



team review please reflect in lab





form follows function has been misunderstood
form and function should be **one**

Frank Lloyd Wright
1867-1959