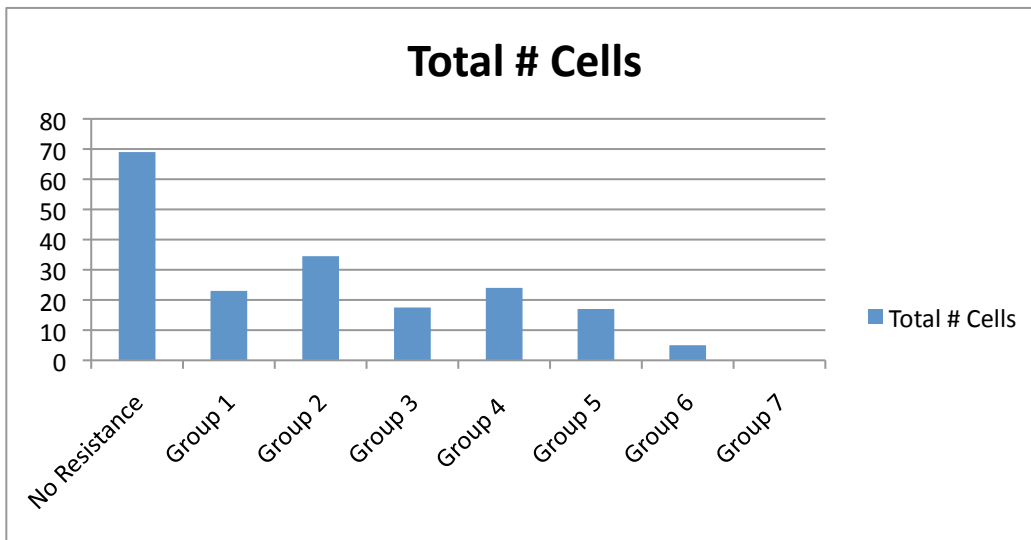
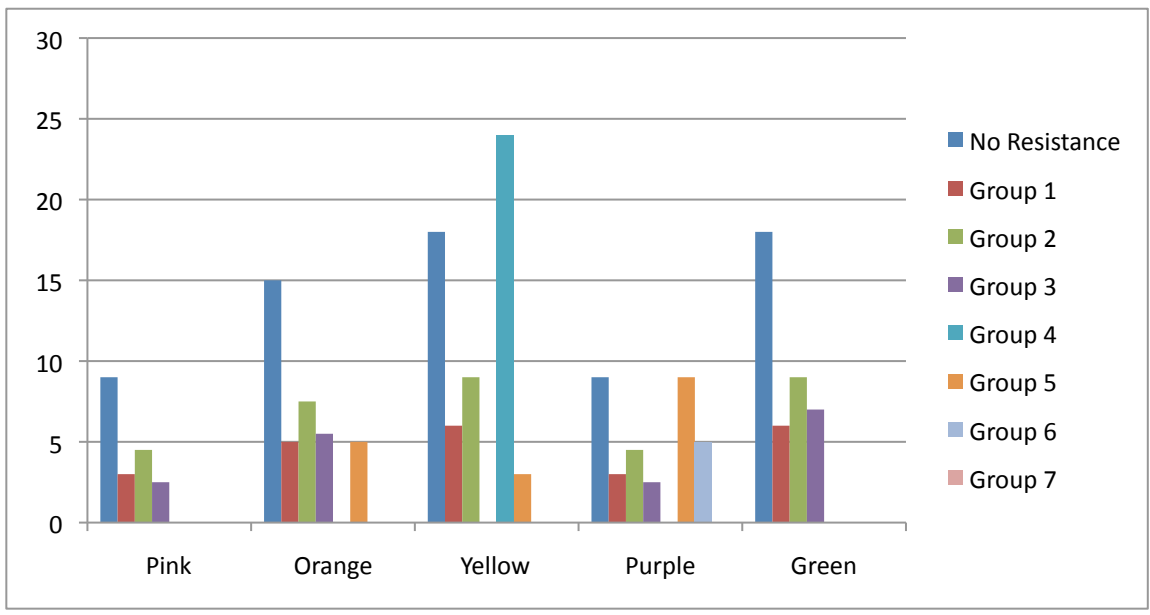
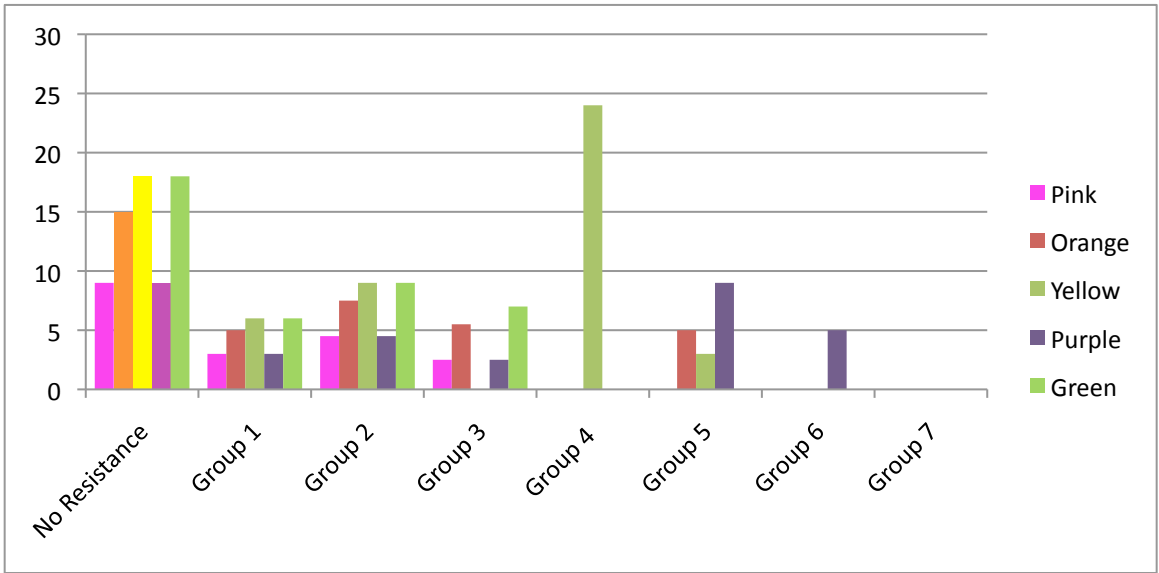
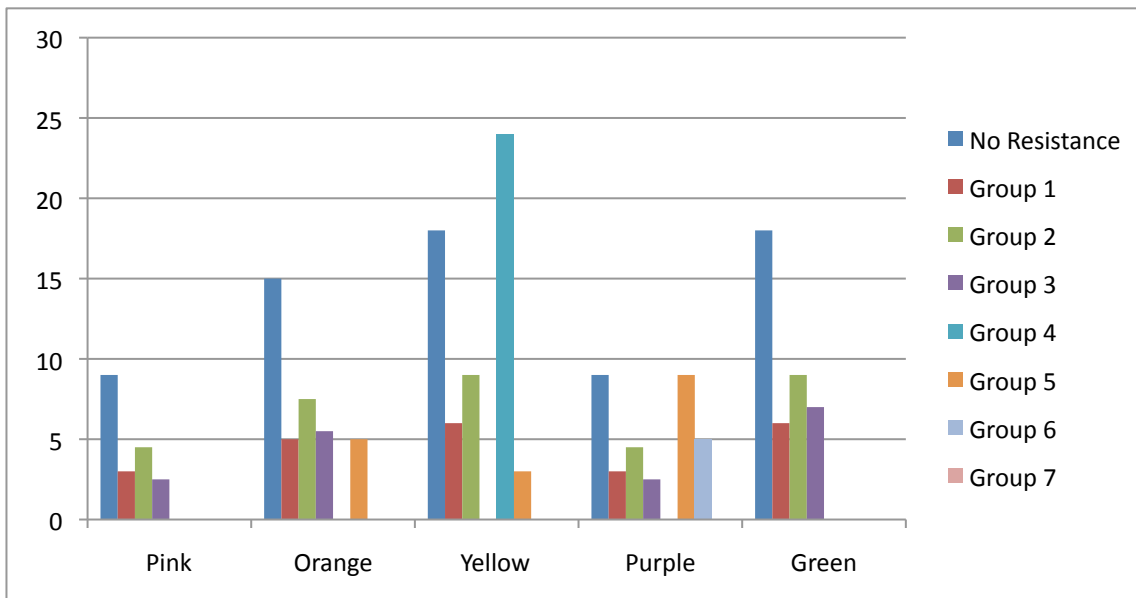
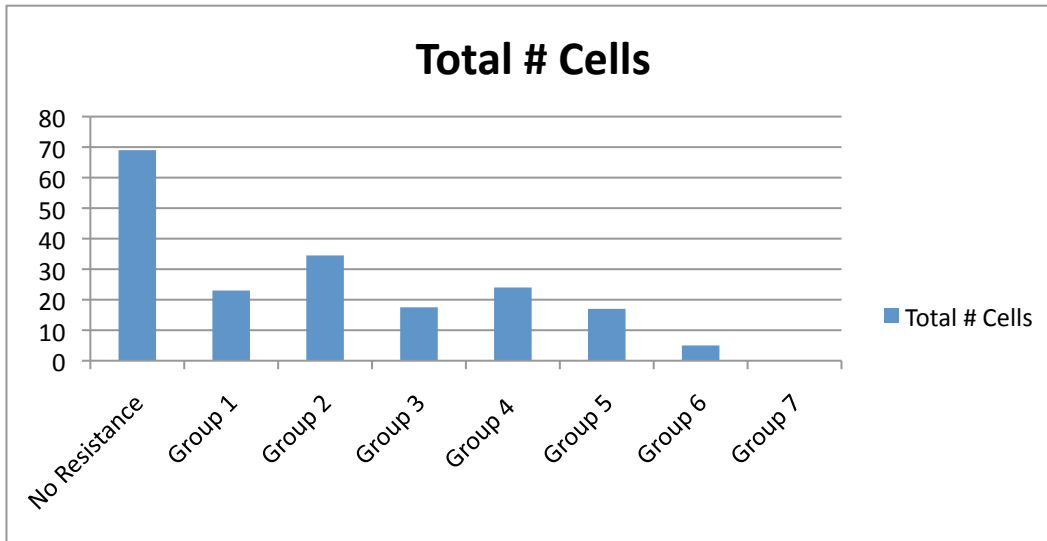
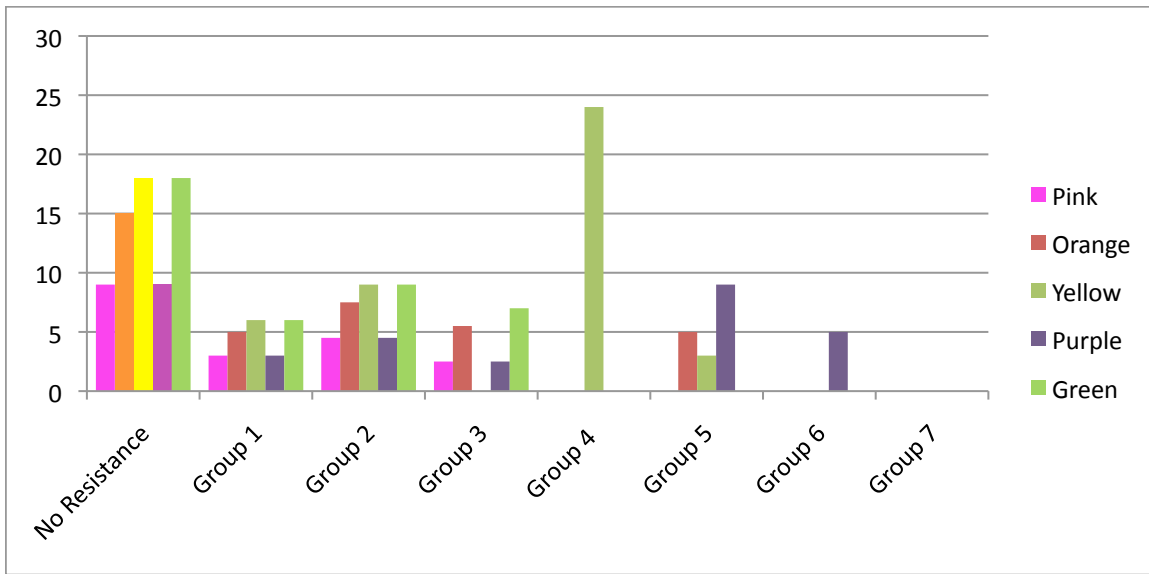


Group	No Resistance	Group 1	Group 2	Group 3	Group 4	Group 5	Group 6	Group 7
Pink	9	3	4.5	2.5				
Orange	15	5	7.5	5.5		5		
Yellow	18	6	9	0	24	3		
Purple	9	3	4.5	2.5		9	5	
Green	18	6	9	7				
<b>Total # Cells</b>	<b>69</b>	<b>23</b>	<b>34.5</b>	<b>17.5</b>	<b>24</b>	<b>17</b>	<b>5</b>	<b>0</b>



Group	No Resistar	Group 1	Group 2	Group 3	Group 4	Group 5	Group 6	Group 7
Pink	9	3	4.5	2.5	0	0	0	0
Orange	15	5	7.5	5.5	0	5	0	0
Yellow	18	6	9	0	24	3	0	0
Purple	9	3	4.5	2.5	0	9	5	0
Green	18	6	9	7	0	0	0	0
Total # Cells	69	23	34.5	17.5	24	17	5	0





- 1) The graphs should autofill when data is entered into the table on the sheet: Graph Total Number of Cells.
- 2) The Graphs Colors sheet has the data represented in two ways; on one graph, the groups are the X axis and the colors are the Y axis; the other has the axes flipped. The students should discuss which makes the information more easily understood to them. One of the graphs has the column colors coordinated to our bead colors - we know you may be using other colors but this is the sheet we're using at the Koch Institute

The Graphs Colors sheet is also locked and password protected in order to prevent accidental deletion of the references to the first pages' table. However, if for some reason you need to format this sheet, the password is resistance